



AC-1200UR

1200Mbps 802.11AC AP Router with USB

- 2.4G/5G Dual Band Concurrent
- 802.11 a/b/g/n and 802.11 ac
- 4X Gigabit LAN Port with 1 Gigabit WAN Port
- 3dBm Dual Band Detachable Antenna
- Up to Max. 23dBm Output Power (Limited to 20dBm in EU)
- Support Wireless Access Control and Bandwidth Control
- Concurrent Users up to 64
- Each Radio Can Operate Independently
- USB 2.0 for NAS or Printer Server

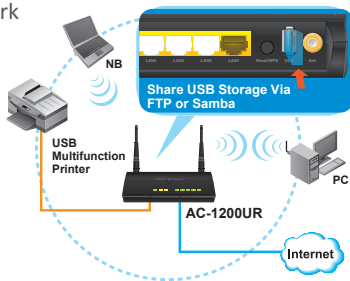


AirLive
Central Wireless



Multi-Function USB Port

AC-1200UR builds in an USB 2.0 Port. The USB port can connect the USB storage to become the FTP server. The FTP server can be accessed in the local network or via Internet. The USB port also can turn the USB printer into network printer. By installation the AirLive USB controller center in your PC, the printer or USB drive can be shared via wireless or wired network.



Concurrent Dual Band Access Points with All Gigabit LAN Port

This router can support wireless devices operating in 2.4GHz and 5GHz wireless networks simultaneously. In addition, all of the LANs ports support gigabit. Acting as a bridge among the wired Ethernet and the 2.4GHz 802.11b/g/n and the 5GHz 802.11a/n/ac wireless LANs, this router can let all your wireless devices access both the wired and the wireless network nodes.



Variety Operation Mode

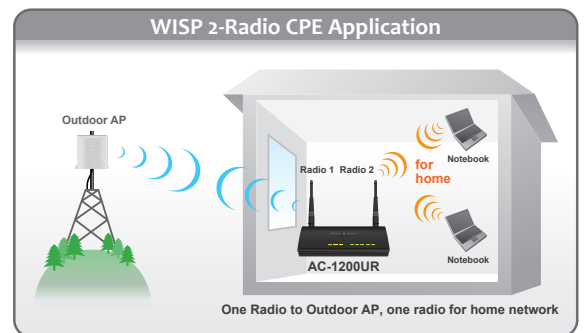
The AC-1200UR is much more than a normal dual band concurrent router. Each radio is capable to operate independently, this combines to variety different operation modes. The router also provides quick setting page for 5 common use operation modes. User can also change mode for each radio manually.

Mode	Radio1 5G	Radio2 2.4G	Applications
Dual Band Router	AP Router	AP Router	Dual Home Networks: 5GHz for Games/AV and 2.4GHz for PC, Mobile
Dual AP Mode	Access Point	Access Point	Dual Band Hotspots
WISP + AP	Client Mode	AP Router	Sharing WISP 5GHz Broadband Wirelessly
WDS + AP	WDS Mode	Access Point	WDS Wireless Repeater
Client + AP	Client Mode	Access Point	Universal Repeater



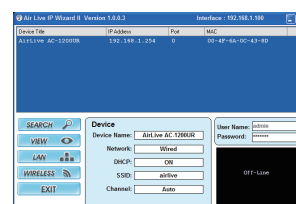
WISP + AP Application

With two separate radios, AC-1200UR is most ideal for WISP application. The 5GHz radio can be used for connection with WISP outdoor AP, and the 2.4 GHz radio is used for indoor WiFi network for home and office. Therefore, WISP no longer has to install 2 separate units to provide wireless access in subscriber's home.



IP Wizard and AirLive Central Wireless Management

The AC-1200UR work with AirLive IP finder utility and Management Software AirLive Central Wireless. Therefore, you can discover AC-1200UR, change SSID and upgrade firmware without visiting the device's Web UI. You can also do the patch setting such as upgrade the firmware for multiple AC-1200UR together.



Chipset <ul style="list-style-type: none"> • MEDIATEK MT7620A (CPU) + MT7530W (Switch) • 8MB Flash • 64MB RAM 	<ul style="list-style-type: none"> • Port Forwarding • Virtual Server • UPNP • ALG Setting • Access Control • URL Blocking • DoS • FTP • DMZ
LAN Port <ul style="list-style-type: none"> • 4 x 10/100/1000Mbps LAN • 1 x 10/100/1000Mbps WAN 	
USB <ul style="list-style-type: none"> • USB 2.0 ,Support Storage & FTP file or printer sharing function 	Management Feature <ul style="list-style-type: none"> • AirLive Central Wireless • IP Wizard • Web Management • AirLive USB Controller center
Antenna <ul style="list-style-type: none"> • 2 X 2.4G/5G dual Band R-SMA Antenna 	
Frequency Range <ul style="list-style-type: none"> • 2.4G : 2.4000~2.4835GHz (Industrial Scientific Medical Band) • 5G : 5180 ~5240GHz for ETSI, FCC 	Output Power (EIRP) <ul style="list-style-type: none"> • ETSI: <ul style="list-style-type: none"> 2.4GHz : 18 ± 1.5dBm 5GHz : 19 ± 1dBm • FCC: <ul style="list-style-type: none"> 2.4GHz : 20 ± 1.5dBm 5GHz : 20 ± 1.5dBm
Data Rate <ul style="list-style-type: none"> • 11n (40MHz): MCS0-7, up to 300Mbps • 11n (20MHz): MCS0-7, up to 144Mbps • 11g: 6, 9, 12, 24, 36, 48,54Mbps • 11b: 1, 2, 5.5, 11Mbps • 11ac(80Mhz): MSC0-9 , up to 866Mbps 	
Wireless Security <ul style="list-style-type: none"> • WEP • WPA-PSK • WPA2-PSK • WPA-Radius • 802.1x 	Receive Sensitivity <ul style="list-style-type: none"> • 2.4GHz: <ul style="list-style-type: none"> 11b(11M): -76±2dBm 11g(54M): -65±2dBm 11n(20MHz, MCS7):-64±2dBm 11n(40MHz, MCS7):-61±2dBm • 5GHz: <ul style="list-style-type: none"> 11a(54M): -65±2dBm 11n(20MHz, MCS7):-64±2dBm 11n(40MHz, MCS7):-61±2dBm
Software <ul style="list-style-type: none"> • Web Base Management • Setup Wizard • AC1200UR USB Control Center • WAN : Static IP, Dynamic IP, PPPoE, PPTP, L2TP, • Cloned MAC Address • Disable SSID • Wireless SiteSurvey • Tx Output Power Adjustment, WMM • Wireless Mode : AP Router, AP, Client, WDS (each radio can work independently) • Restore to Default • Configuration Backup and Restore • Firmware upgradeable via Web Management • QoS • NTP • Remote Management • DDNS • IP Filtering 	
	Temperature <ul style="list-style-type: none"> • Operating: 0~40°C • Storage: -20~60°C
	Humidity <ul style="list-style-type: none"> • Operating: 10~90% (Non-Condensing) • Storage: Max.95% (Non-Condensing)
	Certification <ul style="list-style-type: none"> • CE,FCC
	Dimension <ul style="list-style-type: none"> • 30(H) x 157(W) x 127(D) mm
	Product Weight <ul style="list-style-type: none"> • 305 (g)

Ordering Information:

AirLive AC-1200UR 1200Mbps 802.11AC AP Router with USB