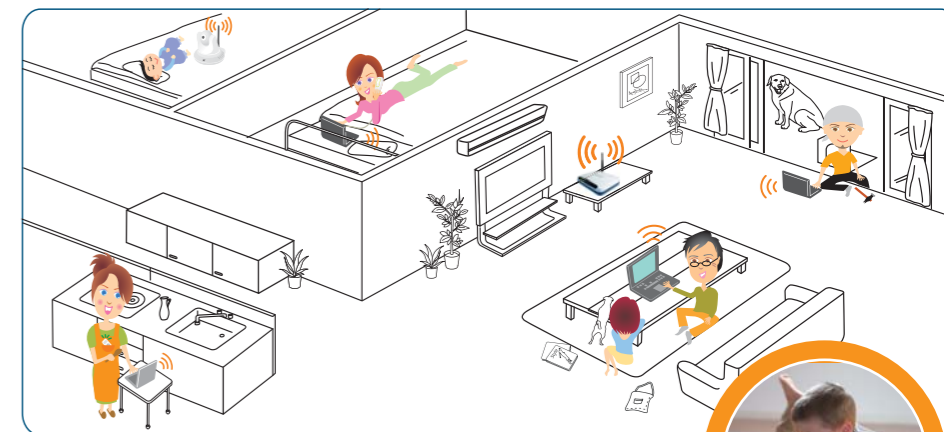


Wireless+
ADSL2+ Wireless ADSL2+ Router

TW263R4 (Infinity)



TW263R4 (Infinity)



Specifications

The ADSL2+ wireless Router combines 802.11b/g Wireless Access Point, ADSL2+ modem, router, four-port switch, it offers quick access to the wired and wireless network. The device supports downstream rate up to 12/24 Mbps with capability of ADSL2/ADSL2+, and upstream rate up to 1Mbps.

ADSL COMPLIANCE

- Full-rate ANSI T1.413 Issue 2
- ITU G.992.1 (G.dmt) Annex A or B
- Splitterless ITU G.992.2 (G.lite) specification
- ITU G.994.1 (G.hs)
- ITU G.992.3 (G.dmt.bis / ADSL2)
- ITU G.992.5 (ADSL2plus)
- Supports splitterless ADSL implementation
- Supports Dying Gasp

ATM SUBSYSTEM

- PPP over ATM (RFC 2364)
- Bridged IP over ATM (RFC 1483)
- PPP over Ethernet (RFC 2516)
- Multiprotocol Encapsulation over AAL5 (RFC 2684)
- Supports up to 8 Virtual Channel Connections (VCCs)

- Supports UBR, CBR, and VBR service classes
- ATM Forum UNI 3.1/4.0 PVC
- Support OAM F4/F5 look-back, AIS and RDI OAM cells

FEATURES

- IP Alias
- User Datagram Protocol (UDP)
- Transmission Control Protocol (TCP)
- Internet Control Message Protocol (ICMP)
- Internet Group Management Protocol (IGMP)
- PPP over PAP (RFC1334)
- PPP over CHAP (RFC1994)
- MIB II support (RFC1213)
- Transparent bridging as specified in IEEE 802.1D
- NAT (Network Address Translation)
- Dynamic Host Configuration Protocol (DHCP)
- Dynamic DNS support
- Routing Information Protocol (RIP) v1 and v2

MANAGEMENT

- TFTP client and server
- DHCP client and server
- FTP server and client
- Universal Plug and Play (UPnP) support
- Web-based Graphical User Interface (GUI) enabling end-user device configuration via HTTP

- Update of boot image or configuration data via TFTP/ FTP
- Syslog
- Built-in Diagnostic Tools
- SNMP MIB support

WIRELESS 802.11b/g

- Compliant 802.11g and 802.11b
- 2.4 GHz – 2.48GHz frequency range
- Supports 64/128 bits WEP and WPA
- 54 Mbps wireless operation rate
- Supports Quality of Service (QoS) – 802.11e

ETHERNET INTERFACE

- IEEE 802.3
- 10/100 Mbps
- Ethernet interface supporting up to 64 LAN hosts

