

- Built-in Ethernet and USB to connect to your computers
- Built-in ADSL2/2+ Modem with Firewall protection
- Easy setup wizard for step-by-step installation
- Works with all major ISP's supporting ADSL2/2+



DESIGNED FOR  
**ADSL**  
ADSL2/2+

## FEATURES

- ADSL2: up to 12Mbps down<sup>2</sup>
- ADSL2+: up to 24Mbps down<sup>2</sup>
- Plug & Play USB / Fast Ethernet Connectivity
- ZIP-B / Half-Bridge Mode
- Secure NAT/DHCP Functions
- Telstra Approved
- Supports all major ISP'S
- 3 Years Warranty

## DESCRIPTION

The DSL-502T ADSL2/2+ Modem Router is a versatile, high-speed router for home and the small office. With integrated ADSL2/2+ supporting up to 24Mbps download speed, firewall protection, this modem router provides all the functions that a home or small office needs to establish a secure and high-speed link to the outside world.

## KEY BENEFITS

### SHARE YOUR INTERNET CONNECTION

The DSL-502T provides DHCP server for a group of home or small office users to simultaneously access the Internet. It provides an Ethernet port that can be connected to a single computer or an Ethernet switch for a group of users, plus a USB port that can connect to a USB interface of a computer.

### FIREWALL PROTECTION

The DSL-502T provides firewall security using Stateful Packet Inspection (SPI) and hacker attack logging for Denial of Service (DoS) attack protection. SPI inspects the contents of all incoming packet headers before deciding what packets are allowed to pass through. Access control is provided with packet filtering based on port and source/destination MAC/IP addresses. With Virtual Server Mapping, the router can be set to allow separate FTP, Web, and multiple games to share the same Internet-visible IP address while still protecting your servers and workstations from hackers. VPN pass-through is provided to let mobile users access files and mail from offices to work at home without having to use complex VPN client software.

The DSL-502T provides NAT protection for your office and home users from Internet intruders and hacker attacks. It blocks and re-directs certain ports to limit the services that outside users can access your network.

A DMZ setting can be applied to a single client IP address (such as a Web server) behind the router to fully expose it to the Internet and ensure complete Internet application compatibility even if the specific port is not known. This allows you to set up web sites and e-commerce business from your office while maintaining protection for the rest of your office LAN.

**BROADBAND**

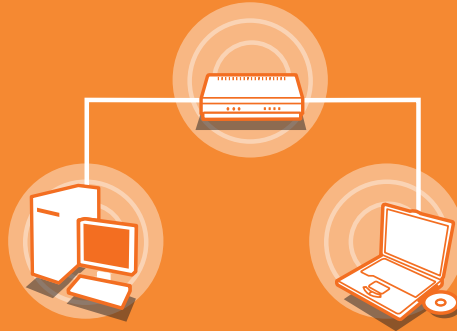
## WHAT IT DOES

This DSL-502T connects to the Internet using an integrated high-speed ADSL2/2+ interface. Connecting to this modem router via an Ethernet port or USB port on your computer at home or in the office will allow you to share the high-speed Internet connection. The modem router provides firewall protection for secure on-line games, voice communication and downloading of photos, files, music and video over the Internet.

## GET A HIGH-SPEED INTERNET CONNECTION

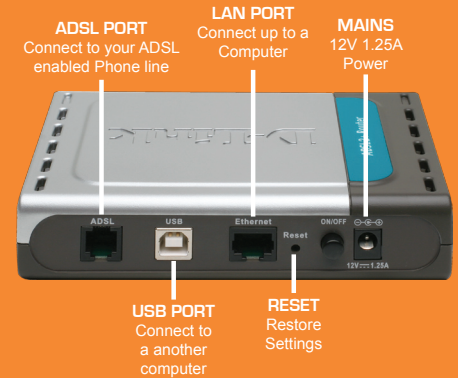
The DSL-502T features the latest ADSL2/2+ standards, providing speeds of up to 24Mbps downstream and 1Mbps upstream (ADSL2+), or 12Mbps downstream and 1Mbps upstream (ADSL2). This router auto-senses the connection type and auto negotiates the best modulation scheme, using the G.hs (handshake) protocol.

## SET UP A NETWORK AND CONNECT TO THE INTERNET



Desktops can connect via Fast Ethernet LAN port or USB port

Connect the ethernet or USB cable and follow the CD to connect to the Internet



## TECHNICAL SPECIFICATIONS

### HARDWARE

#### INTERFACES

- + 1 RJ-11 ADSL port
- + 1 RJ-45 10/100BASE-TX Fast Ethernet port with auto MDI/MDIX
- + 1 USB 1.1 port
- + Factory reset button

#### ADSL

##### STANDARDS

- + ADSL standards: Multi-mode, ANSI T1.413 Issue 2, ITU G.992.1 (G.dmt) Annex A, ITU G.992.2 (G.lite) Annex A, ITU G.994.1 (G.hs)
- + ADSL2 standards: ITU G.992.3 (G.dmt.bis) Annex A/L/M, ITU G.992.4 (G.lite.bis) Annex A
- + ADSL2+ standards: ITU G.992.5 Annex A/L/M

#### DATA RATES

- + G.dmt: 8Mbps downstream, 832Kbps upstream
- + G.lite: 1.5Mbps downstream, 512Kbps upstream
- + ADSL2: 12Mbps downstream, 1Mbps upstream
- + ADSL2+: 24Mbps downstream, 1Mbps upstream

#### ATM & PPP PROTOCOLS

- + ATM Adaptation Layer Type 5 (AAL5)
- + Bridged or routed Ethernet encapsulation
- + VC and LLC based multiplexing
- + PPP over Ethernet (PPPoE)
- + PPP over ATM (RFC 2364)
- + Classical IP over ATM (RFC 1577)
- + OAM F4/F5

### ROUTER

#### NETWORK PROTOCOLS AND FEATURES

- + NAT, Static Routing, RIP v.1, v.2
- + Universal Plug and Play (UPnP) Compliant
- + Dynamic Domain Name System (DDNS)
- + Virtual Server & DMZ
- + SNTP, DNS relay and IGMP proxy

#### FIREWALL/ACCESS SECURITY

- + Built-in NAT firewall
- + Stateful Packet Inspection (SPI)
- + DoS attacks prevention (IP Spoofing, Land Attack, Smurf Attack, Ping of Death, TCP SYN flooding)
- + Packet filtering based on port, source IP address, destination IP address, MAC address (ICMP/TCP/UDP)

#### VIRTUAL PRIVATE NETWORK (VPN)

- + PPTP/IPSec pass-through

### CONFIGURATION/MANAGEMENT

- + D-Link Click and Connect Setup Wizard
- + Quick Installation Wizard
- + Web-based GUI for remote/local management
- + Firmware upgrade, configuration data upload/download via Web-based GUI
- + Telnet server for remote/local management
- + Syslog monitoring
- + SNMP v.1, v.2c support with built-in MIB-II (RFC 1213)
- + DHCP server/client/relay

### SECURITY/BANDWIDTH MANAGEMENT

- + IGMP Snooping with 32 Multicast groups
- + PVC/VLAN port mapping (4 VLANs)
- + Bandwidth management based-on IP protocol, port number, MAC address

### PHYSICAL AND ENVIRONMENTAL

#### POWER INPUT

12VAC 1.25A external power adapter (with dying gasp)

#### DIMENSIONS

142 x 117 x 31 mm

#### WEIGHT

202.1 grams

#### OPERATING TEMPERATURE

0° to 40°C

#### STORAGE TEMPERATURE

-20° to 70°C

#### OPERATING HUMIDITY

5% to 95% non-condensing

#### EMISSION (EMC/EMI)

- + FCC Part 15 Class B
- + CE (EN55022/EN55024/EN300 328/EN301 489)

#### SAFETY

- + CSA
- + LVD

### WARRANTY

- + 3-Year Limited Warranty available only in Australia and New Zealand

<sup>1</sup> Computer must adhere to Microsoft's recommended System Requirements. The software included with this product is not Mac-compatible.

<sup>2</sup> This unit complies with ADSL standards worldwide. It supports a basic downstream rate of 8Mbps with ADSL and is capable of up to 12/24Mbps with ADSL2/2+ with an upstream of 1Mbps. ADSL speeds may vary depending on the individual contract with an Internet Service Provider and the distance of the unit from the ISP's DSLAM.

Product specifications, size and shape are subject to change without notice, and actual product appearance may differ from that depicted on the packaging.

Prices and specifications subject to change without notice. D-Link is a registered trademark of D-Link Corporation/D-Link System, Inc. All other trademarks are the property of their respective manufacturers. ©Copyright 2008. All rights reserved.

\* Terms and conditions apply. Please check the D-Link website for details.



ACN 052 202 838  
2576

Release 03 (Sep. 2008)

**AUSTRALIA:**

1300 766 868 - <http://www.dlink.com.au/tech>

**NEW ZEALAND:**

0800 900 900 - <http://www.dlink.co.nz/tech>

# BROADBAND