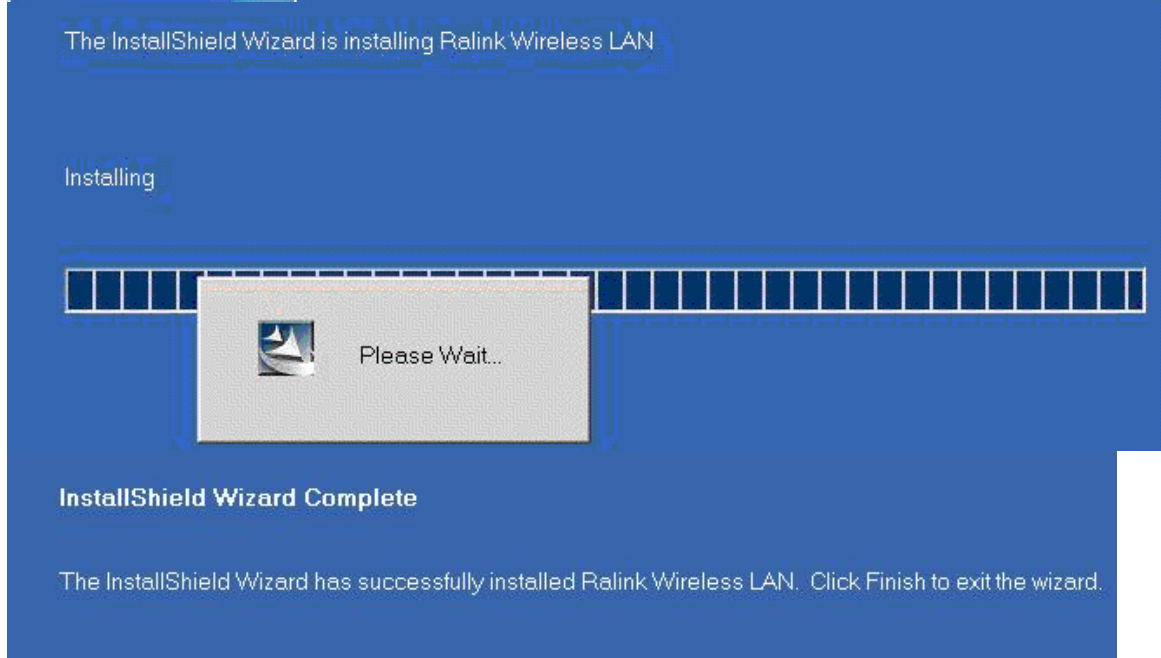
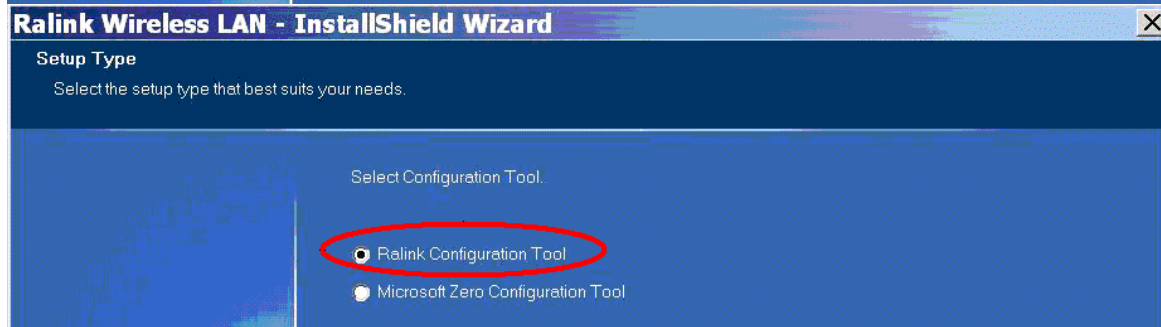
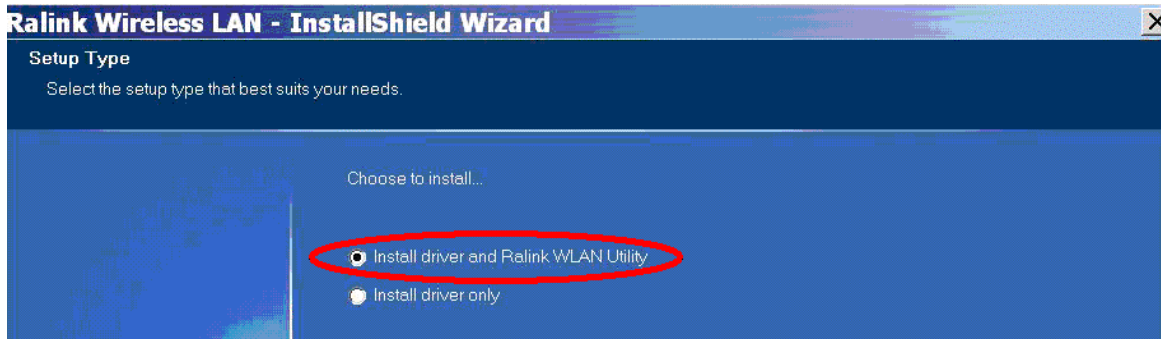


802.11b/g/n USB dongle
AWUN3121 / ARGtek
Quick User Manual Guide

Step 1: RaUI (Ralink Utility) Installation



You can double click a small Ralink icon appears in the notifications area of the

802.11b/g/n USB dongle
AWUN3121 / ARGtek

taskbar to maximize the dialog box or you may also click the mouse's right button to close RaUI.

Step 2: Start RaUI (Ralink Utility)

When starting RaUI, the system will connect to the AP with best signal strength without setting a profile or matching a profile setting. The AP list includes most used fields, such as SSID, network type, channel used, wireless mode, security status and the signal percentage.

The screenshot displays the RaUI interface with the following components:

- Navigation Bar:** Network, Advanced, Statistics, WMM, WPS, Radio on/off, About, Help.
- AP List Table:**

SSID	Channel	Signal	AP List	Signal %
corega-ryan	1	b g n	15%	15%
dlink	6	b g n	15%	15%
Emallfly_02	11	b g n	34%	34%
hong	6	b g n	24%	24%
ken_chen	1	b g n	15%	15%
SMC	6	b g n	44%	44%

Connection Statistics:

- Status >> SMC <-> 00-13-F7-8E-63-93
- Extra Info >> Link is Up [TxPower:100%]
- Channel >> 6 <-> 2437 MHz; central channel : 6
- Authentication >> Open
- Encryption >> NONE
- Network Type >> Infrastructure
- IP Address >> 192.168.2.102
- Sub Mask >> 255.255.255.0
- Default Gateway >> 192.168.2.1

Performance Metrics:

- Link Quality >> 88%
- Signal Strength 1 >> 54%
- Signal Strength 2 >> 10%
- Noise Strength >> 26%

Transmit:

- Link Speed >> 26.0 Mbps
- Throughput >> 0.000 Kbps

Receive:

- Link Speed >> 39.0 Mbps
- Throughput >> 46.084 Kbps

1. Functional Section:

Profile page: The list keeps a record of your favorite wireless settings or others hotspots. You can activate either one on the preference list for quick connection.

802.11b/g/n USB dongle AWUN3121 / ARGtek

The screenshot displays the configuration interface for the 802.11b/g/n USB dongle (AWUN3121 / ARGtek). The interface is divided into several sections:

- Top Menu:** Includes Profile (circled in red), Network, Advanced, Statistics, WMM, WPS, Radio on/off, and About.
- Profile List:** Shows a list of profiles. The first profile is 'PROF1' with SSID 'SMC'. Below the list are buttons for Add, Edit, Delete, and Activate (circled in red).
- System Config:** A window for configuring the selected profile. It includes:
 - Profile Name >>** PROF1
 - SSID >>** SMC
 - Network Type >>** Infrastructure (dropdown menu is open, showing Ad hoc and Infrastructure options)
 - Tx Power >>** Auto
 - Preamble >>** (empty)
 - Power Save Mode >>** CAM and PSM (both radio buttons are circled in red)
 - RTS Threshold:** 0 (slider) to 2347 (input field)
 - Fragment Threshold:** 256 (slider) to 2346 (input field)
 - Buttons:** OK and Cancel

802.11b/g/n USB dongle AWUN3121 / ARGtek

Advanced page:

Network **Advanced** Statistics WMM WPS Radio on/off About Help

Wireless mode >> 2.4G

Enable CCX (Cisco Compatible eXtensions)

Turn on CCKM

Enable Radio Measurements

Non-Serving Channel Measurements limit

250 ms(0-2000)

Enable TX Burst

Enable TCP Window Size

Fast Roaming at -70 dBm

Show Authentication Status Dialog

Select Your Country Region Code

11B/G >> **5: CH1-14**

Apply

0: CH1-11

1: CH1-13

2: CH10-11

3: CH10-13

4: CH14

Status >> 5: CH1-14

Extra Info >> 6: CH3-9

Channel >> 7: CH5-13

Authentication >> Open

Link Quality >> 90%

Signal Strength 1 >> 55%

Signal Strength 2 >> 5%

Noise Strength >> 26%

Statistics page:

Network Advanced **Statistics** WMM WPS Radio on/off About Help

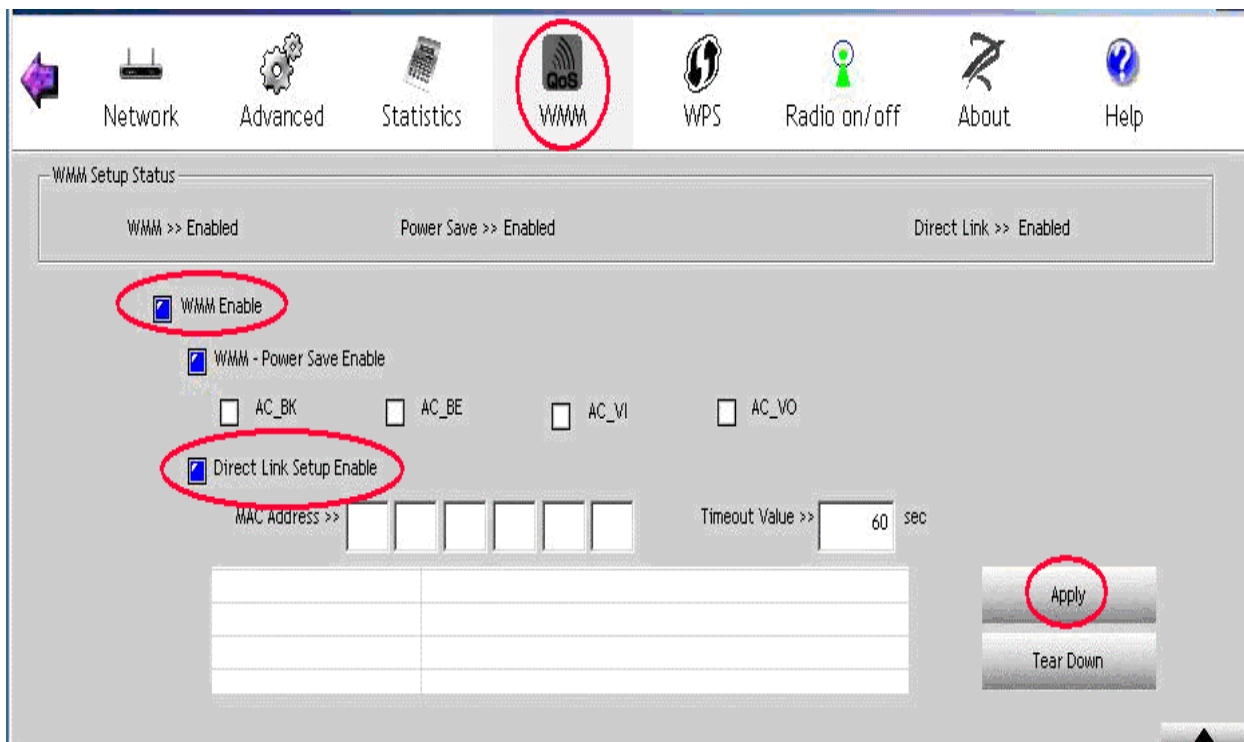
Transmit **Receive**

Frames Received Successfully	=	797
Frames Received With CRC Error	=	4407
Frames Dropped Due To Out-of-Resource	=	0
Duplicate Frames Received	=	0

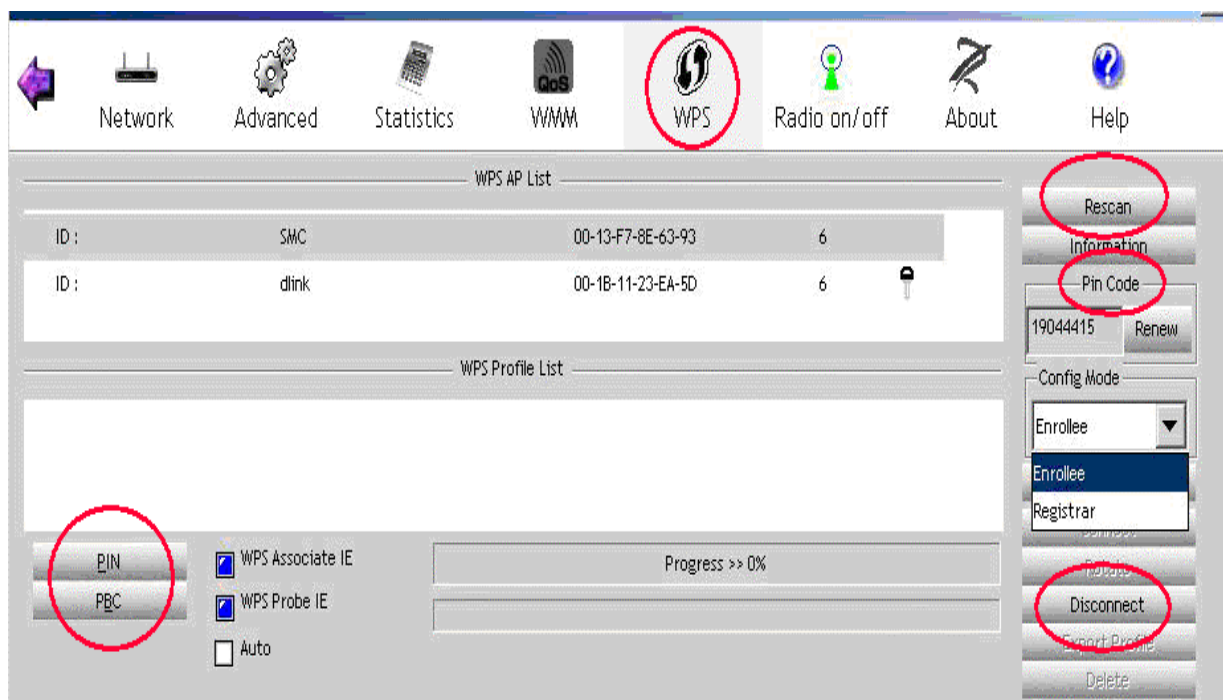
Reset Counter

WMM page:

802.11b/g/n USB dongle
AWUN3121 / ARGtek



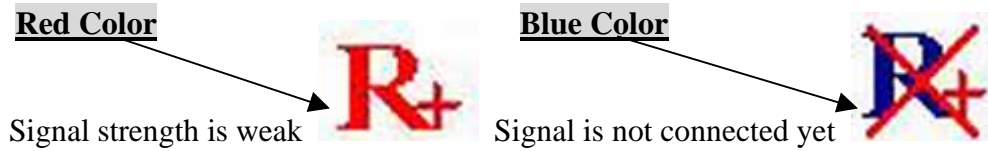
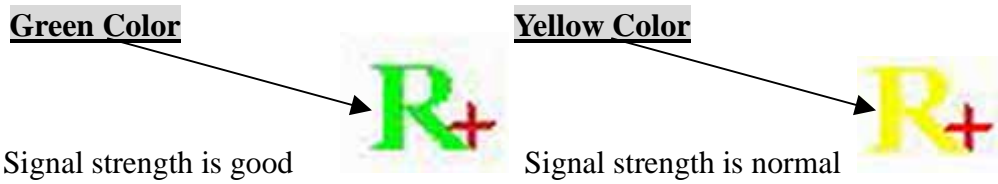
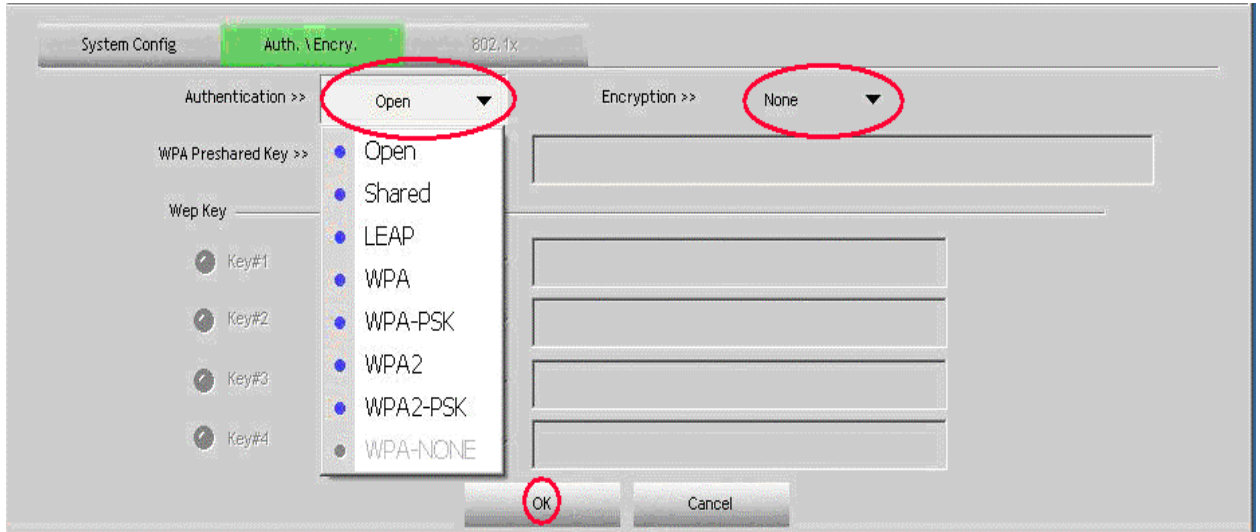
WPS page:



2. Status Section:

Authentication Status

802.11b/g/n USB dongle
AWUN3121 / ARGtek



802.11b/g /n USB dongle
AWUN3121 / ARGtek

This equipment has been tested and found to comply with the limits for a class B digital device, pursuant to part 15 of the FCC rules. These limits are designed to provide to provide reasonable protection against harmful interference in a residential installation. This equipment generates, uses and can radiate radio frequency energy and, if not installed and used in accordance with the installation. , May cause harmful interference to radio communication. However, there is no guarantee that interference Will not occur in a particular installation. if this equipment does cause harmful interference to radio or television reception, which can be determined by turning the equipment off and on, the user is encouraged to try to correct the interference by one or more of the following measures:

- Reorient or relocate the receiving antenna
- Increase the separation between the equipment and receiver
- Connect the equipment into an outlet on a circuit different from that to which the receiver is connected
- Consult the dealer or an experienced radio / TV technician for help

You are cautioned that changes or modifications not expressly approved by the party responsible for compliance could void your authority to operate the equipment.

FCC RF radiation exposure statement:

- 1.This transmitter must not be co-located or operating in conjunction with any other antenna or transmitter.
- 2.this equipment complies with FCC RF radiation exposure limits ser forth for an uncontrolled environment. This equipment should be installed and operated with a minimum distance of 20 centimeters between the radiator and your body .