

# **802.11g WLAN/Bluetooth Combo USB Dongle**

## **User Manual**

**Ver 1.0**

## **FEDERAL COMMUNICATIONS COMMISSION**

This device complies with Part 15 of the FCC Rules. Operation is subject to the following two conditions:(1) this device may not cause harmful interference, and (2) this device must accept any interference received, including interference that may cause undesired operation.

## **NOTE**

This equipment has been tested and found to comply with the limits for a Class B digital device, pursuant to Part 15 of the FCC Rules. These limits are designed to provide reasonable protection against harmful interference in a residential installation. This equipment generates, uses and can radiated radio frequency energy and, if not installed and used in accordance with the instructions, may cause harmful interference to radio communications. However, there is no guarantee that interference will not occur in a particular installation. If this equipment does cause harmful interference to radio or television reception, which can be determined by turning the equipment off and on, the user is encouraged to try to correct the interference by one or more of the following measures:

- Reorient or relocate the receiving antenna.
- Increase the separation between the equipment and receiver.
- Connect the equipment into an outlet on a circuit different from that to which the receiver is connected.
- Consult the dealer or an experienced radio/TV technician for help.

Changes or modifications not expressly approved by the party responsible for compliance could void the user's authority to operate the equipment.

The antenna(s) used for this transmitter must not be co-located or operating in conjunction with any other antenna or transmitter

## Table of Contents

Chapter 0. Introduction .....	5
■ Package Contents .....	5
■ Form Factor .....	5
■ System Requirements for Configuration:.....	5
Chapter 1. Wireless LAN Network .....	7
1.1 Overview.....	7
1.1.1 SSID.....	7
1.1.2 Channel .....	7
1.1.3 Transmission Rate (Tx Rate).....	7
1.1.4 Wireless Network Application .....	7
Ad-Hoc (IBSS) .....	8
Access Point Mode .....	8
Chapter 2. How to Install WLAN/Bluetooth driver and Utility .....	10
Software Setup.....	10
Hardware Setup .....	11
Chapter 3. Windows XP Installation Notes.....	13
Chapter 4. How to use the WLAN Utility(Station) .....	15
4.1 802.11g USB 2.0 WLAN Dongle Configuration Tools .....	15
4.2 Open the WLAN Utility . .....	15
4.3 More Setting ... .....	16
4.3.1 “General Connection Setting” group: .....	16
SSID :.....	16
Channel : .....	16
TX Rate : .....	16
Network Type :.....	16
Encryption :.....	16
Authentication Mode : .....	16
4.3.2 Encryption Setting : .....	17
4.2.4 “Other” group: .....	18
4.2.5 Information .....	19
Chapter 5. How to use the WLAN Utility(Access Point) .....	20
5.1 Introduction.....	20
Additional Setup Requirement.....	20
5.2 The 802.11g WLAN dongle Utility Screen.....	20
Chapter 6. How to use the Bluetooth Utility .....	22
6.1 Open Bluetooth utility.....	22

---

6.2 Local <i>Bluetooth</i> Device .....	22
6.3 Remote <i>Bluetooth</i> Devices.....	22
Icon Meanings .....	23
6.4 Bluetooth Service Buttons of Remote Device.....	23
Icon Meanings .....	24
6.5 Local Service List.....	24
6.6 Bluetooth Connection Management.....	25
Find Remote Devices.....	25
Inquire Device.....	25
Add Device from History List .....	25
Add a New Device by Entering Device Address.....	25
6.7 Connect and Disconnect.....	25
Connect .....	25
Disconnect.....	25
Chapter 7. Troubleshooting .....	27
7.1 Problems Starting the WLAN Utility Program .....	27
7.2 Problem with the Link Status.....	27
Appendix A .....	28
Ad-Hoc(Peer to Peer) Mode Setup .....	28
❑ Application : Access the Internet without an AP .....	28
❑ Check whether the Setup is success.....	33
❑ Application : Data sharing between computers .....	34

## Chapter 0. Introduction

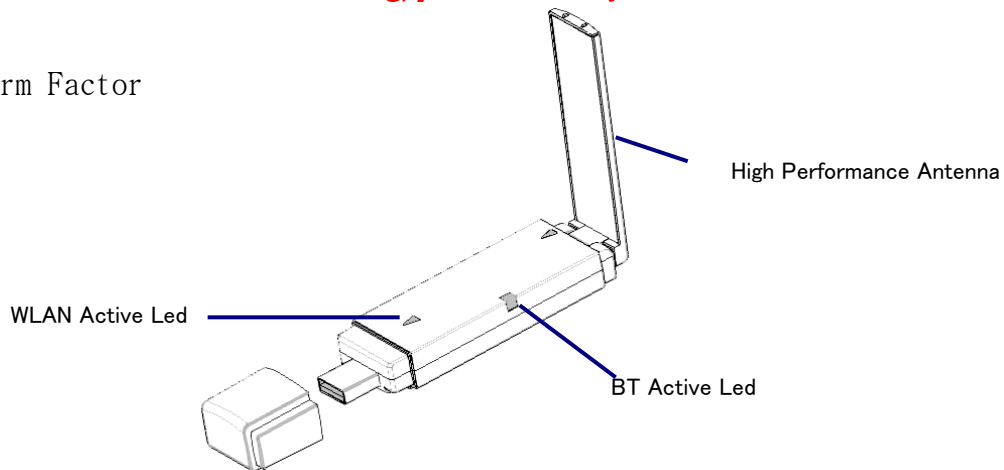
Thank you for using our WLAN/Bluetooth Combo product. This installation guide will help you install WLAN/Bluetooth Combo product and connect to the Internet quick & easy.

### ■ Package Contents

1. WLAN/Bluetooth Combo USB 2.0 Dongle
2. Quick Installation Guide
3. Manual & Driver on CD Disc
4. USB cable (Optional)

*If any of the above items are missing, please contact your reseller.*

### ■ Form Factor




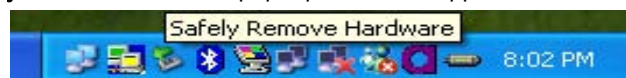
### ■ System Requirements for Configuration:

- A laptop or notebook computer with an available usb port(2.0 or 1.1)
- Windows XP, Windows 2000, Windows Me, or Windows 98SE
- At least 32 MB of memory and a 300 MHz processor
- An 802.11g or 802.11b Access Point (*for Infrastructure mode*), or another 802.11g or 802.11b wireless adapter (*for Ad-Hoc, peer-to-peer networking mode*.)

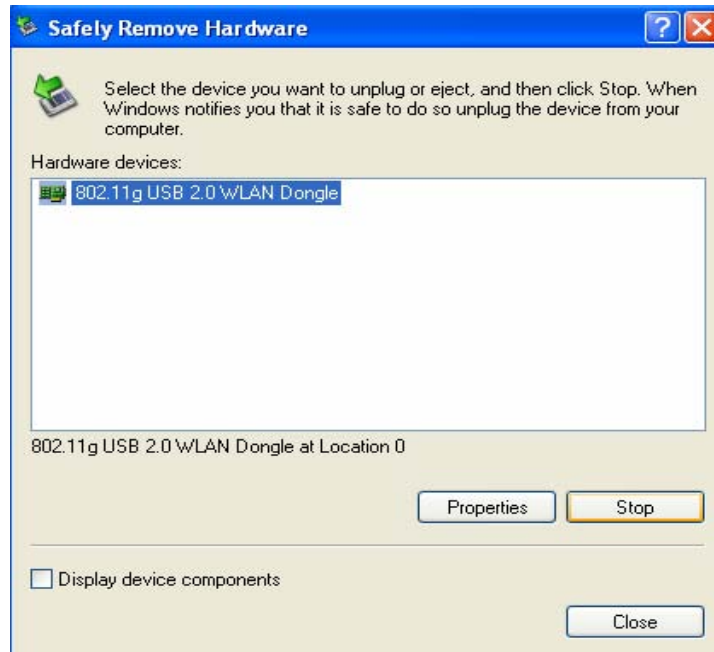


1. **Note: USB port version 2.0 is required for 11g performance. To take full advantage of this adapter's features, please upgrade the USB port on your laptop or PC to version 2.0.**
2. **Remove 802.11g WLAN/Bluetooth Combo USB 2.0 Dongle**

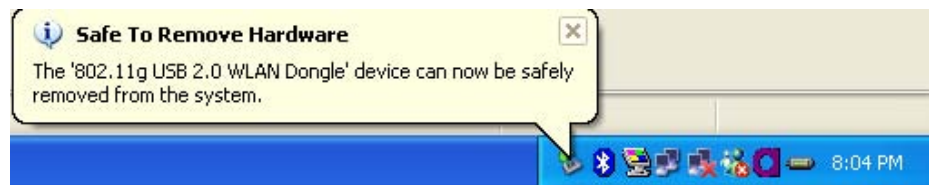
- ◇ Select the icon in the system tray. 
- ◇ The **Safely Remove Hardware** pop-up menu will appear. Select to continue.



- ✧ The **Safely Remove Hardware** window will appear. Select **802.11g USB 2.0 WLAN Dongle** and then select **Stop** to continue.



- ✧ The **Safe To Remove Hardware** message balloon will appear. You may now safely unplug your **WLAN/Bluetooth Combo Products** from your computer.



## Chapter 1. Wireless LAN Network

### 1.1 Overview

This section describes the wireless LAN network terms and applications.

#### 1.1.1 SSID

The SSID (Service Set Identity) is a unique name shared among all wireless devices in a wireless network. Wireless devices must have the same SSID to communicate with each other.

#### 1.1.2 Channel

A radio frequency used by a wireless device is called a channel.

#### 1.1.3 Transmission Rate (Tx Rate)

The [WLAN/Bluetooth Combo USB 2.0 Dongle](#) provides various transmission (data) rate options for you to select. Options include [Auto](#), [1 Mbps](#), [2 Mbps](#), [5.5 Mbps](#), [11 Mbps](#), [6 Mbps](#), [9 Mbps](#), [12 Mbps](#), [18 Mbps](#), [24 Mbps](#), [36 Mbps](#), [48 Mbps](#), and [54 Mbps](#). In most networking scenarios, the factory default Auto setting proves the most efficient. This setting allows your WLAN/Bluetooth Combo Dongle to operate at the maximum transmission (data) rate. When the communication quality drops below a certain level, the WLAN/Bluetooth Combo Dongle automatically switches to a lower transmission (data) rate. Transmission at lower data speeds is usually more reliable. However, when the communication quality improves again, the WLAN/Bluetooth Combo Dongle gradually increases the transmission (data) rate again until it reaches the highest available transmission rate. You can select any of the above options. If you wish to balance speed versus reliability, select 48 Mbps or 54 Mbps in a networking environment where you are certain that all wireless devices can communicate at the highest transmission (data) rate. 1 Mbps or 2 Mbps are used often in networking environments where the range of the wireless connection is more important than speed.

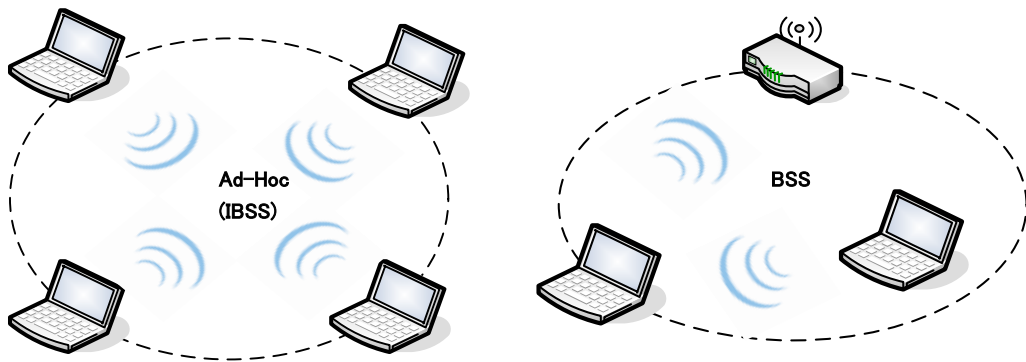
#### 1.1.4 Wireless Network Application

Wireless LAN works in either of the two modes: ad-hoc and infrastructure. To connect to a wired network within a coverage area using Access Points (APs), set the WLAN Dongle operation mode to Infrastructure (BSS). An AP acts as a bridge between the wireless stations and the wired network. In case you do not wish to connect to a wired network, but prefer to set up

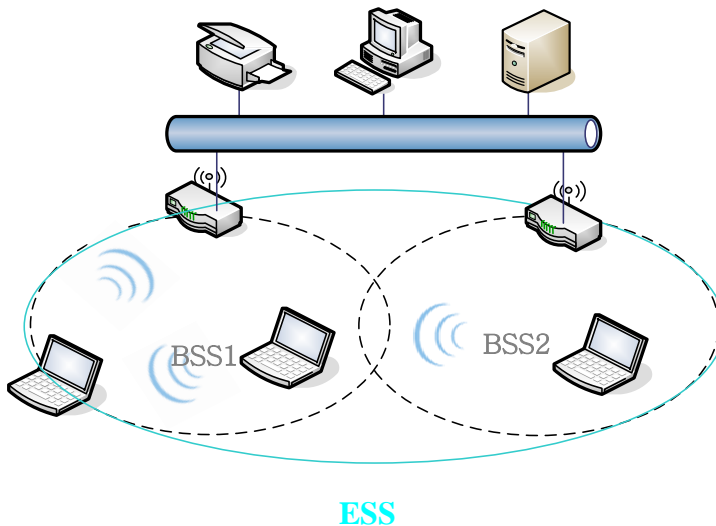
a small independent wireless workgroup without an AP, use the Ad-hoc (IBSS) (Independent Basic Service Set) mode.

### Ad-Hoc (IBSS)

Ad-hoc mode does not require an AP or a wired network. Two or more wireless stations communicate directly to each other. An ad-hoc network may sometimes be referred to as an Independent Basic Service Set (IBSS).



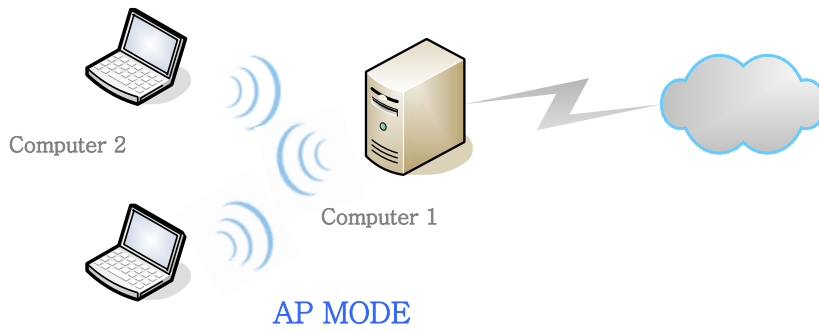
A series of overlapping BSS and a network medium, such as an Ethernet forms an Extended Service Set (ESS) or infrastructure network. All communication is done through the AP, which relays data packets to other wireless stations or devices connected to the wired network. Wireless stations can then access resource, such as the printer, on the wired network.



### Access Point Mode

The following figure depicts a network example in which you set the WLAN/Bluetooth Combo USB 2.0 Dongle in access point mode.





In the example, the **WLAN/Bluetooth Combo USB 2.0 Dongle** is installed on computer A and set to operate in access point mode. Computer 1 shares Internet connection to the wireless LAN, so wireless computer 2 and 3 can access the Internet.

## Chapter 2. How to Install WLAN/Bluetooth driver and Utility

Please read and follow the instructions below.

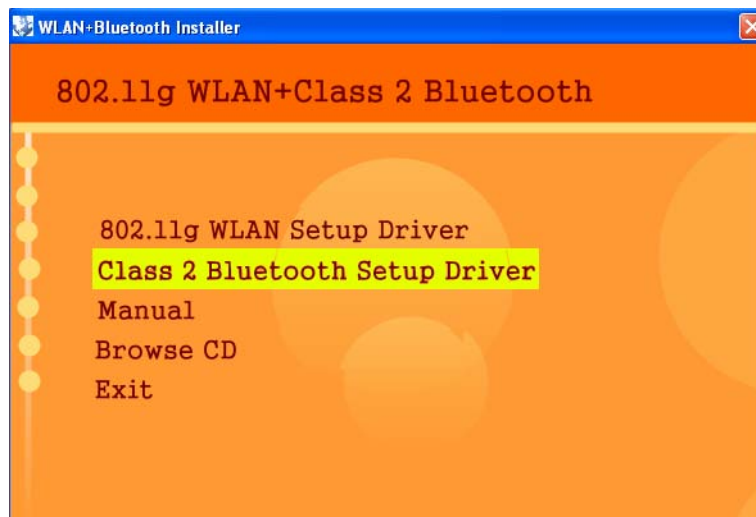
### ■ Software Setup

#### 2.1 Insert the supplied Setup CD

Insert the supplied Setup CD into your CD-ROM drive , and you'll see the software installation window as shown below. (please direct to next)



2.2 Click “Class 2 Bluetooth Setup Driver”(Installation Windows), and choose the “default” item through the installation process.



2.3 Following screen appears , click “Yes” to countinue



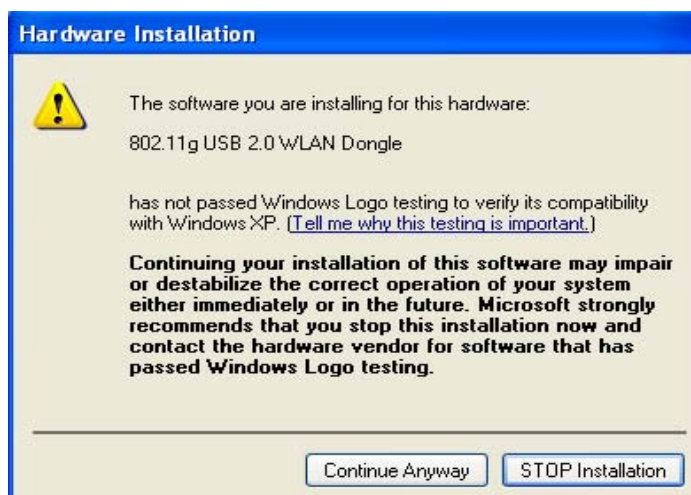
## 2.4 Reboot Your PC

### ■ Hardware Setup

- 2.5 After plugging WLAN/Bluetooth Combo USB 2.0 Dongle, the USB stick, into your PC, it will automatically find and alert a New USB Device. Click "Next" to continue



- 2.4 When the following screen appears, click "Continue Anyway" to continue.



- 2.5 Your PC will recognize the device of “802.11g USB 2.0 WLAN Dongle”, and click “Next” to install driver.
- 2.6 Finally, click the “Finish” to leave this dialogue window.
- 2.7 After successful installation, you’ll see the new icon appear in the Icon Tray.



Double-click the icon to launch the application and open the configuration tools dialog box to configure your adapter.

For more details about WLAN’s configuration tools, please refer to Figure 4-1.

## Chapter 3. Windows XP Installation Notes

Windows XP has a built-in configuration tool, **Windows XP Wireless Zero Configuration**, available to assist you in managing your wireless networks. you use the provided **WLAN/Bluetooth Combo USB Dongle** to manage your adapter. To use the Zero Configuration tool, refer to Chapter 5.

**When you use the Windows XP configuration tool and the WLAN Utility to configure the WLAN Dongle at the same time, the WLAN Utility icon does not display or is grayed out.**

To use the **Wireless LAN Configuration Tool Plus** under Windows XP, you need to disable the default settings of your **Windows XP Wireless Zero Configuration** utility.

Follow the procedure below.

1. Right-click the **Wireless LAN Configuration Tool Plus** to **Exit** from the program. Do this before you try to access Windows XP Wireless Zero Configuration. See Figure 3-1 and Figure 3-2.



Figure 3-1 Wireless LAN Configuration Tool Plus Icon

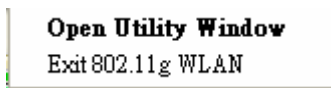


Figure 3-2 Right-click Menu of the System Tray Icon

2. Right-click the **Network Connections** icon in the task bar to open the **Wireless Network Connection Status** dialog box. Select **Properties**. See Figure 3-3.

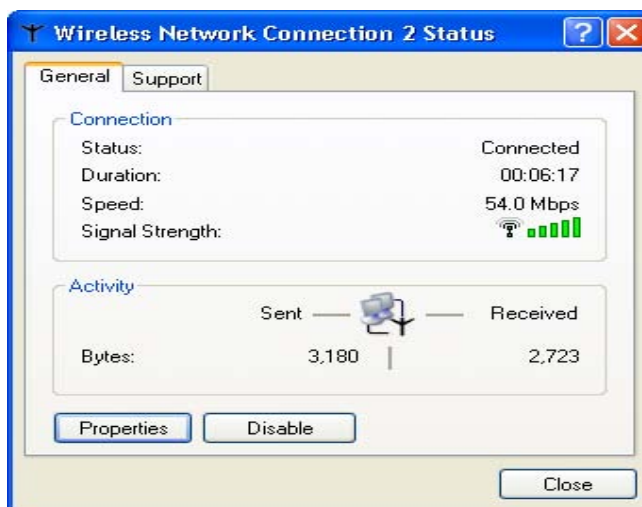


Figure 3-3 Wireless Network Connection Status Dialog Box

3. Choose the **Wireless Networks** tab in the Wireless Network Connection Properties dialog box, and uncheck the **Use Windows to configure my wireless network settings** checkbox. See Figure 3-4.

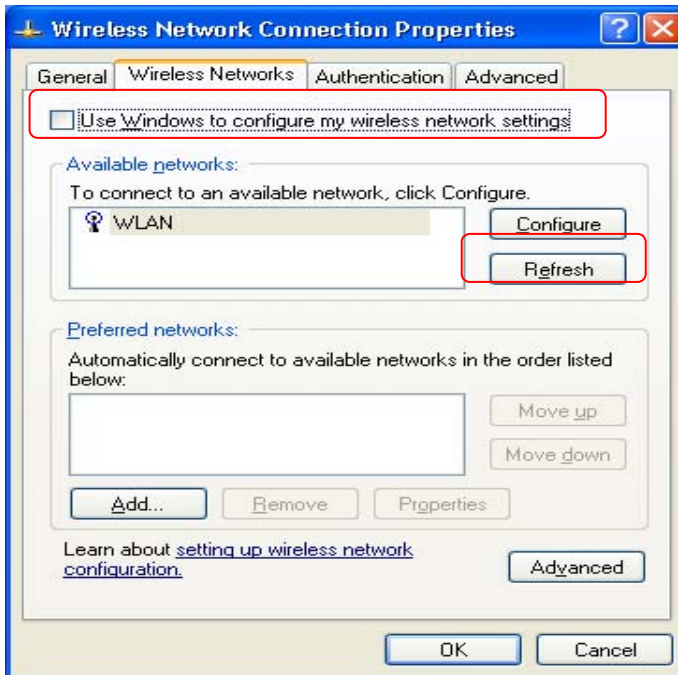


Figure 3-4 Wireless Network Connection Properties Dialog Box

4. Click **OK**. The Windows XP Wireless Zero Configuration is now disabled. You can now monitor and configure the adapter via **Wireless LAN Configuration Tool Plus**. For more information on the **Wireless LAN Configuration Tool Plus**, please refer to Figure 4-1, Configuration Utility. If you wish to use the Windows XP Wireless Zero Configuration, refer to Figure 3-4, Using Wireless Zero Configuration for Managing the Adapter.

## Chapter 4. How to use the WLAN Utility(Station)

### 4.1 802.11g USB 2.0 WLAN Dongle Configuration Tools

If you use the WinXP OS , the “Zero Configuration” of WinXP will be disable first , then WLAN Utility can be used.

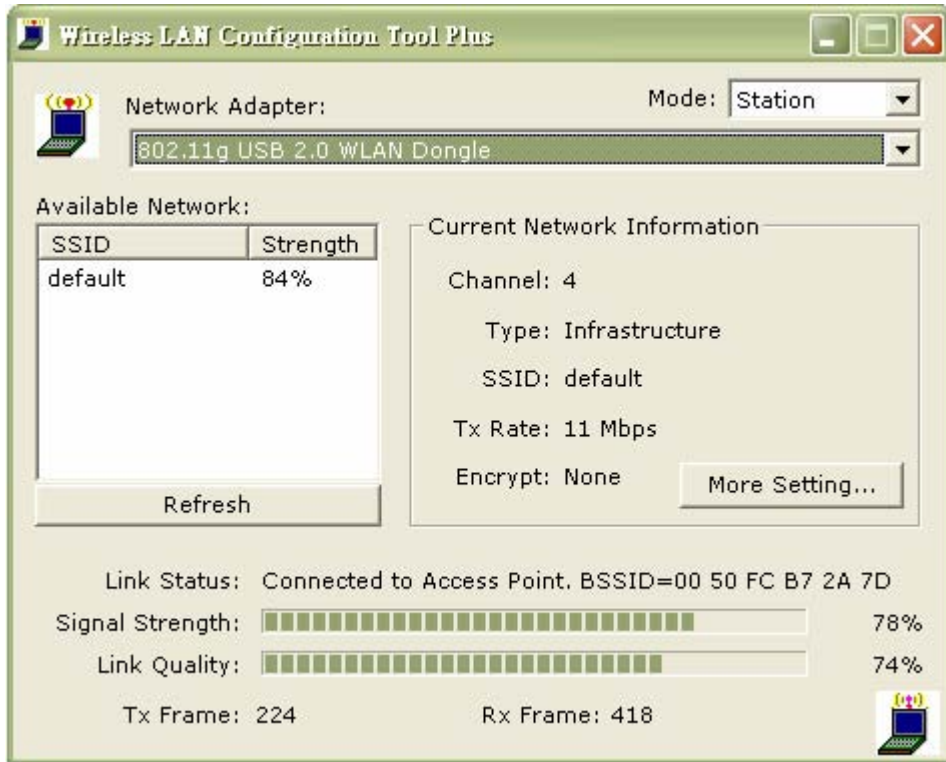


Figure 4-1

### 4.2 Open the WLAN Utility .

The Window is as shown in “Figure 4-1”.

The adapter can be set at “Station” or “Access Point” Mode from the Mode drop down menu. Station mode is selected for the document.

- You can site survey the neighboring **SSID** site by pressing the “**Refresh**”, then sites name and signals strength of available **SSID** sites are shown on the “**Available Network**” field.
- Double click the SSID site from “Available Network” field, and the SSID can be connected directly.
- The information of the SSID is shown on the “ Current Network Information”.
- Show the BSSID of connecting AP on the “Link Status” filed.
- “Signal Strength” and “Link Quality” shown on diagrammatic curve, and described with percentage.
- Record the number of Tx frames on the filed of “Tx Frame”.
- Record the number of Rx frames on the filed of “Rx Frame”.

pressed.

- Press “Change” button for modifying the status, when the modification is finished, press “Apply” to save it. The button “**Change**” and “**Apply**” is alternately shown on the same position.

**SSID :**

The **SSID** (Service Set Identifier), also known as the Network Name, must be unique to distinguish itself as a particular wireless network. All wireless points in the network area share the same SSID. Type your network SSID in the SSID field to associate with access points or stations within the specified wireless LAN.

**Channel :**

This is the radio channel used by wireless devices within the network for communication. This command is only available while you are operating in the Ad hoc mode. Specify the operating radio frequency channel from the pull-down menu if you are the creator of the wireless network. If you are joining an existing network you do not need to select the channel; configure the SSID and click **Apply** changes.

**TX Rate :**

Select the transmission rate by “ Tx Rate” drop down menu.

**Network Type :**

Select the “Ad\_Hoc” or “Infrastructure” Mode by the “Network Type” drop down menu.

**Encryption :**

Select the “**Enable WEP**” or “**Disable WEP**” by the “Encryption” drop down menu.

**Authentication Mode :**

Select the “**Open System**” , “**Shared Key**” mode or “**Auto**” from the “Authentication Mode” drop down menu.



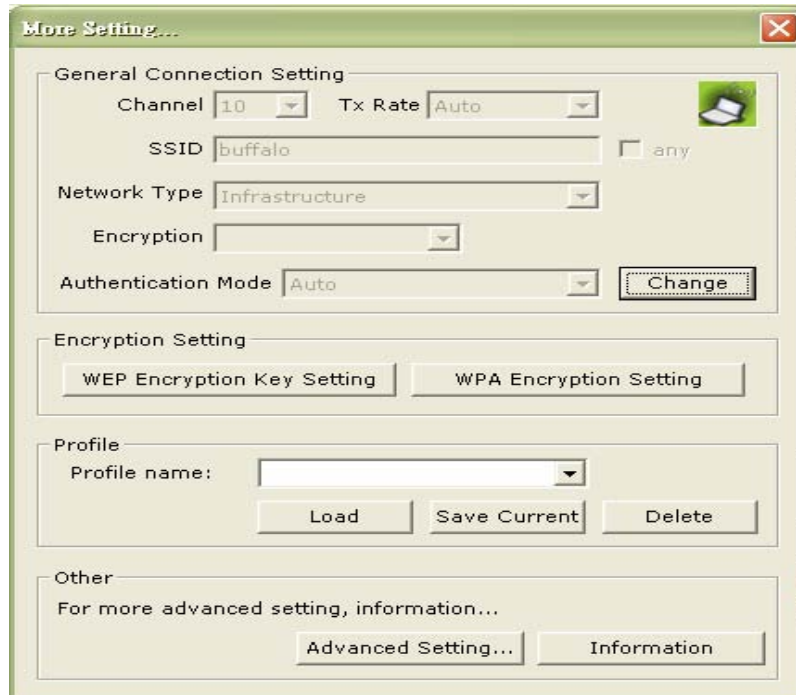


Figure 4-2

#### 4.3.2 Encryption Setting :

Press “WEP Encryption Key Setting” to enter the “WEP Key Setting” page shown as Figure 4-3.

- Select the “Open System” , “Shared Key” mode or “Auto” from the “authentication Mode” drop down menu.
- Press the “Change” button to modify the contents of “WEP Key setting”, when it is finished, press “Apply” to save it. The button “Change” and “Apply” is alternately shown on the same position.
- Select which key length 64,128 or 256 bits will be modified or used by “Key Length” item.
- Select which key set will be use by the field of “Default Key ID”
- Modify the 4 sets key depending on the selected key length on the field of “Key Value”. The key value is used the hexadecimal format.

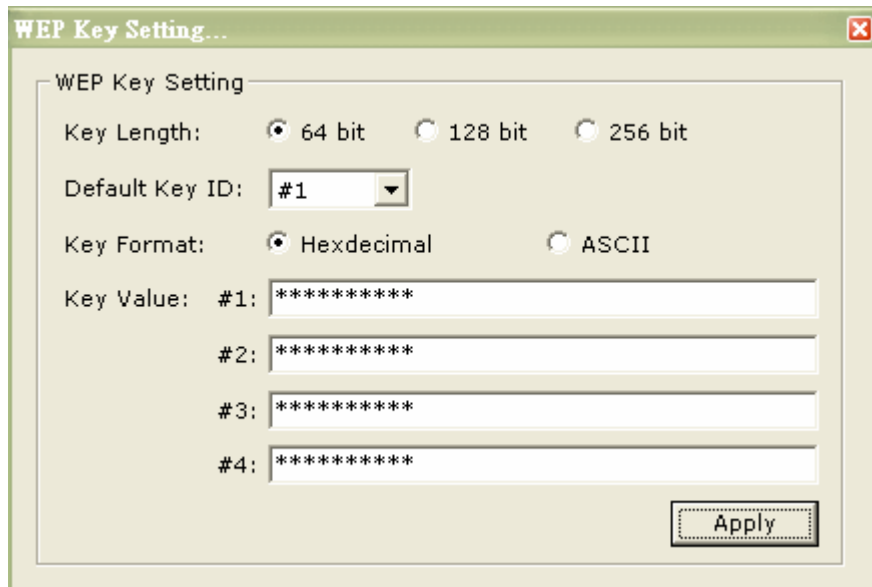


Figure 4-3

#### 4.3.3 “Profile ” group:

- Select the profile(Figure 4-2) that has been saved previously from the “Profile name” drop down . menu, then press “Load ” button to load the status to use.
- Write the profile name on the field of “Profile name”, and press the “Save Current” button to save the current status on the profile.
- Select the profile name that wanted to delete from the “Profile name” drop down menu, and press “Delete” button to delete it

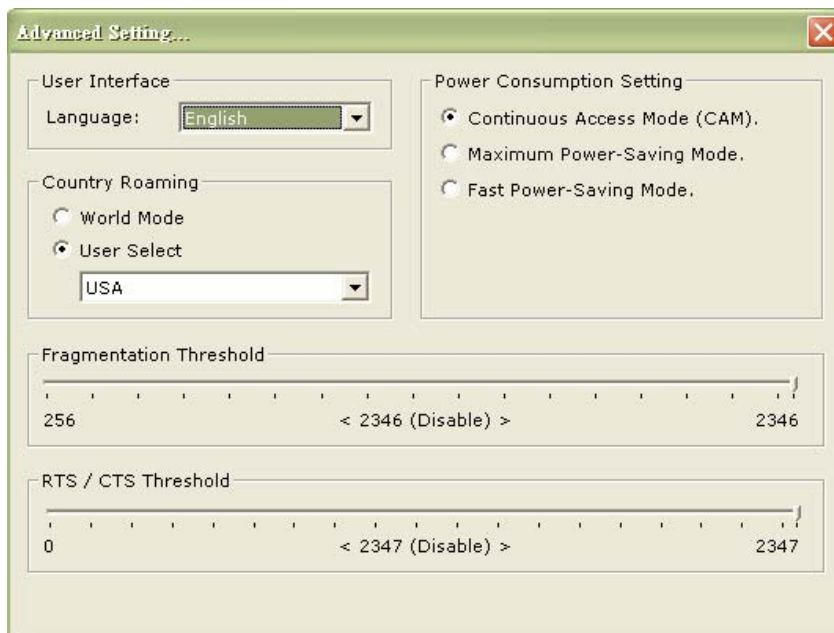
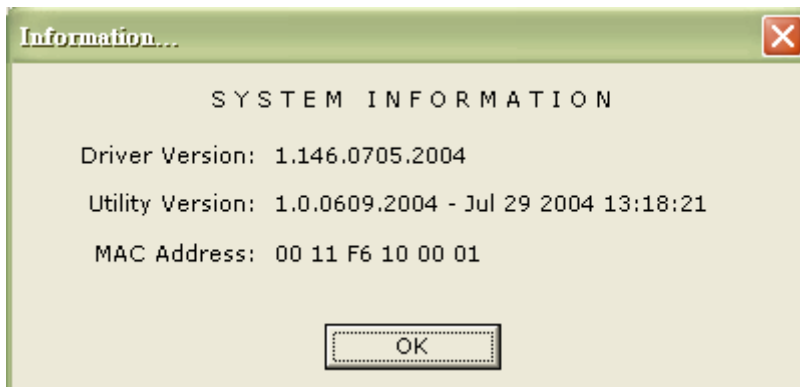


Figure 4-4

#### 4.2.4 “Other” group:

shown as Figure 4-4.

- Select the Window User Interface by the “Language” down drop menu. If the English item is selected, all functions of window are described with English. Select the Traditional Chinese item, and they are described with Traditional Chinese.
- At “Power consumption Setting” group, select which power save level want to be set by checking CAM Mode, Fast Power-Saving mode or Maximum Power-Saving mode. The default is CAM mode. If the most save mode want to use, select the Maximum Power-Saving mode, but its throughput is lower than CAM and Fast Power-Saving mode. The throughput of “Fast Power-Saving mode” is better than “Maximum Power-Saving mode”, but its power save is less than “Maximum Power-Saving mode”.
- At “Fragmentation Threshold” bar, drop and move cursor to set the fragmentation threshold point, the range is from 256 to 2346 bytes.
- At “RTS / CTS Threshold” bar, drop and move the cursor to set the RTS threshold point, the range is from 0 to 2347 bytes.



**Figure 4-5**

#### 4.2.5 Information

Press the “Information” button to enter the “Information” page shown as Figure 4-5. It includes the Driver version, Utility Version and MAC Address.

## Chapter 5. How to use the WLAN Utility(Access Point)

### 5.1 Introduction

To set your 802.11g USB 2.0 WLAN dongle as an Access Point(AP) , reference In Access Point mode , your 802.11g USB 2.0 WLAN dongle as an AP . this allows you to set up your wireless network without using a dedicate AP device. Up to 16 wireless station can associate to 802.11g USB 2.0 WLAN dongle.

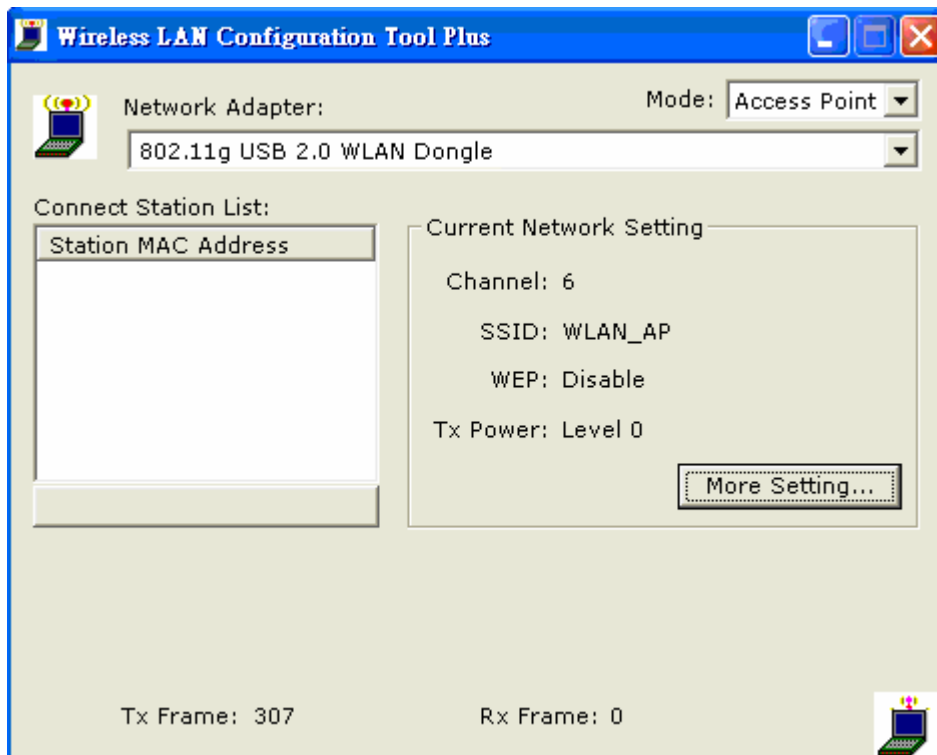
#### Additional Setup Requirement

To bridge wireless and wired using the 802.11g USB 2.0 WLAN dongle, The following requirement must be met.

1. The 802.11g USB 2.0WLAN dongle must be installed a computer connect to the wired network.
2. Either configure network sharing or bridge the two interfaces(Wireless & Wired) on the computer.
3. Set the wireless station's IP address to be in the same subnet as the computer in which 802.11g WLAN dongle is installed.

### 5.2 The 802.11g WLAN dongle Utility Screen

5.2.1 Select "ACCESS POINT" in the MODE field to display the screen as shown.



ACCESS POINT Mode

5.2.2 click "More Setting..." in the 802.11g USB 2.0 WLAN dongle screen to display the screen as shown.

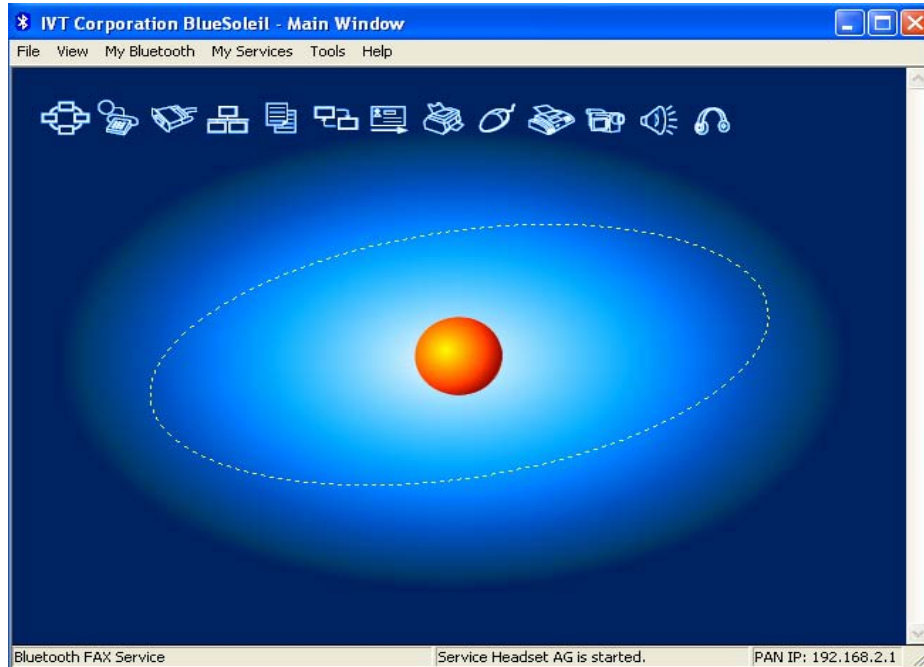
The screenshot shows a window titled "Access Point Setting" with a blue title bar and a close button (X) in the top right corner. The window contains the following settings:

- General Connection Setting:**
  - Channel: 6 (dropdown menu)
  - Basic Rate: 1, 2, 5.5, 11 Mbps (dropdown menu)
  - SSID: WLAN\_AP (text field)
  - Hide SSID
  - Tx Power: Level 0 (Maximum Power) (dropdown menu) with a "Change" button to its right.
- Security:**
  - WEP: Disable (dropdown menu) with a "Setting" button to its right.
  - Authentication Mode: Open System (dropdown menu)
  - Fragment: slider set to the right, labeled "Disable".
  - RTS/CTS: slider set to the right, labeled "Disable".
  - Preamble: Long (dropdown menu)
  - MAC Address Filter: "Setting" button.
- Bridge Adapter:**
  - Bridge Adapter: No bridge (dropdown menu)

## Chapter 6. How to use the Bluetooth Utility

### 6.1 Open Bluetooth utility

Double-click the Bluetooth icon to launch the application and open the configuration tools dialog box to configure your adapter.



### 6.2 Local *Bluetooth* Device

The Local *Bluetooth* enabled device, known as "**My Device**", represents the user's computer that is running BlueSoleil.

Operations:

- Hover mouse to display the local *Bluetooth* device's name or address (if without name).
- Click on the red ball to start or stop searching for *Bluetooth* devices in range.
- Right-click on the red ball to display a pop-up menu of related operations (e.g., General Inquiry, My Services, Security, etc.).

### 6.3 Remote *Bluetooth* Devices

Remote devices are other *Bluetooth* enabled devices that are in the *Bluetooth* radio range of your local device. BlueSoleil uses different icons to indicated different types of remtoe devices..

**Icons**

Devices	Icon	Devices	Icon
Personal Computer		Laptop	
Modem		Mobile	
PDA		LAN Access Point	
Keyboard		Mouse	
Microphone		HiFi Audio	
Loud Speaker		Headset	
Printer		Scanner	
FAX		Camera	
Game bar		Server	
Unknown device			

**Icon Meanings**

Remote devices can be in any of three states, which BlueSoleil indicates with different colors.

- White– Idle. The normal state of the device.
- Yellow– Selected. you have selected the device.
- Green– Connected. The device is connected to your computer.

**Operations Single-click on the icon to select.**

- Double-click on the icon to search for the services supports by the remote Bluetooth device .
- Right-click on the icon to display a pop-up menu of related operations (e.g. Refresh Services, Pair Devices, Connect, etc.).

**6.4 Bluetooth Service Buttons of Remote Device**

Service buttons at the top of the Main Window represent a range of *Bluetooth* services potentially supported by Remote Devices .

Services	Button Image	Services	Button Image
PAN		DUN	
SPP		LAP	
FTP		SYNC	
OPP		HCRP	
HID		FAX	
BIP		AV	
Headset			

### Icon Meanings

There are 3 states for the service icons, indicated by different colors.

- **White**- Idle. The normal state.
- **Yellow**- Available. The *Bluetooth* service is available on the selected remote device.
- **Green**- Connected. The *Bluetooth* service is active in a connection with the remote device.

### Operations

- Hover your mouse over the service icon to display the name of the service.
- Single-click on the service icon to connect.
- Right-click on the service icon to display a pop-up menu of related operations.

## 6.5 Local Service List

The Local Service List displays all the *Bluetooth* services supported by the local computer. Use this screen to start/stop services.

Services	Icons	Services	Icons
PAN		SPP	
OPP		FTP	
SYNC		LAP	
A2DP		BIP	
Headset AG			



## 6.6 Bluetooth Connection Management

6.6.1 *Bluetooth* Connection Management includes:

### Find Remote Devices

To set up a *Bluetooth* connection, the remote device must be found first. There are 3 ways to find remote devices in BlueSoleil.

### Inquire Device

1. Single-click the red ball in the main window to start inquiry.
2. *Bluetooth* devices within the radio range will be shown around the center ball.
3. Wait for a few seconds until the names of all the devices are obtained.

### Add Device from History List

The devices which had been found or connected can be added from the history device list directly.

1. Select menu **Tools | Add Device from History...** The **History** dialog box pops up.
2. Select the device from the list and click button **Add**, the device will be added to the main window.

### Add a New Device by Entering Device Address

If the device cannot be found by **Inquiring**, you can enter the device address to add the device.

1. Select menu **Tools | Add New Device...** The **Add New Device** dialog pops up.
2. Enter the *Bluetooth* device address and click button **OK**, the device will be added to the main window.

*Note:* The device type will be unknown if add it by inputting its *Bluetooth* address.

## 6.7 Connect and Disconnect

### Connect

1. Select a remote device and double click it to browse its services. *Bluetooth* passkey may be asked if security level of either side is set to high and they are not paired devices. After service browsing, the services the remote device supports are highlighted by changing the color of the service buttons on the top of the main window.
2. Single click one of the service button to connect. After connection is setup, the remote device and the service button will turn green.

**Note:** Users can right click the remote device icon or the service button to pop up operation menu for connection.

### Disconnect

**Method 1:** Select the remote device, right click the service button. On the popup menu, select **Disconnect**.

**Method 2:** Right click the device icon. On the pop-up menu, select **Disconnect | (the connection you want to disconnect)**.

**Method 3:** For FTP and Synchronization connection, close the operation window, the connection will be disconnected.

**Method 4:** Disconnect from the remote device directly.

**Method 5:** If the local *Bluetooth* device is removed or the remote device is powered off, all the connections will be disconnected. If the remote device moves out of the radio range, all the connections with the remote device will be disconnected in 1 minute.

For more details about Bluetooth's configuration tools, please refer file "[English BlueSoleil UserManual 1.4.pdf](#)" (Double click)

## Chapter 7. Troubleshooting

### 7.1 Problems Starting the WLAN Utility Program

Cannot start the 802.11g WLAN dongle Wireless LAN Utility	Make sure the 802.11g WLAN dongle is properly inserted and the LED(s) is on.
	Use the Device Manager to check for possible hardware conflicts. Click Start, Settings, Control Panel, System, Hardware and Device Manager. Verify the status of the 802.11g WLAN dongle under Network Adapter. (Steps may vary depending on the version of Windows).
	Install the 802.11g WLAN dongle in another computer.
	If the error persists, you may have a hardware problem. In this case, you should contact your local vendor.
The 802.11g WLAN dongle Utility icon does not display	When the 802.11g Wireless LAN Utility icon does not display, you are using the Windows XP wireless configuration tool at the same time. Refer to the Chapter 3 to disable the Windows XP wireless configuration tool.

### 7.2 Problem with the Link Status

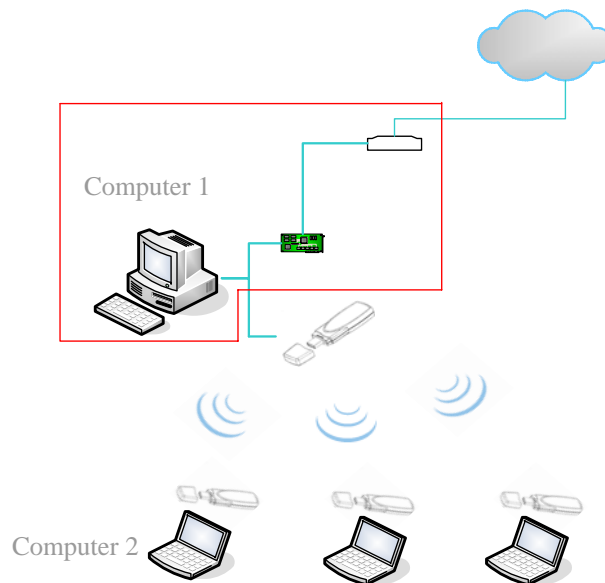
PROBLEM	CORRECTIVE ACTION
The link quality and/or signal strength is poor all the time.	Search and connect to another AP with a better link quality using the Site Survey screen. Move your computer closer to the AP or the peer computer(s) within the transmission range. There may be too much radio interference (for example microwave or another AP using the same channel) around your wireless network. Relocate or reduce the radio interference.
In wireless station mode, the computer with the 802.11g WLAN dongle installed cannot communicate with the other computer(s).	
A. Infrastructure	Make sure that the AP and the associated computers are turned on and working properly. Make sure the 802.11g WLAN dongle computer and the associated AP use the same SSID. Change the AP and the associated wireless clients to use another radio channel if interference is high. Make sure that the computer and the AP share the same security option and key. Verify the settings in the Security screen.
B. Ad-Hoc (IBSS)	Verify that the peer computer(s) is turned on. Make sure the 802.11g WLAN dongle computer and the peer computer(s) are using the same SS ID and channel. Make sure that the computer and the peer computer(s) share the same security option and key. Change the wireless clients to use another radio channel if interference is high.
In access point mode, the wireless station(s) cannot associate to the 802.11g WLAN dongle	Verify that the computer with the 802.11g WLAN dongle installed is turned on. Make sure the wireless station(s) uses the same SSID as the 802.11g WLAN dongle. Make sure the wireless station(s) uses the same security option and/or WEP keys. Verify that the wireless station(s) is not blocked in the MAC Filter screen.

## Appendix A

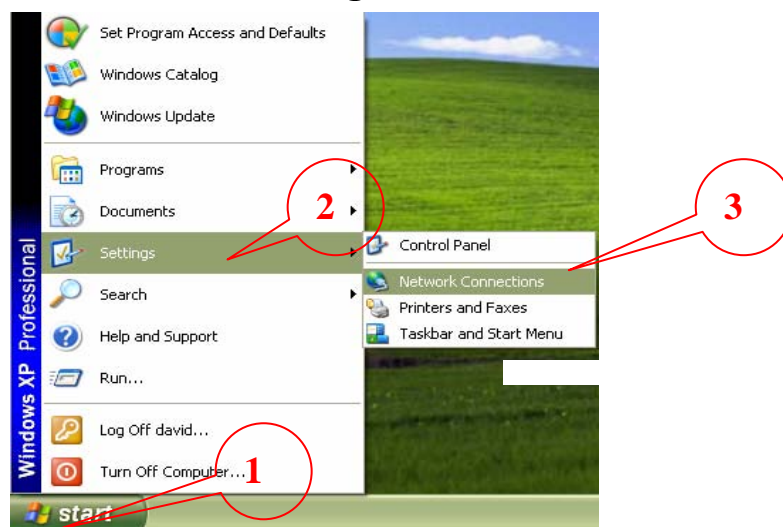
### Ad-Hoc(Peer to Peer) Mode Setup

#### ❑ Application : Access the Internet without an AP

With existing Internet connection, another computer can access the Internet by using AD HOC mode of 802.11g USB 2.0 WLAN dongle.



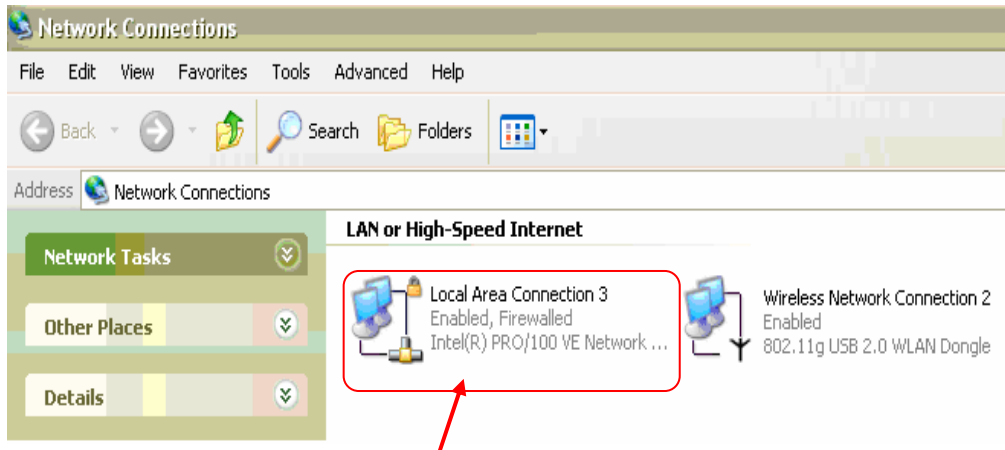
1. Check the current environment and install WLAN cards
  - A. Check whether “computer 1” connects to the Internet.
  - B. Install 802.11g WLAN dongle in “computer 1”, and “computer 2”.
2. “Computer 1” Setup
  - A. Click “Start” (1)→ Settings (2)→Click Network and Dial-up Connections(3)



- B. Under Network and Dial-up Connections, there are two Connection icons; one is the original Ethernet card, another is the new 802.11g WLAN dongle.

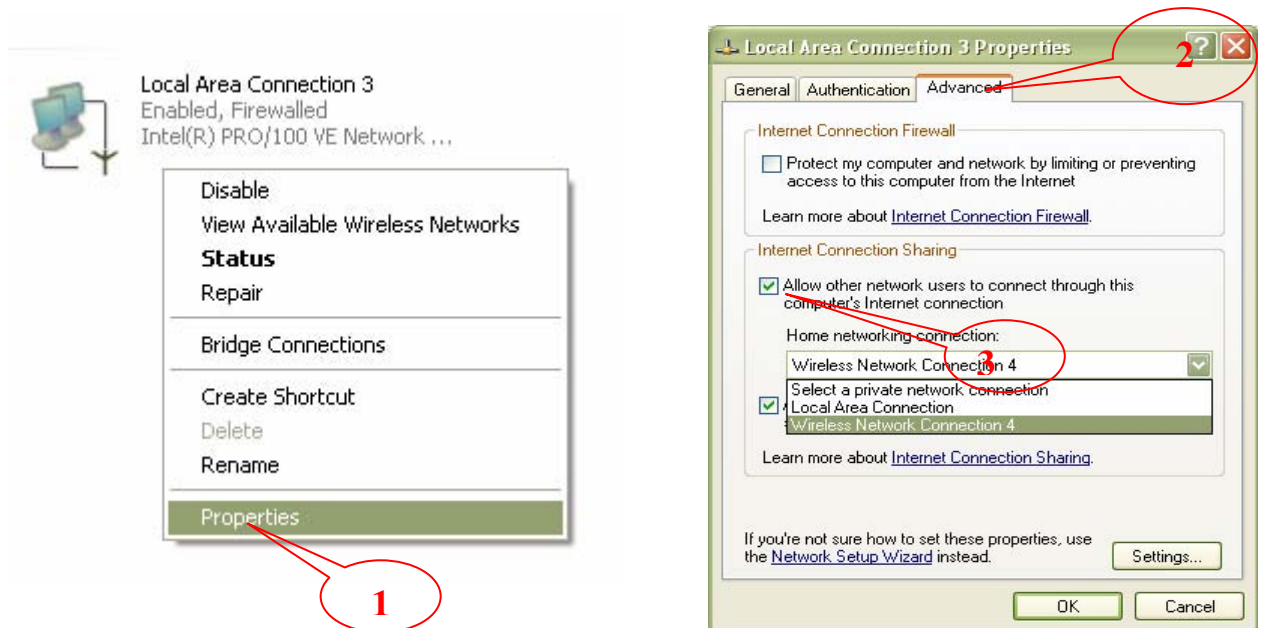
C. Check the status of the Connection icon. Click the Connection icon, and you can see the device name and status under Network Connections. The name of WLAN is “802.11g USB 2.0 WLAN Dongle”, and another one is the original connected device

PS: (If you have more than 2 connecting devices, please un-plug the Ethernet line and the disappear Connection icon is the original connected device.)

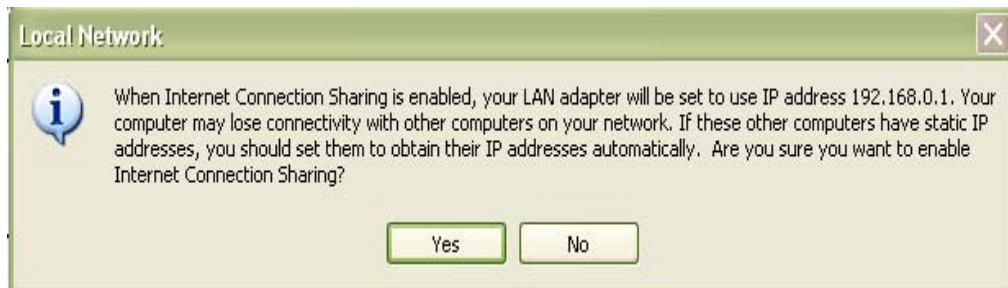


D. left click the original connected device, and enter into the following window.

Click Properties (1) -> Advanced (2) -> Check “Allow Other network to connect through this computer’s Internet connect”(3) -> OK



E. After finishing, the following window shows up. Please choose “Yes”, and the computer will set your IP address in 192.168.0.1.



F. Double click the WLAN Tools icon in Icon Tray, and enter into the “Software and Utility window”.



WLAN Tools:

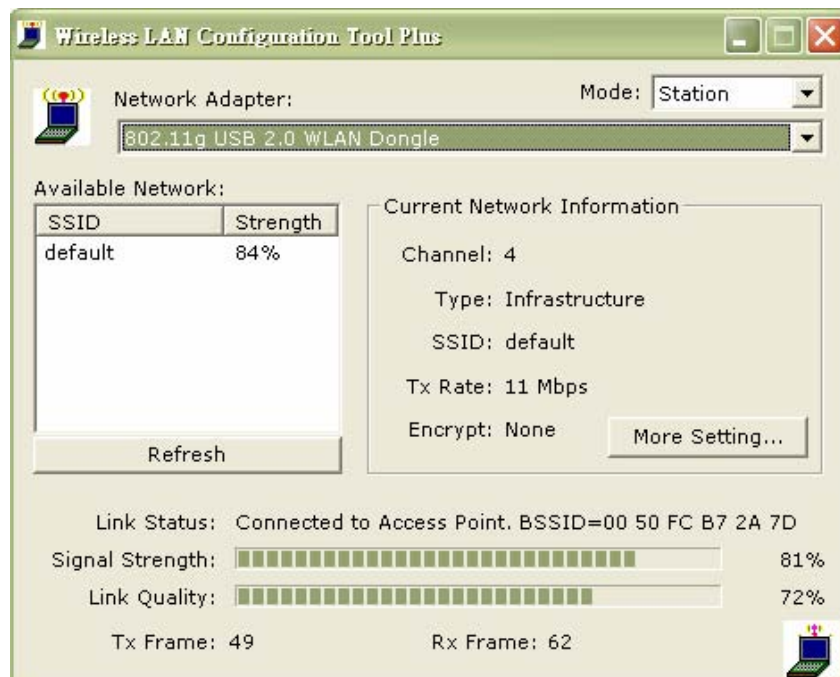


Figure A1-1

G. Change to the “Ad-Hoc” mode

I. Click “ More Setting “ icon of Figure A1-1 to enter “More setting “ window. The window is shown as “ Figure A1-2 ”.

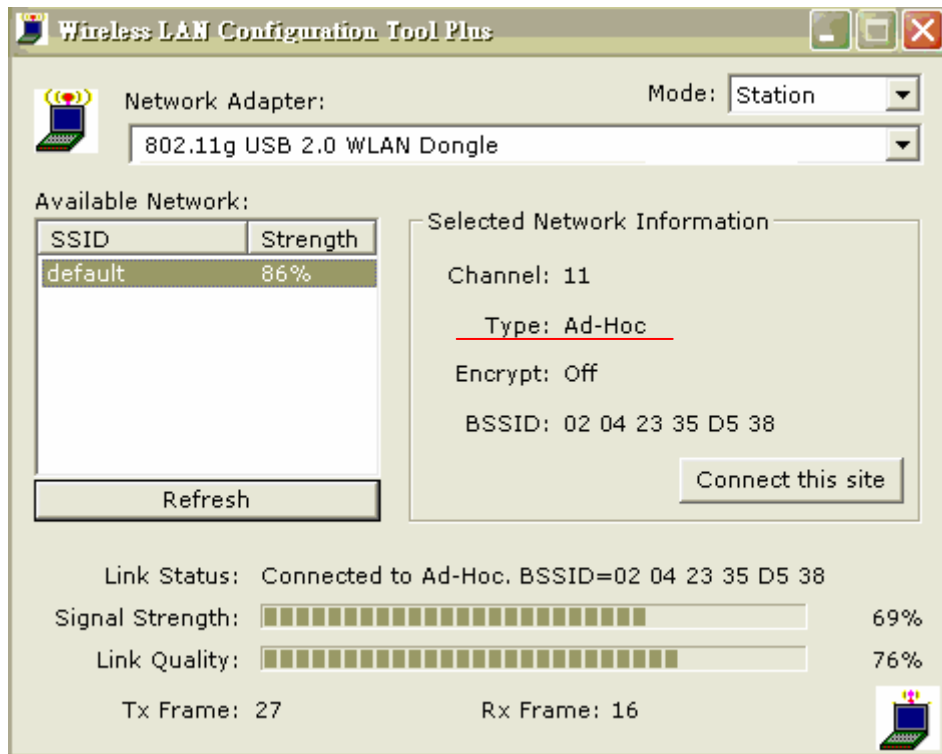


Figure A1-2

- II. Under WLAN Configuration tools click “Change” to modify the **Network Type** to “Ad-Hoc” mode.
- III. click “**apply**” to save this change. After setting, this WLAN card could be the Gateway for other WLAN devices.
- IV. Restart your computer.

## 2. “Computer 2” Setup

- I. Double click the WLAN Configuration tools icon in the Icon tray.
- II. Under Site survey window, you will see all available connecting instruments. Double click the item with SSID named “default”.
- III. Rest computer 2.

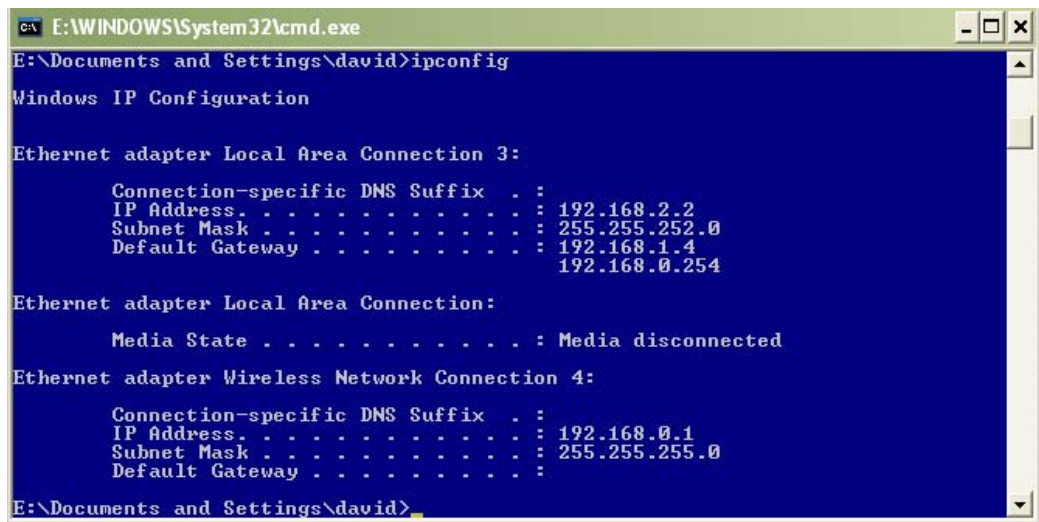




- ❑ Check whether the Setup is success

Computer 1:

1. Enter into DOS MODE, and type “IPCONFIG”.  
(Start -> Run -> Type cmd or command )



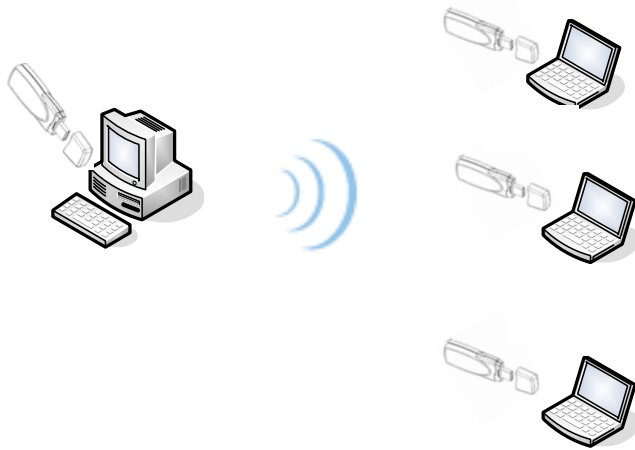
2. Check whether the IP address is 192.168.0.1, and the Subnet Mask is 255.255.255.0 (as shown above)

Computer 2:

1. IP address does not need to setup. The DEFAULT GATEWAY is 192.168.0.1.
2. Please follow the steps of “computer 1” to check whether the IP address is 192.168.0.1

❑ Application : Data sharing between computers

When user does not want to have Ethernet line or want to share resources (including data and printers), using WLAN is the lowest cost solution!



Setup Steps:

1. Check computer 1 & computer 2 already install 802.11g WLAN dongle.
2. In computer 1:
  - ✓ Double click the WLAN icon in Icon Tray, and enter into the “Software and Utility window”.
  - ✓ Under “Monitor window”, click “**Change**” to modify the Operation Mode to “Ad-hoc” mode.
  - ✓ Change the **SSID name** to “**Ad-Hoc**”, and then click “**Submit**” to save this change. After setting, this WLAN card could be the Gateway for other WLAN devices. Please reset the computer.
3. In computer 2:
  - ✓ Double click the WLAN icon in the Icon tray.
  - ✓ Under Site survey window, you will see all available connecting instruments. Double click the item with SSID named “Ad-Hoc”.
  - ✓ Rest computer 2.
4. After setting, computers are able to share data and resources with each other.

(Data sharing method please refer to related OS system operating manual)

PS: If you log in a Domain in computer 1, please DO NOT log in that Domain when using computer 2. However, if you need to use the resources in “computer 1” from “computer 2”, you need to know the password for log in that Domain in “computer 1”.