

# Tenda

## Installation Guide

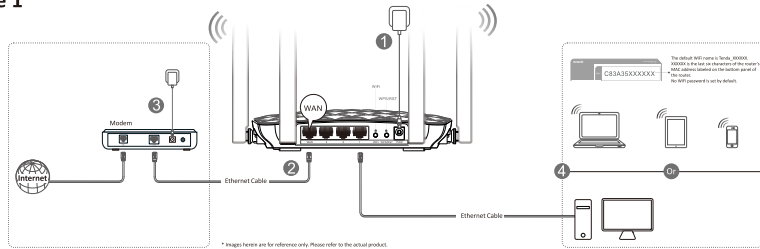
300Mbps Ultimate Coverage Wi-Fi Router  
Model: FW45

You can get the User Guide online at [www.tendacn.com](http://www.tendacn.com) for featured settings of the router.

### Package Contents

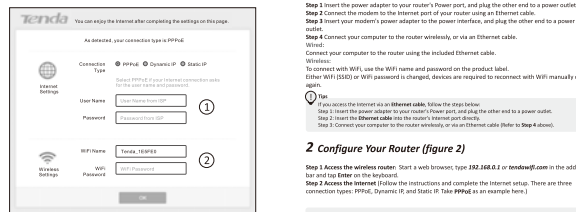
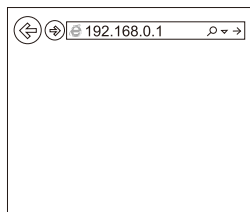
- Wireless Router\*1
  - Power Adapter\*1
  - Ethernet Cable\*1
  - Installation Guide\*1
- If any item is incorrect, missing or damaged, please keep the original package and contact your dealer.

Figure 1



\*Units here are for reference only. Please refer to the actual product.

Figure 2



## English

### 1 Connect Your Router (Figure 1)

- Insert the power adapter to your router's Power port, and plug the other end to a power outlet.
- Connect the modem to the Internet port of your router using an Ethernet cable.
- Insert your modem's power adapter to the power interface, and plug the other end to a power outlet.
- Connect your computer to the router wirelessly, or use an Ethernet cable.
- Connect your computer to the router using the included Ethernet cable.
- Connect your computer to the router using the included Ethernet cable.

**WiFi:** Connect your computer to the router using the included Ethernet cable.  
**Wired:** Connect your computer to the router using the included Ethernet cable.

**WiFi:** To connect with WiFi, use the SSID name and password on the product label. (Either WPA (PSK) or WPA2 password) are required to reconnect with WiFi manually once again.

**Tip:** If you access the router as an Internet user, follow the steps below:  
Step 1: Insert the power adapter to your router's Power port, and plug the other end to a power outlet.  
Step 2: Insert the Ethernet cable into the router's Internet port directly.  
Step 3: Connect your computer to the router wirelessly, or use an Ethernet cable (Refer to Step 4 above).

### 2 Configure Your Router (Figure 2)

- Access the wireless router. Start a web browser, type [192.168.0.1](http://192.168.0.1) or [tendaWi.com](http://tendaWi.com) in the address bar, and hit Enter on the keyboard.
- Access the Internet. Follow the instructions and complete the Internet setup. There are three connection types: PPPoE, Dynamic IP, and Static IP. The PPPoE is an example here.

① Open the user name and password from your Internet Service Provider. ② Customize your WiFi name and password. ③ Done & Exit!

Your router's LED indicators may differ. Please refer to the actual product.

LED Indicator	Status	Description
SYS	Blinking	The system is working fine.
	Off	There is no power supply, or the router malfunctions.
WiFi	Solid on	WiFi is enabled.
	Blinking	The Router is transmitting WiFi data.
LAN	Off	Wireless disabled.
	Solid on	The LAN port is well-connected.
1/2/3	Blinking	The LAN port is transmitting data.
	Off	No link is detected on the LAN port.
WAN	Solid on	The WAN port is well-connected.
	Blinking	The WAN port is transmitting data.
WAN	Off	No Ethernet cable is connected to the WAN port.
	Solid on	WPS is enabled, or a WPS connection is established.
WPS	Blinking	The Router is performing WPS registration to a client device, or transmitting data.
	Off	WPS is disabled.

Your router's buttons may differ. Please refer to the actual product.

Button	Description
WPS/RSI	Press and hold it for about 8 seconds and then release it, all LED indicators will light up once to reset the router to factory default settings.
WPS	Press and hold it for 1-3 seconds, and then release it to enable the WPS feature. Within 2 minutes, enable the wireless device's WPS feature to establish WPS connection.
WiFi	Press and then release it to enable/disable WiFi.

## FAQ

- Q1: I cannot log in to the web UI of the router. What should I do?**
- Verify that the Ethernet cable between your computer and the router is intact and connected properly.
  - Verify that you type the correct domain name ([tendaWi.com](http://tendaWi.com)) or login IP address (192.168.0.1) in the browser's address bar.
  - Use another computer, smartphone or PDA to log in.
  - Clear cache of your browser, or change another browser.
  - Press the RSI Button for about 8 seconds to reset the router to factory default settings, and then try to log in again.

### Q2: I cannot access to Internet, what should I do?

- A2: Use the following method to troubleshoot the fault.**
- Verify that the WAN port of the router is connected properly.
  - Verify that you select the correct connection type, and internet parameters you entered are correct.
  - Restart the router.
  - Reset the router to factory default settings and configure it again.
  - Contact your internet service provider for help.

## FC

**FC Statement**  
This equipment has been tested and found to comply with the limits for a Class B digital device, pursuant to part 15 of the FCC Rules. These limits are designed to provide reasonable protection against harmful interference to a residential installation. This equipment generates, uses and can radiate radio frequency energy and, if not installed and used in accordance with the instructions, may cause harmful interference to radio communications. However, there is no guarantee that interference will not occur in a particular installation. If this equipment does cause harmful interference to radio or television reception, which can be determined by turning the equipment off and on, the user is encouraged to try to correct the interference by one or more of the following measures:

- Reorient or relocate the receiving antenna.
- Increase the separation between the equipment and receiver.
- Connect the equipment into an outlet on a circuit different from that to which the receiver is connected.
- Consult the dealer or an experienced radio/TV technician for help.

— This device complies with Part 15 of the FCC Rules.  
Operation is subject to the following two conditions: (1) This device may not cause harmful interference, and (2) this device must accept any interference received, including interference that may cause undesired operation.

**Radiation Exposure Statement**  
This equipment should be installed and operated with minimum distance 20cm between the radiator & your body.  
**Caution:** Any changes or modifications not expressly approved by the party responsible for compliance could void the user's authority to operate this equipment.  
This equipment must not be co-located or operating in conjunction with any other antenna or transmitter.

**NOTE:** (1) The manufacturer is not responsible for any radio or TV interference caused by unauthorized modifications to this equipment. (2) To avoid unnecessary radiation interference, it is recommended to use a shielded RF cable.

## CE

**CE Mark Warning**  
This is a Class B product. In a domestic environment, this product may cause radio interference, in which case the user may be required to take additional measures.  
This equipment should be installed and operated with minimum distance 20cm between the radiator & your body.  
**NOTE:** (1) The manufacturer is not responsible for any radio or TV interference caused by unauthorized modifications to this equipment. (2) To avoid unnecessary radiation interference, it is recommended to use a shielded RF cable.

**Declaration of Conformity**  
HENRY SHENZHEN TENDA TECHNOLOGY CO., LTD. declares that the radio equipment type FW45 is in compliance with Directive 2014/53/EU.  
The full text of the EU declaration of conformity is available at the following internet address: <http://www.tendacn.com/declarationofconformity.html>  
Operator frequency: 2412-2472  
ERP Power (Max.): 100mW  
Software Version: V12.01.01.31

**Caution:**  
Adapter Model: EN043-AD500RE  
Manufacturer: SHENZHEN HENRY SHEN NETWORK TECHNOLOGY CO., LTD  
Input: 100-240V ac 50Hz/60Hz 0.3A  
Output: 5Vdc 1A  
Power: 5W  
DC Voltage

**RECYCLING**  
This product bears the selective sorting symbol for Waste electrical and electronic equipment (WEEE). This means that this product must be handled pursuant to European directive 2012/19/EU in order to be recycled or dismantled to minimize its impact on the environment. User has the choice to give this product to a competent recycling organization or to the retailer when he buys a new electrical or electronic equipment.

**ERC**  
LA EQUIPACION DE ESTE DISPOSITIVO ESTO SUJETA A LAS SIGUIENTES CONDICIONES:  
a) Es posible que este equipo o dispositivo no cause interferencia perjudicial.  
b) Este equipo o dispositivo debe aceptar cualquier tipo de interferencia, incluso la que pueda causar su operacion no deseada.  
c) Este equipo o dispositivo es un producto de conformidad a favor de siguiente manual para que contenga todas las funciones a caracteristicas.

**DECLARATION OF CONFORMITY**  
Product: Router Model: FW45  
Manufacturer: Shenzhen Tenda Technology Co., Ltd.  
Address: 6/F Floor, Tower E3, No. 12021, Zhongshanyuan Road, Nanshan District, Shenzhen, China 518022

**Technical Support**  
Shenzhen Tenda Technology Co., Ltd.  
6/F Floor, Tower E3, No. 12021, Zhongshanyuan Road, Nanshan District, Shenzhen, China 518022  
United States Hotline: 1-800-570-5882 Canada Hotline: 1-888-998-8966  
Hong Kong Hotline: 00852-82331518 Singapore: Tenda@tenda.com  
Website: <http://www.tendacn.com> E-mail: support@tendacn.com

**Copyright**  
© 2017 Shenzhen Tenda Technology Co., Ltd. All rights reserved.  
Tenda is a registered trademark legally held by Shenzhen Tenda Technology Co., Ltd. Other brand and product names mentioned herein are trademarks or registered trademarks of their respective holders. Specifications are subject to change without notice.