

CG-WLUSB2GS

802.11b/g Wireless  
USB Adapter



**corega**<sup>®</sup>

***User Manual***



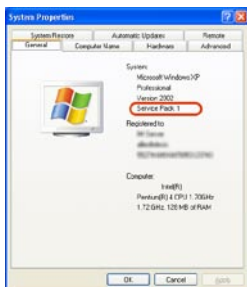
1.Preface.....	38
1.1 Features.....	38
1.2 Packing Content.....	38
1.3 Hardware description.....	39
1.4 Installation Steps.....	39
2.Software Installation.....	40
3.Driver Installation.....	44
《In Windows XPOS》.....	44
《In Windows 2000 OS》.....	47
4.Verify the Hardware Status.....	48
5. Setting Network Protocol.....	50
6. Wireless configuration.....	52
6.1 Connect to AP.....	52
6.2 If no available AP for connecting.....	54
7. Security Configuration.....	56
7.1 Setting ESSID and WEP.....	56
7.2 Setting WPA.....	57
[WPA-PSK].....	58
[WPA-Enterprise].....	58
8. Utility Introduction.....	60
8.1 Configuration.....	60
8.2 Status.....	61
8.3 Option.....	62
8.4 About.....	62
9. FAQ.....	63
10. Specification.....	65

# Before you start...

Before you install the driver, please confirm if your OS were Windows 2000 SP4 (service pack 4) or Windows XP SP2 (service pack 2); For product safety and performance concern, please upgrade your OS to above mentioned version, then start your installation.

If you can't make sure your OS version, please click [My computer] and right click the mouse, then select [Properties]. It will appear OS status screen. And you can find the version information on the circle area. (\*Empty area means you never upgrade your OS)

<Windows XP>



<Windows 2000>



## 1. If you use Windows 2000 (Service Pack 1~ Service Pack 3):

Please go to Microsoft website to upgrade to SP4 version:  
<http://www.microsoft.com/windows2000/downloads/service-packs/default.asp>

## 2. If you use Windows XP (Service Pack 1):

Please go to Microsoft Website to download "hotfix" program and install it:

<http://support.microsoft.com/?kbid=822603> (<http://support.microsoft.com/?kbid=822603>)

\*Note: "hotfix" will fix the USB 2.0 compatible issue.

corega WLUSB2GS is a Wireless USB Adapter which is suitable for all the laptop or desktop PCs with USB port. It supports Super G mode can speeds up to 108Mbps is faster than widely deployed IEEE 802.11b wireless networks found in homes, businesses, and public wireless hotspots around the world.

## 1.1 Features

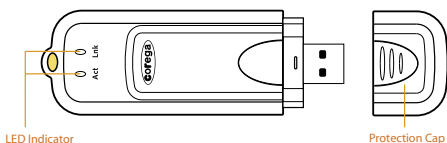
- Compatible with IEEE802.11b, IEEE802.11g
- High speed USB 2.0 interface
- Support Super G mode which speeds up to 108Mbps
- Supports both Infrastructure and Ad-hoc mode
- 64&128&152bit WEP, WPA encryption
- Shared broadband Internet access and resources
- Power Consumption
- Key Type design is easy for carrying.

## 1.2 Packing Content

Before installation, please make sure the packing content is completed. If something loss please contact your local distributor.

- Wireless 108M USB Adapter
- Driver CD
- User Manual

## 1.3 Hardware description



### 1. Link LED

On: device working

Off: device disable

### 2. Act LED

On (Blink): network connected

Off: network disconnected.

## 1.4 Installation Steps

Please confirm the following steps before installing the product.

Put on the Driver CD ➤ Install the software ➤ Restart the computer ➤ Plug the product into the USB port ➤ Installation the Driver ➤ Confirm the running situation of the product ➤ Set up TCP/IP ➤ Open the Utility Program ➤ Setting the Wireless Network ➤ Enable the security function ➤ Advanced setting ➤ Start to use the product.

## 2

# Software Installation

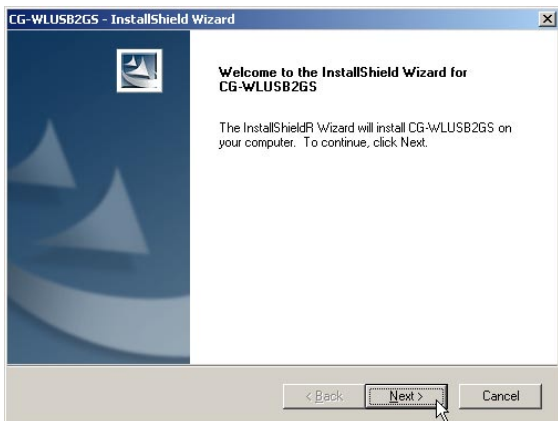
1. Please put Driver CD into CD-ROM.
2. Please select [English].



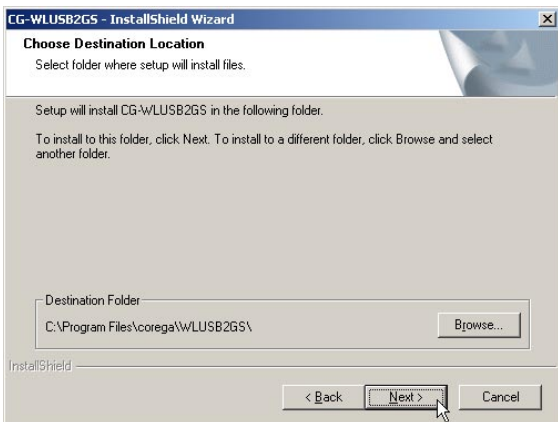
3. Please select [Install Software].



## 4. Click [Next].

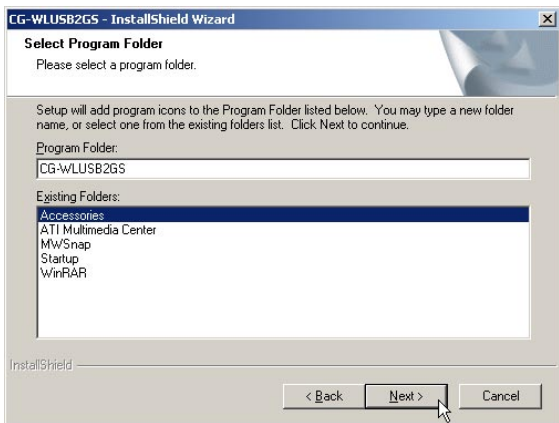


## 5. Please confirm the path, if no changes please click [Next].





## 6. Please click [Next].



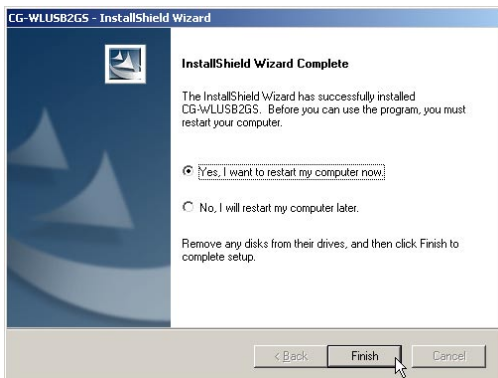
## 7. When it appears below screen, please click [Continue Anyway].



8. When it appears below screen on second time, please click [Continue Anyway].



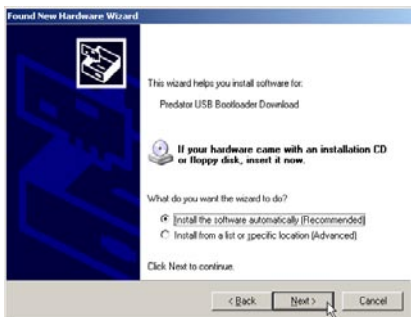
9. Finished, please choose [Yes, ]=>computer restart.  
(\*Note: Restarting computer is a necessary step to ensure the product be installing successful.)



Please plug corega WLUSB2GS into the USB port of the laptop or desktop PC.

## 《In Windows XP OS》

1. After restarting the computer, it will show up [Found New Hardware] screen, if not, please re-plug corega WLUSB2GS again.  
=> Please select [Install the software automatically (Recommended)]. => Click [Next].



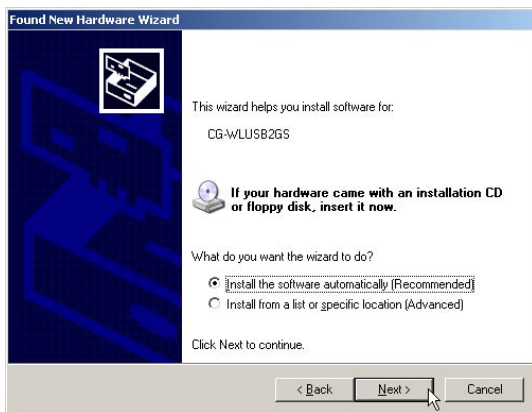
2. When it shows up below screen, please click [Continue Anyway].



3. Driver Part I process is completed, please click [Finish] to continue.



4. It will start to install the driver Part II, please select [Install the software automatically (Recommended)]. => Click [Next].



- When it shows up below screen, please click [Continue Anyway].



- Driver Installation is completed, please click [Finish] to finish.




## 《In Windows 2000 OS》

1. When it shows up below screen, please click [Continue Anyway].



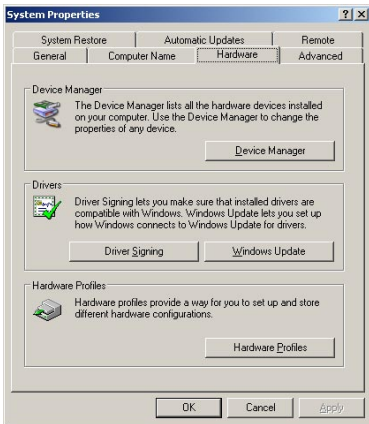
2. When it shows up below screen, please click [Yes] to continue.



3. Now driver installation is completed, and you will see  icon appears on system tray.

## Verify the Hardware Status

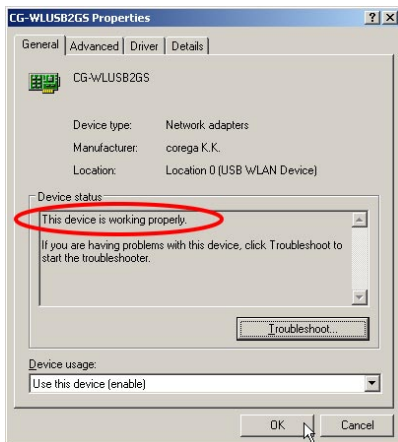
1. Open the Control Panel=>Double click [System].
2. Click [Device Manager] from [Hardware tab].  
(This screen is captured from Windows XP(SP2).)



3. Select and double click [CG-WLUSB2GS].



4. Verify the running status of the product is [This device is working properly]. => Click [OK] to close the screen.

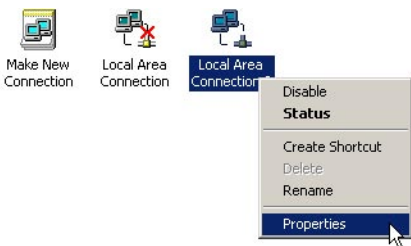




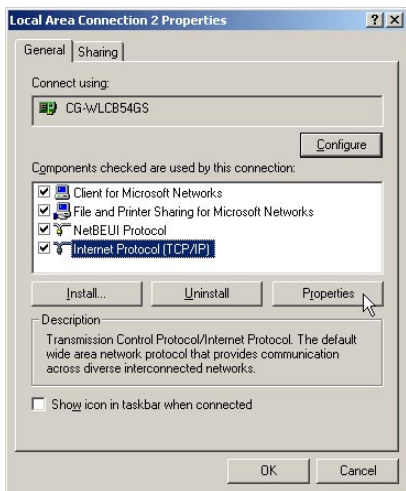
## 5

# Setting TCP/IP

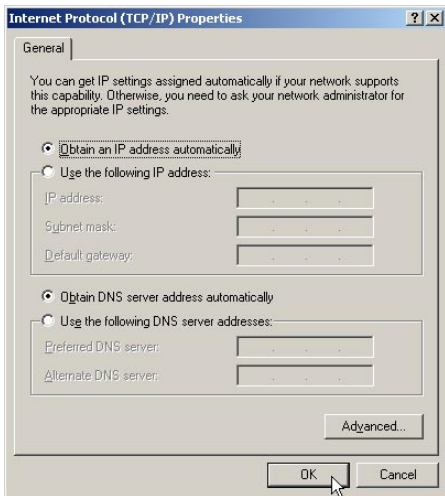
1. From the [Start Menu], select [Settings] => select [Control Panel]=>select [Network]=> press right button of the mouse, and select [properties].



2. In [General] tab, Please select [Internet Protocol (TCP/IP)] => click [Properties].





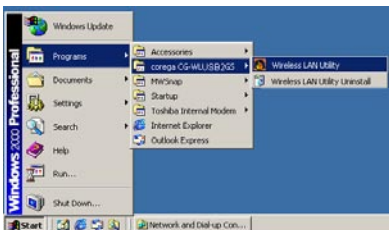
3. Please select [General] tab => select both [Obtain an IP address automatically] and [Obtain DNS server address automatically] (Recommended) => click [OK].



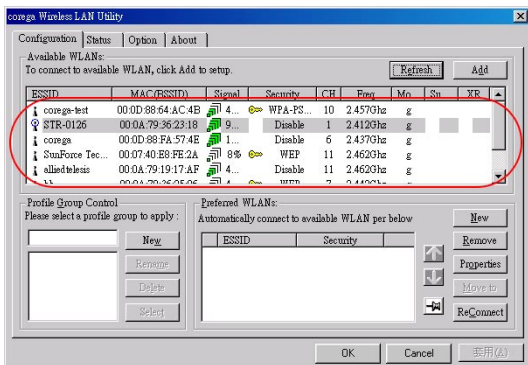
4. Return back to [Local Area Connection Properties] screen => click [OK] to close it.

## 6.1 Connect to AP

1. Double click  icon on system tray, and it will show up the utility screen. If there's no  icon appears on system tray, please press [Start] => [Programs]=>[corega CG-WLUSB2GS]=> [Wireless LAN Utility].



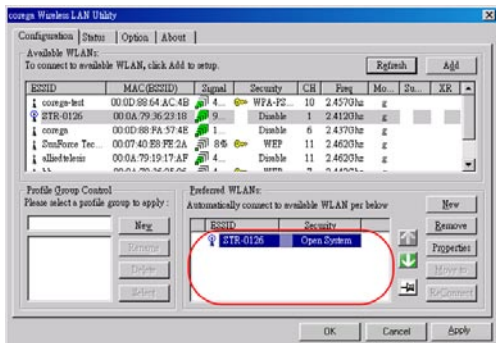
2. You will see available AP listing in [Available WLANs] from Configuration tab. If it displays nothing, please press [Refresh], else, please verify the AP setting.







3. Please select one of available APs in listing => then press [Add] button, or double click the selection, => it will show up [Wireless Network Properties] screen, if the selection has configured with WEP/WPA encryption, please make the same setting as the AP. => Press [OK].



4. Please press [Apply] to get ready to connect with the device(AP).

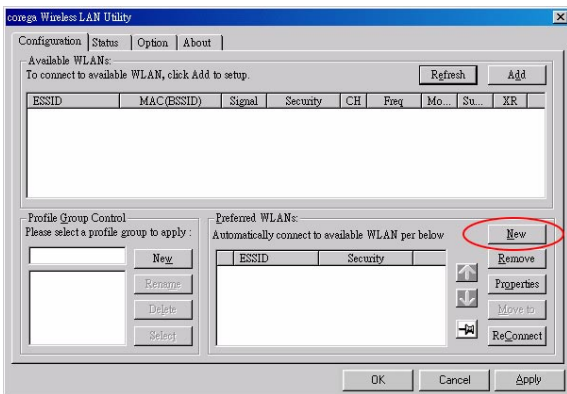


**\*Note:**

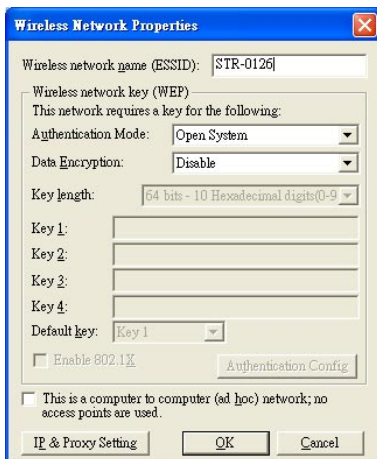
1. You will see a  icon on the left side of the device name when WLUSB2GS has connected with the device.
2. You may press   icons to change the ranking of [Preferred WLANs], and you may click  icon to fix one of them, => then press [Apply] to save the changes.
3. Please verify it can connect to internet successful or not.

**6.2 If no available AP for connecting..**

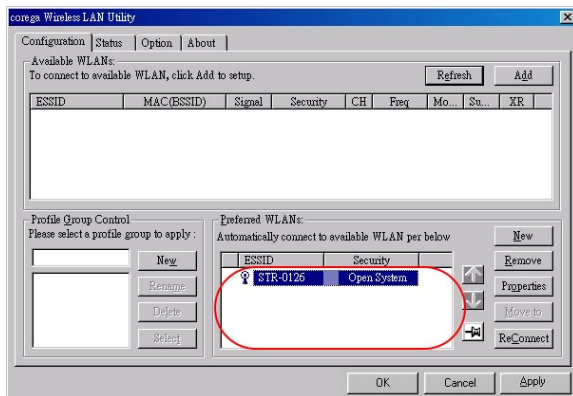
1. Click [Configuration] tab, => then press [New] button.





2. It will show up [Wireless Network Properties] screen, please make the same setting as the device (AP) which you will connect to => press [OK].



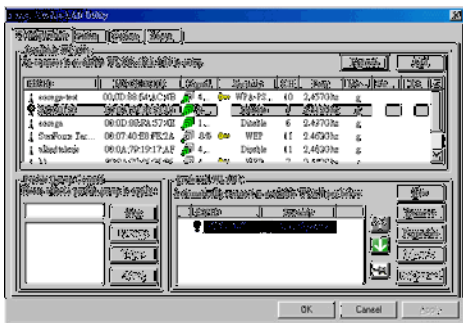
3. The device (AP) had added in the listing of [Preferred WLANs], =>press [Apply].



## 7.1 Setting ESSID and WEP

7.1.1 Double click  icon on system tray, and it will show up the Utility screen. If you can't see  icon on system tray, please press [Start] => [Programs]=>[corega CG-WLUSB2GS]=> [Wireless LAN Utility].

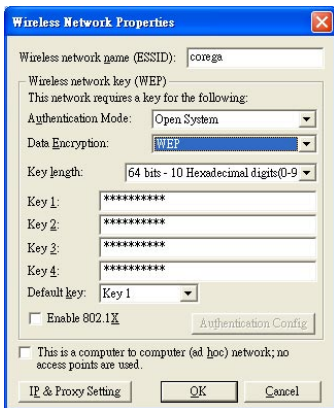
7.1.2 Select one of available devices in [Available WLANs].



7.1.3 Once shows up [Wireless Network Properties] screen, => filling with below items:

- [Authentication Mode]: Please select [Open System] (Recommended) or [Shared Key].
- [Data Encryption]: select [WEP].
- [Key length]: select [64/128/152 bits]
- [Key1]~[Key 4]: enter the same passwords as AP
- [Default Key]: select the default key. All devices in the same group should select the same key.

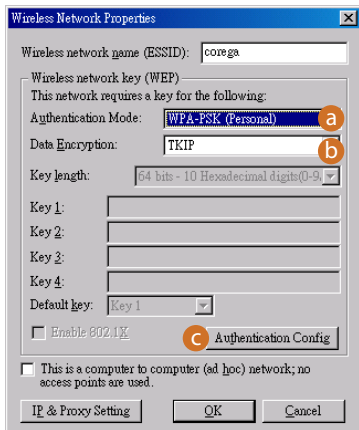
\* Note: please enter 10 characters for 64bits, 26 characters for 128bits, or 32 character for 152bits. (number 0~9, and letters a~f).



## 7.2 Setting WPA

7.2.1 Repeat 6.1.1~6.1.2

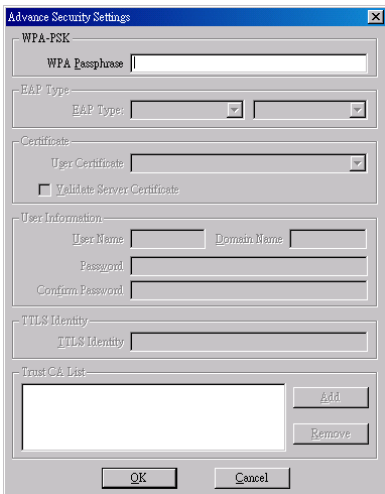
7.2.2 Shows up [Wireless Network Properties] screen.





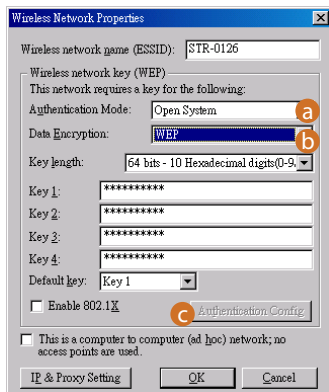
## [WPA-PSK]

- (a) [Authentication Mode]- select [WPA-PSK(Personal)].
- (b) [Data Encryption]-select [TKIP] or [AES].
- (c) Press [Authentication Config], it will shows following screen, please enter the password which you first get connected in [WPA Passphrase], and then press [OK] button.
- (d) When return back to [corega Wireless LAN Utility] screen, press [Apply] to save the changes.

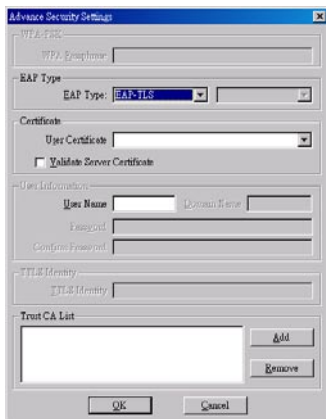


## [WPA-Enterprise]

- (a) Authentication Mode: select [WPA-EAP(Enterprise)].
- (b) Data Encryption: select [TKIP] or [AES].



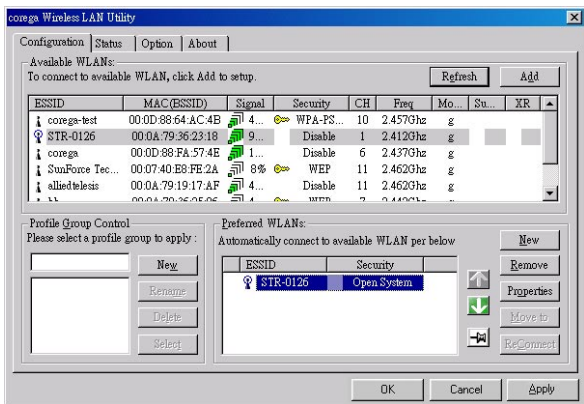
- (c) Press [Authentication Config] button, it will show up following screen, => select [EAP-TLS], => press [OK].



- (d) When return back to [corega Wireless LAN Utility] screen, press [Apply] to save the changes.

## 8.1 Configuration

This tab is for setting communication mode, ESSID, channel, and WEP encryption function.

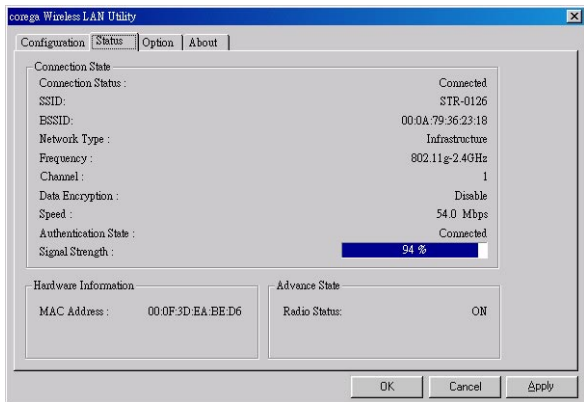


- (1) Refresh: rescan available wireless devices.
- (2) Add: press this button will add the device which has been selected from [Available WLANs] to [Preferred WLANs], and in the meanwhile it will show up the properties setting screen. After the setting, click [OK] will return to this screen.
- (3) Available WLANs: displays all available wireless devices.
- (4) Profile Group Control: this function set available APs in different groups.
- (5) Preferred WLANs: it displays all devices have been added for preference.

- (6) New: add a new available device in [Preferred WLANs].
- (7) Remove: select one of devices from [Preferred WLANs], => then press [remove], it will be removed.
- (8) Properties: select one of devices from [Preferred WLANs], => press this button, then it will show up a [Wireless Network Properties] screen for you to modify.
- (9) Move to: press this button will change the ranking of the preference.
- (10) ReConnect: press this button will re-connect the selection of the preference.

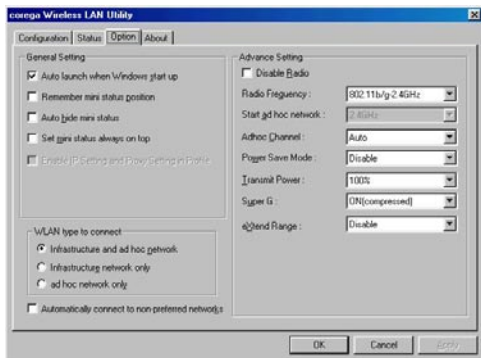
## 8.2 Status

Display all connection status and device information.



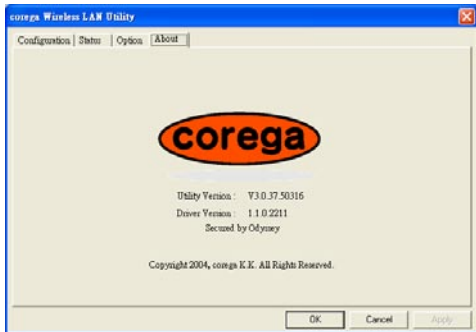
## 8.3 Option

This tab is for advanced setting.



## 8.4 About

“About” tab shows the copyright, utility and driver version information.



There are 2 ways for solving your problems if WLUSB2GS can't connect to internet as below:

- (1) First, please see following "FAQ" to check your problem.
- (2) Please go to <http://www.corega-asia.com>, then click "Supports" => select "Online Customer Support", => fill in the form, => click "submit". We'll reply you as soon as possible.

Q1. It can't connect to AP/router.

Ans: Please make sure and follow the process as below:

- Verify the install process is correct.
- Verify the driver is installed.
- Verify the networking setting is completed.
- Verify the security setting and ESSID are the same as AP/router.
- Verify AP device is compatible with WLUSB2GS.

Q2. I can't get on the internet with WLUSB2GS.

- Check the LED indicators on the modem/router/ap are indicating normal activity. If not, please check the power adapter and Ethernet cables are firmly connected, else, see the modem/router/ap's manual to solve the problem.
- Check the IP address, subnet mask, gateway, and DNS settings are correctly entered for the network.
- In Infrastructure mode, please make sure WLUSB2GS set the same ESSID and security setting as the ap/routers.
- In Ad-Hoc mode, both wireless clients will need to have the same SSID.

Q3. How to get latest driver?

A: Please go to <http://www.corega-asia.com>, then click

supports=>download =>select "driver", =>select and click the model which you want to upgrade.

Q4.Windows can't recognize WLUSB2GS.

Ans:

Please make sure that WLUSB2GS is inserted into the USB port of your notebook or PC properly.

Compliance Standard	IEEE802.11/IEEE802.11b/IEEE802.11g
LAN Interface	USB1.1/2.0
Protocol	CSMA/CA
Transmission Method	DS-SS, OFDM
Network Type	Infrastructure/802.11 Ad-Hoc
Frequency Band	2400 ~ 2483.5MHz ISM band
Channel	1~11 channels
Transmission Rate	IEEE802.11b: 11/5.5/2/1Mbps IEEE802.11g: 54/48/36/24/18/12/9/6Mbps
Transmitter Output Power	IEEE802.11b: Typical 16dBm IEEE802.11g: Typical 17dBm
Coverage Area	- IEEE802.11b: Indoors 100M, Outdoors 250M - IEEE802.11g(@54Mbps): Indoors 30M, Outdoors 40M * Environmental factors may adversely affect wireless signal range
Roaming	IEEE802.11, Support Automatic/Manual Rescan AP
Security	WEP(64/128/152bit), WPA-EAP, WPA-PSK
Antenna Type	Chip Antenna
Support OS	Windows 2000/XP(SP1, SP2)
Environmental Requirements	
Operating	Temperature: 0°C~40°C Humidity: <90% (non-condensing)
Storage	Temperature: -20°C~60°C Humidity: <95% (non-condensing)
Physical Specifications	
Dimension	28 (W) × 12.5(D) × 85(H) mm
Weight	40.3 g (main unit)
Certification	FCC, DGT



### **Federal Communication Commission Interference Statement**

This equipment has been tested and found to comply with the limits for a Class B digital device, pursuant to Part 15 of the FCC Rules. These limits are designed to provide reasonable protection against harmful interference in a residential installation. This equipment generates, uses and can radiate radio frequency energy and, if not installed and used in accordance with the instructions, may cause harmful interference to radio communications. However, there is no guarantee that interference will not occur in a particular installation. If this equipment does cause harmful interference to radio or television reception, which can be determined by turning the equipment off and on, the user is encouraged to try to correct the interference by one of the following measures:

- Reorient or relocate the receiving antenna.
- Increase the separation between the equipment and receiver.
- Connect the equipment into an outlet on a circuit different from that to which the receiver is connected.
- Consult the dealer or an experienced radio/TV technician for help.

This device complies with Part 15 of the FCC Rules. Operation is subject to the following two conditions: (1) This device may not cause harmful interference, and (2) this device must accept any interference received, including interference that may cause undesired operation.

FCC Caution: Any changes or modifications not expressly approved by the party responsible for compliance could void the user's authority to operate this equipment.

### **IMPORTANT NOTE:**

#### **FCC Radiation Exposure Statement:**

This equipment complies with FCC radiation exposure limits set forth for an uncontrolled environment. End users must follow the specific operating instructions for satisfying RF exposure compliance.

This transmitter must not be co-located or operating in conjunction with any other antenna or transmitter.

IEEE 802.11b or 802.11g operation of this product in the U.S.A. is firmware-limited to channels 1 through 11.

This equipment has been SAR-evaluated for use in laptops (notebooks) with side slot configuration.



[www.corega.com.tw](http://www.corega.com.tw)  
[www.corega-asia.com](http://www.corega-asia.com)

**corega Taiwan Inc.**

7F., No. 10, Lane 345, YangGuang St. Nei-Hu  
Chiu, Taipei City 114, Taiwan R.O.C.  
TEL: +886-2-8751-9164 FAX: +886-2-8751-9174

PN : T30-CM8012-00 Rev.A