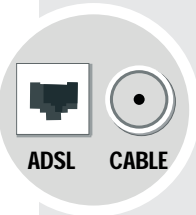


# Quick Installation Guide

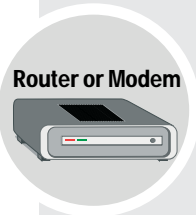
## 1. Before getting started...

### Required components

Before installing MR3201A, check that you have the correct components to join MR3201A.



**Broadband connection**  
(ADSL, cable, etc)

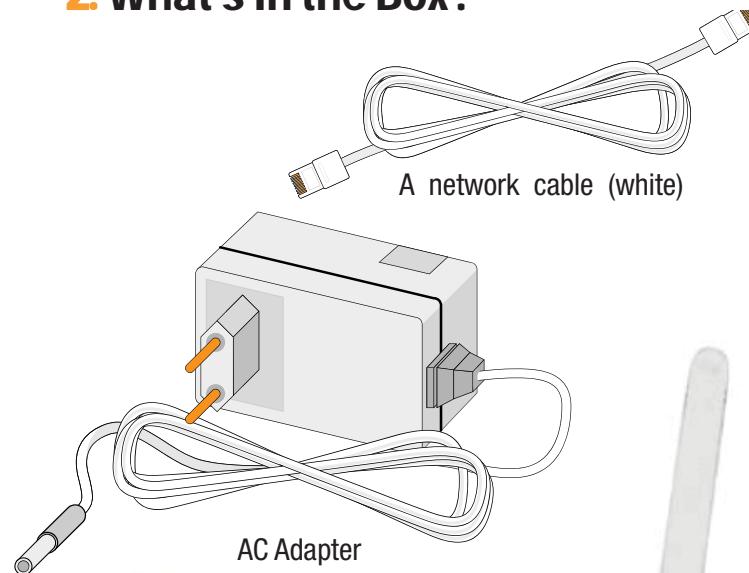


**ADSL Router or cable modem** from your Internet Service Provider



**Wireless device, either a laptop or another device with a wireless adapter**

## 2. What's in the Box?



### 3. Install MR3201A

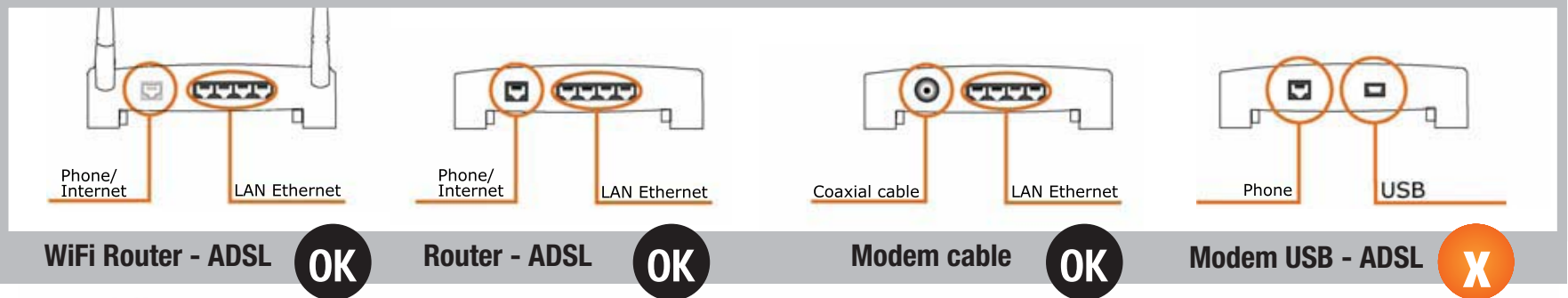
You don't need to make any changes in your current connection before installing MR3201A, but check that:

**OK** Compatible with MR3201A

**X** Not compatible with MR3201A

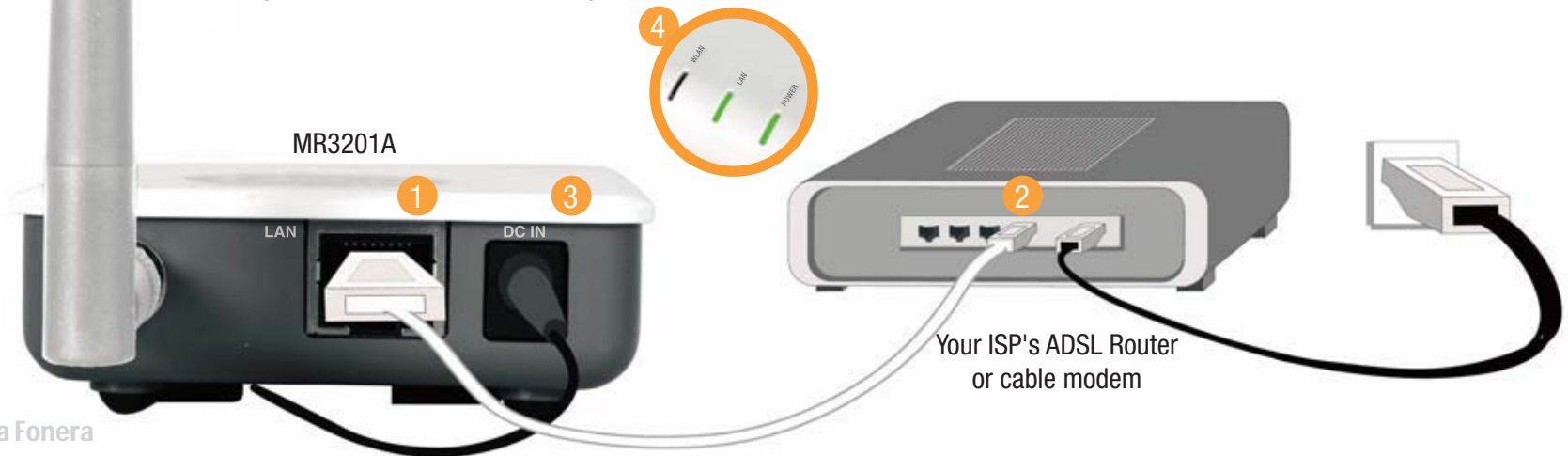
1. Your ISP's router or cable modem is compatible (see figures) and has an unused LAN Ethernet port.

2. Your ISP's router works properly and you can access Internet without problems.



### Connect MR3201A now

1. Connect one end of the white network cable to MR3201A's internet port.
2. Connect the other end of the network cable to one of your ISP router's LAN Ethernet ports.
3. Plug in MR3201A.
4. Check that MR3201A's Power and LAN lights are on.



## 4. Connect to MR3201A

Your device (laptop, desktop computer, etc.) must have a wireless network card to be able to find and connect to WiFi networks.

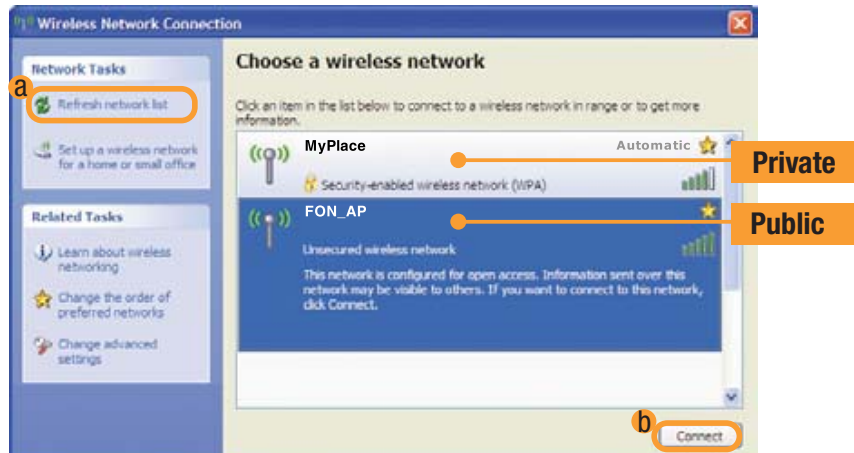
If your device isn't WiFi-ready, check the User Manual in the CD to configure MR3201A using a network cable.

### Register MR3201A

1. Find the "Wireless Network Connection" icon in your computer.  
In Windows XP, it is located in the task bar (see figure).  
For other operating systems, check the User Manual.



2. Right click with your mouse on this icon and select "View available wireless networks" and a window similar to this one will appear:



MR3201A sends out two WiFi signals: a public one (MR3201A\_AP) and a private one (MyPlace).

If you can't see signals, click on the "Refresh network list" button ( a ). ●

If the problem persists, check that you've installed MR3201A properly.

If you see MR3201A private signal but do not find the public signal, check the User Manual, since you will need to make some network configuration adjustments in MR3201A.

3. MR3201A needs to be registered through public signal. Select the "AP" signal and click on the "Connect" button ( b ). ●  
A few seconds later you'll see a message informing that you're connected to the "AP" signal.



4. Open your browser (Internet Explorer, Firefox...) and you'll see Access Portal.

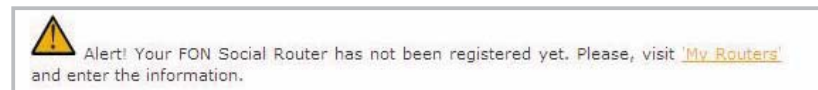
5. To access your **User Zone**, log in with the email and password you used to register in the MR3201A Community.



We'll show you a specific form for you to register your access point in the MR3201A Community.



If you don't register it, we'll show you a reminder alert in the User Zone like the one in the figure.



## **FCC Regulations:**

●This device complies with part 15 of the FCC Rules. Operation is subject to the following two conditions: (1) This device may not cause harmful interference, and (2) this device must accept any interference received, including interference that may cause undesired operation.

●This device has been tested and found to comply with the limits for a Class B digital device, pursuant to Part 15 of the FCC Rules. These limits are designed to provide reasonable protection against harmful interference in a residential installation. This equipment generates, uses and can radiated radio frequency energy and, if not installed and used in accordance with the instructions, may cause harmful interference to radio communications. However, there is no guarantee that interference will not occur in a particular installation. If this equipment does cause harmful interference to radio or television reception, which can be determined by turning the equipment off and on, the user is encouraged to try to correct the interference by one or more of the following measures:

- Reorient or relocate the receiving antenna.
- Increase the separation between the equipment and receiver.
- Connect the equipment into an outlet on a circuit different from that to which the receiver is connected.
- Consult the dealer or an experienced radio/TV technician for help.

Changes or modifications not expressly approved by the party responsible for compliance could void the user's authority to operate the equipment.

●This device complies with FCC radiation exposure limits set forth for an uncontrolled environment. In order to avoid the possibility of exceeding the FCC radio frequency exposure limits, human proximity to the antenna shall not be less than 20cm (8 inches) during normal operation.

●The antenna(s) used for this transmitter must not be co-located or operating in conjunction with any other antenna or transmitter.