

Wireless LAN WL-850FJB 802.11g

User's Manual

Version 1.0

Copyright statement

No part of this publication may be reproduced, stored in a retrieval system, or transmitted in any form or by any means, whether electronic, mechanical, photocopying, recording, or otherwise without the prior writing of the publisher.

April 2004

Contents

1. Introduction	3
2. Wireless LAN WL-850FJB Basics	4
3. Installation for Windows platform	5
3.1. <i>Installation Overview</i>	6
3.2. <i>Install Procedure for Windows XP</i>	7
3.3. <i>Install Procedure for Windows 98/ME/2000</i>	9
4. Configuration Utility	17
4.1 <i>Link Information</i>	錯誤! 尚未定義書籤。
5. Certification	20

1. Introduction

Thank you for purchasing your Wireless LAN WL-850FJB 802.11g Adapter. This Quick Installation Guide will assist you with the installation procedure.

The package you have received should contain the following items:

- Wireless LAN WL-850FJB 802.11g Adapter
- Quick Installation Guide
- CD containing Wireless LAN WL-850FJB Management utility, drivers and Multi-lingual User's Guide

Note: if anything is missing, please contact your vendor

The CD contains drivers and Configuration Utility program that is used for managing the Wireless LAN WL-850FJB Adapters and establishing the wireless connection with your Local Area Network.

Note: This manual is valid for all Wireless LAN WL-850FJB 11g Series products, such as PC Card, USB, mini-USB, PCI adapter, mini-PCI...etc.

2. Wireless LAN WL-850FJB Basics

Wireless LAN WL-850FJB (Local Area Networks) systems offer a great number of advantages over a traditional, wired system. Wireless LAN WL-850FJBs (WLAN WL-850FJBs) are more flexible, easier to setup and manage and often more cost effective than their wired equivalence.

Using radio frequency (RF) technology, WLAN WL-850FJBs transmit and receive data over the air, minimizing the need for wired connections. Thus, WLAN WL-850FJBs combine data connectivity with user mobility, and, through simplified configuration, enable movable LAN WL-850FJBs.

With wireless LAN WL-850FJBs, users can access shared information without looking for a place to plug in and network managers can set up or augment networks without installing or moving wires. Wireless LAN WL-850FJBs offer the following productivity, convenience and cost advantages over traditional wired networks:

- **Mobility** - Wireless LAN WL-850FJB systems can provide LAN WL-850FJB users with access to real-time information anywhere in their organization. This mobility supports productivity and service opportunities not possible with wired networks.
- **Installation Speed and Simplicity** - Installing a wireless LAN WL-850FJB system can be fast and easy and can eliminate the need to pull cable through walls and ceilings.
- **Installation Flexibility** - Wireless technology allows the network to go where wires cannot go.
- **Reduced Cost-of-Ownership** - While the initial investment required for wireless LAN WL-850FJB hardware might be higher than the cost of wired LAN WL-850FJB hardware, overall installation expenses and life-cycle costs will be significantly lower. Long-term cost benefits are greatest in dynamic environments requiring frequent moves, adds, and changes.
- **Scalability** - Wireless LAN WL-850FJB systems can be configured in a variety of topologies to meet the needs of specific applications and installations. Configurations are easily changed and range from peer-to-peer to full infrastructure networks, also allow roaming over a broad area.

3. Installation for Windows platform

The following section will assist you in installing wireless LAN WL-850FJB Adapter successfully. You will first install software (Utility) and then insert / attach the Wireless LAN WL-850FJB Adapter to your system, and finally set the network properties to accommodate resource sharing and select the type of wireless network that you wish to install. The Wireless LAN WL-850FJB card can easily be installed and used, without bothering to connect cables for keeping your computer to use network resources.

3.1. Installation Overview

Here are some steps you will perform in establishing your wireless network connection:

- Install the Access Point at first. AP is needed in case of Infrastructure network mode.
- Install the software using the Install CD.
- Install the Wireless LAN WL-850FJB Card (WIRELESS LAN WL-850FJB 802.11g Adapter).
- Install the network protocol(s) required to communicate on your network. Most likely you will need the TCP/IP protocol.

3.2. Install Procedure for Windows XP

Important Notice

In order to make right use of WPA, please ensure that your current Wireless Adapter's driver, and Wireless Utility can support it, WPA needs 802.1x authentication (when RADIUS mode is chosen), though the Operating System must also support 802.1x protocol. For Microsoft's OS family, only Windows XP has incorporated this by default. The rest of the OS must installed 3er party's client software such as Funk ODySSey.

Note: Do not insert the **WLAN WL-850FJB Adapter** until you are asked to do so, failure of which may result in unsuccessful installation of your **WLAN WL-850FJB device**.

1. Insert the given Installation CD in the CD-ROM and then click on the **Install Config Utilities**.

Follow the instruction to finish the installation.

Insert your WLAN WL-850FJB card into PCMCIA/PCI slot or USB connector of your system, and then system will detect new hardware.

Select "**Install the software automatically (Recommended)**", and then click **Next** to continue.

Once your system detected the driver, Microsoft will show a warning message as below.

Click “ **Continue Anyway** ” for next step.

After copy the file to your system, then the setup is finish.

3.3. Install Procedure for Windows 98/ME/2000

Note: Do not insert the **WLAN WL-850FJB Adapter** until you are asked to do so, failure of which may result in unsuccessful installation of your WLAN WL-850FJB **device**.

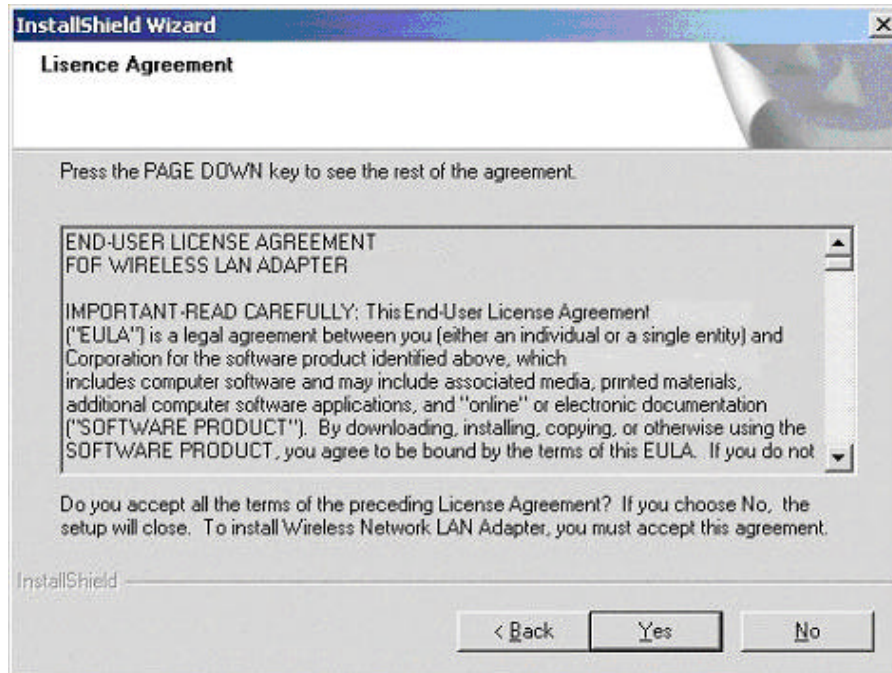
Please follow the following steps one by one in order to install the WLAN WL-850FJB Adapter successfully.

1. Power on your computer and allow Windows 98/ME/2000 to load fully.
2. Be sure that the Wireless LAN WL-850FJB 802.11g Adapter is not inserted yet.
3. Insert the given Installation CD in the CD-ROM and then click on the **Install Config Utilities**.

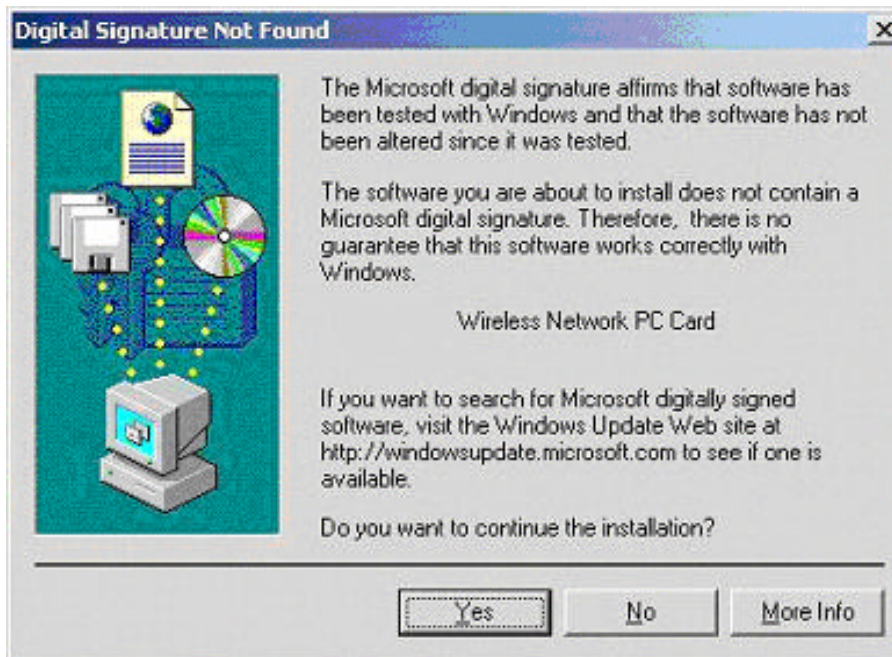


At the “ Welcome” window, click **Next**.

4. Accept the license agreement.



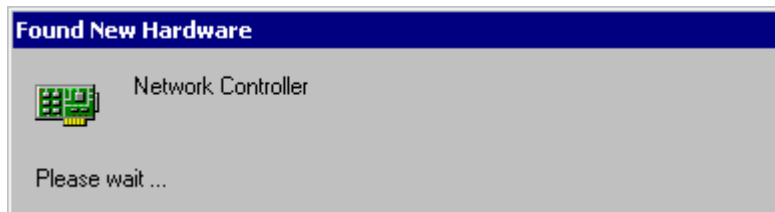
Accept the license agreement. Click **Yes** to accept.



Click **Yes** to finish the setup.

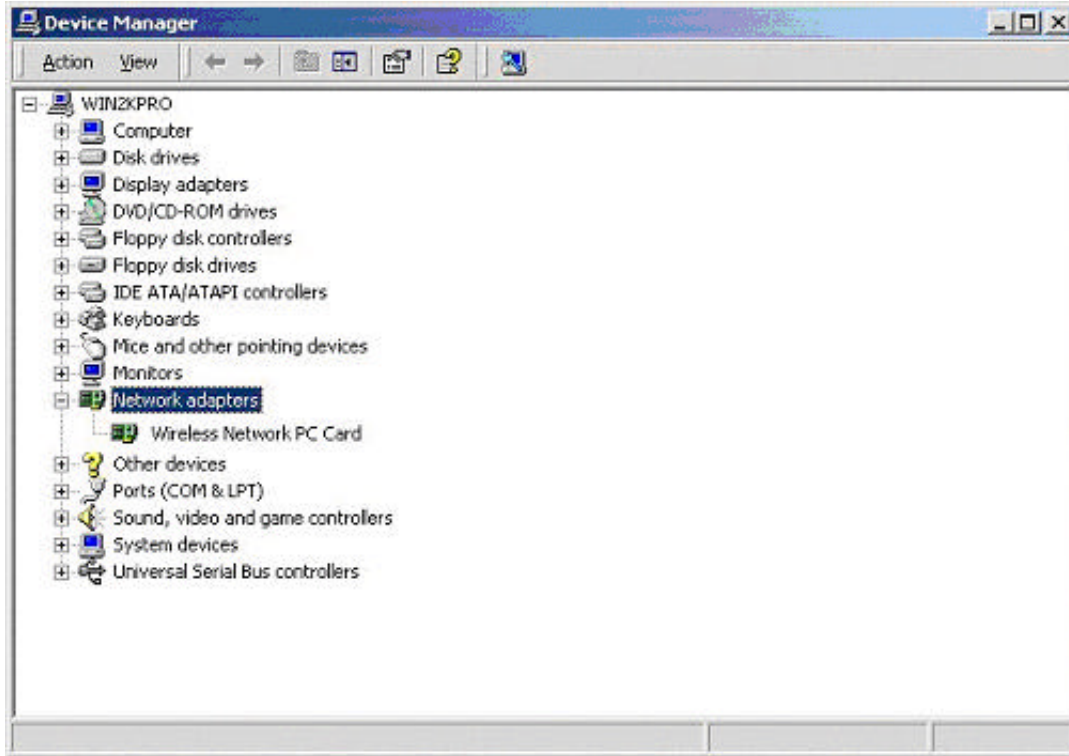
5. Insert / attach **Wireless LAN WL-850FJB 802.11g Adapter** to your system

Windows will recognize the WLAN WL-850FJB adapter and auto detect the driver, if the system did not find the driver automatically, please install the driver manually.



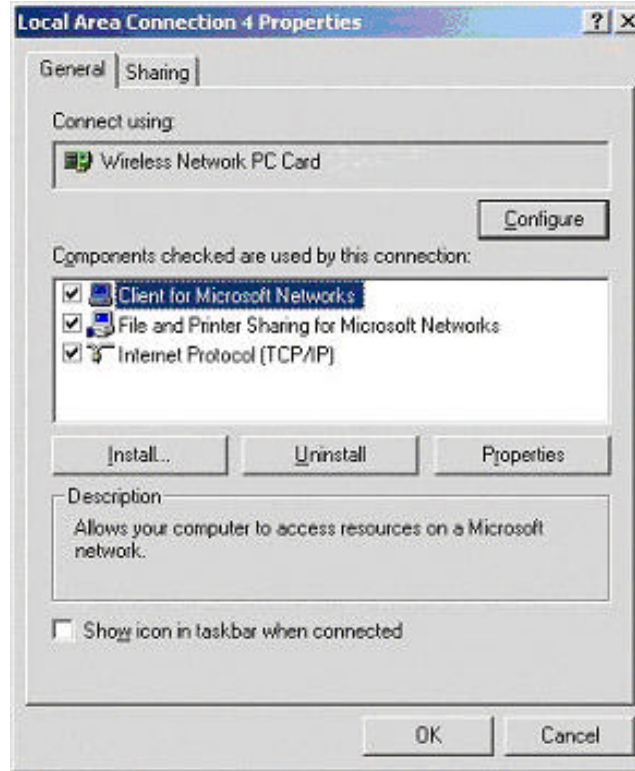
Click **Yes** to finish the installation.

3. Click the right button of mouse on **My Computer** → **Properties** → **Hardware**→**Device Manager**. Check whether it has WLAN WL-850FJB adapter in one of the sockets or not. If you find **Wireless Network PC Card** in one of the sockets, it means the card is detected properly.

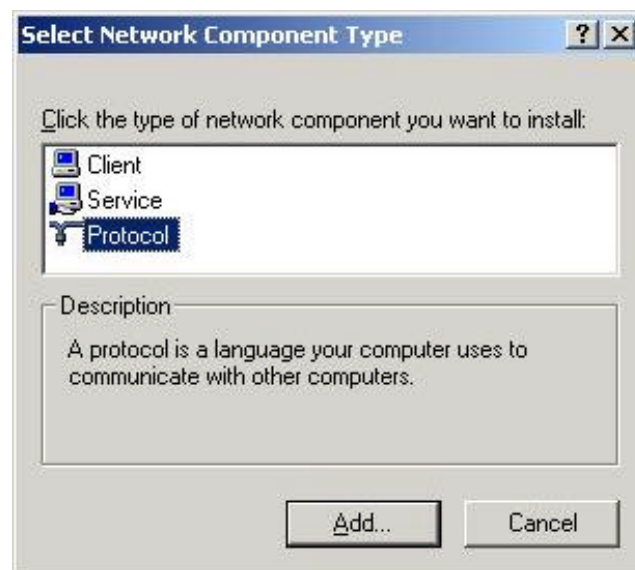


7. Click right button of mouse on the **Network Neighborhood**.

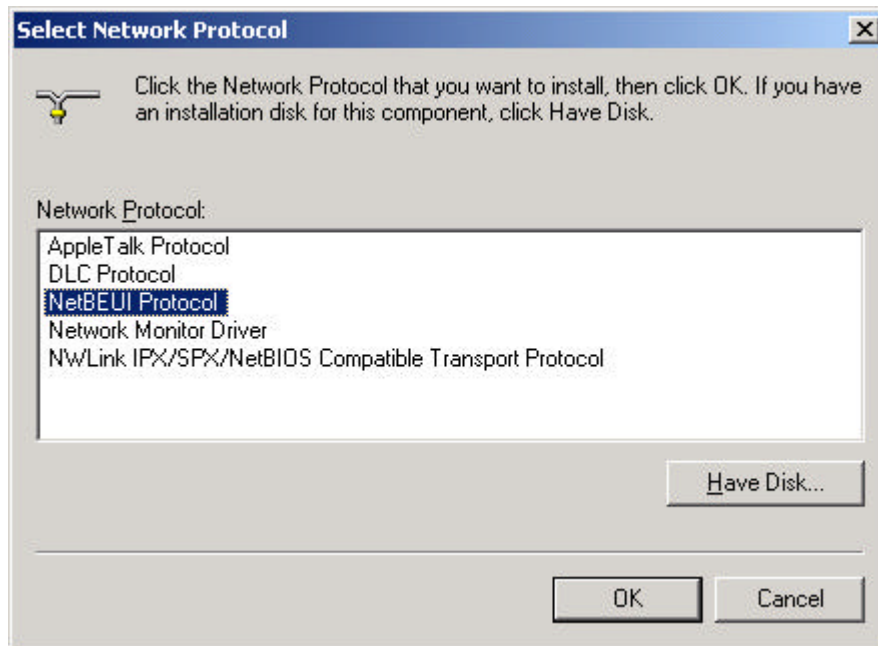
3. Select **Properties** from the pop up menu. For Windows 98 the network's properties box appears.
- * For Windows ME and 2000, please select the Local Area Connection's properties to check the following menu.



4. Click on the **General** tab and then click on the **Install** button. Select Network Component Type box appears. Click on the **Protocol** then click the **Add** button.

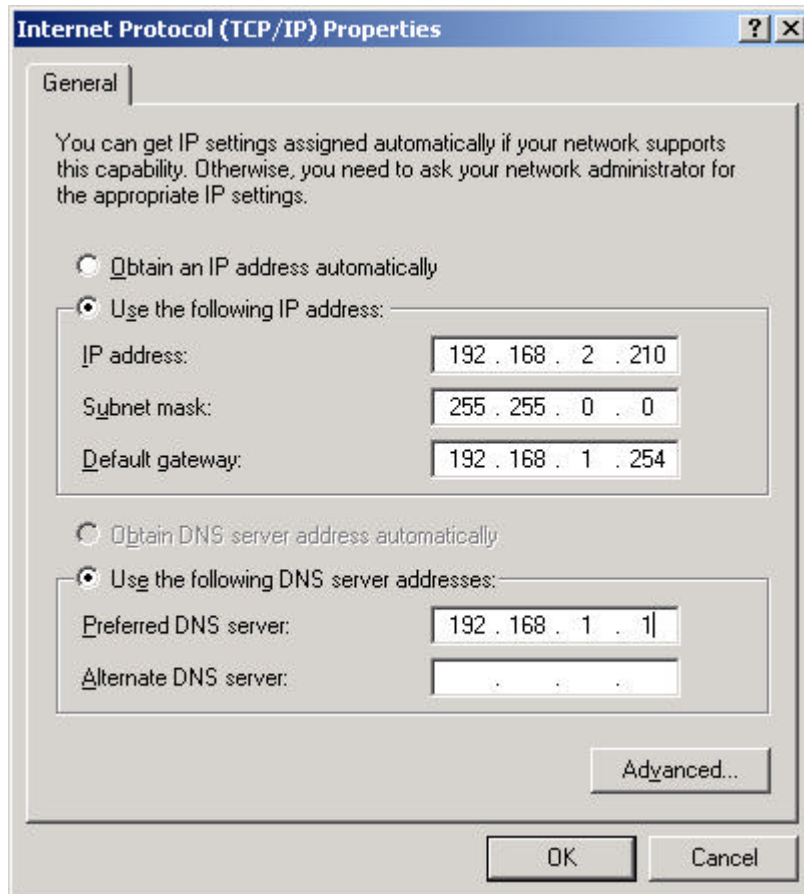


10. Select Network Protocols box appears. From the list of network protocols list, select **NetBEUI**, then click **OK**.



11. The **NetBEUI** protocol is now installed. After clicking on **OK** return back to Network Component Type box.
12. Repeat the step 9 and 10 to add IPX/SPX protocol.

13. Click on the **TCP/IP** option for setting the **IP** address for your computer. You can select either **Obtain an IP address automatically** or **Use the following IP address** setting. If your choice is the second one then enter the **IP** value, **Subnet** masking, **DNS**, **Domain/ Workgroup** name, and **Gateway** Address values. After setting these parameters appropriately, click **OK** to return to Network Component Type and you can select the **File and Printer Sharing** options as well for sharing your computers resources. Click on **OK**.



14. Screen message **do want to restart your Computer** will pop up. Select **Yes**. It will shut down your computer and restart.

Important: In order to make sure that the changed values could take effect, please **Restart your computer before continue**.

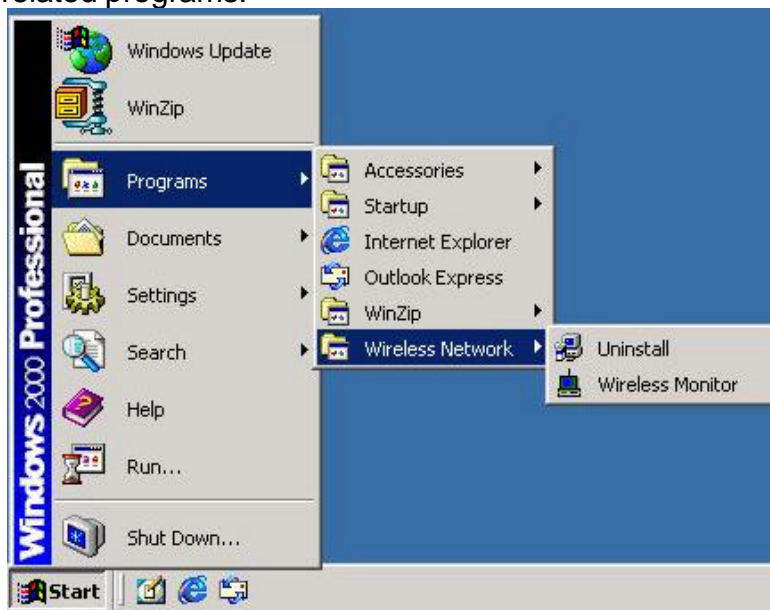
Uninstall Procedure

Step 1:

If you want to uninstall the WLAN WL-850FJB adapter, just simply click

Start Menu → Program → Wireless Network → Uninstall,

it shall uninstall all related programs.



Step 2:

Restart your Computer.

4. Configuration Utility

Wireless LAN WL-850FJB 802.11g Wireless LAN WL-850FJB adapter uses its own management software. All functions controlled by user are provided by this application. Usually this application starts automatically,

or click  icon from Start Menu to start the Utility application.


A new icon -  should appear in your Icon tray. If the icon is in red, it means that Wireless LAN WL-850FJB 802.11g NIC configuration is invalid or incomplete. Sometimes icon can be colored in yellow. This may happen when communication is defined poor connection or incorrectly.

Figure 1 Icon tray with a new icon



4. 1 Link Information

This field is used to display the current status of connection. When the state shows “Connected to Network“ means normal flow of operation in Infrastructure mode. The PC is connected to access point. Networking is available.

A state of “Scanning” means that the node is searching for available access point and detecting the SSID for an available access point within range.

This field will also display an error message for some reason if the driver fails to initialize.

Network Type

Infrastructure Mode - The driver will scan all available channels continuously until it finds one or more Access Points that match its SSID. At that point it will try and authenticate and associate with the Access Point.

Peer to Peer Mode - The driver will scan for 5 seconds looking for an existing Ad Hoc network using the same SSID.

- **Current Channel and Transmit Rate**

Shows the channel of the radio and transmit rate being currently used for an active connection.

This value has no meaning when the radio is “Scanning”

- **Link Quality**

The Link Quality bar graph is only active when the node is in Infrastructure Mode. The bar graph displays the quality of the link between the node and Access Point.

- **Signal Strength**

The Signal Strength bar graph is only active when the node is in Infrastructure Mode. The bar graph displays normalized signal strength as reported by the radio, averaged over all frames over 100 bytes long that are received from the Access Point.

5. Certification

IC Statement

The device is certified to the requirements of RSS-210 for 2.4 GHz spread spectrum devices. To prevent radio interference to the licensed service, this device is intended to be operated indoors and away from windows to provide maximum shielding.

Operation is subject to the following two conditions:

- 1) This device may not cause interference and
- 2) This device must accept any interference, including interference that may cause undesired operation of the device

Federal Communication Commission Interference Statement

This equipment has been tested and found to comply with the limits for a Class B digital device, pursuant to Part 15 of the FCC Rules. These limits are designed to provide reasonable protection against harmful interference in a residential installation. This equipment generates, uses and can radiate radio frequency energy and, if not installed and used in accordance with the instructions, may cause harmful interference to radio communications. However, there is no guarantee that interference will not occur in a particular installation. If this equipment does cause harmful interference to radio or television reception, which can be determined by turning the equipment off and on, the user is encouraged to try to correct the interference by one of the following measures:

- Reorient or relocate the receiving antenna.
- Increase the separation between the equipment and receiver.
- Connect the equipment into an outlet on a circuit different from that to which the receiver is connected.
- Consult the dealer or an experienced radio/TV technician for help.

This device complies with Part 15 of the FCC Rules. Operation is subject to the following two conditions:

(1) This device may not cause harmful interference, and (2) this device must accept any interference received, including interference that may cause undesired operation.

FCC Caution: Any changes or modifications not expressly approved by the party responsible for compliance could void the user's authority to operate this equipment.

IMPORTANT NOTE:

FCC Radiation Exposure Statement:

This equipment complies with

FCC radiation exposure limits set forth for an uncontrolled environment. This equipment should be installed and operated with minimum distance 20cm between the radiator & your body.

This transmitter must not be co-located or operating in conjunction with any other antenna or transmitter.

This device is intended only for OEM integrators under the following conditions:

- 1) The antenna must be installed such that 20 cm is maintained between the antenna and users, and
- 2) The transmitter module may not be co-located with any other transmitter or antenna.

As long as 2 conditions above are met, further transmitter test will not be required. However, the OEM integrator is still responsible for testing their end-product for any additional compliance requirements required with this module installed (for example, digital device emissions, PC peripheral requirements, etc.).

IMPORTANT NOTE: In the event that these conditions can not be met (for example certain laptop configurations or co-location with another transmitter), then the FCC authorization is no longer considered valid and the FCC ID can not be used on the final product. In these circumstances, the OEM integrator will be responsible for re-evaluating the end product (including the transmitter) and obtaining a separate FCC authorization.

ViewSonic declares that WL-850FJB (FCC ID: GSS-WL850FJB) is limited in CH1~CH11 for 2.4 GHz by specified firmware controlled in U.S.A.

End Product Labeling

This transmitter module is authorized only for use in device where the antenna may be installed such that 20 cm may be maintained between the antenna and users (for example: Digital Media Adapter, Router, AP...etc.). The final end product must be labeled in a visible area with the following: "Contains TX FCC ID: GSS-WL850FJB".

Manual Information That Must be Included

The OEM integrator has to be aware not to provide information to the end user regarding how to install or remove this RF module in the users manual of the end product which integrate this module.

The users manual for OEM integrators must include the following information in a prominent location “ IMPORTANT NOTE: To comply with FCC RF exposure compliance requirements, the antenna used for this transmitter must be installed to provide a separation distance of at least 20 cm from all persons and must not be co-located or operating in conjunction with any other antenna or transmitter.