



GN-WI30N-RH

AirCruiser N300 Mini-PCI Adapter

User's Manual

<http://www.gigabyte.com.tw>

Revised 1.0-1st
Version

Administrative Regulations on Low Power Radio Waves Radiated Devices

Article 14

Without permission granted, the frequency change, transmitting power enhance or alter of original design characteristic as well as function by companies, enterprises, or users for approved Low-power radio frequency devices is not allowed.

Article 17

Low-power radio-frequency devices shall not influence aircraft security and interfere legal communications; If found, shall cease operating immediately until no interference is achieved.

Article 20

A company, enterprise, or user importing, manufacturing low-power radio-frequency devices will be punished for violation of regulation hereunder, authorized frequency usage or change and power change in accordance with Telecommunications Act. Furthermore, Directorate General of Telecommunication can cancel its model certificate or recognition label.

Above mentioned Legal Communications is defined as radio communications operation complying to Telecommunications Act.

Low-power radio-frequency devices must susceptible with the interference from legal communications, ISM radio wave radiated devices.

Content

CHAPTER 1	PRODUCT OVERVIEW	1
1-1.	INTRODUCTION.....	1
1-2.	FEATURES	1
1-3.	PHYSICAL DIMENSIONS/PACKAGING.....	1
1-4.	LED INDICATOR	2
1-5.	SYSTEM REQUIREMENTS	2
CHAPTER 2	INSTALLING THE WLAN CARD	3
2-1.	INSTALLING THE WLAN CARD (HARDWARE INSTALLATION).....	3
2-2.	INSTALLING THE DRIVER & UTILITY (WIN 98SE)	4
2-3.	INSTALLING THE DRIVER & UTILITY (WIN ME).....	8
2-4.	INSTALLING THE DRIVER & UTILITY (WIN2000).....	12
2-5.	INSTALLING THE DRIVER & UTILITY (WIN XP)	17
CHAPTER 3	USING THE UTILITY	21
3-1.	“PROFILE” SETTING	21
3-2.	“LINK STATUS” SETTING	28
3-3.	“SITE SURVEY”	29
3-4.	“STATISTICS” SETTING.....	30
3-5.	“ADVANCE” SETTING	31
3-6.	“ABOUT” SETTING	32
CHAPTER 4	TROUBLESHOOTING.....	33
	“802.1X”, “WPA” AND “WPA-PSK” CAN NOT WORK.....	33
	CANNOT CONNECT TO AN AP.....	33
	CAN CONNECT TO AN AP BUT CANNOT CONNECT TO THE INTERNET	33
	POOR LINK QUALITY AND SIGNAL STRENGTH.....	33
CHAPTER 5	SPECIFICATION.....	34

Chapter 1 Product Overview

1-1.Introduction

This 802.11b/g Wireless Local Area Network (WLAN) card is composed of Media Access Controller (MAC), baseband, radio components, MINI-PCI interface, and one external antenna. It operates within the 2.4GHz spectrum, providing high speed (up to 54Mbps) and secure (supporting AES, 802.1x & WEP and WPA) WLAN connections.

1-2.Features

- Conforms to 802.11b/802.11g specification
- Transmits data rate up to the maximum speed of 54 Mbps
- Dynamically scales the data rate.
- External antenna.
- Seamless roaming between WLAN.
- Supports AES (Advance Encryption System), enterprise-class 802.1x security and multiple-levels WEP encryption (64-bit /128-bit/), and WPA (Wi-Fi Protected Access)
- Drivers support Windows 98SE/Me/2000/XP.

1-3.Physical Dimensions/Packaging

Dimensions: 134mm × 121mm × 22mm

Before the installation procedures, please ensure the components are not damaged during the shipping. The components include:

GN-WI30N-RH WLAN card×1

External antenna×1



Installation CD (including User's Manual and driver)×1

User's Manual×1

In case of any missing or damaged accessories, please contact your local distributor or authorized reseller immediately. If you require returning the damaged product, you must pack it in the original packing material or the warranty will be voided.

1-4.LED Indicator

ACT	OFF	ON	ON
LINK	OFF	ON	BLINK
Meaning	Network card is not functioning	Network card is connecting to network	Network card is sending/receiving data.

LED		
Condition of the Receiver	ACT	LINK

1-5.System Requirements

1-5-1. Supported Platform:

IBM PC/AT compatible computer

1-5-2. Supported Operation System:

Windows 98SE/Me/2000/XP

Chapter 2 Installing the WLAN Card

The following sections will assist you to install this WLAN card. 2-1: Hardware Installation, 2-2~2-5: Software Installation, which provides users more convenient installation methods and automatically installs drivers and utilities. Please refer to different section (2-2: Windows 98SE, 2-3: Windows ME, 2-4: Windows 2000, and 2-5: Windows XP) for software installation in accordance with your operation system.

2-1. Installing the WLAN Card (Hardware Installation)

Step 1: Power off you PC.

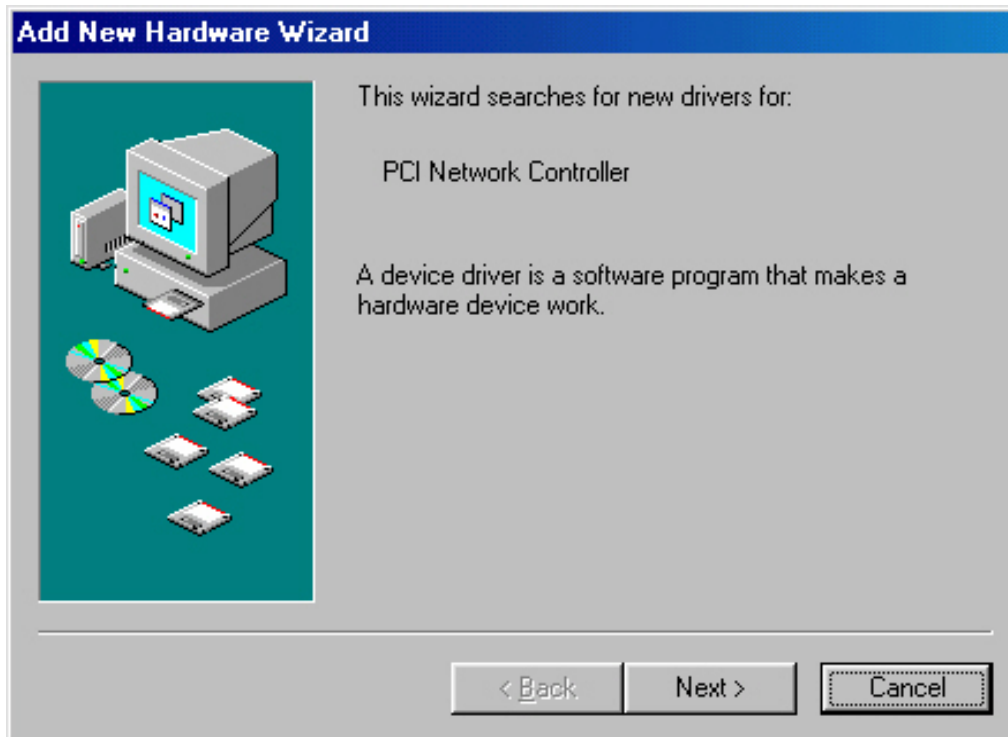
Step 2: Plug the WLAN Card into MINI-PCI slot on the motherboard.

Step 3: Install the antenna on the mount of the WLAN Card.

Step 4: Power on you PC.

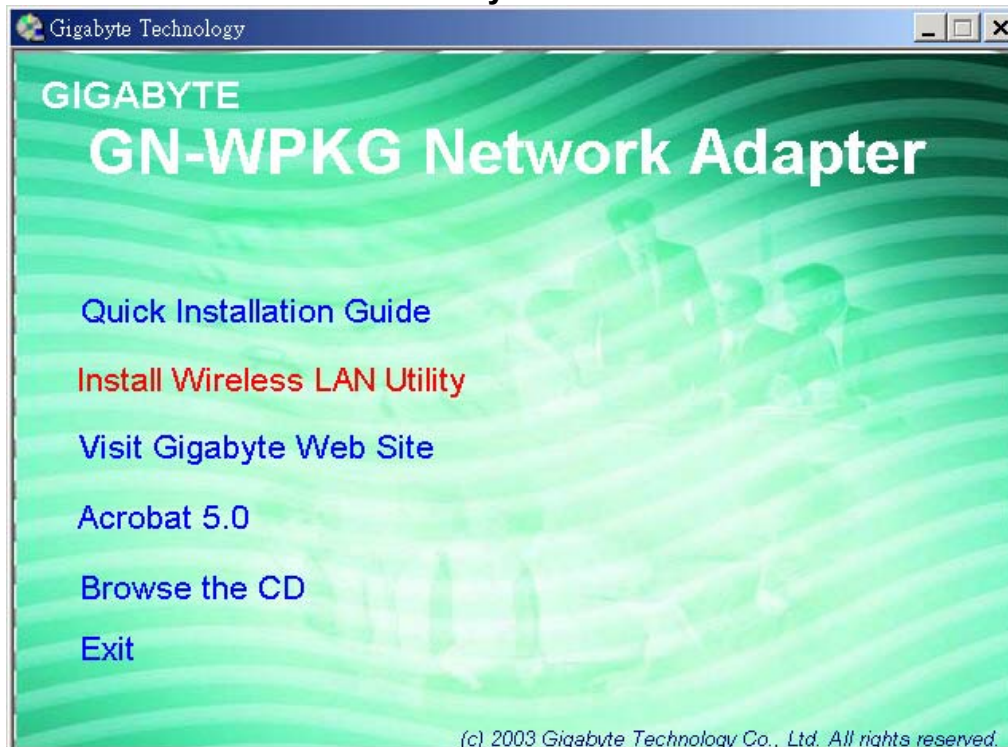
2-2. Installing The Driver & Utility (Win 98SE)

Step 1: Click “**Cancel**” for automatic installation.



Step 2: Insert the installation CD into the CD-ROM drive. The following window will pop up.

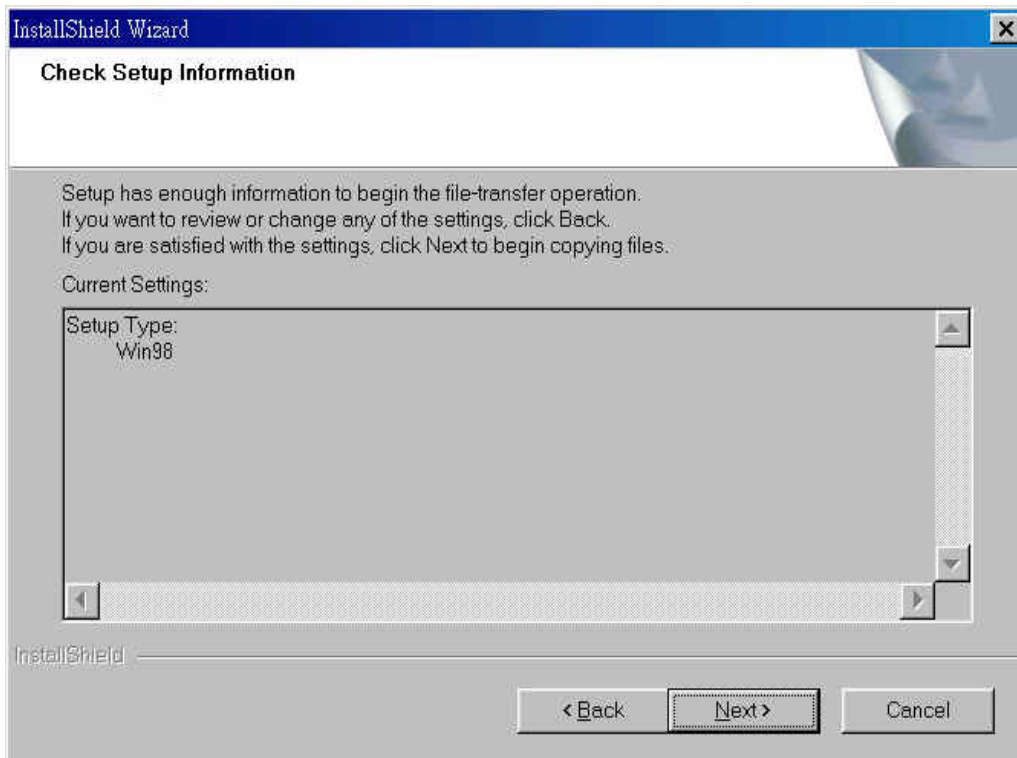
Step 3: Click “**Install Wireless LAN Utility**”.



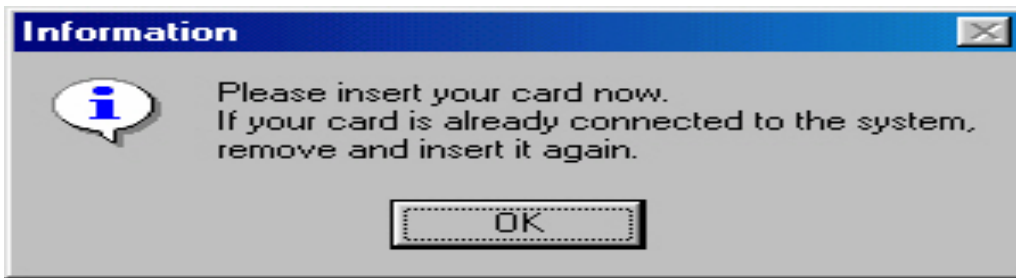
Step 4: Click “Next”.



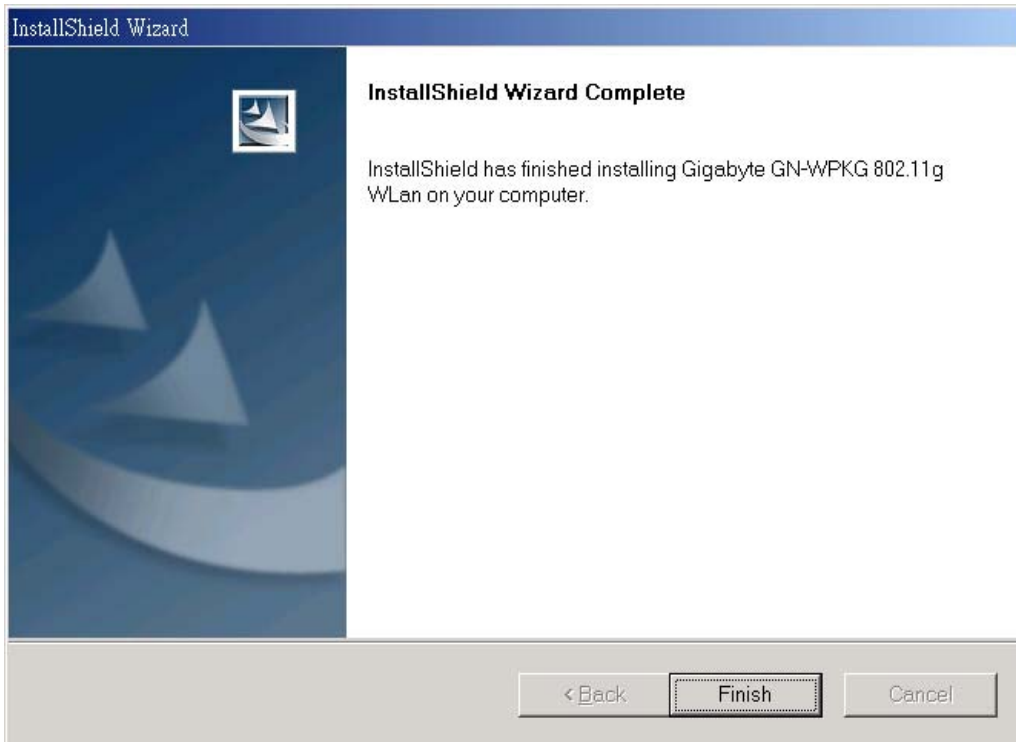
Step 5: Click “Next”.



Step 6: Click “OK”.



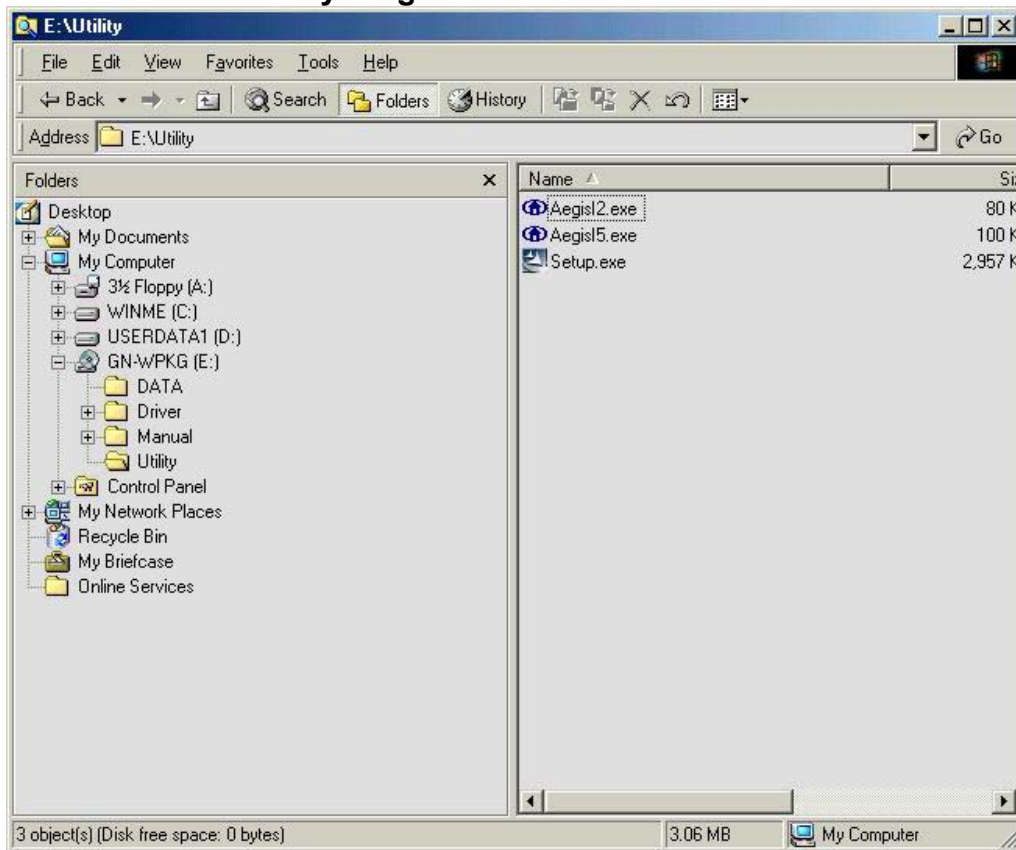
Step 7: Click “Finish”.



Step 8: To install 802.1X authentication function, click “Browse the CD”.



Step 9: Run “CD-ROM:\\Utility \\AegisI2.exe” of the installation CD.



Step 10: Click “Install”.

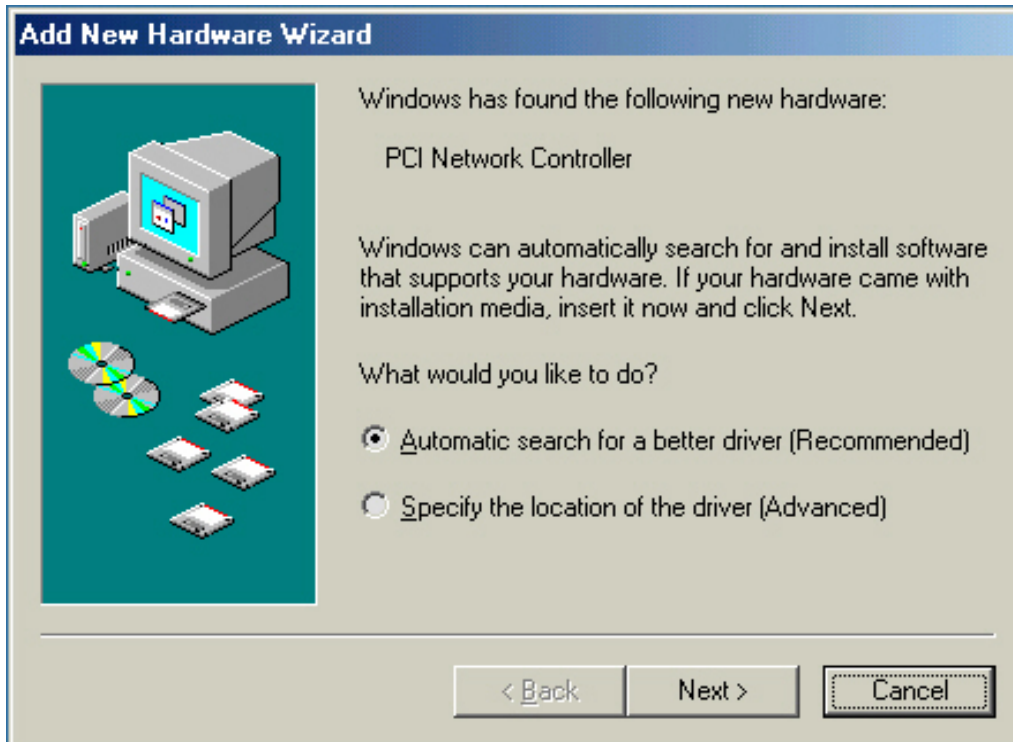


Step 11: Click “Cancel”. Windows may reboot after the installation.



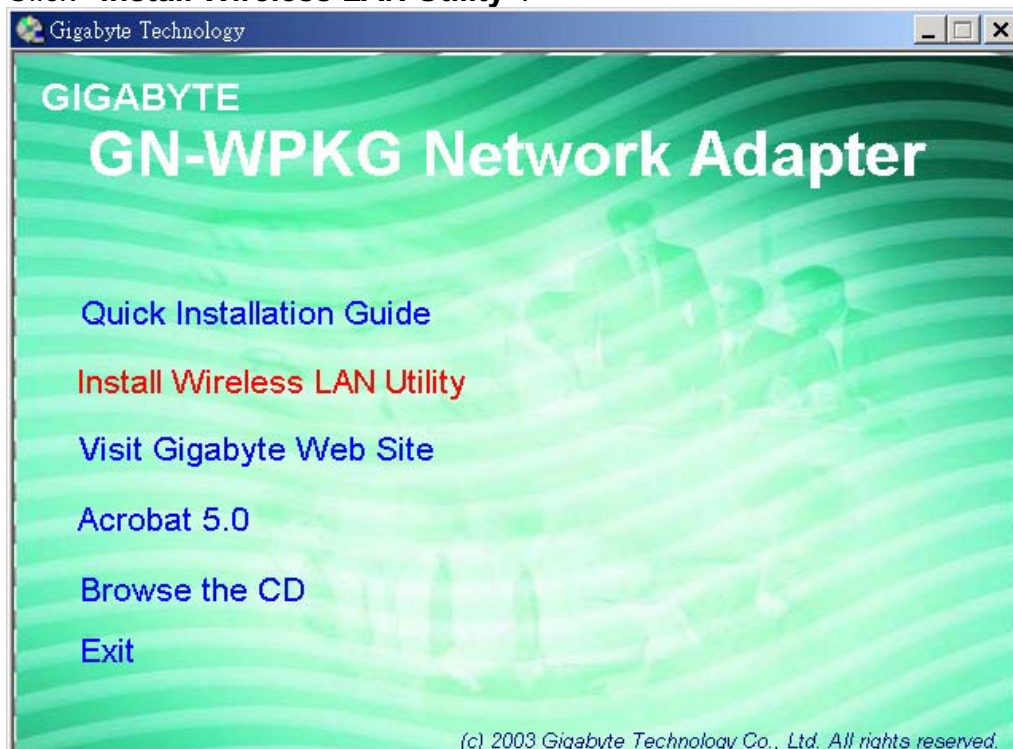
2-3. Installing The Driver & Utility (Win ME)

Step 1: Click “Cancel” for automatic installation.



Step 2: Insert the installation CD into the CD-ROM drive. The following window will pop up.

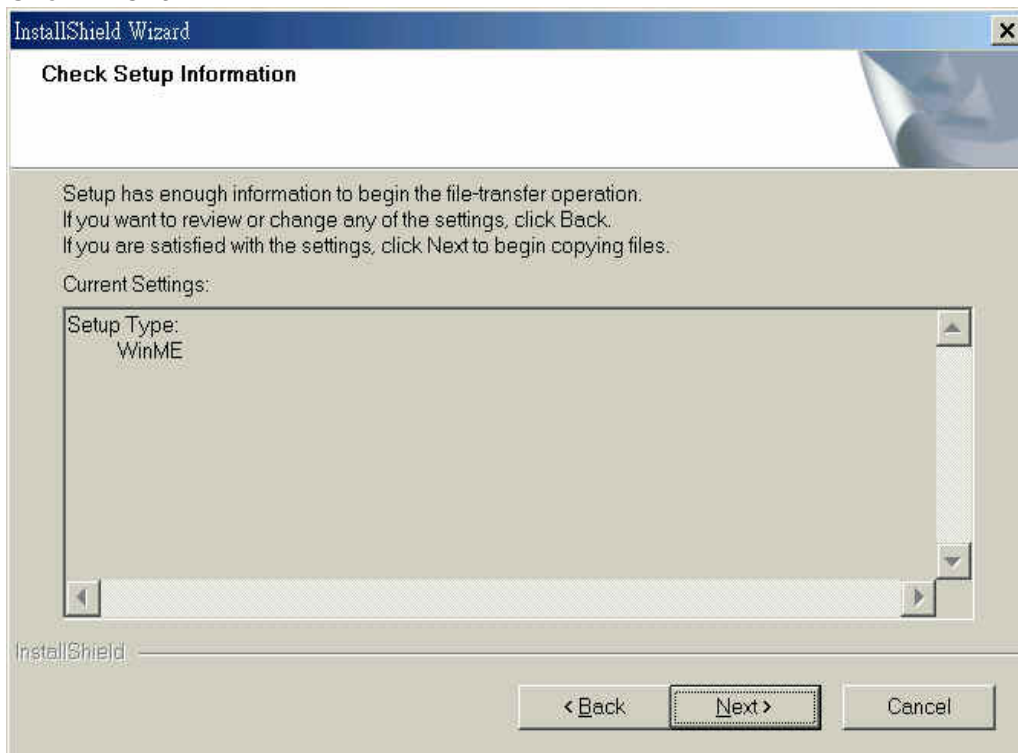
Step 3: Click “Install Wireless LAN Utility”.



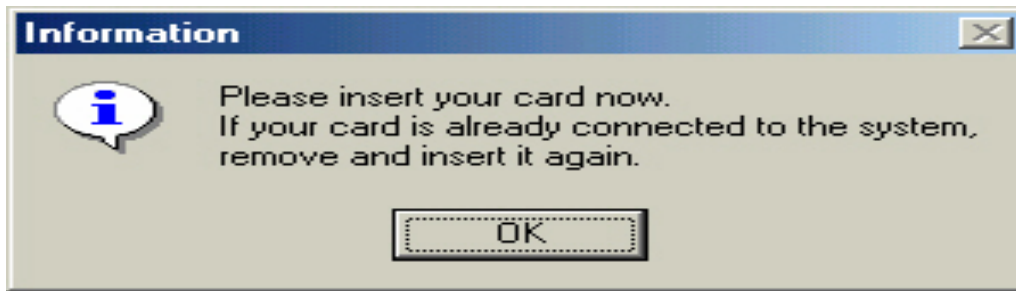
Step 4: Click “Next”.



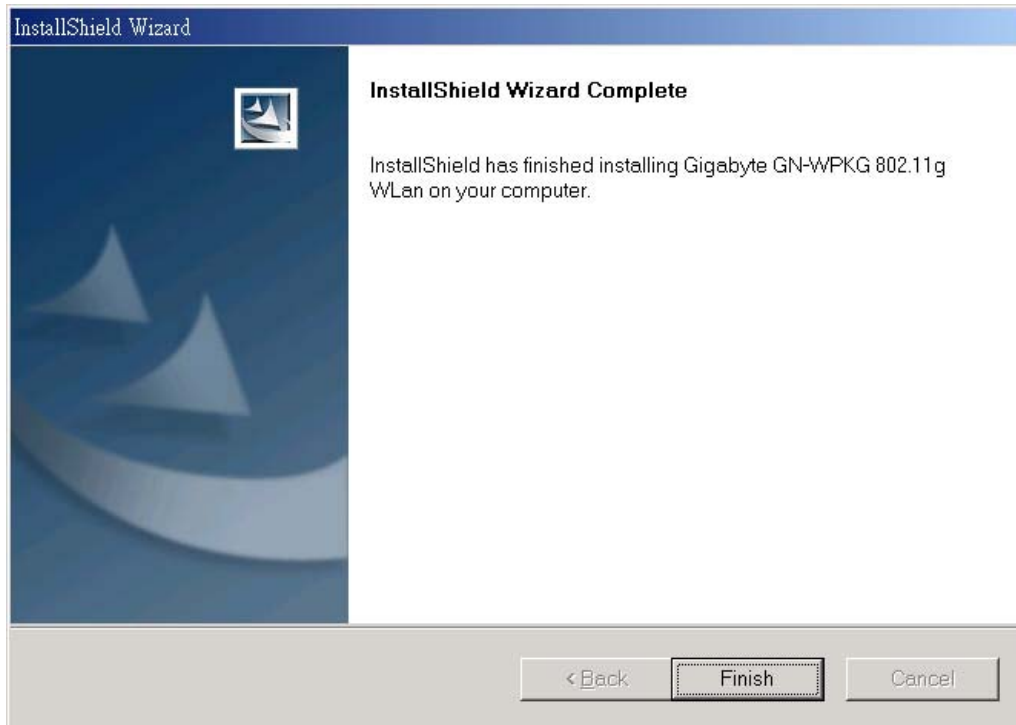
Step 5: Click “Next”.



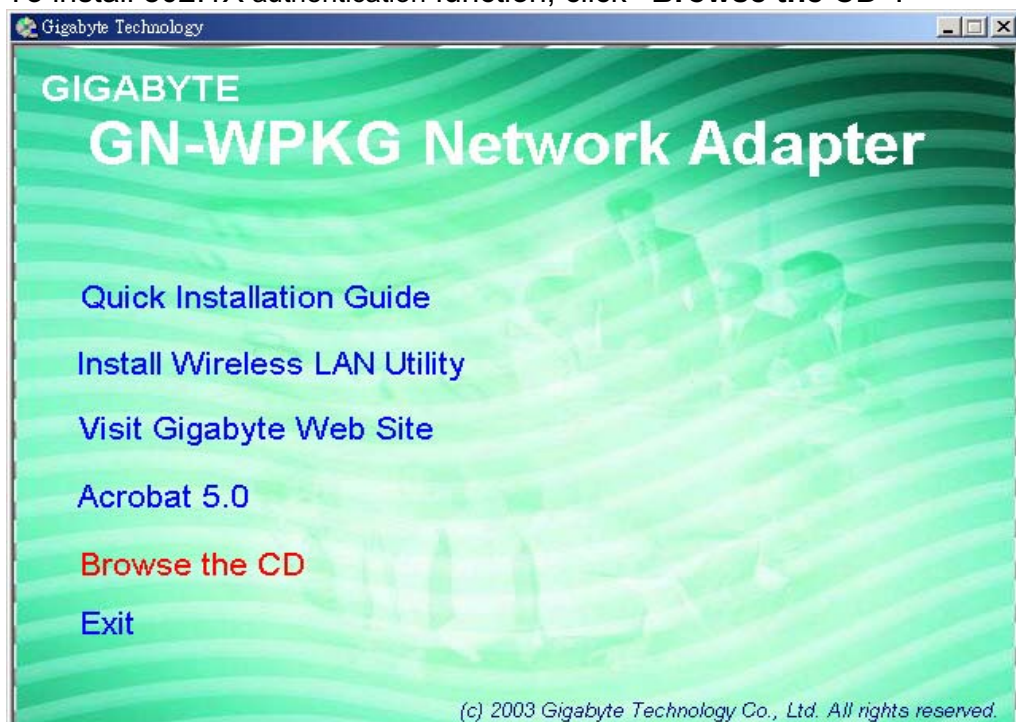
Step 6: Click **“OK”**.



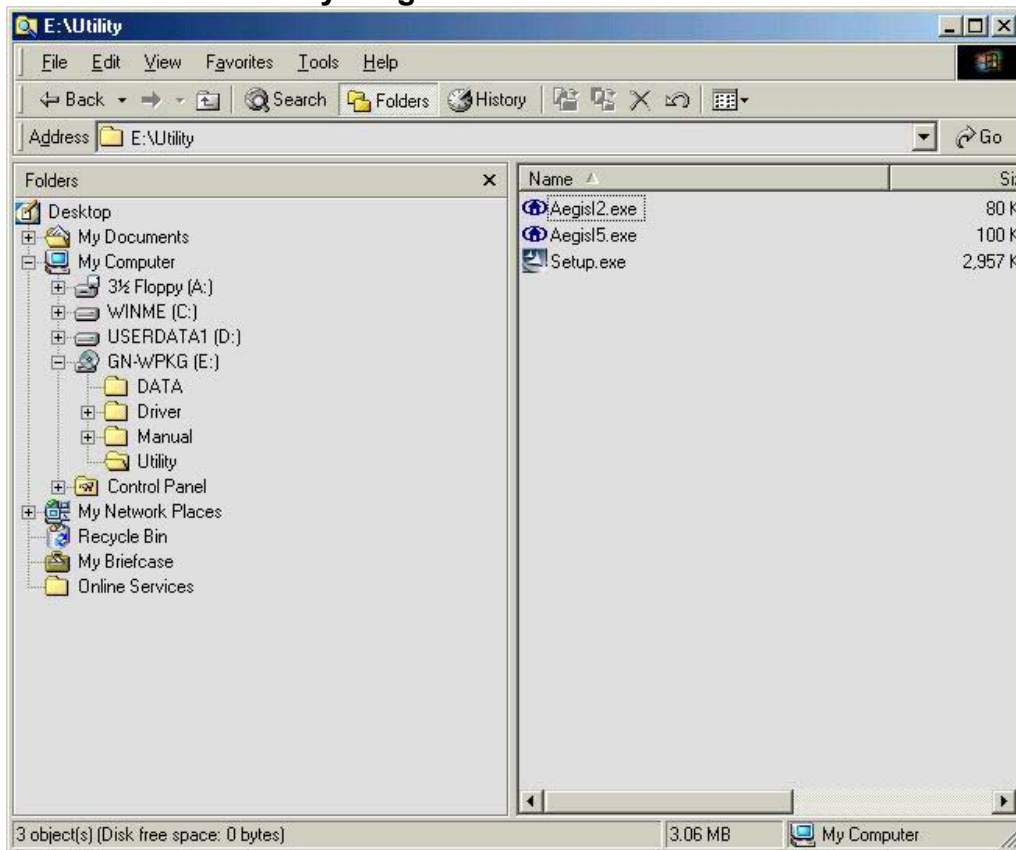
Step 7: Click **“Finish”**.



Step 8: To install 802.1X authentication function, click **“Browse the CD”**.



Step 9: Run “CD-ROM:\\Utility \\AegisI2.exe” of the installation CD.



Step 10: Click “Install”.



Step 11: Click “Cancel”. Windows may reboot after the installation.



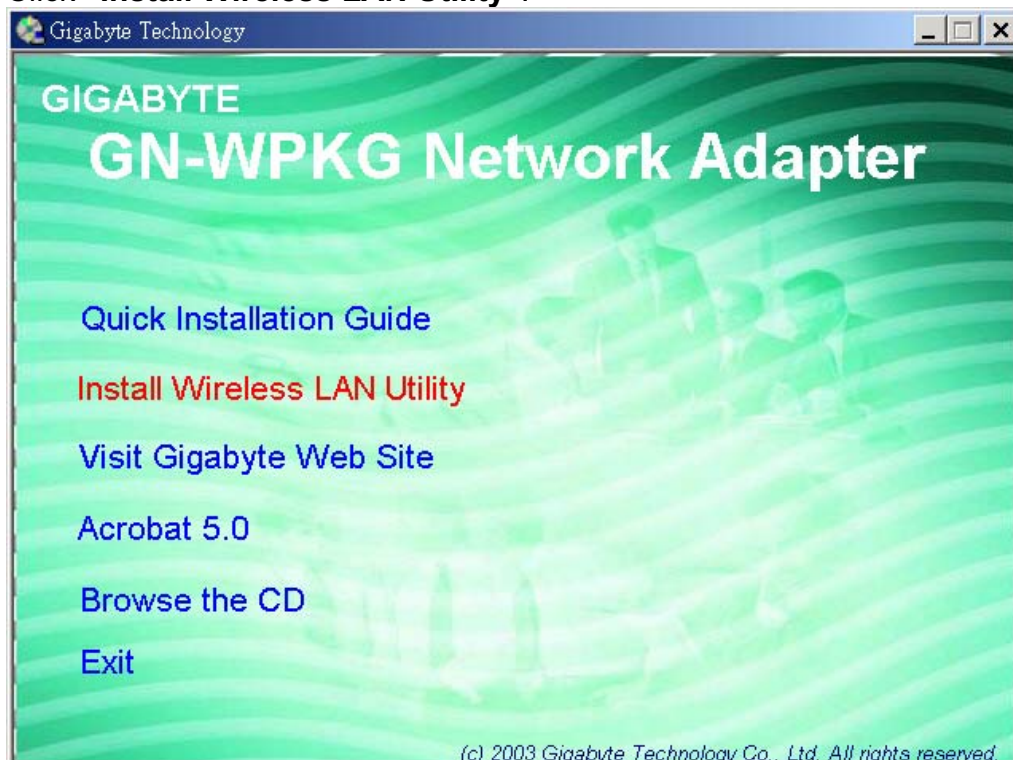
2-4. Installing The Driver & Utility (Win2000)

Step 1: Click “**Cancel**” for automatic installation.



Step 2: Insert the installation CD into the CD-ROM drive. The following window will pop up.

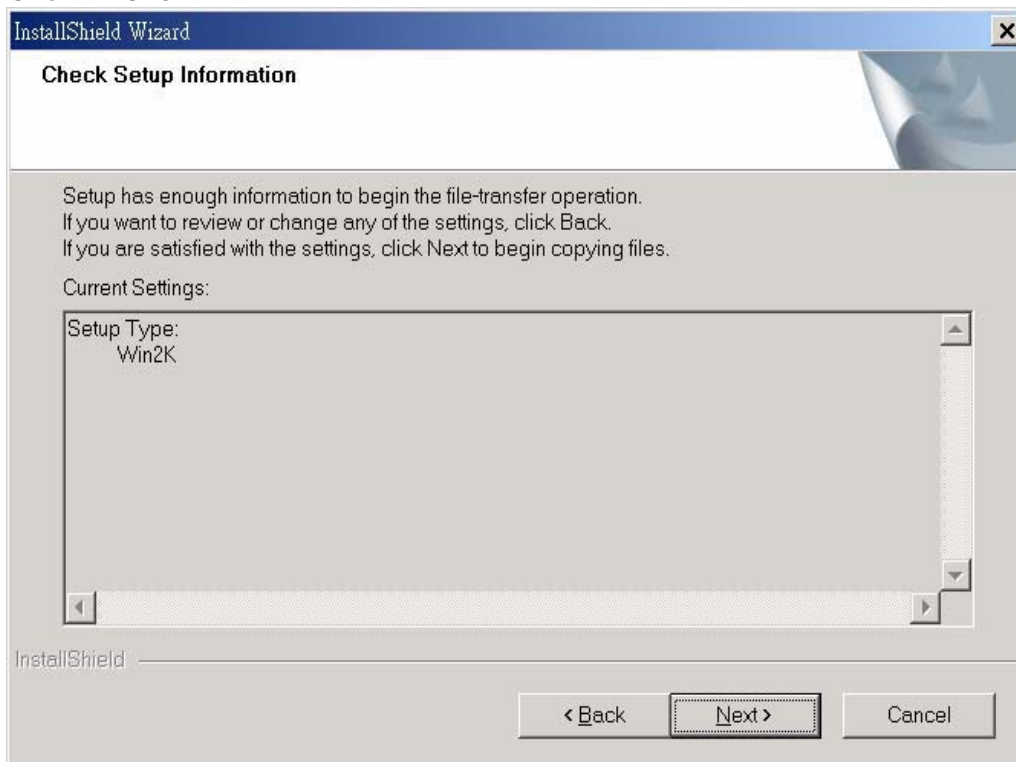
Step 3: Click “**Install Wireless LAN Utility**”.



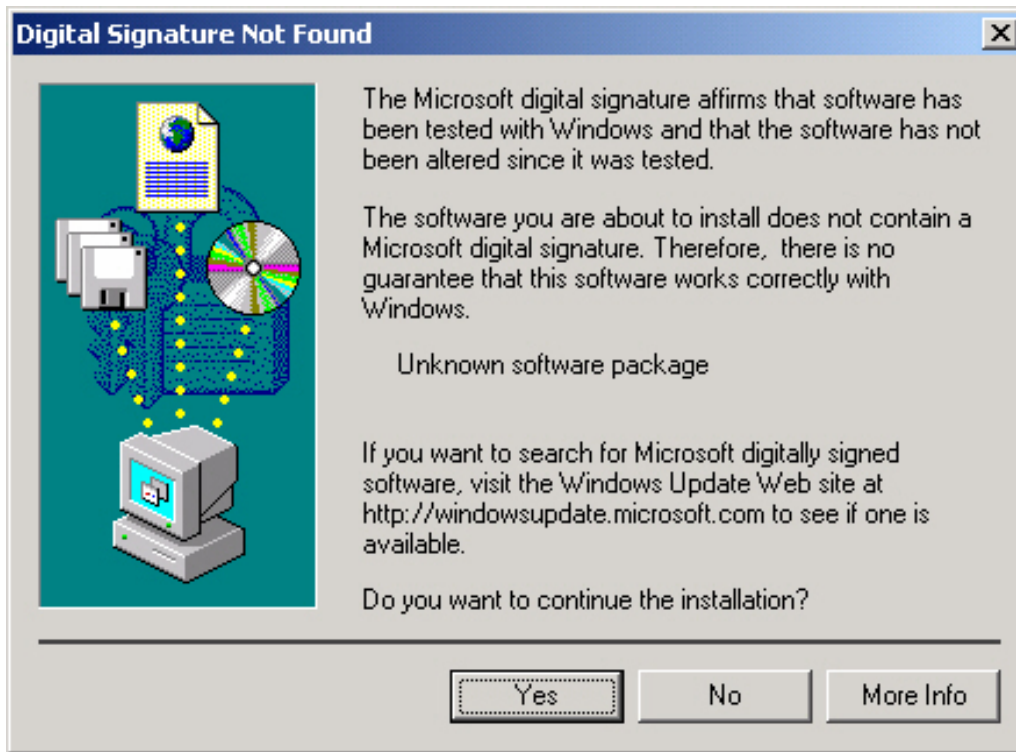
Step 4: Click “Next”.



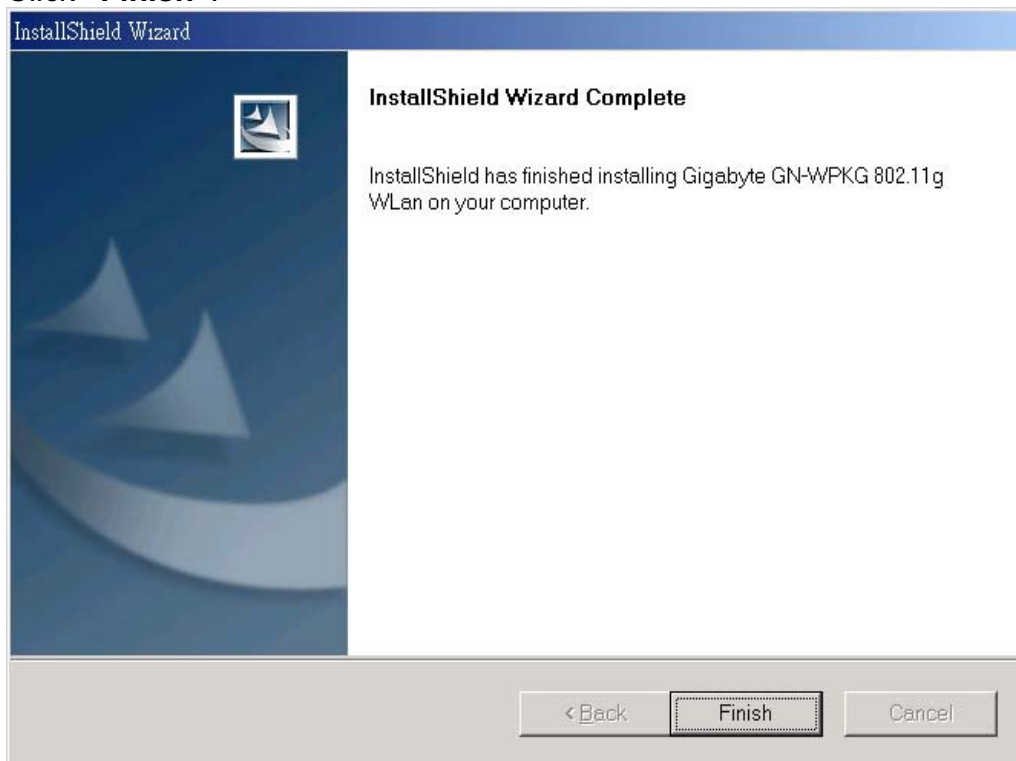
Step 5: Click “Next”.



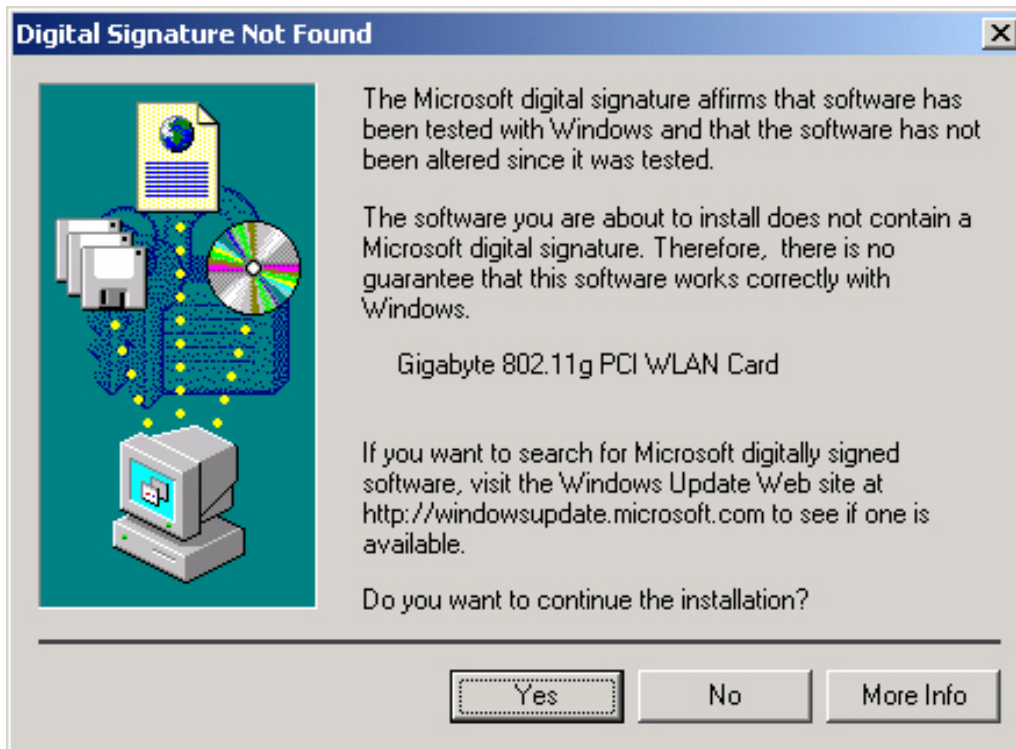
Step 6: Click “OK”.



Step 7: Click “Finish”.



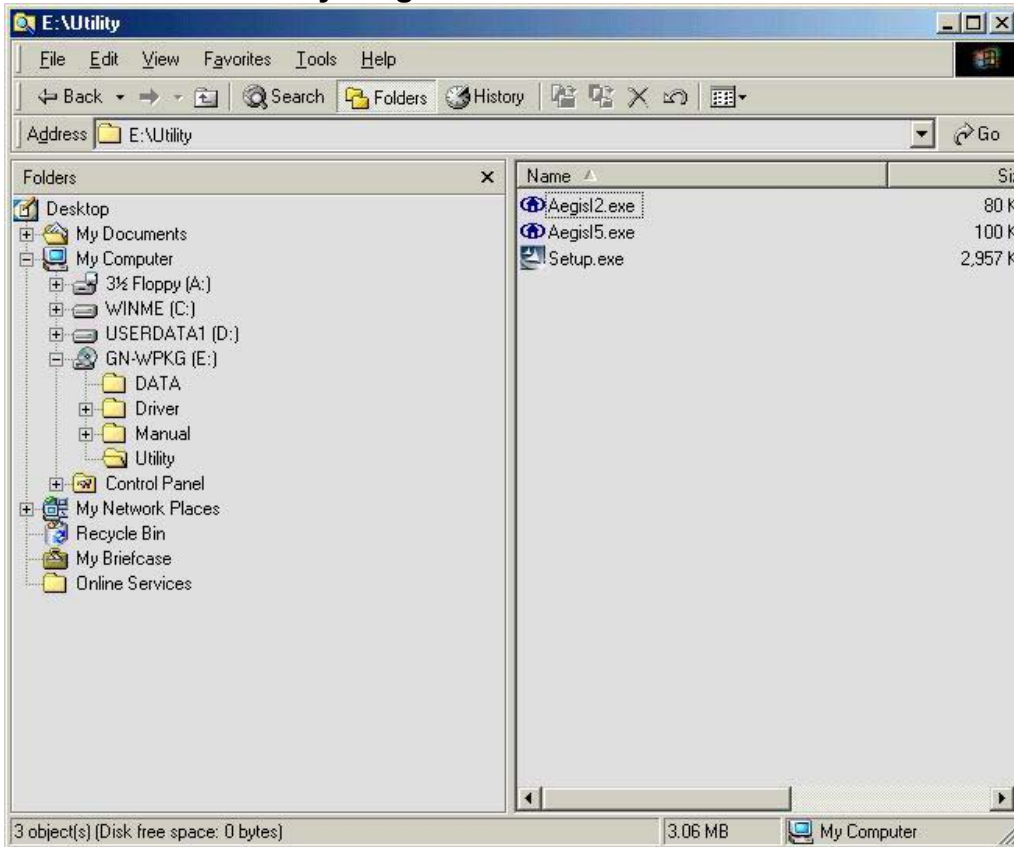
Step 8: Click “Yes”.



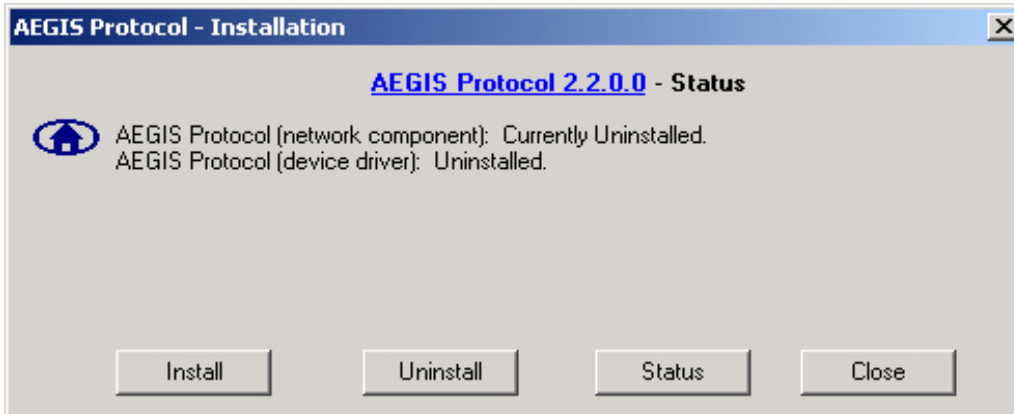
Step 9: To install 802.1X authentication function, click “Browse the CD”.



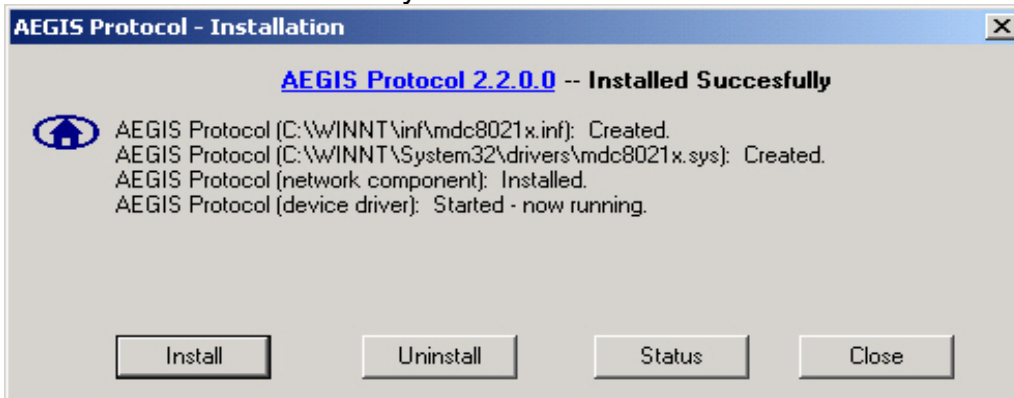
Step 10: Run “CD-ROM:\\Utility \\AegisI2.exe” of the installation CD.



Step 11: Click “Install”.



Step 12: Click “Close”. Windows may reboot after the installation.



2-5. Installing The Driver & Utility (Win XP)

Step 1: Click “**Cancel**” for automatic installation.

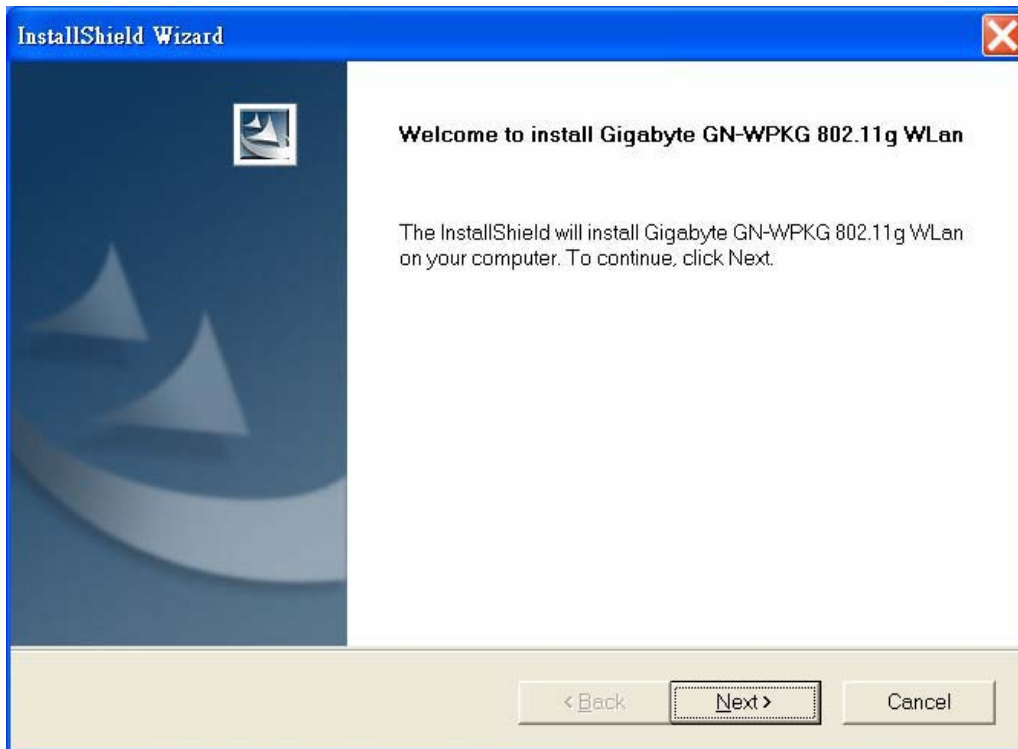


Step 2: Insert the installation CD into the CD-ROM drive. The following window will pop up.

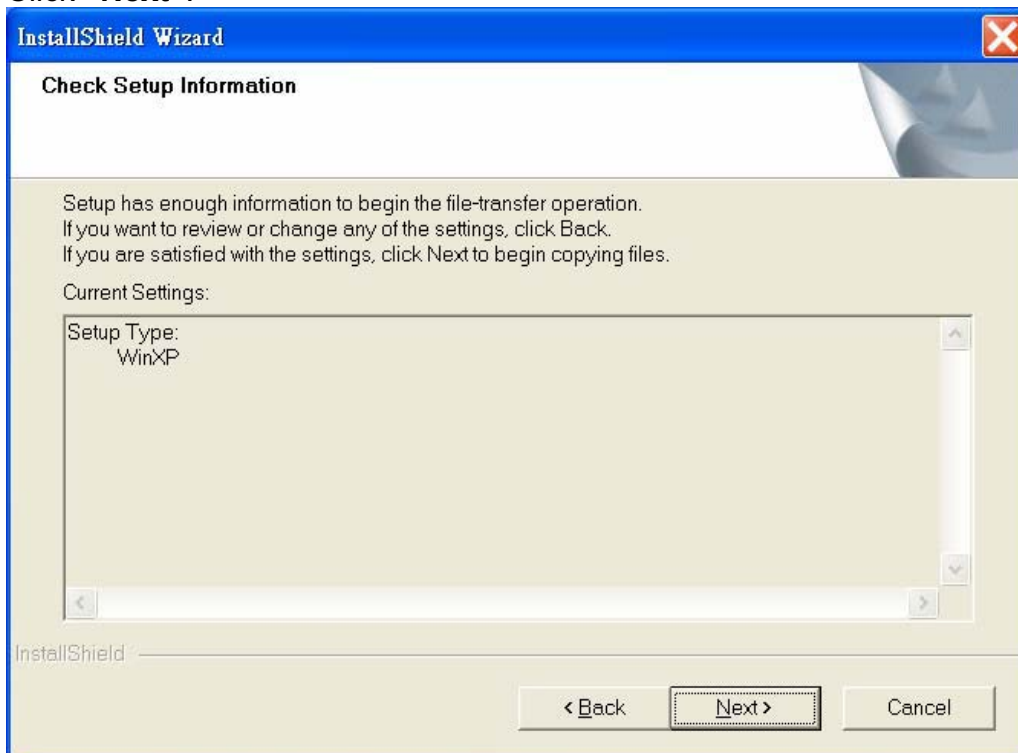
Step 3: Click “**Install Wireless LAN Utility**”.



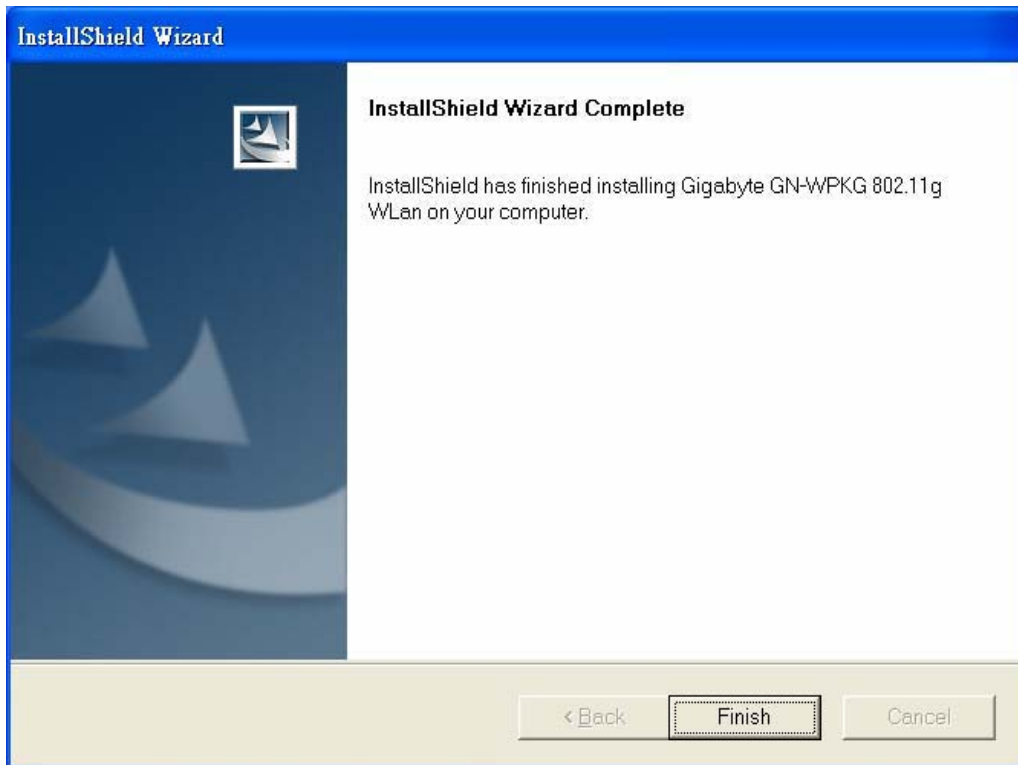
Step 4: Click “Next”.



Step 5: Click “Next”.



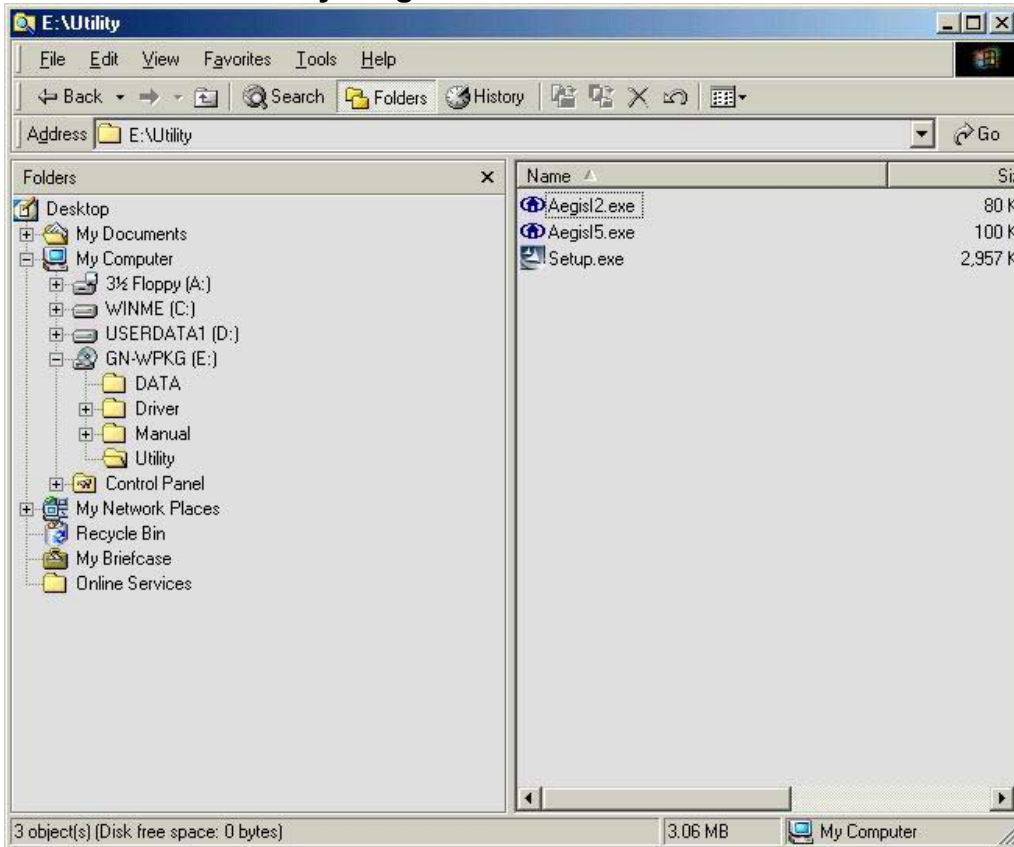
Step 6: Click **“Finish”**.



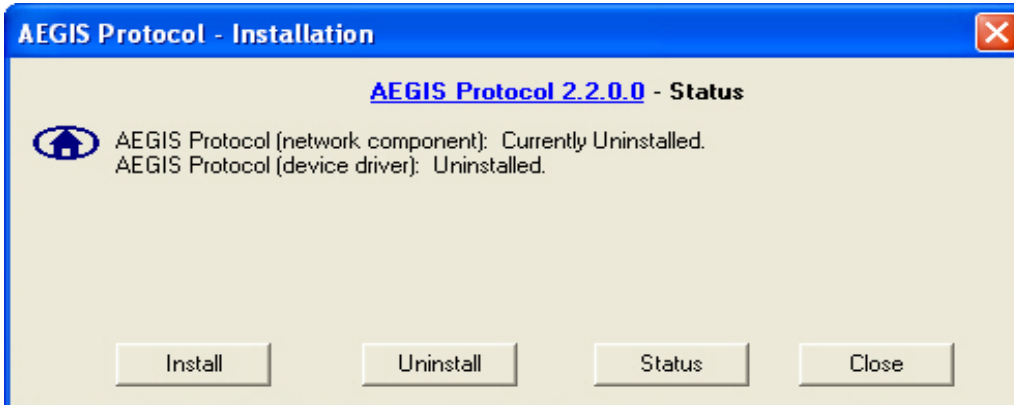
Step 7: To install 802.1X authentication function, click **“Browse the CD”**.



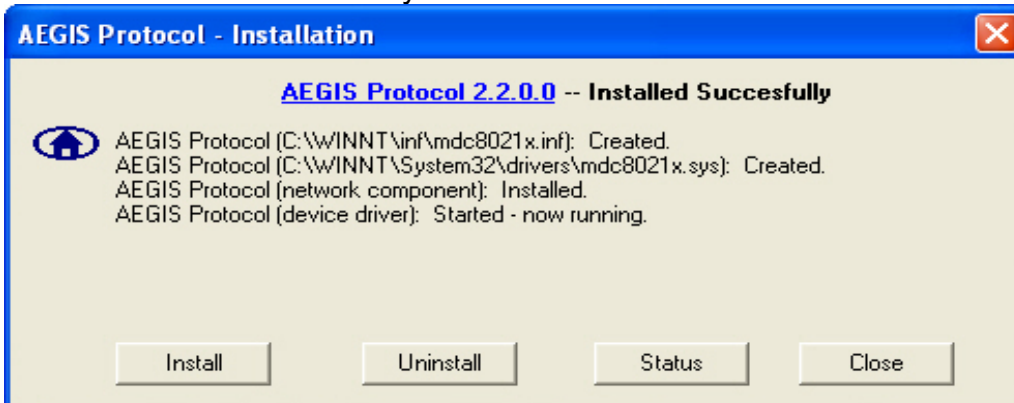
Step 8: Run “CD-ROM:\Utility \AegisI5.exe” of the installation CD.



Step 9: Click “Install”.



Step 10: Click “Close”. Windows may reboot after the installation.



Chapter 3 Using the Utility

The Configuration & Monitor Utility is a powerful application that helps you to configure the network card and monitor the statistics of the communication link. This application permits the configuration for parameters while the card is operating. It also offers more configuration options and supports Windows 98SE/Me/2000/XP. It appears as an icon in the task bar at the bottom right corner of screen whenever the card is operating (see **Figure 3-1**). The icon can tell you the received signal strength by four small lights. You can open it by double-clicking on this icon.

Figure 3-1. The icon of the Configuration & Monitor Utility



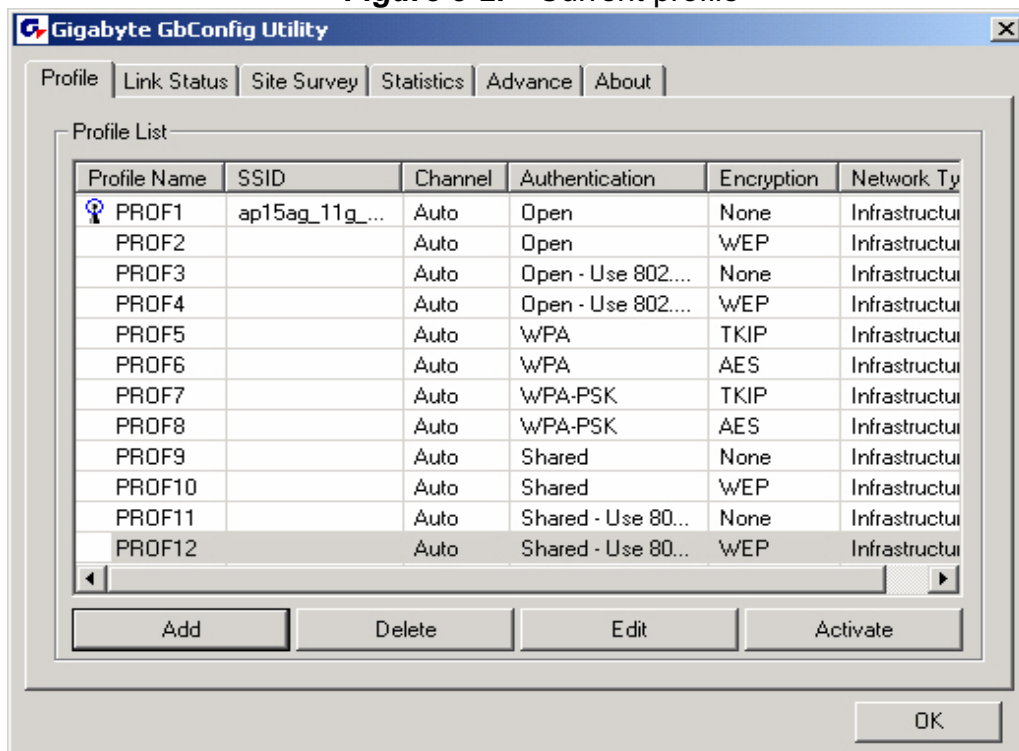
You may double click this icon to open the utility or go to Windows **Start** menu, select **Programs, GIGA-BYTE 802.11 WLAN, GN-WI30N-RH** and then **GN-WI30N-RH Utility**.

Note: You can use the utility to change configuration when the WLAN card is operating. You have to use the network configuration tool provided by the operation system when the WLAN card is not in use.

3-1. “Profile” Setting


The “**Profile**” tab shows you the current association information about the profile. (see **Figure 3-2**).

Figure 3-2. Current profile



Description of items in **Figure 3-2** is as follows:

Profile Name: You can save various wireless settings for different environments.

: In use.

SSID: Displays the SSID of the WLAN card or Access Point.

Channel: Shows which channel is current in use.

Authentication: Authentication types currently in use include “OPEN”, “WPA”, “WPA-PSK” and “Shared”.

Encryption: Four encryption types currently used in the profile include “None”, “WEP”, “AES” and “TKIP”.

Network Type: Informs you if an Access Point (infrastructure) or other access points (802.11 Ad Hoc) is connected. When it is 802.11 Ad Hoc, we can select a channel for all members in 802.11 Ad Hoc.

ADD: Add profile (see **Figure 3-3**).

DELETE: Delete the selected profile.

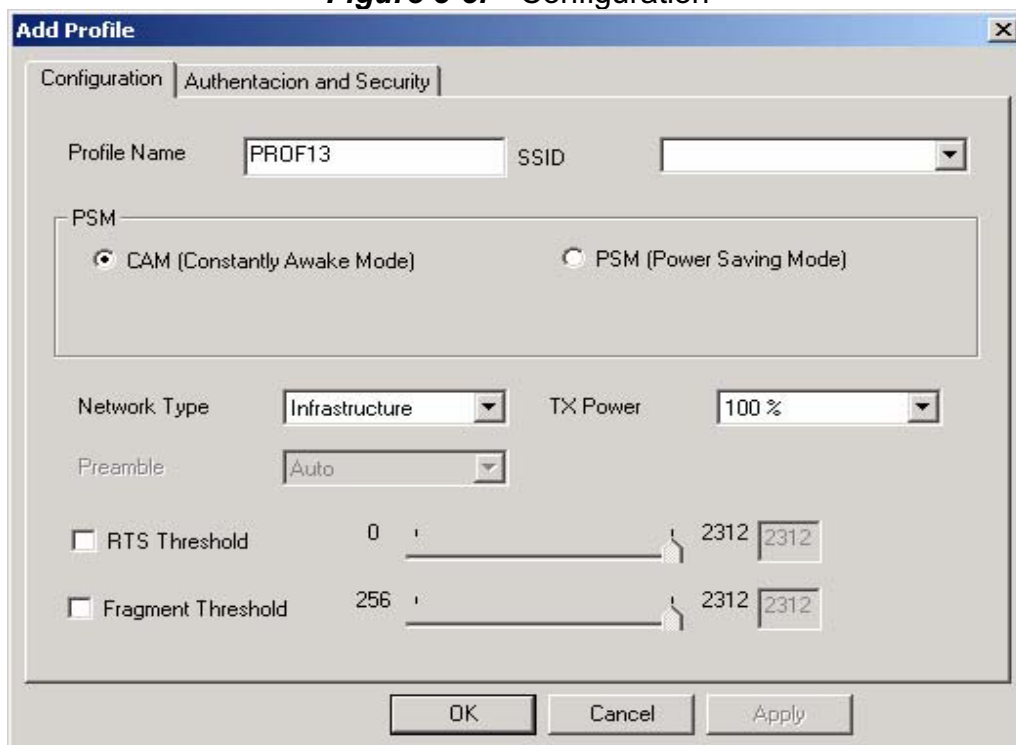
EDIT: Edit the selected profile.

ACTIVATE: Activate the selected profile.

3-1-1. Configuration

You can use ADD or EDIT button to set different configurations. (see **Figure 3-3**)

Figure 3-3. Configuration



The screenshot shows a Windows-style dialog box titled "Add Profile" with a close button (X) in the top right corner. The dialog has two tabs: "Configuration" (selected) and "Authentacion and Security".

Under the "Configuration" tab, the following fields and controls are visible:

- Profile Name:** A text input field containing "PROF13".
- SSID:** A dropdown menu.
- PSM:** A group box containing two radio buttons: "CAM (Constantly Awake Mode)" (selected) and "PSM (Power Saving Mode)".
- Network Type:** A dropdown menu set to "Infrastructure".
- TX Power:** A dropdown menu set to "100 %".
- Preamble:** A dropdown menu set to "Auto".
- RTS Threshold:** A checkbox (unchecked) followed by a slider and a text box containing "2312".
- Fragment Threshold:** A checkbox (unchecked) followed by a slider and a text box containing "2312".

At the bottom of the dialog, there are three buttons: "OK", "Cancel", and "Apply".

Description of items in **Figure 3-3** is as follows:

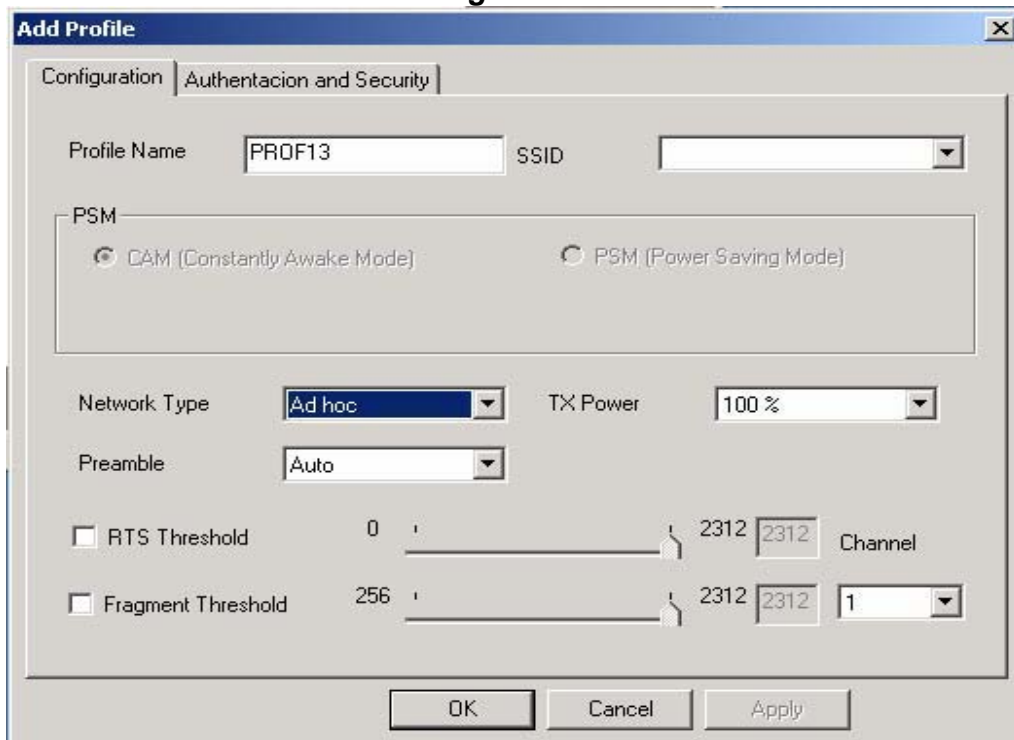
Profile Name: Users can save different profiles names for different configurations.

SSID: Select the AP detected by the system from the drop-down list or input a SSID.

Power Saving mode: Transceivers consume a lot of power in WLAN. Select “Power Saving Mode” (PSM) to turn off transceivers when no data is transmitted or select CAM to continuously turn on transceivers.

Network Type: “Infrastructure” and “802.11 Ad Hoc”. When the network type is “Infrastructure”, PSM will function but not Preamble. On the contrary, when the network type is “802.11 Ad Hoc”, Preamble will function but not PSM. Besides, Channel option will appear (see **Figure 3-4**) and 802.1X Authentication will not function.

Figure 3-4



TX Power: Select percentage of transmitted power.

RTS Threshold: This is a mechanism implemented to prevent the “Hidden Node” problem, “Hidden Note” is a situation in which two stations are within range of the same Access Point, but are not within range of each other. Therefore, they are hidden nodes for each other and can not detect each other. This mechanism is a way to prevent data collision when WLAN equipments require transmission.

Fragment Threshold: Fragmentation mechanism is used for improving the efficiency when high traffic flows along in the wireless network.

3-1-2. Authentication and Security:

If an authentication or security setting is configured in your Access Point or router, you must enable this function to ensure successful connection. Use the following tab to configure data security and ID authentication (see **Figure 3-5**). You may configure different settings in the profile, including 802.11 Protocol Authentication and Security and 802.1X Protocol.

Figure 3-5. Authentication and Security

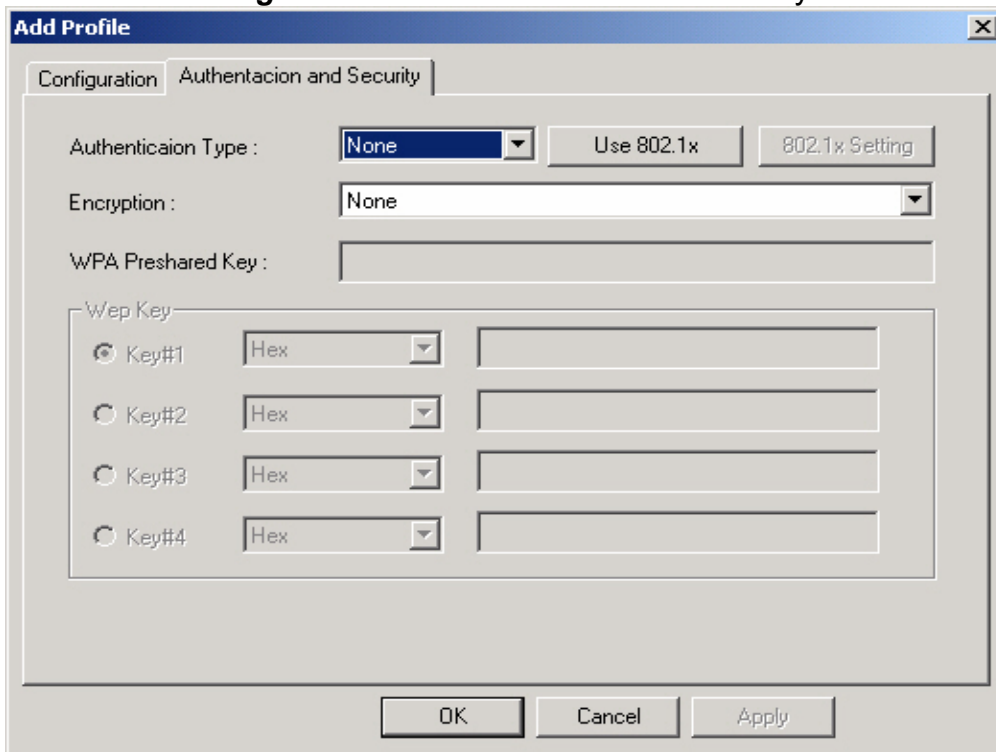


Table 3-1

Authentication	Security	Secure Key Setting	Use 802.1X
None	None	None	YES
	WEP	Key Setting	
Shared	None	None	YES
	WEP	Key	
WPA	TKIP	None	YES
	AES	None	
WPA-PSK	TKIP	WPA-PSK Key	NO
	AES	WPA-PSK Key	

3-1-2-1. 802.11 Authentication and Security

Authentication: Before a station connects to a SSID, the authentication type used by the SSID must be known. Authentication types include OPEN SYSTEM, WAP, WAP-PSK and SHARED.

Security: To prevent unauthorized access to data transmitted on the network, WLAN card provide a data encryption of high security. Another station have to use the same password and encryption to connect with you. Different authentication types have different level of security. Please refer to **Table 3-1**.

WEP encryption: Select one of the four keys as the default encrypted key. Users have to set key the connected to AP access point. If WEP Key is set to be manually connected to AP, no record will be kept. WEP Key can only be saved through the setting of profile.

1. Select one Key #.
2. Select one data type (Hex or ASCII).
3. Enter password. Please enter 26 hexadecimal digits or 13 ASCII digits.
4. Click “OK to save the settings.

WPA-PSK encryption: Use WPA-PSK (Preshared Key) for WPA-PSK encryption (TKIP and AES).

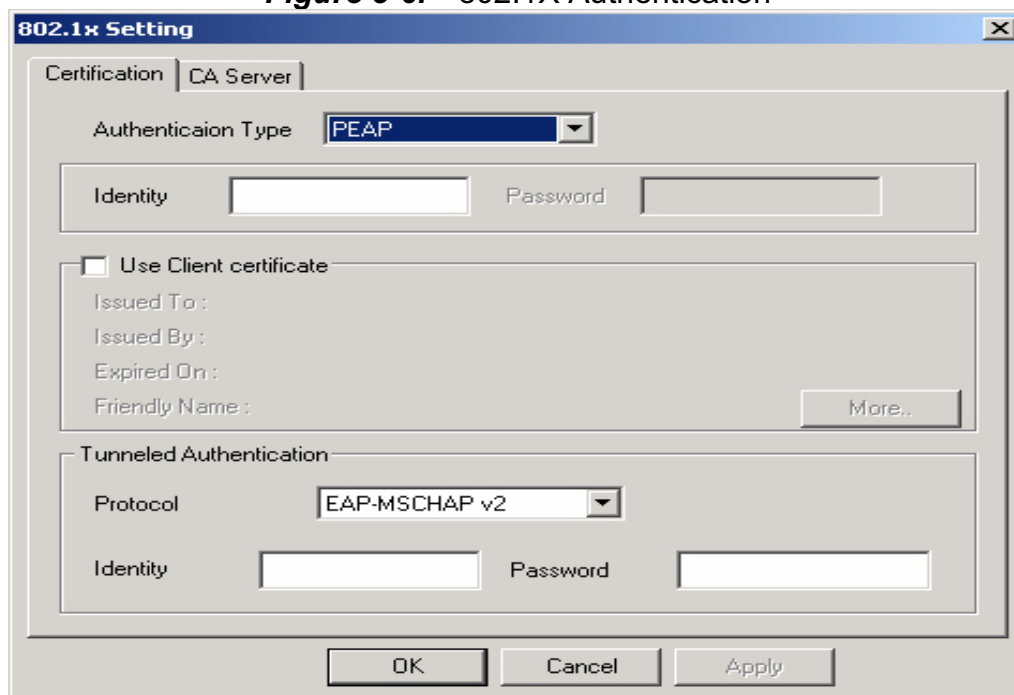
The system will read the Key with different types of encryption according to the length of Preshared Key.

1. Enter Preshared Key. Please enter 64 hexadecimal digits or 8~63 ASCII digits.
2. Click “OK to save these settings.

3-1-2-2. 802.1X Authentication

Click “**Use 802.1X Authentication**” and then “**Enter 802.1X configuration**”. When you select this option, you may configure information about authentication, such as Tunnel Protocol, ID and Password and Client Certificate or Certificate Chain. (see **Figure 3-6 and 3-8**)

Figure 3-6. 802.1X Authentication



Description of items in **Figure 3-6** is as follows:

Authentication type: PEAP, TLS/Smart Card, TTLS, LEAP and MD5-Challenge.

Identity: Users’ accounts.

Password: Passwords for users’ accounts can be used when LEAP and MD5-Challenge are selected as authentication types.

Use Client Certificate: This certificate is necessary for TLS and an option for PEPA and TTLS. Check “Use Client Certificate” to confirm if the Client Certificate is correct in the authentication process. Click “More” when selecting a Client Certificate (shown in **Figure 3-7**). Users can select one suitable certificate as Client Certificate.

Tunnel Authentication: PEPA and TTLS use two-step authentication method. The first step is that Server sets up a Tunnel with its authentication. No option is need to be set for Station with WLAN card. The second step is to confirm the validity of Station with assigned

authentication type in the Tunnel. Data needed for authentication includes Tunnel ID, Tunnel Password, Client Certificate or Server Authentication.

Protocol: Use assigned authentication type in the safe tunnel.

Tunnel ID: Users' accounts.

Password: Passwords for users' accounts.

Figure 3-7. Client Certificate List

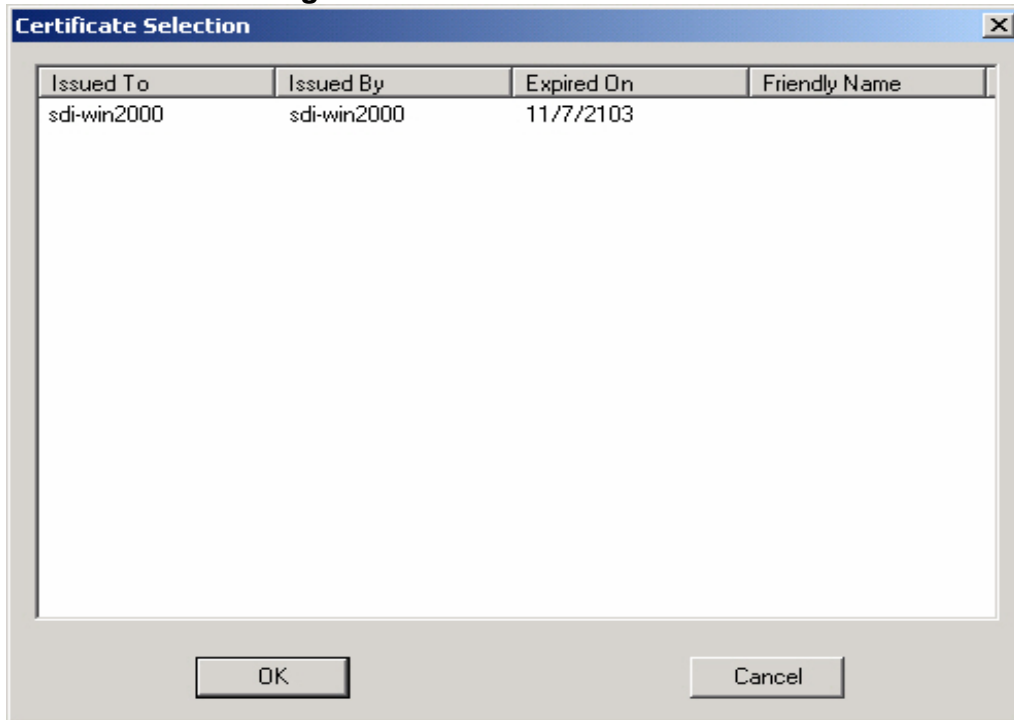
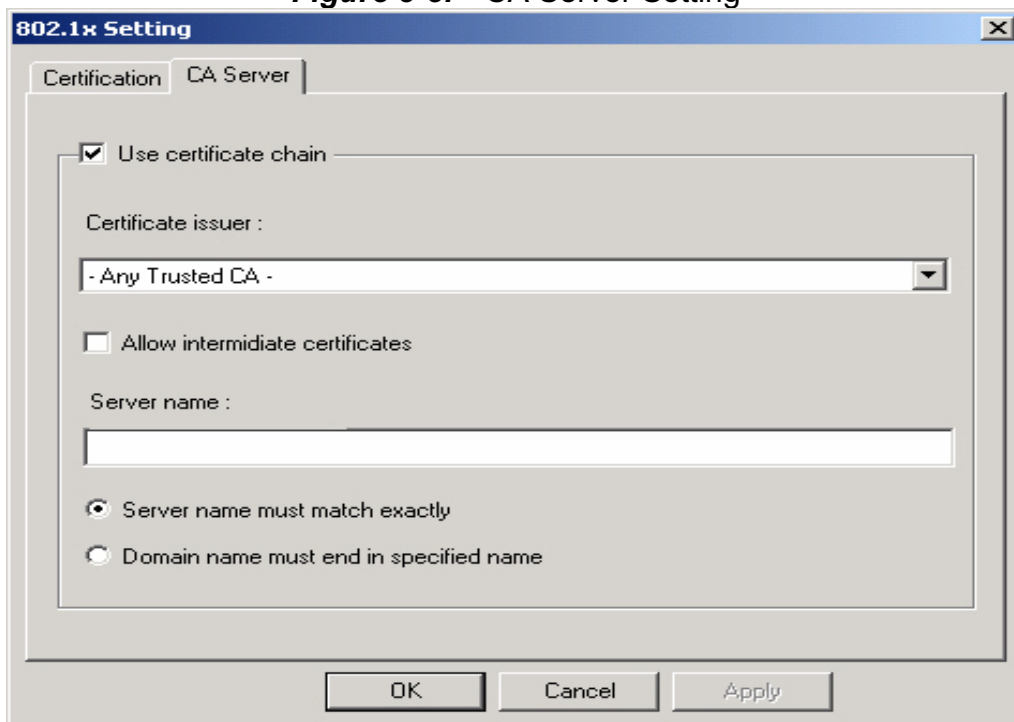


Figure 3-8. CA Server Setting



Description of items in **Figure 3-8** is as follows:

CA Server is used when TLS, TTLS or PEAP is in use. The Client can verify if such server is reliable and then transmit Client Certificate after the verification is confirmed. (if “Use Client Certificate” is checked)

Verify CA server:

1. Confirm if the Server Certificate is issued by assigned certificate issuer. If “Allow Intermediate Authentication” is checked, the server certificate can be issued by one intermediate certificate issuer.
2. Check the server name of server certificate is the same as the name entered by the user or belongs to the same domain.

Server Certificate: If “Server Certificate” is checked, it indicates that Client will confirm whether CA server is reliable.

Certificate issuer: CA of a server certificate can be selected from certificate issuers on the drop-down list.

Allow intermediate Certificates: When this option is checked, the certificate issuer can be an issuer recognized by a specific certificate issuer. On the other hand, the server certificate must be issued by a certificate issuer selected by the user.

Server name: This value can be a server name or the name of a domain where the server is located.

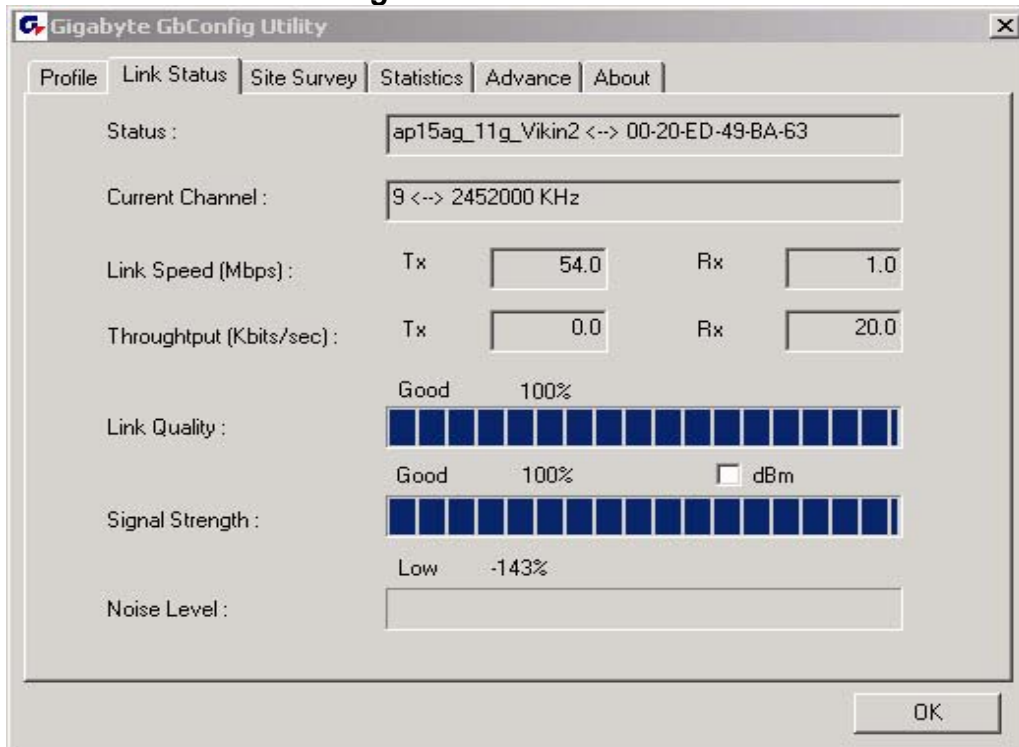
Server name must match exactly: If this option is selected, the server name of server certificate must be the same as “Server Name” or as the name of domain where the server is located.

Domain name must end in specified name: If this option is selected, the certificate issuer must be the domain or secondary domain entered in “Server Name”.

3-2. “Link Status” Setting

“Link Status” tab shows you the current association information about the card’s connection with a wireless network. (see **Figure 3-9**)

Figure 3-9. Link Status



Description of items in **Figure 3-9** is as follows:

Status: Shows current link status. “No Link” will appear on the screen when no connection is available. Otherwise, SSID and BSSID of a link will appear.

Current Channel: The current channel number used by the WLAN card.

Link Speed: Transmission rate (transferring and receiving) at which data is transferred between Stations with WLAN Card and AP. The speed will adjust according to different modes (802.11b, 11g or mixed) or distance.

Throughput: displays the transmitting (Tx) and receiving (Rx) bytes per second.

Link Quality: Measures quality of the link according to the quality of received AP signal.

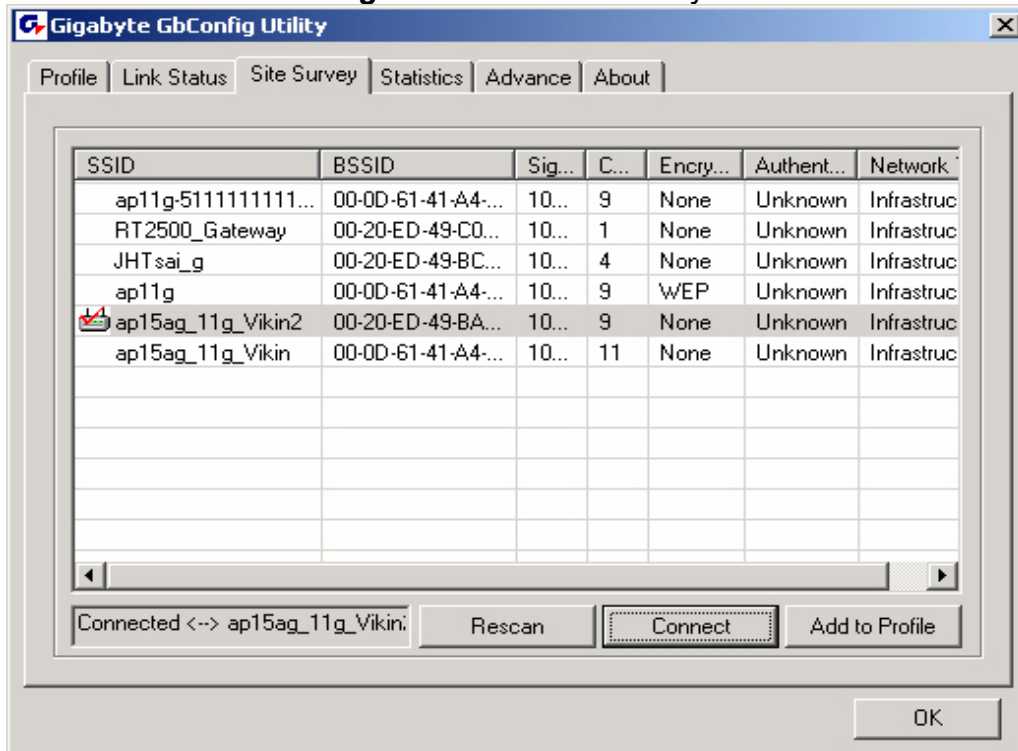
Signal Strength: Measures signal strength received by RF signal processor and displays the signal strength in dBm.

Noise Level: Noise level during connection.

3-3. “Site Survey”

Setting “**Site Survey**” tab shows you the list of reachable access points and/or peer-to-peer Stations. You can double click SSID that you want to connect or click “**Connect**”. (see *Figure 3-9*)

Figure 3-10. Site Survey



Description of items in *Figure 3-10* is as follows:

AP Account: Access Points' accounts.

BSSID: Displays the MAC address of the Access Point or center station.

Signal Strength: Displays the strength of the signal from a station to the AP.

Channel: Displays the current channel number used by the Access Point.

Encryption: A security method used by the Access Point.

Authentication: The authentication type used by the Access Point.

Network Type: Informs you if an Access Point (infrastructure) or other stations (802.11 Ad Hoc) is connected. When it is 802.11 Ad Hoc, we can select a channel for all members in 802.11 Ad Hoc.

RESCAN: Rescan the available network and then refresh the result.

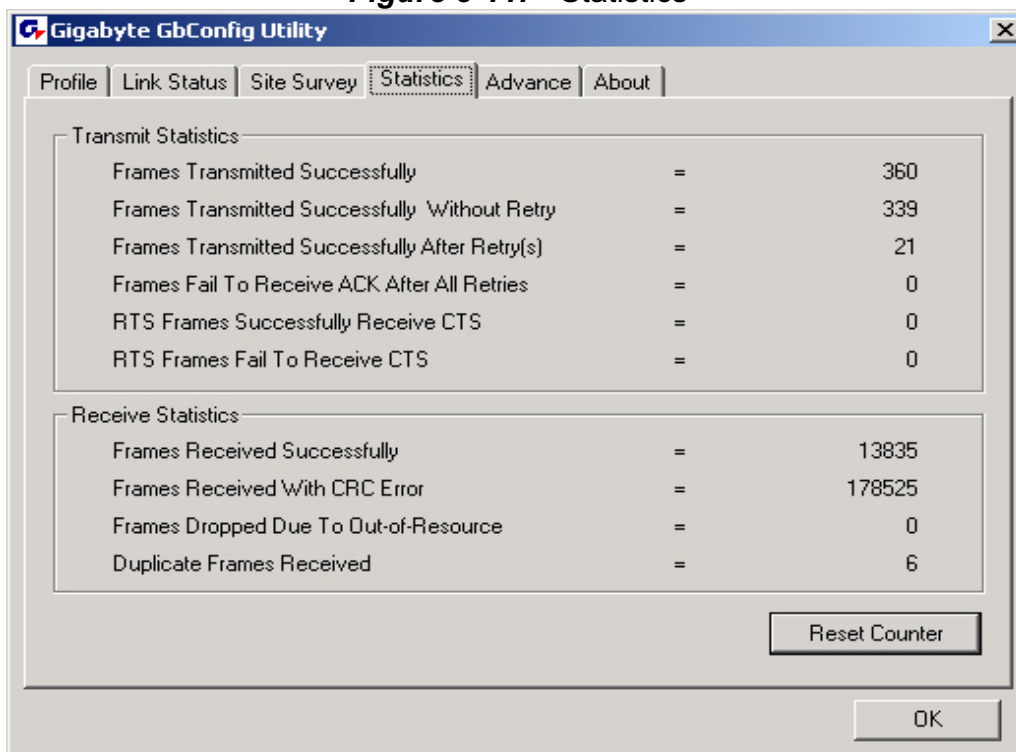
Connect: Connects with a specific Access Point.

ADD PROFILE: Adds a specific Access Point into the profile.

3-4. “Statistics” Setting

“Statistics” tab shows you the number of packets sent and received by the card (see *Figure 3-11*)

Figure 3-11. Statistics



Description of items in *Figure 3-11* is as follows:

Frames Transmitted Successfully: Number of frames transmitted successfully.

Frames Transmitted Successfully Without Retry: Number of frames transmitted successfully, excluding packets transmitted successfully with more than one retry.

Frames Transmitted Successfully After Retry[s]: Number of frames transmitted successfully with more than one retry.

Frames Fail To Receive ACK After All Retries: Number of frames failing to receive ACK after many retries.

RTS Frames Successfully Receive CTS: Number of RTS frames successfully received CTS (Clear To Send) from AP.

RTS Frames Fail To Receive CTS: Number of RTS frames fail to receive CTS from AP.

Frames Receive Successfully: Number of frames received successfully.

Frames Receive With CRC Error: Number of frames received with CRC Errors.

Frames Dropped Due TO Out-of-Resource: Number of frames dropped due to out-of-resource.

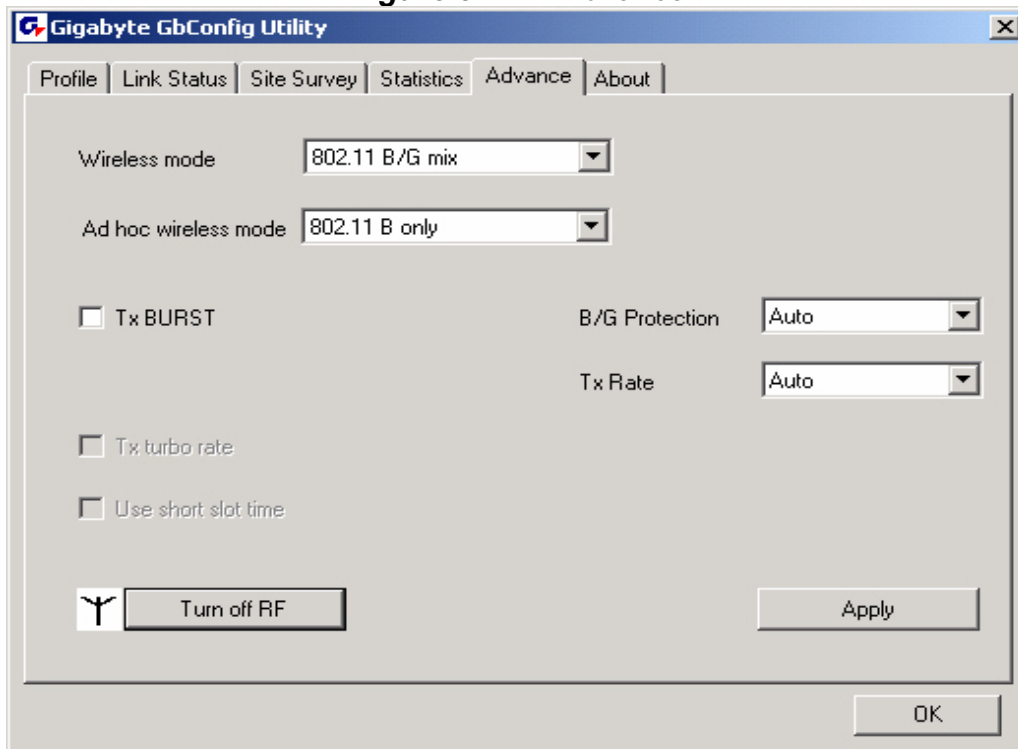
Duplicate Frames Received: Number of duplicate frames received.

Reset Counter: Resets the counter to zero.

3-5. “Advance” Setting

“Advance” tab includes fields of various parameters to review or change drivers. Just click “Apply” button to apply any parameter change to the driver in the tab. A reboot is not needed for the WLAN card (see **Figure 3-12**)

Figure 3-12. Advance



Description of items in **Figure 3-12** is as follows:

Wireless Mode: Sets infrastructure Protocols, including 802.11 B/G mix and 802.11 B Only.

Ad Hoc Wireless Mode: Sets Ad Hoc Wireless Protocols, including 802.11 B/G mix, 802.11 B Only and 802.11 G Only.

TX Burst: The longest interval between frames is normally one DIFS while frames are transmitted. When this setting is open, the longest interval between frames is one SIFS that means the system is allowed to transmit higher capacity of data in one interval.

B/G Protection: 802.11b uses CCK modulation. 802.11g uses OFDM while CCK modulation for 802.11b is compatible. To prevent data collision between two stations with 802.11b and 802.11g within range of the same Access Point, it is necessary to set 11B/G Protection. This setting only functions when 802.11 B/G mix is selected as Wireless Mode. Three setting are available: AUTO, EABLE and DISABLE.

This is a mechanism implemented to prevent the “Hidden Node” problem, “Hidden Note” is a situation in which two stations are within range of the same Access Point, but are not within range of each other. Therefore, they are hidden nodes for each other and can not detect each other. This mechanism is a way to prevent data collision when WLAN equipments require transmission.

TX Rate: This option adjusts settings of TX Rate according to the setting of “Infrastructure Wireless Mode”.

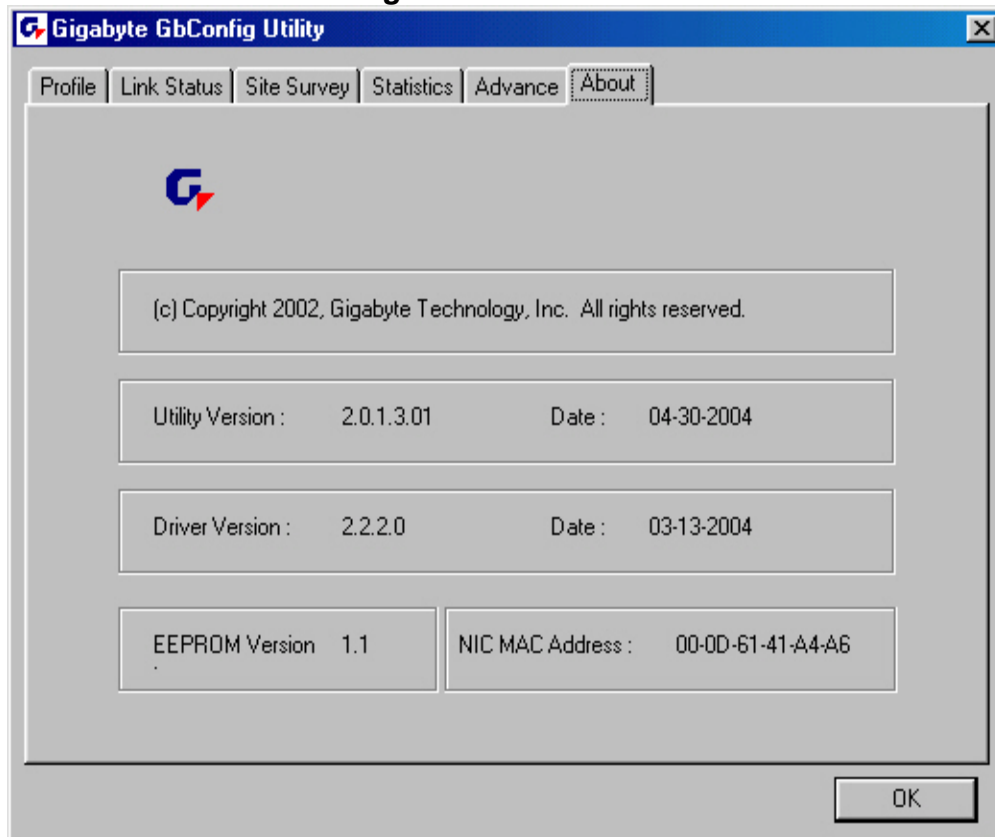
Signal Control: To turn off transferring signals, click on “Turn Off RF” icon on the bottom right corner of the screen. Click “Turn On RF” to transfer signal again.

TX Turbo rate and Use short slot time: currently does not support.

3-6. "About" Setting

"About" tab displays information about current drivers and physical MAC address (see *Figure 3-13*).

Figure 3-13. About



Chapter 4 Troubleshooting

This troubleshooting guide provides answers to some common problems which you may encounter while installing or using GIGABYTE WLAN card products. Contact the WLAN Technical Support if you encounter problems not mentioned in this section.

◆ “802.1x”, “WPA” and “WPA-PSK” can not work

- Windows XP / 2000:
 1. Run \Utility\AegisI5.exe. on the installation CD.
 2. Click “**Install**”.
- Windows 98SE / ME:
 1. Run \Utility\AegisI2.exe on the installation CD.
 2. Click “**Install**”.

◆ Cannot connect to an AP

- Make sure the SSID for the Wireless LAN Card is the same as the Access Point.
- Make sure the security settings are the same as that of Access Point. When WEP or WPA encryption is enabled, check if the WEP or WPA keys for the WLAN and AP are the same.
- Make sure if the MAC address of the WLAN card is added in the AP Authorization Table.

◆ Can connect to an AP but cannot connect to the Internet

- Make sure the security settings are the same as that of Access Point. When WEP or WPA encryption is enabled, check if the WEP or WPA keys for the WLAN and AP are the same.
- Make sure the network configuration (IP address, subnet mask, gateway, and DNS) of your computer are correct.
- Check the proxy server of the WEB browser is correctly set.

◆ Poor link quality and signal strength

- Keep the WLAN card away from microwave ovens and large metal objects to avoid radio interference.
- Keep the distance between the WLAN card and the AP as close as possible.

Chapter 5 Specification

System	
Host Interface	Mini-PCI Type III B
Chipset	Ralink MAC RT2860, Transceiver RT2820
Operating Voltages	3.3V+/-5%
Typical Power	Transmitting (Legacy mode): 700mA @ 11b, 705mA @ 11g; Transmitting (HT20 mode): 700mA; Transmitting (HT40 mode): 710mA; Receiving (Legacy mode, HT20 mode): 370mA @ 11b/g; Receiving (HT40 mode): 450mA.
RF – 802.11n (backward compatible to 802.11g & 11b)	
Frequency Band	2412 ~ 2484 MHz (subject to local regulation)
Modulation Technology	OFDM and DSSS
Modulation Techniques	64QAM, 16QAM, QPSK, BPSK, DBPSK, DQPSK, CCK
Data Rates	300, 270, 243, 216, 162, 135, 121, 108, 81, 54, 48, 36, 24, 18, 12, 11, 9, 6, 5.5, 2, 1 Mbps, auto fallback
Output power	Legacy mode: 18dBm @11b, 15dBm @11g; HT20 mode: 15dBm @MCS7/15 (65/130Mbps); HT40 mode: 15dBm @MCS7 /15(135/270Mbps).
Receive Sensitivity	Legacy mode: -90dBm @11b, -77dBm @11g; HT20 mode: -72dBm @ MCS7/15; HT40 mode: -67dBm @ MCS7/15.
Antenna Connector	Three RF connectors for antenna
Regulatory and Environmental Compliance	
EMC certification	FCC part 15 (USA)
Temperature Range	Operating: 0 ~ 55 degree C, Storage: -20 ~ 65 degree C
Humidity	10% ~ 85% Non-condensing
Software	
Driver	Windows 2000/XP/Vista
Security	64/128-bit WEP, WPA and WPA2
Quality of Service (QoS)	WMM
Roaming	Seamless roaming among 11b/g/n access points.
Management Utility	Monitors the network situation.
Mechanical	
Weight	11.0g ± 1.0g
Dimension	59.6mm*44.6mm*3.2mm ± 0.15mm
Packaging	Generic, Gigabyte, private labeling optional

※Subject to change without notices.

第十二條

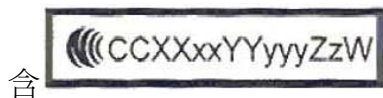
型式認證合格之低功率射頻電機，非經許可，公司、商號或使用者均不得擅自變更頻率、加大功率或變更原設計之特性及功能。

第十四條

低功率射頻電機之使用不得影響飛航安全及干擾合法通信；經發現有干擾現象時，應立即停用，並改善至無干擾時方得繼續使用。

前項合法通信，指依電信法規定作業之無線電通信。

低功率射頻電機須忍受合法通信或工業、科學及醫療用電波輻射性電機設備之干擾。



FCC Statements:

1. This device complies with Part 15 of the FCC rules. Operation is subject to the following two conditions:
 - (1) This device may not cause harmful interference, and
 - (2) This device must accept any interference received, including interference that may cause undesired operation.
2. This device and its antenna(s) must not be co-located or operating in conjunction with any other antenna or transmitter.
3. Changes or modifications to this unit not expressly approved by the party responsible for compliance could void the user authority to operate the equipment.
4. This device is for OEM installation only, the End User manual shall not contain information about how to install the module.
5. This compliance to FCC radiation exposure limits for an uncontrolled environment, and minimum of 20 cm separation between antenna and body.
6. Only the type of antenna tested may be used.
7. The end product must carry a label stating "Contains TX FCC ID:JCK-GN-WI30N-RH".

Information for OEM integrator:

The OEM integrator has to be aware not to provide information to the end user regarding how to install or remove this RF module in the users manual of the end product which integrate this module.

The users manual for OEM integrators end users must include the following information in a prominent location

IMPORTANT NOTE: To comply with FCC RF exposure compliance requirements, the antenna used for this transmitter must be installed to provide a separation distance of at least 20 cm from all persons and must not be co-located or operating in conjunction with any other antenna or transmitter.