

封面

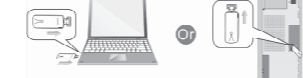
User Manual

AC1200 WiFi Dual Band USB 3.0 Adapter

Dear Customer,
Please follow the below steps to install your AC1200 WiFi USB adapter. Thanks for purchasing Patriot WiFi product!
With Best Regards!
Patriot Memory LLC

1. Hardware Installation

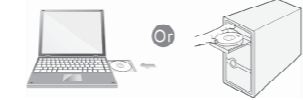
1.1 Turn on your PC, insert AC1200 to USB port of your PC.



Note: After you insert the AC1200 into USB port of your PC, in case you see the below interface, please click the Cancel button.



1.2 Insert the driver CD from the package into the CD-ROM of your PC, find the corresponding driver for the operating system of your PC.



2. Install Driver on Your PC

2.1 Important Notice: In order to successfully install the driver, please uninstall the WiFi driver of your other WiFi adapter before installing driver of AC1200. In case you

install two or more WiFi adapter drivers in one PC, it may cause conflicts between these drivers and cause the WiFi adapter fail to work. You can find the installed WiFi adapter drivers and un-install it in the Control Panel->Install and Un-Install Software.
In case your PC has integrated WiFi adapter, please also turn it off before installing driver for AC1200. Otherwise, you will not know which WiFi adapter is working for you and these WiFi adapters may cause conflict with each other.

Below are steps for installing AC1200 driver on your Windows PC:

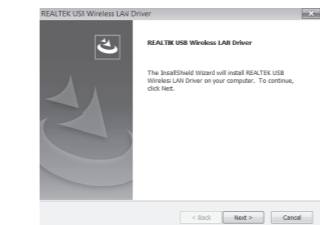
2.2 In the CD, please find the correct driver for your operating system, open the folder to find and double click this Setup button.

2.3 Please follow the on-screen instruction to finish the installation of driver.

2.3.1 In the below interface, please wait, please do NOT click the "Cancel" button; otherwise, installation will stop.

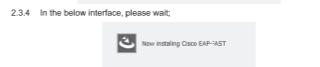


2.3.2 In the below interface, please click "Next" button to continue with the installation.

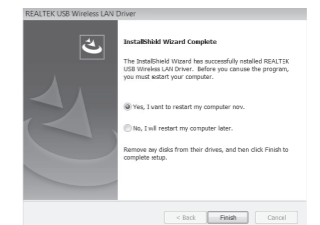


2.3.3 In the below interface, please wait.

2.3.4 In the below interface, please wait.



2.3.5 In the below interface, please select "Yes, I want to restart my computer now" and then click the "Finish" button to restart your computer. When your computer is turned on again, the driver will be installed on your computer successfully and you can start to use AC1200.



3. Connect to Your WiFi Broadband Network

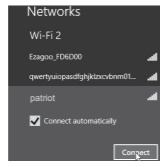
You can manage your AC1200 and connect it to your WiFi broadband network by using the Windows Integrated WiFi network management tool. And for Windows OS versions of Windows 8/10/Vista/XP, you can also use the AC1200 integrated Realtek WiFi Management tool to manage your WiFi network.

3.1 Use Windows Integrated WiFi Network Management to Connect your AC1200 to your WiFi Network. We here take Windows 8 as example.

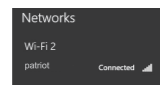
3.1.1 Click the icon on the bottom right corner of your desktop.



3.1.2 Select your wireless network from the list, click Connect and then follow on-screen instructions. You need to input your WiFi key to connect to your WiFi network.



3.1.3 When your wireless network is connected successfully, the following screen will appear.



3.1.4 Note:

3.1.4.1 If you cannot find the icon, please move your mouse to the top right corner of your desktop, select Settings->Control Panel->Network and Internet->Network and Sharing Center->Change Adapter Settings, right click Wi-Fi and select Connect/Disconnect.

3.1.4.2 If you cannot find your wireless network from the list, please make sure that your PC is not under Airplane mode as Airplane mode disables your Wi-Fi function.

3.1.4.3 If the Wi-Fi network which you connect to does not have the Internet access, then you will get a Restricted status and a yellow exclamation mark will appear in the wireless icon in your system tray (lower-right corner).

3.1.4.4 If you are using Windows XP and cannot find its wireless management function, please make sure that you have enabled its wireless management function which is called Wireless Zero Configuration services on your XP.

3.2 Use AC1200 WiFi Management tool to Connect your AC1200 to your WiFi Network

3.2.1.1 You can also use the "Realtek 11n USB Wireless LAN Utility" to manage AC1200 and connect it to your WiFi network.

3.2.1.2 Please double click the icon of Realtek to open the software, follow the on-screen instruction to Search your WiFi network, Input the WiFi Key (WiFi Password), and then Connect to the WiFi Network.

3.2.1.3 Once you are connected to the WiFi network successfully, your information for this network will be stored in this software, you can find it in "Profile". Every time when you turn on your PC, AC1200 will connect to your WiFi network automatically with these information stored. In case you connect to more than one WiFi networks successfully, you can choose the corresponding Profile of them in this software.

4. FAQ (Frequently Asked Questions)

4.1 Ask: I plug an AC1200 to the USB port of my PC and it does not work. What shall I do?

Answer: One of the below may cause the AC1200 fail to work, please check and try one or more of the below solutions:

4.1.1 Please try another USB port of your PC.

4.1.2 Please make sure that you have installed the driver on your PC. This adapter support the below Operating Systems, you need to install the correct driver for it:
-Windows: Win10 32/64, Win8.1 32/64, Win8 32/64, Vista 32/64, XP 32/64
-MAC OS X
-Linux

4.1.3 Please make sure that you are not installing more than one WiFi adapter drivers in one PC. This will cause AC1200 fail to work though you have installed driver for it. Please remove all other WiFi adapters drivers before installing driver for AC1200. You can find more about this in Part 2.1.

4.1.4 Please make sure that you did not Disable AC1200 in the Network configuration of your PC. You need to make sure that it is Enabled. You can check this on your PC as below: Network->Properties->On the left hand side of the menu, click "Change Adapter Settings" ->Find AC1200 WiFi adapter under the name of "Realtek 8812AU Wireless LAN 802.11ac USB NIC", put your mouse on it and click the right button of your mouse-> Press Enable to turn AC1200 ON. Press Disable to turn AC1200 OFF and it does not work.

4.1.5 In case the LED of AC1200 is on, this indicates that the driver is installed on your PC. You need to refer to the solution in Part 4.1.3 and Part 4.1.4

4.1.6 In case the LED of AC1200 is NOT ON, this indicates that the driver is NOT installed correctly on your PC or adapter is not plug correctly on your PC. You need to refer to the solutions in Part 4.1.1, Part 4.1.2 and Part 4.1.3.

4.2 Ask: How to get better WiFi signal?

Answer: Here are some hints for you:

4.2.1 If you are using AC1200 on your desktop, please plug it into the USB port in the front of your PC instead of the USB port on the rear part of your PC, because the USB port in the front of your PC has more open area.

4.2.2 The WiFi network performance depends on the actual environment in your office or at home, the walls and doors with metal, a working microwave oven or ceramics will lower your WiFi speed or signal; if possible, please keep away your WiFi router and PC away from them.

4.2.3 If you are using an AC WiFi router or dual band WiFi router, you must need to know:

4.2.3.1 5GHz band has much faster WiFi speed than 2.4GHz band because 5GHz band is less crowded and it is cleaner, while 5GHz is not good at penetrating walls, also not good at long range transmission.

4.2.3.2 The speed of 2.4GHz WiFi band is not as fast as that of 5GHz, while 2.4GHz is much stronger than 5GHz in penetrating walls and long range transmission.

4.2.3.3 So you can use AC1200 to choose the best WiFi band for your application based on the actual environment of your office or home. You can shift between 5GHz or 2.4GHz.

4.3 Ask: Can I use a USB extension cable to extend my AC1 WiFi USB adapter to get better WiFi signal?

Answer: Yes, you can do this to get better WiFi signal. In order to work properly, AC1200 needs to have enough power supply from USB port of your PC. The longer USB extension cable you are using, the more power you will get lost on the USB cable. In case your USB extension cable is too long, it will cause AC1200 fail to work because of the lack of enough power supply. And the power lost on USB extension also depends on the quality of your USB cable, so we suggest using USB extension cable of shorter length or with higher quality.

4.4 Ask: What is the most secure WiFi encryption method to protect my WiFi network?

Answer: This AC1200 supports all the WiFi encryption method, it can auto match the encryption method of your WiFi network. You need to configure your encryption method in your WiFi router, the most secure one is WPA2, then WPA. We do not recommend using WEP. It is not safe though it is encrypted. Also, you can choose the encryption algorithm, the best one is AES. We do not suggest using TKIP, though TKIP is secured, while it lowers your network speed. So WPA2-AES (also called WPA2-PSK) is the best one, it is most secure, while also offer optimal WiFi network speed.

4.5 Ask: Does AC1200 support working under software AP mode as a WiFi hotspot?

Answer: Yes, it supports, while for operating systems of Windows 8/10/Vista only, NOT for Windows 10. After you install the driver of AC1200, you can open the software of Realtek 11n USB Wireless LAN Utility, in the button of "Working Modes", you can shift between WiFi Adapter (client) mode and Software AP (Station) Mode, please note that it supports working under only one mode at the same time. In order to have your PC and AC1200 work as SoftAP, your PC needs to be connected to the Internet successfully via its Ethernet port by Ethernet cable.

FCC WARNING

This device complies with part 15 of the FCC Rules. Operation is subject to the following two conditions: (1) this device may not cause harmful interference, and (2) this device must accept any interference received, including interference that may cause undesired operation.

Any changes or modifications not expressly approved by the party responsible for compliance could void the user's authority to operate the equipment.

NOTE: This equipment has been tested and found to comply with the limits for a Class B digital device, pursuant to Part 15 of the FCC Rules. These limits are designed to provide reasonable protection against harmful interference in a residential installation. This equipment generates, uses and can radiate radio frequency energy and, if not installed and used in accordance with the instructions, may cause harmful interference to radio communications. However, there is no guarantee that interference will not occur in a particular installation.

If this equipment does cause harmful interference to radio or television reception, which can be determined by turning the equipment off and on, the user is encouraged to try to correct the interference by one or more of the following measures:

- Reorient or relocate the receiving antenna.
- Increase the separation between the equipment and receiver.
- Connect the equipment into an outlet on a circuit different from that to which the receiver is connected.
- Consult the dealer or an experienced radio/TV technician for help.

To maintain compliance with FCC's RF Exposure guidelines, this equipment should be installed and operated with minimum distance between 20cm the radiator your body. Use only the supplied antenna.

FCC ID: Z4EW-AC1200

NOTES(技术要求):
1.Dimension after folding(折叠后尺寸): 65*90mm.
2.Print colour(印刷颜色): black printing(黑色印刷).
3.Material(材质): 70g writing paper (70g书纸).
4.Coating(表面处理): 无7.
5.Binding process(装订工艺): Paper folding(折页)——风琴折.
6.Output lpi(输出网线): 200 lpi.
7.Tolerance(公差): L(长)*W(宽):±1mm.
8.Raw materials and the corresponding post processing should meet requirements defined in the ROHS and WEEE.
(原材料及后处理工艺均能满足ROHS和WEEE的要求).

DIM	TOL±				
RANGE	C1	C2	C3	C4	
0~6	0.1	0.1	0.15	0.2	
6~30	0.2	0.3	0.4	0.5	
30~80	0.25	0.5	0.9	1.2	
80~180	0.3	0.8	1.2	1.5	
180~315	0.5	1.3	1.8	3	
315~500	0.7	1.5	2.5	4	
500~800	0.9	1.8	3	5	
ANG.TOL±	0°~30°/0.1°	30°~60°/0.3°	60°~90°/0.5°		

CUSTOMER: Patriot		深圳市迈腾电子有限公司 www.mtncn.com SHENZHEN MTN ELECTRONICS CO.,LTD			
TITLE: MANUAL		MODEL: MT-WN853N		PART NO.: 17.P6.2E102PT02	
UNIT'S	mm	VER:	A0	DRAW	饶鸿
MAT'L	/	SCALE	1:1	CHECK	张琴
FINISH	/	SHEET	1/1	APPD	N/A
		DATE:2017-03-06			