

# SYLVANIA

## QUICK START GUIDE

### NETBOOK

Wireless Mobile Internet Device



SYNET07526-R

Note this is a mobile internet device that uses Windows CE as its operating system. The WebPages may look different than you are commonly used to seeing as these are mobile WebPages. There may be some web pages that can not be opened. This device will not support some versions of Flash.

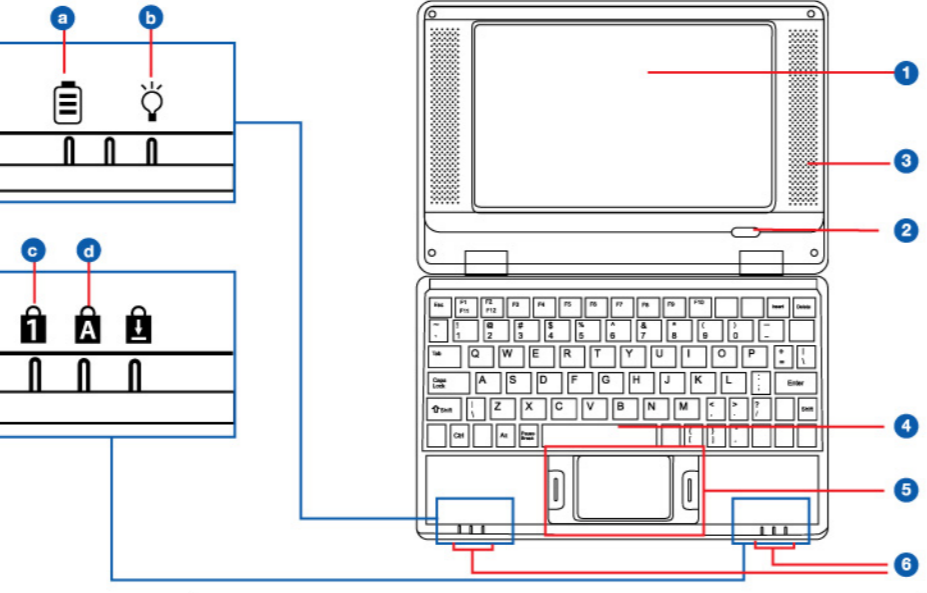
If you are experiencing problems with your product, please contact customer support before contacting your retailer.

Call 888-571-0866  
or email: dgsupport@digitalgadgets.com



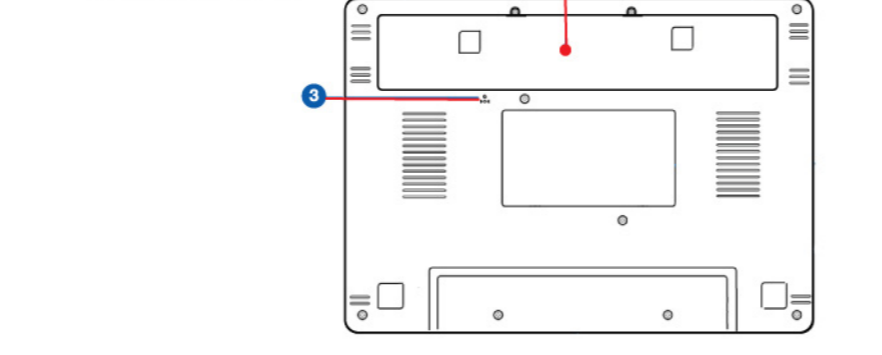
### 1.1 Getting to know your Netbook

Congratulations on the purchase of your new Netbook!



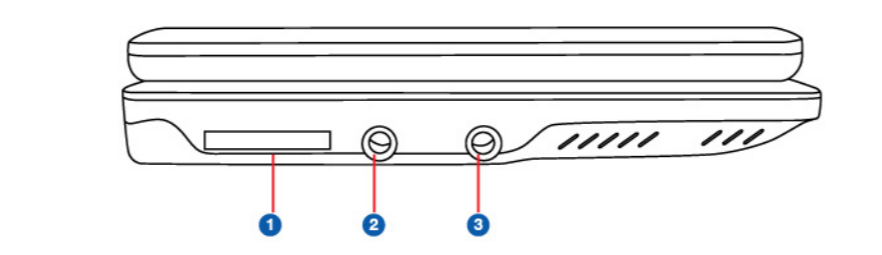
No.	Item	Description
1.	LCD screen	7" LCD screen display.
2.	Power On/Off button	Press the power button to start up the Netbook. The power button will also recover the Netbook from standby status.
3.	Speakers	These produce the sound for the Netbook.
4.	Keyboard	Input Device used for Controlling the Netbook's various functions.
5.	Touch pad and button	Works the same way as a mouse and is used for controlling the cursor. The buttons work the same way as a left and right mouse buttons.
6.	Status Indicator (from left to right)	a) Battery charge indication lamp: A red colored light indicates the battery is being charged. When the battery is fully charged the light will turn off. b) Power indication lamp: When your netbook is in use, the power indication lamp will be bright green. c) Num Lock indication lamp: When the green lamp is on, it indicates that the digital keys of the keyboard are activated and ready for use. When the light is off, it means that the Num Lock application is not on. Press the Num Lock key to turn on this function. Press it again to turn it off. d) Caps Lock indication lamp: When the green light is on, it indicates the Caps Lock function on the keyboard is activated. After activating the button, all the letters typed will be capitalized.

### BOTTOM VIEW



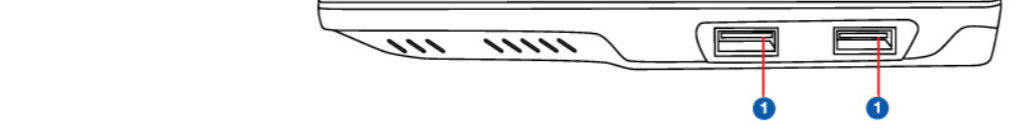
No.	Item	Description
1.	Battery Lock	The manual battery lock is used to protect battery pack.
2.	Battery Pack	The battery pack will charge automatically after connecting with a power supply. The battery pack cannot be detached.
3.	Recovery	In the event your netbook cannot normally shut down or restart, press this button with a pin or straight paper clip to restart the netbook.

### SIDE



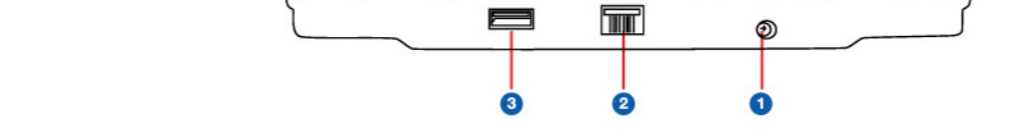
No.	Item	Description
1.	Storage card slot	The card reader in the netbook can read SD/MMC cards from devices such as digital cameras, MP3 players, mobile phones and PDAs.
2.	Headphone output jack	For connecting to external speakers or headphones. The built-in speakers in the netbook will stop playing automatically after inserting headphones into the jack.
3.	Microphone jack	Connect to the external microphone

### SIDE



No.	Item	Description
1.	USB port (2.0)	2 USB ports can be used to connect USB memory, mice and other equipment.

### BACK VIEW



No.	Item	Description
1.	Power jack	This port connects the AC power adaptor.
2.	Network interface	The Ethernet (RJ-45) network interface supports standard Ethernet wires (CAT5, CAT5e, etc.) to connect to local networks.
3.	USB port (2.0)	Connect to USB equipment.

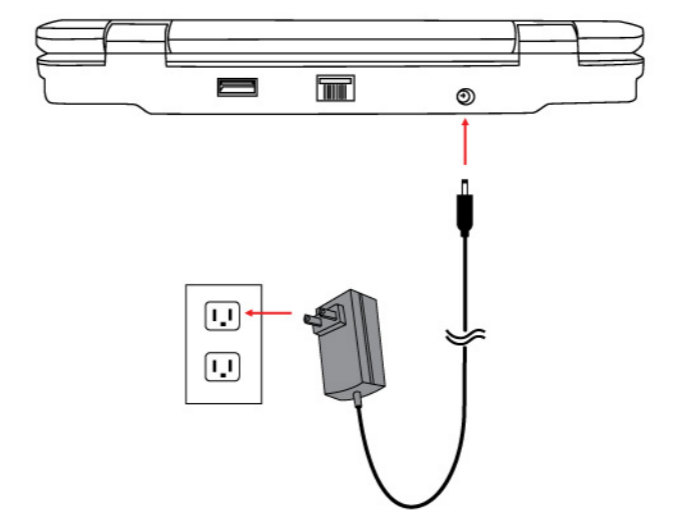
### SHORT-CUT KEYS

No.	Short-cut	Function	Remark
1.	F4	IE browser	Internet Explorer
2.	F6	Backlight -	Back light fades down
3.	F7	Backlight +	Backlight fades up
4.	F9	Wifi switch	Starting Wifi
5.	Fh+F11	Volume -	Volume decrease
6.	Fh+F12	Volume +	Volume increase

### Charging Your Netbook

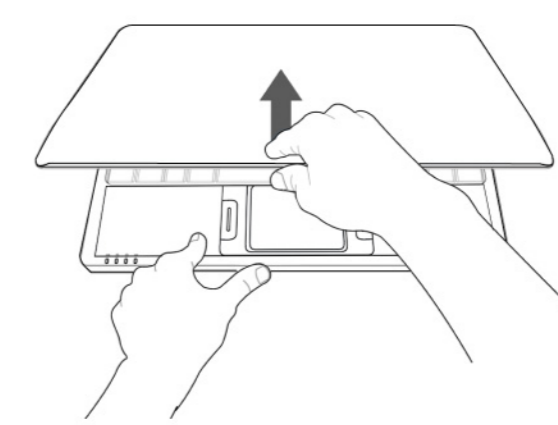
Your Netbook comes with an AC power adaptor. Before using this Netbook, the battery will need to be fully charged. To maximize the battery life, the first charge must be a full charge. It is our recommendation that you charge the netbook for 12 hours before use in order to achieve a full charge.

1. Plug the AC plug of your adaptor into an outlet.
2. Plug the power adaptor plug into your Netbook's power adaptor port on the back of your netbook as shown below.
3. Your netbook will automatically charge.
4. The adaptor with ferrite bead attached. It is marketed together with the netbook.



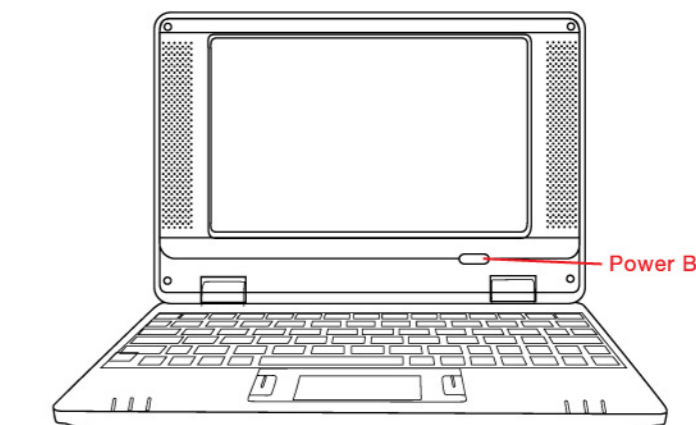
### Setting Up Your Computer

III. Startup  
STEP 1: Open the screen of your Netbook.



• Press the power button to start up the netbook and wait for it to load the desktop.

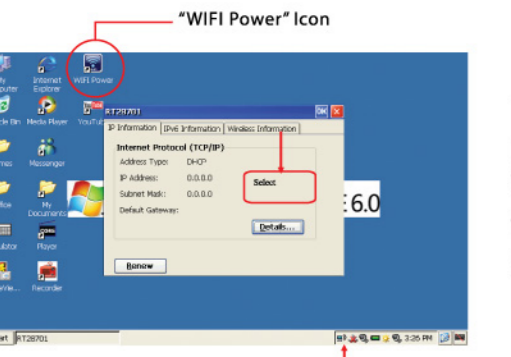
STEP 2: Turn on the machine by pressing the Power Button.



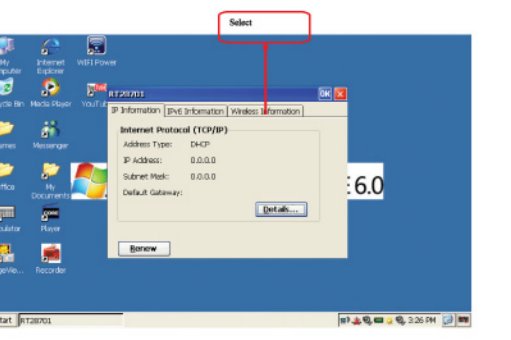
### Wireless Network

Note this is a mobile internet device that uses Windows CE as its operating system. The WebPages may look different than you are commonly used to seeing as these are mobile WebPages. There may be some web pages that can not be opened. This device will not support some versions of Flash.

• Make sure your wireless card is on by checking the status indicator light in the lower right corner of your netbook. If it is not on, press F9 key to activate the card. Or double click the "wifi power" icon as shown below and press "on".

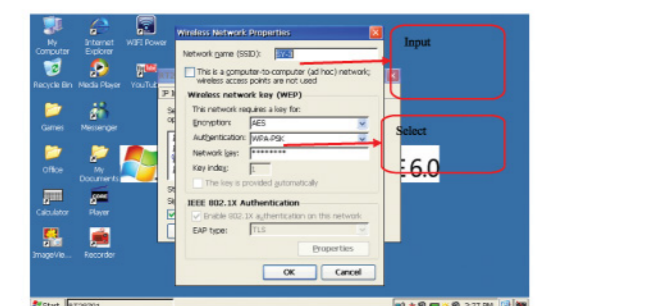


1. WIFI settings: click the WIFI icon on the lower right side of WINDOWS CE desktop as the figure illustrates below. The below window will be pop up.



2. Select "Wireless Information"

### Wireless Network Continued



3. The computer will search for wireless networks automatically. Please select (double click) the wireless network you would like to join. The "Wireless Network Properties" window will pop up. Please input your network credentials here and press "OK" when finished.

\*\*If the WIFI network needs a password, please consult the network manager or your Internet Service Provider (ISP).

### Shut Down



Click the "Start" icon in the lower left side of the desktop and a menu will appear that allows you to select "Shutdown"

• **Emergency Shutdown**  
When the netbook cannot be shutdown normally, please press and hold the Power Button until the netbook turns off

• **Reset**  
If the system appears "Frozen", use a paper clip or similar object to press the reset button located in the hole near the battery cover and then the system will restart automatically

### 4. Icon indicating Wireless connection



• After you connect to the Internet double-click the Internet Explorer icon on the desktop to access webpages.

### Wired Connection

**Step 1:** Plug in Ethernet cable  
**Step 2:** Contact your Internet Service Provider to obtain your settings



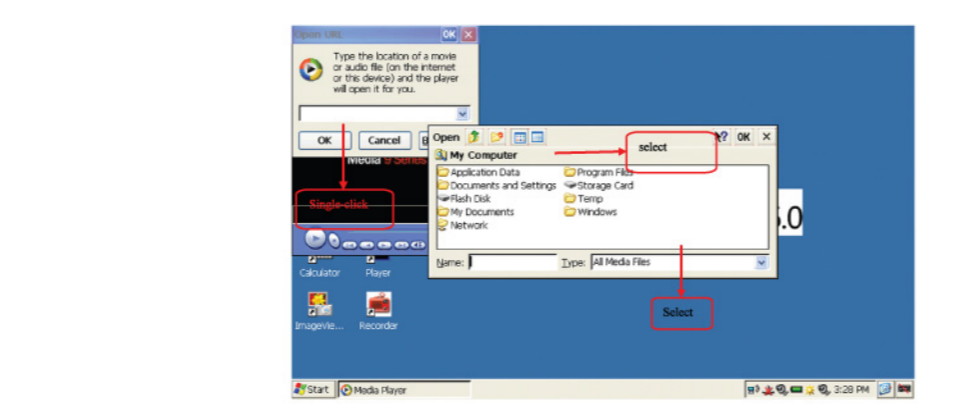
**Note:** When the wired network is used, the wireless network must be closed or dynamic IP mode should be initially set to connect to the network, otherwise a conflict may occur resulting in network connection failure. When the wireless network is used, the same setting should be conducted.

### Media Player: Play Video

1. Double-click the Media Player icon on the desktop and the dialogue box illustrated below will pop up:



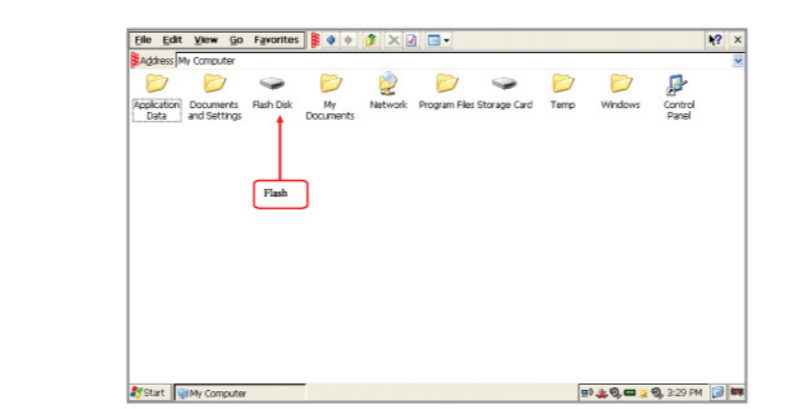
2. Select File in the menu to open the files you want to play, as illustrated below "(when selecting the file, only "All Files" will display all of the files)"



Click "OK" and the video file will begin to play. The icon in the menu will play in full screen. Press ESC key to exit full screen. It supports video with 720X480 pixels.

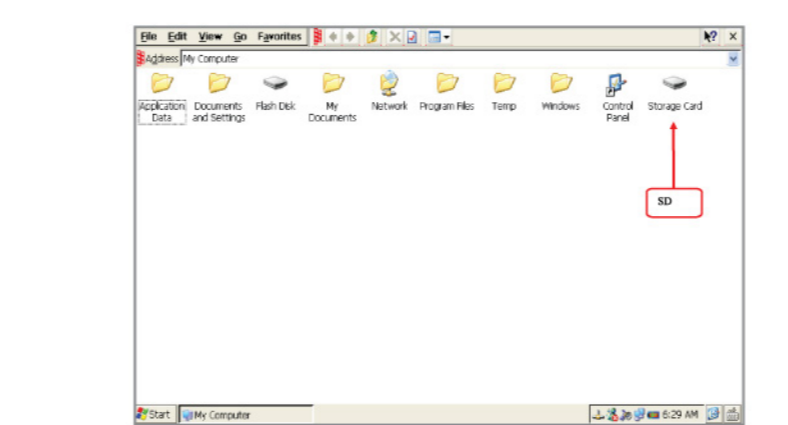
### Built-in Storage

• Open my computer and enter source manager. You can see that a file belongs to "Flash Disk" disk symbol which is a built-in Flash and used for storage. Here is the built-in storage of this system.



### SD Card

• After inserting a SD card, the disk symbol of it can be seen in the source manager. Double-click "Storage Card" to browse the files in the SD card.



### Notes

1. Points for attention  
1) The software of this system is consistently being upgraded. Thus, the desktop icons showed in this Quick Start Guide may differ with the desktop icons of this product.  
2) This product is a "Mobile Internet Device" with Windows CE 6.0 operating system. It is not the same as Windows XP, Vista or 7. The main advantages of this Netbook are: "low power consumption", "small volume" and "light weight". Please never measure it with the function of Windows XP, Vista or 7.

About Windows CE  
It is a great operating system for users who are looking to surf the web and email. It is convenient for accessing your favorite social networking sites.  
Please be careful when using intensive programs and applications. Some limitations users may experience are:  
\* Hooking up to your Printer- Windows CE was designed for portable units. The programming will only work with portable printers. It is better to transfer or email files to another computer for printing.  
\* Difficulty opening large PDF files. (it is better to save the files to your computer and open afterwards).  
\* Difficulty downloading large files. Windows CE accept all downloads as some downloads may be too large. Please check all software minimum requirements before downloading.

### FCC NOTES

FCC NOTES  
Warning: Changes or modifications to this unit not expressly approved by the party responsible for compliance could void the user's authority to operate the equipment.

NOTE: This equipment has been tested and found to comply with the limits for a Class B digital device, pursuant to Part 15 of the FCC Rules. These limits are designed to provide reasonable protection against harmful interference in a residential installation. This equipment generates, uses and can radiate radio frequency energy and, if not installed and used in accordance with the instructions, may cause harmful interference to radio communications.

However, there is no guarantee that interference will not occur in a particular installation. If this equipment does cause harmful interference to radio or television reception, which can be determined by turning the equipment off and on, the user is encouraged to try to correct the interference by one or more of the following measures:

- Reorient or relocate the receiving antenna.
- Increase the separation between the equipment and receiver.
- Connect the equipment into an outlet on a circuit different from that to which the receiver is connected.
- Consult the dealer or an experienced radio/TV technician for help.

### Product Specifications

<b>Processor</b>	VIA 8505
<b>RAM</b>	128MB
<b>Screen</b>	7" High resolution TFT screen
<b>Resolution</b>	800 x 480 pixels
<b>Main Storage</b>	SD card slot
<b>WLAN</b>	WiFi 802.11 b/g
<b>Ethernet</b>	RJ-45
<b>Audio</b>	Stereo Speakers, Earphone Jack
<b>Microphone</b>	Microphone jack
<b>USB Ports</b>	3 USB Ports
<b>Windows OS</b>	Win CE 6.0
<b>Battery Capacity</b>	8.4 V 1800mAh built in Lithium battery
<b>Weight</b>	2 lbs.

\* Requires Internet service and wireless modem or hotspot to connect to the Internet.