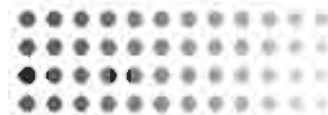




Digital Photo Frame
Sungale



*Digital Photo Frame
User's Manual*



LIMITED WARRANTY

The limited warranty set forth below is given by the manufacturer with respect to Sungale brand DPF players and other consumer electronics products purchased and used in the United States of America. The manufacturer warrants this product against defects in material or workmanship as follows:

LABOR: For a period of ninety (90) days from the date of purchase if this Product is defective, the manufacturer will repair or replace the Product, at its option, at no charge. After this ninety (90) days period up to one year, a labor charge of US\$30.00 will be charged for each service.

PARTS: For a period of one year from the date of purchase, the manufacturer will supply, at no charge, new or rebuilt replacement parts in exchange for defective parts. After this one year period, the manufacturer will charge the new or replacement parts.

This warranty does not cover: (1) customer instruction, installation or set up; (2) cosmetic damage or damage due to accident, misuse, abuse, or negligence; (3) commercial use of the Product; (4) modification of any part of the Product; (5) damage due to improper operation, improper maintenance, or connection to an improper voltage supply; (6) damage due to an attempted repair of the Product by anyone other than a facility authorized by the manufacturer to service the Product; (7) consumables (such as fuses and batteries). This warranty is valid only in the United States.

The product must be accompanied by a copy of the original retail purchase receipt. If no proof of purchase is attached, the warranty will not be honored and repair cost will be charged.

This warranty is valid with attach written documentation detailing the complaint to the outside or inside of the carton.

This warranty is invalid if the factory applied serial number has been altered or removed from the Product.

The manufacturer reserves the right to modify any design of this product without prior notice.

To obtain warranty service, you must deliver the product freight prepaid, in either its original packaging or packaging affording an equal degree of protection, plus proof of purchase, to:

Service Center
13941 Central Ave.
Chino, CA 91710
Tel: 800-473-5156

REPAIR OR REPLACEMENT AS PROVIDED UNDER THIS WARRANTY IS THE EXCLUSIVE REMEDY OF THE CONSUMER. THE SERVICE CENTER SHALL NOT BE LIABLE FOR ANY INCIDENTAL OR CONSEQUENTIAL DAMAGES FOR BREACH OF ANY EXPRESS OR IMPLIED WARRANTY ON THIS PRODUCT. EXCEPT TO THE EXTENT PROHIBITED BY APPLICABLE LAW, ANY IMPLIED WARRANTY OF MERCHANTABILITY OR FITNESS FOR A PARTICULAR PURPOSE ON THIS PRODUCT IS LIMITED IN DURATION TO THE DURATION OF THIS WARRANTY.

Some states do not allow the exclusion or limitation of incidental or consequential damages, or allow limitations on how long an implied warranty lasts, so the above limitations or exclusions may not apply to you. This warranty gives you specific legal rights, and you may have other rights which vary from state to state.

User Notice

This product has met electronic emissions standards required. It can be used safely at home.



Contents

Before Operation

Product Introduction	2
Safety Precautions	3
Package Contents	5
Photo Frame Overview	6

Basic Operation

Power Connection	7
Insert a kind of memory card	8
Select a kind of storage	9
Photos	10
Music	11
Movie	12
E-Book	13
Calendar&Clock	14
Edit files	16

Advanced Operation

Settings	17
Network setting	20
IP Radio	23
Picasa	24
Weather	25
News	26
Gmail	27
Stock	28
YouTube	29
Connect PC	31

Customer Management

Question&Answer	32
Troubleshooting	33
Specifications	34

Before Operation

Product Introduction

Our Digital Photo Frame is a convenient image frame that keeps your favorite images at your fingertips.

Wi-Fi DPF means the digital photo frame can be connected to internet wirelessly, then, you can enjoy and share the endless resources from the internet.

with many various added functions such as, weather report, IP Radio, News, YouTube, Stock Gmail etc, you will achieve much more fun and convenience from the product.

Moreover, its touch screen operation makes it is a unique products distinguish it from any other products.

You can use the Digital Photo Frame to enjoy memories by presenting them with refined images.

FCC and Safety Information

• FCC Part 15.19

This device complies with Part 15 of the FCC Rules .Operation is subject to the following two conditions: (1) this device may not cause harmful interference , and (2) this device must accept any interference received ,including interference that may cause undesired operation .

• FCC part 15.21

Warning: Changes or modifications to this unit not expressly approved by the party responsible for compliance could void the user's authority to operate the equipment.

• FCC part 15.105

Note : This equipment has been tested and found to comply with the limits for a Class B digital device ,pursuant to Part 15 of the FCC Rules, These limits are designed to provide reasonable protection against harmful interference in a residential installation .This equipment generates, uses, and can radiate radio frequency energy and ,if not installed and used in accordance with the instructions, may cause harmful interference will not occur in a particular installation .If this equipment does cause harmful interference to radio or television reception ,which can be determined by turning the equipment off and on ,the user is encouraged to correct the interference by one or more of the following measures:

- Reorient or relocate the receiving antenna.
- Increase the separation between the equipment and receiver.
- Connect the equipment into an outlet on circuit different form that to which the receiver is connected.
- Consult the dealer or an experienced radio TV technician for help.

FCC Radiation Exposure Statement

To comply with FCC RF exposure compliance requirements, a separation distance of at least 20 cm must be maintained between the antenna of this device and nearby persons. This device must not be co-located or operating in conjunction with any other antenna or transmitter

Customer Management

Specifications

Display: 8" TFT LCD 800(RGB) X 600 (4:3)

Internal memory: 512MB

Power: AC Adapter; Input 100-240V; Output 5V, 2A

Environmental operating range

Operation: 32-95 F, Humidity 0-85%

Storage: -4-140 F, Humidity 10-90%

Accessories:

Power Adapter

User's Manual

Quick Start Guide

USB Cable

Cleaning Pad

Note: All data are provided for reference purposes only. Sungale reserves the right to make any changes without prior notice.

Customer support home page

The latest support information is available at the following home page address:

[Http://www.sungalewifi.com](http://www.sungalewifi.com)

Take a moment now to visit the web site

You may receive product updates and other valuable information from the service supplier that can improve your experience with our product.

Note: This device is to be recommended to use with your home wireless router or independent office wireless router. For complex office wireless surrounding, please ask your web manager to give assistance to link to the internet.

Before Operations

Safety Precautions

Please read the following guidelines carefully to ensure user safety.

Power Precautions

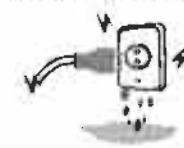
⚠ WARNING: indicates information that, if neglected, could result in serious injury and/or death to the user.

⚠ CAUTION: indicates information that, if neglected, could result injury to the user and/or material damage.

01. Use only the power supply included with your frame. Failure to do so may result in product malfunction.



02. When connecting your power source, make sure that your hands are free of moisture. Failure to do so could result in electrical shock.



03. Make sure that the power supply is firmly plugged in and not loose. Failure to do so could result in electrical shock.



04. Do not let the power cord get overly entangled and do not place any heavy objects on the cord. Failure to do so could result in electrical shock.



05. Do not connect the power supply to an electrical power strip with other various. Failure to do so could result in fire.



06. Disconnect the power supply during inclement weather conditions that include thunder and lightning. Failure to do so may result in fire.



Before Operations

Safety Precautions

Please read the following guidelines carefully to ensure user safety and avoid malfunction.

Product Related Precautions

01. Dropping the product or subjecting it to a significant impact can cause critical damage.



02. Spilling water or any other liquid on the product can cause critical damage.



03. Striking or scratching the LCD screen may cause critical damage.



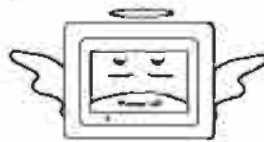
04. When cleaning the LCD screen, turn off the power and wipe it gently with a soft cloth.



05. Do not subject the product to severe humidity and/or heat.



06. Make sure to power off the unit before disconnecting the power supply.



Customer Management

Troubleshooting

Some simple checks or a minor adjustment eliminate common problems:

No power

1. Check the power button is on.
2. Check the power outlet is operational.
3. Check the power cord for damages
4. Check the power plug is firmly connected to photo frame.

Can not read the card

1. Check the card for damages.
2. Check the card is connected the photo frame correctly
3. Pull out the card, and then insert again.

Photo Frame is not working

Turn off the power, and then turn it on again.

Customer Management

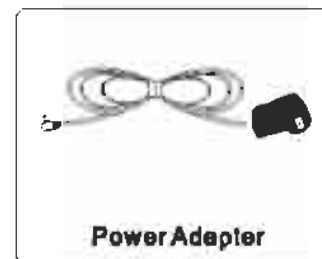
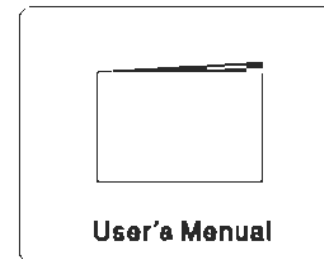
Question&Answer

Question	Answer
What photo formats are supported by the Photo Frame?	Photo: JPG, BMP, PNG, TIFF
Why player does not display picture quickly after inserting memory card?	If your picture is high quality, please wait a minute. Or switch your picture by using the A&S&P tool.
Can I insert multiple memory cards?	Yes, you can insert one of SD, MMC, MS, XD and CF at the same time.
Why picture does not cover the entire screen?	The picture whose rate is 4:3 and resolution is 800(RGB)x600 or higher than 800(RGB)x600 can cover the entire screen.
What is the best Picture resolution displayed on the screen?	The frame's best resolution is 800(RGB)x600.
Why won't it advance to next picture?	<ol style="list-style-type: none"> 1. There is only one picture in the frame. 2. You are viewing high-resolution pictures in the card, High-resolution pictures can take some time to display. Please switch your picture by A&S&P tool, if you want to display the picture quickly. 3. The frame is in step show mode, please touch the SLIDESHOW item on the screen to enter into slideshow mode. 4. The next picture has been corrupted.
Why Digital Photo Frame does not read E-Book?	The frame only can read the eml format TXT file.
Why the touch panel does not work?	Please see the screen calibration of the SETTINGS.

Before Operations

Package Contents

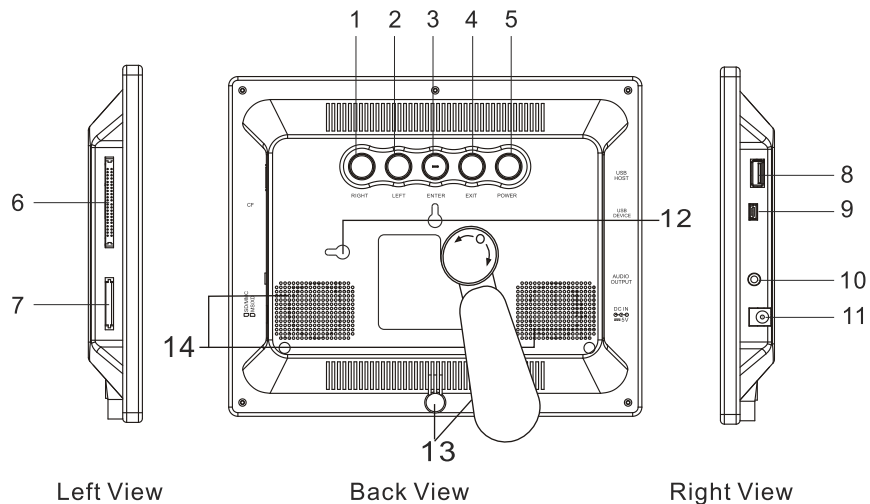
For the improvement of product performance and/or quality, the basic components may be modified without prior notice. The components may differ slightly in appearance with the provided images.



Before Operations

Photo Frame Overview

The package contents may differ slightly in appearance with the provided images



1. **RIGHT:** Move the cursor to right or down
2. **LEFT:** Move the cursor to left or up
3. **ENTER:** Enter into the selected menu or start playing the selected file.
4. **EXIT:** Stop the current action and return to the previous menu.
5. **POWER:** Turn the player off and on .
6. **CF CARD SLOT:** Insert CF card here.
7. **MS/SD/MMC/XD CARD SLOT:** Insert supported memory card types here.
8. **USB HOST :** Connect the USB cable from the DPF player to USB removable storage device / Mobile hard disk.
9. **USB DEVICE:** Connect the photo frame to PC
10. Audio output.
11. **DC IN :** Insert the DC power adapter to the frame.
12. Wall mountable hole.
13. **Stand:** Using the stand provided you can position the photo frame with horizontal or vertical view.
14. **Speaker:** Built in stereo speakers.

Advanced Operations

Connect PC

Use the supplied USB cable to connect your DPF to your PC. The screen will display as below:



Note: Don't use any other functions when connect the DPF to the PC except file management by means of the PC.

Start ASSP

Note: The ASSP is a software developed by Sungale to manage the files in the Internal Memory to optimize the utilization of the source of the memory.

On your computer, click "My computer", then, click "StorageDevice Disk", then, double click Fileconverter.exe, you will enter into ASSP interface.

- Tip :1. If your PC has set as auto-run, you will enter into the ASSP interface directly, no operation needed.
2. The PC installed the anti-virus software or other hold-up software will make the "autorun.inf" invalid. In this situation, the file is set as hidden file. If you want to autorun the ASSP, you can set your PC to display hidden files.

Use ASSP

1. Click "AddFile", your computer's files and folders will appear, double click the file or photo to add them to your DPF.
2. Hold on "Shift" or "Ctrl", you can download multi files or photos to your DPF.

In this way, the photos downloaded will be stored at 800X600 to suit your DPF's screen and the MP3 files will be transferred into WMA file.

When you finish the operation, safely remove the USB cable from your PC.

The unit will return to the main menu automatically.

Tip: You also can take the DPF as a regular storage device, select the photos from your computer, then paste them in the DPF's internal memory. In this way, the photos will be stored without compression. If you want to optimize your internal memory, you can select the photos, then click the "Convert".

Attention: Once you format the internal memory of your DPF, the ASSP software will be deleted.


In this situation, you can still use the DPF as a regular storage device, and copy, paste, delete files after connecting your DPF to the PC,



Advanced Operations

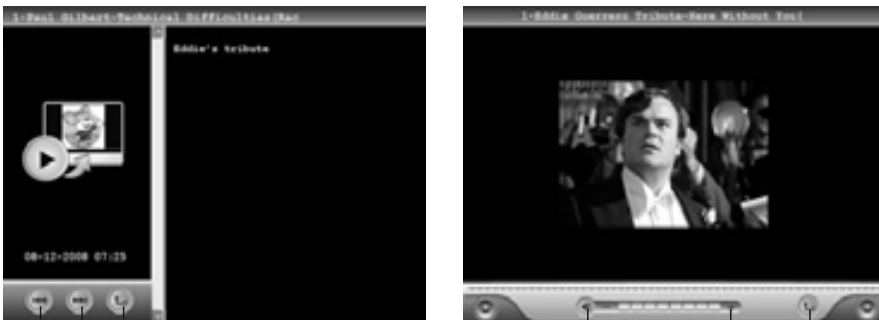
YOUTUBE

Tips: If you have registered in the YouTube website, you can touch the "My YouTube" icon to input your user name and enter into the video download screen, then display your own videos.



ICONS	MEANING
1	Exit and return to the previous menu
2	Enter button
3	Backspace key
4	Caps lock key
5	Space bar

After download, enter the summarize interface of video, touch the Play icon on the left side to play the video.

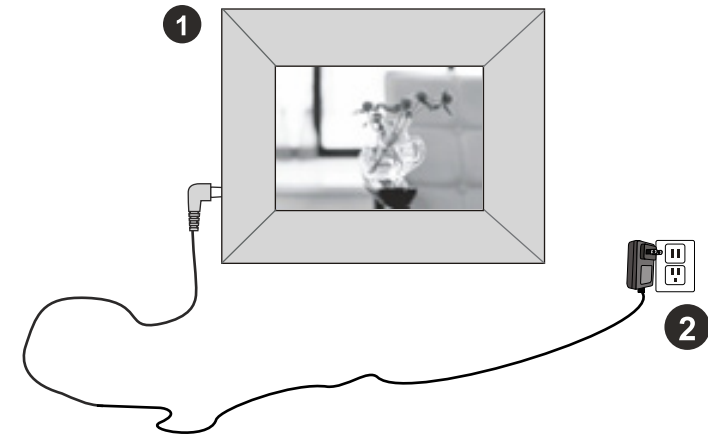


ICONS	MEANING
1	Skip to the previous summarize.
2	Skip to the next summarize.
3	Exit

ICONS	MEANING
1	Decrease the volume.
2	Increase the volume.
3	Exit

Basic Operations

Power Connection



1. Connect the power adaptor to the DC 5V jack on the left side of the frame.
2. Plug in the power cord.
3. The frame will automatically power on.

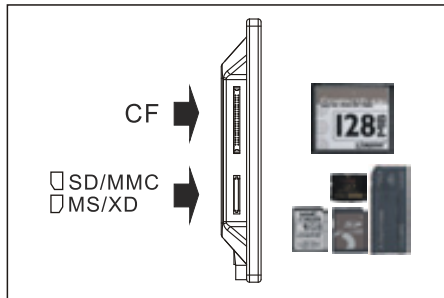
Note: When powering on the unit, it may be in a condition that some images moving across the screen. Please unplug the adapter and turn on the unit again.

Basic Operations

Insert a kind of memory card

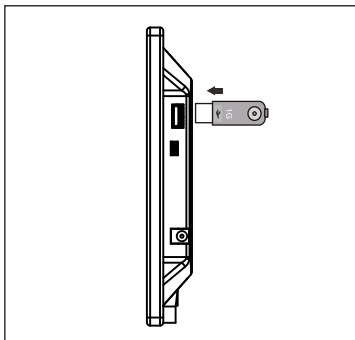
When inserting a memory card into the frame, refer to the image to make sure that both the memory card and the frame are aligned correctly (the side of the memory card on which sticker is affixed should face the frame).

CF, SD, Memory Stick, MMC cards, XD cards are compatible with this unit. Aligning the memory card upside down may cause user-error damage. This may nullify the warranty.



USB Removable Storage Devices

Insert USB removable storage devices (ie: flash drives) into the USB HOST port on the side of the frame.



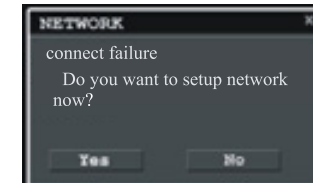
Removing the Memory Card

When removing a memory card from the frame, pull the card straight away from the unit. Avoid bending the card.

Advanced Operations

YOUTUBE

In the main menu, touch the YOUTUBE icon. If network connection has failed, you will see a dialog box as follow:



Select "Yes" to begin network setting, or select "No" to return the main menu.

Note: To setup network, the "Network setting" in the Advanced Operation Part in this manual for your reference.

After setup network successfully, you will enter into the classified interface of the YOUTUBE.



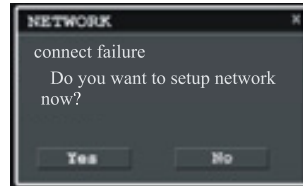
ICONS	MEANING
1	Exit and return to the previous menu
2	Access to your own YouTube video list

In the classified interface of YOUTUBE, select a kind of video, double touch the video name or touch the preview icon on the left to enter the download interface. You can also touch "My YouTube" icon to enter your video folder on YouTube.

Advanced Operations

Stock

In the main menu, touch the STOCKI icon. If network connection has failed, you will see a dialog box as follow:



Select "Yes" to begin network setting, or select "No" to return the main menu.

Note: To setup network, the "Network setting" in the Advanced Operation Part in this manual for your reference.

After setup network successfully, you will see the screen as below:



ICONS	MEANING
1	Exit and return to the previous menu
2	Enter button
3	Backspace key
4	Caps lock key
5	Space bar

Input the desired stock symbol or company name, press the Enter icon to enter into the STOCK QUOTES interface via the downloading interface. It will display the information of the stock.

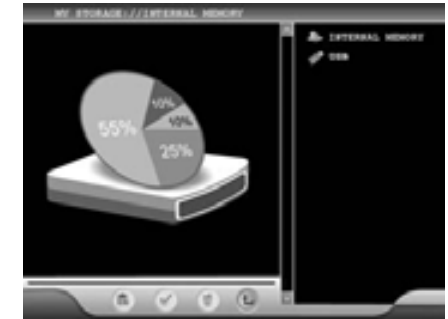


Tips: If the stock quotes failed to download, there will be a tip appears on the screen. Touch "X" on the top right to return to the previous menu.

Basic Operations

Select a kind of storage

In the main menu mode, touch the MY STORAGE icon, and then enter the storage list mode.



In the storage list, double touch the file name or touch the preview of the designed item (Internal Memory/Memory Card/Flash Drive) to enter the file list.



Basic Operations

Photos

Photo Step Show

Tip 1: In the file list mode, touch the file name, there will be a small preview on the left interface. Touch the preview to enter into the large image preview mode as below. It will auto begin a single photo show if no operations in 5s.

Tip 2: in the file list mode, double touch the file name to enter into the large preview mode as below. It will auto begin a single photo show if no operation in 5s.



1 2 3 4 5 6 7

ICONS	MEANING
1	Entire image slide show
2	Skip to the previous image.
3	Skip to the next image.
4	Background music ON/OFF
5	Decrease the volume.
6	Increase the volume.
7	Exit

Photo Slide Show

In the photo step show mode, touch the icon of entire image slide show, the image will display in full screen one by one.

Displaying photos in background music

In the large image preview mode, touch the icon 4 to play music. It will auto begin a single photo show if no operations in 5s. Touch the icon 4 again to stop a music playing.

Touch the icon 4 and then touch the icon 1, it will begin a photo slide show in background music.

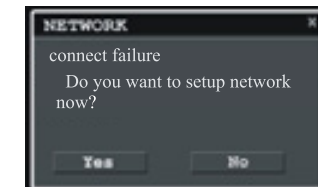


Note: Randomly touch the screen in the photo step show or slide show mode to return to the large image preview mode.

Advanced Operations

GMAIL

In the main menu, touch the GMAIL icon. If network connection has failed, you will see a dialog box as follow:



Select "Yes" to begin network setting, or select "No" to return the main menu.

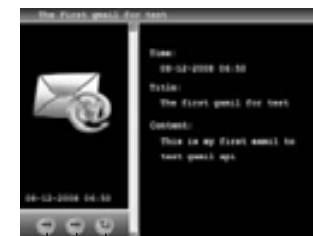
Note: To setup network, the "Network setting" in the Advanced Operation Part in this manual for your reference.

After setup network successfully, you can enter into the login interface of Gmail,



In the GMAIL login interface, use soft keyboard, input user name and password. Then touch ← icon to enter the GMAIL download page, the inputed information will be saved automatically.

After download, enter into the theme interface of GMAIL to look over whether there is a new e-mail.



1 2 3

ICONS	MEANING
1	Skip to the previous e-mail.
2	Skip to the next e-mail.
3	Exit

Advanced Operations

News

In the main menu, touch the NEWS icon. If network connection has failed, you will see a dialog box as follow:



Select "Yes" to begin network setting, or select "No" to return the main menu.

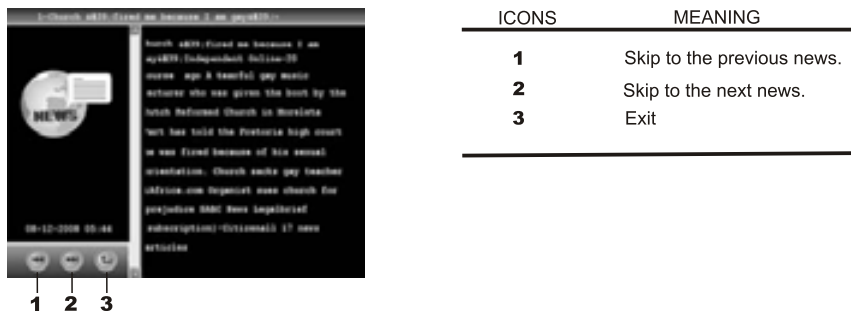
Note: To setup network, the "Network setting" in the Advanced Operation Part in this manual for your reference.

After setup network successfully, you can log on the classified interface of GOOGLE and YAHOO in the RSS NEWS,

In the classified interface of GOOGLE and YAHOO, select GOOGLE or YAHOO in the list on the right, and double touch the news name or touch the preview icon on the left to enter the corresponding NEWS classified interface.

In the NEWS classified interface, select the desired kind of news, touch the preview icon on the left to enter the new download interface.

After downloading the news, enter the preview news interface, the iconograph included in the news will be shown on the left screen.



Basic Operations

Music

Tip1: In the file list, touch the desired music name to play. There will be a music icon on the left interface. Touch the music icon on the left to play music.

Tip2: In the file list, double touch the desired music name to play the music directly.

During playback, the right side is current music list, while the left side is the details of the music which is playing. Double touch the other music name to begin play the other music.



Pausing a song

During playback, touch the Pause icon to pause the song. And then touch the Play icon or double touch the music name to continue playing.

Mute Mode

During playback, touch the Mute icon to mute the sound. Touch the icon again to continue play the song.

Adjusting the volume

During playback, touch the "+" or "-" icon to increase or decrease the volume.

Exit

In the music interface, touch the Exit icon to return to the previous file list.

Basic Operations

Movie

Tip1: In the file list, touch the desired movie name to play. There will be a movie icon on the left interface. Touch the movie icon on the left to play movie.

Tip2: In the file list, double touch the desired movie name to play the movie directly.



Pausing a movie

During playback, touch the Pause icon to pause the movie. And then touch the Play icon to continue playing.

Adjusting the volume

During playback, touch the "+" or "-" icon to increase or decrease the volume.

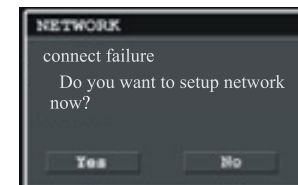
Exit

In the movie interface, touch the Exit icon to return to the previous file list.

Advanced Operations

Weather

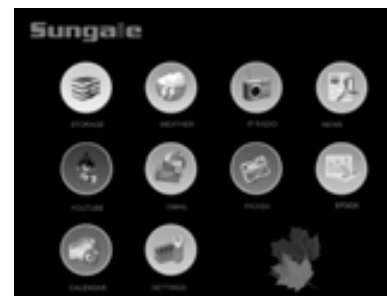
In the main menu, touch the WEATHER icon. If network connection has failed, you will see a dialog box as follow:



Select "Yes" to begin network setting, or select "No" to return the main menu.

Note: To setup network, the "Network setting" in the Advanced Operation Part in this manual for your reference.

After setup network successfully, you can enter into the Weather menu,



Note: The weather forecast from the unit bases on the Zip Code (US).

Touch the number soft-keyboard, input five number of Zip Code of the desired city, touch ← icon to show the weather information on the left side..

Advanced Operations

Picasa

In the main menu, touch the PICASA icon. If network connection has failed, you will see a dialog box as follow:

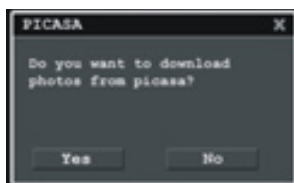


Select "Yes" to begin network setting, or select "No" to return the main menu.

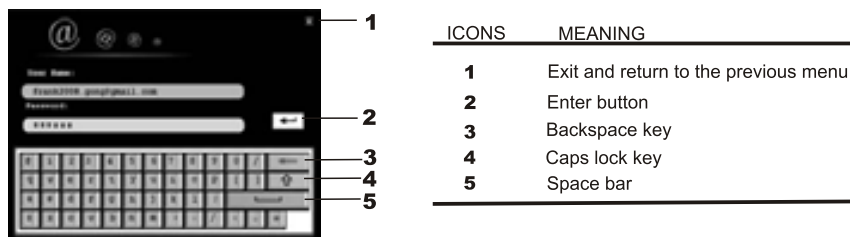
Note: To setup network, the "Network setting" in the Advanced Operation Part in this manual for your reference.

After setup network successfully, you can enter into the download selection interface,

In the download selection interface, touch "NO" to enter the file list and play the pre-download files from Picasa; or touch "YES" to enter the inporting information interface.



In the inporting information interface, use soft keyboard, inport user name and password. Then touch ← icon to enter the download page, the inported information will be saved automatically.



After download, the screen will enter into the file list, you can select the desired file to play.

Basic Operations

E-Book

Tip1: In the file list, touch the desired TXT file to read There will be an E-Book icon on the left interface. Touch the E-Book icon on the left to enter the reading interface.

Tip2: In the file list, double touch the desired TXT file to read directly.



Previous Page

In the reading interface, touch ◀◀ to skip to the previous page.

Next Page

In the reading interface, touch ▶▶ to skip to the next page.

Exit

In the reading interface, touch the Exit icon to return to the previous file list.

Basic Operations

Calendar and Clock

In the main menu mode, touch the Calendar/Clock icon, and enter into the Calendar/Clock mode.



In the Calendar/Clock mode, touch the icons side by the Year to adjust the year, and touch the icons side by the Month to adjust the month.

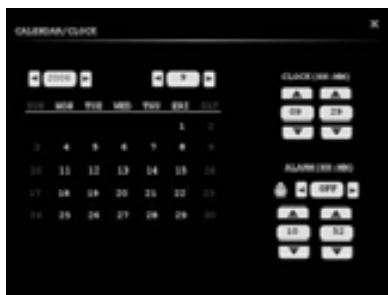
Note: Just adjust the calendar, you can't set calendar or clock in the mode.

Exit

In the Calendar/Clock interface, touch the "X" icon on the right top side to return to the main menu mode.

Setup

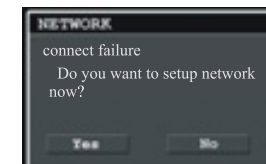
In the Calendar/Clock interface, touch the SETUP icon to enter the setup mode.



Advanced Operations

IP Radio

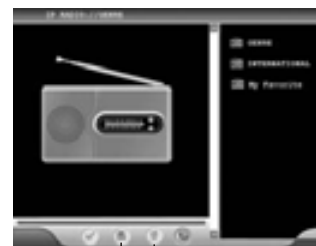
In the main menu, touch the IP Radio icon. If network connection has failed, you will see a dialog box as follow:



Select "Yes" to begin network setting, or select "No" to return the main menu.

Note: To setup network, the "Network setting" in the Advanced Operation Part in this manual for your reference.

After setup network successfully, you can enter into the IP Radio stations interface, then, tap the list on the right side to select classification and stations.



1 2

ICONS	MEANING
1	Add selected station to My Favorite
2	Delete selected station from My Favorite

After selecting a station, tap the radio receiver icon to receive broadcasting.
 Note: If you want to add the broadcasting station to My Favorite folder, tap button 2.
 If you want to delete a station from My Favorite, select it, then, tap button 3

During broadcasting, you will see below interface:



1 2 3 4

ICONS	MEANING
1	Mute or Play
2	Decrease the volume.
3	Increase the volume.
4	Exit

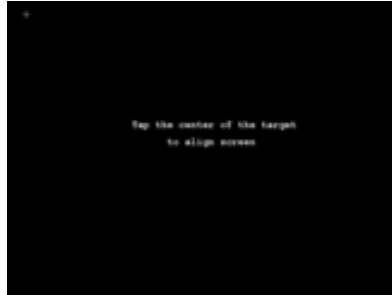
Note: Some broadcasting station may be with lower digital stream depending on the physical locations and gateways. When "network isn't smooth" appears on screen, please change a station.

Advanced Operations

Settings

Screen calibration

Continuously press the RIGHT button on the panel board for five times to assess the below menu:



Press ENTER button on the panel board to calibrate the screen.

A "+" will appear on the left up corner, touch the center of the "+"; then, the "+" will move to the right up corner of the screen, touch it again, the "+" will move to right down corner, left down corner and center of the screen in the order, touch it in order. Now, you finish the calibration.

Note: When you touch the "+", please try to touch it as quickly as possible, it may be taken as two times touch, the "+" will not appear in order. If it happens, please start the calibration again.

EXIT

After calibrating screen, the frame will return to the previous menu.

Note: Don't try to calibrate the screen unless it is necessary.

Basic Operations

Calendar and Clock

Calendar Setting

In the Calendar/Clock setting mode, touch the icons side by the Year to set the right year; touch the icons side by the Month to set the right month; and touch the Date icon to set the date.

Clock Setting

In the Calendar/Clock setting mode, touch the icons on or below the time icons to set the right time.

Alarm Setting

In the Calendar/Clock setting mode, touch the icons side by the alarm mode icon to set the alarm on or off; touch the icons on or below the alarm time icons to set the desired alarm time.

Exit

After setting operation, touch the "X" icon on the right top side to return to the main menu mode.

Alarm Function

When it is the alarm time, the screen will enter into the alarm-ring mode and the alarm will ring. Touch screen to return to the main menu.

Note: Make sure the digital photo frame is working at the alarm time.



Basic Operations

Edit files

Copy and Paste Files

In the file list, touch to highlight the Select icon (the icon will turn orange after highlighting); select and touch the file desired to be copied in the file list on the right side, the selected file will turn red; continue touch the file name to select and copy more, the files which have been selected will turn blue.



ICONS	MEANING
1	Select
2	Paste
3	Delete
4	Exit

After selecting the desired files, touch the Exit icon to exit the list. Enter the desired storage, folder or list to paste files, and touch the Paste icon to paste files. There is a tip on the screen to show the copying progress.

After pasting, the interface return to the file list mode. The copied files will be found in the list.

Delete files

In the file list, touch to highlight the Select icon, the icon will turn orange after highlighting; select and touch the file desired to be deleted in the file list on the right side, the selected file will turn red; continue touch the file name to select and delete more, the files which have been selected will turn blue.

After selecting the desired files, touch the Delete icon to delete the file. There is a tip on the screen to show the deleting progress.

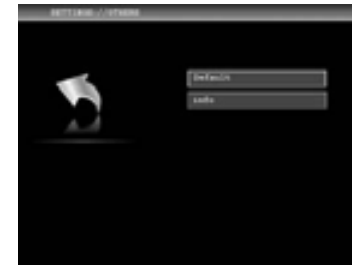
After deleting, the interface return to the file list mode. The deleted files won't be found in the list.

Advanced Operations

Settings

5. Others

In the SETTINGS menu, touch others to access, the screen will display as below :



Default

In the others setting menu, touch Default to resume the original settings. After setting, the screen will return to the setting menu automatically.

Product Info

In the others setting menu, touch "info" icon to show the software information of the product and the MAC address. Touch the EXIT icon to return to the setting menu.



Note: When the touch panel is invalid, please calibrate the screen.

Advanced Operations

Settings

Note: It will auto enter the IP setting mode after selecting a router. Tap \leftarrow , the unit will get IP automatically.

Statically Set IP

In the IP setting mode, touch Statically Set IP to enter into the statical IP mode.

In the statical IP mode, use the number soft-keyboard, set the IP, Mask, Gateway, PerDNS and AltDNS in turn on the left side.



ICONS	MEANING
1	Continue connecting
2	Tab key
3	Backspace key

After the IP is set well and the DPF is connected to the internet, DPF will appear as below:



Now, you can enjoy the endless internet source.

Tip: How to get your IP

1. Open your PC, click "Start", then, click "Run"



2. Input "cmd", then, click "OK"



3. Input "ipconfig/all", you will get your IP information similar as below:



For more information about IP, please visit our website.

Advanced Operations

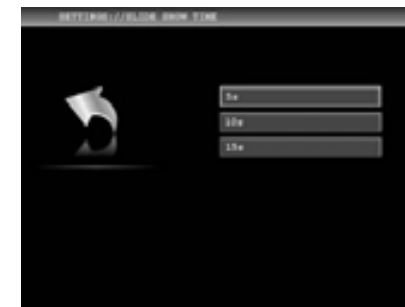
Settings

In the main menu mode, touch the SETTINGS icon, and then enter the setting mode.



1.Set slide show time

In the SETTINGS menu, touch "slide show time" to access the following choices:



Touch to set the interval time of slide show to 5s/10s/15s.

Advanced Operations

Settings

2. Change Slide Show Mode

In the SETTINGS menu, touch “slide show mode”, the screen will display as below:

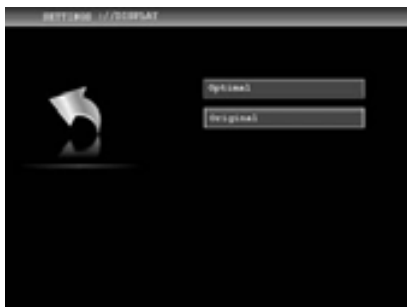


Touch the corresponding item to set the photo transition effect. Many transition effects for choice: Random、Normal、Top_Bottom、Bottom_Top、Left_Right、Right_Left、Vertical_Close、Vertical_Open、Horizontal_Close、Horizontal_Open、Close、Open、TopL_BottomR、TopR_BottomL、BottomR_TopL、BottomL_TopR

Touch the UP/DOWN icon to select items. After setting, the screen will return to the previous menu automatically.

3. Display

In the SETTINGS menu, touch “display” icon , the screen will display as below:



Touch Optimal to display entire images in slide show mode; touch Original to display images fit to screen in slide show mode.

Advanced Operations

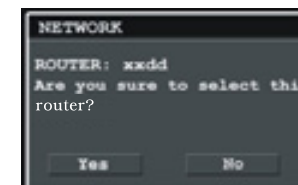
Settings

4. Network

In the SETTINGS menu, touch “network” icon to search the routers.



After searching routers successfully, there will be a router list as follow:



You can choose a router according to the received signal strength which be displayed on the right of the router’s name. If password (WEP key or WPA/WPA2 key) is necessary (There will be an image of a key on the left of the router’s name), input them in the following interface.



ICONS	MEANING
1	Enter button
2	Backspace key
3	Caps lock key
4	Space bar

Note:

1. If no password needed, the DPF will be connected to your home router automatically.
2. For WPA password, it needs about 15 seconds to setup connection.