

# TP-LINK®

## User Guide

**Archer T8E**

**AC1750 Wireless Dual Band PCI Express Adapter**

**Archer T9E**

**AC1900 Wireless Dual Band PCI Express Adapter**



---

Rev: 1.0.0

1910011100

## **COPYRIGHT & TRADEMARKS**

Specifications are subject to change without notice. **TP-LINK®** is a registered trademark of TP-LINK TECHNOLOGIES CO., LTD. Other brands and product names are trademarks or registered trademarks of their respective holders.

No part of the specifications may be reproduced in any form or by any means or used to make any derivative such as translation, transformation, or adaptation without permission from TP-LINK TECHNOLOGIES CO., LTD. Copyright © 2014 TP-LINK TECHNOLOGIES CO., LTD. All rights reserved.

<http://www.tp-link.com>

# FCC STATEMENT



This equipment has been tested and found to comply with the limits for a Class B digital device, pursuant to part 15 of the FCC Rules. These limits are designed to provide reasonable protection against harmful interference in a residential installation. This equipment generates, uses and can radiate radio frequency energy and, if not installed and used in accordance with the instructions, may cause harmful interference to radio communications. However, there is no guarantee that interference will not occur in a particular installation. If this equipment does cause harmful interference to radio or television reception, which can be determined by turning the equipment off and on, the user is encouraged to try to correct the interference by one or more of the following measures:

- Reorient or relocate the receiving antenna.
- Increase the separation between the equipment and receiver.
- Connect the equipment into an outlet on a circuit different from that to which the receiver is connected.
- Consult the dealer or an experienced radio/ TV technician for help.

This device complies with part 15 of the FCC Rules. Operation is subject to the following two conditions:

- 1) This device may not cause harmful interference.
- 2) This device must accept any interference received, including interference that may cause undesired operation.

Any changes or modifications not expressly approved by the party responsible for compliance could void the user's authority to operate the equipment.

Note: The manufacturer is not responsible for any radio or TV interference caused by unauthorized modifications to this equipment. Such modifications could void the user's authority to operate the equipment.

## **FCC RF Radiation Exposure Statement:**

This equipment complies with FCC RF radiation exposure limits set forth for an uncontrolled environment. This device and its antenna must not be co-located or operating in conjunction with any other antenna or transmitter. To comply with FCC RF exposure compliance requirements, this grant is applicable to only Mobile Configurations. The antennas used for this transmitter must be installed to provide a separation distance of at least 20 cm from all persons and must not be co-located or operating in conjunction with any other antenna or transmitter."

The user manual for local area network devices shall contain instructions related to the restrictions mentioned in the above section, namely that:

- (i) the device for operation in the band 5150-5250 MHz is only for indoor use to reduce the potential for harmful interference to co-channel mobile satellite systems;
- (ii) the maximum antenna gain permitted for devices in the bands 5250-5350 MHz and 5470-5725 MHz shall comply with the e.i.r.p. limit; and
- (iii) the maximum antenna gain permitted for devices in the band 5725-5825 MHz shall comply with the e.i.r.p. limits specified for point-to-point and non point-to-point operation as appropriate.

## CE Mark Warning



This is a class B product. In a domestic environment, this product may cause radio interference, in which case the user may be required to take adequate measures.

## National Restrictions

This device is intended for home and office use in all EU countries (and other countries following the EU directive 1999/5/EC) without any limitation except for the countries mentioned below:

Country	Restriction	Reason/remark
Bulgaria	None	General authorization required for outdoor use and public service
France	Outdoor use limited to 10 mW e.i.r.p. within the band 2454-2483.5 MHz	Military Radiolocation use. Refarming of the 2.4 GHz band has been ongoing in recent years to allow current relaxed regulation. Full implementation planned 2012
Italy	None	If used outside of own premises, general authorization is required
Luxembourg	None	General authorization required for network and service supply(not for spectrum)
Norway	Implemented	This subsection does not apply for the geographical area within a radius of 20 km from the centre of Ny-Ålesund
Russian Federation	None	Only for indoor applications

Note: Please don't use the product outdoors in France.

## Canadian Compliance Statement

This device complies with Industry Canada license-exempt RSS standard(s). Operation is subject to the following two conditions:

- (1) This device may not cause interference, and
- (2) This device must accept any interference, including interference that may cause undesired operation of the device.

Cet appareil est conforme aux norms CNR exemptes de licence d'Industrie Canada. Le fonctionnement est soumis aux deux conditions suivantes:

(1)cet appareil ne doit pas provoquer d'interférences et

(2)cet appareil doit accepter toute interférence, y compris celles susceptibles de provoquer un fonctionnement non souhaité de l'appareil.

This device has been designed to operate with the antennas listed below, and having a maximum gain of 2 dBi. Antennas not included in this list or having a gain greater than 2 dBi are strictly prohibited for use with this device. The required antenna impedance is 50 ohms.

To reduce potential radio interference to other users, the antenna type and its gain should be so chosen that the equivalent isotropically radiated power (e.i.r.p.) is not more than that permitted for successful communication.

## Industry Canada Statement

Complies with the Canadian ICES-003 Class B specifications.

Cet appareil numérique de la classe B est conforme à la norme NMB-003 du Canada.

This device complies with RSS 210 of Industry Canada. This Class B device meets all the requirements of the Canadian interference-causing equipment regulations.

Cet appareil numérique de la Classe B respecte toutes les exigences du Règlement sur le matériel brouilleur du Canada.

## Korea Warning Statements

당해 무선설비는 운용중 전파혼신 가능성이 있음.

## NCC Notice & BSMI Notice

注意！

依據 低功率電波輻射性電機管理辦法

第十二條 經型式認證合格之低功率射頻電機，非經許可，公司、商號或使用者均不得擅自變更頻率、加大功率或變更原設計之特性或功能。

第十四條 低功率射頻電機之使用不得影響飛航安全及干擾合法通行；經發現有干擾現象時，應立即停用，並改善至無干擾時方得繼續使用。前項合法通信，指依電信規定作業之無線電信。低功率射頻電機需忍受合法通信或工業、科學以及醫療用電波輻射性電機設備之干擾。

減少電磁波影響，請妥適使用。

於 5.25GHz 至 5.35GHz 區域內操作之無線設備的警告聲明

工作頻率 5.250~5.350GHz 該頻段限於室內使用。

## 安全諮詢及注意事項

- 請使用原裝電源供應器或只能按照本產品注明的電源類型使用本產品。
- 清潔本產品之前請先拔掉電源線。請勿使用液體、噴霧清潔劑或濕布進行清潔。
- 注意防潮，請勿將水或其他液體潑灑到本產品上。
- 插槽與開口供通風使用，以確保本產品的操作可靠並防止過熱，請勿堵塞或覆蓋開口。
- 請勿將本產品置放於靠近熱源的地方。除非有正常的通風，否則不可放在密閉位置中。
- 請不要私自打開機殼，不要嘗試自行維修本產品，請由授權的專業人士進行此項工作。



Продукт сертифіковано згідно с правилами системи УкрСЕПРО на відповідність вимогам нормативних документів та вимогам, що передбачені чинними законодавчими актами України.



## Safety Information

- When product has power button, the power button is one of the way to shut off the product; when there is no power button, the only way to completely shut off power is to disconnect the product or the power adapter from the power source.
- Don't disassemble the product, or make repairs yourself. You run the risk of electric shock and voiding the limited warranty. If you need service, please contact us.
- Avoid water and wet locations.

This product can be used in the following countries:

AT	BG	BY	CA	CZ	DE	DK	EE
ES	FI	FR	GB	GR	HU	IE	IT
LT	LV	MT	NL	NO	PL	PT	RO
RU	SE	SK	TR	UA	US		

## DECLARATION OF CONFORMITY

For the following equipment:

Product Description: **AC1750/AC1900 Wireless Dual Band PCI Express Adapter**

Model No.: **Archer T8E/Archer T9E**

Trademark: **TP-LINK**

We declare under our own responsibility that the above products satisfy all the technical regulations applicable to the product within the scope of Council Directives:

Directives 1999/5/EC, Directives 2006/95/EC, Directives 1999/519/EC, Directives 2011/65/EU

The above product is in conformity with the following standards or other normative documents:

**EN 300 328 V1.8.1**

**EN 301 489-1 V1.9.2 & EN 301 489-17 V2.2.1**

**EN 60950-1: 2006 + A11: 2009 + A1: 2010 + A12: 2011+A2:2013**

**EN 62311: 2008**

**EN 301 893 V1.7.1**

**EN50385:2002**

*The product carries the CE Mark:*

**CE 1588** 

Person responsible for making this declaration:



**Yang Hongliang**  
**Product Manager of International Business**

Date of issue: 2014

# CONTENTS

<b>Package Contents .....</b>	<b>1</b>
<b>Chapter 1 Product Overview .....</b>	<b>2</b>
1.1 Introduction .....	2
1.2 Features.....	2
1.3 Conventions.....	2
1.4 LED Status.....	3
<b>Chapter 2 Installation.....</b>	<b>4</b>
2.1 Hardware Installation.....	4
2.2 Software Installation .....	4
<b>Chapter 3 Connect to a Wireless Network .....</b>	<b>10</b>
3.1 To connect using TWCU .....	10
3.2 To connect using WPS.....	14
3.2.1 PBC (Push Button Configuration) method .....	14
3.2.2 PIN method.....	16
3.3 To connect using Windows built-in wireless utility .....	19
3.3.1 In Windows XP .....	19
3.3.2 In Windows 7 .....	20
3.3.3 In Windows 8.....	22
3.3.4 In Windows 8.1 .....	24
<b>Chapter 4 Management.....</b>	<b>27</b>
4.1 Profile.....	27
4.1.1 Add a profile .....	27
4.1.2 Modify a profile .....	32
4.1.3 Delete a profile .....	32
4.2 Advanced.....	32
4.3 About .....	33
<b>Chapter 5 AP Mode (For Windows 7 and Windows 8).....</b>	<b>34</b>
<b>Chapter 6 Uninstall Software.....</b>	<b>37</b>
6.1 In Windows XP/7 .....	37
6.1.1 Uninstall the utility software from your PC .....	37
6.1.2 Uninstall the driver software from your PC .....	38
6.2 In Windows 8/8.1 .....	40
6.2.1 Uninstall the utility software from your PC .....	40
6.2.2 Uninstall the driver software from your PC .....	42
<b>Appendix A: Specifications .....</b>	<b>37</b>
<b>Appendix B: Glossary.....</b>	<b>39</b>



## Package Contents

Please verify that all the package contents below are available.

- One Archer T8E/Archer T9E AC1750/AC1900 Wireless Dual Band PCI Express Adapter
- Quick Installation Guide
- One Resource CD, including:
  - TP-LINK Wireless Configuration Utility (TWCU) and Drivers
  - User Guide
  - Other helpful information

Make sure that the above items are contained in the package. If any of the above items is damaged or missing, please contact your distributor.

# Chapter 1 Product Overview

## 1.1 Introduction

The adapter is a dual band 802.11ac client device designed to deliver a high-speed wireless performance for your desktop. With a faster wireless connection, you can get a better Internet experience, such as downloading, gaming, and video streaming.

The adapter provides high speed wireless connection with other wireless clients. The incredible speed makes it ideal for handling multiple data streams at the same time, which ensures your network stable and smooth. The performance of this 802.11ac wireless will give you the unexpected networking experience at speed much faster than 802.11n. It is also compatible with all IEEE 802.11a, IEEE 802.11b, IEEE 802.11g and IEEE 802.11n products.

The adapter supports WEP, WPA-PSK/WPA2-PSK and WPA/WPA2 encryption to prevent outside intrusion and protect your personal information from being exposed.

The adapter is easy to install and manage. The Quick Setup Wizard will guide you step-by-step through the installation process and the TP-LINK Wireless Configuration Utility (TWCU) will instruct you to quickly set up a wireless connection.

With unmatched wireless performance, reception, and security protection, the Archer T8E/Archer T9E is the best choice for easily adding or upgrading wireless connectivity to your desktop.

## 1.2 Features

- Supports dual-band, 2.4GHz or 5GHz
- Supports IEEE 802.11 ac
- Seamlessly compatible with 802.11a/b/g/n products
- Experience smoother video streaming and online gaming by choosing the clearer 5GHz band for wireless connections
- Supports 64/128 WEP, WPA/WPA2, WPA-PSK/WPA2-PSK(TKIP/AES), supports IEEE 802.1X
- Supports Windows XP 32/64bit, Windows 7 32/64bit, Windows 8 32/64bit, Windows 8.1 32/64bit
- Supports ad-hoc and infrastructure mode
- Bundled utility provides quick & hassle-free installation

## 1.3 Conventions

You can set the parameters according to your demand. This User Guide is shared by Archer T8E and Archer T9E. Here in this Guide we use Archer T8E for example.

The difference between them is:

- Archer T8E AC1750 Wireless Dual Band PCI Express Adapter provide wireless data rate of up to 450Mbps(2.4GHz) and 1300Mbps(5GHz);
- Archer T9E AC1900 Wireless Dual Band PCI Express Adapter provide wireless data rate of up to 600Mbps(2.4GHz) and 1300Mbps(5GHz).

## 1.4 LED Status

LED status:

Status	Working Status
On	The adapter has been installed.
Flashing	Data is being transmitted or received at a high data rate.

## Chapter 2 Installation

Please install the PCI Express adapter into your computer before installing the driver and utility software from the Resource CD.

### 2.1 Hardware Installation

1. Turn off your computer and unplug the power cord from the computer.
2. Open the case and locate an available PCI Express slot. Remove the metal slot cover on the back of the PC. Keep the screws. Turn to your computer manufacturer for instructions if needed.
3. Insert the PCI Express adapter into the PCI Express slot. Make sure that all of its pins have touched the slot's contacts. Once the adapter has been firmly inserted, screw its fastening tab. Then, close your PC case.
4. Insert the power cable back into the computer and turn on your computer.

#### Note:

When the hardware has been successfully installed on your computer, you may be prompted '**Found New Hardware Wizard**' (as shown in Figure 2-1); please click **Cancel**, and then follow the **Software Installation** steps to install driver and utility for your adapter.



Figure 2-1 Found New Hardware Wizard in Windows XP

### 2.2 Software Installation

The adapter's Setup Wizard will guide you through the installation procedures for Windows XP, Windows 7 and Windows 8. The procedures in different systems are quite similar, therefore here we use the procedures in Windows 7 as an example.

1. Insert the Resource CD into your CD-ROM drive and then select model **Archer T8E/Archer T9E** on the window that pops up (as shown in the below Figure 2-2). There will be a menu including: **Install Driver&Utility** and **User Guide**. Click **Install Driver&Utility** to begin.



Figure 2-2

2. The **InstallShield Wizard** window will appear. Click **Next** to continue.



Figure 2-3

3. Choose a setup type. It is recommended to select **Install TP-LINK Wireless Configuration Utility and Driver**. Selecting **Install Driver Only** can only install driver. Click **Next** to continue.

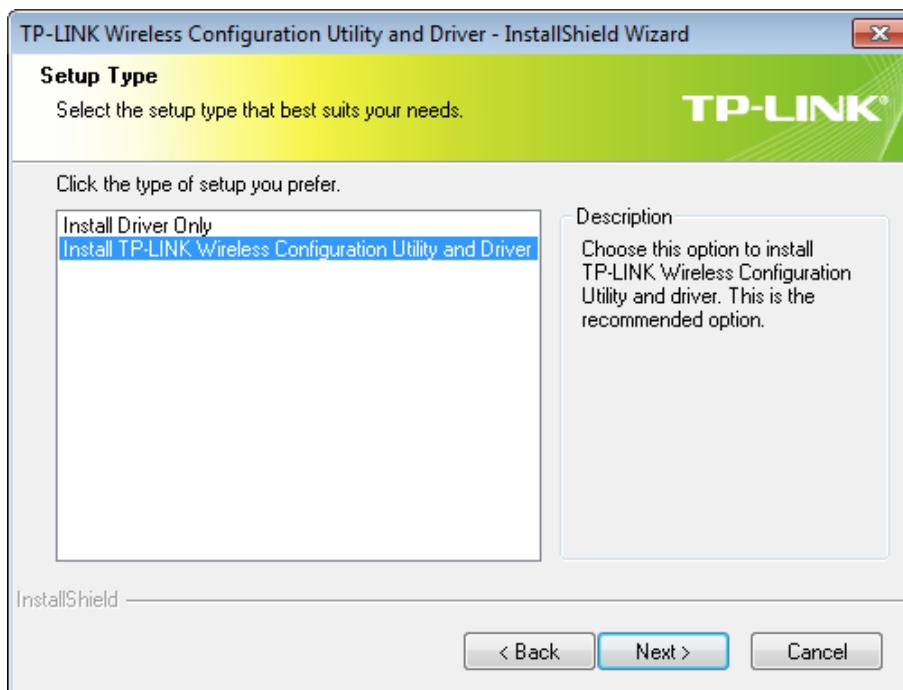


Figure 2-4

- Click **Change** to specify the destination location for the software or you can leave it default.  
Click **Next** in the screen below to continue.

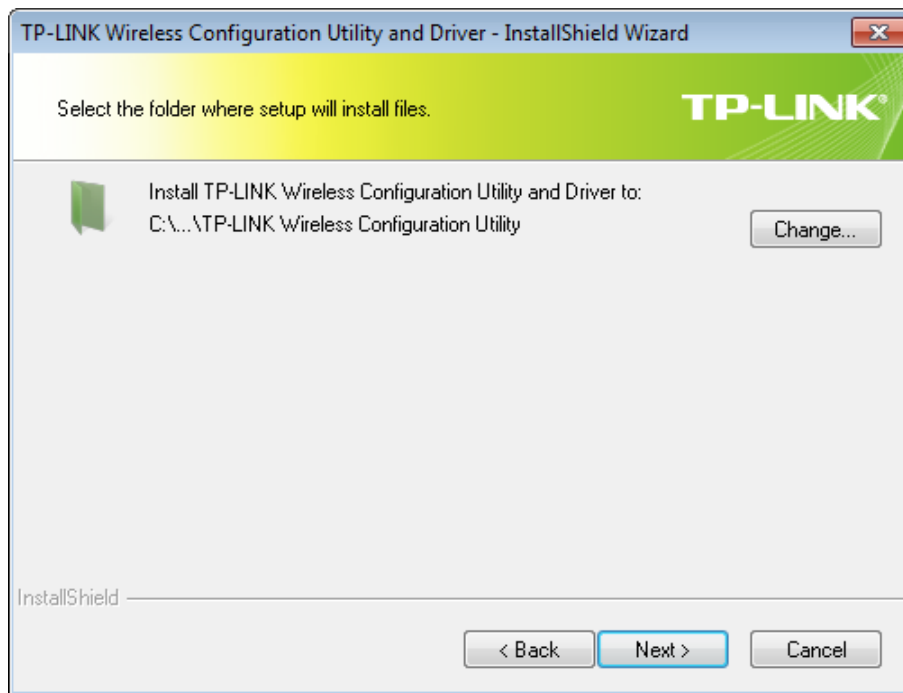


Figure 2-5

- Click **Install** to continue the setup.

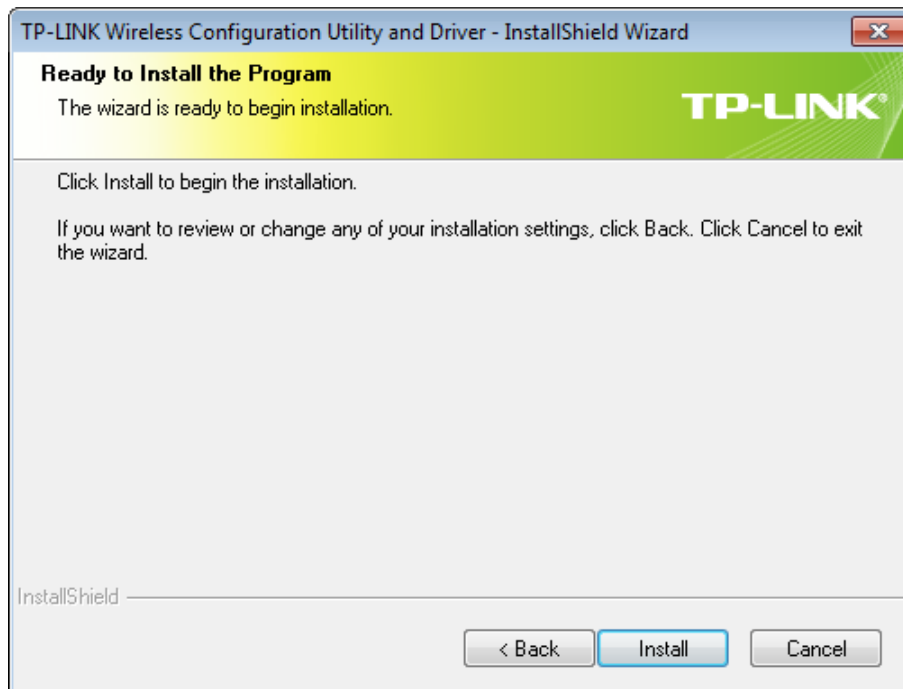


Figure 2-6

- The utility and drivers will install. It may take 1~2 minutes.

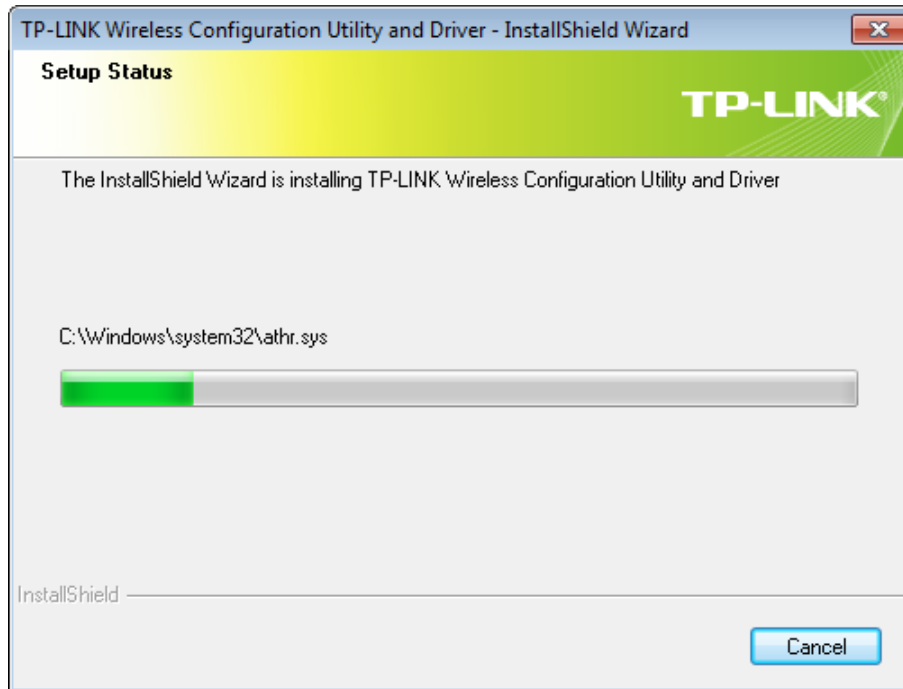


Figure 2-7

- After all the steps above, you will see the screen below. Click **Finish** to complete the setup.

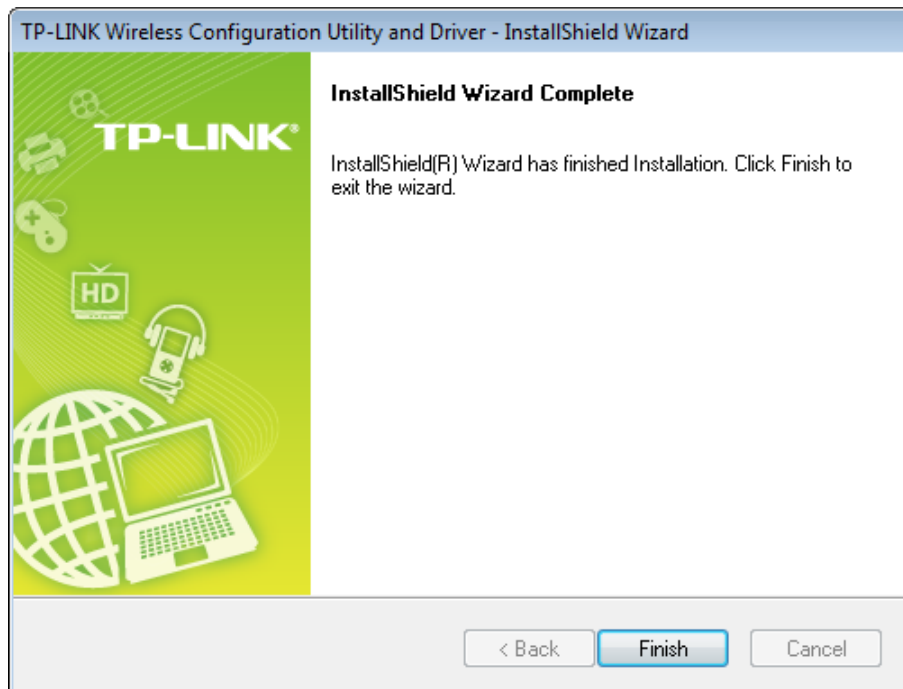



Figure 2-8

- After installation, the utility configuration page will automatically pop up as shown in the following figure and the icon  will appear in your system tray. To connect to a network, please refer to [Chapter 3 Connect to a Wireless Network](#).



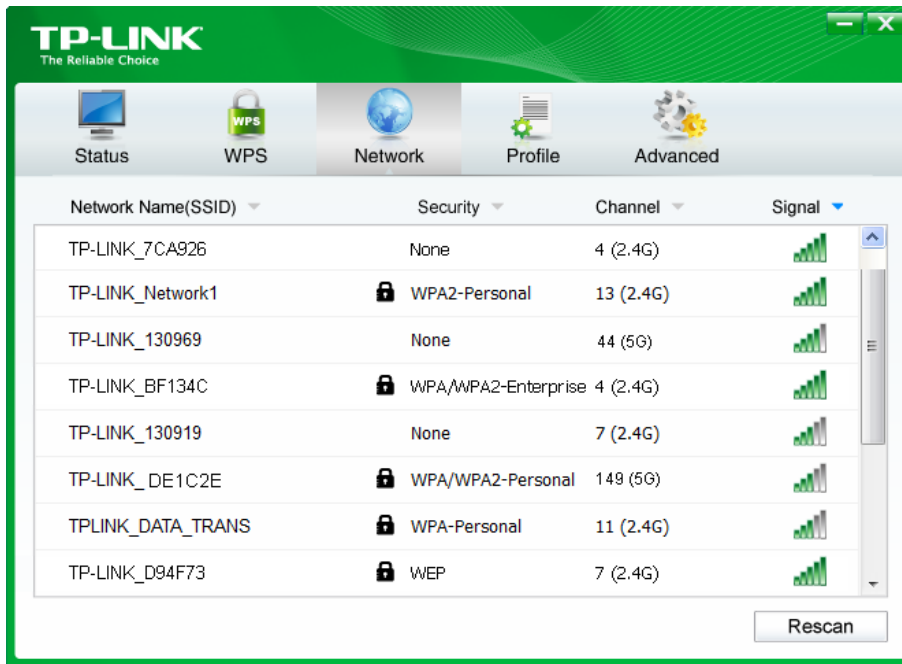


Figure 2-9

## Chapter 3 Connect to a Wireless Network

With both the hardware and software successfully installed into your computer, you can quickly connect to a wireless network using one of the following methods.

➤ **Method One: To connect using TWCU (TP-LINK Wireless Configuration Utility)**

Archer T8E/Archer T9E uses the TWCU as the management software. The utility provides you an easy interface to connect to a network and to change any settings related to the wireless adapter.


➤ **Method Two: To connect using WPS**

By this method, you can connect to your network quickly on the condition that your Router or access point supports WPS or QSS as is called by some other products.

➤ **Method Three: To connect using Windows built-in wireless utility**

Windows users may use the built-in wireless utility to connect to a wireless network. For specific operations, please go to [Section 3.3 To connect using Windows built-in wireless utility](#).

### 3.1 To connect using TWCU

1. After installation, the utility configuration page will automatically pop up on the screen. If the utility page does not pop up, you can also launch the utility by double-clicking the  icon on your desktop.

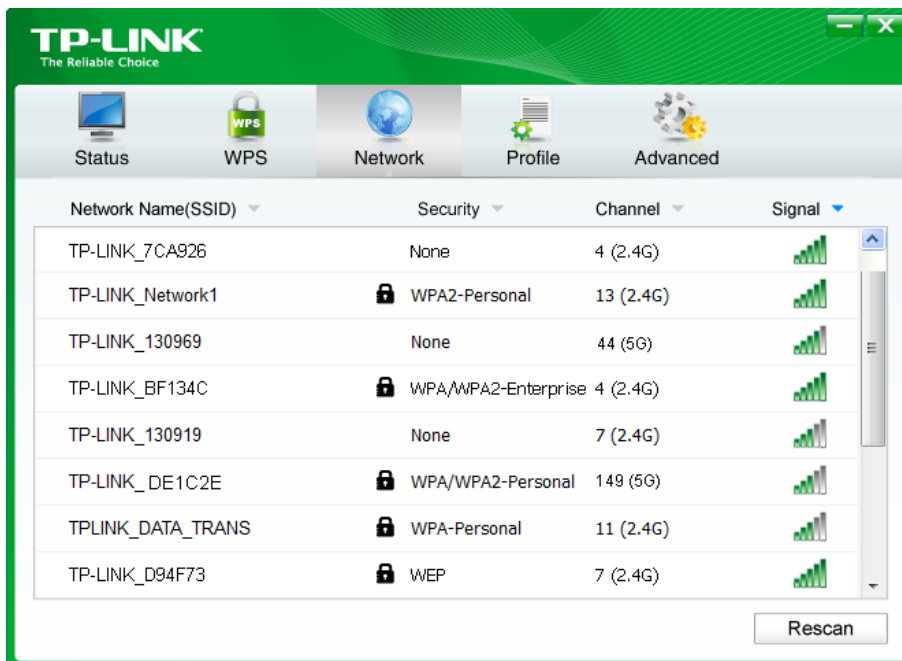


Figure 3-1

2. The **Network** page will display all wireless networks that are available in your area. To connect to a network, simply highlight the wireless network name (SSID) and click **Connect**. If you tick **Connect automatically**, the adapter will automatically connect to your target network next time.

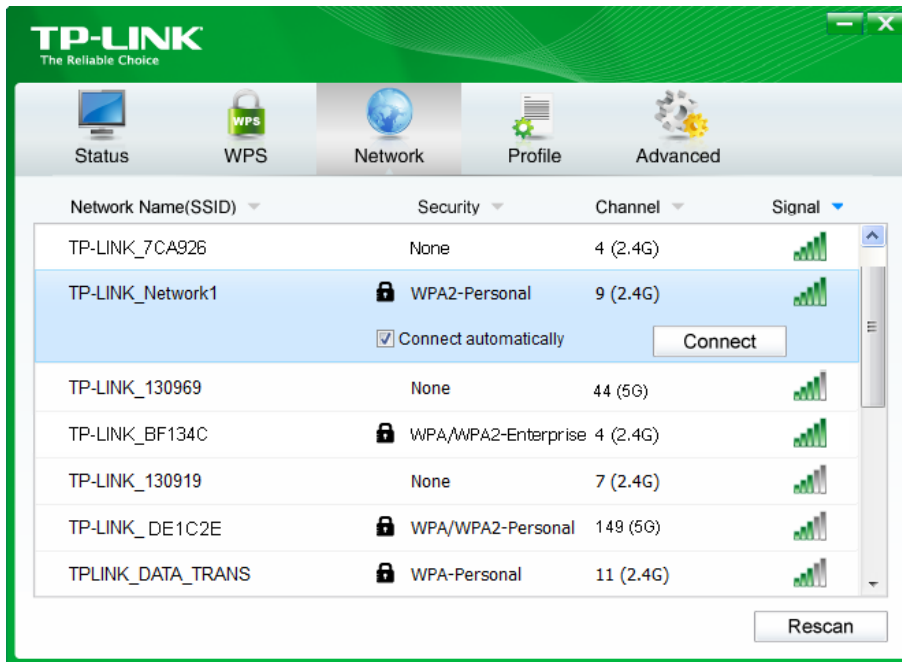


Figure 3-2

3. You will be prompted different windows when you choose wireless network of different security types.

1) Wireless network of **WPA/WPA2-Personal**

If you selected a wireless network of the security type WPA/WPA2-Personal, you will be prompted to enter the password in the security key field, as shown in Figure 3-3. Or you can push the **WPS/QSS** button on your Router (if it features the WPS/QSS function) to quickly build a connection without entering the security key (password).

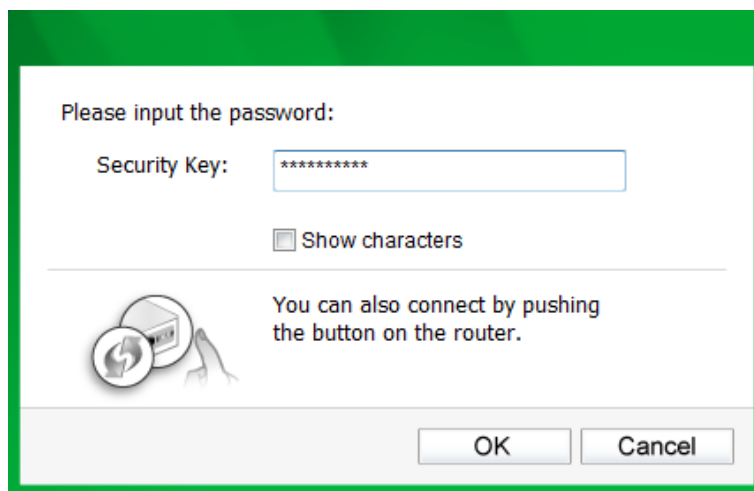


Figure 3-3

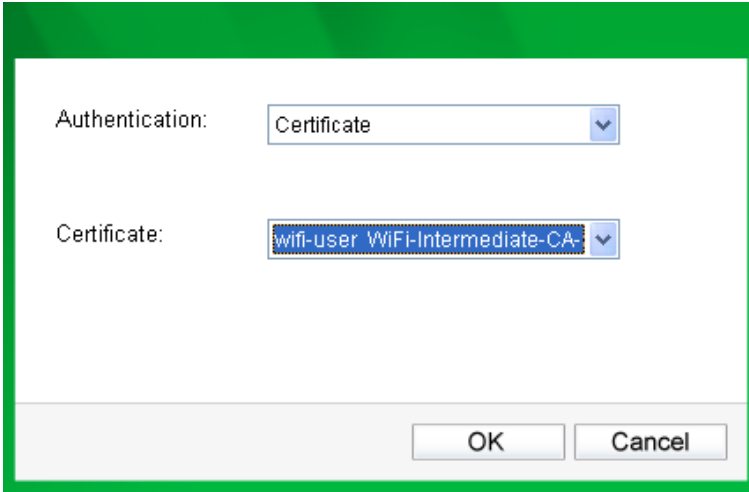
**Note:**

The security key (password) can be found on the configuration page of your Router or Access Point.

2) Wireless network of **WPA/WPA2-Enterprise**

If you selected a wireless network of the security type WPA/WPA2-Enterprise, you will be prompted to choose a type of authentication, either **Certificate** or **Password**. With

**Certificate** as your authentication, you need to select one specific certificate from the drop-down list, as shown in Figure 3-4. With **Password** as your authentication, you should enter the right user name and password in the corresponding field, as shown in Figure 3-5.

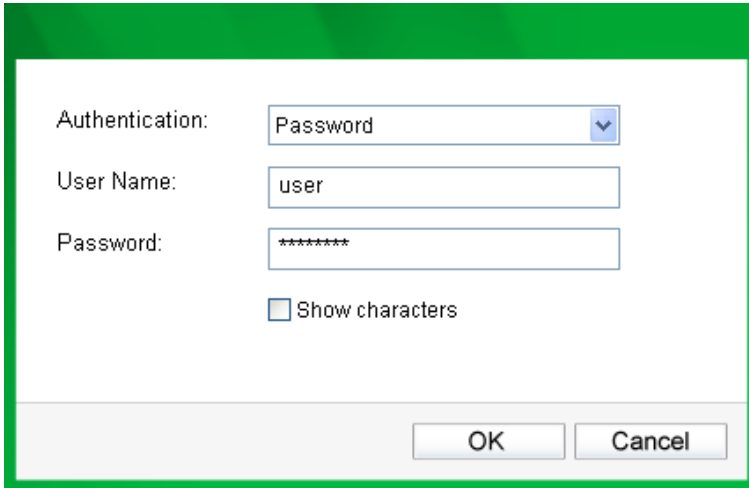
A screenshot of a Windows-style dialog box with a green border. It contains two dropdown menus. The first is labeled 'Authentication:' and has 'Certificate' selected. The second is labeled 'Certificate:' and has 'wifi-user WiFi-Intermediate-CA-' selected. At the bottom right, there are 'OK' and 'Cancel' buttons.

Authentication: Certificate

Certificate: wifi-user WiFi-Intermediate-CA-

OK Cancel

Figure 3-4

A screenshot of a Windows-style dialog box with a green border. It contains three input fields. The first is labeled 'Authentication:' and has 'Password' selected. The second is labeled 'User Name:' and has 'user' entered. The third is labeled 'Password:' and has '\*\*\*\*\*' entered. Below the password field is a checkbox labeled 'Show characters' which is unchecked. At the bottom right, there are 'OK' and 'Cancel' buttons.

Authentication: Password

User Name: user

Password: \*\*\*\*\*

Show characters

OK Cancel

Figure 3-5

### 3) Wireless network of **None**

If you selected a wireless network of **None** (that is, no security is set.), you can get directly connected to this network without any further configuration.

- Please wait a few minutes for the connection process.

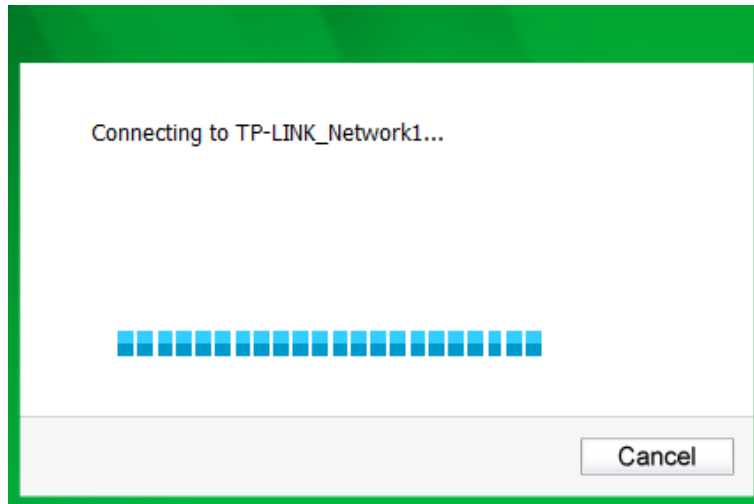


Figure 3-6

- You have now successfully connected to your network. Click **Close** to enjoy the Internet.

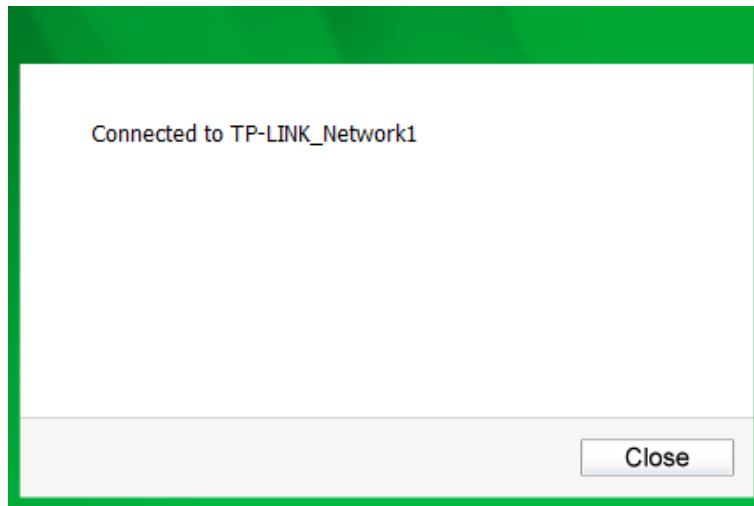


Figure 3-7

- To view more information about the network currently connected, click **Status** in the tools section and the page will display information such as the network type, channel, rate, etc.

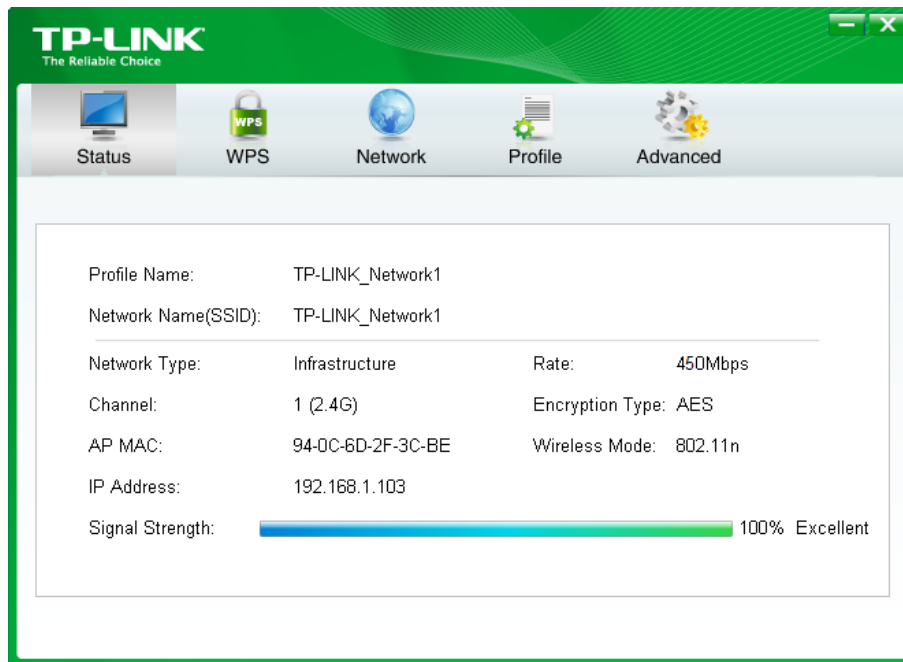


Figure 3-8

## 3.2 To connect using WPS

WPS (Wi-Fi Protected Setup) function allows you to add a new wireless device to an existing network quickly.

If your wireless Router supports WPS or QSS (Quick Security Setup), you can establish a wireless connection between wireless card and Router using either Push Button Configuration (**PBC**) method or **PIN** method. Three WPS connection methods are listed in the following parts, while the third method is only supported in Windows XP.

### 3.2.1 PBC (Push Button Configuration) method

1. Press the WPS or QSS button on the Router. Here we use Router Archer C7 as an example. Press the **WPS/Reset** button more than 5 seconds.



2. Open TWCU and click **WPS** tab. Select **Push the button on my access point or wireless router** and then click **Connect**.

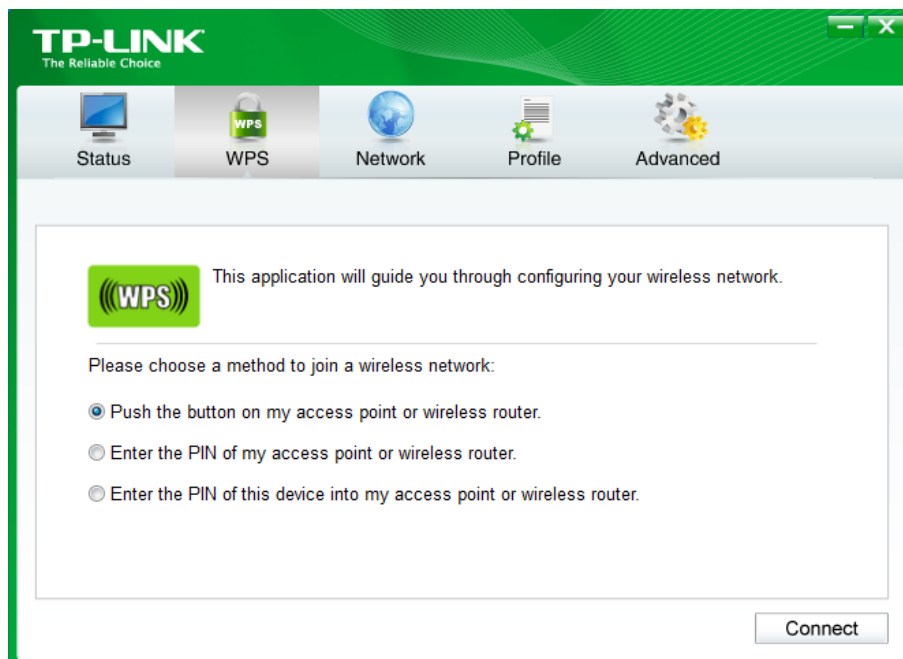


Figure 3-9

3. The adapter will be connecting to the target network.

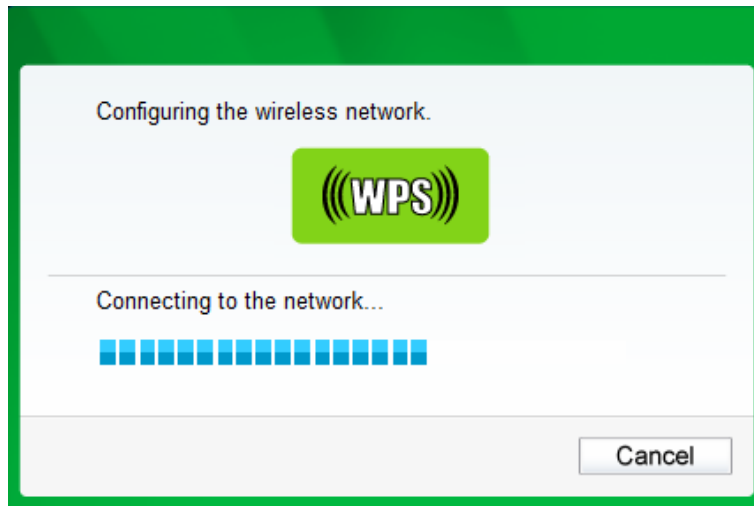


Figure 3-10

4. When the following window appears, you have successfully connected to the network.



Figure 3-11

### 3.2.2 PIN method

There are two ways to configure the WPS by PIN method:

- 1) Enter the PIN from your Router or AP device.
- 2) Enter a PIN into your Router or AP device.

Following are the detailed configuration procedures of each way.

#### 3.2.2.1. Enter the PIN from your Router or AP device

1. Open TWCUI and click **WPS** tab. Select **Enter the PIN of my access point or wireless router**. In the empty field beside PIN, enter the PIN labeled on the bottom of the Router (here takes 13492564 for example). If you have generated a new PIN code for your Router, please enter the new one instead. Click **Connect** to continue.



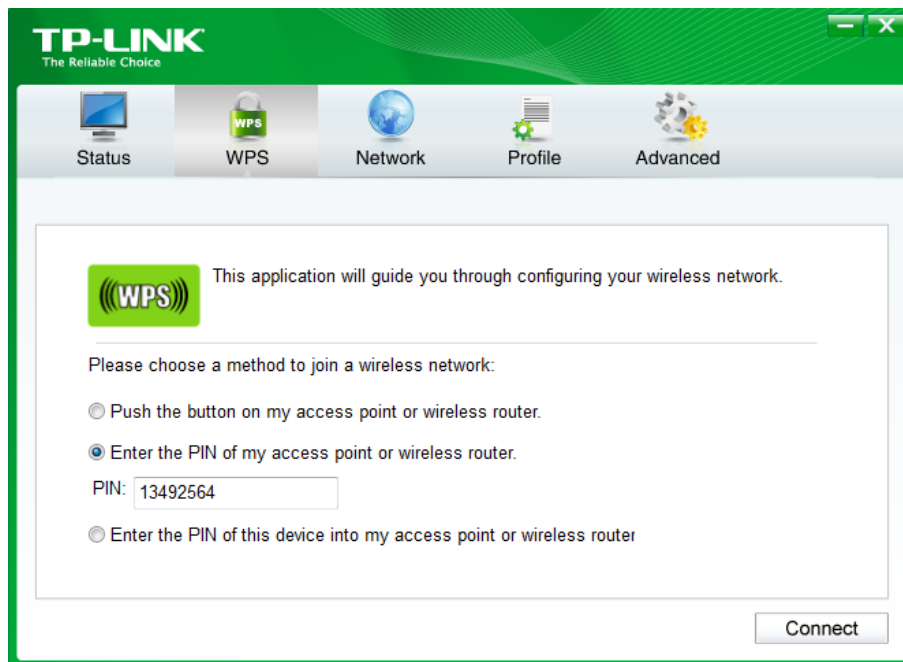


Figure 3-12

2. The adapter will be connecting to the target network.

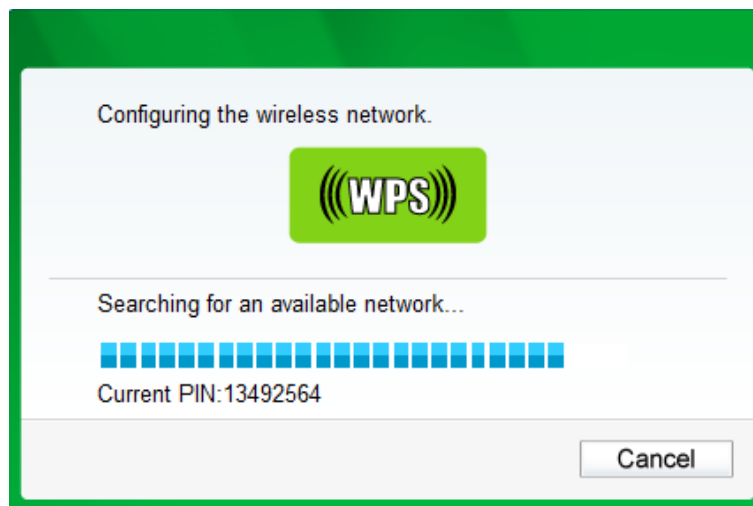


Figure 3-13

3. When Figure 3-11 appears, you have successfully connected to the network.

### 3.2.2.2. Enter a PIN into your AP device

1. Open TWCU and click **WPS** tab. Select **Enter the PIN of this device into my access point or wireless router**. In the field beside PIN, you will see the PIN value of the adapter which is randomly generated. Click **Connect** to continue.

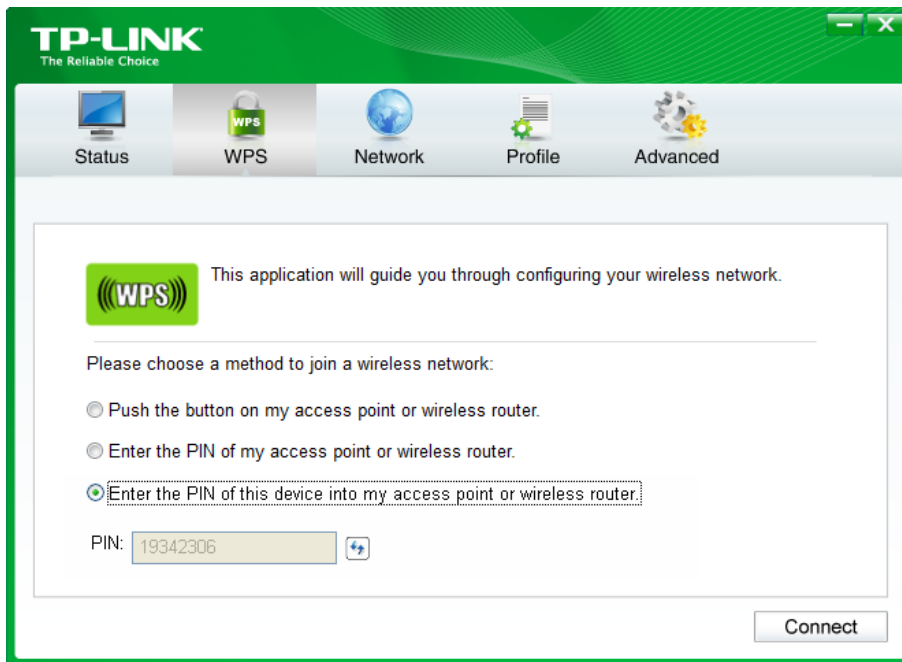


Figure 3-14

- Open your Router's Web-based Utility and click WPS link on the left of the main menu. Then click **Add device** and the following figure will appear. Enter the PIN value of the adapter in the empty field beside PIN and then click **Connect**.

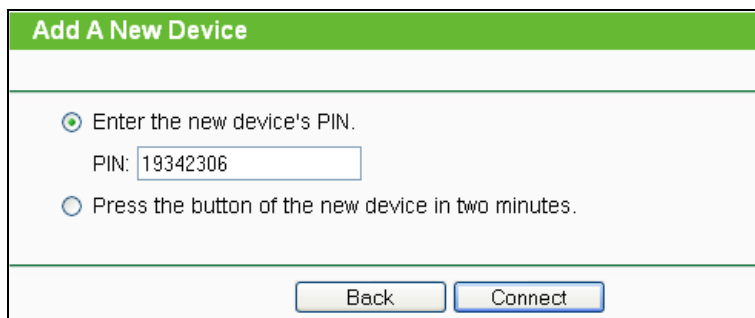


Figure 3-15

- When **Connect successfully** appears on the screen (as shown in Figure 3-16), the WPS configuration is completed. Or you can view the adapter's utility page to see whether the connection has been successful (as shown in Figure 3-17).



Figure 3-16



Figure 3-17

### 3.3 To connect using Windows built-in wireless utility

#### 3.3.1 In Windows XP

Windows XP users may use the built-in wireless utility. Follow the steps below.

1. Right-click on the utility icon in your system tray (lower-right corner). Select **Switch to Windows wireless configuration tool**.

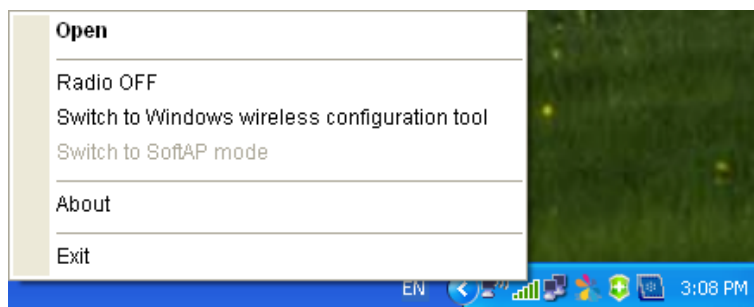


Figure 3-18

2. Right-click on the wireless computer icon in your system tray (lower-right corner). Select **View Available Wireless Networks**.

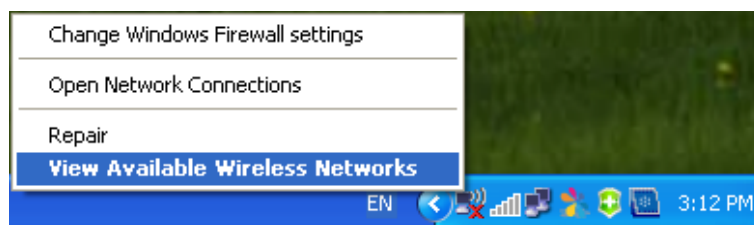


Figure 3-19

3. The utility will display any available wireless networks in your area. Click on a network (displayed using the SSID) and click the **Connect** button.

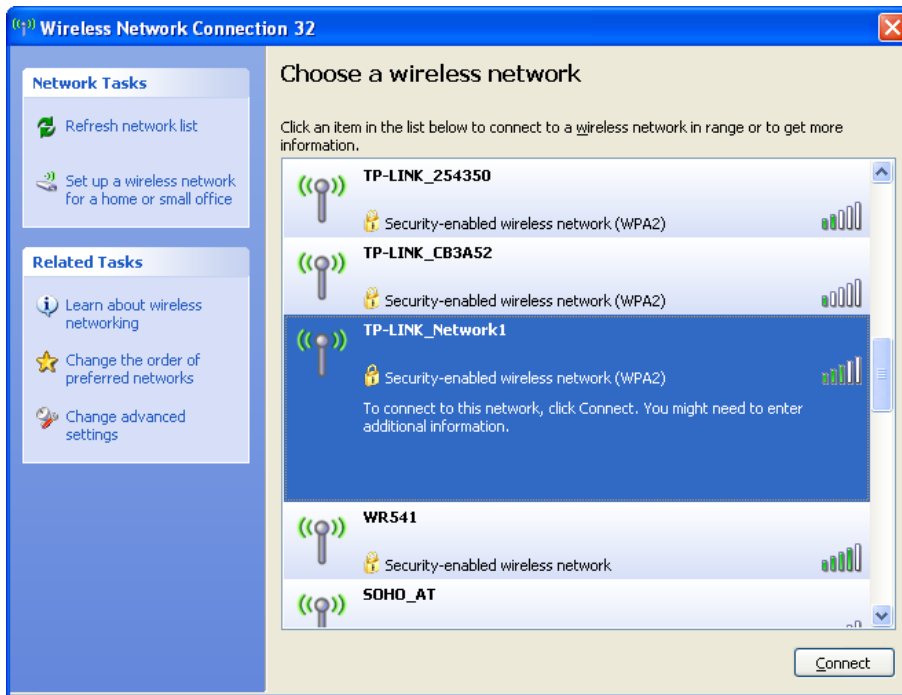


Figure 3-20

4. If the network is security-enabled, you will be prompted to enter the key as shown below. If not, you will connect to the network directly without entering a key.

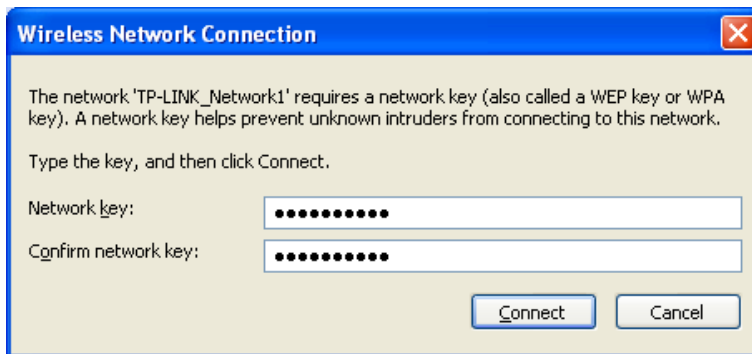



Figure 3-21

### 3.3.2 In Windows 7

Windows 7 users may use the built-in wireless utility. Follow the steps below.

1. Left-click the wireless icon  in your system tray (lower-right corner). The utility will display any available wireless networks in your area. Highlight the wireless network (displayed using the SSID) to be connected and then click **Connect**.

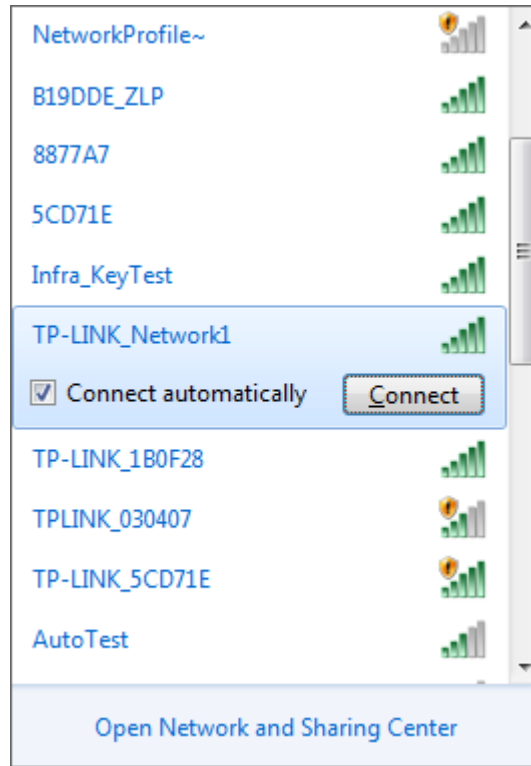


Figure 3-22

2. If the network you would like to connect is encrypted, enter the same security key or passphrase that is on your Router. Or push the WPS/QSS button on the Router or access point (You will be prompted to push the button on the window if WPS function is supported as shown in the figure below). If the network to be connected is not secure, the connection will be built without entering a key.

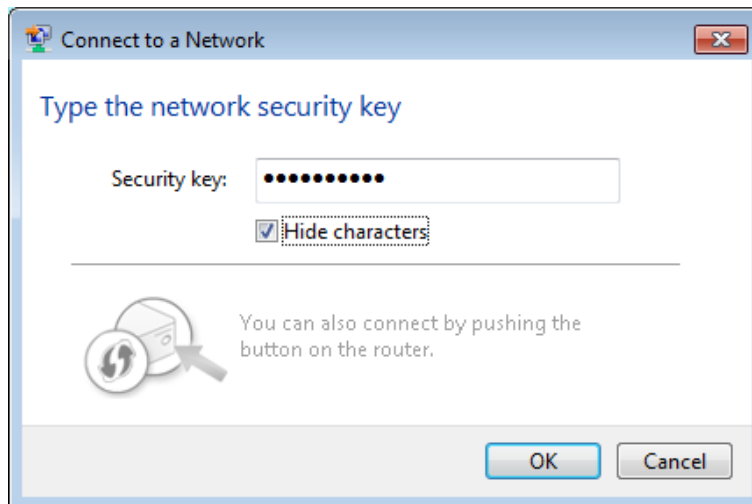


Figure 3-23


3. You have now successfully connected to the network.



Figure 3-24

### 3.3.3 In Windows 8

Windows 8 users may use the built-in wireless utility. Follow the steps below.

1. Click the icon  at the bottom of your screen, and a network list will appear at the right side of your screen. Select your target network, and then click **Connect**.

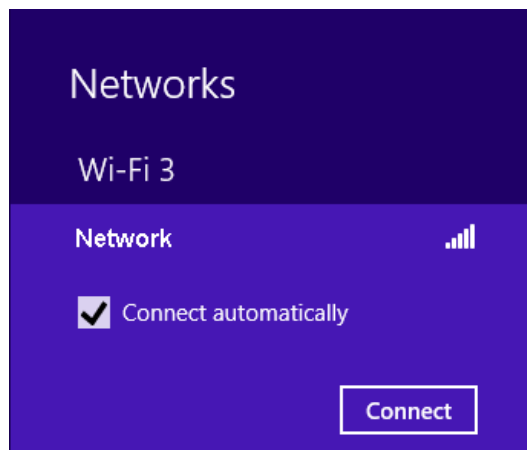


Figure 3-25

2. If the network is unencrypted, you will directly connect to it.  
If the network is encrypted, enter the password (network security key) and then click **Next** to continue.

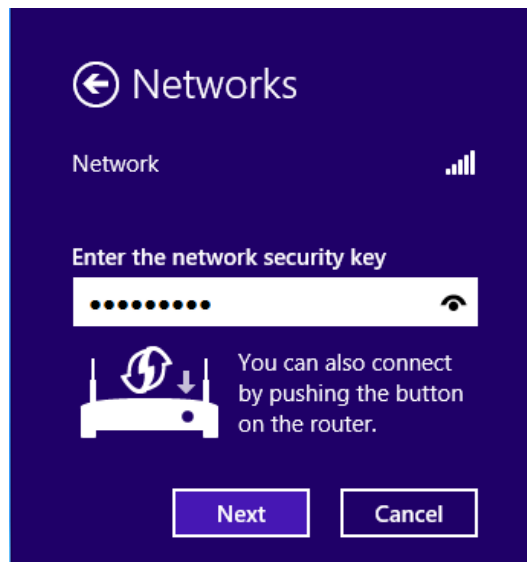


Figure 3-26

 **Note:**

You can also push the WPS/QSS button on your router as hinted “You can also connect by pushing the button on the router”. Then click **Next** to continue.

3. When Connected appears behind the SSID (as shown below), you have successfully connected to the target network.

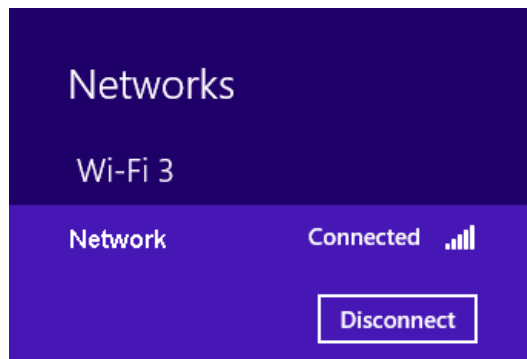


Figure 3-27

 **Note:**

If the adapter is connected to the network for the first time, you will be asked whether to turn on sharing or connect to devices. Please select “Yes, ...” or “No, ...” according to your Internet environment.

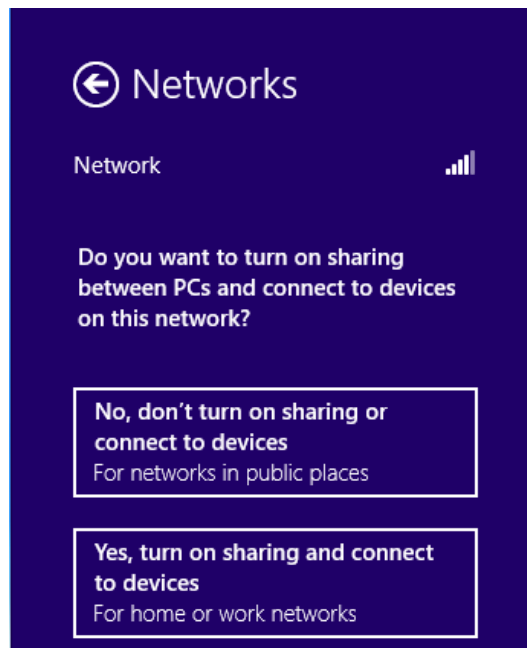



Figure 3-28

### 3.3.4 In Windows 8.1

Windows 8.1 users may use the built-in wireless utility. Follow the steps below.

1. Click the icon  at the bottom of your screen, and a network list will appear at the right side of your screen. Select your target network, and then click **Connect**.

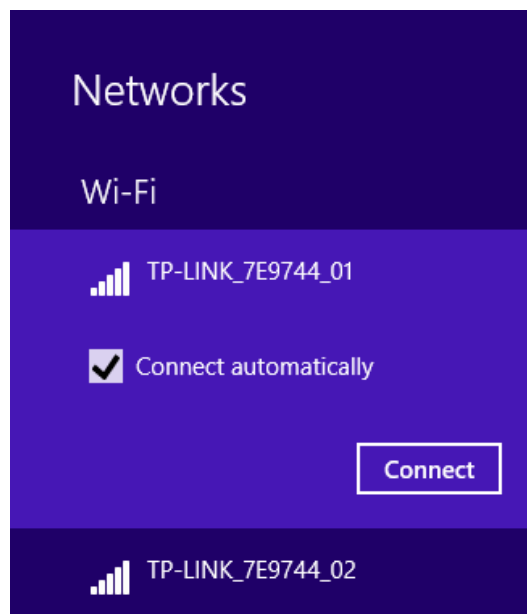


Figure 3-29

2. If the network is unencrypted, you will directly connect to it. If the network is encrypted, enter the password (network security key) and then click **Next** to continue.



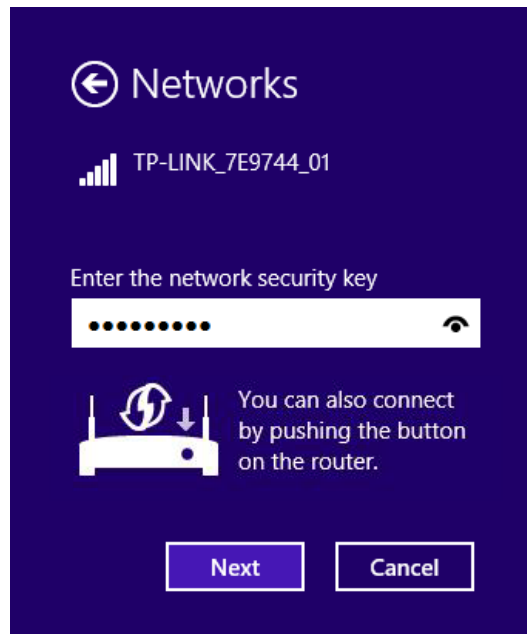


Figure 3-30

 **Note:**

You can also push the WPS/QSS button on your router as hinted “You can also connect by pushing the button on the router”. Then click **Next** to continue.

3. When Connected appears behind the SSID (as shown below), you have successfully connected to the target network.

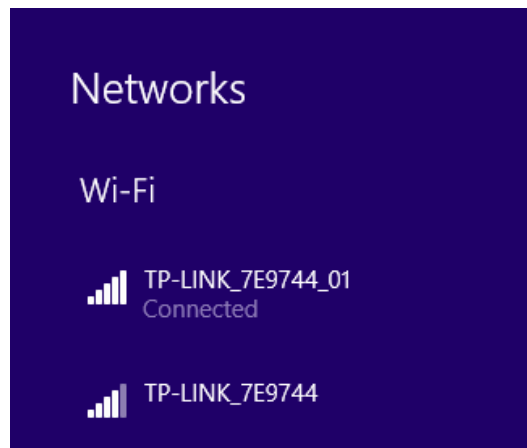


Figure 3-31

 **Note:**

If the adapter is connected to the network for the first time, you will be asked whether to connect to devices. Please select “Yes” or “No” according to your Internet environment.

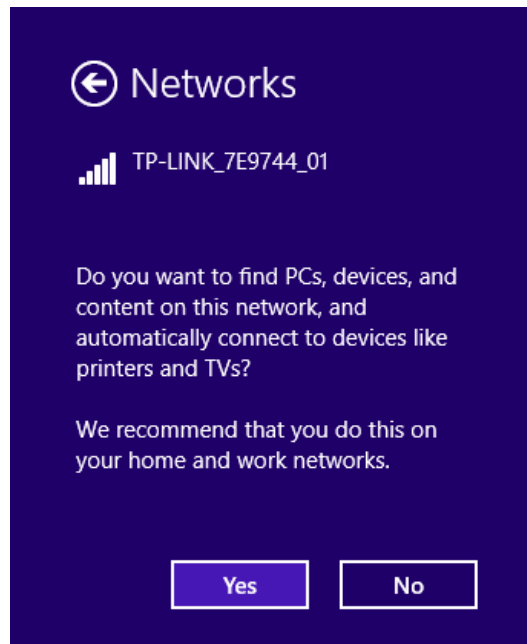



Figure 3-32

## Chapter 4 Management

This section will show you how to configure your Archer T8E/Archer T9E adapter using the TP-LINK Wireless Configuration Utility (TWCU).

The Archer T8E/Archer T9E adapter uses the TP-LINK Wireless Configuration Utility as the management software. The utility provides users with an easy interface to change any settings related to the adapter. Double-clicking on the  icon on your desktop will start the utility.

### 4.1 Profile

Your wireless networks may vary in different places like home, office or coffee shop. With **Profile** management, you can easily save and manage various networks to be connected, saving you the trouble of having to repeat the same configurations. Click **Profile** in the tools section, the following page will appear.

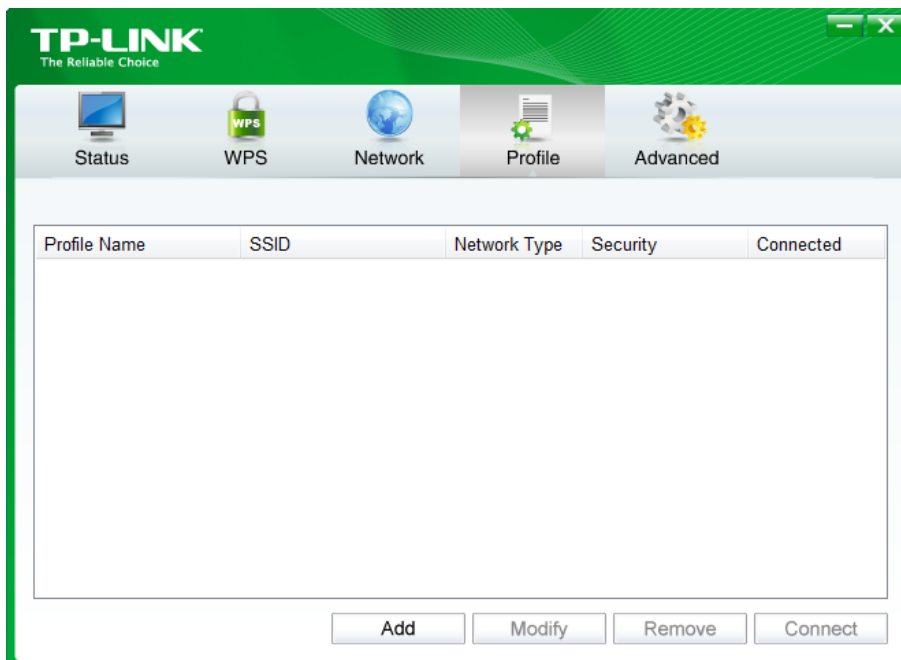


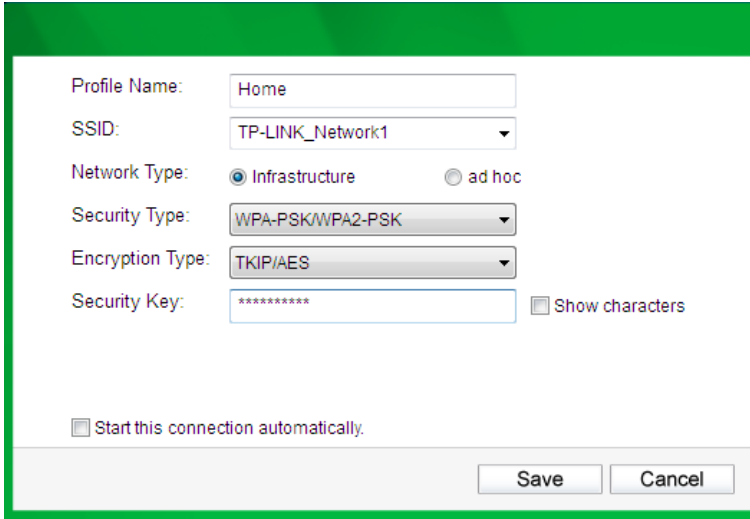
Figure 4-1

#### 4.1.1 Add a profile

To add a profile, click the **Add** button on the bottom of the screen. Then the configuration window will appear.

##### 4.1.1.1. Add a profile in Infrastructure mode

If you are connecting to a wireless router or access point, select **Infrastructure** as the Network Type in the screen that appears and follow the instructions below to finish the setting.

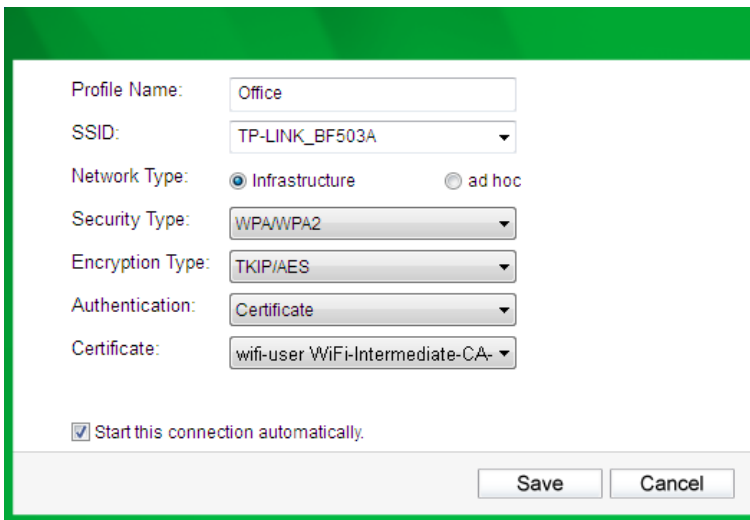


The screenshot shows a configuration window for a wireless network profile. The fields are as follows:

- Profile Name: Home
- SSID: TP-LINK\_Network1
- Network Type: Infrastructure (selected), ad hoc
- Security Type: WPA-PSK/WPA2-PSK
- Encryption Type: TKIP/AES
- Security Key: \*\*\*\*\* (with a "Show characters" checkbox)
- Start this connection automatically: (unchecked)

Buttons: Save, Cancel

Figure 4-2



The screenshot shows a configuration window for a wireless network profile. The fields are as follows:

- Profile Name: Office
- SSID: TP-LINK\_BF503A
- Network Type: Infrastructure (selected), ad hoc
- Security Type: WPA/WPA2
- Encryption Type: TKIP/AES
- Authentication: Certificate
- Certificate: wifi-user WiFi-Intermediate-CA
- Start this connection automatically: (checked)

Buttons: Save, Cancel

Figure 4-3

The following items can be found on the screen.

- **Profile Name:** Enter a name for your profile (e.g. Home, Office, Coffee Shop). The same name is not allowed. Please also note that no space is allowed between words.
- **SSID:** Select the target network from the drop-down list.
- **Network Type:** Select the network type. If you are connecting to a wireless Router or access point, select **Infrastructure**. If you are connecting to another wireless client such as an adapter, select **ad-hoc**.
- **Security Type:** Select the security type from the list. Four options are available: **WPA-PSK/WPA2-PSK**, **WPA/WPA2**, **WEP** and **None**. The security type should be the same as on your Router or access point, otherwise, you will not be able to build a successful connection. **WPA-PSK/WPA2-PSK** uses a passphrase or key to authenticate your wireless connection. The key must be the exact same key entered on your wireless Router or access point. **None** stands for no security. It's recommended to enable WPA-PSK/WPA2-PSK on your wireless Router or access point before configuring your wireless adapter.

**Note:**

You will see Figure 4-2 if you selected the security type **WPA-PSK/WPA2-PSK**; while, if you selected the security type **WPA/WPA2**, Figure 4-3 will be displayed.

- **Encryption Type:** From the drop-down menu, select the encryption type that is the same as on your Router or access point.
- **Security Key:** Enter the passphrase exactly as it is on your wireless Router or access point. Click the **Show characters** box to see the passphrase, or uncheck this box to hide it.
- **Authentication:** Select a type of authentication, either **certificate** or **password**.
- **Certificate:** If you select **certificate** as your **Authentication**, then you need to specify your certificate from the drop-down list here.
- **Start this connection automatically:** Check this box to automatically connect to this network next time.
- **Save:** Click **Save** to save your settings.

Having completed the above settings, the Profile page should look like the following figure. To connect to a desired network, just highlight the network you would like to connect to and click the **Connect** button on the bottom of the window. Then click **OK** in Figure 4-5 to activate the profile.

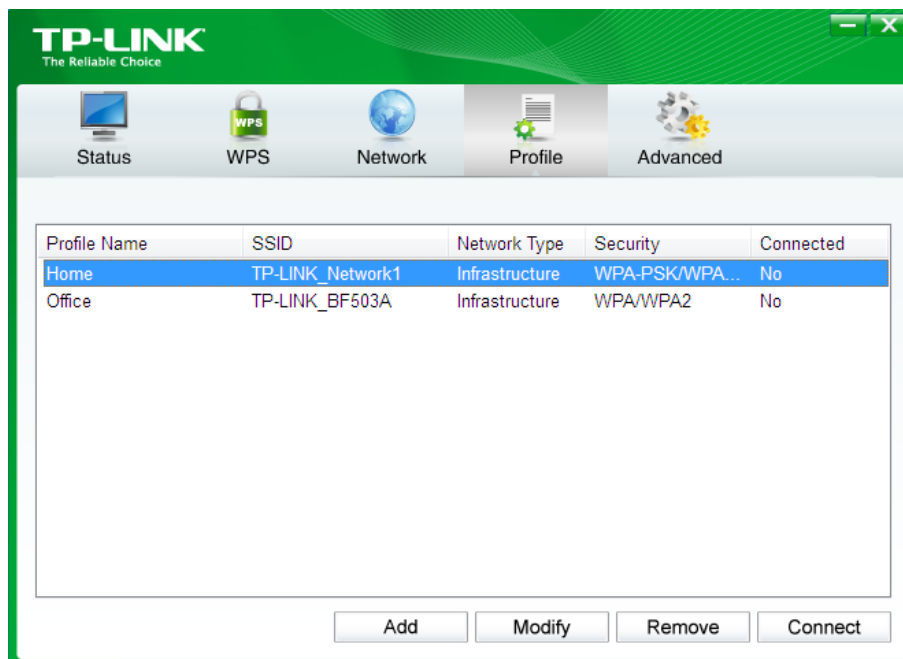


Figure 4-4

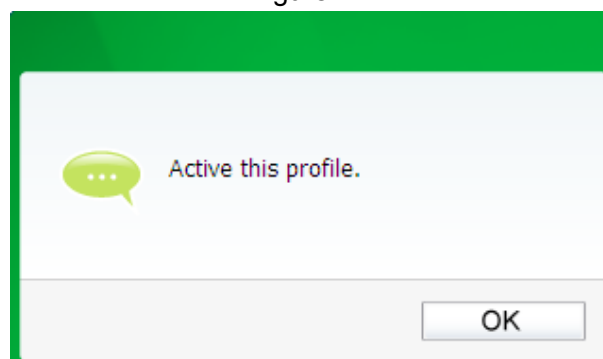


Figure 4-5

#### 4.1.1.2. Add a profile in ad hoc mode (not available in Windows 8.1)

If you are connecting to another wireless client such as an adapter, select **ad hoc** as the Network Type in the screen that appears and follow the instructions below to finish the setting.

Figure 4-6

The following items can be found on the screen.

- **Profile Name:** Enter a name for your profile e.g. Home, Office, Coffee Shop. The same name is not allowed. Please also note that no space is allowed between words.
- **SSID:** Select the target network from the drop-down list.
- **Network Type:** Select the network type. If you are connecting to a wireless router or access point, select **Infrastructure**. If you are connecting to another wireless client such as an adapter, select **ad hoc**.
- **Band:** This item determines which operating frequency will be used. Two options are available: 2.4Ghz and 5Ghz. It is recommended that your computers and devices running video and voice applications use the 5Ghz band, while your guest access and computers that are only browsing the web use the 2.4Ghz band.
  - **2.4Ghz** - You can use the 2.4GHz band to connect to many classic wireless devices like gaming consoles, laptops, DVRs, ect.
  - **5Ghz** - This band is less crowded and is used for time-sensitive music, video streaming or gaming. Using this band can avoid interference with 2.4GHz networks or noisy devices like cordless phones and microwave ovens.

 **Note:**

The choice for **Band** is only available in Windows XP; while in Windows 7 and Windows 8, by default it only supports 2.4 G network in Ad-hoc mode.

- **Security Type:** Select the security type from the list. Two options are available: **WEP** and **None**. **None** stands for no security. It is recommended that you select WEP to secure your wireless network.
- **Encryption Type:** If you select **None** as the Security Type, the Encryption Type will be **None** accordingly. If you select **WEP** as the Security Type, the Encryption Type will be **Open**.

- **Key Index:** You can select **ASCII** or **Hexadecimal** format on the right. ASCII format stands for any combination of keyboard characters in the specified length. Hexadecimal format stands for any combination of hexadecimal digits (0-9, a-f, A-F) in the specified length.
  - For **64-bit** encryption - You can enter 10 hexadecimal digits (any combination of 0-9, a-f, A-F, zero key is not permitted) or 5 ASCII characters.
  - For **128-bit** encryption - You can enter 26 hexadecimal digits (any combination of 0-9, a-f, A-F, zero key is not permitted) or 13 ASCII characters.
- **Security Key:** Enter the passphrase. Click the **Show characters** box to see the passphrase. Unchecking it will hide it.
- **Start this connection automatically:** Check this box to automatically connect to this network next time.
- **Save:** Click **Save** to save your settings.

Having completed the above settings, the Profile page should look like the following figure. To connect to a desired network, just highlight the network you would like to connect to and click the **Connect** button on the bottom of the window. Then click **OK** in Figure 4-8 to activate the profile.

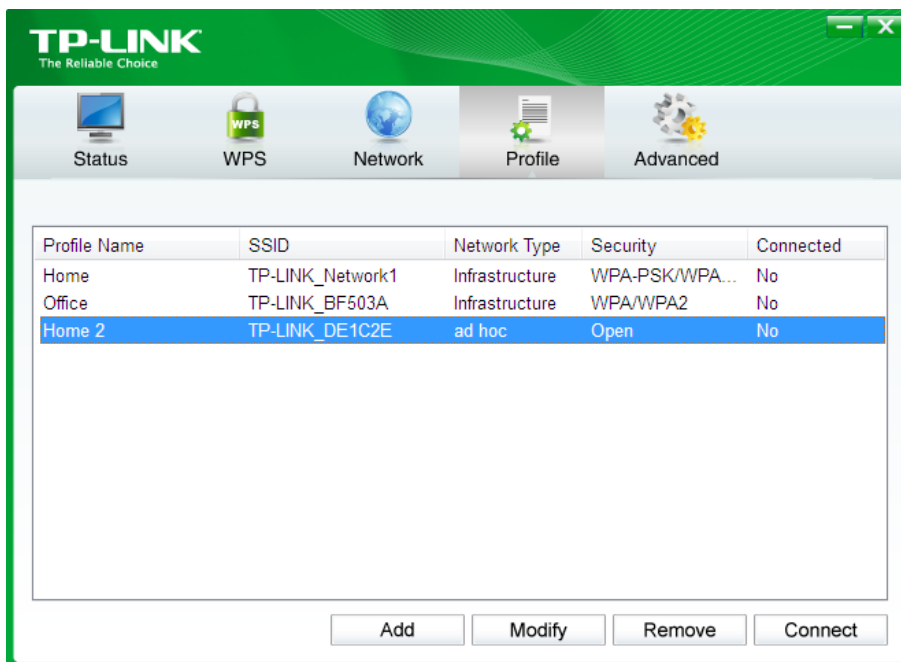


Figure 4-7

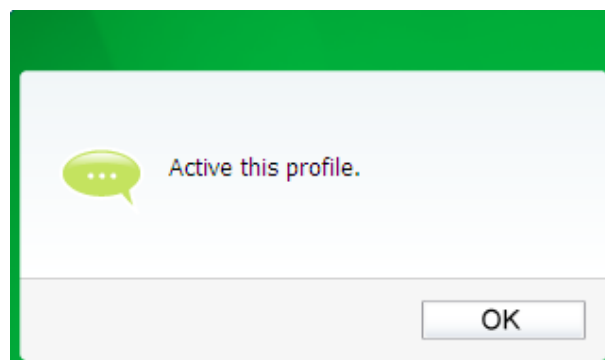


Figure 4-8

### 4.1.2 Modify a profile

You may edit an existing profile by clicking the **Modify** button from the Profile page. For instance, you may like to change the profile name from Home to Home1 or you may want to specify another SSID for profile Home. After all the changes, click **Save** to make the changes take effect.

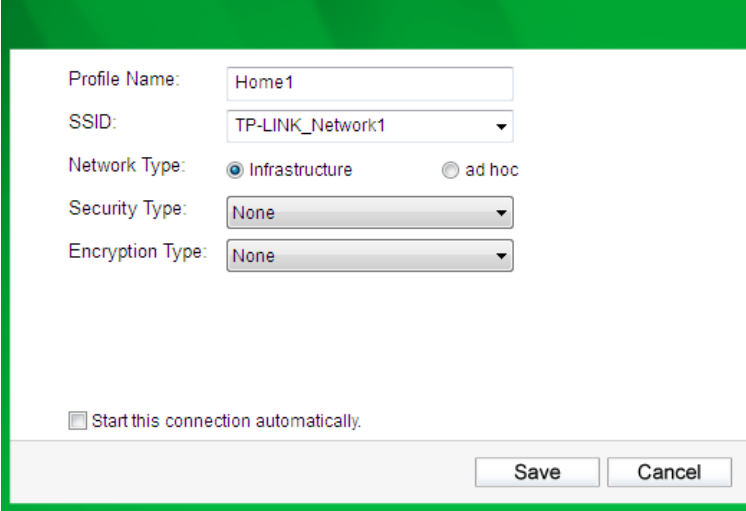


Figure 4-9

### 4.1.3 Delete a profile

To delete an existing profile, highlight the profile name and click **Remove** on the bottom of the screen or press the Delete button on your keyboard. When the following figure appears, click **OK** to continue.

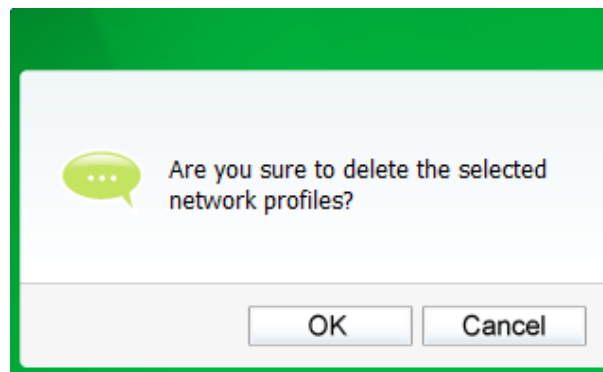


Figure 4-10

## 4.2 Advanced

The following configurations can be made on the **Advanced** page:

- 1) To select wireless configuration tool.  
Here you can decide which tool to use, either the TP-LINK Configuration Utility or the Windows wireless configuration tool. (This option is available only in Windows XP.)
- 2) To switch to another wireless network adapter.



Here you can switch to another adapter installed in your computer. The adapters successfully installed in your computer will be listed in the drop-down list if the adapters are supported by this utility.

- 3) To switch to SoftAP mode. (This option is available in Windows 7, Windows 8 and Windows 8.1.)

Once enabled, the adapter will be able to work as an AP.

- 4) To change the power save mode. The default option is OFF.

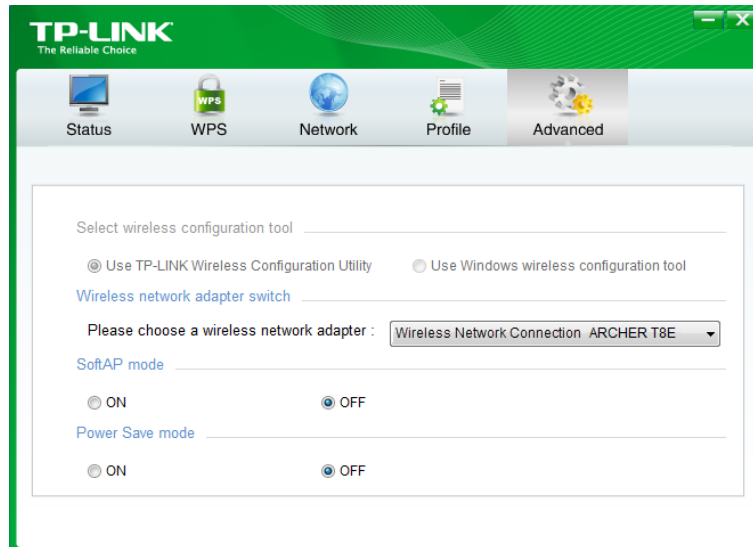



Figure 4-11

### 4.3 About

The About screen gives you some information about the Driver and Utility versions of the adapter. Right-click the  icon in your system tray and select **About** from the list.

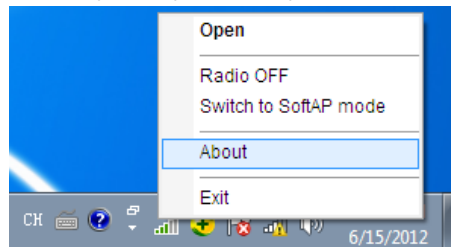


Figure 4-12

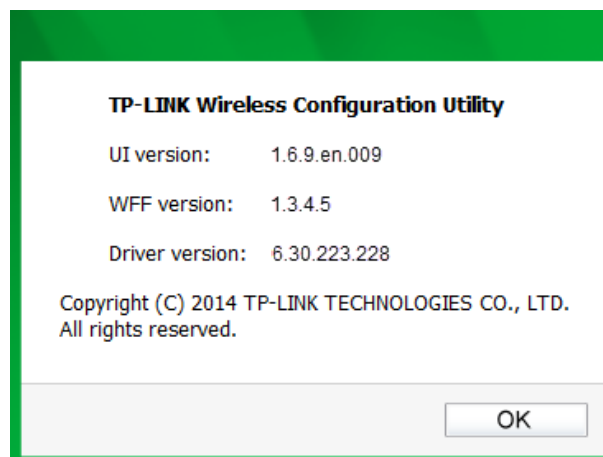


Figure 4-13

## Chapter 5 AP Mode (For Windows 7 and Windows 8)

In Soft AP mode, the adapter will work as an AP. [This function is available in Windows 7 and Windows 8.](#)

Suppose that only one computer in your house can access the Internet for various reasons like only one WLAN port is available on your wired broadband Router, however, other wireless-capable devices also want to share the Internet. Then the adapter can be configured as an AP under the Soft AP mode, saving you the trouble of having to get a separate access point or a Router.

With this feature, a computer can use a single physical wireless adapter to connect as a client to a hardware access point while at the same time acting as a software AP allowing other wireless-capable devices to connect to it.

To switch to this mode, right-click on the utility icon in your system tray and select **Switch to SoftAP mode**.

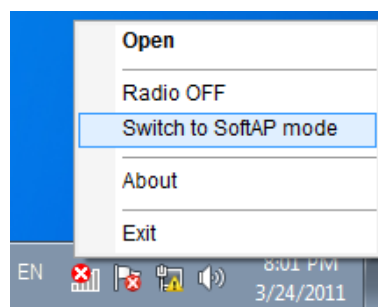


Figure 5-1

Or from the **Advanced** page of the utility, tick **ON** under the **SoftAP mode** as shown in the following figure. Click **OK** when prompted to confirm the setting.

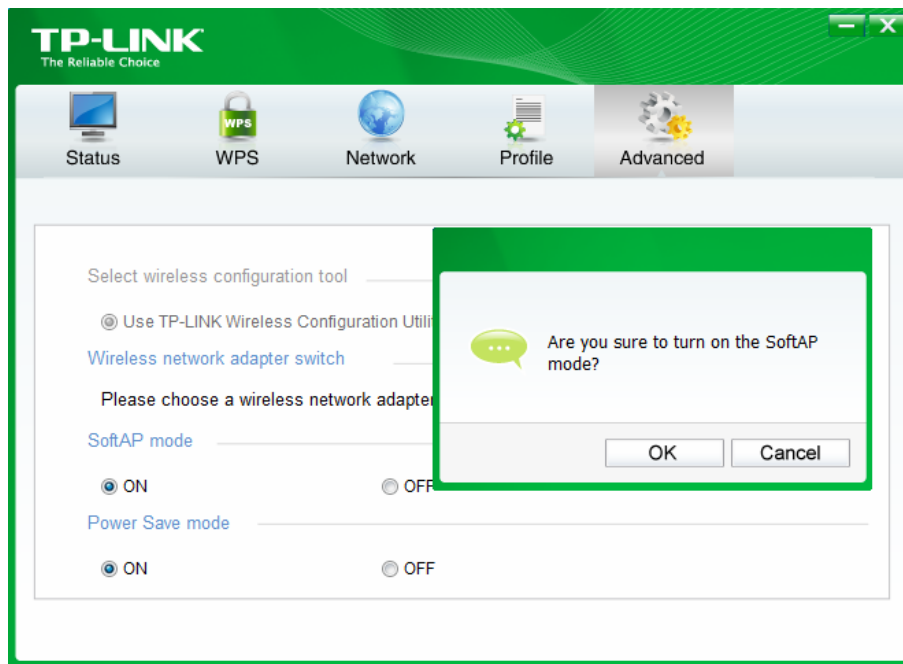


Figure 5-2

The **Soft AP** icon then will appear beside **Advanced** icon in the utility.

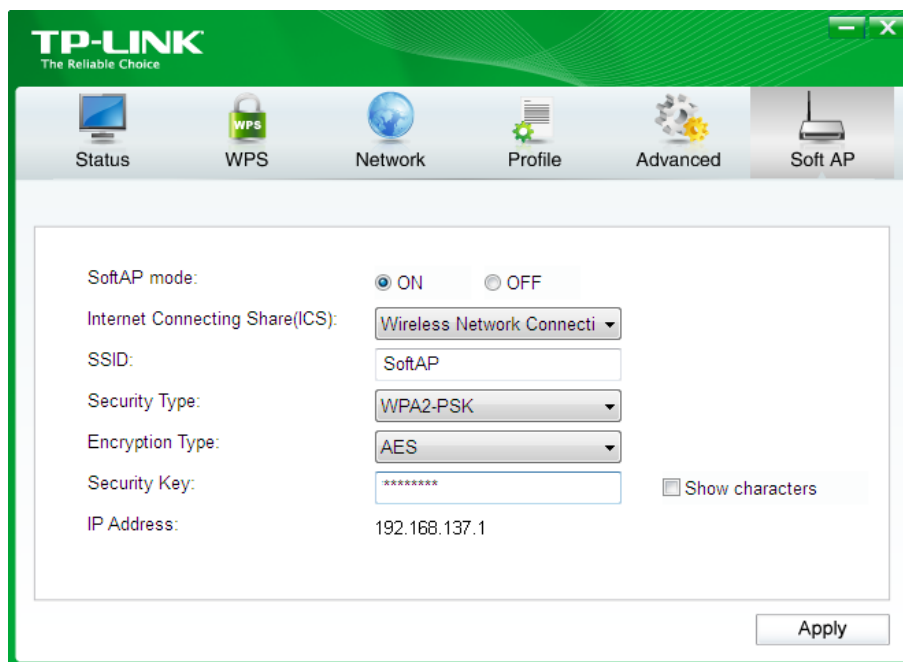


Figure 5-3

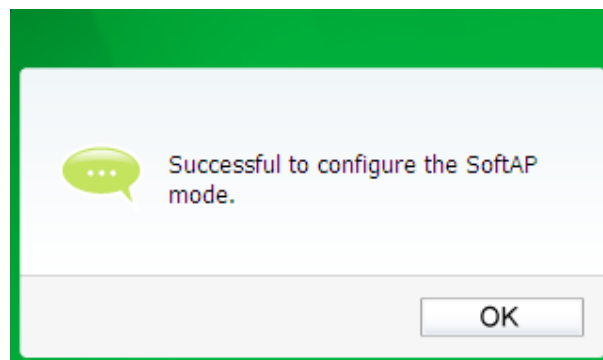


Figure 5-4

- **SoftAP mode:** Select to enable or disable the function.

- **Internet Connecting Share (ICS):** Specify a connection through which devices connected to your AP can access the Internet.
- **SSID:** Enter the name for your soft AP (for example, Jone) so that others can know which AP is yours when trying to connect to it.
- **Security Type:** The security type here is set to be WPA2-PSK which is based on 802.11i and uses AES (Advanced Encryption Standard) instead of TKIP. It was designed to improve the security features of WEP. WPA2-PSK uses a passphrase or key to authenticate your wireless connection. You needn't make any configuration here.
- **Encryption Type:** The encryption type here is set to be AES.
- **Security Key:** Enter the Key in the field to make your AP security enabled. It is recommended that you specify another key instead of the default key 12345678. Only by entering the corresponding key can other computers establish a successful connection with your AP.
- **IP Address:** Here displays the IP address of the SoftAP.

Having completed the above settings, click **Apply**; then Figure 5-4 will pop up, where you click **OK** to make Soft AP mode take effect.

## Chapter 6 Uninstall Software

### 6.1 In Windows XP/7

The software uninstall steps are similar in Windows XP, and Windows 7. Here we just use Windows 7 as an example.

#### 6.1.1 Uninstall the utility software from your PC

1. On the Windows taskbar, click the **Start** button, click **All programs**→**TP-LINK**, and then click **Uninstall-TP-LINK Wireless Configuration Utility**.

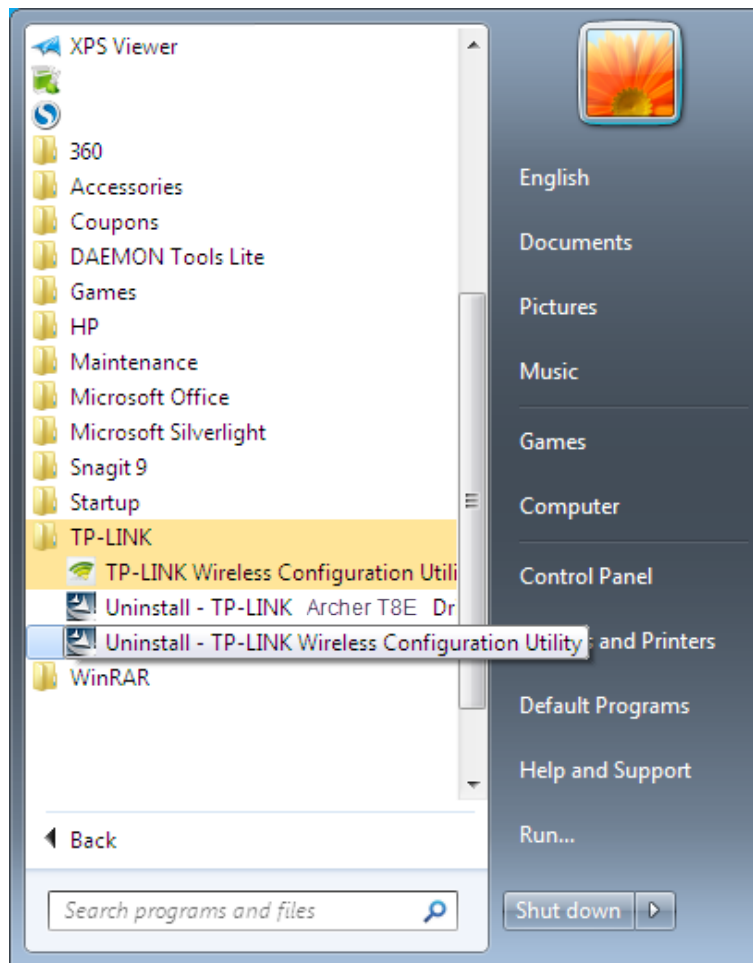


Figure 6-1 Uninstall Utility

2. Click **Yes** to start uninstalling the utility software from your PC.

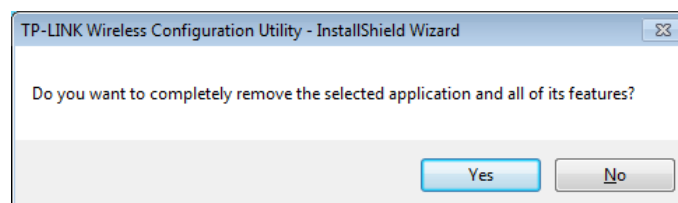


Figure 6-2

3. It may take a few minutes to undergo the whole un-installation process.

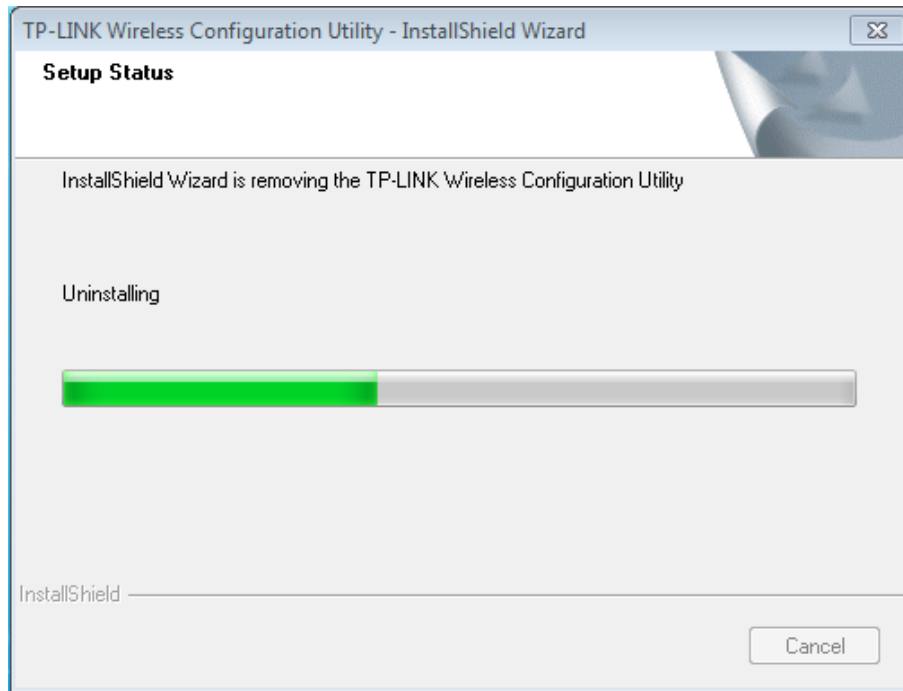


Figure 6-3

4. Click **Finish** when the figure below appears.

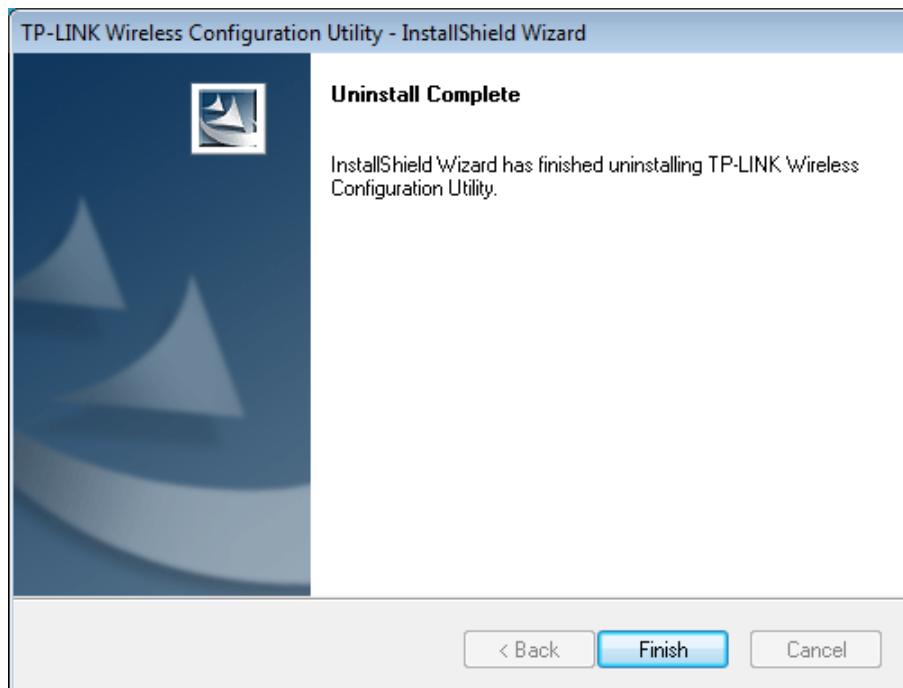


Figure 6-4

### 6.1.2 Uninstall the driver software from your PC

1. On the Windows taskbar, click the **Start** button, click **All programs**→**TP-LINK**, and then click **Uninstall-TP-LINK Archer T8E Driver**.

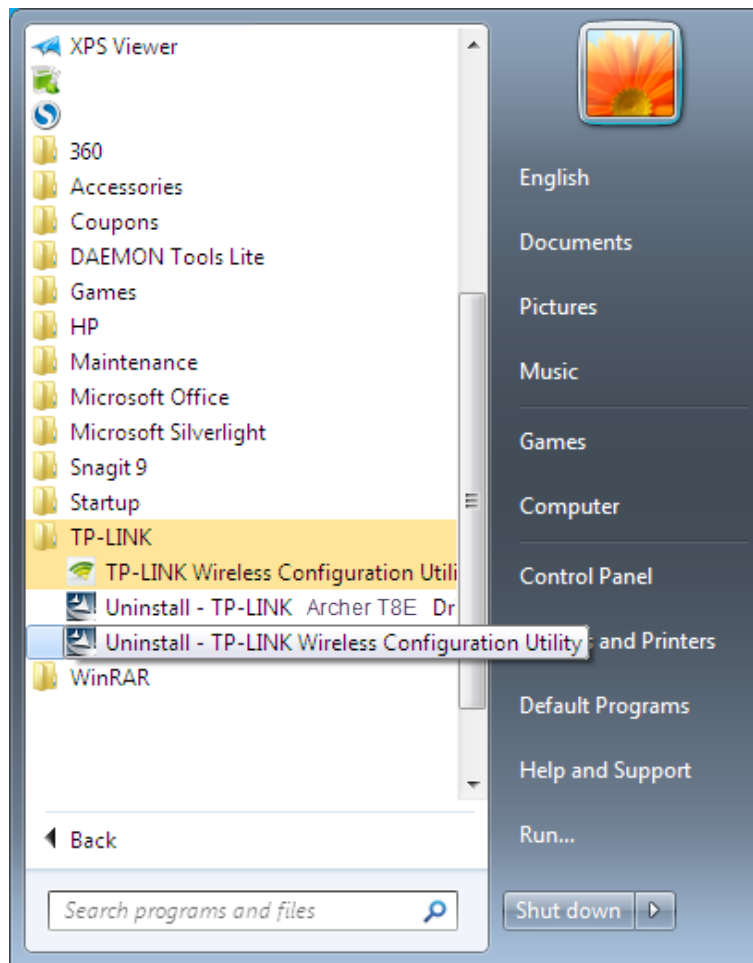


Figure 6-5 Uninstall Driver

2. Click **Yes** to start uninstalling the driver software from your PC.

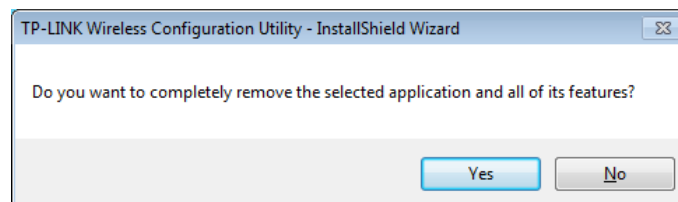


Figure 6-6

3. It may take a few minutes to undergo the whole un-installation process.

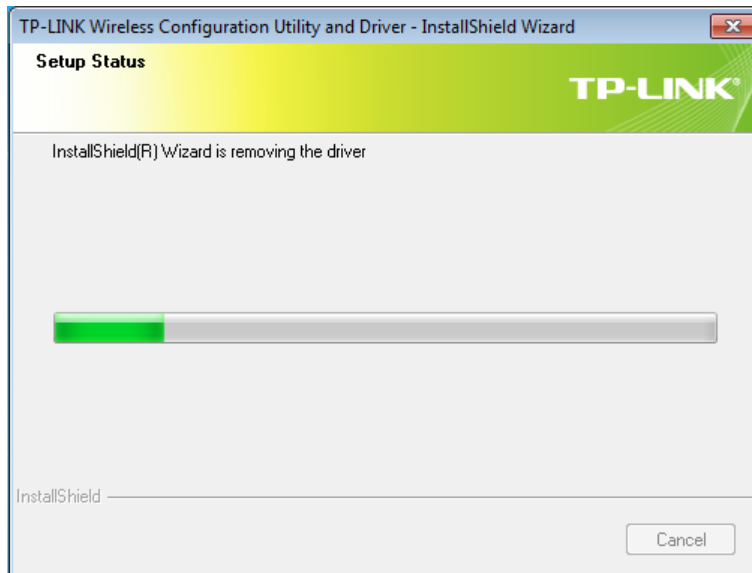


Figure 6-7

4. Click **Finish** when the figure below appears.

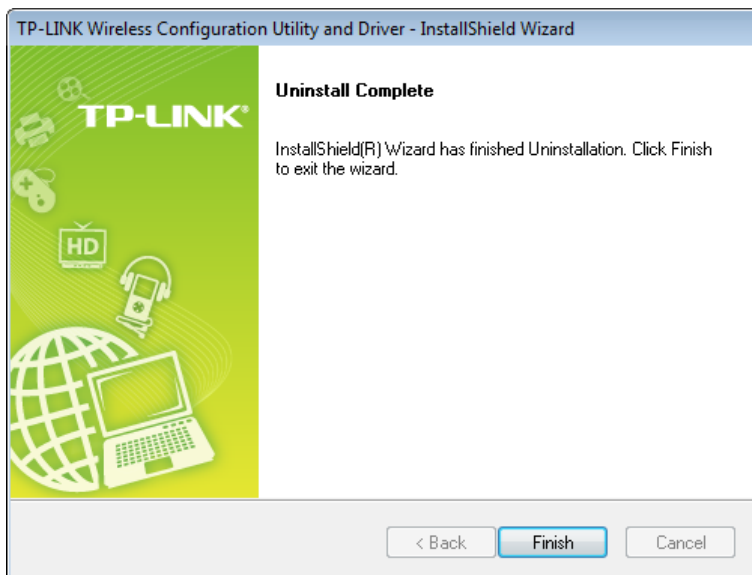


Figure 6-8

## 6.2 In Windows 8/8.1

The software uninstall steps are similar in Windows 8 and Windows 8.1. Here we just use Windows 8 as an example.

### 6.2.1 Uninstall the utility software from your PC

1. Enter the **Metro** interface, right-click any blank place in the Metro interface, then **App Bar** will appear below the Metro interface, click **All apps**. Find the **TP-LINK** application, and click **Uninstall- TP-LINK Wireless Configuration Utility**.



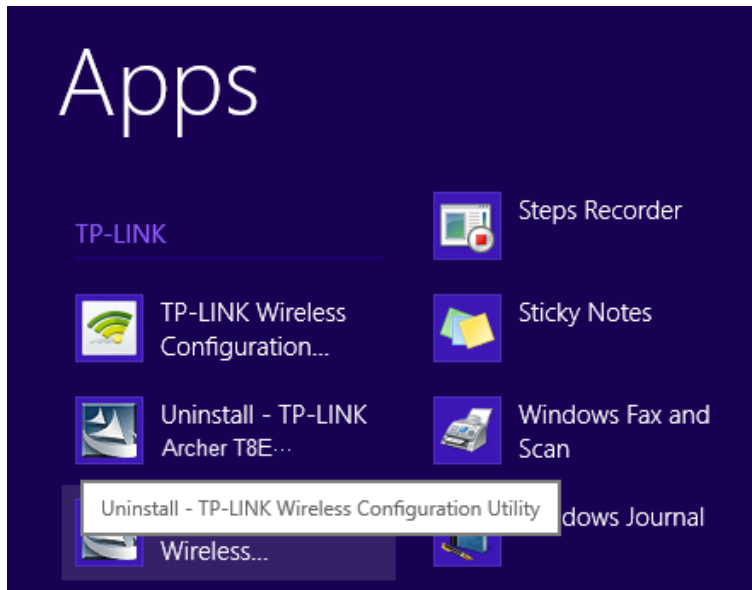


Figure 6-9

2. Click **Yes** to start uninstalling the utility software from your PC.

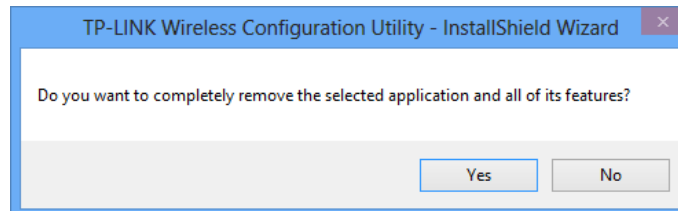


Figure 6-10

3. It may take a few minutes to undergo the whole un-installation process.

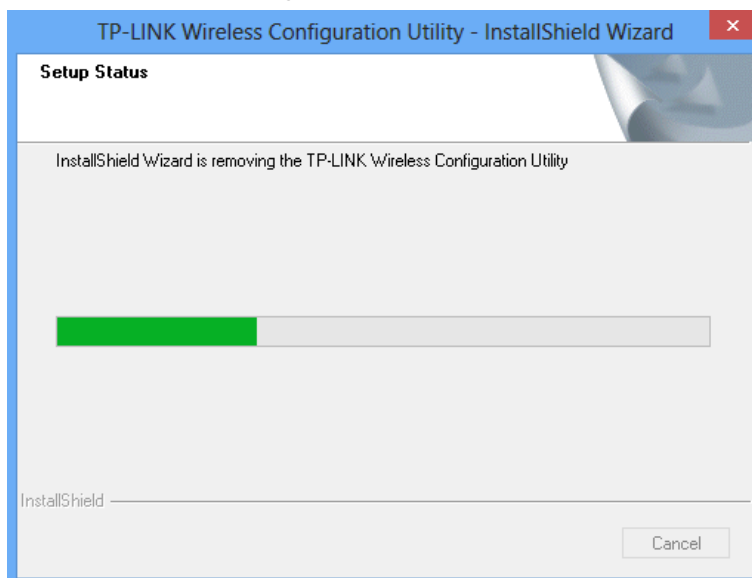


Figure 6-11

4. Click **Finish** when the figure below appears.

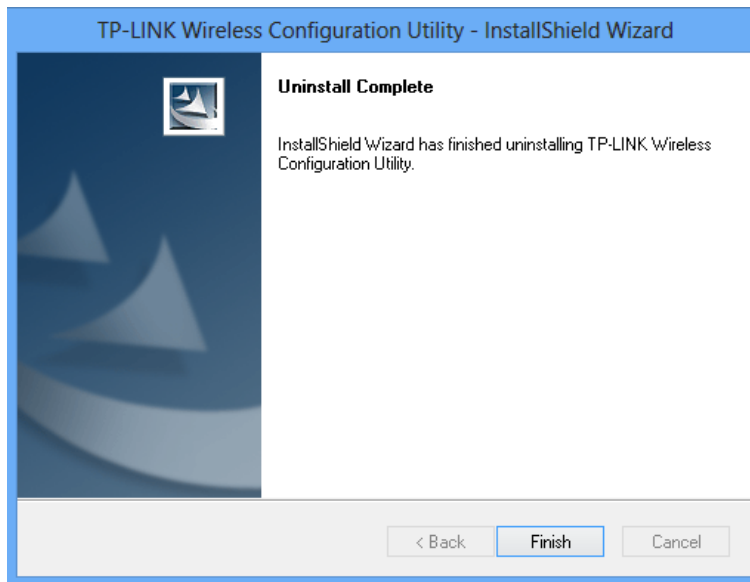


Figure 6-12

### 6.2.2 Uninstall the driver software from your PC

1. Enter the **Metro** interface, right-click any blank place in the Metro interface, then **App Bar** will appear below the Metro interface, click **All apps**. Find the **TP-LINK** application, and click **Uninstall-TP-LINK Archer T8E Driver**.

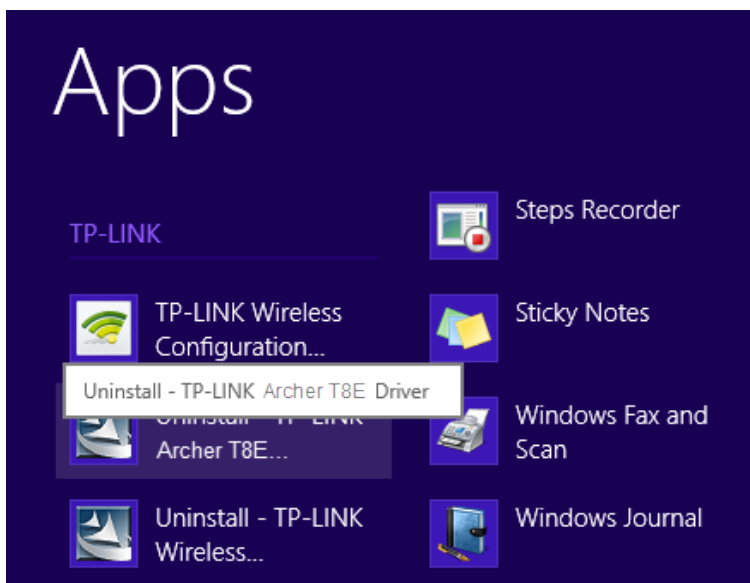


Figure 6-13

2. Click **Yes** to start uninstalling the driver software from your PC.

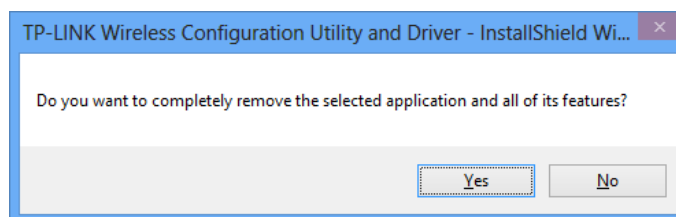


Figure 6-14

3. It may take a few minutes to undergo the whole un-installation process.

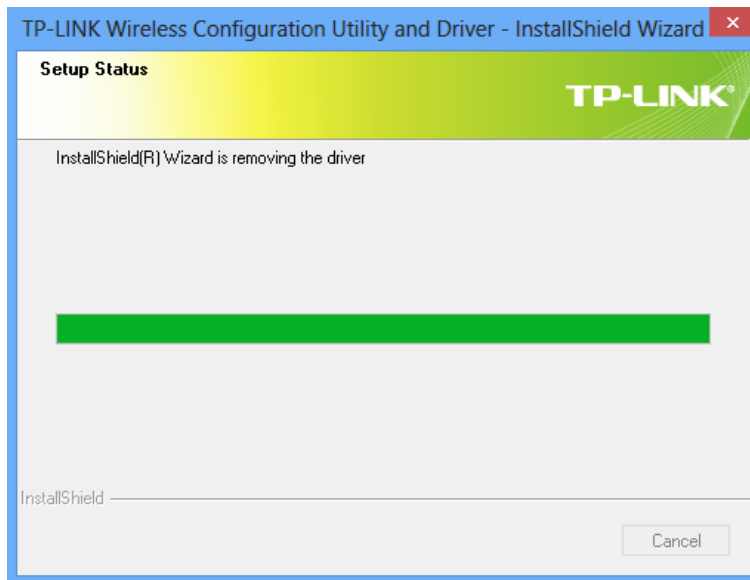


Figure 6-15

4. Click **Finish** when the figure below appears.

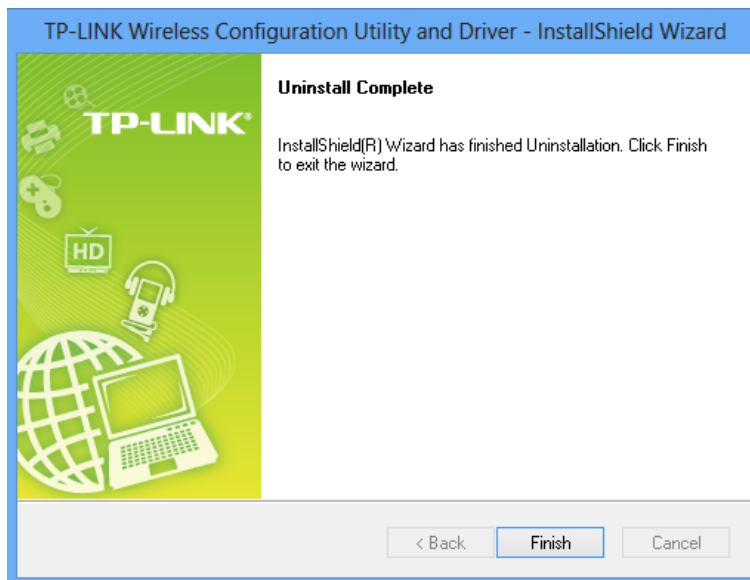


Figure 6-16

## Appendix A: Specifications

Normal	
Interface	PCI Express x1
Standards	IEEE802.11ac; IEEE802.11a; IEEE802.11b; IEEE802.11g; IEEE802.11n; IEEE802.11e; IEEE802.1x
Operating System	Windows XP, Windows 7, Windows 8, Windows 8.1
Throughput	1300Mbps (Maximal)
Radio Data Rate	11a: 6/9/12/18/24/36/48/54Mbps 11b: 1/2/5.5/11Mbps 11g: 6/9/12/18/24/36/48/54Mbps 11n: 450Mbps (2.4GHz), 450Mbps (5GHz) 11ac: 600Mbps (2.4GHz), 1300Mbps (5GHz)
Modulation	11a: OFDM 11b: CCK, QPSK, BPSK; 11g: OFDM; 11n: QPSK, BPSK, 16-QAM, 64-QAM
Media Access Protocol	CSMA/CA with ACK
Data Security	WEP, WPA / WPA2, WPA-PSK / WPA2-PSK
Frequency*	2.4 ~ 2.4835 GHz, 5.180 ~ 5.240 GHz, 5.260 ~ 5.320 GHz, 5.745 ~ 5.825 GHz
Spread Spectrum	Direct Sequence Spread Spectrum (DSSS)
Safety & Emissions	FCC, CE, WIFI, IC, NCC, WHQL

Environmental and Physical	
Working Temperature	0°C~40°C (32°F~104°F)
Storage Temperature	-40°C~70°C (-40°F~158°F)
Working Humidity	10% ~ 90% RH, Non-condensing
Storage Humidity	5% ~ 90% RH, Non-condensing

\* 1. Only 2.412GHz~2.462GHz is allowed to be used in USA, which means only channel 1~11 is available for American users to choose.

\* 2. Rules on the use of 5GHz band channels may vary according to different national laws.

## Appendix B: Glossary

- **802.11ac** - IEEE 802.11ac is a wireless computer networking standard of 802.11. This specification will enable multi-station WLAN throughput of at least 1 gigabit per second. This is accomplished by extending the air interface concepts embraced by 802.11n: wider RF bandwidth, more MIMO spatial streams, multi-user MIMO, and high-density modulation (up to 256 QAM).
- **802.11a** - specification for wireless networking at 54 Mbps using OFDM modulation and operating in radio band at 5GHz.
- **802.11b** - The 802.11b standard specifies a wireless product networking at 11 Mbps using direct-sequence spread-spectrum (DSSS) technology and operating in the unlicensed radio spectrum at 2.4GHz, and WEP encryption for security. 802.11b networks are also referred to as Wi-Fi networks.
- **802.11g** - specification for wireless networking at 54 Mbps using direct-sequence spread-spectrum (DSSS) technology, using OFDM modulation and operating in the unlicensed radio spectrum at 2.4GHz, and backward compatibility with IEEE 802.11b devices, and WEP encryption for security.
- **802.11n** - 802.11n builds upon previous 802.11 standards by adding MIMO (multiple-input multiple-output). MIMO uses multiple transmitter and receiver antennas to allow for increased data throughput via spatial multiplexing and increased range by exploiting the spatial diversity, perhaps through coding schemes like Alamouti coding. The Enhanced Wireless Consortium (EWC) was formed to help accelerate the IEEE 802.11n development process and promote a technology specification for interoperability of next-generation wireless local area networking (WLAN) products.
- **Ad hoc Network** - An ad hoc network is a group of computers, each with a Wireless Adapter, connected as an independent 802.11 wireless LAN. Ad hoc wireless computers operate on a peer-to-peer basis, communicating directly with each other without the use of an access point. Ad hoc mode is also referred to as an Independent Basic Service Set (IBSS) or as peer-to-peer mode, and is useful at a departmental scale or SOHO operation.
- **DSSS - (Direct-Sequence Spread Spectrum)** - DSSS generates a redundant bit pattern for all data transmitted. This bit pattern is called a chip (or chipping code). Even if one or more bits in the chip are damaged during transmission, statistical techniques embedded in the receiver can recover the original data without the need of retransmission. To an unintended receiver, DSSS appears as low power wideband noise and is rejected (ignored) by most narrowband receivers. However, to an intended receiver (i.e. another wireless LAN endpoint), the DSSS signal is recognized as the only valid signal, and interference is inherently rejected (ignored).
- **FHSS - (Frequency Hopping Spread Spectrum)** - FHSS continuously changes (hops) the carrier frequency of a conventional carrier several times per second according to a pseudo-random set of channels. Because a fixed frequency is not used, and only the transmitter and receiver know the hop patterns, interception of FHSS is extremely difficult.

- **Infrastructure Network** - An infrastructure network is a group of computers or other devices, each with a Wireless Adapter, connected as an 802.11 wireless LAN. In infrastructure mode, the wireless devices communicate with each other and to a wired network by first going through an access point. An infrastructure wireless network connected to a wired network is referred to as a Basic Service Set (BSS). A set of two or more BSS in a single network is referred to as an Extended Service Set (ESS). Infrastructure mode is useful at a corporation scale, or when it is necessary to connect the wired and wireless networks.
- **Spread Spectrum** - Spread Spectrum technology is a wideband radio frequency technique developed by the military for use in reliable, secure, mission-critical communications systems. It is designed to trade off bandwidth efficiency for reliability, integrity, and security. In other words, more bandwidth is consumed than in the case of narrowband transmission, but the trade off produces a signal that is, in effect, louder and thus easier to detect, provided that the receiver knows the parameters of the spread-spectrum signal being broadcast. If a receiver is not tuned to the right frequency, a spread-spectrum signal looks like background noise. There are two main alternatives, Direct Sequence Spread Spectrum (DSSS) and Frequency Hopping Spread Spectrum (FHSS).
- **SSID** - A **S**ervice **S**et **I**dentification is a thirty-two character (maximum) alphanumeric key identifying a wireless local area network. For the wireless devices in a network to communicate with each other, all devices must be configured with the same SSID. This is typically the configuration parameter for a wireless PC card. It corresponds to the ESSID in the wireless Access Point and to the wireless network name. See *also* Wireless Network Name and ESSID.
- **WEP** - (**W**ired **E**quivalent **P**rivacy) - A data privacy mechanism based on a 64-bit or 128-bit or 152-bit shared key algorithm, as described in the IEEE 802.11 standard. To gain access to a WEP network, you must know the key. The key is a string of characters that you create. When using WEP, you must determine the level of encryption. The type of encryption determines the key length. 128-bit encryption requires a longer key than 64-bit encryption. Keys are defined by entering in a string in HEX (hexadecimal - using characters 0-9, A-F) or ASCII (American Standard Code for Information Interchange – alphanumeric characters) format. ASCII format is provided so you can enter a string that is easier to remember. The ASCII string is converted to HEX for use over the network. Four keys can be defined so that you can change keys easily.
- **Wi-Fi** - A trade name for the 802.11b wireless networking standard, given by the Wireless Ethernet Compatibility Alliance (WECA, see <http://www.wi-fi.net>), an industry standards group promoting interoperability among 802.11b devices.
- **WLAN** - (**W**ireless **L**ocal **A**rea **N**etwork) - A group of computers and associated devices communicate with each other wirelessly, which network serving users are limited in a local area.
- **WPA** - (**W**i-Fi **P**rotected **A**ccess) - A wireless security protocol uses TKIP (Temporal Key Integrity Protocol) encryption, which can be used in conjunction with a RADIUS server.