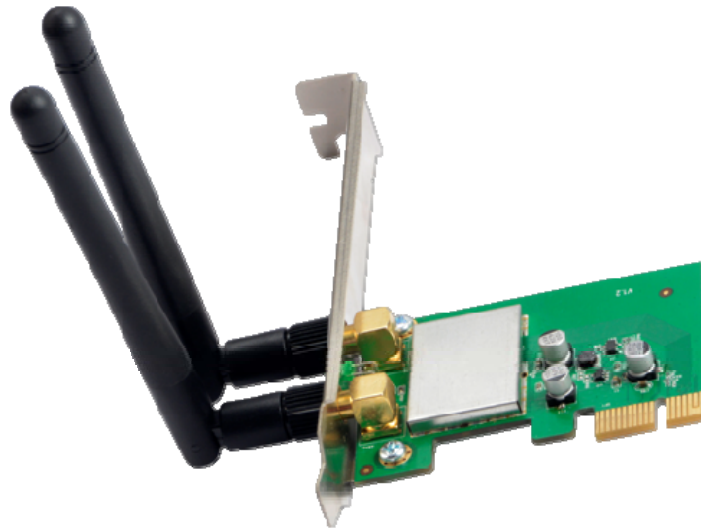


Trend-tech AC1200 Dual-band Wireless PCI-e Adapter Model No. WNA015



User Manual

Table of Contents

Chapter 1 Product Introduction	1
1.1 Product Overview	1
1.2 Product Features	1
1.3 Security Warning.....	1
1.4 LED's Description	1
1.5 Package Contents	2
Chapter 2 Installation Guide	3
Chapter 3 Connect Wireless Network	6
Appendix: Technical Specifications	8

Chapter 1 Product Introduction

Congratulations on your purchasing of the AC1200 Dual-band Wireless PCI-E Adapter. Before you install and use this product, please read this manual carefully for full exploiting the functions of this product.

1.1 Product Overview

The product is a highly integrated and cost-effective Wireless Adapter that provides PCI Express interface, and full compliance with IEEE 802.11ac and IEEE 802.11a/b/g/n standards. Wireless transmission rates can reach up to 867Mbps. Using the Wireless Desktop PCI-E Adapter not only can you connect your desktop computer to a high-speed Wi-Fi network and experience faster files transmission and high-speed Internet browsing from further distances across your home than that in previous-generation Wireless G technology, but also you can enjoy high performance wireless viewing HD multimedia and real-time online war game when the PCI-E Adapter work in 11AC 5G mode. This Desktop PCI-E Adapter is the best choice for the desktop computer users who want to enjoy a better wireless performance and high-speed Wi-Fi network.

1.2 Product Features

- Complies with IEEE 802.11ac, IEEE 802.11n and IEEE 802.11a/b/g standards
- Supports PCI-E 1.1 X1 bus
- Supports 20MHz/40MHz/80MHz bandwidth
- Supports IEEE802.11e QoS Enhancement (WMM)
- Supports IEEE802.11h TPC
- Supports WAPI certified
- Supports Cisco CCS
- Supports multiple BSSID

1.3 Security Warning

- Please install and use this product until you complete to read this user manual.
- In order to guarantee the product to work correctly, please pay attention to the waterproofing and damp proofing.
- Prevent some harmful substances (such as acid, alkali, etc).
- Please do not use this product placed directly in the sun or other sources of heat.
- If a failure occurs, please contact our customer service dept, do not open this product by yourself.

1.4 LED's Description

In the front of the wireless card, there is a status indicator. It will flash while a normal data communication.

1.5 Package Contents

- 11AC Dual-band Wireless PCI-E Adapter
- Use CD-ROM
- Warranty card

Chapter 2 Installation Guide

This section will teach you the process of installing the network adapter software package with including software CD.

Take Windows XP Operating system as an example, installation steps for other operating systems are similar.

1. Please plug the wireless card into the computer's PCI-E Interface.
2. The “**Found New hardware Wizard**” dialog is coming here, we recommend you to select “**Cancel**” button, you can also click “**Next**”, Manual installation. (Figure 1)



Figure 1

3. Before device installation, please install the software from the CD, Click on the “**Setup**” link to begin the installation. (Figure 2)

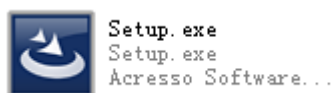


Figure 2

4. The Setup Program will detect automatically the install drivers and correct software by itself. The customer is according to "drive to install a guide to carry on to gradually install". (Figure 3, 4, 5 and 6)

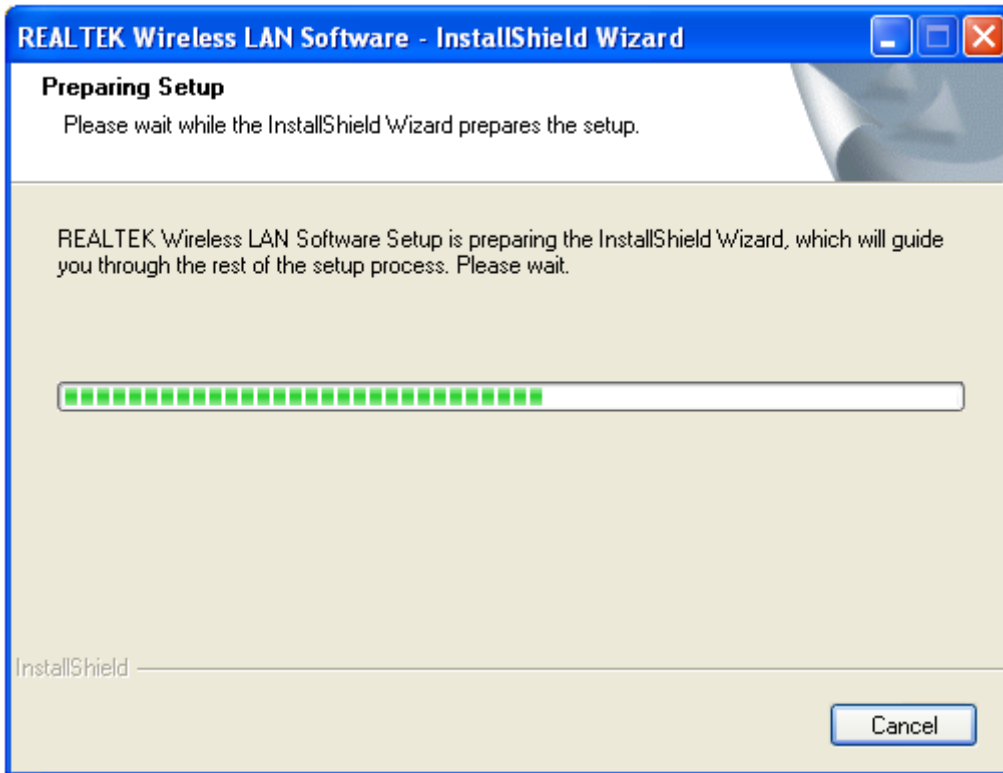


Figure 3

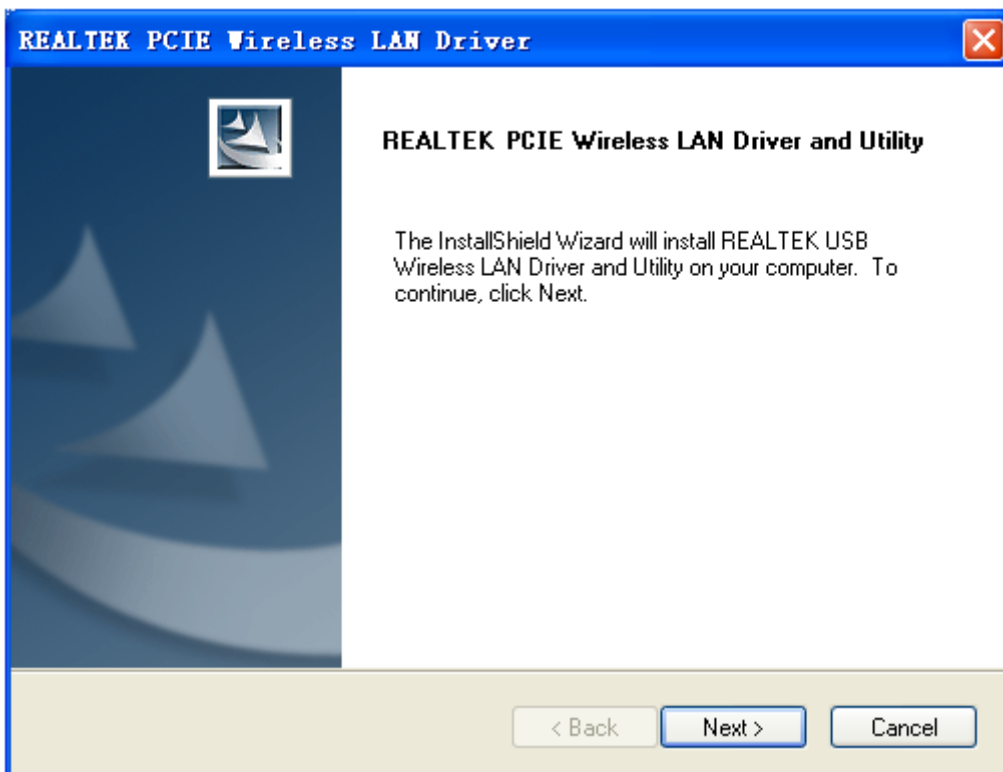


Figure 4

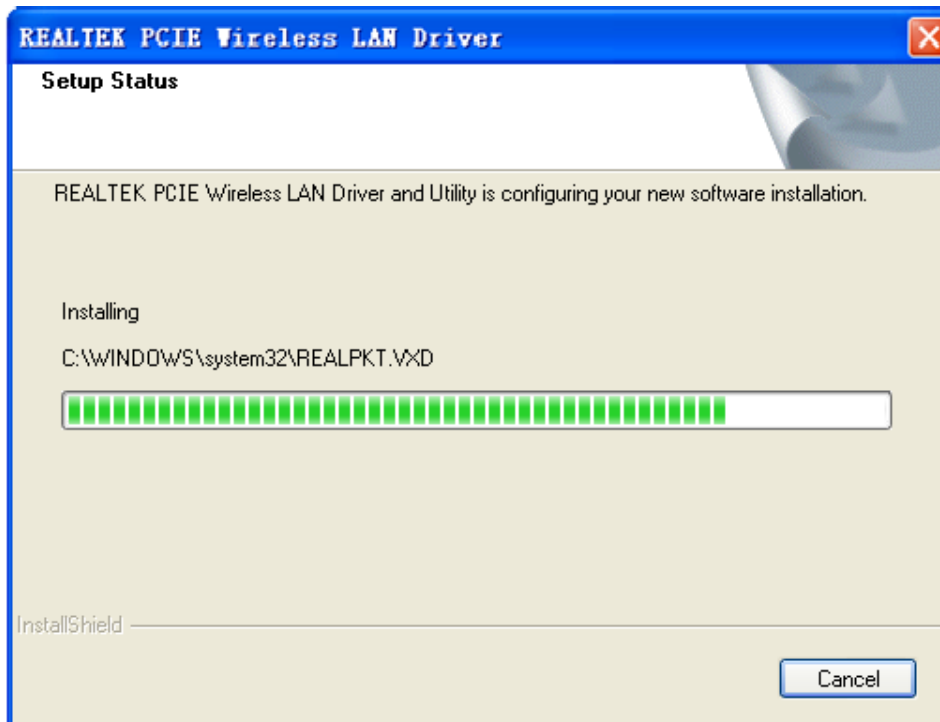


Figure 5

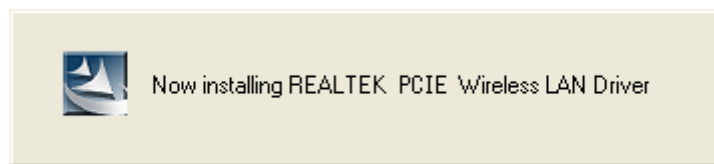


Figure 6

5. Click on **“Finish”**. The setup is already done. (Figure 7)

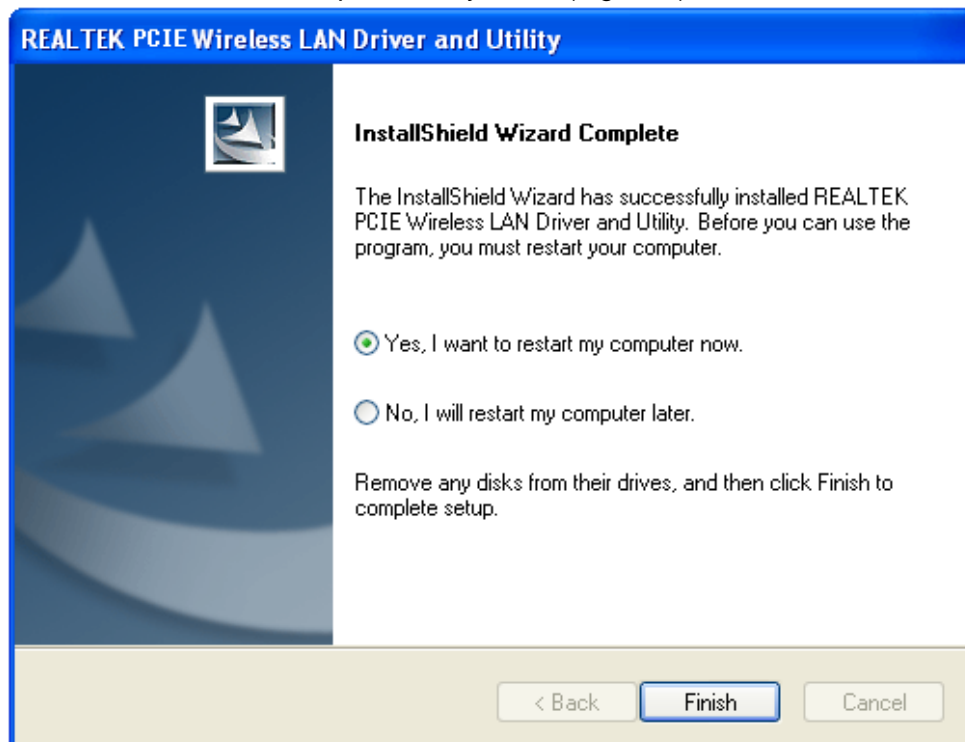


Figure 7

Chapter 3 Connect Wireless Network

This section will teach you how to use Windows Built-in Wireless Configuration to connect to the wireless network.

Please refer to the following steps:

1. Right click “Local Area Connect” icon in the Task bar, and select “View Available Wireless Networks”.(Figure 8)



Figure 8

2. The screen displayed, the currently scanned wireless networks. If the one you want to connect has not been scanned, click “Refresh Network List” to update the network list. Select the wireless network you want to connect, and click “Connect” or double click this wireless network then click “Connect”.(Figure 9)

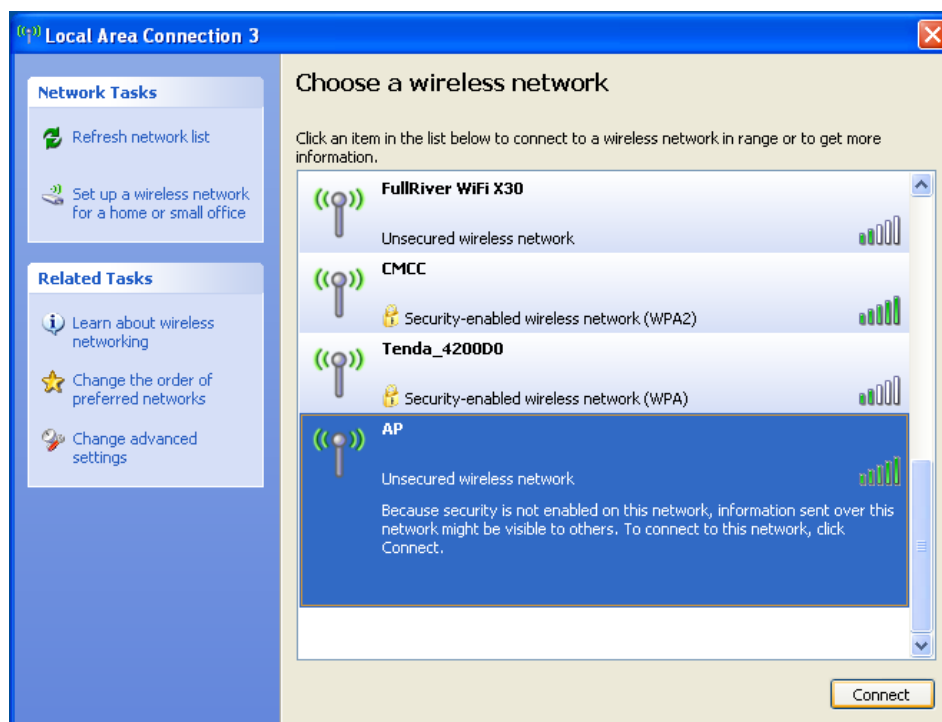


Figure 9

3. The Wireless Network Connection box will appear. Enter the Network Key and click Connect.(Figure 10)

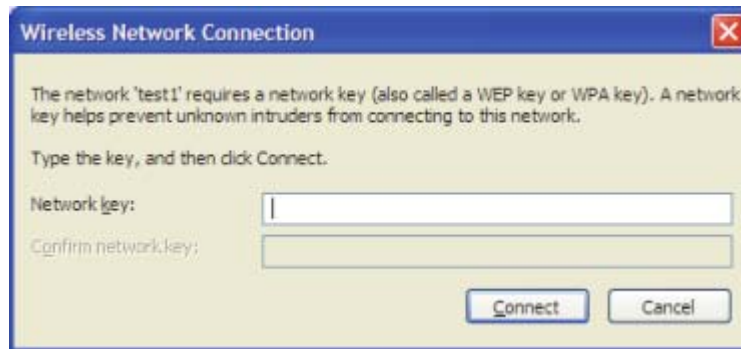


Figure 10

4. When it shows "Connected" as the picture below, then you can enjoy wireless access to Internet now.(Figure 11)

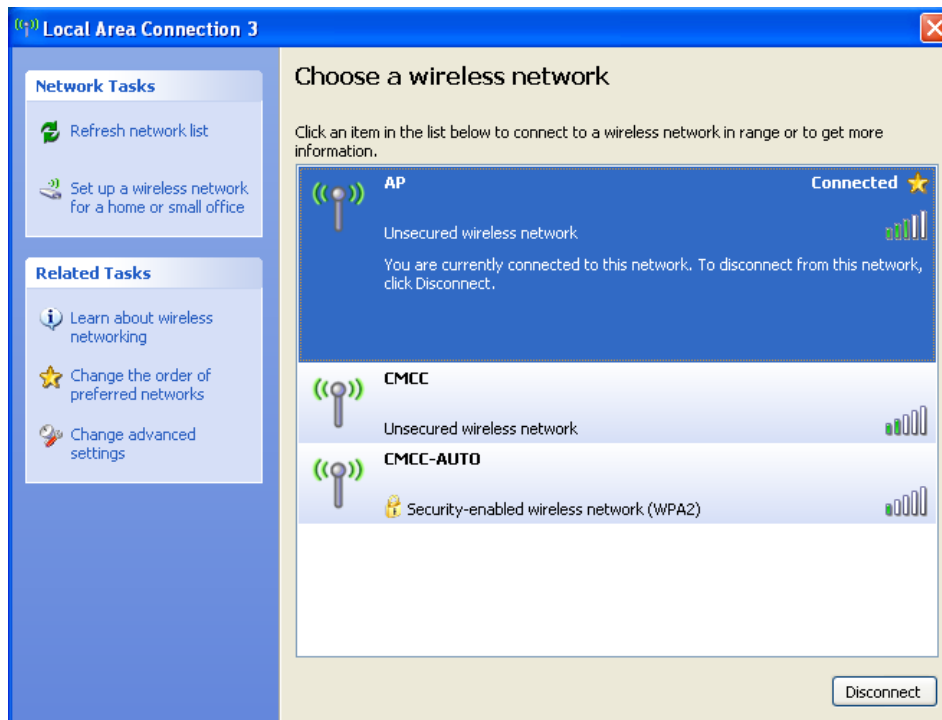


Figure 11

Appendix: Technical Specifications

Standards and Protocols	IEEE 802.11AC, IEEE 802.11n, IEEE 802.11b, IEEE 802.11g, IEEE 802.11a
PCI Bus	PCI EXPRESS X1
Sensitivity @PER	5G_11ac VHT80M_MCS8:-55dBm @10% PER HT40M_MCS7: -63dBm @10% PER HT20M_MCS7: -66dBm @10% PER 11N_2.4G HT40M_MCS7: -67dBm @10% PER HT20M_MCS7: -69dBm @10% PER OFDM_54M:-72dBm@10% PER 11b_11M:-85dBm@10% PER
Transmit Power	20dBm (max)
Antenna	2*3.5dBi removable omnidirectional antennas
Transmission Rate	802.11n: 2.4G 300Mbps Max 802.11ac: 5G 867Mbps Max
Operating System	Microsoft Windows XP 32/64, Vista 32/64, Windows 7 32/64, Windows 8 32/64, Window 8.1 32/64
Environment	Operating Temperature: 0°C~40°C Storage Temperature: -20°C~70°C Operating Humidity: 10%~90% non-condensing Storage Humidity: 5%~95% non-condensing

FCC RF Exposure Information and Statement

This equipment complies with FCC radiation exposure limits set forth for an uncontrolled environment. This equipment should be installed and operated with minimum distance 20cm between the radiator & your body.

FCC Warning

This device complies with Part 15 of the FCC Rules. Operation is subject to the following two conditions:

(1) This device may not cause harmful interference, and (2) this device must accept any interference received, including interference that may cause undesired operation.

NOTE 2: Any changes or modifications to this unit not expressly approved by the party responsible for compliance could void the user's authority to operate the equipment.