

**1 Connect Power:**  
To setup the CTR500, unbox the packaging. Next, plug the power adapter into the CTR500 first, then plug the adapter into the wall socket.

**cradlepoint**  
TECHNOLOGY

**CTR500**  
Wi-Fi 802.11 b/g  
Cellular Travel Router

**wipe**  
TOOLS

**Quick Start Guide**

**2 Connect Device:**  
Plug in an activated USB or ExpressCard device into the appropriate slot. Note that your device must be on the supported list. <http://www.cradlepoint.com/support>

**3 Connect LAN:**  
Connect to the CTR500 with an Ethernet cable or with a Wi-Fi network card. Instructions on how to connect using Wi-Fi can be found on the back of this document.

**LED Status:**

1. Power  
On - Solid Green
2. Ethernet  
Connected - Solid Green  
Activity - Blinking Green
3. Wi-Fi LAN  
On - Solid Green  
Activity - Blinking Green  
Red - Radio Hardware Error
4. USB Status  
Standby/Connecting - Orange  
Connected - Solid Green  
Activity - Blinking Green  
Red - Unsupported Device Error

5. ExpressCard  
Standby/Connecting - Orange  
Connected - Solid Green  
Activity - Blinking Green  
Red - Unsupported Device Error
6. Signal Strength  
Signal strength is displayed in 4 bars but is measured in half bars. A full bar will be solid, and a half bar will blink.

- Parts List:**  
Cellular Travel Router  
Power Adapter  
Ethernet Cable

**Notice:** Taking these actions will erase all settings and changes you have made to the router and set all passwords and settings to the factory defaults.

**Manually Updating Firmware**

1. Download the appropriate file from [www.cradlepoint.com/support](http://www.cradlepoint.com/support)
2. Connect to the router with Wi-Fi or Ethernet
3. Go to your device's login page (<http://192.168.0.1>).
4. Select the 'Tools' tab on the top, then the 'Firmware' menu on the left.
5. In the 'Firmware Upgrade' section, click 'Browse'
6. Browse for the downloaded file then click 'Open'
7. Click the upload button
8. Do not turn off or unplug the device while it is upgrading
9. The upgrading process should take a few minutes

**Factory Reset**

1. Ensure the router is powered off.
2. Press and hold the reset button.
3. Continuing to hold the reset button, plug the device into a power source.
4. Release the reset button when the lights flash (10 seconds).
5. The router will restart and be available on the default settings.

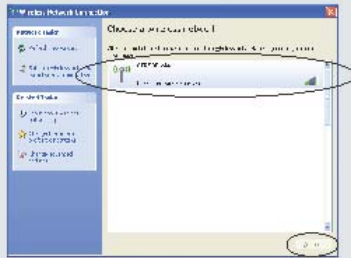


#### 4 For Wireless Internet Access:

Open the Windows wireless network connection manager by clicking on Start, Settings, Control Panel and then going to Network Connections. In Network Connections, right click on the wireless network connection and select "View Available Wireless Networks".

The Connection Manager will appear and allow you to browse the available wireless network connections. Select your CradlePoint Router and click connect.

Note: The Network Name or SSID is on the router's label.



Once you have established a wireless connection to the router you can access the setup pages by pointing your browser to 192.168.0.1.

The setup pages are used to setup user access permissions, wireless security and other advanced features of the router.

To bypass wireless security setup and connect to the internet, go directly to Step 6.

#### 6 Accessing The Internet:

Open a web browser and surf to any web site such as <http://www.cradlepoint.com>. You will be prompted for the Internet Access Password. By default, this is the last 6 characters of the MAC address. You can find the MAC address on the bottom of the router, or in the battery case of the router.

Enter the password and click the "Login" button.

On the next screen, click on the "Remember Me" button and it will remember this login for you until the next time your router firmware is updated or your perform a factory reset.



#### 5 Setup Wi-Fi Security:

After connecting to the router, Wi-Fi Security can be enabled. To accomplish this, simply open a browser and enter the router's IP (192.168.0.1) into the address bar.

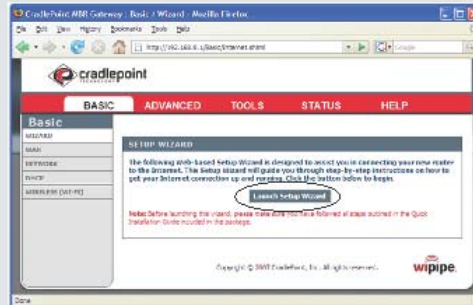
This will open the setup pages. Login using the Administration Password, by default this password is the last 6 characters of the MAC address.



After logging into the router, click on the "Basic" menu tab at the top of the setup window. Next, click on the "Launch Setup Wizard" button in the middle of the screen.

Follow the instructions in the Wizard to complete the setup.

After security setup has been completed, continue to Step 6 to use the Security-Enabled Internet Connection.



Note : This device have antenna port that could be connected external antenna.

Specific details of the reference antenna used for testing is detailed in the table below.

Antenna Model	Antenna gain	Antenna type
IBF-617XMMXX-500	2dBi	Dipole
ICF-6350RSXX	5dBi	Dipole

### **Federal Communication Commission Interference Statement**

This equipment has been tested and found to comply with the limits for a Class B digital device, pursuant to Part 15 of the FCC Rules. These limits are designed to provide reasonable protection against harmful interference in a residential installation. This equipment generates, uses and can radiate radio frequency energy and, if not installed and used in accordance with the instructions, may cause harmful interference to radio communications. However, there is no guarantee that interference will not occur in a particular installation. If this equipment does cause harmful interference to radio or television reception, which can be determined by turning the equipment off and on, the user is encouraged to try to correct the interference by one of the following measures:

- Reorient or relocate the receiving antenna.
- Increase the separation between the equipment and receiver.
- Connect the equipment into an outlet on a circuit different from that to which the receiver is connected.
- Consult the dealer or an experienced radio/TV technician for help.

This device complies with Part 15 of the FCC Rules. Operation is subject to the following two conditions: (1) This device may not cause harmful interference, and (2) this device must accept any interference received, including interference that may cause undesired operation.

FCC Caution: Any changes or modifications not expressly approved by the

party responsible for compliance could void the user's authority to operate this equipment.

IEEE 802.11b or 802.11g operation of this product in the U.S.A. is firmware-limited to channels 1 through 11.

**IMPORTANT NOTE:**

**FCC Radiation Exposure Statement:**

This equipment complies with FCC radiation exposure limits set forth for an uncontrolled environment. This equipment should be installed and operated with minimum distance 20cm between the radiator & your body.

This transmitter must not be co-located or operating in conjunction with any other antenna or transmitter, except tested co-located configuration

Following 3.5G card have passed co-located EMC/RF exposure test with this device and could be used with this device. Other 3.5G card may or may not comply with the FCC rule, please consult manufacture before purchase.

The EUT could be applied with one 3.5G 1XEV-DO Card and following two different models could be chosen; therefore emission tests are added for simultaneously transmit between wireless LAN and 3.5G 1XEV-DO function. The emission tests have been performed at the worst channel of both WLAN and 3.5G 1XEV-DO, and recorded in the report.

Interface	Brand name	Model name	FCC ID
Express card	SIERRA WIRELESS	AirCard 880E	N7NAC880E
USB port	SIERRA WIRELESS	COMPASS 597	N7NC597

That only tested 3G cards and antennas can be used with this device