

# QUICK START GUIDE

HITRON  
CGNV2

Read me  
first!

- Connect to the network
- Connect your phones (Optional)
- Set up your wireless network (Optional)



## Check the box contents

STEP  
1

Look in the box and make sure you have the following:



HITRON CGNV2



POWER ADAPTOR



ETHERNET CABLE

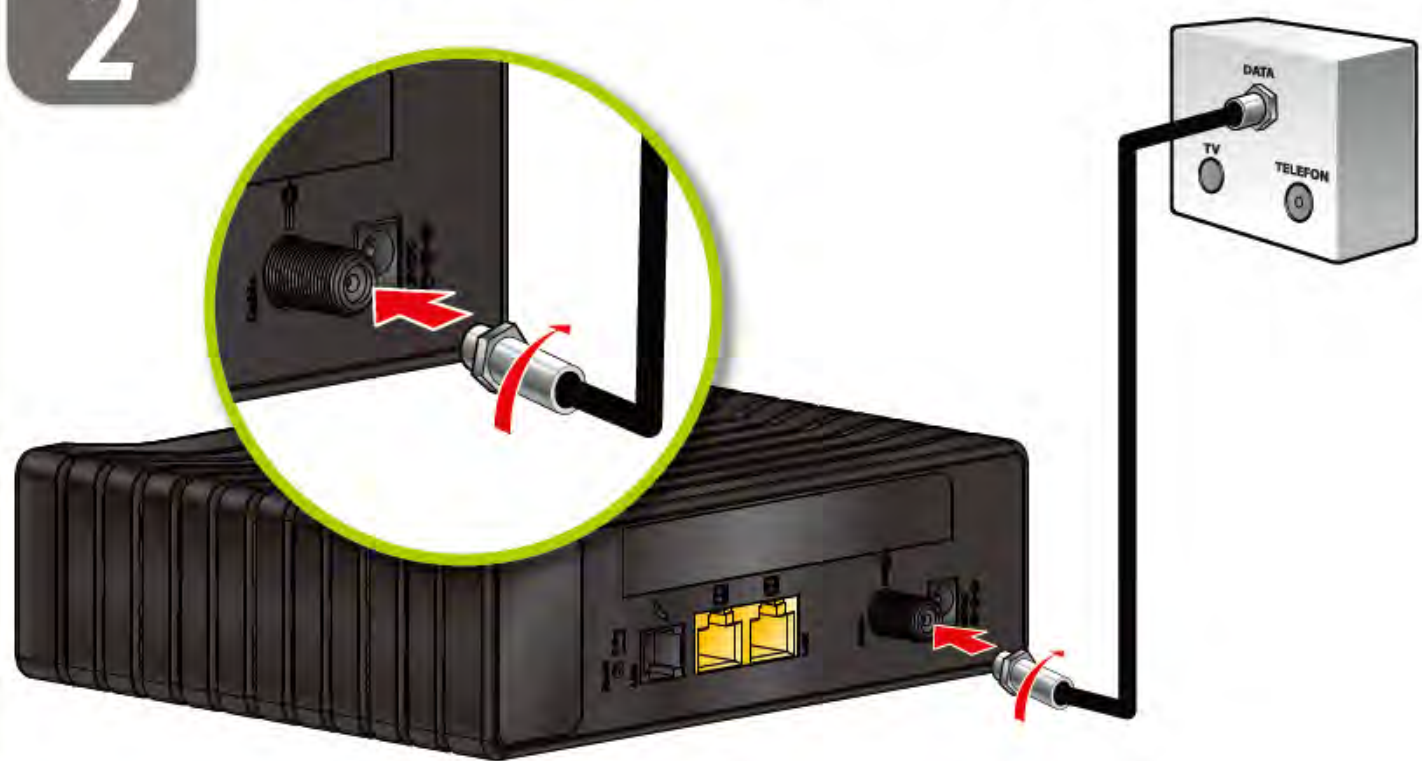


QUICK START GUIDE

## Connect the cable port

STEP  
2

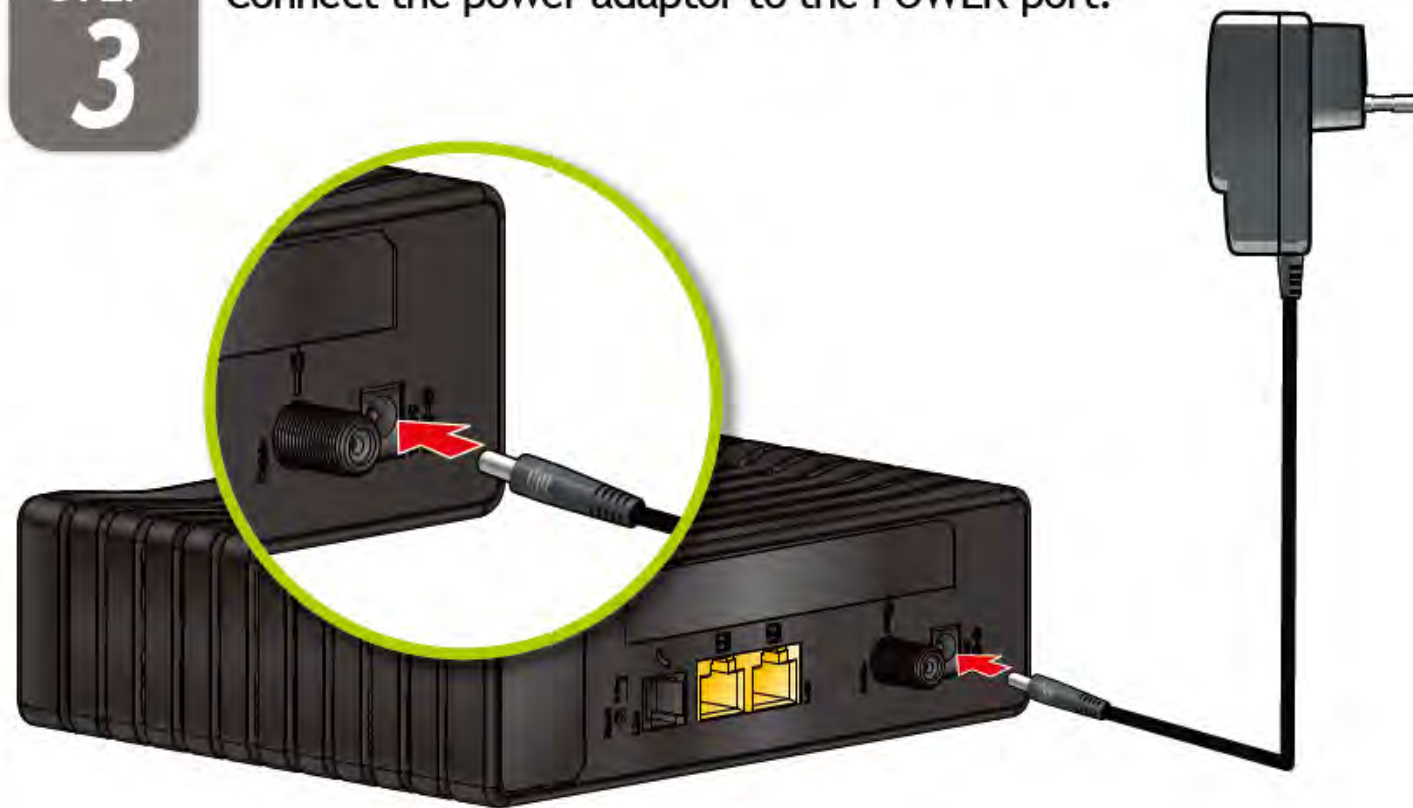
Connect your cable outlet to the device's CABLE connector.



## Connect the power

STEP  
3

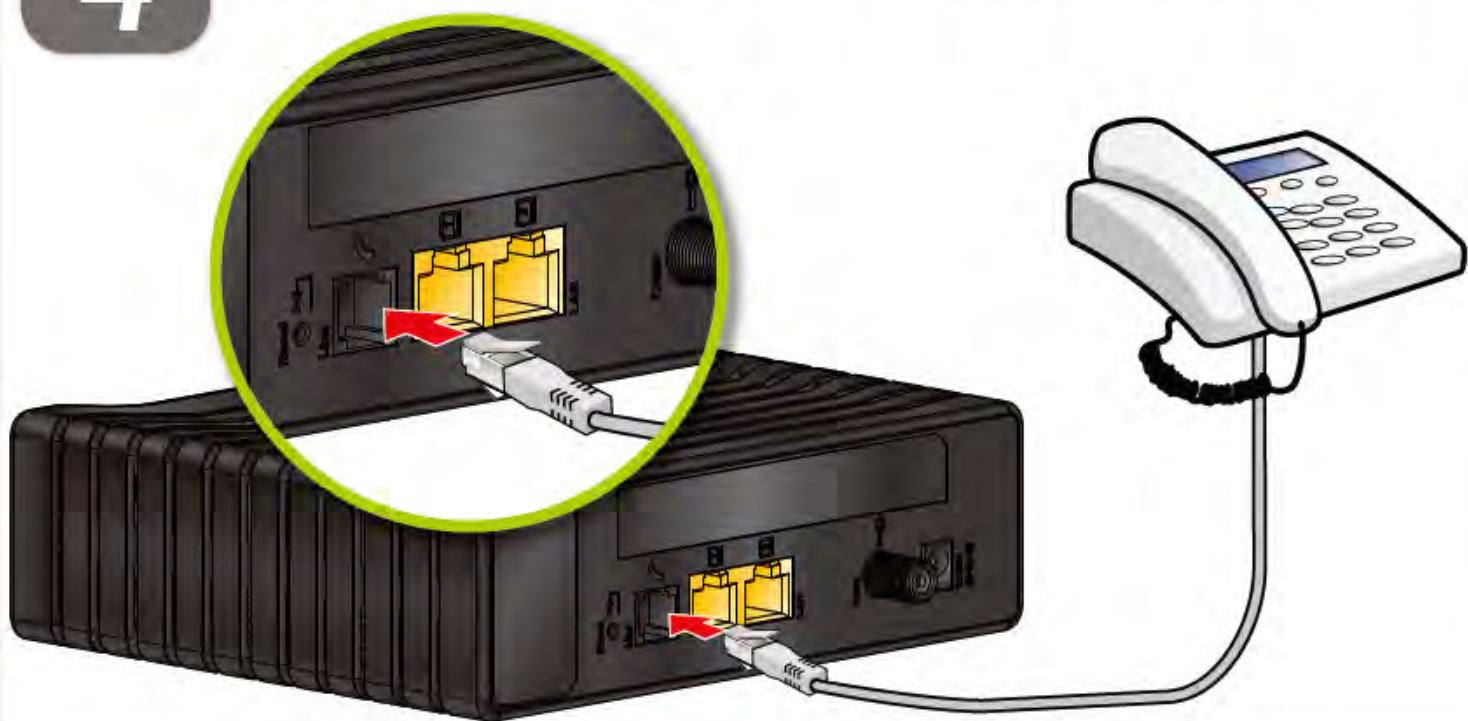
Connect the power adaptor to the POWER port.



## Connect your phones / fax machines (Model w / VoIP only)

STEP  
4

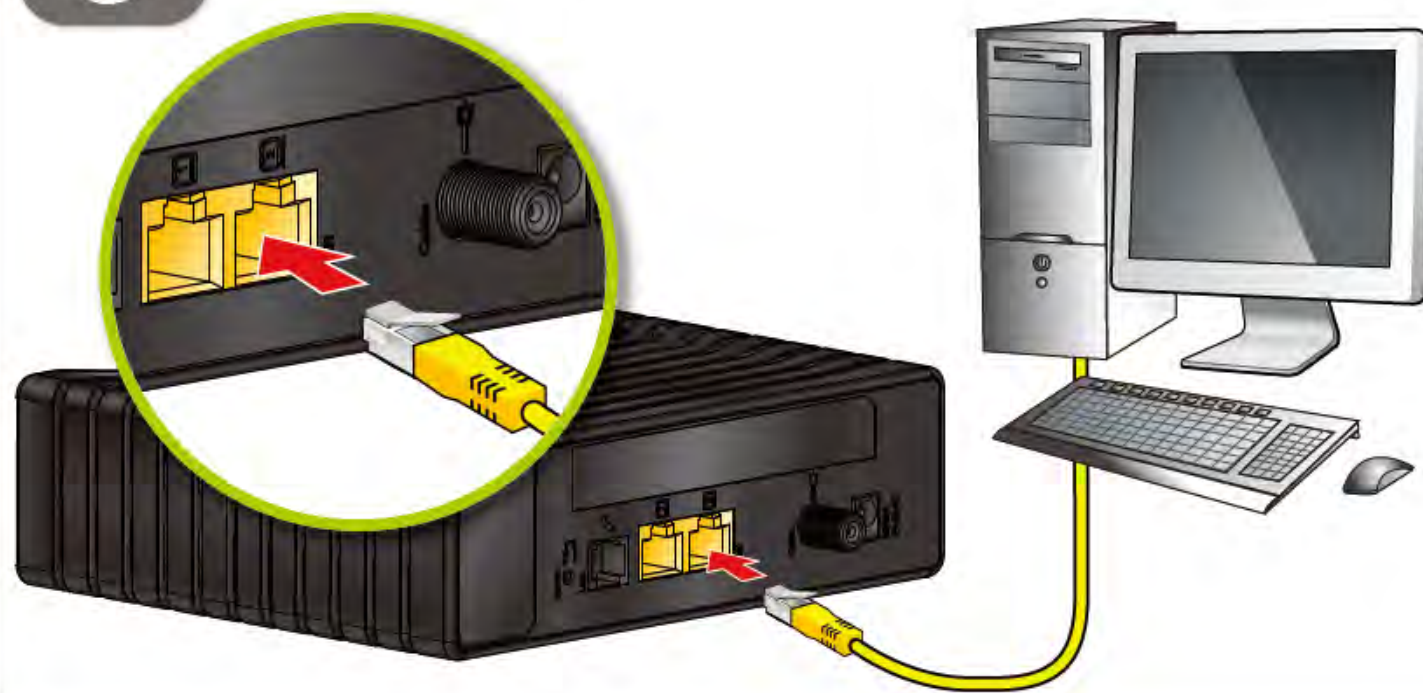
Use the cables to connect your phones and fax machines to the LINE ports. Do this only if you ordered phone/fax service.



## Connect wired computers (optional)

STEP  
5

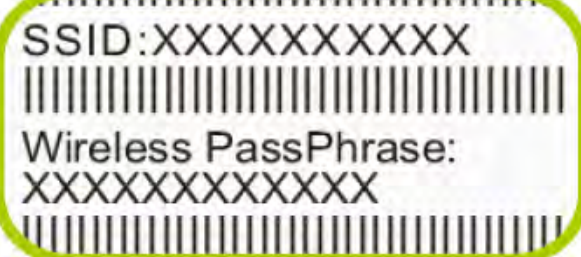
You can use the included Ethernet cable to connect a computer to one of the LAN ports.



## Connect wireless computers (optional / Model w / WiFi only)

STEP  
6

You can connect computers to the wireless network. Look at the sticker on the bottom of the device, and make a note of the SSID and Wireless PassPhrase.



Next, look at the LEDs (lights) on the front of the device. Wireless LED on, or blinking? If so, the wireless network is on. If not, turn the wireless network on by pressing the WiFi button on the side of the device for at least 1 second. Press this button more than 5 seconds for WPS function.

On your computer, open your wireless network utility (this example uses Windows XP). Refresh the network list and locate your device's SSID.



Select the network. In the next screen, enter the Wireless PassPhrase.



Click Connect. The next screen shows that you are securely connected.

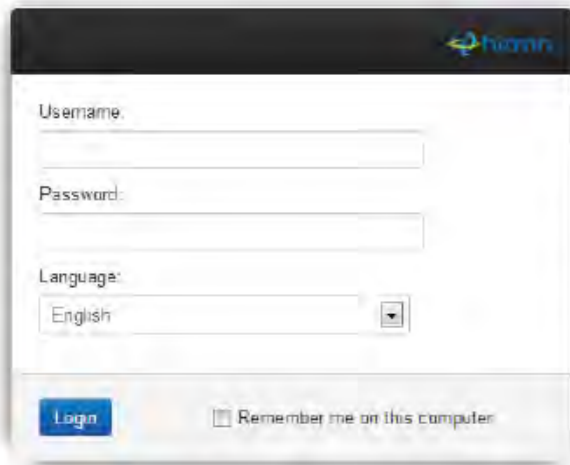
## Setup Complete

**STEP 7**

Use the configuration interface to complete control over the device's behavior. In a Web browser, enter 192.168.0.1 in the address bar. Enter admin as the username and password as the password in the screen displays .

### IP addresses

If your gateway is successfully connected to the network but you cannot access the Internet from a connected computer, your computer's IP Address may be set up wrongly. In your computer's control panel either ensure that the computer is configured to receive an IP address automatically (recommended) or it has a static IP address in the range 192.168.0.10~192.168.0.254.



STATUS

**Blinking:** Registration in progress (cable interface acquiring IP, Time of Day, Cable Modem configuration)

**On:** Gateway is operational.

**Off:** Gateway is offline.



LAN1

**Green-Blinking:** Data transmitting

**Green-Steady:** 10/100Mbps Link up



LAN2

**Green-Blinking:** Data transmitting

**Green-Steady:** 10/100Mbps Link up

## LED Display



POWER

**Blinking:** No AC power, device is running on battery.

**On:** Device is running with AC power.

**Off:** Not powered.



DOWNSTREAM

**Green-Blinking:** The modem is searching for the DOWNSTREAM Frequency.

**Green-Steady:** Downstream frequency is locked. (1 channel only)

**Blue-Steady:** Downstream frequency is locked. (channel bonding)

**Dark:** Not scanning



UPSTREAM

**Green-Blinking:** The modem is searching for the UPSTREAM Frequency.

**Green-Steady:** Upstream frequency is locked. (1 channel only)

**Blue-Steady:** Downstream frequency is locked. (channel bonding)

**Dark:** Not scanning



LINE

**Green-Blinking:** Tel line is in use.

**Green:** Gateway's Tel port is online.

**Dark:** Gateway's Tel port is not online.



Wireless

**Blinking:** Data traffic on WiFi interface.

**On:** WiFi is enabled.

**Off:** WiFi is disabled.

## Connect options



## Safety Warnings



### WARNING

Risk of electrical shock. Do not expose the device to water or moisture. The device is a high-performance communications device designed for home and office environments. Do not use the device outdoors. Keep the device in an environment between 0°C ~ 40°C (32°F ~ 104°F). To avoid overheating, do NOT place any object on top of the device. Do not restrict the flow of air around the cable modem. The manufacturer assumes no liabilities for damage caused by any improper use of the device.

### DISCLAIMER

The manufacturer assumes no liabilities with respect to the contents of this document. The manufacturer also reserves the right to revise this document or update the content thereof without any obligation to notify any person of such revisions or amendments. Specifications subject to change without notice.

### CAUTION

The cable distribution system should be grounded (earthed) in accordance with ANS/NFPA 70, the National Electrical Code (NEC), in particular Section 820.93, Grounding of Outer Conductive Shield of a Coaxial Cable.

COPYRIGHT © 2014 HITRON TECHNOLOGIES, INC.

### FCC Statement:

#### Federal Communication Commission Interference Statement

This equipment has been tested and found to comply with the limits for a Class B digital device, pursuant to Part 15 of the FCC Rules. These limits are designed to provide reasonable protection against harmful interference in a residential installation. This equipment generates, uses and can radiate radio frequency energy and, if not installed and used in accordance with the instructions, may cause harmful interference to radio communications. However, there is no guarantee that interference will not occur in a particular installation. If this equipment does cause harmful interference to radio or television reception, which can be determined by turning the equipment off and on, the user is encouraged to try to correct the interference by one of the following measures:

- Reorient or relocate the receiving antenna.
- Increase the separation between the equipment and receiver.
- Connect the equipment into an outlet on a circuit different from that to which the receiver is connected.
- Consult the dealer or an experienced radio/TV technician for help.

FCC Caution: Any changes or modifications not expressly approved by the party responsible for compliance could void the user's authority to operate this equipment.

This device complies with Part 15 of the FCC Rules. Operation is subject to the following two conditions: (1) This device may not cause harmful interference, and (2) this device must accept

any interference received, including interference that may cause undesired operation. For product available in the USA/Canada market, only channel 1-11 can be operated. Selection of other channels is not possible.

This device and its antennas(s) must not be co-located or operating in conjunction with any other antenna or transmitter except in accordance with FCC multi-transmitter product procedures.

### IMPORTANT NOTE:

#### FCC Radiation Exposure Statement:

This equipment complies with FCC radiation exposure limits set forth for an uncontrolled environment. This equipment should be installed and operated with minimum distance 20cm between the radiator & your body.