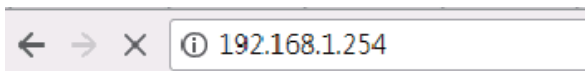


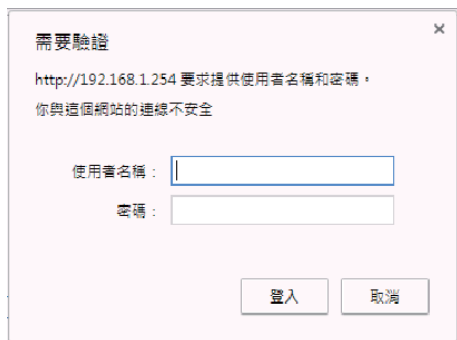
# Step 5

## Access Point Setup

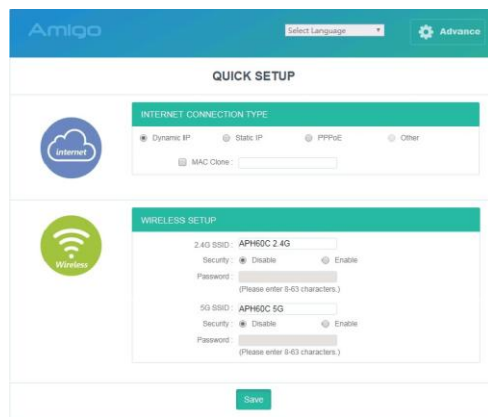
(1) Open a web browser on your computer. In the address bar of the web browser, enter 192.168.1.254 and enter.



(2) A login screen will appear. By default, the username of the Access Point is admin and the password is admin. Enter the current username and password of the Access Point and then click Login. (Username: admin, Password: admin)



(3) The Access Point User Interface will appear. This device can operate in Access Point operating mode.



### Federal Communication Commission Interference Statement

This device complies with Part 15 of the FCC Rules. Operation is subject to the following two conditions: (1) This device may not cause harmful interference, and (2) this device must accept any interference received, including interference that may cause undesired operation.

This equipment has been tested and found to comply with the limits for a Class B digital device, pursuant to Part 15 of the FCC Rules. These limits are designed to provide reasonable protection against harmful interference in a residential installation. This equipment generates, uses and can radiate radio frequency energy and, if not installed and used in accordance with the instructions, may cause harmful interference to radio communications. However, there is no guarantee that interference will not occur in a particular installation. If this equipment does cause harmful interference to radio or television reception, which can be determined by turning the equipment off and on, the user is encouraged to try to correct the interference by one of the following measures:

- Reorient or relocate the receiving antenna.
- Increase the separation between the equipment and receiver.
- Connect the equipment into an outlet on a circuit different from that to which the receiver is connected.
- Consult the dealer or an experienced radio/TV technician for help.

FCC Caution: Any changes or modifications not expressly approved by the party responsible for compliance could void the user's authority to operate this equipment.

This transmitter must not be co-located or operating in conjunction with any other antenna or transmitter.

### Radiation Exposure Statement:

This equipment complies with FCC radiation exposure limits set forth for an uncontrolled environment. This equipment should be installed and operated with minimum distance 35cm between the radiator & your body.

### Professional installation instruction

#### 1. Installation personal

This product is designed for specific application and needs to be installed by a qualified personal who has RF and related rule knowledge. The general user shall not attempt to install or change the setting.

#### 2. Installation location

The product shall be installed at a location where the radiating antenna can be kept 35cm from nearby person in normal operation condition to meet regulatory RF exposure requirement.

#### 3. External antenna

Use only the antennas which have been approved by the applicant. The non-approved antenna(s) may produce unwanted spurious or excessive RF transmitting power which may lead to the violation of FCC limit and is prohibited. The antenna must be installed completely perpendicular to the horizon for compliance with FCC Rule Part 15.407(a)(1)(i).

#### 4. Installation procedure

Please refer to user's manual for the detail.

#### 5. Warning

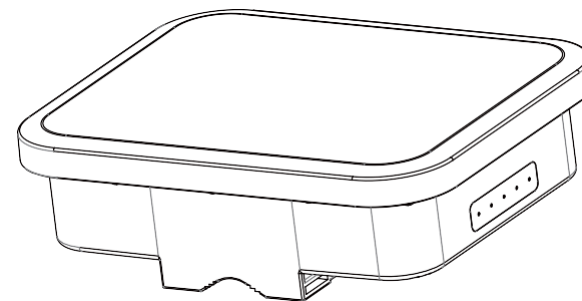
Please carefully select the installation position and make sure that the final output power does not exceed the limit set force in relevant rules. The violation of the rule could lead to serious federal penalty.

The antenna gain, antenna type and output power that can be used for the device and the info listed below are correct and represent the product.

| Antenna type    | 2.4GHz (~2462MHz) |           | 5GHzband 1(f5 180~5240MHz) |           | 5GHzband 4(5745~5825MHz) |           |
|-----------------|-------------------|-----------|----------------------------|-----------|--------------------------|-----------|
|                 | Antenna Gain      | Max power | Antenna Gain               | Max power | Antenna Gain             | Max power |
| Internal Patch  | 8.4dBi            | 497.225mW | 7.0dBi                     | 173.482mW | 7.3dBi                   | 710.614mW |
| External Dipole | 4.92dBi           | 645.727mW | 6.87dBi                    | 201.971mW | 6.92dBi                  | 782.596mW |

## Quick Installation Guide

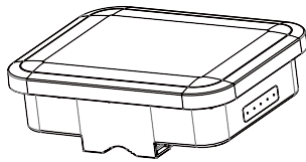
### Ruggedized Access Point



# Step 1

## Package Content

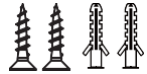
(1) Access Point



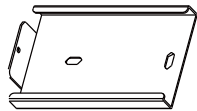
(2) Power Adapter



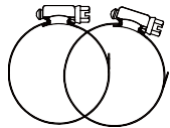
(3) Wall Mounting screw set



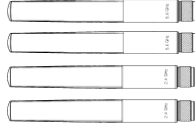
(4) Wall Mounting kit



(5) Hose Clamp



(6) Antenna (for API51c)

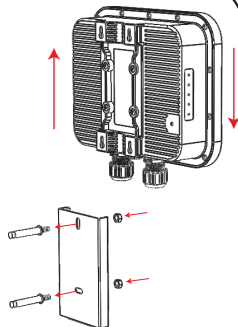


# Step 2

## Mounting Kits Installation

■ For Wall Mount Installation:

(1) Determine where the mounting plate of Access Point to be placed and mark location on the surface for the two mounting holes. Use the appropriate drill bit to drill two 26mm depth holes in the markings and hammer the bolts into the openings.



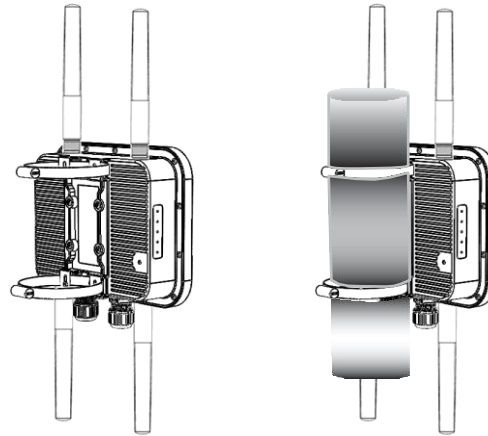
(2) Screw the anchors into the holes until they are flush with the wall.

(3) Put mounting plate on the wall to map with hole of anchor then screw the included screws into the anchors.

(4) Place the Access Point against wall fitting throughout the slots of the Access Point.

■ For Pole mount Installation:

Thread the open end of the pole strap through the two tabs on the Access Point pole mount hole. Lock and tighten pole strap to secure the device to the pole. Make sure the antenna installed completely perpendicular to the horizon direction.



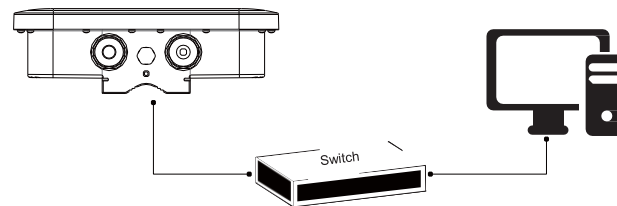
# Step 3

## Connecting the Device for Configuration

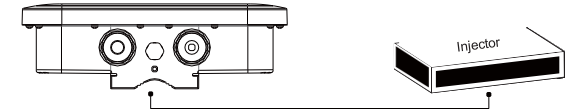
(1) Connect one end of the Ethernet cable into the LAN1 port of the Access Point and the other end into the Ethernet port on the computer.

(2) Plug in power source by different ways that depends on user setup environment

(A) PoE Switch (Plug in from LAN1 Port)



(B) PoE Injector (Plug in from LAN1 Port)



(C) DC Power Adapter (Plug in from DC Jack)

-Connect the Power Adapter to the DC-IN port of the Access Point and plug the other end into an electrical outlet.

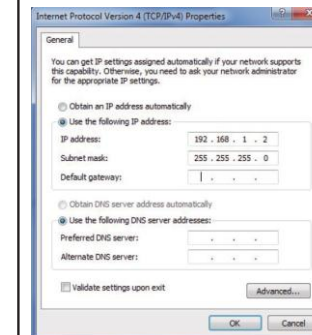
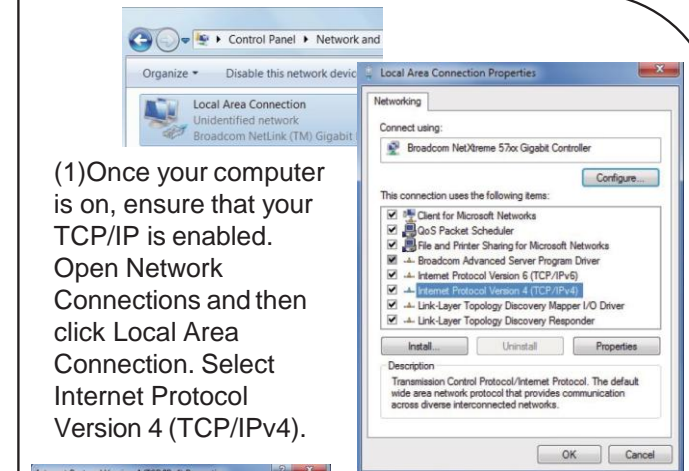


Note: The Access Point supports both IEEE 802.3at PoE (Power over Ethernet) or the included power adapter. You may use either one as the power source. DO NOT use both at the same time.

# Step 4

## IP Address Configuration

(1) Once your computer is on, ensure that your TCP/IP is enabled. Open Network Connections and then click Local Area Connection. Select Internet Protocol Version 4 (TCP/IPv4).



(2) If your computer is already on a network, ensure that you have set it to a Static IP Address on the interface. (Example: 192.168.1.2, the Subnet Mask address as 255.255.255.0. and Default Gateway is 192.168.1.254)