

54Mbps Wireless Network Access Point

USER'S MANUAL



Model Name:	GL2454AP-QA
Version:	1.1
Date:	11/11/03

Contents

1.	Overview	3
1.1	Product Feature	3
1.2	System Requirements.....	3
2.	Getting Start	3
2.1	Know the 54Mbps Wireless Network Access Point	3
2.2	Connect to the 54Mbps Wireless Network Access Point.....	4
2.3	Quick Setup with Wizard	4
2.3.1	Access the Setting Menu.....	4
2.3.2	Setup with Wizard.....	7
3.	Configuration	10
3.1	Status	10
3.2	Basic Setting	12
3.3	IP Setting.....	13
3.4	Advanced Setting	14
3.5	Security	16
3.6	802.1x.....	17
3.7	Tools.....	18
4.	Glossary	19

1. Overview

1.1 Product Feature

Compliance with IEEE 802.11g and 802.11b standards

Highly efficient design mechanism to provide unbeatable performance

Achieving data rate up to 54Mbps for 802.11g and 11Mps for 802.11b with wide range coverage

Strong network security with WEP and 802.1X encryption

Quick and easy setup with Web-based management utility.

1.2 System Requirements

Windows 98, 98SE, Millennium Edition (ME), 2000 and XP operating systems

Microsoft Internet Explorer 5.5 or higher

One CD-ROM drive

At least one RJ-45 Ethernet network adapter installed.

2. Getting Start

2.1 Know the 54Mbps Wireless Network Access Point

Ports:

- Power Receptor
- Reset Button
- RJ-45 Ethernet Port

Straight through cable is required to connect with router or switch

Cross-over cable is required to connect to computer directly

LEDs:

- Power LED: ON when the unit is powered up
- LAN LED: ON indicates LAN connection; BLINK indicates LAN activity
- WLAN LED: ON indicates WLAN is working; BLINK indicates wireless

activity.

2.2 Connect to the 54Mbps Wireless Network Access Point

Build the Infrastructure Mode



In order to setup an Infrastructure of a wireless network such as the example shown above, you will need the following:

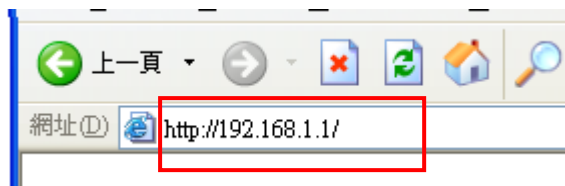
1. A broadband Internet connection.
2. ADSL or Cable modem provided by your ISP as part of the broadband connection installation.
3. A Router that connects to the ADSL/Cable modem for Internet connection sharing.
4. An Access Point to connect with the Router to form a wireless infrastructure network.
5. Wireless clients equipped with wireless networking devices such as wireless PC Card for wireless connection.

2.3 Quick Setup with Wizard

2.3.1 Access the Setting Menu

You could start to access the configuration menu anytime by opening a web browser

window by typing the IP address of this access point. The default IP is 192.168.1.1.



The below window will popup. Please enter the user name and password. Both of the default is “admin”.



Microsoft Internet Explorer 是由 陽摩電子股份有限公司 提供

檔案(E) 編輯(E) 檢視(V) 我的最愛(A) 工具(T) 說明(H)

上一頁 後進 刷新 搜索 我的最愛 媒體

網址(D) http://192.168.1.1/status.htm 移至 連結 >>

Access Point 54 Mbps

wizard **Status** Basic Setting | IP Setting | Advanced Setting | Security | 802.1x | Tools

Status

Firmware Version 1.1

LAN MAC:0E1234567812

IP Address: 192.168.1.1

Subnet Mask: 255.255.255.0

Gateway: 0.0.0.0

Send: 195

Receive: 176

Wireless MAC:00-03-7F-00-00-6B

SSID: default

Encryption Function : 64 bits

Channel: 6

Now, the main menu screen is popup.

2.3.2 Setup with Wizard

Setup wizard is provided as the part of the web configuration utility. You can simply follow the step-by-step process to get your Access Point configuration ready to run in 4 easy steps by clicking on the “**Wizard**” button on the function menu. The following screen will appear. Please click “**Next**” to continue.



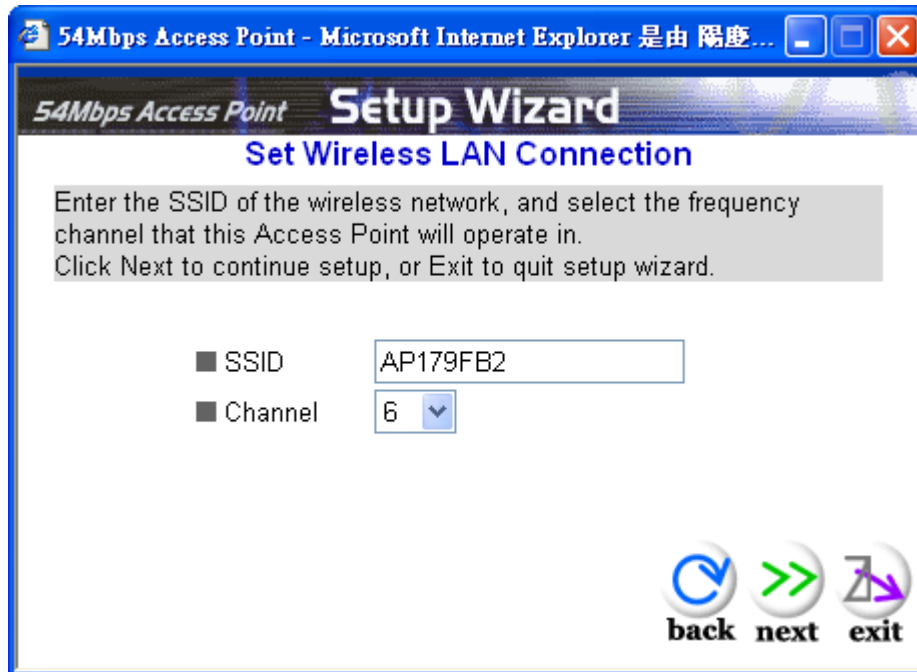
Step 1: Set Password

You can change the password as you like and then click “**Next**” to continue.



Step2: Set WLAN Connection

Please type the name of SSID you like and select the channel. Then, click “Next” to continue.



54Mbps Access Point - Microsoft Internet Explorer 是由 陽慶...

54Mbps Access Point Setup Wizard

Set Wireless LAN Connection

Enter the SSID of the wireless network, and select the frequency channel that this Access Point will operate in.
Click Next to continue setup, or Exit to quit setup wizard.

■ SSID

■ Channel

back next exit

Step 3: Set WEP Encryption

If you like to enable WEP, please click “Enabled”. Then, select the key size of WEP encryption and enter the key value in the key text box. Please click “Next” to continue.



54Mbps Access Point - Microsoft Internet Explorer 是由 陽慶...

54Mbps Access Point Setup Wizard

You may enable WEP security for data encryption by selecting Enabled. Select one of the WEP encryption key size and enter the value of the key in the text fields below.
Click Next to continue with setup, or Exit to quit setup wizard.

■ Wep Enabled Disabled

■ Wep encryption

■ Key

Input 10 HEX characters(HEX is 0~9, A~F or a~f)

back next exit

Step 4: Restart

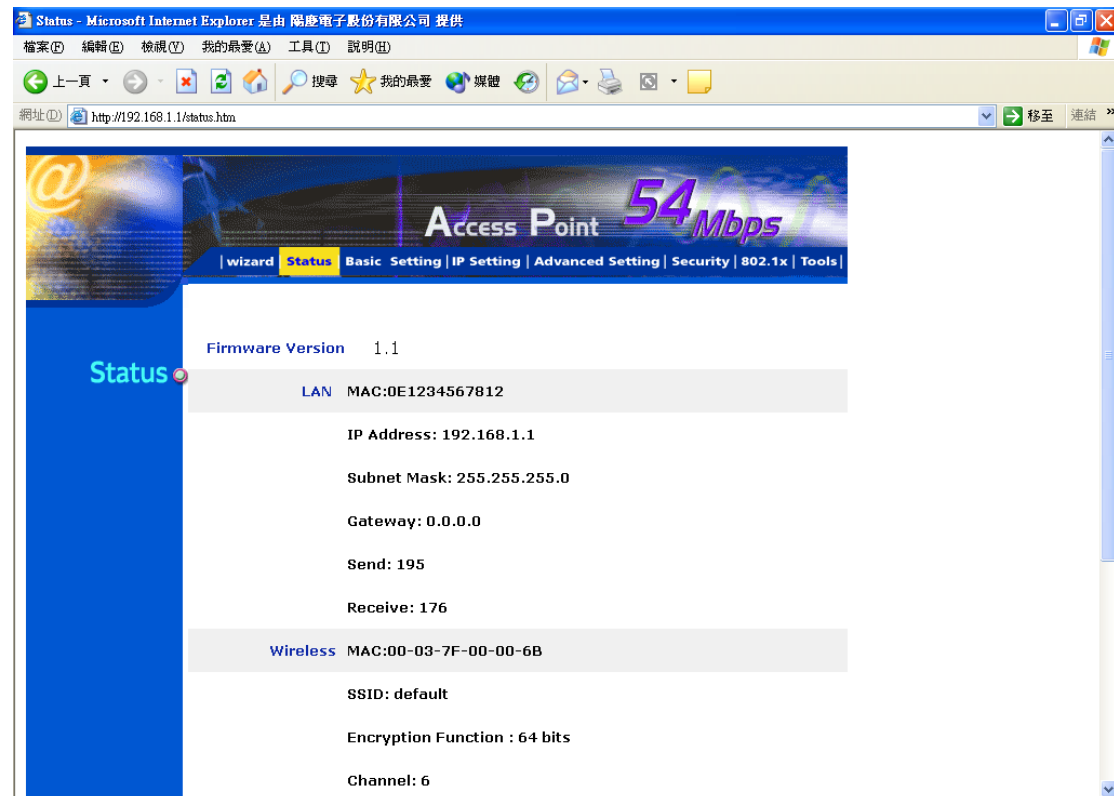
The Setup wizard is now completed. The new settings will be effective after the Access Point restarted. Please click “**Restart**” to reboot the Access Point. If you do not want to make any changes, please click “**exit**” to quit without any changes. You also can go back to modify the setting by clicking “**Back**”.



3. Configuration

3.1 Status

This page as below shows you the following information.

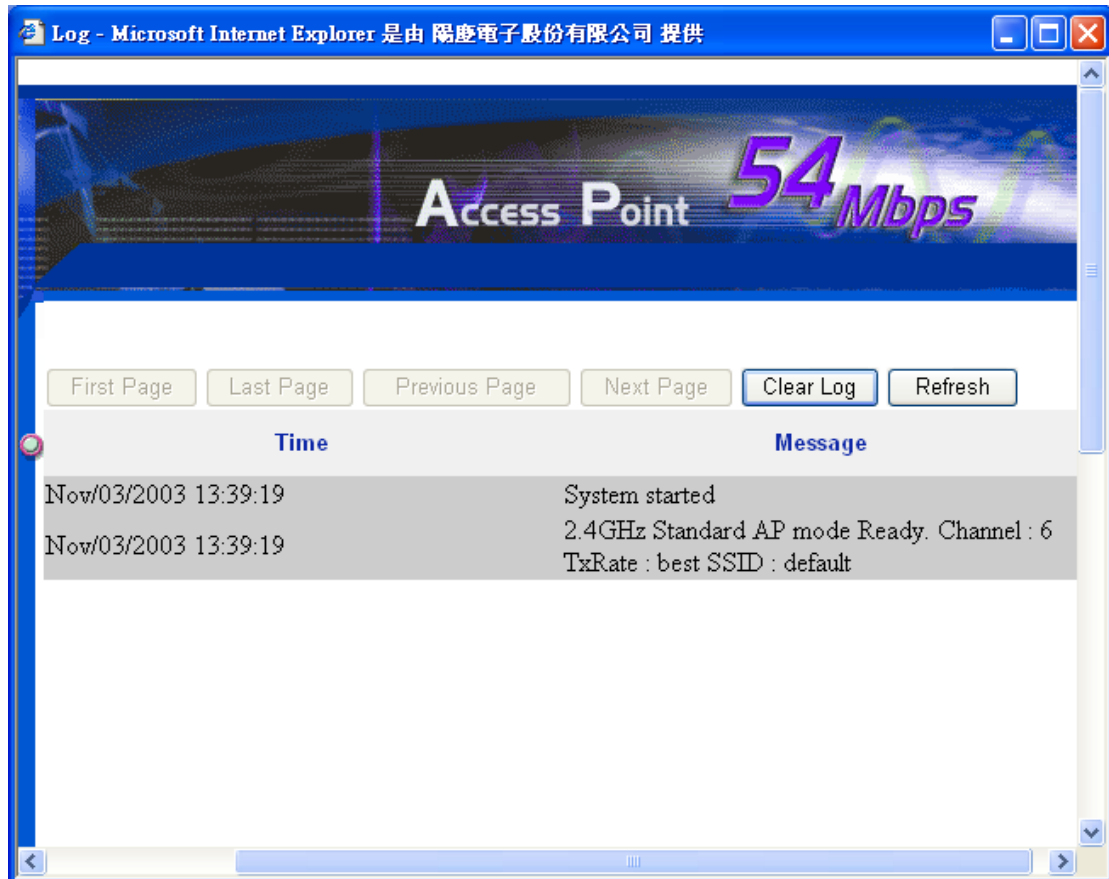


Firmware Version: Shows the current firmware version.

LAN: Shows the Mac address, IP address (default: 192.168.1.1), Subnet Mask, Gateway Address. The current LAN traffic calculated in terms of number of packets sent and received by AP through wired connection is also displayed.

Wireless: Shows the Mac address, current ESSID, the status of Encryption Function (Enable or Disable), the current using channel. The current wireless traffic calculated in terms of number of packets sent and received by AP through wireless communication is also displayed.

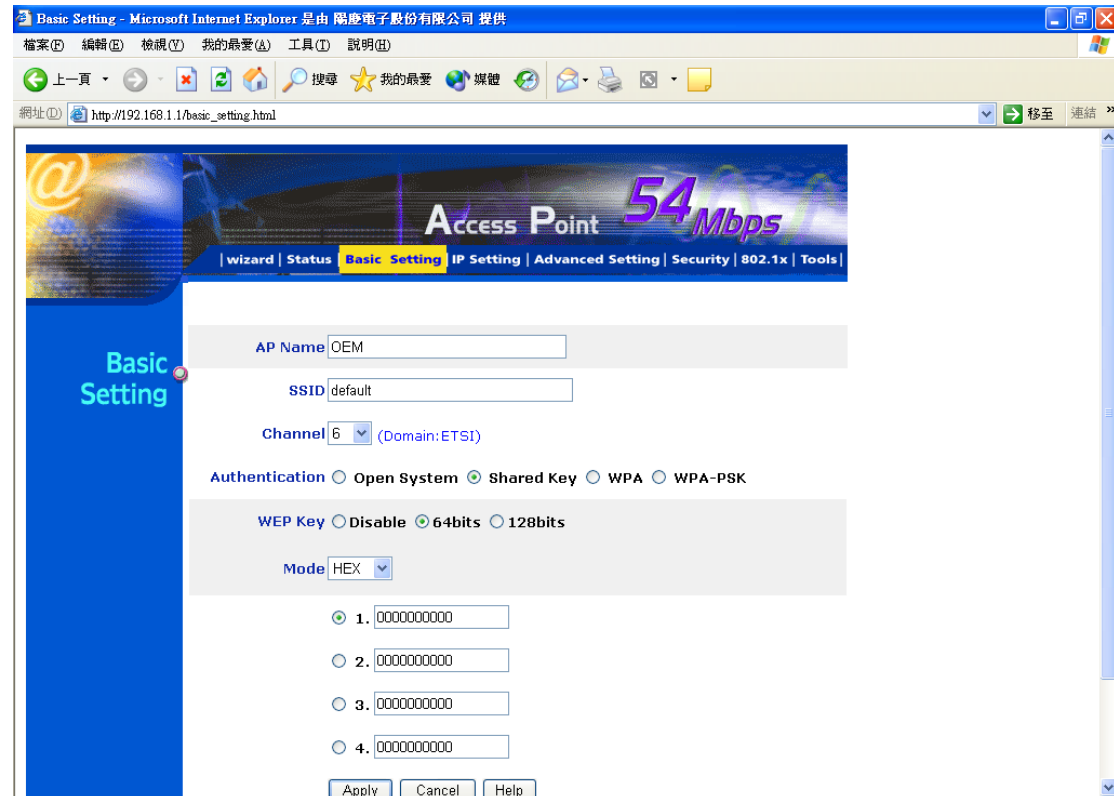
View Log: Upon clicked, the page will change to log page. The log page records every event and the time that it happens.



You may clear the entries recorded in the log by clicking the “**Clear Log**” button, and refresh the screen to show the latest log entries by clicking the “**Refresh**” button.

3.2 Basic Setting

This is the page allow you to change the access point.



AP Name: The name of the AP, which can be used to identify the Access Point among the all the Access Points in the wireless network.

SSID: Service Set Identifier, which is a unique name shared among all clients and nodes in a wireless network. The SSID must be identical for each clients and nodes in the wireless network.

Channel: The channel which AP will operate in. You can select the channel range of 1 to 11 for North America (FCC) domain, 1 to 13 for European (ETSI) domain and 1 to 14 for Japanese domain.

Authentication Type: The authentication type default is set to open system. There are four options: open system; shared key; WPA; WPA-PSK. You may want to set to Shared Key when the clients and AP in the same wireless network enable the WEP encryption. All the nodes and hosts on the network must use the same authentication type. WPA is available but it is required to set 802.1X setting first before you use WPA.

WEP Key: To disable WEP security, click on the “Disable” option. To enable WEP security, there are 2 types to select – 64bits and 128 bits. When it is selected, the key value must be entered in ASCII or HEX format.

Note: When WEP security is enabled, all the wireless clients that wish to connect to the Access Point must also have WEP enabled with the identical WEP Key value entered.

Apply: For the changes made to any of the items above to be effective, click “Apply”. The new settings are now been saved to Access Point and will be effective once the Access Point restarts.

3.3 IP Setting

This page allows you to configure the IP and DHCP settings of the Access Point.

The screenshot shows the IP Setting page in a Microsoft Internet Explorer browser. The page title is "IP Setting - Microsoft Internet Explorer 是由 陽唐電子股份有限公司 提供". The address bar shows "http://192.168.1.1/ip.html". The page content includes a navigation menu with "IP Setting" selected. The main content area has a sidebar with "IP Setting" and a main form. The form has two sections: "LAN IP" with radio buttons for "Obtain IP Automatically" and "Fixed IP". The "Fixed IP" section has input fields for "Address" (0.0.0.0), "Subnet Mask" (255.255.255.0), and "Gateway" (0.0.0.0). Below that is a "DHCP Server" section with radio buttons for "On" and "Off". The "Off" section has an "IP Range" section with "From" (192.168.1.2) and "to" (192.168.1.101) fields, and a "DNS Server" field (0.0.0.0). At the bottom are "Apply", "Cancel", and "Help" buttons.

The default IP address of this access point is 192.168.1.1 with the subnet mask of 255.255.255.0. You can type in other values for IP Address, Subnet Mask and Gateway and click “**Apply**” button for the changes to be effective.

You can also set the Access Point to obtain the IP from a DHCP server, but it is not

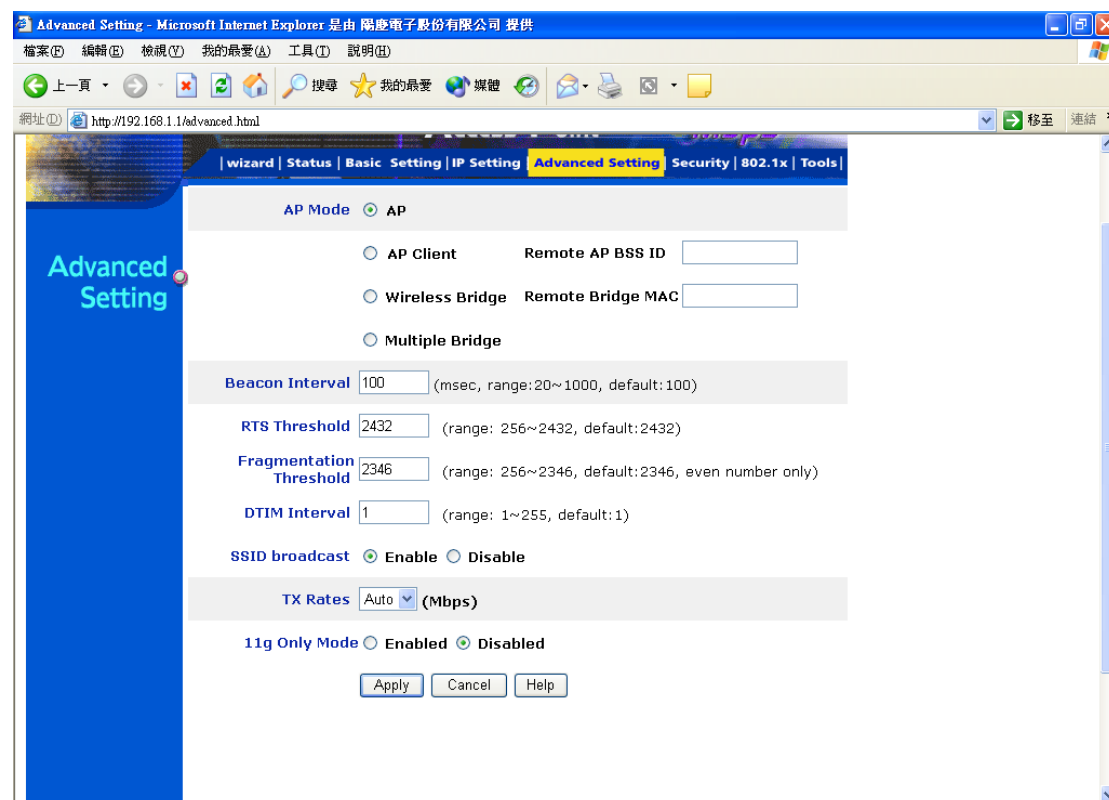
recommended. Select the option “Obtain IP Automatically” and click “**Apply**” button for the changes to be effective.

DHCP Server: It is not recommended to enable the DHCP Server if you have a DHCP server running in your LAN network because it probably will cause possible the conflict of IP assignment. Enable the DHCP server function by selecting the option “On”, and enter the IP range.

Click “**Apply**” for the changes to be effective.

3.4 Advanced Setting

This page contains configurations for advanced users, which the change reflects the wireless performance and operating modes.



AP Mode: Select one of the AP operating modes for different application of Access Point.

1. **AP** – The normal Access Point operating mode which forms a wireless ESS network with its wireless clients.
2. **AP Client** – Acts as an Ethernet-to-Wireless Bridge, which allows a LAN or a single computer station to join a wireless ESS network through it. You must make sure SSID and Channel is set the same as that AP you wish to connect.

Remote AP BSS ID: key in the LAN Mac address (NOT wireless Mac address) of the AP that you wish to get connected. Please note that if you leave Mac address as 000000000000, then you will get connected by the SSID that is set in you AP.

3. **Wireless Bridge** – A pair of APs operating under Bridge mode to act as the bridge that connect two Ethernet networks or Ethernet enabled clients together. You must make sure that the SSID and Channel is set the same as that AP you wish to connect.

Remote Bridge MAC filed: key in the **LAN Mac address** (NOT wireless Mac address) of the AP that you wish to get connected.

4. **Multiple Bridge** – A group of APs which consists of two or more APs operating under Multiple Bridge mode, that can connect two or more Ethernet networks or Ethernet enabled clients together.

Note: All APs have to use the same **Channel** and **SSID** in order to set a Multiple Bridge network.

Beacon Interval: To set the period of time in milliseconds that AP sends out a beacon. Default is 100 milliseconds.

RTS Threshold: To set the size of RTS/CTS packet size. Default is 2432 bytes.

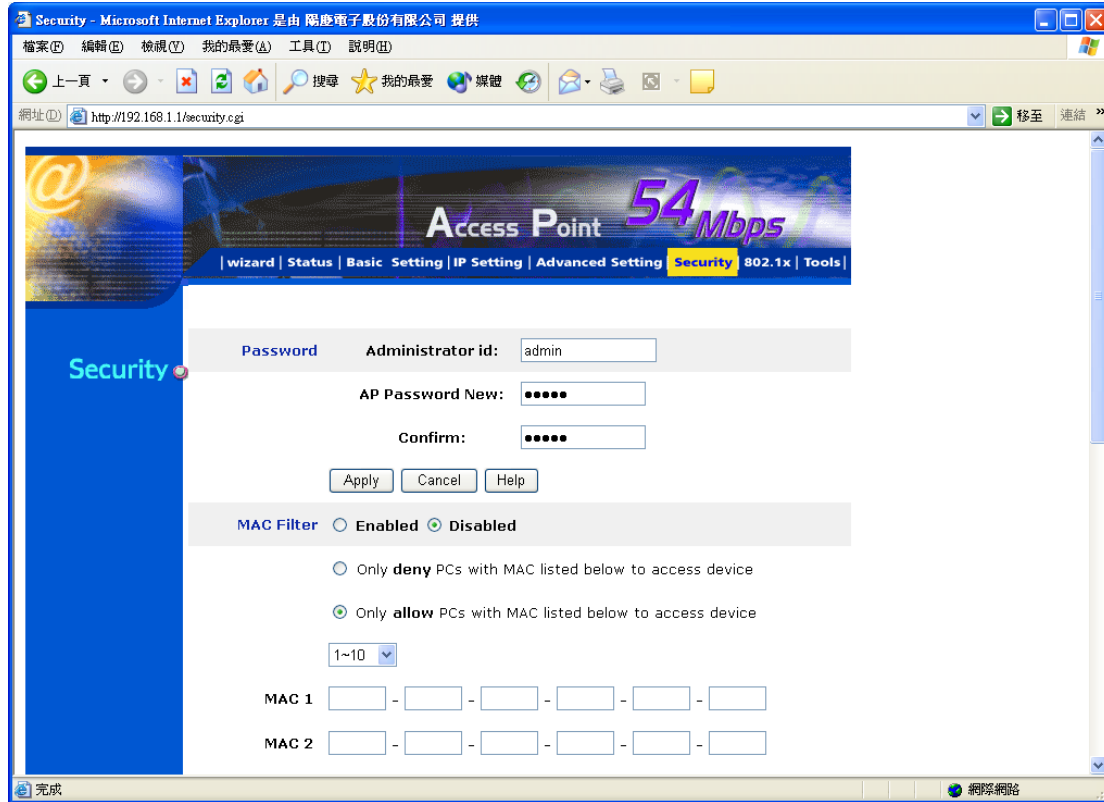
Fragmentation Threshold: To set the number of bytes used for the fragmentation boundary for directed messages. Default is 2436 bytes.

DTIM Interval: This value indicates the interval of the Delivery Traffic Indication Message (DTIM). A DTIM field is a countdown field informing clients of the next window for listening to broadcast and multicast messages. When the access point has buffered broadcast or multicast messages for associated clients, it sends the next DTIM with a DTIM interval value. Access point clients hear the beacons and awaken to receive the broadcast and multicast messages.

SSID Broadcast: While SSID Broadcast is enabled, all wireless clients will be able to communicate with the access point. For secure purpose, you may want to disable SSID broadcast to allow only those wireless clients with the AP SSID to communicate with the access point.

3.5 Security

This page is where you configure the security features supported by this Access Point.



Password: Allow you to change the new login password. Here are the necessary steps:

1. Enter the new password in the “**AP Password New:**” field.
2. Enter the new password again in the “**Confirm**” field.
3. Click “**Apply**”

MAC Filter: MAC Filter function controls the MAC of the network devices that are listed in this table for access authorization or denial. When MAC Filter is enabled, by selecting the “**Enabled**” radio box, select one of two choices:

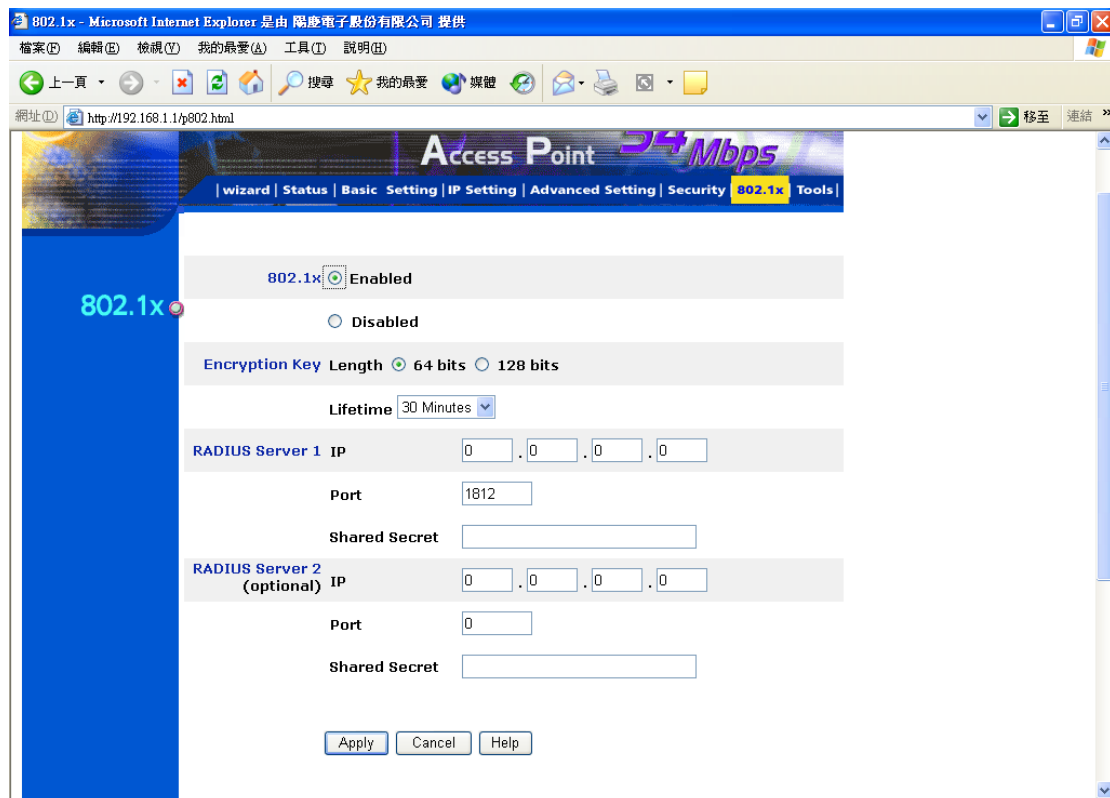
- Only deny PCs with MAC listed below to access device
- Only allow PCs with MAC listed below to access device

The maximum number of MAC addresses that can be stored is 50. You can browse through the MAC address saved by selecting the drop-down box.

For any changes made in the security page, click “**Apply**” for the changes to be effective.

3.6 802.1x

There are three essential components to the 802.1x infrastructure: (1) Supplicant, (2) Authenticator and (3) Server. The Access Point serves as an Authenticator, and the EAP methods used must be supported by the backend Radius Server. The 802.1x security supports MD5 and TLS Extensive Authentication Protocol (EAP). Please follow the steps below to configure 802.1x security.



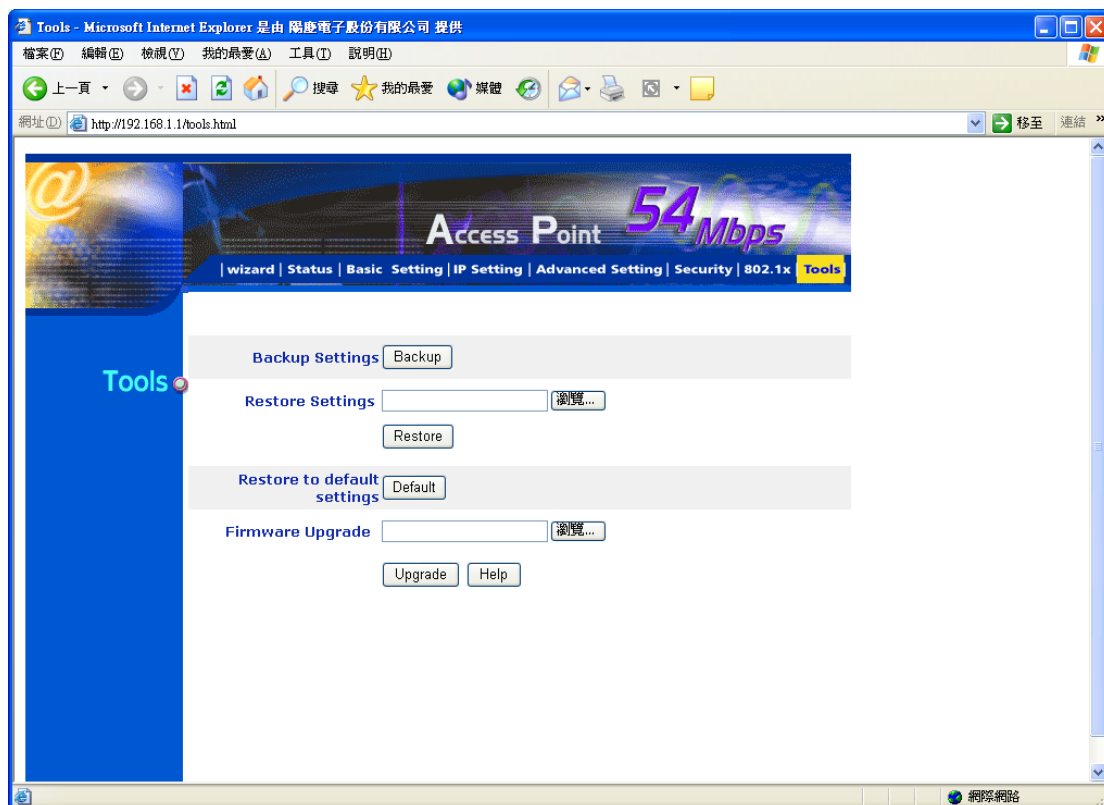
1. Enable 802.1x security by selecting “Enable”.
2. If MD5 EAP method is used then you can skip step 2 and go to step 3.
3. Select the **Encryption Key Length Size** ranging from 64 to 128 Bits that you would like to use. Select the **Lifetime of the Encryption Key** from 5 Minutes to 1 Day. As soon as the lifetime of the Encryption Key is over, the Encryption Key will be renewed by the Radius server.
4. Enter the **IP address**, the **Port** and the **Shared Secret** used by the **Primary** Radius Server.
5. Enter the **IP address**, the **Port** and the **Shared Secret** used by the **Secondary** Radius Server.

6. Click “**Apply**” button for the 802.1x settings to take effect after Access Point reboots itself.

Note: As soon as 802.1x security is enabled, all the wireless client stations that are connect to the Access Point currently will be disconnected. The wireless clients must be configured manually to authenticate themselves with the Radius server to be reconnected.

3.7 Tools

Four functions are provided in this page, Backup, Restore Settings, Restore default settings and Firmware Upgrade.



Backup Settings: Click on “**Backup**” button, which will open a FileSave Dialog box, where you get to save all the current settings and configurations to a file.

Restore Settings: Click on the “Browse” button to open a FileOpen Dialog box, where you get to select the file, which you save previous settings and configurations. Upon selecting the saved file, click “**Restore**” and complete the restore process when the access point re-operates after it restarts.

Restore to default settings: Click on “Default” button to restore the access point

back to its manufacture default settings.

Firmware Upgrade: Click on the “**Browse**” button to open a FileOpen Dialog box, where you get to select the firmware file, which you download from the web for the latest version. Upon selecting the firmware file, click “**Upgrade**” and complete the firmware upgrade process when the Access Point re-operates after it restarts.

4. Glossary

Access Point: An internetworking device that seamlessly connects wired and wireless networks.

Ad-Hoc: An independent wireless LAN network formed by a group of computers, each with a network adapter.

AP Client: One of the additional AP operating modes offered by 54Mbps Access Point, which allows the Access Point to act as an Ethernet-to-Wireless Bridge, thus a LAN or a single computer station can join a wireless ESS network through it.

ASCII: American Standard Code for Information Interchange, ASCII, is one of the two formats that you can use for entering the values for WEP key. It represents English letters as numbers from 0 to 127.

Authentication Type: Indication of an authentication algorithm which can be supported by the Access Point:

1. Open System: Open System authentication is the simplest of the available authentication algorithms. Essentially it is a null authentication algorithm. Any station that requests authentication with this algorithm may become authenticated if 802.11 Authentication Type at the recipient station is set to Open System authentication.
2. Shared Key: Shared Key authentication supports authentication of stations as either a member of those who knows a shared secret key or a member of those who does not.

Backbone: The core infrastructure of a network, which transports information from one central location to another where the information is unloaded into a local system.

Bandwidth: The transmission capacity of a device, which is calculated by how much data the device can transmit in a fixed amount of time expressed in bits per second (bps).

Beacon: A beacon is a packet broadcast by the Access Point to keep the network synchronized. Included in a beacon are information such as wireless LAN service area, the AP address, the Broadcast destination addresses, time stamp, Delivery Traffic

Indicator Maps, and the Traffic Indicator Message (TIM).

Bit: A binary digit, which is either 0 or 1 for value, is the smallest unit for data.

Bridge: An internetworking function that incorporates the lowest 2 layers of the OSI network protocol model.

Browser: An application program that enables one to read the content and interact in the World Wide Web or Intranet.

BSS: BSS stands for “Basic Service Set”. It is an Access Point and all the LAN PCs that associated with it.

Channel: The bandwidth which wireless Radio operates is divided into several segments, which we call them “Channels”. AP and the client stations that it associated work in one of the channels.

CSMA/CA: In local area networking, this is the CSMA technique that combines slotted time -division multiplexing with carrier sense multiple access/collision detection (CSMA/CD) to avoid having collisions occur a second time. This works best if the time allocated is short compared to packet length and if the number of situations is small.

CSMA/CD: Carrier Sense Multiple Access/Collision Detection, which is a LAN access method used in Ethernet. When a device wants to gain access to the network, it checks to see if the network is quiet (senses the carrier). If it is not, it waits a random amount of time before retrying. If the network is quiet and two devices access the line at exactly the same time, their signals collide. When the collision is detected, they both back off and wait a random amount of time before retrying.

DHCP: Dynamic Host Configuration Protocol, which is a protocol that lets network administrators manage and allocate Internet Protocol (IP) addresses in a network. Every computer has to have an IP address in order to communicate with each other in a TCP/IP based infrastructure network. Without DHCP, each computer must be entered in manually the IP address. DHCP enables the network administrators to assign the IP from a central location and each computer receives an IP address upon plugged with the Ethernet cable everywhere on the network.

DSSS: Direct Sequence Spread Spectrum. DSSS generates a redundant bit pattern for each bit to be transmitted. This bit pattern is called a chip (or chipping code). The longer the chip, the greater the probability that the original data can be recovered. Even if one or more bits in the chip are damaged during transmission, statistical techniques embedded in the radio can recover the original data without the need for retransmission. To an unintended receiver, DSSS appears as low power wideband noise and is rejected (ignored) by most narrowband receivers.

Dynamic IP Address: An IP address that is assigned automatically to a client station in a TCP/IP network by a DHCP server.

Encryption: A security method that uses a specific algorithm to alter the data transmitted, thus prevent others from knowing the information transmitted.

ESS: ESS stands for “Extended Service Set”. More than one BSS is configured to become Extended Service Set. LAN mobile users can roam between different BSSs in an ESS.

ESSID: The unique identifier that identifies the ESS. In infrastructure association, the stations use the same ESSID as AP’s to get connected.

Ethernet: A popular local area data communications network, originally developed by Xerox Corp., that accepts transmission from computers and terminals. Ethernet operates on a 10/100 Mbps base transmission rate, using a shielded coaxial cable or over shielded twisted pair telephone wire.

Fragmentation: When transmitting a packet over a network medium, sometimes the packet is broken into several segments, if the size of packet exceeds that allowed by the network medium.

Fragmentation Threshold: The Fragmentation Threshold defines the number of bytes used for the fragmentation boundary for directed messages. The purpose of "Fragmentation Threshold" is to increase the transfer reliability thru cutting a MAC Service Data Unit (MSDU) into several MAC Protocol Data Units (MPDU) in smaller size. The RF transmission can not allow to transmit too big frame size due to the heavy interference caused by the big size of transmission frame. But if the frame size is too small, it will create the overhead during the transmission.

Gateway: a device that interconnects networks with different, incompatible communication protocols.

HEX: Hexadecimal, HEX, consists of numbers from 0 – 9 and letters from A – F.

IEEE: The Institute of Electrical and Electronics Engineers, which is the largest technical professional society that promotes the development and application of electrotechnology and allied sciences for the benefit of humanity, the advancement of the profession. The IEEE fosters the development of standards that often become national and international standards.

Infrastructure: An infrastructure network is a wireless network or other small network in which the wireless network devices are made a part of the network through the Access Point which connects them to the rest of the network.

ISM Band: The FCC and their counterparts outside of the U.S. have set aside bandwidth for unlicensed use in the ISM (Industrial, Scientific and Medical) band. Spectrum in the vicinity of 2.4GHz, in particular, is being made available worldwide.

MAC Address: Media Access Control Address is a unique hex number assigned by the manufacturer to any Ethernet networking device, such as a network adapter, that allows the network to identify it at the hardware level.

Multicasting: Sending data to a group of nodes instead of a single destination.

Multiple Bridge – One of the additional AP operating modes offered by 54Mbps Access Point, which allows a group of APs that consists of two or more APs to connect two or more Ethernet networks or Ethernet enabled clients together. The way that multiple bridge setups is based on the topology of Ad-Hoc mode.

Node: A network junction or connection point, typically a computer or workstation.

Packet: A unit of data routed between an origin and a destination in a network.

PLCP: Physical layer convergence protocol

PPDU: PLCP protocol data unit

Preamble Type: During transmission, the PSDU shall be appended to a PLCP preamble and header to create the PPDU. Two different preambles and headers are defined as the mandatory supported long preamble and header which interoperates with the current 1 and 2 Mbit/s DSSS specification as described in IEEE Std 802.11-1999, and an optional short preamble and header. At the receiver, the PLCP preamble and header are processed to aid in demodulation and delivery of the PSDU. The optional short preamble and header is intended for application where maximum throughput is desired and interoperability with legacy and non-short-preamble capable equipment is not consideration. That is, it is expected to be used only in networks of like equipment that can all handle the optional mode. (IEEE 802.11b standard)

PSDU: PLCP service data unit

Roaming: A LAN mobile user moves around an ESS and enjoys a continuous connection to an Infrastructure network.

RTS: Request To Send. An RS-232 signal sent from the transmitting station to the receiving station requesting permission to transmit.

RTS Threshold: Transmitters contending for the medium may not be aware of each other. RTS/CTS mechanism can solve this “Hidden Node Problem”. If the packet size is smaller than the preset RTS Threshold size, the RTS/CTS mechanism will NOT be enabled.

SSID: Service Set Identifier, which is a unique name shared among all clients and nodes in a wireless network. The SSID must be identical for each clients and nodes in the wireless network.

Subnet Mask: The method used for splitting IP networks into a series of sub-groups, or subnets. The mask is a binary pattern that is matched up with the IP address to turn part of the host ID address field into a field for subnets.

TCP/IP: Transmission Control Protocol/ Internet Protocol. The basic communication language or protocol of the Internet. It can also be used as a communications protocol in a private network, i.e. intranet or internet. When you are set up with direct access to the Internet, your computer is provided with a copy of the TCP/IP program just as

every other computer that you may send messages to or get information from also has a copy of TCP/IP.

Throughput: The amount of data transferred successfully from one point to another in a given period of time.

WEP: Wired Equivalent Privacy (WEP) is an encryption scheme used to protect wireless data communication. To enable the icon will prevent other stations without the same WEP key from linking with the AP.

Wireless Bridge – One of the additional AP operating modes offered by 54mpbs Access Point, which allows a pair of APs to act as the bridge that connects two Ethernet networks or Ethernet enabled clients together.

Federal Communication Commission Interference Statement

This equipment has been tested and found to comply with the limits for a Class B digital device, pursuant to Part 15 of the FCC Rules. These limits are designed to provide reasonable protection against harmful interference in a residential installation. This equipment generates, uses and can radiate radio frequency energy and, if not installed and used in accordance with the instructions, may cause harmful interference to radio communications. However, there is no guarantee that interference will not occur in a particular installation. If this equipment does cause harmful interference to radio or television reception, which can be determined by turning the equipment off and on, the user is encouraged to try to correct the interference by one of the following measures:

- Reorient or relocate the receiving antenna.
- Increase the separation between the equipment and receiver.
- Connect the equipment into an outlet on a circuit different from that to which the receiver is connected.
- Consult the dealer or an experienced radio/TV technician for help.

This device complies with Part 15 of the FCC Rules. Operation is subject to the following two conditions: (1) This device may not cause harmful interference, and (2) this device must accept any interference received, including interference that may cause undesired operation.

FCC Caution: Any changes or modifications not expressly approved by the party responsible for compliance could void the user's authority to operate this equipment.

IMPORTANT NOTE:

FCC Radiation Exposure Statement:

This equipment complies with FCC radiation exposure limits set forth for an uncontrolled environment. This equipment should be installed and operated with minimum distance 20cm between the radiator & your body.

This transmitter must not be co-located or operating in conjunction with any other antenna or transmitter.