

Quick Installation Guide

AC1200 Wireless LAN Concurrent Dual Band Gigabit Router 1WAN + 4LAN

Package Contents	Page 1
Build Network Connections	Page 2
Network Setup	Page 3

Package Contents

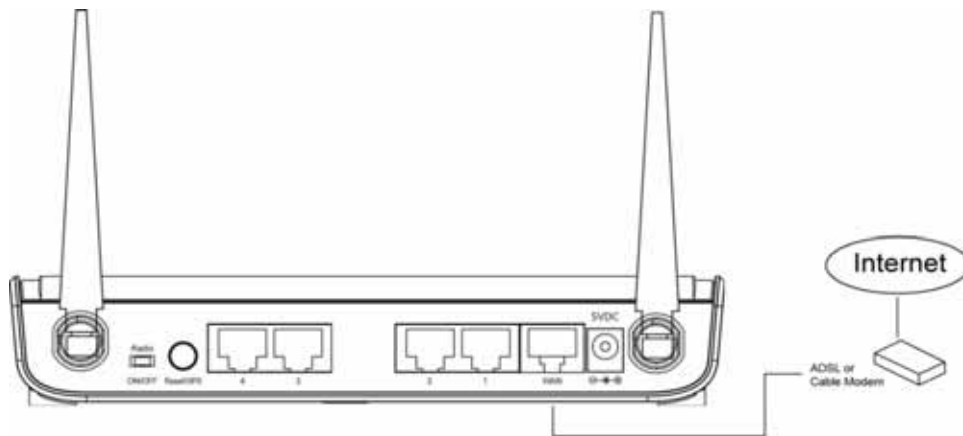
Before starting to use this router, please check if there's anything missing in the package, and contact your dealer of purchase to claim for missing items:

- Broadband Gigabit Router (main body, 1 pcs)
- Quick Installation Guide (1 pcs)
- User Manual CD-ROM (1 pcs)
- A/C Power Adapter (12VDC / 1.5A) (1 pcs)
- Operating Temperature (32 °F to 104 °F (0 °C to 40 °C))

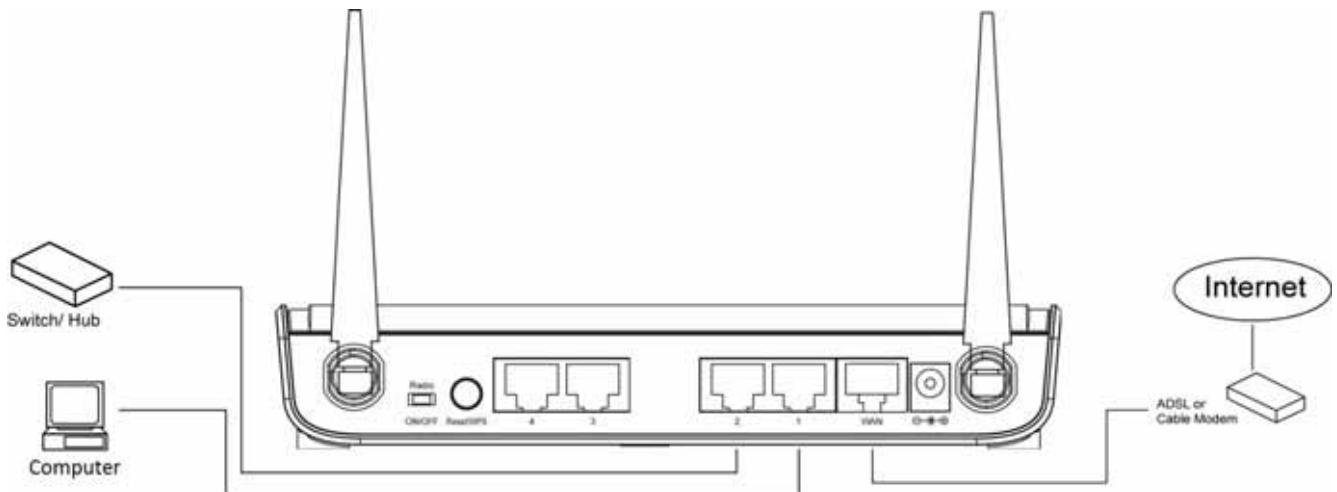
Build Network Connections

Please follow the following instructions to setup wireless router:

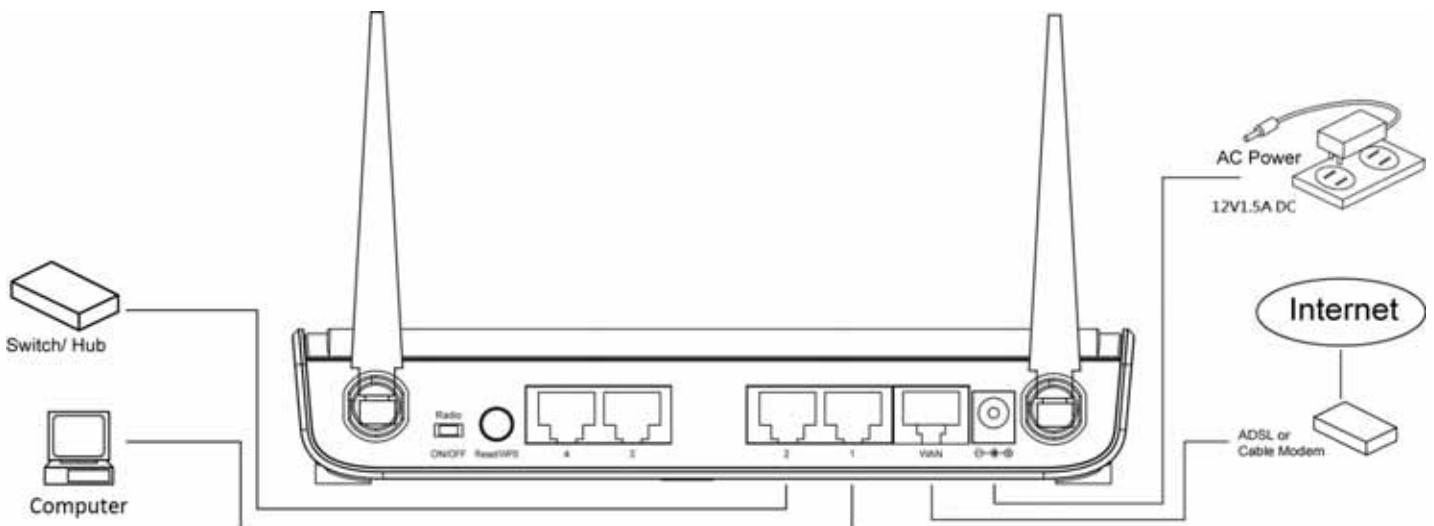
1. Connect your xDSL / Cable modem to the WAN port of router by Ethernet cable.



2. Connect all your computers, network devices (network-enabled consumer devices other than computers, like game console, or switch / hub) to the LAN port of the router.



3. Connect the A/C power adapter to the wall socket, and then connect it to the 'Power' socket of the router.

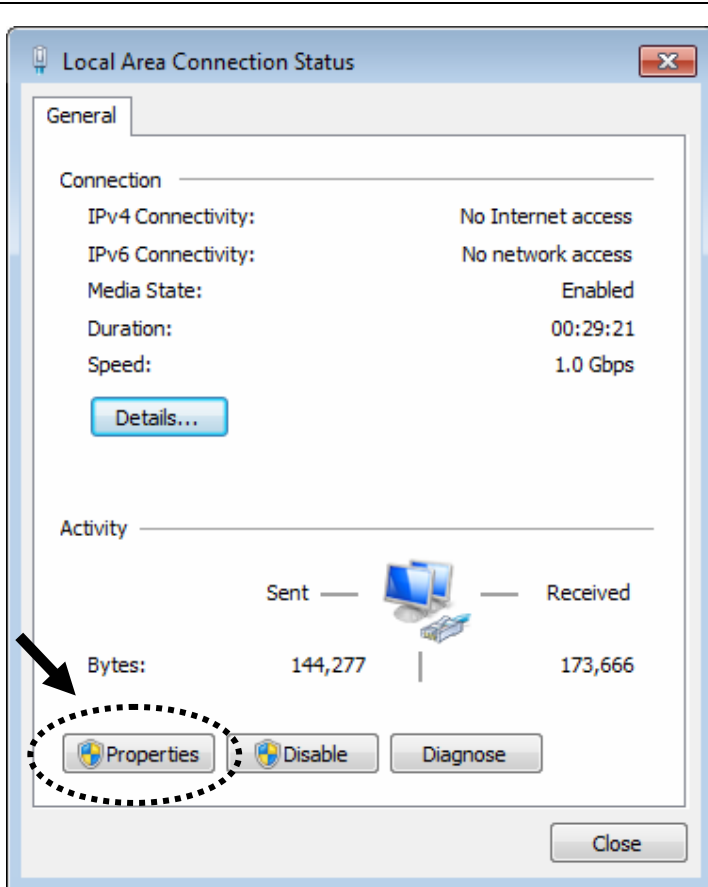


Please check all LEDs on the front panel. 'PWR' LED should be steadily on, WAN and LAN LEDs should be on if the computer / network device connected to the respective port of the router is powered on and correctly connected.

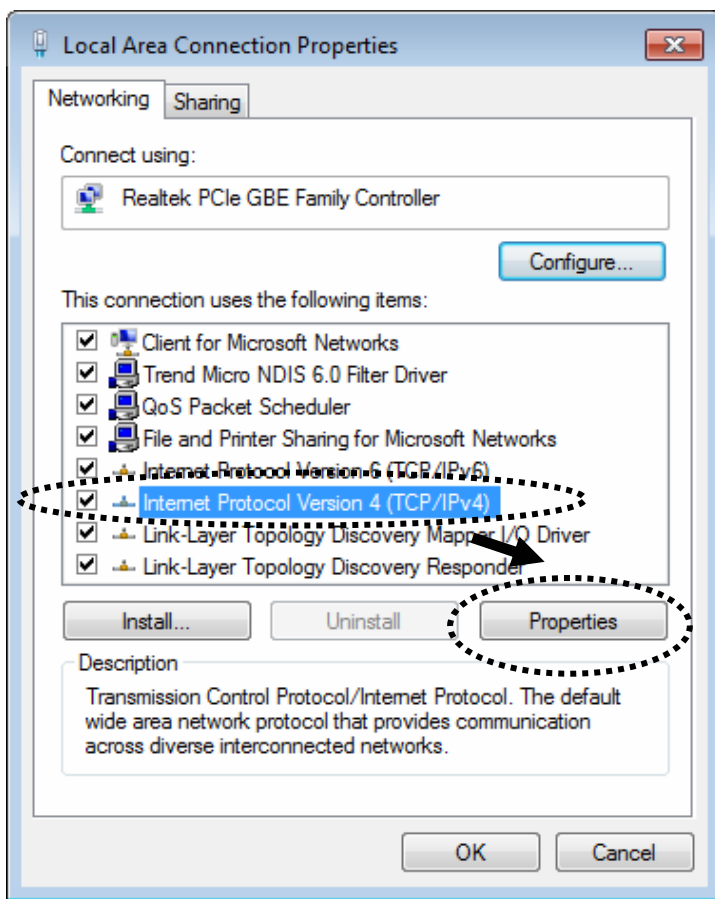
If 'PWR' LED is still off and you're sure that all cable connections are connected properly, please contact your dealer of purchase for assistance.

Network Setup

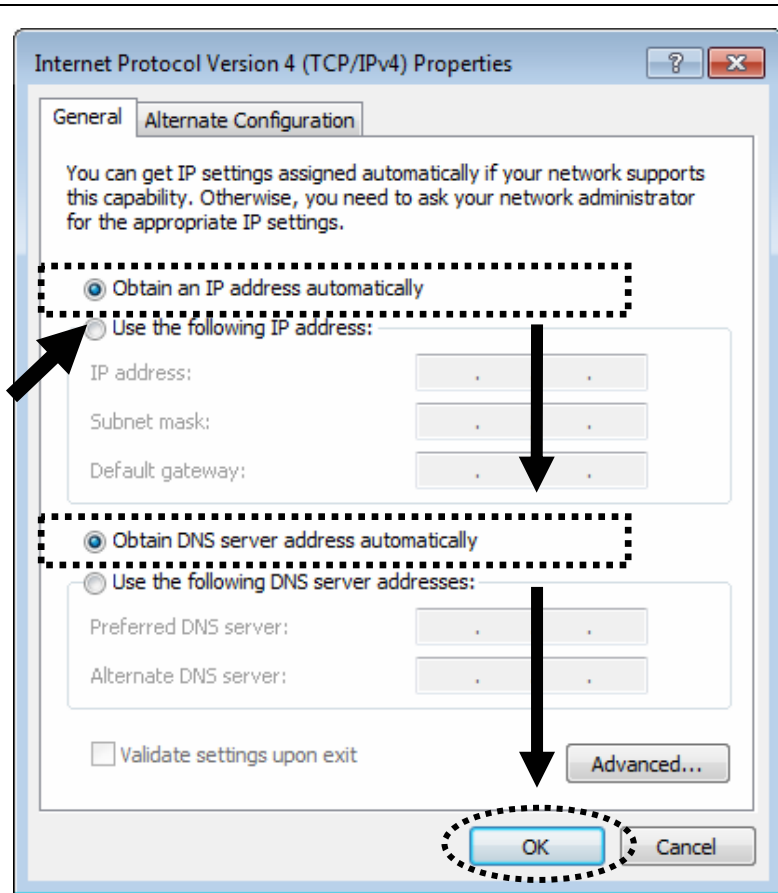
Please use the web browser to configure the wireless router. A computer with wired Ethernet connection to the wireless router is required for this first-time configuration.



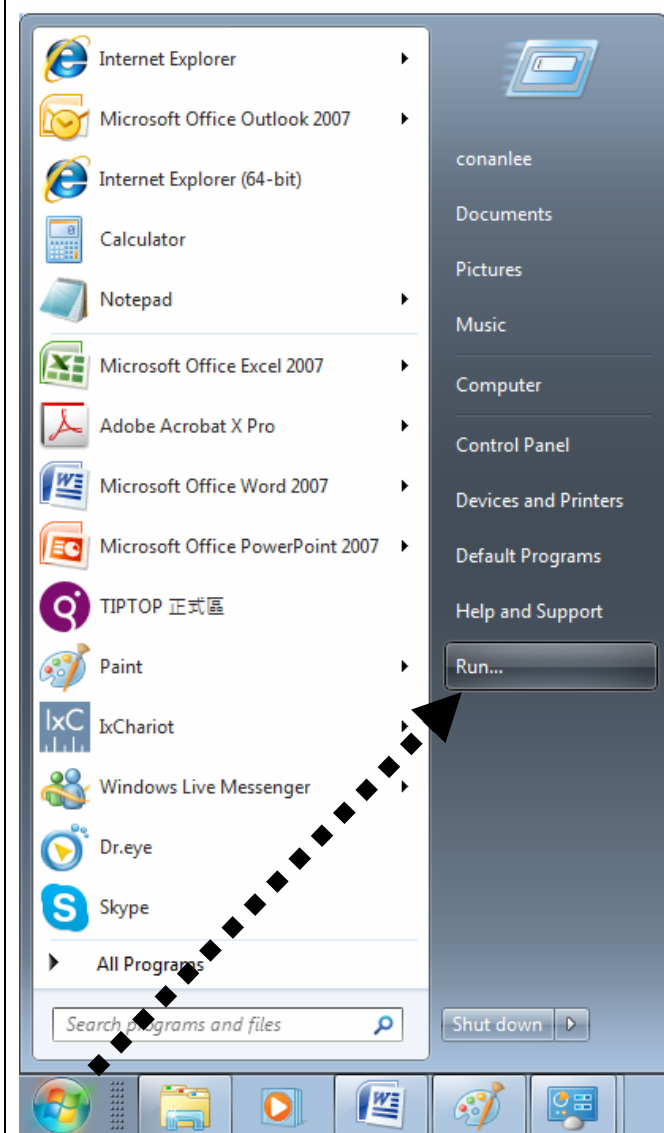
1. Set your computer to obtain an IP address from wireless router: click 'Start' button (it should be located at lower-left corner of your computer), then click control panel. Click **Network and Sharing Center**, then click **Local Area Connection**. Click 'Properties'.



2. **Local Area Connection Properties** window will appear. Select **Internet Protocol (TCP/IP)**, then click 'Properties'.



3. Select 'Obtain an IP address automatically' and 'Obtain DNS server address automatically', then click 'OK'.



4. After the IP address setup is complete, please click 'Start' -> 'Run' at the bottom-lower corner of your desktop, then input 'cmd' and click 'OK'.

```
C:\Users\ConanLee>ipconfig

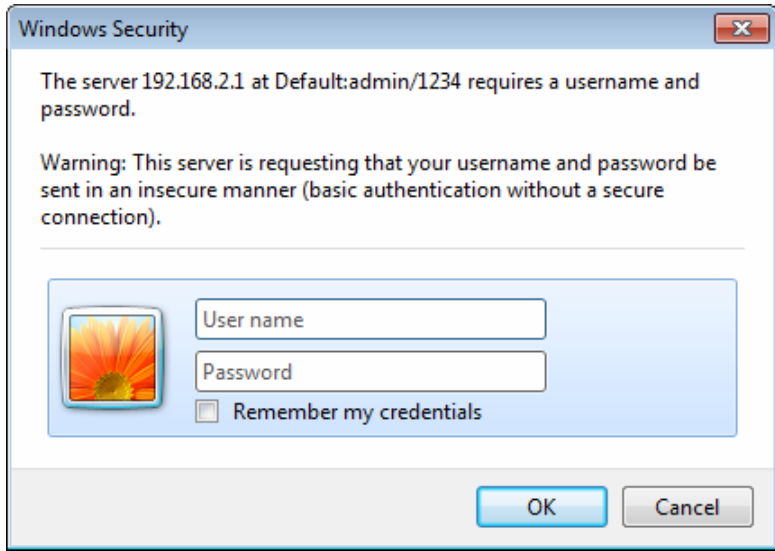
Windows IP Configuration

Ethernet adapter Local Area Connection:

    Connection-specific DNS Suffix  . : 
    Link-local IPv6 Address . . . . . : fe80::7025:89e1:58e5:5762%13
    IPv4 Address. . . . . : 192.168.2.100
    Subnet Mask . . . . . : 255.255.255.0
    Default Gateway . . . . . : 192.168.2.1
```

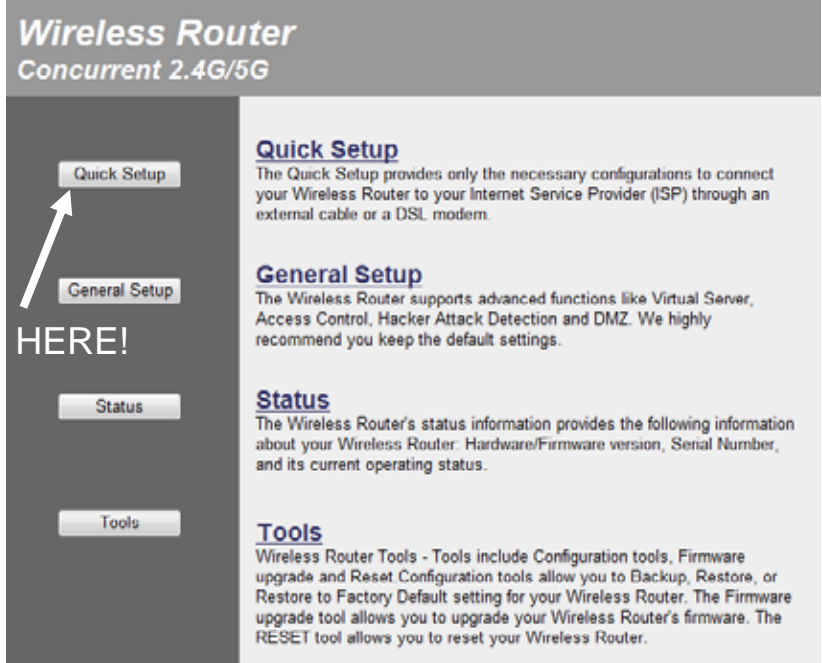
HERE!

5. Input 'ipconfig', then press 'Enter' key. Please check the IP address followed by 'Default Gateway' (In this example, the IP address of router is 192.168.2.1) **Please note that this value may be different.**



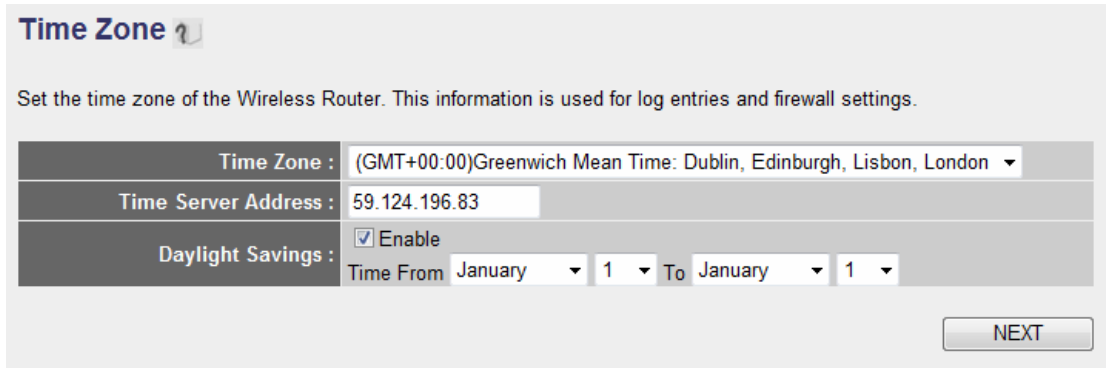
6. Start the web browser and input the IP address of wireless router in address bar, and the following message should be shown. Please input user name and password, then click 'OK' to access web management interface of wireless router.

Default User name: admin
Default Password: 1234



HERE!

7. Click 'Quick Setup'



8. Select time zone of the area where you live, then click 'NEXT'.

Broadband type
Specify the wan connection type required by your Internet Service Provider. Specify a Cable modem, Fixed-IP xDSL or PPTP xDSL connection

Cable Modem
A connection through a cable modem requires minimal configuration. When you set up an account with your Cable provider, the Cable provider and your Wireless Router will automatically establish a connection, so you probably do not need to enter anything more.

Fixed-IP xDSL
Some xDSL Internet Service Providers may assign a Fixed IP Address for your Wireless Router. If you have been provided with this information, choose this option and enter the assigned IP Address, Subnet Mask, Gateway IP Address and DNS IP Address for your Wireless Router.

PPPoE xDSL
If you connect to the Internet using an xDSL Modem and your ISP has provided you with a Password and a Service Name, then your ISP uses PPPoE to establish a connection. You must choose this option and enter the required information.

PPTP xDSL
If you connect to the Internet using an xDSL Modem and your ISP has provided you with a Password, Local IP Address, Remote IP Address and a Connection ID, then your ISP uses PPTP to establish a connection. You must choose this option and enter the required information.

L2TP xDSL
Layer Two Tunneling Protocol is a common connection method used in xDSL connections.

Telstra Big Pond
If your Internet service is provided by Telstra Big Pond in Australia, you will need to enter your information below. This information is provided by Telstra BigPond.

9. Select a broadband type of the Internet connection you're using, then click 'NEXT'.

3. IP Address Info

PPPoE

Enter the User Name and Password required by your ISP in the appropriate fields. If your ISP has provided you with a "Service Name" enter it in the Service Name field, otherwise, leave it blank.

User Name :	<input type="text"/>
Password :	<input type="password"/>
Service Name :	<input type="text"/>
MTU :	1392 (512<=MTU<=1492)
Connection Type :	Continuous <input type="button" value="Connect"/> <input type="button" value="Disconnect"/>
Idle Time Out :	10 (1-1000 Minute)

10. Please input the Internet connection parameters, you should use the value provided by your Internet service provider.

Click 'OK' when you finish.

(The content of this page will vary depends on the connection method you selected in step 9)

Save settings successfully!

Please press APPLY button to restart the system to make the changes take effect.

11. Click 'APPLY'.

System Restarting! Please wait for a while !

12. When you see this message, the router will be ready with new settings within 40 seconds.

13. Please use your computer to connect to any website on Internet, or start any Internet application and see if they're working properly.

For instructions of advanced settings and wireless network setup, please refer to user manual in supplied CD-ROM.

Federal Communication Commission Interference Statement

This equipment has been tested and found to comply with the limits for a Class B digital device, pursuant to Part 15 of the FCC Rules. These limits are designed to provide reasonable protection against harmful interference in a residential installation. This equipment generates, uses and can radiate radio frequency energy and, if not installed and used in accordance with the instructions, may cause harmful interference to radio communications. However, there is no guarantee that interference will not occur in a particular installation. If this equipment does cause harmful interference to radio or television reception, which can be determined by turning the equipment off and on, the user is encouraged to try to correct the interference by one or more of the following measures:

- Reorient or relocate the receiving antenna.
- Increase the separation between the equipment and receiver.
- Connect the equipment into an outlet on a circuit different from that to which the receiver is connected.
- Consult the dealer or an experienced radio/TV technician for help.

RF Exposure Warning

The equipment complies with RF exposure limits set forth for an uncontrolled environment. The antenna(s) used for this transmitter must not be co-located or operating in conjunction with any other antenna or transmitter.

You are cautioned that changes or modifications not expressly approved by the party responsible for compliance could void your authority to operate the equipment.

This equipment should be installed and operated with a minimum distance of 20 centimeters between the radiator and your body.

