

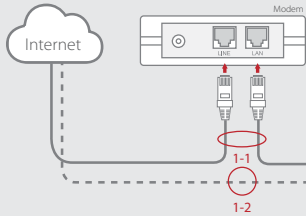
Quick Start Guide

Wireless or Wired, it's smooth and seamless
AC1200 Dual Band Smart Wi-Fi Router

QUANTUM T3

1. Connecting the Internet

You can connect your product to the Internet over a direct WAN or through a modem.
1-1 If you access Internet by the modem such as ADSL, VDSL, cable and FTTH, plug one end of the Ethernet cable to the Internet port of your product and the other end to the LAN port of your modem.
1-2 If you access the Internet by WAN broadband, plug the Ethernet cable to the Internet port of your product.



Use it as Router

3. Powering On
 1. Plug in the AC power adaptor from the power connector to an electrical outlet.
 2. If the power successfully turns on, a white light on the power LED is turned on.
Note: Use only the AC power adaptor provided in this product. Using other adaptors may damage the product.

Warning

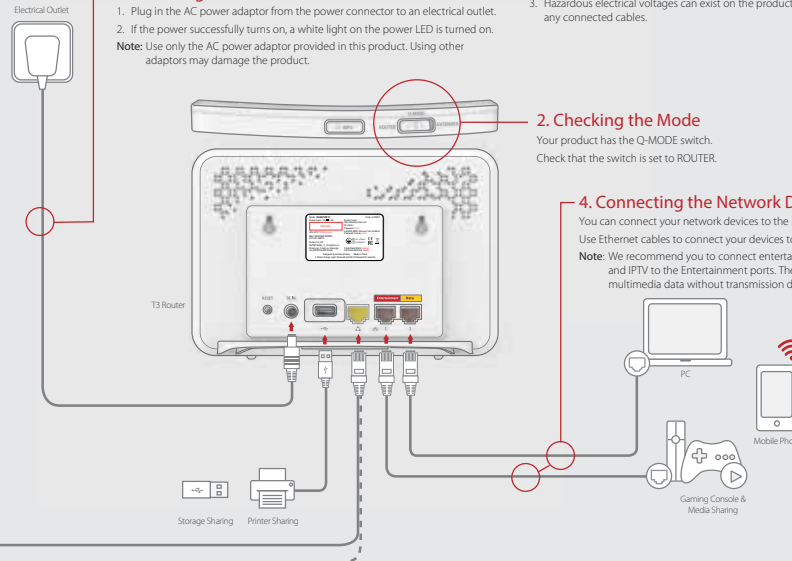
1. Connect all devices before you plug any power cords into the electrical outlet.
2. Always turn off the product and network devices before you connect or disconnect any cables.
3. Hazardous electrical voltages can exist on the product and peripheral devices and can be present on any connected cables.

2. Checking the Mode

Your product has the Q-MODE switch. Check that the switch is set to ROUTER.

4. Connecting the Network Devices

You can connect your network devices to the router over wired or wirelessly. Use Ethernet cables to connect your devices to the router over a wired Ethernet connection.
Note: We recommend you to connect entertainment devices such as OTT, gaming console and IPTV to the Entertainment ports. The ports have the priority in transmitting multimedia data without transmission delay or interruption.



Use it as Extender

3. Configuring WPS

You can configure WPS between the extender and the router.
3-1 Press the WPS buttons on both devices within 2 minutes. When WPS is successfully configured, the blue light blinks on the Wireless LED.
Note: If you use another router other than HUMAX product, the white light blinks on the Wireless LED, which means your extender is in repeater mode.

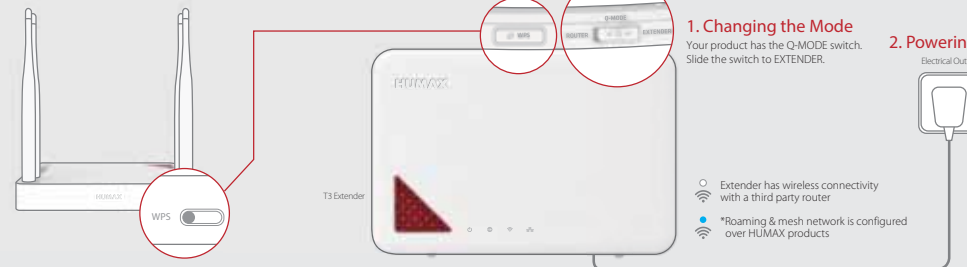
3-2 Check the network when the connection is complete. If you connect the extender to a HUMAX router, both network names are the same as if they configure a single network. But, if you use a router other than HUMAX products, the network name of your extender will copy the routers name following Ext2G or Ext5G. (ex: Router_Ext5G)

1. Changing the Mode

Your product has the Q-MODE switch. Slide the switch to EXTENDER.

2. Powering On

- With HUMAX QUANTUM Series, you will experience seamless Wi-Fi network at any moment.
- T1, T2, T3, T3A, X1 and X3 support both roaming & mesh network, and T5, T7 and T9 support roaming network only.
- Roaming & mesh feature is configured over HUMAX products. (*)



LEDs on the Front Panel

After the product is successfully registered on the network, the LEDs illuminate continuously to indicate that the product is active and fully operational.

LED	Operation
Power	White On: Power is on.
	Off: Power is off.
Internet	White On: Internet is connected.
	White Blinking: Firmware update is in progress.
	Off: Internet is not connected.
Wireless	White On: Network is connected wirelessly.
	White Slow Blinking: WPS is in configuration. It may take 2 minutes.
	White Fast Blinking: WPS configuration is failed.
	Blue On: *Roaming & mesh network is configured through the Internet.
	Blue Slow Blinking: *Roaming & mesh network is in configuration. It may take 2 minutes.
	Blue Fast Blinking: *Roaming & mesh network configuration is failed.
Ethernet	Off: Wi-Fi is not available.
	White On: Networking device is connected to the LAN port.
	Off: No device is connected to the LAN port.
Internet, Wireless, Ethernet Blinking	Resetting the system is in progress.

Note: Blue light is turned on when the roaming & mesh network is successfully configured over HUMAX products.

Q-MODE

Your product supports **Q-MODE** that enables operating as a router or an extender. It's very simple to change the operation mode. Just slide the **Q-MODE** switch to ROUTER or EXTENDER. Then, the mode change is automatically completed.



- BOTH**: *Roaming Mode, *Mesh Mode
- ROUTER**: Router Mode, WSP Mode
- EXTENDER**: AP Mode, Repeater Mode, Media Bridge Mode

Internet Connection

You can configure the network over a wired Ethernet connection or wirelessly.

Wired

Connect the Ethernet cable between the PC and the LAN port of your product.

Wireless

1. Open the web browser.
2. Enter <http://dearmyrouter.net> to the address bar, and then press the Enter key.
3. The default ID and password are admin and nnnn. nnnn is the last 4 digits of serial number. Refer to the serial number at the bottom of your product.

Note: We recommend you to change the ID and password to secure your network. Go to **Management > Change Password** to change your password.

Welcome to QUANTUM T3!

<http://dearmyrouter.net>

192.168.1.1

ID: admin

Password: nnnn

Login

© All the default ID and password. See the bottom of the product.

Model: QUANTUM T3

Power Input: 12V 251.5A

Router Login: <http://dearmyrouter.net>

ID: admin

Password: nnnn

2-42696 SSID: We Love You So Much

Barcode

S/N: QT31000000000000000000

Mac: DCD8321000001

FCC ID: O6273

HUMAX BLDG., 2, Yeongnam-ro, Chosun-gu, Yangju-si, Gyeonggi-do, 419-934, South Korea

Trade Name/Mark: HUMAX

Full Postal Address: 100000

Designed by Humax (Korea) Made in China

* Please change Login Password and WiFi Password for Security.

Code: 4-00023



Scan the QR code to access @@@@ on your mobile device.

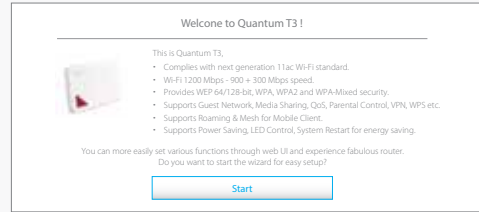
Network Configuration on Web Page

When you log in to the router for the first time, the installation wizard will appear. Then, follow the steps to configure the network.

Router Mode

1. Welcome

Click **Start**. The system will check automatically if your router is connected to the Internet.



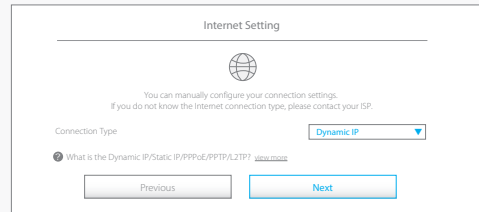
Note:

- If you want to skip the installation wizard, click **Skip**. This button is available always during installation wizard.
- We recommend you to update the firmware to the latest version when available.

2. Internet Setting

You can connect the Internet automatically or manually depending on your Internet connection type.

Note: This page appears only when your product is not connected to the Internet.

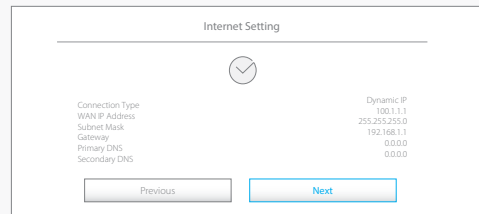


Select the connection type your ISP is using. In most cases, it will be **Dynamic IP**.

- Dynamic IP:** The Internet will be connected automatically.
- Static IP:** Enter the IP address, Subnet mask, Gateway and DNS server supplied by the ISP.
- PPPoE:** Enter the user name and password supplied by the ISP.
- PPTP or L2TP:** Enter the user name, password and VPN server supplied by the ISP.

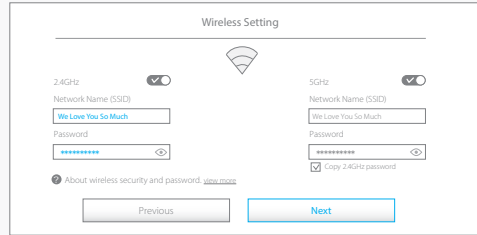
Note: For more information on the Internet connection, refer to the web manual at www.humaxdigital.com/QUANTUM.

If your router is successfully connected to the Internet, the information on the internet connection will display.



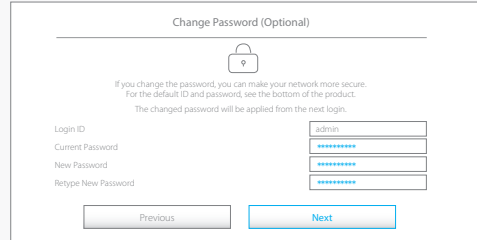
3. Wireless Network Setting

Enter your own network name and password to change the default settings. You can secure your wireless network from unauthorized users.



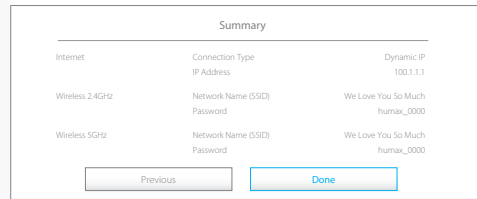
4. Password Setting

Enter your ID and password to change the default password. You can enhance the security on your network environment.



5. Summary

When you complete your network settings, the information on your network will display.



FCC warning:

Any Changes or modifications not expressly approved by the party responsible for compliance could void the user's authority to operate the equipment. This device complies with part 15 of the FCC Rules. Operation is subject to the following two conditions: (1) This device may not cause harmful interference, and (2) this device must accept any interference received, including interference that may cause undesired operation.

FCC Radiation Exposure Statement:

This equipment complies with FCC radiation exposure limits set forth for an uncontrolled environment. This equipment should be installed and operated with minimum distance 20cm from the radiator & your body. This transmitter must not be co-located or operating in conjunction with any other antenna or transmitter.

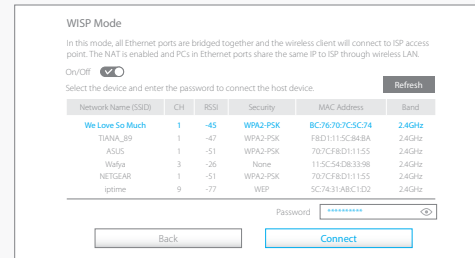
Note: This equipment has been tested and found to comply with the limits for a Class B digital device, pursuant to part 15 of the FCC Rules. These limits are designed to provide reasonable protection against harmful interference in a residential installation. This equipment generates uses and can radiate radio frequency energy and, if not installed and used in accordance with the instructions, may cause harmful interference to radio communications. However, there is no guarantee that interference will not occur in a particular installation. If this equipment does cause harmful interference to radio or television reception, which can be determined by turning the equipment off and on, the user is encouraged to try to correct the interference by one or more of the following measures:

- Reorient or relocate the receiving antenna.
- Increase the separation between the equipment and receiver.
- Connect the equipment into an outlet on a circuit different from that to which the receiver is connected.
- Consult the dealer or an experienced radio/TV technician for help.

WISP Mode

You can use wireless Internet service in Router mode.

- Log in to dearmyrouter.net, and then go to **Management > WISP Mode**.
- Set the WISP mode to **On**, and select your Internet service provider.



Extender Mode

Slide the Q-MODE switch to EXTENDER.



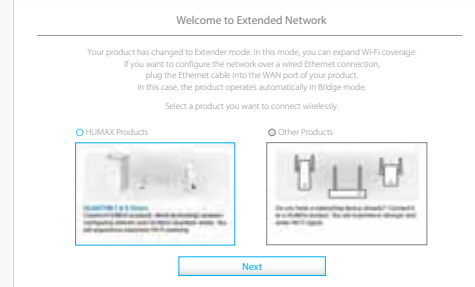
T3 operates as an extender, and configures the roaming & mesh network with a HUMAX router.

- T3 works automatically in **AP mode** if you connect it to a router over a wired Ethernet cable and use a client device wirelessly.
- T3 works automatically in **media bridge mode** if you connect it to a router wirelessly and use a client device over a wired Ethernet cable.
- T3 works automatically in **repeater mode** if you connect it wirelessly to a router other than a HUMAX router and use a client device wirelessly.
- If T3 works together with a HUMAX router, the **roaming & mesh network** is configured over the products.

1. Welcome

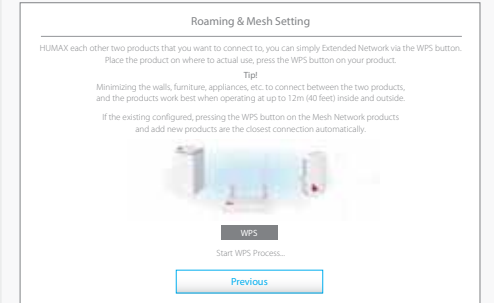
If you configure the network with **HUMAX products**, only, click **HUMAX Products** and go to **2-1. Roaming & Mesh**.

If you use a third party product other than **HUMAX**, click **Other Products** and go to **2-2. Repeater**.



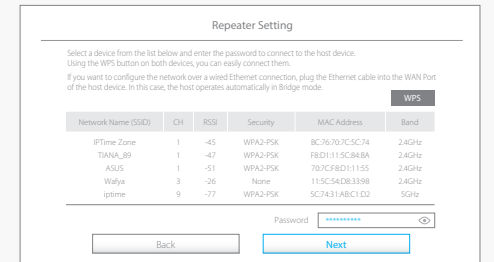
2-1. Roaming & Mesh

Just press the WPS buttons on HUMAX products within 1 second. Then, they are connected each other automatically, and configure the mesh network. You will experience seamless Wi-Fi roaming over the mesh network.



2-2. Repeater

If you have a networking device other than HUMAX products, select it from the list and then enter the password. You will experience stronger and wider Wi-Fi signal.



Home

After completing the network settings, go to **Operation Mode**. In this page, you can see the current status of your product.

