



*PRELIMINARY*

My Net N750

E2F

User Manual



## WD® Service and Support

Should you encounter a problem, please give us an opportunity to address it before returning this product. Most technical support questions can be answered through our knowledge base or e-mail support service at <http://support.wdc.com>. If the answer is not available or, if you prefer, please contact WD at the best telephone number shown below.

Your product includes 30 days of free telephone support during the warranty period. This 30-day period starts on the date of your first telephone contact with WD technical support. E-mail support is free for the entire warranty period and our extensive knowledge base is available 24/7. To help us keep you informed of new features and services, remember to register your product online at <http://register.wdc.com>.

### Accessing Online Support

Visit our product support website at <http://support.wdc.com> and choose from these topics:

- **Downloads** - Download drivers, software, and updates for your WD product.
- **Registration** - Register your WD product to get the latest updates and special offers.
- **Warranty & RMA Services** - Get Warranty, Product Replacement (RMA), RMA Status, and Data Recovery Information.
- **Knowledge Base** - Search by keyword, phrase, or answer ID.
- **Installation** - Get online installation help for your WD product or software.
- **WD Community** - Share your thoughts and connect with other users.

### Contacting WD Technical Support

When contacting WD for support, have your WD product serial number, system hardware, and system software versions available.

<b>North America</b>		<b>Europe (toll free)*</b>		00800 ASK4 WDEU
<b>English</b>	800.ASK.4WDC (800.275.4932)			(00800 27549338)
<b>Spanish</b>	800.832.4778	<b>Europe</b>		+31 880062100
		<b>Middle East</b>		+31 880062100
<b>Mexico</b>	001 8002754932	<b>Africa</b>		+31 880062100
<b>South America</b>		<b>Asia Pacific</b>		
Chile	1230 020 5871	Australia		1 800 42 9861
Venezuela	0800 100 2855	China		800 820 6682/+65 62430496
Peru	0800-54003	Hong Kong		+800 6008 6008
Uruguay	000 413 598 3787	India		1 800 200 5789
Argentina	0800 4440839	Indonesia		+803 852 9439
Brazil	0800 7704932	Japan		00 531 650442

# Table of Contents

WD® Service and Support . . . . .	2
Accessing Online Support 2	
Contacting WD Technical Support 2	
<hr/>	
<b>1 Important User Information . . . . .</b>	<b>1</b>
Important Safety Instructions . . . . .	1
Recording your WD Product Information . . . . .	2
Registering your WD Product . . . . .	2
<hr/>	
<b>2 Product Overview . . . . .</b>	<b>3</b>
Features. . . . .	3
Package Contents . . . . .	4
Accessories 5	
AC Power Adapters 5	
Views. . . . .	5
Front View 5	
Back Views 6	
Bottom (not shown) 8	
Requirements/Technical Specifications . . . . .	8
<hr/>	
<b>3 Getting Started . . . . .</b>	<b>9</b>
Using a Windows PC with Easy Setup . . . . .	9
Windows XP 9	
Windows Vista/Windows 7 9	
Choosing a Setup Option 10	
Setting Up a New Router (PC) 10	
Installing Additional WD Software 11	
Using a Mac Computer . . . . .	11
Installing the Router 11	
Accessing My Dashboard 12	
My Dashboard . . . . .	13
Dashboard Icons NEED ICONS WITHOUT BLACK BACKGROUND 13	
Opening the Dashboard. . . . .	14
<hr/>	
<b>4 Basic Settings and Tasks . . . . .</b>	<b>15</b>
Reviewing Current Settings . . . . .	15
Connecting to the Internet . . . . .	16
Configuring Wireless Settings . . . . .	17
Setting Up External Storage . . . . .	19
Adding a Device . . . . .	21

<b>5</b>	<b>Advanced Settings</b>	<b>23</b>
	Typical Advanced Screen	24
	WAN (Internet) Settings	25
	Screens	25
	Glossary	26
	Advanced Wireless Settings	27
	Screens	27
	Glossary	28
	LAN Settings <b>NEED NEW SCREEN SHOT</b>	<b>29</b>
	Screens	29
	Glossary	29
	Storage Settings	30
	Security Settings	31
	Screens	32
	Glossary	33
	Additional Features Settings	34
	Screens	34
	Glossary	35
	Administrative Settings	37
	Screens	37
	38	
	Glossary	38

<b>6</b>	<b>Performing Advanced Tasks</b>	<b>40</b>
	Enabling Guest Access	40
	Setting Up Parental Controls	41
	Register Your Router	41
	Managing Parental Controls	42
	Changing the Administrator's Password	44
	Upgrading the Router's Firmware	44
	Restoring the Router to Factory Defaults	45
	Rebooting the Router	46
	Using the Router as an Access Point?	46
	Setting up the DHCP Server on the My Net Router	46
	Configuring UPnP	47
	Enabling Port Forwarding	47

<b>7</b>	<b>Installing and Using WD Print Share . . . . .</b>	<b>49</b>
	Installing WD Print Share (Windows PC) . . . . .	49
	Using WD Print Share . . . . .	49
	Using an Auto-Connected Printer	49
	Using the Connect Button	50
	Using the Scan Button	50
<b>8</b>	<b>Troubleshooting . . . . .</b>	<b>51</b>
<b>9</b>	<b>Regulatory and Warranty Information. . . . .</b>	<b>52</b>
	Regulatory Compliance . . . . .	52
	Federal Communications Commission (FCC)	52
	Federal Communications Commission (FCC) Requirements, Part 15	52
	Regulatory Information/Disclaimers	52
	Industry Canada (IC)	53
	ICES-003/NMB-003 Statement	53
	Safety Compliance	53
	CE Compliance for Europe	54
	GNU General Public License (“GPL”) . . . . .	55
	Environmental Compliance (China)	55
	Russia FAC (DoC)	55
	Warranty Information (All Regions Except Australia/New Zealand) .	56
	Limited Warranty	56
	Obtaining Service	56
	Warranty Information (Australia/New Zealand only). . . . .	56
	Warranty	56
	Obtaining Service	57
<b>10</b>	<b>Index. . . . .</b>	<b>58</b>

## 1

# Important User Information

## Important Safety Instructions

This device is designed and manufactured to assure personal safety. Improper use can result in electric shock or fire hazard. The safeguards incorporated into this unit will protect you if you observe the following procedures for installation, use, and servicing.

- Read these instructions.
- Keep these instructions.
- Heed all warnings.
- Follow all instructions.
- Do not use this apparatus near water.
- Clean only with dry cloth.
- Do not block any ventilation openings. Install in accordance with the manufacturer's instructions.
- Do not install near any heat sources such as radiators, heat registers, stoves, or other apparatus (including amplifiers) that produce heat.
- Protect the power cord from being walked on or pinched particularly at plugs, convenience receptacles, and the point where they exit from the apparatus.
- Only use attachments/accessories specified by the manufacturer.
- Unplug this apparatus during lightning storms or when unused for long periods of time.
- Refer all servicing to qualified service personnel. Servicing is required when the apparatus has been damaged in any way, such as power-supply cord or plug is damaged, liquid has been spilled or objects have fallen into the apparatus, the apparatus has been exposed to rain or moisture, does not operate normally, or has been dropped.
- Carefully read and follow the Quick Install Guide and User Manual.
- Do not operate this device outside the temperature range of 5°C–35°C (41°F–95°F).
- Do not drop or shake the device.
- Do not move the device when it is powered on.
- Power supply cords should be routed so that they are not likely to be walked on or pinched by items placed upon them or against them.
- Do not overload wall outlets.

For additional safety information, refer to [www.wdc.com](http://www.wdc.com).

## Recording your WD Product Information

In the following table, write the serial and model numbers of your new WD product. You can find this information on the label on the bottom of the device. You should also note the date of purchase. This information may be required when requesting technical support.

Serial Number:
Model Number:
Purchase Date:
System and Software Notes:

## Registering your WD Product

Your WD product includes 30 days of free technical support during the applicable warranty period for your product. The 30-day period commences on the date of your first telephone contact with WD technical support. Register your WD product online at <http://register.wdc.com>.

## 2

## Product Overview

Thank you for purchasing a My Net™ router. This user manual provides step-by-step instructions for installing and using your new router. For the latest WD product information and news, visit our website at [www.wdc.com](http://www.wdc.com).

My Net N600 and the My Net N750 dual band routers look similar, have the same user interface, and work the same way, but differ in the following:

Characteristic	My Net N600	My Net N750
Wireless speed <sup>1</sup>	300 Mbps + 300 Mbps	300 Mbps + 450 Mbps
Wired speed	10/100 Fast Ethernet	10/100/1000 Gigabit Ethernet
USB ports	(1) USB 2.0	(2) USB 2.0

This chapter contains the following topics:

[Package Contents](#)

[Views](#)

[Requirements/Technical Specifications](#)

### Features

**Easy Setup** (Windows PCs only) – Run the Easy Setup installation software, plug in your router, connect your Wi-Fi™ devices, and you have created a wireless home network.

**Simultaneous dual band speed<sup>1</sup>** – Enjoy smooth, uninterrupted video streaming and online gaming.

- My Net N600 router provides simultaneous dual band 300Mbps + 300 Mbps speed
- My Net N750 router provides simultaneous dual band 300 Mbps + 450 Mbps speed

**Wired speed** – Connect up to four Ethernet-enabled devices for Fast wired speed within your network.

**Adds USB storage to your network** – Gives you the flexibility to add storage and share files within your network and to connect a printer and print from any computer within your network. My Net N600 has one USB 2.0 port and My Net N750 has two.

**DLNA/UPnP media server** – An external hard drive connected to a USB port on the My Net router can be used to stream photos, video, and music to your media client.

**Internet Security and Parental Controls** – Use this feature to block web sites or content based on your preferences.

**Guest access** – Set up guest access to allow others to use your Internet connection without joining your personal network. While guests will have access to the Internet, they will not have access to your personal files or local resources such as a printer.

---

1. Maximum wireless performance rate derived from IEEE standard 802.11 specifications. Actual data throughput and wireless coverage may vary based on wireless network capacity, data throughput rate, range and coverage. Performance depends on factors including distance from the access point, volume of network traffic, building materials and construction, operating system used, configuration of wireless products used, interference and other adverse conditions.



**WPS (Wi-Fi Protected Setup™) security** – Use the one-touch WPS button on your router to establish a secure connection between the My Net router and other WPS-enabled Wi-Fi devices such as printers and computers.

**Advanced settings** – Users who want to customize and have control over their router can use the Advanced Settings module on the My Dashboard user interface.

**Wall mountable** – In addition to its small footprint, My Net router is wall mountable, making it easy to integrate into your home network.

**Additional software** (Windows PCs Only) – You can install additional software from the product CD:

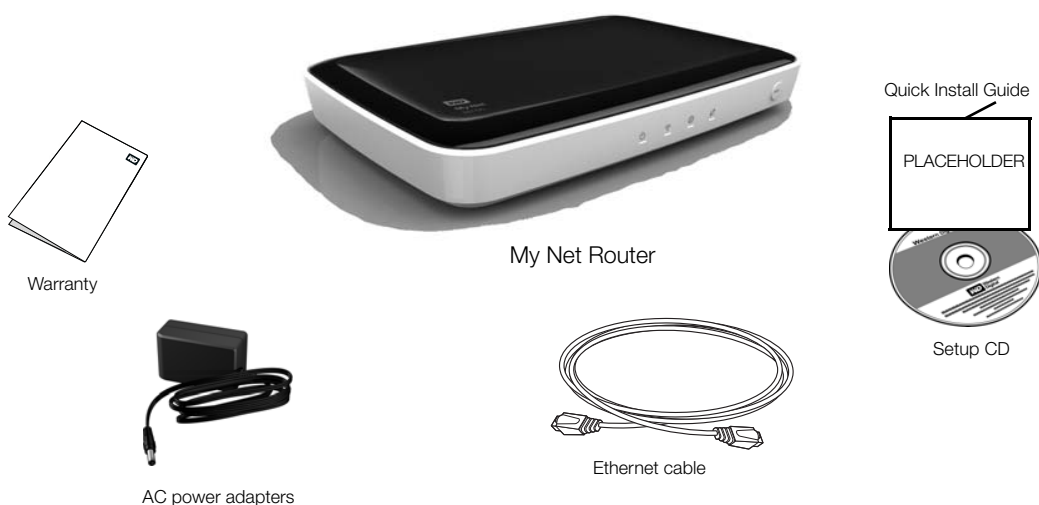
*Note:* **The following applications will support Mac computers in the near future.**

- **My Net View** diagnoses and detects any issue within the network and recommends ways to address the issue. WD Customer Service also uses this software to get necessary information to support customers with network issues.
- **WD Quick View** runs in the background in your PC computer and notifies you of important warnings or events on network. For example, it notifies you of new firmware availability, shows network attached storage status, and opens the router's My Dashboard user interface.
- **WD Print Share** enables users to share a printer connected to a USB port on the My Net router.

## Package Contents

In addition to your router, the package contains:

- Network (Ethernet) cable
- AC Power adapter
- Setup CD containing setup software (for Windows only), additional software, and product documentation
- Quick Install Guide on the CD cover
- Warranty information

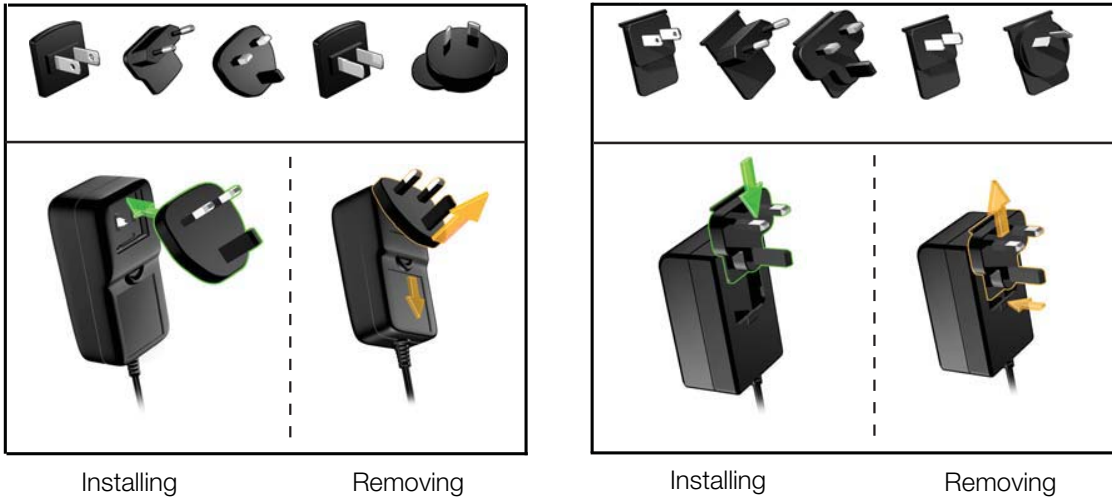


## Accessories

For U.S. residents, visit [www.shopwd.com](http://www.shopwd.com) to view additional accessories available for your My Net router. For users outside the U.S., visit <http://support.wdc.com>.

## AC Power Adapters

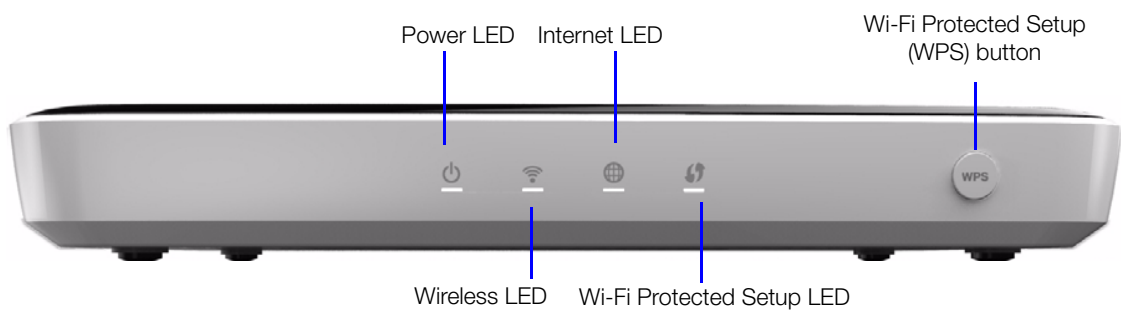
The AC power adapter varies, depending on your location. Some locations do not require a power plug clip. Units sold in those locations will have a fixed power plug. Refer to the illustrations below.



## Views

### Front View

The front of the My Net N600 and the front of My Net N750 Routers are identical.



## Front LED indicators

LED	Description
Power	Steady when a successful connection exists; flashes slowly during bootup, firmware upgrades, and system self-tests.
Wireless	Lit when wireless connection is active.
Internet	Lit when Internet connection is active.
Wi-Fi Protected Setup (WPS)	When connecting the router and a wireless device (e.g., a printer) that you want to add to the network, the LED indicates the status of WPS: <ul style="list-style-type: none"> <li>• When WPS is connecting a network device, the light blinks slowly.</li> <li>• If an error occurs during setup, the light blinks quickly.</li> <li>• After setup, light is solid when the connection is active.</li> </ul>

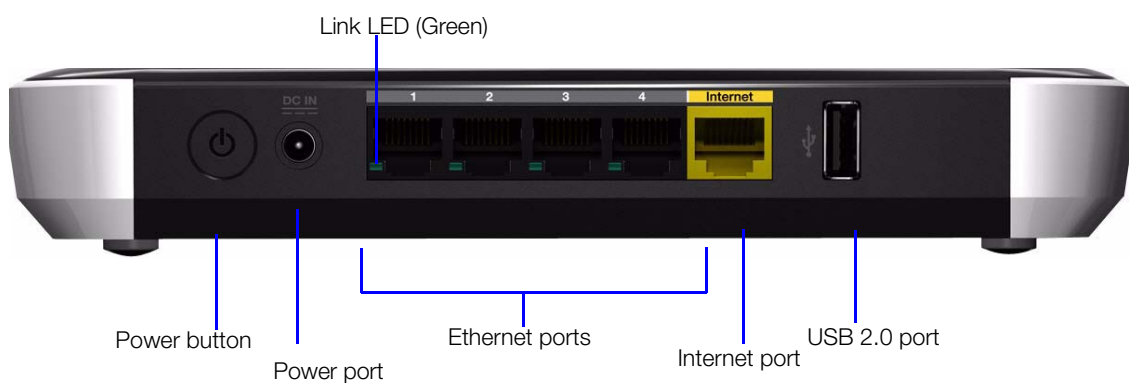
## Front button

Button	Description
WPS (Wi-Fi Protected Setup) button	Button enabling you to configure Wi-Fi security on WPS-enabled devices.

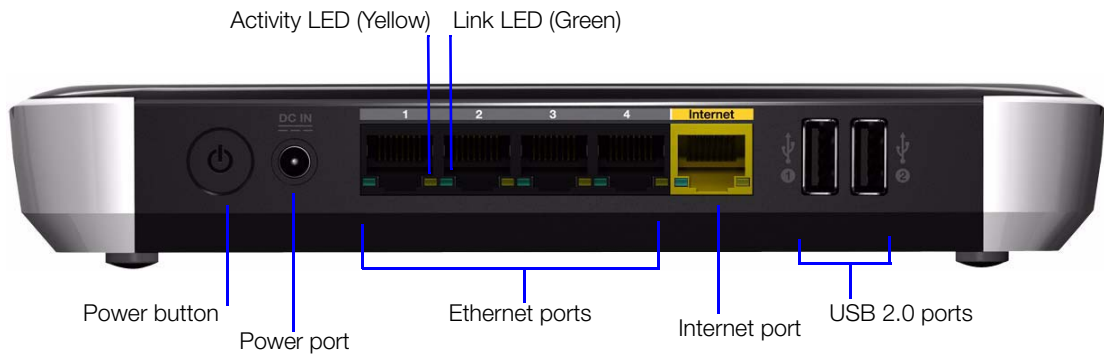
## Back Views

The backs of the My Net N600 and the My Net N750 router are the same except that the My Net N750 has two USB ports instead of one.

### Back view: My Net N600 router



### Back view: My Net N750 router



### Components

Component	Description
On/Off switch	Press to start the router. Press again to turn it off.
Power port	Use the included AC power adapter to connect this port to the power source.
4 Ethernet (LAN) ports	Use Ethernet (network) cables to connect wired network devices to these ports.
Internet (WAN) port (yellow)	Use an Ethernet (network) cable to connect this port to a modem.
USB port(s)	Connect storage devices such as the WD Passport or a printer to your network so you can share files and resources.

### My Net Router N600 LEDs

Component	LED	Description
4 Ethernet ports	Link LED (Green)	On when a cable connects the router's Ethernet port to another Ethernet port.

### My Net Router N750 LEDs

Component	LED	Description
4 Ethernet ports	Link LED (Green)	Steady on when a cable connects the port to another Ethernet port.
	Activity LED (Yellow)	Blinks to indicate network activity of that Ethernet port.
Internet port	Link LED (Green)	On when a cable connects the port to the modem.
	Activity LED (Yellow)	Blinks to indicate network activity on that port.

## Bottom (not shown)

Component	Description
Reset button	To reset your My Net router to factory defaults, press and hold the reset button with pointed object for at least 10 seconds. When the reset finishes, the Power LED blinks.

## Requirements/Technical Specifications

	My Net N600	My Net N750
Ethernet	10/100 Fast Ethernet	10/100/1000 Gigabit Ethernet
I/O ports	Ethernet (RJ-45) port	
USB ports	(1) USB 2.0	(2) USB 2.0
Supported clients	Windows XP with Service Pack 3	
	Windows Vista with Service Pack 2	
	Windows 7 with Service Pack 1	
	Mac OS X Leopard	
	Mac OS X Snow Leopard	
	Mac OS X Lion	
Physical dimensions	Length: 8.26" (209.7 mm)	
	Width: 5.44" (138.2 mm)	
	Height: 1.37" (35 mm)	
	Weight: My Net N600: 315g (0.315 Kg) My Net N750: 325g (0.325 Kg)	
Power supply	Input voltage: 100V to 240V AC	
	Input frequency: 50 to 60 Hz	
	Output voltage: 12V DC, 2A	
	Power supply: 24W	
Temperature	Operating temperature: 5 to 35 °C (41 to 95 °F)	
	Non-operating temperature: -20 to 65 °C (-4 to 149 °F)	

## 3

## Getting Started

This chapter contains the following topics:

- [Using a Windows PC with Easy Setup](#)
- [Using a Mac Computer](#)
- [My Dashboard](#)
- [Opening the Dashboard](#)

### Using a Windows PC with Easy Setup

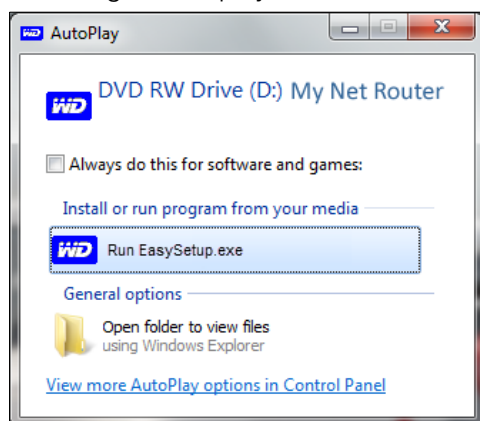
Use the Easy Setup application on the product CD to quickly and easily discover and install the router on the network, set up wireless, download additional software and access the router's My Dashboard user interface.

#### Windows XP

1. Insert the Setup CD into your computer's CD/DVD drive.
  - If AutoRun (AutoPlay) is enabled, the Choose your setup option screen displays.
  - If AutoRun (AutoPlay) is disabled, click **Start > My Computer** and locate the My Net router CD drive under Devices with Removable Storage. Double-click the CD, and then double-click **EasySetup.exe** to display the Choose your setup option screen.
2. Continue to "Choosing a Setup Option" on page 10.

#### Windows Vista/Windows 7

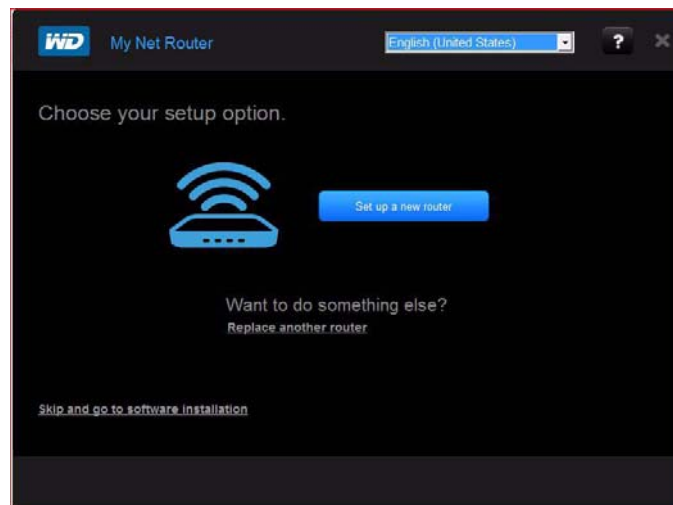
1. Insert the Setup CD into your computer's CD/DVD drive.
2. If a dialog box displays, click **Run EasySetup.exe**.



If a dialog box does not display, click **Start** or  **> Computer** and locate the My Net Router CD drive under **Devices with Removable Storage**. Double-click the CD, and then double-click **EasySetup.exe** to display the Choose your setup option screen. Continue to "Choosing a Setup Option" below.

## Choosing a Setup Option

Use this screen to set up a new router and install other WD software. **NEED NEW SCREEN**



## Setting Up a New Router (PC)

The Easy Setup wizard shows how to install the router in your home network, checks your connections, and prompts you to set up security.

1. On the Choose your setup option screen, click **Set up a new router**. A screen showing a correctly connected router displays.

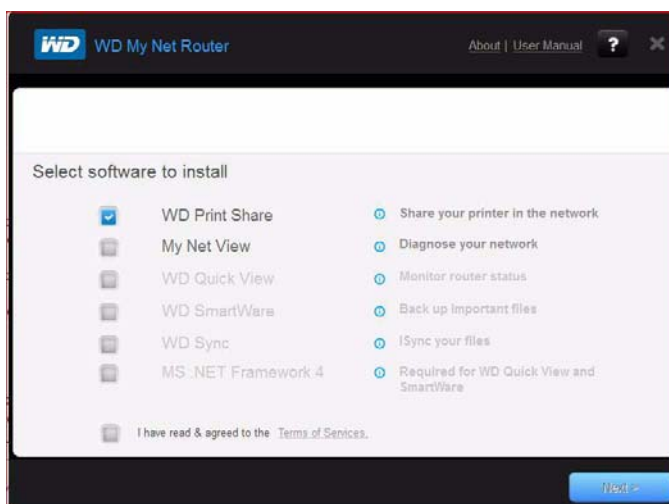


2. Confirm that your router is connected properly and click **Confirm**
3. . (For more detailed connection instructions, see “Installing the Router” on page 11).
4. Follow the instructions in the Easy Setup wizard. On the final screen (Setup Complete), you have two options:
  - To leave the setup application, click **Quit**. You can now use the router without further configuration.
  - To view the router settings and configure them to meet your needs, click the **View My Settings** link. The My Dashboard home screen appears. Continue with “My Dashboard” on page 13.

## Installing Additional WD Software

Use Easy Setup to install additional WD software. The software applications available depend on the My Net Router model. Unavailable applications are grayed out.

1. Start Easy Setup as described in “Using a Windows PC with Easy Setup” on page 9.
2. On the Choose your setup option screen, click **Skip and go to software installation**. A list of available software applications displays:



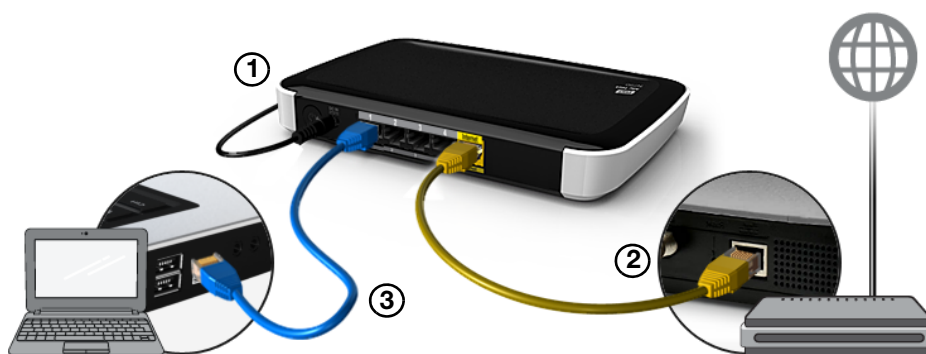
3. Click the check boxes for the software you want and click **Next**.

**Note:** For information about WD Print Share, see “Installing and Using WD Print Share” on page 49. For more information about My Net View, see ????

## Using a Mac Computer

To get started with a router, physically connect the router as described in “Installing the Router” below, and use an Internet browser to access the router’s My Dashboard user interface to configure settings.

### Installing the Router



1. Connect the power cable to the router’s DC connector and plug the opposite end into an AC power outlet.



2. Connect one end of the included yellow Internet (Ethernet) cable to the router's Internet port and the other end to the modem.

*Note:* One Ethernet (network) cable is included in the product package. You can purchase additional cables from the WD Store or another source.

3. Do one of the following:
  - Using Ethernet cables, connect network devices or computers to the router's unused Ethernet ports.
  - If you do not have another Ethernet cable, use a wireless connection to set up the router. Make sure your Mac computer's Wi-Fi is turned on, and select the network **WesternDigital** from the list of wireless networks (**WHERE is the list? Screen shot?**) and connect. **By default there is no password?**
4. Press the **On/Off** button on the back of the router once to turn it on. The four LEDs on the front the router light up one by one as it boots up. **SHOULDN'T YOU HAVE DONE THIS EARLIER, AT LEAST FOR A WIRELESS CONNECTION?**
5. Go to the next section, Accessing My Dashboard, to configure your router's settings.

## Accessing My Dashboard

Mac users access My Dashboard to configure all router settings.

*Note:* You can set up the router using a Windows PC the same way, though you will not be able to take advantage of Easy Setup features such as setting up a wireless connection or security.

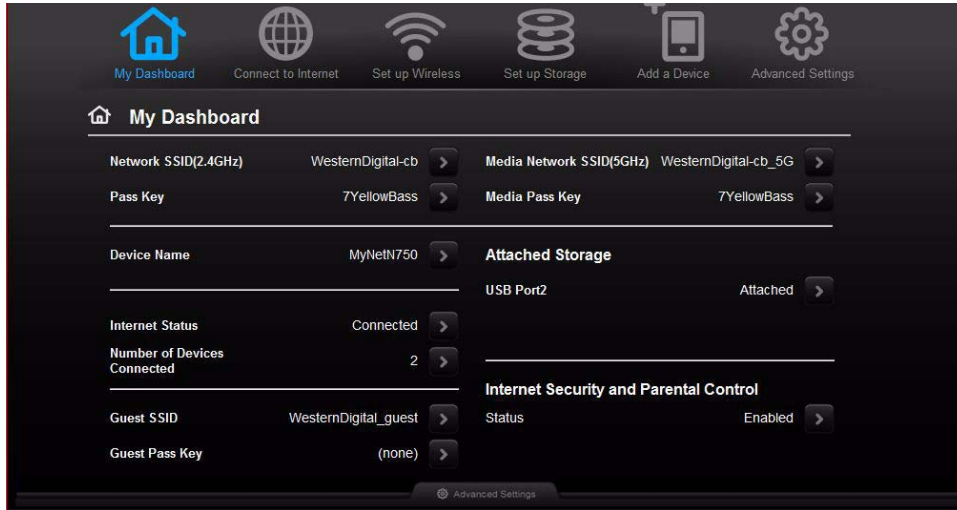
1. Open a browser. (See requirements "Requirements/Technical Specifications" on page 8.)
2. In the address field, type **http://192.168.1.1** or **http://WDRouter**. The Welcome screen displays:



3. **Type password in the Password field OR LEAVE IT BLANK?** and click **Submit**. The My Dashboard home screen displays. At this point, you can configure basic settings such as wireless security, password, storage, and the Internet connection. Continue with "My Dashboard" on page 13.






## My Dashboard



The My Dashboard home page is a simple snapshot of the router configuration with the most essential information in one screen. It includes summary information for wireless settings, Internet status, guest network, parental control, and attached hard drive(s).



### Dashboard Icons **NEED ICONS WITHOUT BLACK BACKGROUND**

The icons at the top of the screen open modules and wizards for performing important tasks. The red **Alert** icon at the upper right of the screen displays notices concerning the router.

Icon	Name	Actions	See ...
	My Dashboard	Review and change current settings.	"Basic Settings and Tasks" on page 15
	Connect to Internet	Connect the router to the Internet and follow the wizard through the process of setting up the Internet connection.	"Connecting to the Internet" on page 16
	Set up Wireless	Configure wireless settings such as network name and security.	"Configuring Wireless Settings" on page 17
	Set up Storage	Follow the wizard guiding you through setting up a storage device connected to the USB port of the router.	"Setting Up External Storage" on page 19
	Add a Device	Add a wireless device and configure its security settings.	"Adding a Device" on page 21

Icon	Name	Actions	See ...
	Advanced Settings	Configure advanced settings for Internet connections, wireless connections, storage, devices, system administration, security, and the LAN.	“Advanced Settings” on page 23
	Alert	Click to display recent alerts about new firmware and network issues and shortcuts to important settings such as guest wireless access.	

## Opening the Dashboard

To open the My Net Router after its initial configuration, enter **http://** followed by its IP address or name in the address field of your browser.

## 4

## Basic Settings and Tasks

This chapter contains the following topics:

- [Reviewing Current Settings](#)
- [Connecting to the Internet](#)
- [Configuring Wireless Settings](#)
- [Setting Up External Storage](#)
- [Adding a Device](#)

### Reviewing Current Settings

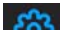


1. Review the following settings on the My Dashboard home page. If you used Easy Setup, you may have changed the settings from the defaults already. If not, you can change them here.

Setting	Description
Attached Storage	Status of a storage device connected to the router's USB port.
Device Name	Name assigned to the router.
Guest Pass Key	Guest network password.
Guest SSID	To provide guests with limited access to the Internet and resources such as printers on your local network, you can create a guest network. The guest network is enabled by default.
Internet Security and Parental Control status	If status is Enabled, this feature controls access to the Internet by restricting dangerous or undesirable web access. Disabled by default. See "Setting Up Parental Controls" on page 41.
Internet Status	Router is Connected to or Disconnected from the Internet.

Setting	Description
Media Network SSID (5 GHz)	Identifier of the 5 GHz network. This network is generally used for media and smart devices because it minimizes interference that might interrupt media streaming.
Media Pass Key	Password for the 5 GHz network
Network SSID (2.4 GHz)	Unique identifier of the 2.4 GHz network.
Number of Devices Connected	Number of devices connected to the router.
Pass Key	Password for accessing the 2.4 GHz network.

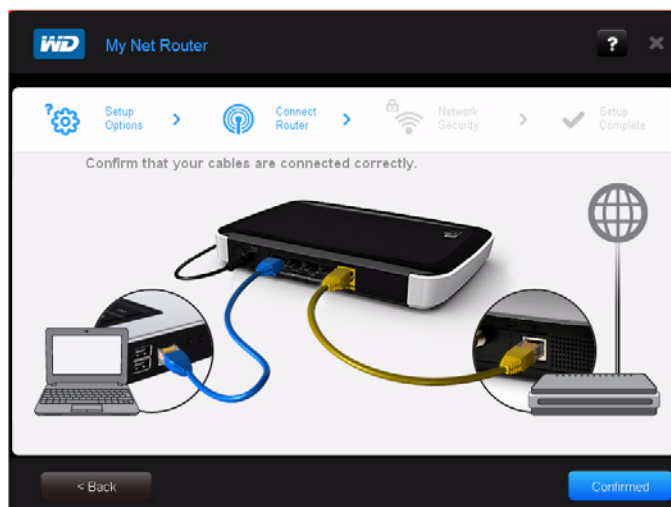
- To change a setting, click the arrow to its right to display a screen on which you can make the change.

*Note:* Another way to change these screens is to click the **Advanced Settings** icon at the top of the screen .

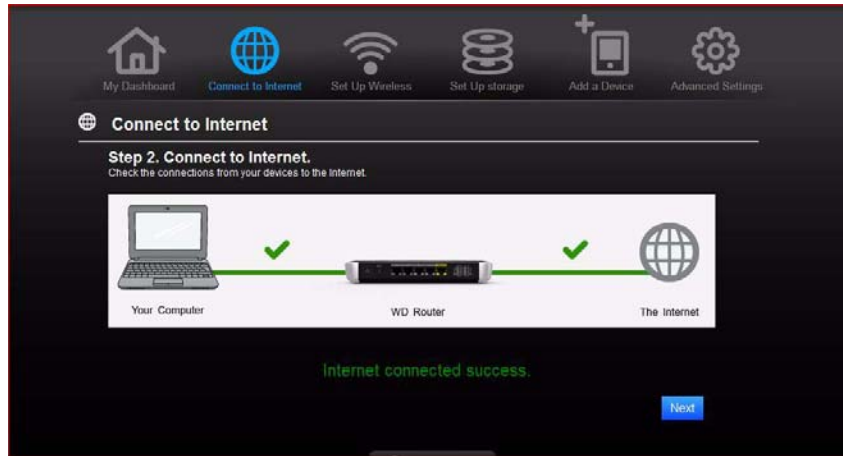
## Connecting to the Internet

To check or troubleshoot your Internet connection:

- Click the **Connect to Internet** icon to display a diagram showing you how to connect the router cables. **GET NEW DIAGRAM FROM DAN??**



2. Click **Next**. A screen displays the status of the connections: from the computer to the router and from the router to the Internet. [GET NEW DIAGRAM](#)



3. When a connection succeeds, a check mark displays above it.
  - a. Click **Next** to display the Congratulations screen.
  - b. Click **Next** to display the My Dashboard home page again.
4. If the connection to the Internet fails:
  - a. Click **Next** and enter your Internet service provider account **PPPoE Username** and **Password**.
  - b. Click **Next** to display the My Dashboard home page again.

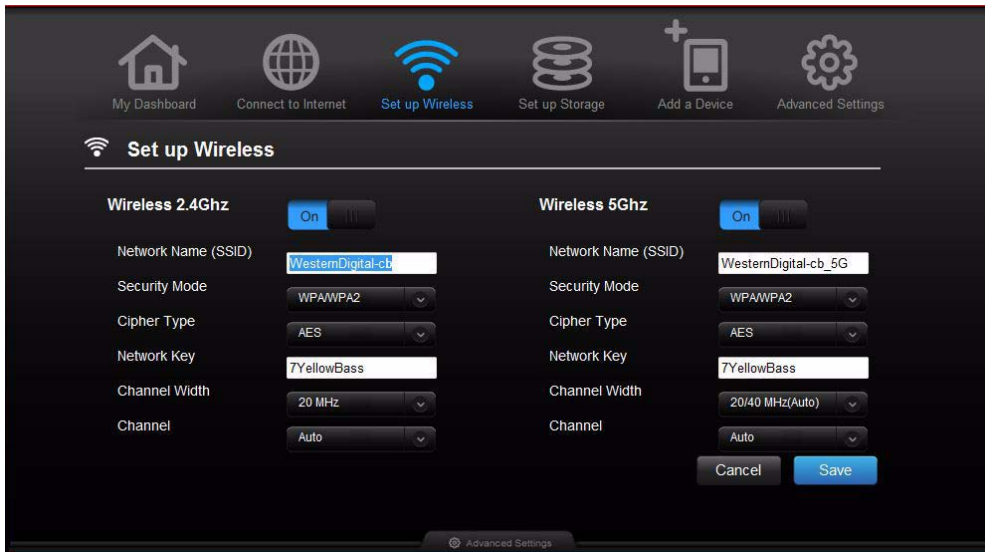
## Configuring Wireless Settings

Once you configure wireless settings on the router, you can easily connect wireless devices such as notebooks, laptops, tablets, PDAs, or smart phones to the Internet and to other devices on the network.



To configure basic wireless settings:

1. Click the **Set Up Wireless** icon at the top of the page. The Set Up Wireless screen displays.



2. View or modify the required wireless settings for the Wireless 2.4 GHz and Wireless 5 GHz bands:

*Note:* You can change some settings on this screen. See “Advanced Wireless Settings” on page 27 for additional wireless settings.

Setting	Description
ON/OFF	Wireless service is enabled by default. To disable, toggle to the <b>OFF</b> setting.
Network Name (SSID)	Name given to the wireless band.
Security Mode	Type of security being applied to the wireless band. The default is WPA/WPA2.  WPA (Wi-Fi Protected Access) and WPA2 are security protocols that use a dynamically changing key. WPA2 is the second generation protocol that uses stronger AES (Advanced Encryption Standard) encryption. The third option is None.
Network Key	Password for accessing the wireless band.
Channel Width	The default setting is 20/40 MHz (Auto), which is recommended unless you are having connectivity issues. The other option is 20 MHz.
Channel	Accept the default (Auto) or select a channel from the drop-down list.

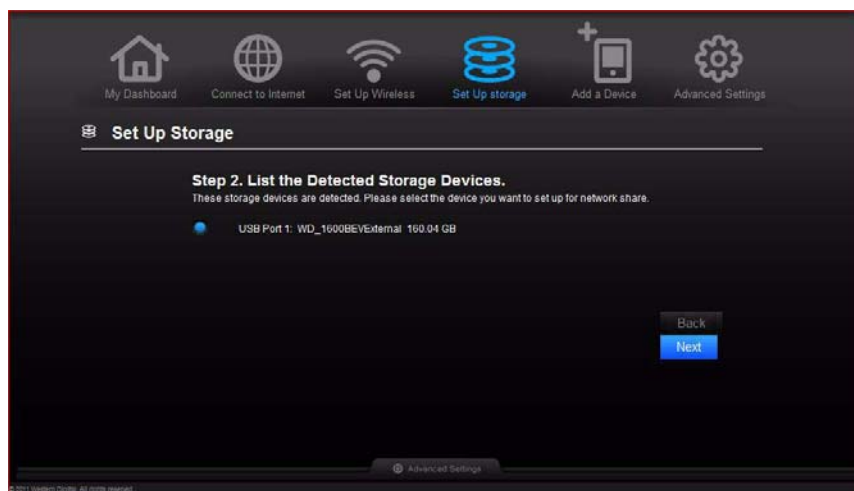
## Setting Up External Storage

You can modify storage settings such as network shares for storage device(s) attached to the router.

1. If you are setting up an attached storage device, make sure it is properly connected to the router's USB port.
2. Click the **Set Up Storage** icon to display the first screen of the storage wizard. **GRAPHIC**



3. Click **Next** to display a list of connected storage devices.





4. Click **Next** to display Step 3 of the wizard.

**Set up Storage**

**Step 3. Share function for storage.**  
Select the share function for storage and setup the account and password.

Storage	Share	DLNA	iTunes	FTP
USB2	<input checked="" type="checkbox"/>	<input type="checkbox"/>	<input type="checkbox"/>	<input type="checkbox"/>

**Create/Change User Account**

Username:

Password:

5. In the table, select the check box for the **Share** function of the storage.???DOES THIS MAKE SENSE?
6. Create or change your user account by entering your user name and password for accessing the share.
7. Click **Next** to display the Setup Complete screen.

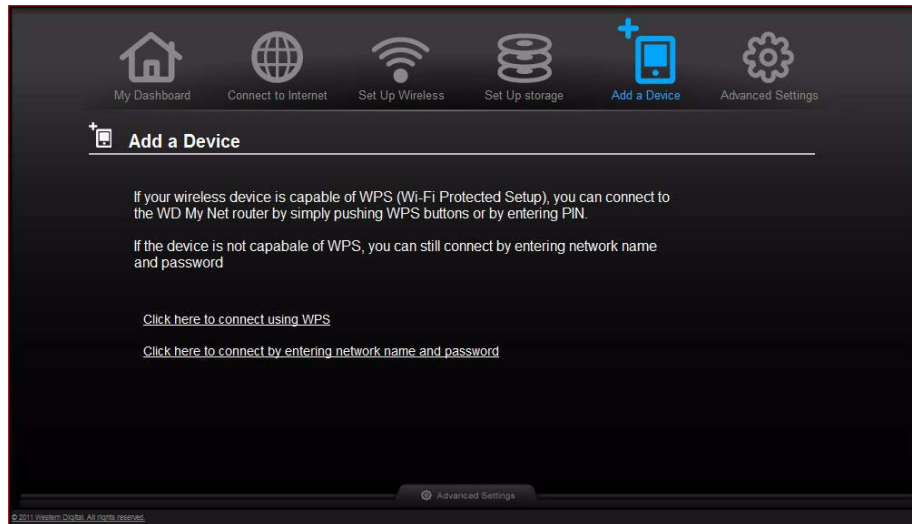
**Set up Storage**

**Step 4. Setup Complete.**  
You have finished basic setup of attached storage for use in the network.  
To change other options of the shared drive, please go to the USB Attached Storage section of the Advanced Settings.

8. Click **Finish**. The My Dashboard home screen appears.

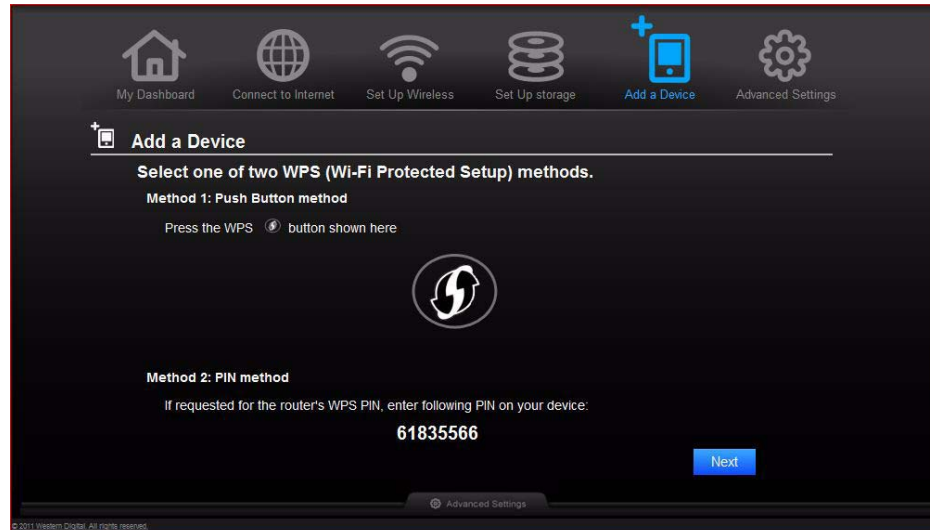
## Adding a Device

To connect a WPS-enabled wireless device, push the WPS button on the front of the router or enter a PIN on the device's Wi-Fi connection page. If the device is not capable of WPS, you can still connect to the router using a network name and password.



### To connect a WPS-enabled device:

1. Click the **Click here to connect using WPS** link to display the screen shown below:



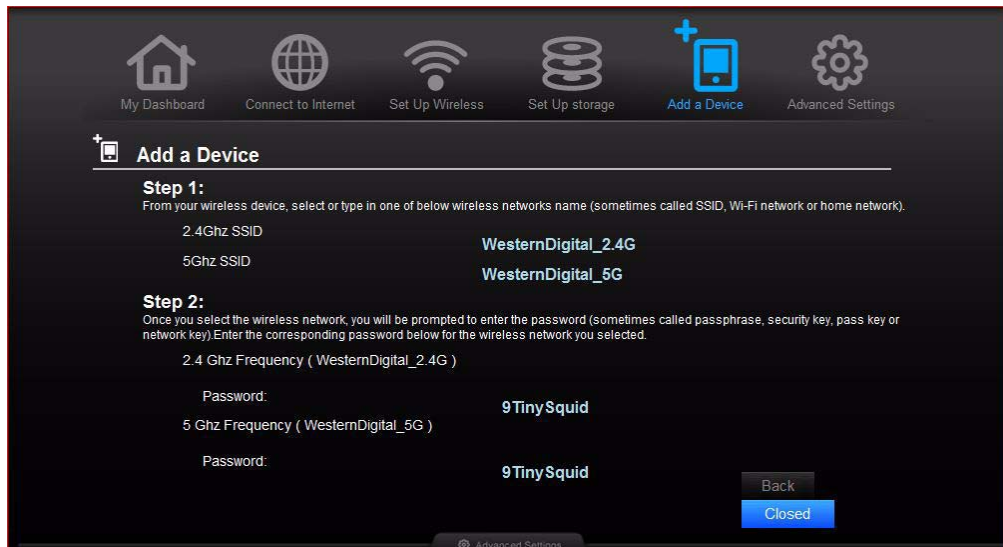
2. Select one of the two WPS methods:
  - a. To use Method 1, press the **WPS** button on the front of the router or click the virtual button on this screen. On your wireless device, press the physical or click the virtual **WPS** button.
  - b. To use Method 2, if prompted by your wireless device, enter the router's WPS PIN shown on the screen into your wireless device.

*Note:* You can change the PIN on the Advanced Wireless / Wi-Fi Protected screen. See "Advanced Wireless Settings" on page 27.

3. Click **Next**.

**To connect a device that is not WPS enabled:**

1. On the Add a Device screen, click the **Click here to connect by entering network name and password** link.



2. Using the values shown on the screen, enter the following into your wireless device's Wi-Fi connection screen as prompted:
  - The Wi-Fi network SSID for the wireless band you want to use.
  - The password for the wireless network you selected.
3. Save the values in your device and on the router screen.
4. Click **Close**.

## 5

## Advanced Settings

The **Advanced Settings** icon leads you to additional screens and icons for entering detailed settings for the basic functions discussed in the previous chapter and more.

*Note:* Another way to access Advanced Settings screens is to click the arrow to the right of the setting on the basic screen. When a “basic” icon has a small Advanced Settings icon to its upper left, you are configuring that function’s advanced settings. For example, the icon for Internet Settings looks like this:



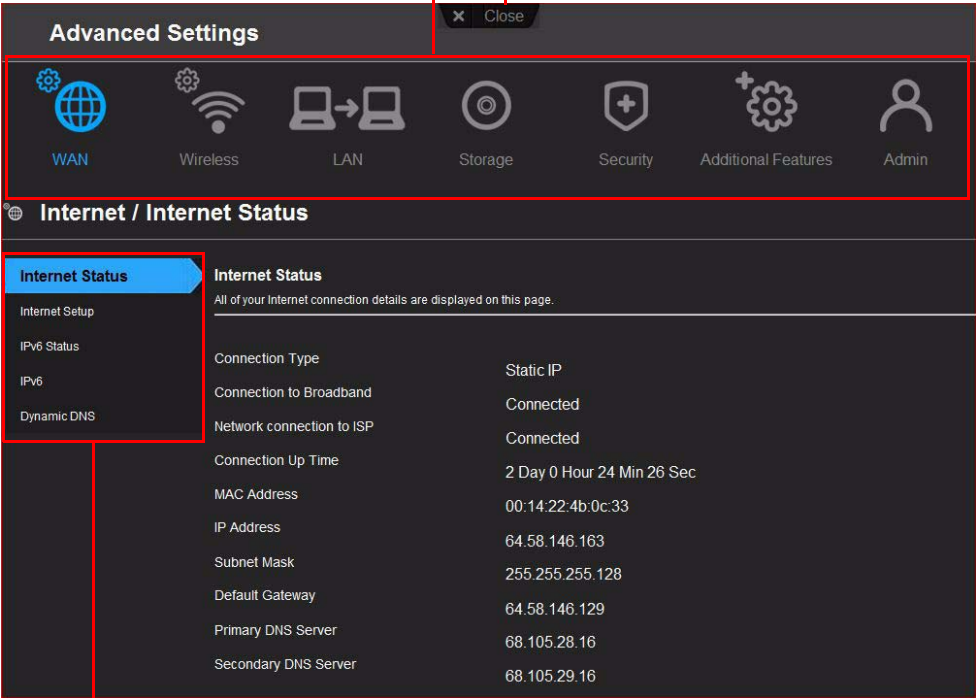
Following is an overview of the activities you can perform using the Advanced Settings screens and a glossary of the terms you will encounter on the screens.

This chapter contains the following topics:

- [Typical Advanced Screen](#)
- [WAN \(Internet\) Settings](#)
- [Advanced Wireless Settings](#)
- [LAN Settings](#) NEED NEW SCREEN SHOT
- [Storage Settings](#)
- [Security Settings](#)
- [Additional Features Settings](#)
- [Administrative Settings](#)

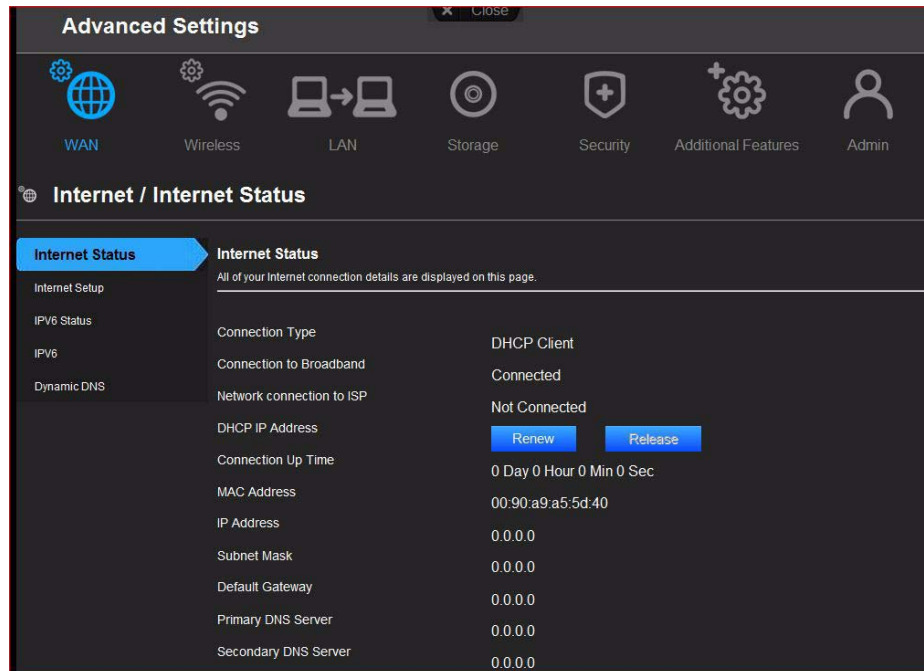
# Typical Advanced Screen

Advanced icons      Close button



Tabs

## WAN (Internet) Settings



### Screens

**Internet Status** – View current Internet connection details. Allows you to renew or release DHCP IP Address.

#### **Internet Setup** –

Configure your Internet connection type.

**IPv6 Status** – View all Internet and network connection details related to the IPv6 Internet protocol.

**IPv6** – Configure the IPv6 connection type and internal network settings of your router.

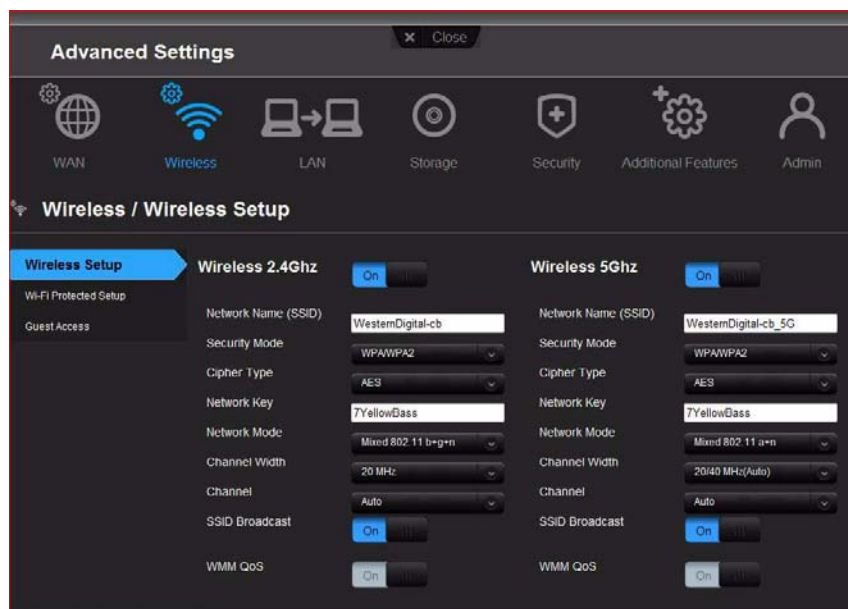
**Dynamic DNS (DDNS)** – Host a server (for example, Web, FTP, Game Server) using a domain name purchased with your dynamically assigned IP address from a DDNS service provider. This enables others using a DDNS service provider to enter your host name to connect to your server even if your IP address changes.

## Glossary

Setting	Description
Connection to Broadband	Indicates whether the router is connected to broadband (high speed Internet) service.
Connection Type	Can be Static or Dynamic IP (DHCP), PPPoE (Username / Password), and PPTP (Username / Password).
Connection Up Time	Days, hours, minutes, and seconds the connection has been steady.
Default Gateway	The IP address of the device which your router is connected to.
DHCP (Dynamic Host Configuration Protocol) IP Address	IP address automatically assigned by your Internet Service Provider (ISP). This IP address may change periodically or each time your router is disconnected and reconnected to the ISP.
DNS (Domain Name Service) Server	System that translates text host names into numeric IP addresses used to uniquely identify any device connected to the Internet.
Dynamic DNS (DDNS)	Status of the Dynamic Domain Name System, a system that keeps a domain name linked to a changing IP address.
Dynamic DNS Status	Status of whether you router can successfully connect and update your IP address to the DDNS service.
Host name	The host name you configured/purchased from your DDNS service provider. <b>WHAT IS THE HOST? YOUR COMPUTER?</b>
IP Address	The WAN/Internet IP address assigned to your router by the ISP.
IPv6 Connection Type	Click to select Static IPv6, Auto (SLAAC/DHCPv6), PPPoE or Link-local Only connection used to connect to your ISP. Check with your ISP for this information.
IPv6 Default Gateway	The IPv6 address of the <b>device</b> that your router is connected to.
LAN IPv6 Computers	Computers connected to your local network with an IPv6 address.
LAN IPv6 Link-Local Address	<b>The LAN link-local IPv6 address of your router.????</b>
MAC Address	Unique identifier that the manufacturer assigns to a device.
MTU (Maximum Transmission Unit)	Size (in bytes) of the largest protocol data unit that can be transmitted over the network.
Network connection to ISP	Indicates whether the router is connected to an Internet Service Provider.
Password (Key)	Password required for accessing the network.

Setting	Description
Primary DNS Server	The primary DNS Server address is configured and maintained by your ISP. Check with your ISP for this information.
Secondary DNS Server	The secondary DNS Server address is configured and maintained by your ISP. Check with your ISP for this information.
Subnet Mask	Tells your computer or router which IP addresses are local to your network and which are remote. The subnet mask tells your router where data is coming from and to which computer data should go.
Username (Email)	Username (Email) required to access your DDNS account.

## Advanced Wireless Settings



### Screens

**Wireless Setup** – Change wireless settings and turn SSID Broadcast and WMM QoS on or off.

**Wi-Fi Protected Setup** – Add a new wireless device into this network using the WPS push button or PIN; generate a new PIN or set it to the default value.

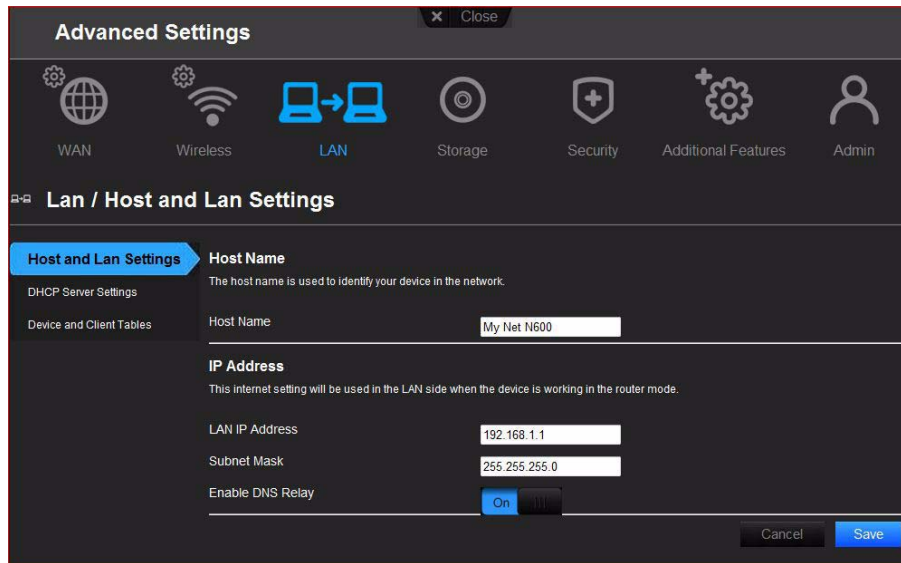
**Guest Access** – Allow visitors access to the 2.4 GHz and 5 GHz wireless bands. **CAN YOU ACCESS PRINTERS AS A GUEST?**



## Glossary

Setting	Description
Channel	Accept the default (Auto) or select a channel from the drop-down list.
Channel Width	The default setting is 20/40 MHz (Auto), which is recommended unless you are having connectivity issues. The other option is 20 MHz.
Guest Access Security Mode	Options include WPA Personal, WPA2 Personal, WPA/WPA2 Personal, and None. Default is None.
Guest Network SSID	The default guest network name displays.
Network Key	Password for accessing the wireless band.
Network Mode	<p>For the 2.4GHz band, the default network mode is Mixed 802.11 b+g+n. Keep this setting for maximum client compatibility. The other network modes are 802.11b only, 802.11g only, 802.11n only, Mixed 802.11 b+g and Mixed 802.11 g+n.</p> <p>For the 5GHz band, the default network mode is Mixed 802.11 a+n. Keep this setting for maximum client compatibility. The other network modes are 802.11a only and 802.11n only.</p>
Network Name	Name given to the wireless band.
Router/Access Point PIN Code	Automatically or manually generated private identification number for accessing the wireless device on the wireless network.
Security Mode	Options include: WPA2, WPA, WPA/WPA2 (default), WPA-Enterprise, WPA2-Enterprise, and WPA/WPA2-Enterprise
SSID Broadcast	Your wireless clients identify and connect to your router with the network name or SSID (Service Set Identifier). The SSID broadcast is ON by default. For additional security, you can turn SSID broadcast to OFF.
WMM QoS	WMM (Wi-Fi Multimedia) is a standard that defines quality of service (QoS) in Wi-Fi networks, prioritizes capability, and optimizes performance when multiple applications compete for network resources.

## LAN Settings **NEED NEW SCREEN SHOT**



### Screens

**Host and Lan Settings** – View and change host name, IP address, and LAN IP address, and enable DNS (Domain Name System) relay.

**DHCP Server Settings** – Enable or disable DHCP server, which provides the IP address to the LAN-side computers dynamically, when your router is working in router mode

**Device and Client Tables** – View the DHCP client table of wired and wireless devices. Manually add a device to the table.

### Glossary

Setting	Description
Device name	Name assigned to a computer or device on the network.
DHCP Client Table	Table of DHCP wired and wireless clients on the network.
DHCP IP Address Range	Range of IP addresses that can be assigned by the DHCP server.
DHCP Lease Time	Amount of time the device or computer leases the DHCP address for. If the client does not renew the lease before it expires, the IP address is returned to the pool for other clients.
DHCP Server	Provides an IP address to the LAN-side computers dynamically, when your router is working in router mode.
Enable DNS Relay	LAN-side clients use the router to relay DNS queries to the Internet.
Host name	Name identifying the router on the network.

Setting	Description
IP Address	IP address settings of the LAN.
LAN IP address	IP address of the router on the network (when router is in router mode).
Local Domain Name	You can append a local domain name to your (THE <b>ROUTER'S?</b> ) client's ( <b>clients'?</b> ) to avoid entering the complete address of commonly used Internet domains. For example, when setting the local domain name wdc.com, entering store in a client's web browser results in a request for store.wdc.com.
MAC Address	Unique identifier that the manufacturer assigns to a device.
Subnet Mask	The subnet mask is used to control how many subnetworks can exist in your local network. The more subnetworks there are, the fewer the hosts you can have per subnet.

## Storage Settings

The Advanced Set Up Storage screen is the same as the Basic Step 3 Storage screen. See “Setting Up External Storage” on page 19.



# Security Settings

**Advanced Settings** Close

WAN Wireless LAN Storage **Security** Additional Features Admin

**Security / Firewall**

**Firewall** Firewall

DMZ You can setup the firewall of this device in this page. The firewall rules allow you to block specific incoming or outgoing traffic by IP address or ports.

MAC Filter

Parental Controls

**Create Firewall Rules**  
Remaining number of rules that can be created: 32

Cancel Save

<input type="checkbox"/>	Name <input type="text"/>	Source Source	Source IP Range <input type="text"/>	Protocol All
	Action Allow	Destination Destination	Destination IP Range <input type="text"/>	Port Range <input type="text"/>
<input type="checkbox"/>	Name <input type="text"/>	Source Source	Source IP Range <input type="text"/>	Protocol All

## Screens

**Firewall** – Set up a firewall for this router to block specific incoming or outgoing traffic by the IP address and/or ports.

**DMZ** – Set up a DMZ (Demilitarized Zone) to allow computers behind the router firewall to be accessible to Internet traffic. Typically, your DMZ would contain Web servers and FTP servers.

You can set up a single computer on your network outside of the router. If you have a computer that cannot run Internet applications successfully from behind the router, you can place the computer into the DMZ for unrestricted Internet access. Because of security concerns, use this option only as a last resort.

**MAC Filter** – Control network access based on the MAC address of the client device. The MAC address is a unique ID assigned by the manufacturer.

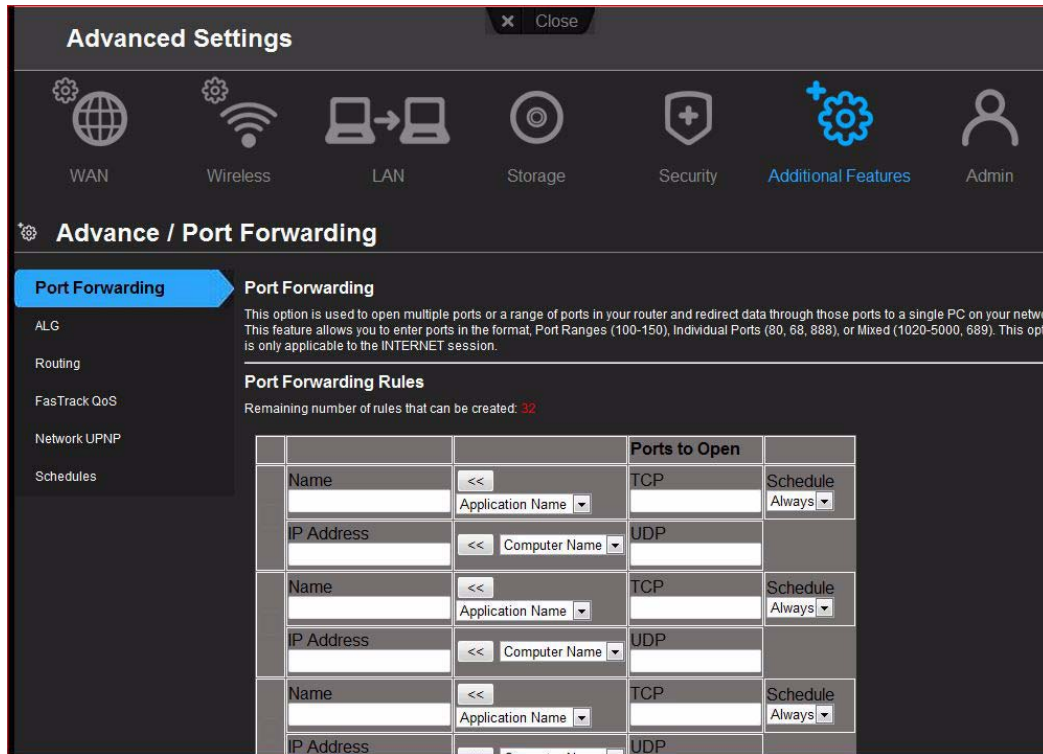
**Parental Controls** – Control Internet access to specific websites and access periods. See “Setting Up Parental Controls” on page 41.

## Glossary

Setting	Description
Action	Set to Allow or Deny traffic matching the IP address and/or ports configured.
Active	Status of MAC filtering.
Computer Name	Name assigned to the computer for easier identification. Select the computer name to set it for DMZ access.
Destination	Destination IP Address on the local network (LAN) or Internet (WAN).
Destination IP Range	Range of IP addresses where the traffic is sent.
Device location	From the drop-down list, select the region where the router is located: <ul style="list-style-type: none"> <li>• USA</li> <li>• EMEA (Europe, Middle East, Africa)</li> <li>• APAC (Asia Pacific)</li> </ul>
Device name	Name assigned to the computer or device on the network.
DHCP Client List	Computers and devices that are currently connected to your router.
DMZ IP Address	If DMZ is enabled, select the IP address of the computer in the DMZ.
Enable DMZ	Toggle the button to On to enable DMZ.
Gateway	Combined hardware and software that connect two or more networks, converting protocols as necessary.
<b>Interface</b>	
MAC Address	Unique identifier that the manufacturer assigns to a device.
MAC Filtering Rules	From the drop-down list, select the rule to apply to the filter, which should allow or deny network/Internet access.
<b>Name</b>	Name to identify the firewall rule.
Netmask	Internet protocol that filters certain values to distinguish between the subnetwork address and the host address so a router forwards packets correctly in a network.
Port Range	Network traffic port range that will be applied in the firewall rule.
Protocol	Protocol that will be applied in the firewall rule. Available options are All, TCP, UDP and ICMP???.
Schedule	?
Source	Source IP Address on the local network (LAN) or Internet (WAN).
Source IP Range	Range of IP addresses where the traffic is initiated.

**NEED NEW SCREEN SHOT**

## Additional Features Settings



### Screens

**Port Forwarding** – Open multiple ports or a range of ports in your router and redirect data through those ports to a single computer on your network. Applies only to an Internet session.

**ALG** – Enable or disable Application Level Gateway (ALG) configuration. **WHAT IS THIS?**

**Routing** – Defines static routes to specific destinations.

**FasTrack QoS** – Configure QoS Engine powered by QoS Engine technology. This engine improves your media applications and online game experience by prioritizing your game traffic over other network traffic, such as Web traffic. Use QoS rules to set the priority of your applications.

**Network UPnP** – Enables or disables peer-to-peer Plug and Play functionality for network devices.

## Glossary

Setting	Description
<b>Port Forwarding Rules</b>	
Application Name	From the drop-down list, select the application whose data you want to forward to the client on your local network.
Computer Name	IP address of the device on your local network the rule will apply to.
Enabled	Select to enable the port forwarding rule. Clear the check box to disable.
IP Address	Populated by your selection from the <b>Computer Name</b> drop-down list.
IPSec (VPN)	Turn ON (default) IPSec ALG if you use a IPSec client to dial into your corporate network via the Internet.
Name	Select an application from the drop-down list or enter a name for a custom application.
PPTP (Point-to-Point Tunneling Protocol)	Turn ON (default) PPTP ALG if you use a PPTP client to dial into your corporate network via the Internet.
SIP (Session Initiation Protocol)	A signaling protocol for Internet Telephony. Turn ON (default) SIP ALG if you use VoIP telephone service over your Internet connection.
External Port	Enter the port(s) you want to forward from the WAN interface (Internet). The port is automatically populated if you pick an application from the drop-down list.
Internal Port	Enter the port(s) you want to forward to on the LAN client. The port is automatically populated if you pick an application from the drop-down list.
Protocol	Select the protocol that you wish to port forward. The options are All, TCP, and UDP. The protocol will be automatically be selected if you pick an application from the drop-down list.
<b>Routing</b>	
Active	Select the check box to enable the routing entry.
Destination IP	IP address/network to which the data is sent.
Gateway	Enter the Gateway IP address through which this router can be reached. The Gateway IP should be reachable from your router.
Name	Enter a name for the routing entry.
Netmask	Enter a Netmask for the Destination IP to define the destination network.
<b>FasTrack QoS</b>	
Enable QoS	Enable or disable the QoS application to prioritize different client applications/traffic types over the Internet.



Setting	Description
QoS (Quality of Service) Settings	Enable or disable the QoS (Quality of Service) application to prioritize different client applications/traffic types over the Internet. QoS is the standard defining quality of service in Wi-Fi networks.
<b>QoS Setup</b>	
Uplink Speed	The uplink speed (in Kbps) at which data can be transferred from the router to your ISP. The Auto (default) setting can automatically detect the uplink speed, or you can select other values from the drop-down list or enter your own. QoS prioritizes all Internet traffic based on this setting.
FasTrack	Click <b>Restore Default</b> to display the default names and priorities.
<b>Classification Rules</b>	
Delete icon	Click to delete the row.
Detail	For <b>Device</b> rules, specify the LAN, Remote IP addresses, and protocol for the rule.  For <b>Application</b> rules, specify the Start and End ports as well as the protocol for the rule.  The protocols available are TCP, UDP, and Both.
Name	Name given to the service/client for the classification entry.
Priority	Priority in which your applications can send and receive data over the network.
Type	Specify whether the rule applies to a device or an application?
<b>Network UPnP</b>	
Enable UPnP IGD	Enables or disables peer-to-peer Plug and Play functionality for network devices.

## Administrative Settings

**Admin / Administrator**

**Administrator**

Time Settings

System

Connection Check

Registration

Log

Language

Device Mode

**Admin Password**

The 'admin' account can access the management interface. The admin has read/write access and can change passwords. By default there is no password configured. It is highly recommended that you create a password to keep your router secure.

**Admin Password**

Please enter the same password into both boxes, for confirmation.

Password

Verify Password

**Administration**

Enable HTTPS Server  Off

**Remote Management**

Enable Remote Management  Off

Remote Admin Port

Use HTTPS  Off

Cancel Save

© 2011 Western Digital. All rights reserved.

### Screens

**Administrator** – The admin account manages the router interface and can enable remote access. The admin has read/write access and can create passwords. **The default password is password.** To keep your router secure, it is a best practice to create a new one. See “Changing the Administrator's Password” on page 44.

**Time Settings** – Configure, update, and maintain the correct time on the router manually or automatically by NTP (Network Time Protocol).

**System** – Check for router firmware updates and upload new firmware. Save configuration settings on your local hard drive, load configuration settings, or restore factory default settings.

**Connection Check** – Use ping tests to check connectivity between the router and network/Internet hosts.

**Registration** – Register your router if you have not already done so. Registering enables WD to notify you of updates to the firmware and send you important information.

**Log** – Display and save logs generated by the router.

**Language** – Change language settings.

**Device Mode** – Configure your router to operate in router mode or extender mode. When the router is used as an access point, extender mode adds wireless capability to your existing network, expanding Internet access to all the computers in your home.

## Glossary

Setting	Description
Admin Password	Configure a password for the “admin” account.
Original Password	Enter in your existing password to change your password. The default is password.
New Password/Verify New Password	Type the same password in each.
Administration	
HTTPS Server	Click to enable or disable Hypertext Transfer Protocol Secure (HTTPS), a combination of Hypertext Transfer Protocol (HTTP) with SSL/TLS protocol. It provides encrypted communication and secure identification of a network web server. <b>COPIED</b>
Remote Management	Click to enable the user to manage the router from a remote location.
Remote Admin Port	The port that will be used for remote management connections.
Use HTTPS	Click to enable or disable use of HTTPS for remote management of the router.
Time	Current date and time at the router’s location.
Time Zone	Select the region in which the router is located.
Enable Daylight Saving	Click to enable or disable Daylight Saving time.
Daylight Saving Offset	If you select Daylight Saving time, from the drop-down list, select the daylight saving offset. The offset is a formula that combines a time of day with the time zone and is based on a 24-hour clock.
Daylight Saving Dates	If you select Daylight Saving time, from the drop down lists select the month, week, day of the week, and time of the start and end of Daylight Saving time in your time zone.
Automatic Time and Date Configuration:	
Network Time Protocol Function	Click to enable use of Network Time Protocol (NTP).
Adding User Defined NTP Server	Add alternate NTP servers to be used.
NTP Server Used	From the drop-down list, select the name of the NTP server you will use.
Firmware Information:	
Current Firmware Version	Version of the router’s current firmware.
Current Firmware Date	Date of current firmware.
Check Online Now for Latest Firmware Version	Click <b>Check Now</b> to find newer firmware, if available.

Setting	Description
Firmware Upgrade from a File:	Click <b>Choose a File</b> and browse to the latest firmware file.
Select a File to Upgrade	If you locate firmware that is more recent than your current firmware, select the file and save it. Click <b>Upload</b> to upgrade the router firmware.
Save Settings to a File	Click <b>Save Configuration</b> . The router's current configuration is downloaded to your computer.
Restore Settings from a File	To restore settings from a file, click <b>Choose File</b> and select it. Click <b>Restore Configuration</b> .
Reset to Factory Default Settings	To reset the router to its original settings, click <b>Reset</b> .
Reboot the router	Click <b>Reboot</b> .
Ping Test	
Host Name or IP Address	Enter the host name or IP address of a computer you want to locate on the network and click <b>Ping</b> .
Ping Result	If the computer is in the network, the router will locate it.
First Name, Last Name, Email Address	Enter your first and last name and email address to register your router.
Save Log File to Local Hard Drive:	After generating a log file, click <b>Save</b> .
Log Level	From the drop-down list, select the alert level of the log you want to generate.
Log Type	From the drop-down list, select the type of log you want to generate.
Log Table:	Click the tabs to reveal the log pages you want to view or to clear or refresh the table.
Select Language	From the drop-down list, select the language of the UI and report text.
Mode	From the drop-down list, select whether the router should be in Router Mode or Extender Mode. When this device is set to Extender Mode, it adds/extends wireless capability to your existing network.

## 6

## Performing Advanced Tasks

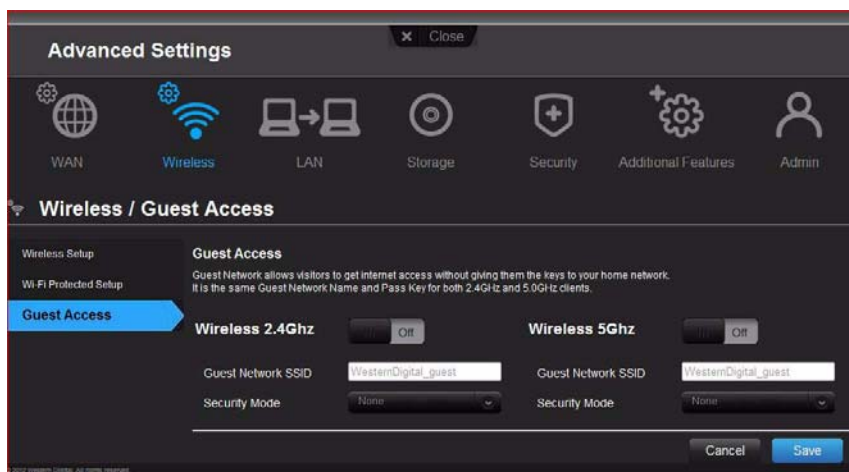
This chapter describes the most important tasks the administrator performs in setting up and maintaining the My Net router. It includes the following topics:

- [Enabling Guest Access](#)
- [Setting Up Parental Controls](#)
- [Changing the Administrator's Password](#)
- [Upgrading the Router's Firmware](#)
- [Restoring the Router to Factory Defaults](#)
- [Rebooting the Router](#)
- [Using the Router as an Access Point?](#)
- [Setting up the DHCP Server on the My Net Router](#)
- [Configuring UPnP](#)
- [Enabling Port Forwarding](#)

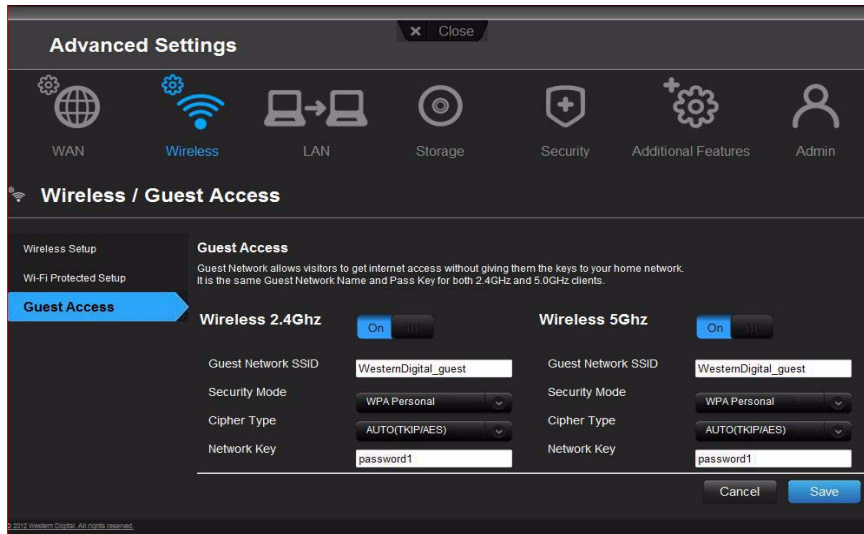
### Enabling Guest Access

To enable guest access to your network:

1. Click the **Advanced** icon and then the **Wireless** icon to display the Wireless/Guest Access screen.
2. Click the **Guest Access** tab.



3. For the wireless 2.4 GHz and/or 5 GHz band, toggle the **On/Off** button to turn access on.



4. Specify the following:

Setting	Description
Guest Network SSID	Accept the default value or enter another name for the wireless bands. The 2.4 GHz and 5 GHz wireless bands have the same name.
Security Mode	The default value is None. To restrict guess access, select the type of security needed from the drop-down list: <ul style="list-style-type: none"> <li>WPA/WPA2 Personal</li> <li>WPA2 Personal</li> <li>WPA Personal</li> </ul>
Network Key	Create a password for the guest user to prevent an unauthorized user from accessing your network.

5. Click **Save**.

## Setting Up Parental Controls

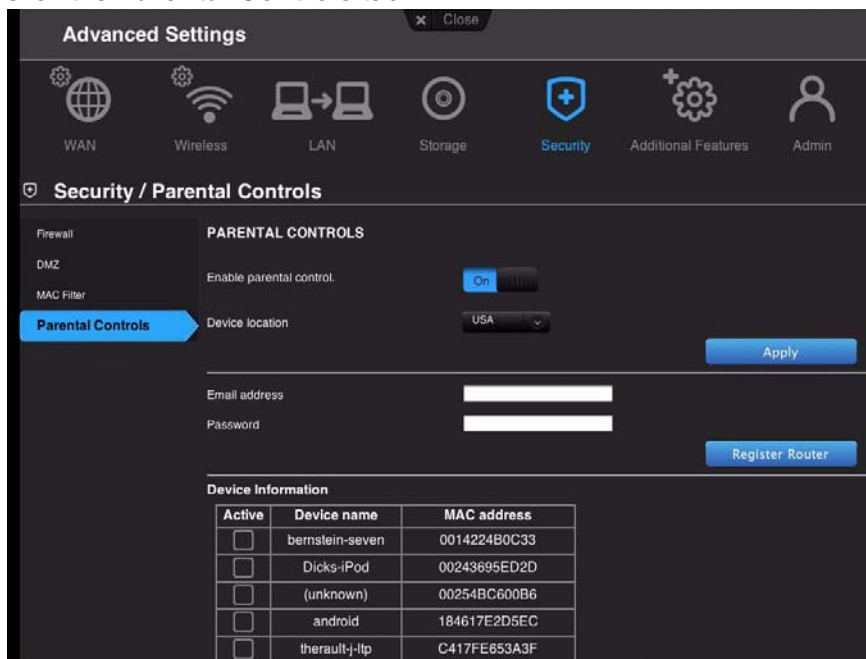
### Register Your Router

Set up your router with parental controls that restrict the websites and content it allows a user to access on the Internet. You may have enabled parental controls on the basic Wireless screen (see “Configuring Wireless Settings” on page 17). Here on the Advanced Wireless screen, you can be more specific.

To set up parental controls:

1. Click the **Advanced** icon and then the **Security** icon to display the Security / Parental controls screen.

- Click the **Parental Controls** tab.



- Toggle the **Enabled parental control** button to **ON**.
- For **Device location**, select the location of the **router** or the **wireless/wired device**?
- Click **Apply**. The screen expands to enable you to register the router and devices using the router.
- Enter your username and password and click **Register Router**. After registration takes place, open the confirmation that was sent to your email address. Follow the instructions in the email to confirm your registration of Parental Controls. Parental Controls will be activated five minutes after you confirm your registration.
- Enter its MAC address (**does this auto populate somehow?**).
- Click **Register Device**.

## Managing Parental Controls

Once you register, you will be able to log in to the WD Internet Security and Parental Control Policy Management page using your login name (email) and password.

The WD Internet Security and Parental Control Policy Management page has three features:

**User Info** – Enables you to:

- Reset/change your Parental Controls login password.
- Define the password reset question and its answer in case you lose the password and need to retrieve it later.

**Safe / Block** – Enables you to define and set your safe or block list by entering up to 60 URLs.

**Time Block** – Enables you to block as follows:

- Time block allows you to set the web filtering level by time range.
- Web filtering level:
  - All – Blocks all web access regardless of category

- Maximum – Protects against social networks, video, **etc.** Includes all lower level blocks
- High – Protects against dating and all adult-related contents. Includes all lower level blocks
- Medium – Protects against gambling, alcohol, and tobacco. Includes all lower level blocks
- Moderate – Protects against occult, illegal acts, **etc.** Includes all **lower level blocks?**
- Low – Protects against pornography and hard core adult contents
- None – Does not provide blocking; allows all web access

**NEED SCREEN SHOT**

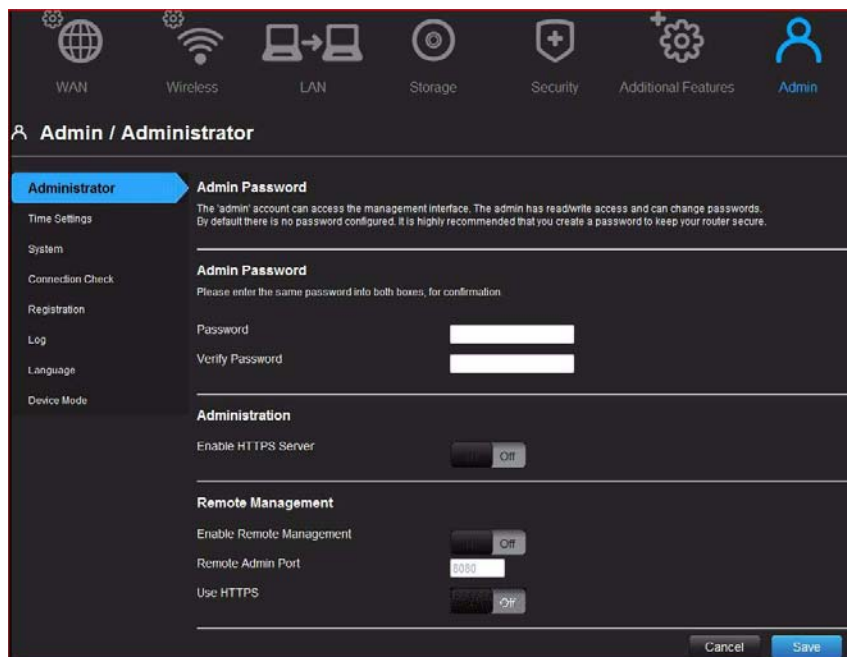


## Changing the Administrator's Password

It is a good practice to change the administrator's user name and password for accessing and managing the router.

To change the admin's password:

1. Click the **Advanced** icon and then the **Administrator** icon to display the Admin / Administrator screen.



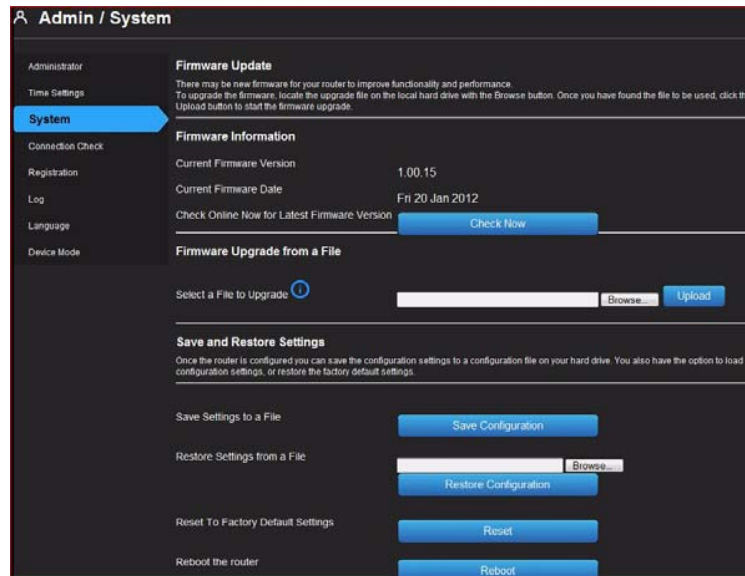
2. Enter your **new** password in the **Password** and **Verify Password** fields and click **Save**.

## Upgrading the Router's Firmware

*Note:* For best results, upload the firmware using a wired connection.

1. Click the **Advanced** icon and then the **Administrator** icon.
2. Click the **System** tab.

## NEED BETTER GRAPHIC

**To check for the latest firmware version:**

1. Click **Check Now**. The router searches the WD website for a new firmware file.
2. If a new file exists, the latest firmware version and an **Update Now** button appear.
3. Click **Update Now** to begin the firmware update. A message informs you of how long the upload will take. Please wait while the firmware update is taking place.

**To upgrade from a file:**

1. Locate the upgrade file on the WD Support site at <http://support.wdc.com> and download it to your computer.
2. On the router screen, browse to the upgrade file you saved and click **Open**. The file name displays in the browser field on the router screen.
3. Click **Upload**. A message says how long the upload will take. Please wait while the firmware update is taking place.

---



**Important: Do not disconnect or turn off the router while the upload is taking place.**

---

## Restoring the Router to Factory Defaults

You may want to reset the router to how it was when you bought it. You have two options for restoring factory defaults: through the user interface or through the reset button on the bottom of the router.

**To use the user interface:**

1. Click the **Advanced** icon  and then the **Administrator** icon .
2. Click the **System** tab.
3. Click **Reset** to the right of **Reset to Factory Default Settings**.
4. When a confirmation message displays, click **OK**.
5. Wait until the router reboots before using it.

## To reset the router manually: **NEED GRAPHIC?**

Using a sharp object, push the reset button for at least 10 seconds.  
When the reset finishes, the Power LED blinks.

## Rebooting the Router

You can reboot the router using two methods. If you are physically close to it, just push the **On/Off** button on the router. If you cannot easily push the button:

1. Click the **Advanced** icon and then the **Administrator** icon.
2. Click the **System** tab.
3. Scroll to the bottom of the screen and click **Reboot**.

## Using the Router as an Access Point?

**CHHAY AND ROBERT**

## Setting up the DHCP Server on the My Net Router

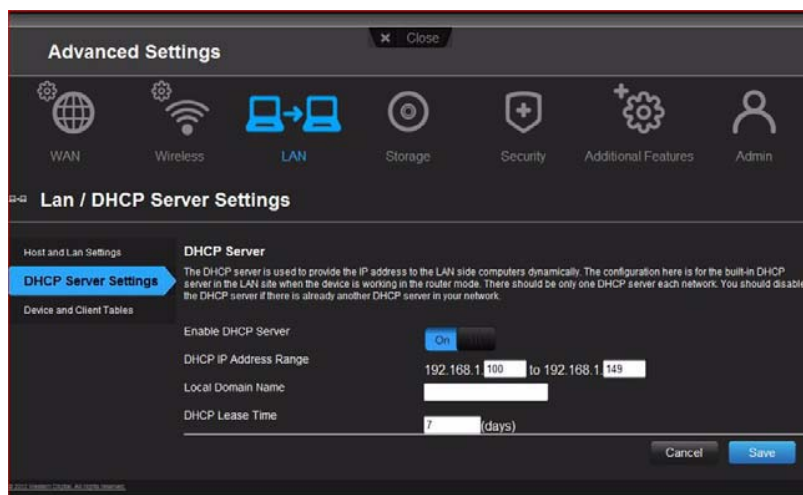
You can use your router as a DHCP server that assigns IP addresses to other components of your network.

To set up a DHCP Server on My Net Router:

1. Click the **Advanced** icon and then the **LAN** icon.
2. Click the **Host** and **LAN** settings????

*Note:* With a Subnet Mask of 255.255.255.0, you can have max number of 254 client devices in your network. **HOW DO YOU GET A SUBNET MASK OF 255.255.255.0? WHAT IS THE DIFFERENCE BETWEEN A SUBNET AND A SUBNET MASK?**

3. Click the **DHCP Server Settings** tab.



4. Enable **DHCP server** (ON by default) and click Save.
5. Configure **DHCP IP Address Range** with starting IP addresses 192.168.1.100 to ending IP addresses 192.168.1.149.
6. (Optional) Set a **Local Domain Name**. **See pg. 30 for** explanation of the Local Domain Name field.

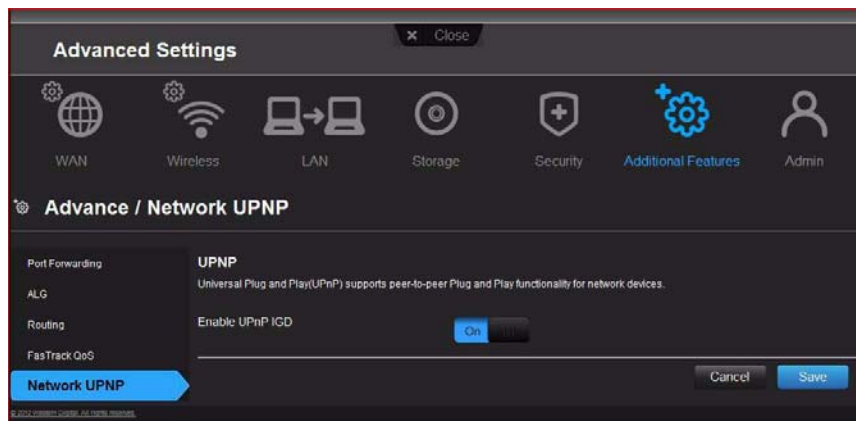
7. Set the **DHCP Lease Time** (hours) and click **Save**.
8. Connect all the client devices.
9. Click the **Device and Client Table** tab. **NEED SCREEN SHOT**  
The DHCP Client Table populates **(OR IS POPULATED BY?)** all the client (wired/wireless) devices and displays the number of devices connected along with IP address and MAC address of each device.

## Configuring UPnP

UPnP enables networked devices to discover each other and start working together on a network.

### To enable UPnP:

1. Click the **Advanced** icon and then the **Additional Features** icon.
2. Click the **Network UPnP** tab.



3. To enable UPnP, toggle the UPnP IGD button to **On**. (UPnP is enabled by default.)
4. Click **Save**.

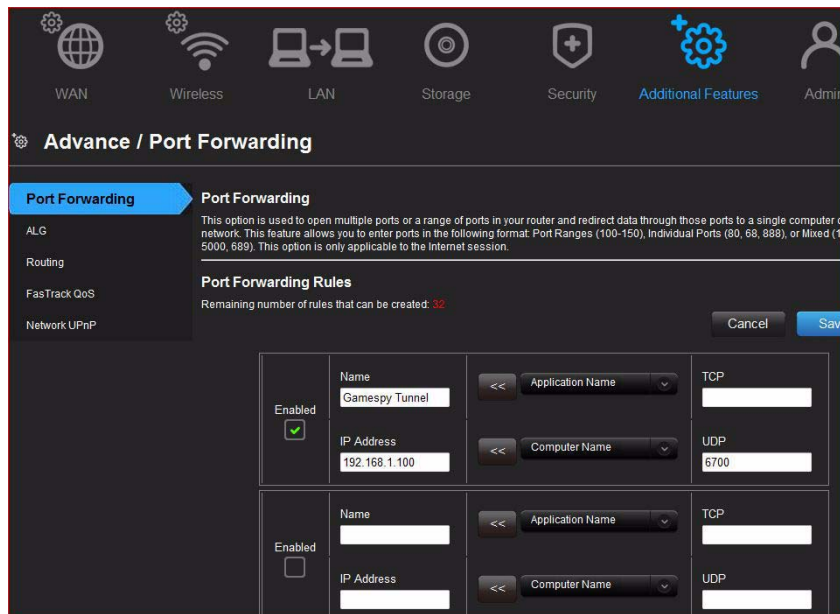
## Enabling Port Forwarding

On a private network, port forwarding maps Internet traffic coming into a specific port to a specific device on your LAN like a web server. Port forwarding is useful, for example, when you host a game to which others want to connect. Instead of their being blocked **because of the router's network address translation (NAT)**, port forwarding allows their information to come through.

To create port forwarding rules:

1. Click the **Advanced** icon and then the **Additional Settings** icon.

2. Click the **Port Forwarding** tab. **NEED BETTER GRAPHIC**



3. Enter the following for each port forwarding rule you create:

Setting	Description
Enabled	Selecting the check box enables the port forwarding rule.
IP Address	IP address of the device on your local network. This field can be populated by selecting a Computer Name from the drop down list.
Application Name	From the drop-down list, select the application whose information will pass through the specified port? Click the double arrow button to the left to populate the name field.
External Port	Enter the port(s) you wish to forward from the WAN interface (Internet). The port is automatically populated if you pick an application from the drop-down list.
Internal Port	Enter the port(s) you wish to forward to on the LAN client. The port is automatically populated if you pick an application from the drop-down list.
Protocol	Select the protocol which you wish to port forward. The options are All, TCP or UDP. The protocol is automatically selected if you pick an application from the drop-down list.
Computer Name	From the drop-down list, select the computer that will receive the information? Click the double arrows to the left to populate the IP address field.
UDP (User Datagram Protocol)	Protocol for transmitting data over a network. When data is sent, the recipient does not acknowledge receiving it.

4. Click **Save** at the top or bottom of the page.

## 7

## Installing and Using WD Print Share

### DEREK

Your My Net router can share a printer, a multi-function printer, or a scanner with computers on your network. Just connect the printer/scanner to an available USB port on the router, install the printer/scanner manufacturer's software, and then install WD Print Share software on each computer that will share the printer/scanner.

This chapter contains the following topics:

- [Installing WD Print Share \(Windows PC\)](#)
- [Using WD Print Share](#)

### Installing WD Print Share (Windows PC)

Before installing WD Print Share software, make sure the manufacturer's printer/scanner driver and software are installed in your PC.

1. Connect the USB printer/scanner to any available USB port on the back your router.
2. Insert the **Setup & Resource (NEW NAME OF THE CD?)** into your computer's CD drive. If the setup screen doesn't start automatically, open the CD and double-click **EasySetup.exe**.
3. If you have already set up your router, click **Skip and go to software installation**. **DO THEY HAVE TO HAVE SET UP THE ROUTER FIRST TOO?**
4. Select **WD Print Share** and click **Next** to start installation.
5. When the installation is done, the WD Print Share Control Center appears with the printer/scanner listed under Device. **.NEED GRAPHIC WITH AUTO-CONNECTED**



6. Make sure the status is Auto-Connected or Connected. **WOULDN'T BE CONNECTED UNLESS YOU CLICKED THE BUTTON?** You are now ready to print.

### Using WD Print Share

#### Using an Auto-Connected Printer

By default, the printer is in Auto-Connected mode, which allows the computer to be connected to the printer only when you send a print job to the printer. Another user in the network can use the printer while you are disconnected. **IS THIS ONLY FOR PRINTERS?**

## Using the Connect Button

Connected mode is for both printing and scanning. Selecting the printer or scanner and clicking **Connect** manually connects the device to your computer for the timeout duration you have set in **Tool > Set Timeout** in the menu.

### Using the Connect Button With a Scanner

1. Select the scanner from the list on the WD Print Share Control Center.
2. Click **Connect**. The status changes to **Connected**.
3. Launch the software that came with your scanner.
4. After the scanning job is done, disconnect by clicking **Disconnect** or let the scanner disconnect automatically in the predefined time set in **Tool > Set Timeout** in the menu.  
**DEFAULT?**

## Using the Scan Button

You can also use the **Scan** button on the WD Print Share Control Center to activate scanning with the industry standard TWAIN or WIA interface.

1. Select the scanner from the list on the WD Print Share Control Center
2. Click **Scan**. You are prompted to select a scanner interface. A scanner user interface appears on the screen.
3. Choose options and click **Scan** to scan your picture or document.
4. After scanning is done, click **Close**.

## 8

## Troubleshooting

OTHER TOPICS: Internet LED does not illuminate? Internet connection failed?

### SETH ASKING ALPHA ABOUT HARDWARE

Problem	Solution
The power LED does not illuminate.	<ol style="list-style-type: none"> <li>1. Ensure that the power cord is correctly connected to the switch.</li> <li>2. Ensure that the electrical outlet is working properly. Plug a different electronic device into the outlet and try to power it on.</li> <li>3. Ensure that you are using the AC adapter provided with the switch.</li> </ol>
A port number LED does not illuminate.	<ol style="list-style-type: none"> <li>1. Ensure that the Ethernet cable(s) are correctly connected to the ports on both the device and the router.</li> <li>2. Ensure that the connected device is powered on.</li> </ol>
Reasons for needing reset	To reset your My Net router to factory defaults, press and hold the reset button with a sharp, pointed object like the end of a paper clip for at least 10 seconds. When the reset finishes, the Power LED blinks.
Connectivity	Channel width options?



## 9

## Regulatory and Warranty Information

This chapter contains the following topics:

- [Regulatory Compliance](#)
- [Warranty Information \(All Regions Except Australia/New Zealand\)](#)
- [Warranty Information \(Australia/New Zealand only\)](#)
- [Environmental Compliance \(China\)](#)

### Regulatory Compliance

#### Federal Communication Commission Interference Statement

This device complies with Part 15 of the FCC Rules. Operation is subject to the following two conditions: (1) This device may not cause harmful interference, and (2) this device must accept any interference received, including interference that may cause undesired operation.

This equipment has been tested and found to comply with the limits for a Class B digital device, pursuant to Part 15 of the FCC Rules. These limits are designed to provide reasonable protection against harmful interference in a residential installation. This equipment generates, uses and can radiate radio frequency energy and, if not installed and used in accordance with the instructions, may cause harmful interference to radio communications. However, there is no guarantee that interference will not occur in a particular installation. If this equipment does cause harmful interference to radio or television reception, which can be determined by turning the equipment off and on, the user is encouraged to try to correct the interference by one of the following measures:

- Reorient or relocate the receiving antenna.
- Increase the separation between the equipment and receiver.
- Connect the equipment into an outlet on a circuit different from that to which the receiver is connected.
- Consult the dealer or an experienced radio/TV technician for help.

#### Regulatory Information/Disclaimers

Installation and use of this Wireless LAN device must be in strict accordance with the instructions included in the user documentation provided with the product. Any changes or modifications (including the antennas) made to this device that are not expressly approved by the manufacturer may void the user's authority to operate the equipment. The manufacturer is not responsible for any radio or television interference caused by unauthorized modification of this device, or the substitution of the connecting cables and equipment other than manufacturer specified. It is the responsibility of the user to correct any interference caused by such unauthorized modification, substitution or attachment. Manufacturer and its authorized resellers or distributors will assume no liability for any damage or violation of government regulations arising from failing to comply with these guidelines.

For operation within 5.15 ~ 5.25GHz frequency range, it is restricted to indoor environment. This device meets all the other requirements specified in Part 15E, Section 15.407 of the FCC Rules.

**CAUTION:** To comply with FCC RF exposure compliance requirements, the antenna used for this transmitter must be installed to provide a separation distance of at least 20 cm from all persons and must not be co-located or operating in conjunction with any other antenna or transmitter.

*Note:* The country code selection is for non-US models only and is not available for all US models. Per FCC regulations, all WiFi products marketed in the US must be fixed to US operation channels only.

### Industry Canada (IC)

This device complies with RSS-210 of the Industry Canada Rules. Operation is subject to the following two conditions: (1) This device may not cause harmful interference, and (2) this device must accept any interference received, including interference that may cause undesired operation.

Ce dispositif est conforme à la norme CNR-210 d'Industrie Canada applicable aux appareils radio exempts de licence. Son fonctionnement est sujet aux deux conditions suivantes: (1) le dispositif ne doit pas produire de brouillage préjudiciable, et (2) ce dispositif doit accepter tout brouillage reçu, y compris un brouillage susceptible de provoquer un fonctionnement indésirable.

**CAUTION!** The device for operation in the band 5150-5250 MHz is only for indoor use to reduce the potential for harmful interference to co-channel mobile satellite systems.

**AVERTISSEMENT!** Les dispositifs fonctionnant dans la bande 5150-5250 MHz sont réservés uniquement pour une utilisation à l'intérieur afin de réduire les risques de brouillage préjudiciable aux systèmes de satellites mobiles utilisant les mêmes canaux.

**Radiation Exposure Statement:** This equipment complies with IC radiation exposure limits set forth for an uncontrolled environment. This equipment should be installed and operated with minimum distance 20 cm between the radiator and your body.

**Déclaration d'exposition aux radiations:** Cet équipement est conforme aux limites d'exposition aux rayonnements IC établies pour un environnement non contrôlé. Cet équipement doit être installé et utilisé avec un minimum de 20 cm de distance entre la source de rayonnement et votre corps.

### ICES-003/NMB-003 Statement

Cet appareil numérique de la classe B est conforme à la norme ICES-003 du Canada.

This device complies with Canadian ICES-003 Class B.

This product is intended to be supplied by a listed limited power source, double insulated, or direct plug-in power unit marked "Class 2."

### Safety Compliance

Approved for US and Canada. CAN/CSA-C22.2 No. 60950-1, UL 60950-1: Safety of Information Technology Equipment.

Approuvé pour les Etats-Unis et le Canada. CAN/CSA-C22.2 No. 60950-1, UL 60950-1: Sûreté d'équipement de technologie de l'information.

This device is only for use with the compatible UL Listed AC adapter.

Cet appareil n'est destiné qu'à des adaptateurs compatibles marqués "UL Listed".

## 以下警語適用台灣地區

經型式認證合格之低功率射頻電機，非經許可，公司、商號或使用者均不得擅自變更頻率、加大功率或變更原設計之特性及功能。

低功率射頻電機之使用不得影響飛航安全及干擾合法通信；經發現有干擾現象時，應立即停用，並改善至無干擾時方得繼續使用。前項合法通信，指依電信法規定作業之無線電通信。低功率射頻電機須忍受合法通信或工業、科學及醫療用電波輻射性電機設備之干擾。

5.25 ~ 5.35GHz 限室內使用

## CE Compliance for Europe

Operation of this device is subjected to the following National regulations and may be prohibited to use if certain restriction should be applied.

Marking by the CE symbol indicates compliance of this system to the applicable Council Directives of the European Union, including the EMC Directives (2004/108/EC), (1999/5/EC), the Low Voltage Directive (2006/95/EC), and EuP Directive (2005/32/EC). A "Declaration of Conformity" in accordance with the applicable directives has been made and is on file at Western Digital Europe.

Die Kennzeichnung mit dem CE-Symbol zeigt an, dass dieses System die anwendbaren Richtlinien der Europäischen Union erfüllt, einschließlich der EMV-Richtlinien (2004/108/EG), (1999/5/EG), der Niederspannungsrichtlinie (2006/95/EG) und der Richtlinie (2005/32/EG) des Europäischen Parlaments. Eine „Konformitätserklärung“ gemäß den anwendbaren Richtlinien wurde abgegeben und kann bei Western Digital Europe eingesehen werden.

Le symbole CE sur l'appareil indique la conformité de cet appareil avec les directives applicables du Conseil de l'Union Européenne, dont les directives EMC (2004/108/EC), (1999/5/EC), la directive sur les limites de tension (2006/95/EC) et la directive EuP (2005/32/EC), si applicable. Une « déclaration de conformité » conforme aux directives applicables a été effectuée et est consultable chez Western Digital Europe.

Il marchio CE indica la conformità del sistema alle direttive applicabili del Consiglio dell'Unione europea, tra cui le Direttive EMC (2004/108/CE), (1999/5/CE), la Direttiva Bassa Tensione (2006/95/CE), e la Direttiva EuP (2005/32/CE). Una "Dichiarazione di conformità" redatta in base alle direttive vigenti è disponibile presso Western Digital Europe.

La marca con el símbolo CE indica el cumplimiento de este sistema de las Directivas del Consejo de la Unión Europea correspondientes, incluidas las directivas EMC (2004/108/EC) y (1999/5/EC), la Directiva de bajo voltaje (2006/95/CE) y la Directiva EuP (2005/32/EC). Se ha realizado una "Declaración de conformidad" de acuerdo con las directivas aplicables y se encuentra archivada en Western Digital Europe.

CE-märkningen innebär att detta system uppfyller Europeiska Unionens tillämpliga rådsdirektiv, inklusive EMC-direktivet (2004/108/EC), (1999/5/EC), lågspänningsdirektivet (2006/95/EC) och EuP-direktivet (2005/32/EC). En "Konformitetsdeklaration" i enlighet med gällande direktiv har gjorts och finns arkiverad hos Western Digital Europe.

Merking med CE-symbolet indikerer at dette systemet samsvarer med gjeldende direktiver (council directives) for EU, inkludert EMC-direktiv (2004/108/EF), (1999/5/EF), Lavspenningsdirektiv (2006/95/EF) og EuP-direktiv (2005/32/EF). En "Samsvarserklæring" i henhold til gjeldende direktiver har blitt opprettet og er i Western Digital Europas arkiver.

CE-merkintä osoittaa tämän järjestelmän yhdenmukaisuuden sovellettavissa olevien Euroopan yhteisön neuvoston direktiivien kanssa, mukaan lukien EMC-direktiivi (2004/108/EC), (1999/5/EC), alijännitedirektiivi (2006/95/EC) sekä EuP-direktiivi

(2005/32/EC). "Noudattamisjulistus" on jätetty asiaankuuluvien direktiivien mukaisesti, ja se on tallessa Western Digital Europessa.

Mærkning med CE-symbolet angiver at systemet overholder Europaparlamentets og Rådets direktiver, herunder EMC-direktiverne (elektromagnetisk kompatibilitet) (2004/108/EC), (1999/5/EC) og lavspændingsdirektivet (2006/95/EC) og EuP-direktivet 2005/32/EC. En "Declaration of Conformity" (overensstemmelsesattestering) i henhold til gældende direktiver er afgivet og opbevares hos Western Digital Europe.

Маркировка символом CE свидетельствует о соответствии настоящей системы положениям применимых директив Совета Европейского Союза, в том числе директив об электромагнитной совместимости (2004/108/EC, 1999/5/EC), директивы о низковольтном оборудовании (2006/95/EC) и директивы об устройствах, использующих электроэнергию (2005/32/EC). Заявление о соответствии положениям применимых директив, сделанное компанией Western Digital, находится в архиве её европейского подразделения.

Η σήμανση με το σύμβολο CE υποδεικνύει ότι το σύστημα αυτό συμμορφώνεται με τις ισχύουσες οδηγίες του Συμβουλίου της Ευρωπαϊκής Ένωσης, συμπεριλαμβανομένων των οδηγιών περί ηλεκτρομαγνητικής συμβατότητας (2004/108/ΕΚ), (1999/5/ΕΚ), της οδηγίας περί χαμηλής τάσης (2006/95/ΕΚ) και της οδηγίας του Ευρωπαϊκού Κοινοβουλίου (2005/32/ΕΚ). Έχει πραγματοποιηθεί μία «Δήλωση συμμόρφωσης», σύμφωνα με τις ισχύουσες οδηγίες και τηρείται στα αρχεία της Western Digital Ευρώπης.

التميز بوضع الرمز CE إلى توافق هذا النظام مع توجيهات المجلس القابلة للتطبيق والخاصة بالاتحاد وبي، بما في ذلك توجيهات التوافقية الكهرومغناطيسية (EMC) (2004/108/EC) وتوجيهات الجهد ابي المنخفض (2006/95/EC) وتم وضع "إعلان المطابقة" وفقاً للتوجيهات القابلة للتطبيق وهو موجود في على Western Digital Europe.


## Environmental Compliance (China)

### 产品中有毒有害物质或元素的名称及含量

部件名称	有毒有害物质或元素					
	铅	汞	镉	六价铬	多溴联苯	多溴二苯醚
机壳/机箱	X	0	0	0	0	0
电路板组合 / 板卡	X	0	0	0	0	0
电源变压器 / 电源供应器	X	0	0	0	0	0

0: 代表此种部件的所有均质材料中所含的该种有毒有害物质均低于中华人民共和国信息产业部所颁布的《电子信息产品中有毒有害物质的限量要求》(SJ/T 11363-2006) 规定的限量。  
X: 代表此种部件所用的均质材料中, 至少有一类材料其所含的有毒有害物质高于中华人民共和国信息产业部所颁布的《电子信息产品中有毒有害物质的限量要求》(SJ/T 11363-2006) 规定的限量

除非产品上另有标记, 所有内附产品及其部件的“环保使用期限”均由此显示的符号表示。此环保使用期限只适用于产品手册中所规定的使用条件。  
(在此表中, 企业可能需要根据实际情况对标记“X”的项目进行进一步的技术性解释。)



## Warranty Information (All Regions Except Australia/New Zealand)

### Limited Warranty

WD warrants that the Product, in the course of its normal use, will for the term defined below, be free from defects in material and workmanship and will conform to WD's specification therefor. The term of your limited warranty depends on the country in which your Product was purchased. The term of your limited warranty is for

1 year in the North, South and Central America region, 2 years in the Europe, the Middle East and Africa region, and 3 years in the Asia Pacific region, unless otherwise required by law. The term of your limited warranty period shall commence on the purchase date appearing on your purchase receipt. WD may at its discretion make extended warranties available for purchase. WD shall have no liability for any Product returned if WD determines that the Product was stolen from WD or that the asserted defect a) is not present, b) cannot reasonably be rectified because of damage occurring before WD receives the Product, or c) is attributable to misuse, improper installation, alteration (including removing or obliterating labels and opening or removing external enclosures, unless the product is on the list of limited user-serviceable products and the specific alteration is within the scope of the applicable instructions, as found at <http://support.wdc.com>), accident or mishandling while in the possession of someone other than WD. Subject to the limitations specified above, your sole and exclusive warranty shall be, during the period of warranty specified above and at WD's option, the repair or replacement of the Product with an equivalent or better Product. The foregoing warranty of WD shall extend to repaired or replaced Products for the balance of the applicable period of the original warranty or ninety (90) days from the date of shipment of a repaired or replaced Product, whichever is longer.

The foregoing limited warranty is WD's sole warranty and is applicable only to products sold as new. The remedies provided herein are in lieu of a) any and all other remedies and warranties, whether expressed, implied or statutory, including but not limited to, any implied warranty of merchantability or fitness for a particular purpose, and b) any and all obligations and liabilities of WD for damages including, but not limited to accidental, consequential, or special damages, or any financial loss, lost profits or expenses, or lost data arising out of or in connection with the purchase, use, or performance of the Product, even if WD has been advised of the possibility of such damages. In the United States, some states do not allow exclusion or limitations of incidental or consequential damages, so the limitations above may not apply to you. This warranty gives you specific legal rights, and you may also have other rights which vary from state to state.

## Obtaining Service

WD values your business and always attempts to provide you the very best of service. If this Product requires maintenance, either contact the dealer from whom you originally purchased the Product or visit our product support Web site at <http://support.wdc.com> for information on how to obtain service or a Return Material Authorization (RMA). If it is determined that the Product may be defective, you will be given an RMA number and instructions for Product return. An unauthorized return (i.e., one for which an RMA number has not been issued) will be returned to you at your expense. Authorized returns must be shipped in an approved shipping container, prepaid and insured, to the address provided on your return paperwork. Your original box and packaging materials should be kept for storing or shipping your WD product. To conclusively establish the period of warranty, check the warranty expiration (serial number required) via <http://support.wdc.com>. WD shall have no liability for lost data regardless of the cause, recovery of lost data, or data contained in any Product placed in its possession.

## Warranty Information (Australia/New Zealand only)

**For consumers purchasing products in Australia and New Zealand, please refer to this warranty information.**

Nothing in this warranty modifies or excludes your legal rights under the Australian Competition and Consumer Act or the New Zealand Consumer Guarantees Act. This warranty identifies WD's preferred approach to resolving warranty claims which is likely to be quick and simple for all parties.

No other warranties either express or implied by law, including but not limited to those contained in the Sale of Goods Act, are made with respect to the Product. If you purchased your Product in New Zealand for the purposes of a business, you acknowledge and agree that the New Zealand Consumer Guarantees Act does not apply.

In Australia, our goods come with guarantees that cannot be excluded under the Australian Consumer Law. You are entitled to a replacement or refund for a major failure and compensation for any other reasonably foreseeable loss or damage. You are also entitled to have the goods repaired or replaced if goods fail to be of acceptable quality and the failure does not amount to a major failure. What constitutes a major failure is set out in the Australian Consumer Law.

## Warranty

WD warrants that the Product, in the course of its normal use, will for the term defined below, be free from defects in material and workmanship and will conform to WD's specifications. The term of your warranty is 3 years in Australia and New Zealand, unless otherwise required by law. The term of your warranty period shall commence on the purchase date appearing on your purchase receipt from an authorized distributor or authorized reseller. Proof of purchase shall be required to be eligible for this warranty and to establish the commencement date of this warranty. Warranty service will not be provided unless the Product is returned to an authorized distributor, authorized reseller or regional WD return center where the Product was first shipped by WD. WD may at its discretion make extended warranties available for purchase. WD shall have no liability for any Product returned if WD determines that the Product was (i) not purchased from an authorized distributor or authorized reseller, (ii) not used in accordance with WD specifications and instructions, (iii) not used for its intended function, or (iv) stolen from WD, or that the asserted defect a) is not present, b) cannot reasonably be rectified because of damage occurring before WD receives the Product, or c) is attributable to misuse, improper installation, alteration (including removing or obliterating labels and opening or removing external enclosures, including the mounting frame, unless the product is on the list of limited user-serviceable products and the

specific alteration is within the scope of the applicable instructions, as found at <http://support.wdc.com>), accident or mishandling while in the possession of someone other than WD.

**PRODUCTS ARE COMPLEX AND FRAGILE ITEMS THAT MAY OCCASSIONALLY FAIL DUE TO (A) EXTERNAL CAUSES, INCLUDING WITHOUT LIMITATION, MISHANDLING, EXPOSURE TO HEAT, COLD, AND HUMIDITY, AND POWER FAILURES, OR (B) INTERNAL FAULTS. SUCH FAILURES CAN RESULT IN THE LOSS, CORRUPTION, DELETION OR ALTERATION OF DATA. NOTE THAT YOU SHALL BE RESPONSIBLE FOR THE LOSS, CORRUPTION, DELETION OR ALTERATION OF DATA HOWSOEVER CAUSED, AND FOR BACKING UP AND PROTECTING DATA AGAINST LOSS, CORRUPTION, DELETION OR ALTERATION. YOU AGREE TO CONTINUALLY BACK UP ALL DATA ON THE PRODUCT, AND TO COMPLETE A BACKUP PRIOR TO SEEKING ANY GENERAL SERVICE AND TECHNICAL SUPPORT FROM WD.**

In Australia, if the Product is not of a kind ordinarily acquired for personal, domestic or household use or consumption, provided it is fair and reasonable to do so, WD limits its liability to replacement of the Product or supply of equivalent or better Product.

This warranty shall extend to repaired or replaced Products for the balance of the applicable period of the original warranty or ninety (90) days from the date of shipment of a repaired or replaced Product, whichever is longer. This warranty is WD's sole manufacturer's warranty and is applicable only to Products sold as new.

## Obtaining Service

WD values your business and always attempts to provide you the very best of service. Should you encounter any problem, please give us an opportunity to address it before returning this Product. Most technical support questions can be answered through our knowledge base or e-mail support service at <http://support.wdc.com>. If the answer is not available or, if you prefer, please contact WD at the applicable telephone number shown in the front of this document.

If you wish to make a claim, you should initially contact the dealer from whom you originally purchased the Product. If you are unable to contact the dealer from whom you originally purchased the Product, please visit our product support Web site at <http://support.wdc.com> for information on how to obtain service or a Return Material Authorization (RMA). If it is determined that the Product may be defective, you will be given an RMA number and instructions for Product return. An unauthorized return (i.e., one for which an RMA number has not been issued) will be returned to you at your expense. Authorized returns must be shipped in an approved shipping container, prepaid and insured, to the address provided with your RMA number. If following receipt of a qualifying claim under this warranty, WD or the dealer from whom you originally purchased the Product determines that your claim is valid, WD or such dealer shall, at its discretion, either repair or replace the Product with an equivalent or better Product or refund the cost of the Product to you. You are responsible for any expenses associated with a claim under this warranty. The benefits provided to you under this warranty are in addition to other rights and remedies available to you under the Australian Competition and Consumer Act or the New Zealand Consumer Guarantees Act.

Your original box and packaging materials should be kept for storing or shipping your WD product. To conclusively establish the period of warranty, check the warranty expiration (serial number required) via <http://support.wdc.com>.

Western Digital Technologies, Inc.  
3355 Michelson Drive, Suite 100  
Phone: 949-672-7000  
E-mail: [support@wdc.com](mailto:support@wdc.com)

## GNU General Public License ("GPL")

Firmware incorporated into this product may include third party copyrighted software licensed under the GPL or Lesser General Public License ("LGPL") (collectively, "GPL Software") and not Western Digital's End User License Agreement. In accordance with the GPL, if applicable: 1) the source code for the GPL Software may be downloaded at no charge from <http://support.wdc.com/download/gpl> or obtained on CD for a nominal charge from <http://support.wdc.com/download/gpl> or by calling Customer Support within three years of the date of purchase; 2) you may re-use, re-distribute, and modify the GPL Software; 3) with respect solely to the GPL Software, no warranty is provided, to the extent permitted by applicable law; and 4) a copy of the GPL is included herewith, may be obtained at <http://www.gnu.org>, and may also be found at <http://support.wdc.com/download/gpl>.

Modification of or tampering with the Software, including but not limited to any Open Source Software, is solely at your own risk. Western Digital is not responsible for any such modification or tampering. Western Digital will not support any product in which you have or have attempted to modify the Software supplied by Western Digital.

# Index

## A

- AC power adapters 5
- access point 46
- accessories 3, 5
- adding a wireless device 21
- administrator password 44
- advanced settings 23
  - administrator 37
  - changing admin password 44
  - guest access 40
  - Internet connection 24
  - parental controls 41
  - rebooting 46
  - restoring to factory defaults 45
  - security 34
  - setting up the DHCP Server 46
  - upgrading firmware 44
  - UPnP 47
  - using the router as an access point 46
  - wireless setup 27

## B

- back view
  - My Net N600 router 6
  - My Net N750 router 7
- bottom view 8
- box contents 4

## C

- CD, getting started with 9
- connecting to the Internet 16

## D

- dashboard icons 13
- DHCP server setup 46
- dual band speed 3

## E

- Easy Setup 9
- environmental compliance (China) 55

## F

- factory defaults, restoring to 45
- features 3
- front view
  - My Net N600 5
  - My Net N750 5

## G

- getting started on Windows with CD 9
- GPL software 55

- guest access 3, 40

## I

- icons, dashboard 13
- installing the router
  - using a Mac 11
  - with Easy Setup (Windows PC) 9
- installing WD software 11
- Internet
  - connection 16
  - security 3

## L

- LEDs
  - My Net N600 7
  - My Net Router N750 7

## M

- My Dashboard
  - accessing 12
  - home page 13
- My Net N600 6
  - back 6
  - front 5
  - LEDs 6
- My Net N750
  - back 6
  - front 5
  - LEDs 6
- My Net View 4

## O

- obtaining service 56
- obtaining service (Australia and New Zealand) 57
- operating precautions 1

## P

- package contents 4
- parental controls 3, 41
- performing advanced tasks 40
- print share 49
- product
  - accessories 5
  - obtaining service 56
  - overview 3
  - recording information 2
  - registration 2
  - regulatory compliance 52
  - safety information 1
  - warranty 56

**R**

- rebooting 46
- registering the router 2
- regulatory compliance 52
- requirements 8
- reset button 8
- restoring to factory defaults 45
- RoHS 55
- router
  - components 7
  - firmware upgrades 44
- router installation
  - with a Mac 11
  - with Easy Setup 10

**S**

- safety instructions 1
- scanner, connecting to 50
- service 56
- service (Australia /New Zealand) 57
- setting up a new router (PC) 10
- settings
  - advanced 23
  - basic 15
  - storage 19
  - wireless 16
- setup
  - Mac computer 11
  - Windows Vista/Win7 9
  - Windows XP 9
- setup options 10
- sharing a printer on the network 49
- software, GPL 55
- speed, wired 3
- storage
  - settings 19
  - USB 3

**T**

- technical specifications 8
- troubleshooting 51

**U**

- upgrading router firmware 44
- UPnP, configuring 47
- USB storage 3

**W**

- warranty 56
- WD Easy Setup wizard for the PC 10
- WD software installation 11
- Wi-Fi Protected Security(WPS) 4

- Windows, getting started with CD 9
- wireless
  - adding devices 21
  - speed, simultaneous dual band 3
- WPS button 6



---

Information furnished by WD is believed to be accurate and reliable; however, no responsibility is assumed by WD for its use nor for any infringement of patents or other rights of third parties which may result from its use. No license is granted by implication or otherwise under any patent or patent rights of WD. WD reserves the right to change specifications at any time without notice.

Western Digital, WD and the WD logo are registered trademarks in the U.S. and other countries; My Net is a registered trademark of Western Digital Technologies, Inc. **Adobe and Adobe Reader and the included Adobe Reader logo are either registered trademarks or trademarks of Adobe Systems Incorporated in the United States and/or other countries.** Other marks may be mentioned herein that belong to other companies.

© 2012 Western Digital Technologies, Inc. All rights reserved.

Western Digital  
3355 Michelson Drive, Suite 100  
Irvine, California 92612 U.S.A.

4779-705072-P5 XXX 2012