

# **Wireless LAN Access Point**

**IEEE 802.11b**

**11Mbps**

**User' s Manual**

# Table of Contents

<b>Chapter 1 Introduction.....</b>	<b>1</b>
1.1 Package Contents .....	2
1.2 Features .....	2
1.3 Specifications.....	2
1.4 Physical Description.....	3
<b>Chapter 2 Wireless LAN Access Point Connection .....</b>	<b>5</b>
<b>Chapter 3 Wireless LAN Access Point Configuration .....</b>	<b>6</b>
3.1 Getting Started .....	6
3.2 Configuring the Access Point.....	10
3.2.1 Status and Information.....	10
3.2.2 Wireless Setting .....	11
3.2.3 Advanced Setting .....	21
3.2.4 Security .....	24
3.2.5 MAC Address Filtering.....	31
3.2.6 System Utility .....	33
3.2.7 Configuration Tool.....	36
3.2.8 Firmware Upgrade .....	38
3.2.9 Reset.....	39
<b>Chapter 4 Troubleshooting .....</b>	<b>40</b>
<b>Chapter 5 Warning Statement .....</b>	<b>42</b>

# Chapter 1 Introduction

This product is an access point for IEEE 802.11b 2.4GHz wireless network. You can use this access point to build up a wireless LAN. Any wireless LAN station can join the wireless network by using the “Infrastructure Mode”.

The product supports WEP, ESSID and MAC address filter functions to consolidate the wireless network security. With ESSID authentication, 64/128 bit WEP encryption and MAC address filtering you can prevent unauthorized wireless stations from accessing your wireless network.

The product’s dipole antenna is detachable by connecting to a RP-SMA connector. Users can install a high gain antenna to the connector for better network link quality so that you can build wireless network with more flexibility.

This product provides easy to use user interface and allows users to configuring from web browser. Also it integrates DHCP server to provide multiple wireless and wired users to get their IP address automatically. With the versatile of features, this product is the best choice for you to integrate your wireless and wired network seamlessly.

## 1.1 Package Contents

The Access Point includes the following items:

- One Access Point
- One Power Adapter
- One User's Manual

## 1.2 Features

- Complies with the IEEE 802.11b (DSSS) 2.4GHz specification.
- High data rate 11, 5.5, 2 and 1Mbps network speed.
- Seamlessly integrate wireless and wired Ethernet LAN networks.
- Auto rate fallback in case of obstacles or interferences.
- Provide 64/128-bit WEP Data Encryption function to protect the wireless data transmissions.
- Built-in DHCP server supports auto IP addresses assignment.
- Supports Web-based configuration.

## 1.3 Specifications

- Standards: IEEE 802.11b (Wireless), IEEE 802.3 (Wired)
- Data Rate: 11/5.5/2/1Mbps auto fallback
- Security: 64/128-bit WEP Data Encryption
- Frequency Band: 2.400~2.4835GHz (Industrial Scientific Medical Band)
- Modulation: CCK@11/5.5Mbps, DQPSK@2Mbps and DBPSK@1Mbps
- Radio Technology: Direct Sequence Spread Spectrum (DSSS)
- Antenna: External detachable dipole antenna (with RP-SMA connector)
- Connectors: 10/100Mbps RJ-45 x 1
- Power: 12VDC, 0.5A
- Transmit Power: 18dBm (Typical)
- LEDs: Power, LAN Link/Activity, Wireless Activity
- Dimension: 30(H) x 127(W) x 96(D) mm
- Temperature:
  - Operating: 32~131°F (0~55°C)
  - Storage: -4~158°F(-20~70°C)

- Humidity: 10-90% (Noncondensing)
- Certification: FCC, CE

## 1.4 Physical Description

### Front Panel

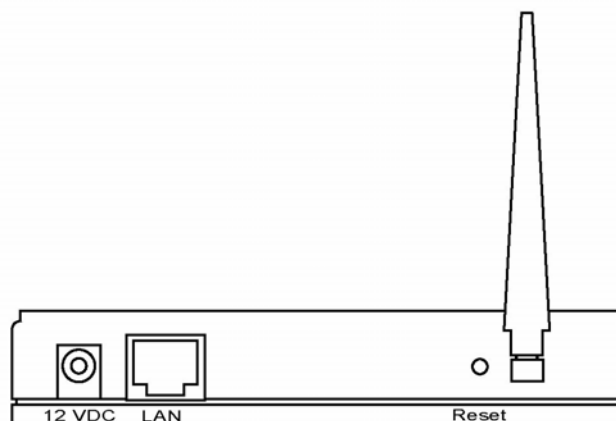
On the Access Point's front panel there are LED lights that inform you of the Access Point's current status. Below is an explanation of each LED.



LED	Color	Status	Description
Power	Green	Lit	Power is supplied.
		Off	No Power.
Wireless Activity	Green	Flash	Antenna is transmitting or receiving data.
		Off	Antenna is not transmitting or receiving data.
LAN Link/Activity	Green	On	A valid link is established.
		Flash	It is transmitting or receiving data.
		Off	No link is established.

### Back Panel

Access Point's connection ports are located on the back panel. Below is the description of each connection port.



- Antenna Connector

This round connection is standard Reverse SMA connector where any antennas with Reverse SMA connector can connect to the Access Point.

- DC Adapter Port

Insert the power jack of the power adapter into this port.

- LAN Port

The Access Point's LAN port is where you connect to your LAN's network devices.

- Reset

The Reset button allows you to do one of two things.

- 1) If problems occur with your Access Point, press the reset button with a pencil tip (for less than 4 seconds) and the Access Point will re-boot itself, keeping your original configurations.
- 2) If problems persist or you experience extreme problems or you forgot your password, press the reset button for longer than 4 seconds and the Access Point will reset itself to the factory default settings (warning: your original configurations will be replaced with the factory default settings).

## Chapter 2 Wireless LAN Access Point Connection

### **1. Locate an optimum location for the Wireless LAN Access Point.**

The best location for your Access Point is usually at the center of your wireless network, with line of sight to all of your mobile stations.

### **2. Connect the Wireless LAN Access Point to your router, hub or switch.**

Connect one end of standard UTP cable to the Access Point's LAN Port and connect the other end of the cable to a switch, a router or a hub. The Access Point will then be connected to your existed wired LAN Network.

### **3. Connect the DC Power Adapter to the Wireless LAN Access Point's Power Socket.**

Only use the power adapter supplied with the Access Point. Using a different adapter may damage the product.

**The Hardware Installation is complete.**

# Chapter 3 Wireless LAN Access Point Configuration

## 3.1 Getting Started

This Access Point provides web-based configuration tool allowing you to configure from wired or wireless stations. Follow the instructions below to get started configuration.

### From Wired Station

1. Make sure your wired station is in the same subnet with the Access Point.

The default IP Address and Sub Mask of the Access Point is:

**Default IP Address: 192.168.2.1**

**Default Subnet: 255.255.255.0**

### Configure your PC to be in the same subnet with the Access Point.

#### 1a) Windows 95/98/Me

1. Click the *Start* button and select *Settings*, then click *Control Panel*. The *Control Panel* window will appear.
2. Double-click *Network* icon. The *Network* window will appear.
3. Check your list of *Network Components*. If TCP/IP is not installed, click the *Add* button to install it now. If TCP/IP is installed, go to **step 6**.
4. In the *Network Component Type* dialog box, select *Protocol* and click *Add* button.
5. In the *Select Network Protocol* dialog box, select *Microsoft and TCP/IP* and then click the *OK* button to start installing the TCP/IP protocol. You may need your Windows CD to complete the installation.
6. After installing TCP/IP, go back to the *Network* dialog box. Select *TCP/IP* from the list of *Network Components* and then click the *Properties* button.
7. Check each of the tabs and verify the following settings:
  - **Bindings:** Check *Client for Microsoft Networks* and *File and printer sharing for Microsoft Networks*.
  - **Gateway:** All fields are blank.
  - **DNS Configuration:** Select *Disable DNS*.
  - **WINS Configuration:** Select *Disable WINS Resolution*.



- **IP Address:** Select *Specify an IP Address*. Specify the IP Address and Subnet Mask as following example.
    - ✓ IP Address: 192.168.2.3 (any IP address within 192.168.2.2~192.168.2.254 is available, **do not setup 192.168.2.1**)
    - ✓ Subnet Mask: 255.255.255.0
8. Reboot the PC. Your PC will now have the IP Address you specified.

### 1b) Windows 2000

1. Click the *Start* button and select *Settings*, then click *Control Panel*. The *Control Panel* window will appear.
2. Double-click *Network and Dial-up Connections* icon. In the *Network and Dial-up Connection* window, double-click *Local Area Connection* icon. The *Local Area Connection* window will appear.
3. In the *Local Area Connection* window, click the *Properties* button.
4. Check your list of *Network Components*. You should see *Internet Protocol [TCP/IP]* on your list. Select it and click the *Properties* button.
5. In the *Internet Protocol (TCP/IP) Properties* window, select *Use the following IP address* and specify the IP Address and Subnet mask as following.
  - ✓ IP Address: 192.168.2.3 (any IP address within 192.168.2.2~192.168.2.254 is available, **do not setup 192.168.2.1**)
  - ✓ Subnet Mask: 255.255.255.0
6. Click *OK* to confirm the setting. Your PC will now have the IP Address you specified.

### 1c) Windows NT

1. Click the *Start* button and select *Settings*, then click *Control Panel*. The *Control Panel* window will appear.
2. Double-click *Network* icon. The *Network* window will appear. Select the *Protocol* tab from the *Network* window.
3. Check if the *TCP/IP Protocol* is on your list of *Network Protocols*. If *TCP/IP* is not installed, click the *Add* button to install it now. If *TCP/IP* is installed, go to **step 5**.
4. In the *Select Network Protocol* window, select the *TCP/IP Protocol* and click the *Ok* button to start installing the *TCP/IP protocol*. You may need your Windows CD to complete the installation.
5. After you install *TCP/IP*, go back to the *Network* window. Select *TCP/IP* from the list of *Network Protocols* and then click the *Properties* button.
6. Check each of the tabs and verify the following settings:

- **IP Address:** Select *Specify an IP address*. Specify the IP Address and Subnet Mask as following example.
    - ✓ IP Address: 192.168.2.3 (any IP address within 192.168.2.2~192.168.2.254 is available, **do not setup 192.168.2.1**)
    - ✓ Subnet Mask: 255.255.255.0
  - **DNS:** Let all fields are blank.
  - **WINS:** Let all fields are blank.
  - **Routing:** Let all fields are blank.
7. Click **OK** to confirm the setting. Your PC will now have the IP Address you specified.
2. Enter **192.168.2.1** from Web Browser to get into the Access Point's configuration tool.
3. A screen will be popped up and request you to enter user name and password. The default user name and password is as follows.  
User Name: Admin  
Password: 1234  
Enter the default user name and password, then press **OK** button directly.



4. You can start configuring the Access Point.

### From Wireless Station

1. Make sure your wireless station is in the same subnet with the Access Point. Please refer to the **step 1** above for configuring the IP Address and Sub Mask of the wireless station.

2. Connect to the Access Point.

The Access Point's ESSID is “**default**” and the WEP Encryption function is disabled. Make sure your wireless station is using the same ESSID as the Access Point and associate your wireless station to the Access Point.

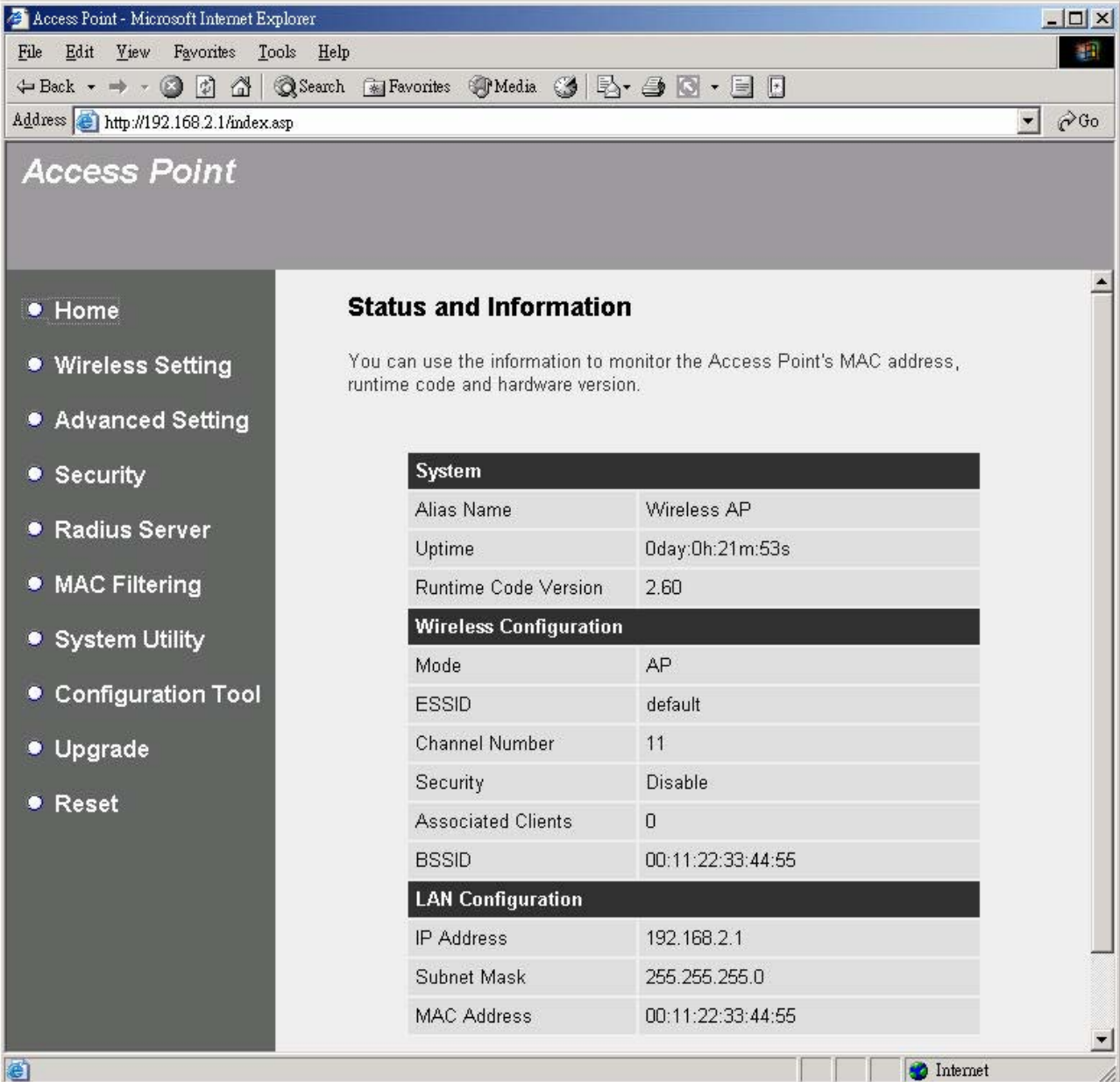
3. Enter **192.168.2.1** from Web Browser to get into the Access Point's configuration tool.

4. Enter the user name and password and then press **OK** button and you are available to configure the Access Point now.

## 3.2 Configuring the Access Point

### 3.2.1 Status and Information

On this screen, you can see the general information of the Access Point including Alias Name, Firmware Version, ESSID, Channel Number, Status, IP Address, MAC Address, etc.



**Access Point**

- Home
- Wireless Setting
- Advanced Setting
- Security
- Radius Server
- MAC Filtering
- System Utility
- Configuration Tool
- Upgrade
- Reset

### Status and Information

You can use the information to monitor the Access Point's MAC address, runtime code and hardware version.

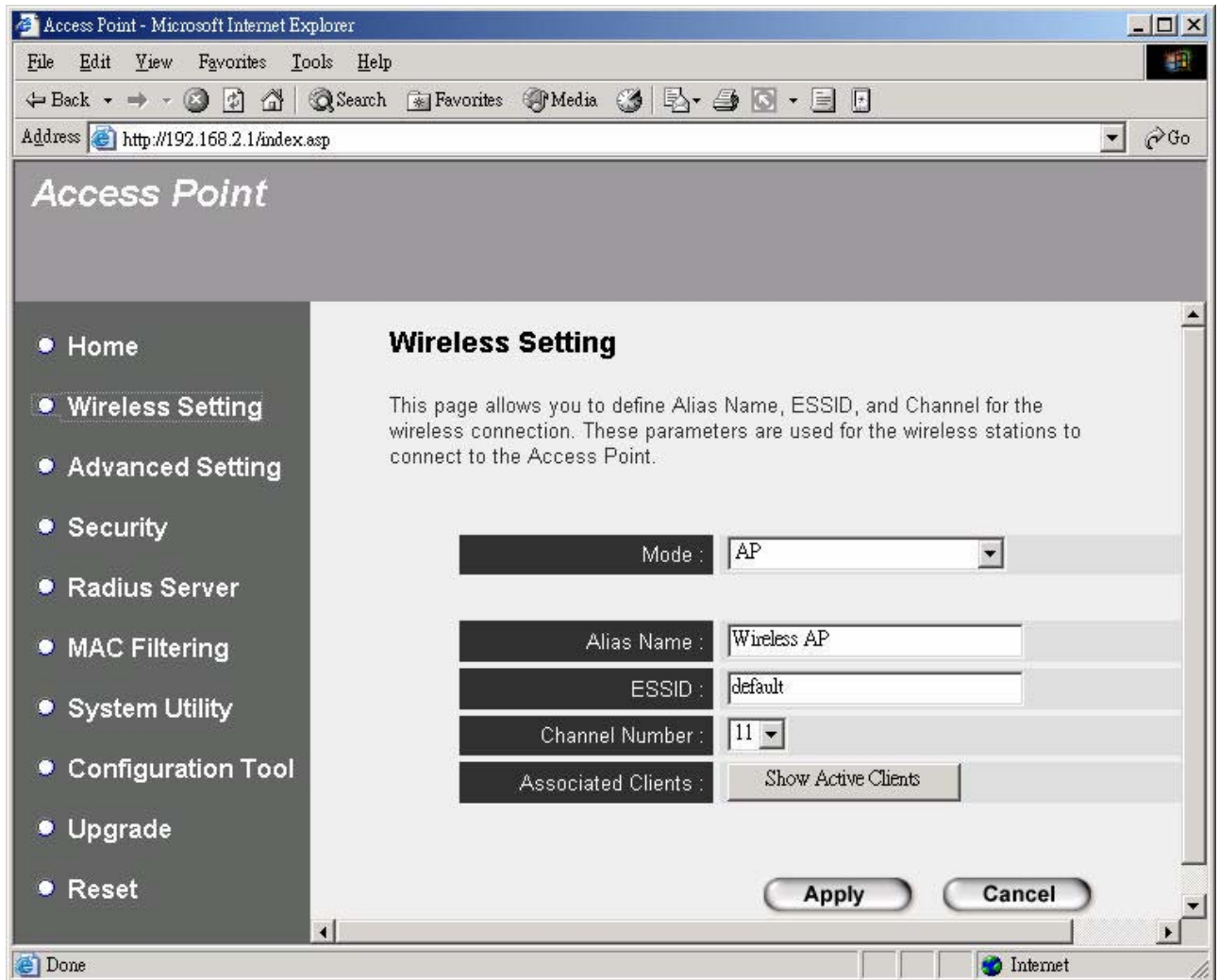
System	
Alias Name	Wireless AP
Uptime	0day:0h:21m:53s
Runtime Code Version	2.60

Wireless Configuration	
Mode	AP
ESSID	default
Channel Number	11
Security	Disable
Associated Clients	0
BSSID	00:11:22:33:44:55

LAN Configuration	
IP Address	192.168.2.1
Subnet Mask	255.255.255.0
MAC Address	00:11:22:33:44:55

### 3.2.2 Wireless Setting

This Access Point supports AP, Station, Bridge and WDS modes. “AP Mode” provides pure access point function. The simplest way to build up a wireless LAN is to use “AP Mode”. “Station Mode” is used to let a network device with only wired Ethernet function to have wireless LAN communication capability. It provides both Ad Hoc and Infrastructure modes for the “Station Mode”. With “Station-Ad Hoc mode”, it can let your network device join a wireless LAN with peer-to-peer communication. With “Station-Infrastructure mode”, it can let your network device join a wireless LAN through an access point. “AP Bridge Mode” provides the function to bridge more than 2 wired Ethernet networks together by wireless LAN. You can use two access points with “AP Bridge-Point to Point mode” to bridge two wired Ethernet networks together. If you want to bridge more than two wired Ethernet networks together, you have to use enough access points with “AP Bridge-Point to Multi-Point mode”. An access point with “AP Bridge-Point to Point mode” or “AP Bridge-Point to Multi-Point mode” can only be used to bridge wired Ethernet networks together. It can't accept connection from other wireless station at the same time. If you want an access point to bridge wired Ethernet network and provide connection service for other wireless station at the same time, you have to set the access point to “AP Bridge-WDS mode”. Simply speaking, “AP Bridge-WDS mode” function is the combination of “AP mode” and “AP Bridge-Point to Multi-Point mode”.

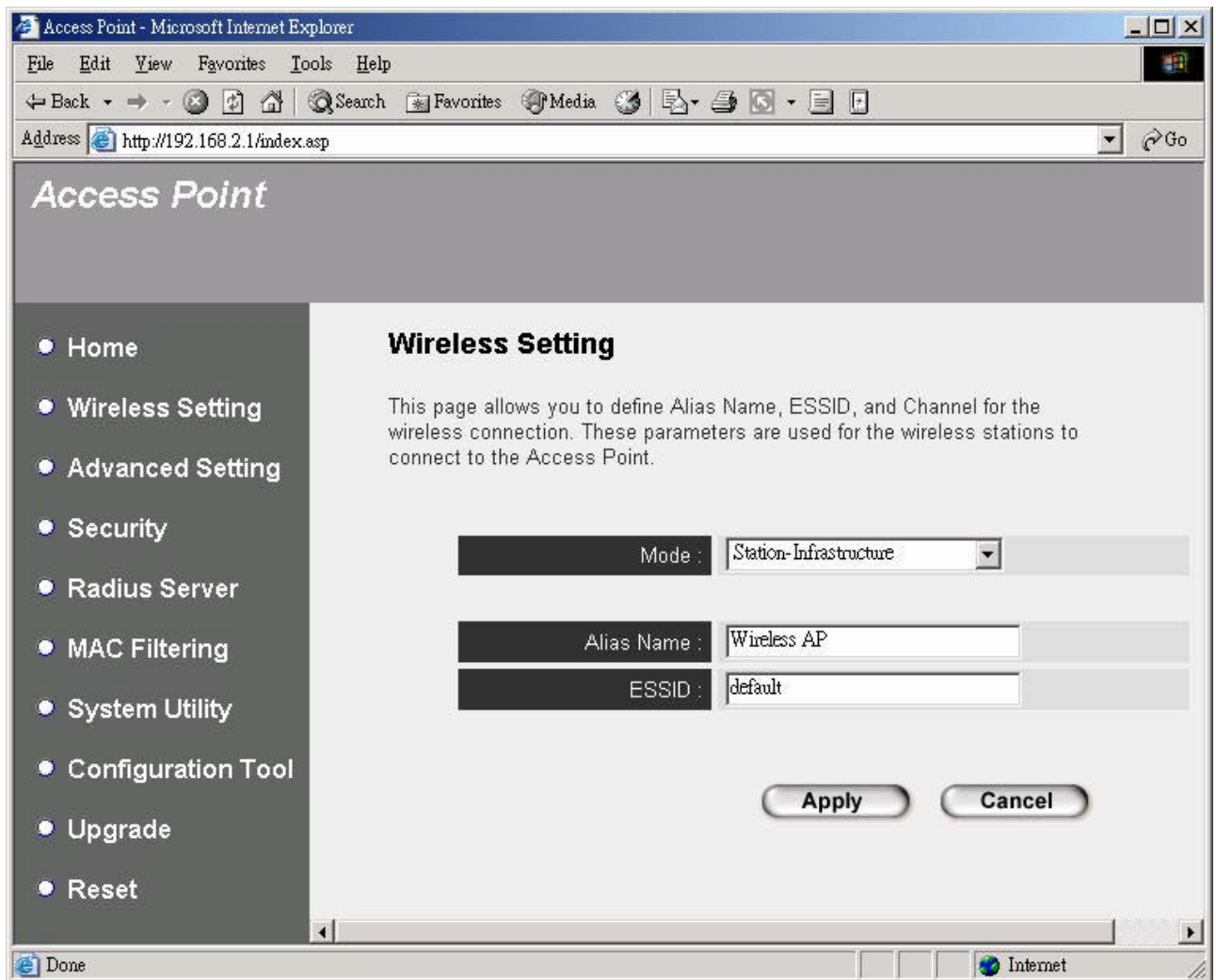
**AP mode setting page:**

**Station-Ad Hoc mode setting page:**

The screenshot shows a web browser window titled "Access Point - Microsoft Internet Explorer". The address bar displays "http://192.168.2.1/index.asp". The page content is titled "Access Point" and features a navigation menu on the left with the following items: Home, Wireless Setting, Advanced Setting, Security, Radius Server, MAC Filtering, System Utility, Configuration Tool, Upgrade, and Reset. The "Wireless Setting" page is active, displaying the following configuration options:

- Mode :** Station-Ad Hoc (dropdown menu)
- Alias Name :** Wireless AP (text input field)
- ESSID :** default (text input field)
- Channel Number :** 11 (dropdown menu)

At the bottom right of the configuration area, there are two buttons: "Apply" and "Cancel". The browser's status bar at the bottom shows "Done" and "Internet".

**Station-Infrastructure mode setting page:**



**AP Bridge-Point to Point mode setting page:**

Access Point - Microsoft Internet Explorer

File Edit View Favorites Tools Help

Back Forward Stop Home Search Favorites Media Print Refresh

Address <http://192.168.2.1/index.asp> Go

## Access Point

- Home
- Wireless Setting**
- Advanced Setting
- Security
- Radius Server
- MAC Filtering
- System Utility
- Configuration Tool
- Upgrade
- Reset

### Wireless Setting

This page allows you to define Alias Name, ESSID, and Channel for the wireless connection. These parameters are used for the wireless stations to connect to the Access Point.

Mode : AP Bridge-Point to Point

Channel Number : 11

MAC Address : 000000000000

Apply Cancel

Done Internet

**AP Bridge-Point to Multi-Point mode setting page:**

Access Point - Microsoft Internet Explorer

File Edit View Favorites Tools Help

Back Forward Stop Home Search Favorites Media Print Refresh

Address <http://192.168.2.1/index.asp> Go

## Access Point

- Home
- Wireless Setting**
- Advanced Setting
- Security
- Radius Server
- MAC Filtering
- System Utility
- Configuration Tool
- Upgrade
- Reset

### Wireless Setting

This page allows you to define Alias Name, ESSID, and Channel for the wireless connection. These parameters are used for the wireless stations to connect to the Access Point.

Mode : AP Bridge-Point to Multi-Point

Channel Number : 11

MAC Address 1 : 000000000000

MAC Address 2 : 000000000000

MAC Address 3 : 000000000000

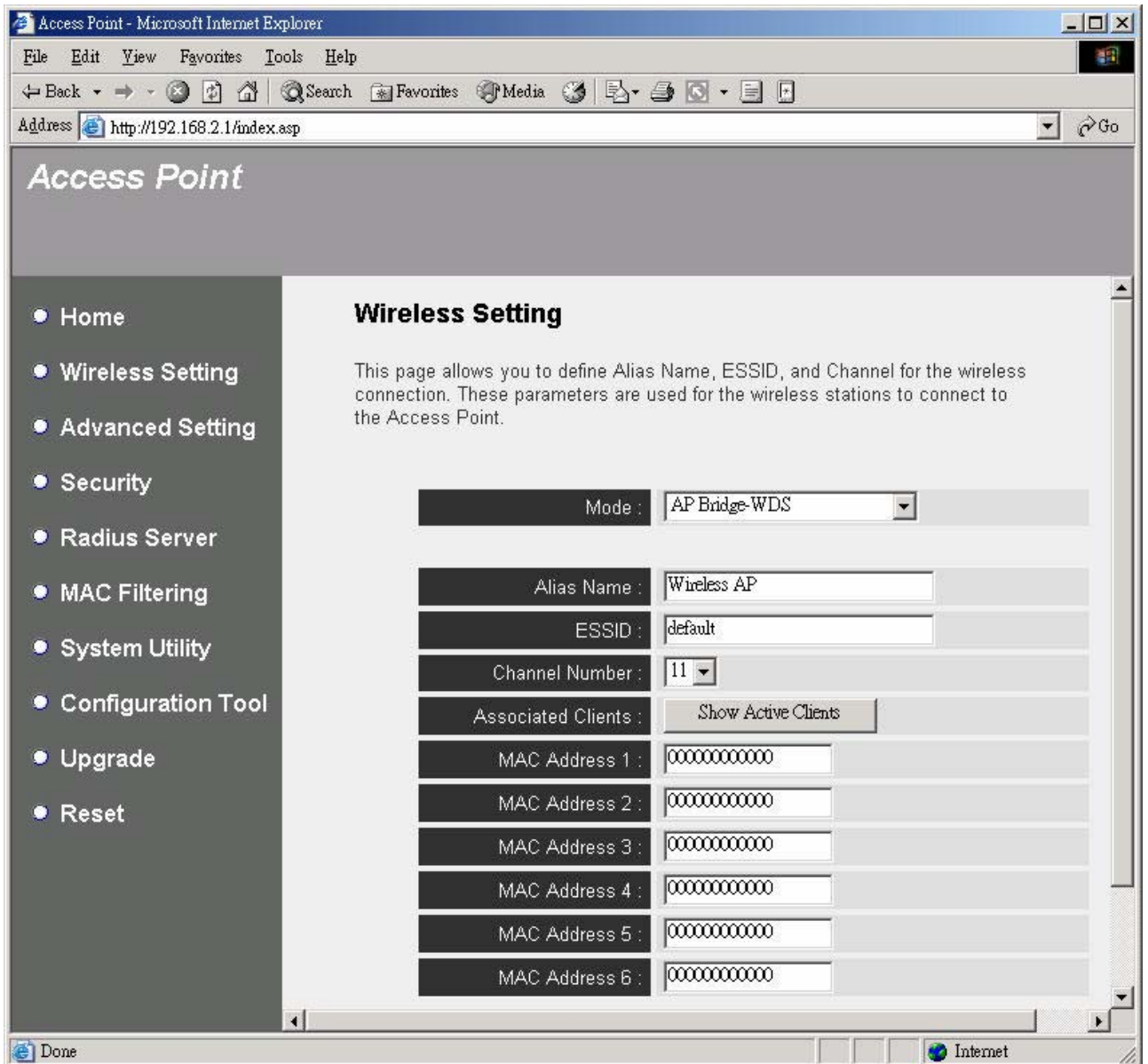
MAC Address 4 : 000000000000

MAC Address 5 : 000000000000

MAC Address 6 : 000000000000

Apply Cancel

Done Internet

**AP Bridge-WDS mode setting page:**

Parameter	Description
Alias Name	The alias name of this access point. You should assign Alias Name in “AP mode”, “Station-Ad Hoc mode”, “Station-Infrastructure mode” and “AP Bridge-WDS mode”.
ESSID	The ESSID (up to 31 printable ASCII characters) is the unique name identified in a WLAN. The ID prevents the unintentional merging of two co-located WLANs. Please make sure that the ESSID of all stations in

the same WLAN network are the same. The default ESSID is “**default**”. You should assign Alias Name in “AP mode”, “Station-Ad Hoc mode”, “Station-Infrastructure mode” and “AP Bridge-WDS mode”.

### Channel Number

Select the appropriate channel from the list provided to correspond with your network settings. Channels differ from country to country.

Channel 1-11 (North America)

Channel 1-14 (Japan)

Channel 1-13 (Europe)

There are 14 channels available.

You should assign Alias Name in “AP mode”, “Station-Ad Hoc mode”, “AP Bridge-Point to Point mode”, “AP Bridge-Point to Multi-Point mode” and “AP Bridge-WDS mode”.

### MAC Address

If you want to bridge more than one wired Ethernet networks together with wireless LAN, you have to set this access point to “AP Bridge-Point to Point mode”, “AP Bridge-Point to Multi-Point mode” or “AP Bridge-WDS mode”. You have to enter the MAC addresses of other access points that join the bridging work.

### Associated Clients

Click “Show Active Clients” button, then an “Active Wireless Client Table” will pop up. You can see the status of all active wireless stations that are connecting to the access point.

### Wireless Site Survey

When you use this access point as a wireless station for wired network device to have wireless capability, you have to associate it will an working access point. Click “Select Site Survey” button, then a “Wireless Site Survey Table” will pop up. It will list all available access points near by. You can select one access point in the table and it will join wireless LAN through this access point.

---

Click **Apply** button at the bottom of the screen to save the above configurations. You can now configure other advance sections or start using the Access Point.

## Active Wireless Client Table

“Active Wireless Client Table” records the status of all active wireless stations that are connecting to the access point. You can lookup the MAC Address, Number of Transmitted Packets, Number of Received Packets and Encryption Status of each active wireless client in this table.

**Active Wireless Client Table**

This table shows the MAC address, transmission, reception packet counters and encrypted status for each associated wireless client.

MAC Address	Tx Packet	Rx Packet	Tx Rate (Mbps)	Power Saving	Expired Time (s)
None	---	---	---	---	---

Refresh Close

Parameter	Description
MAC Address	MAC address of this active wireless station.
Tx Packet	The number of transmitted packets that are sent out from this active wireless station.
Rx Packet	The number of received packets that are received by this active wireless station.
TX Rate	The transmission rate in Mbps.
Power Saving	Shows if the wireless client is in Power Saving mode.

**Expired Time**                      The time in second before dissociation. If the wireless keeps idle long than the expired time, this access point will dissociate it. The wireless client station has to associate again when it become active.

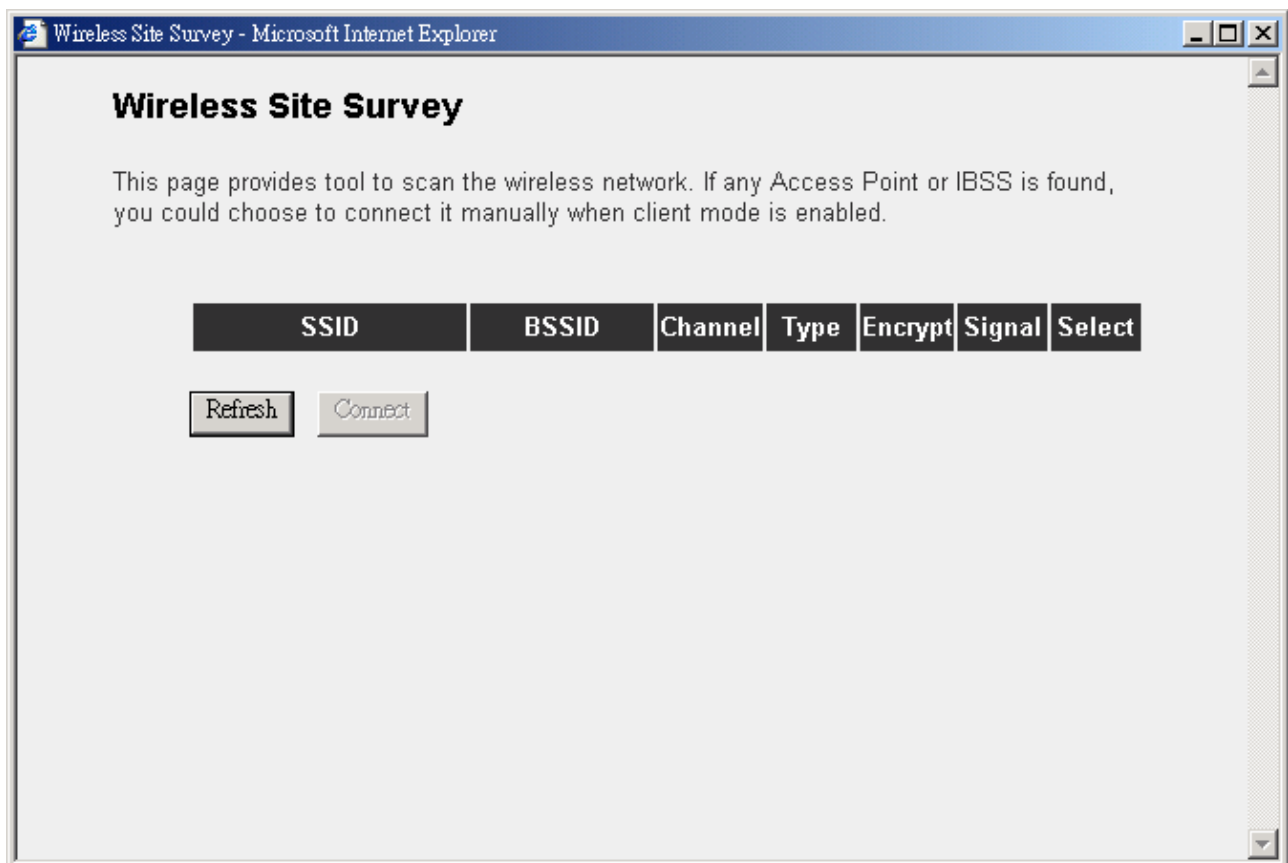
**Refresh**                              Refresh the “ Active Wireless Client Table”.

**Close**                                 Refresh the “ Active Wireless Client Table”.

---

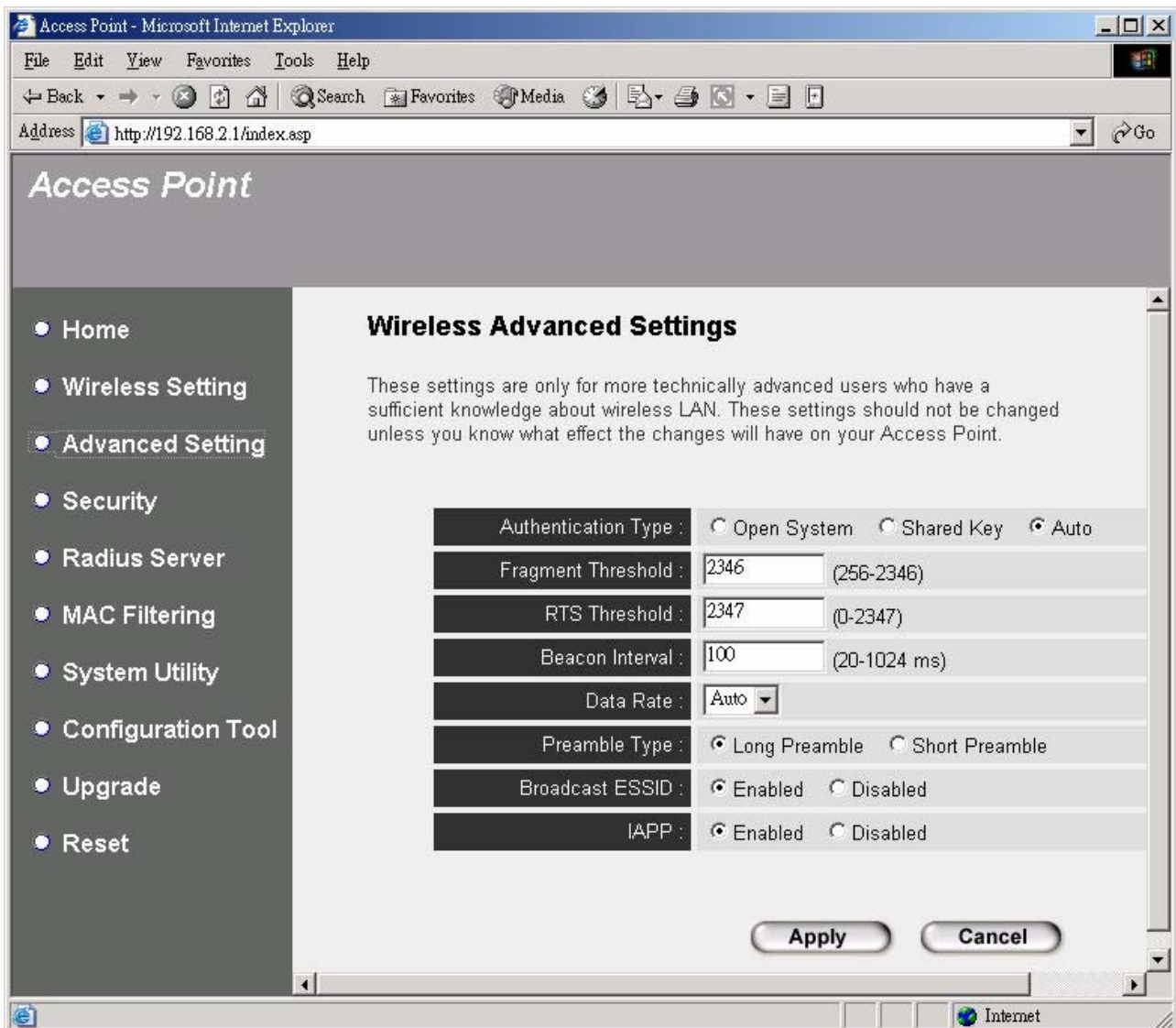
## Wireless Site Survey

When this access point is in “Station-Ad Hoc mode” or “Station-Infrastructure mode”, it should associate with an access point and connect to your wireless LAN through the associated access point. “Wireless Site Survey” searches for all available access points near by. You can select one access point listed in this table.



### 3.2.3 Advanced Setting

You can set advanced parameters of this access point. The parameters include Authentication Type, Fragment Threshold, RTS Threshold, Beacon Interval, Tx Operation Rate, Tx Basic Rate, Preamble Type, Broadcast ESSID. You should not change these parameters unless you know what effect the changes will have on this access point.



Parameter	Description
Authentication Type	There are two authentication types: "Open System" and "Shared Key". When you select "Open System", wireless stations can associate with this access point without WEP encryption. When you select "Shared

Key”, you should also setup WEP key in the “Encryption” page and wireless stations should use WEP encryption in the authentication phase to associate with this access point. If you select “Both”, the wireless client can associate with this access point by using any one of these two authentication types.

**Fragment Threshold** “Fragment Threshold” specifies the maximum size of packet during the fragmentation of data to be transmitted. If you set this value too low, it will result in bad performance.

**RTS Threshold** When the packet size is smaller the RTS threshold, the access point will not use the RTS/CTS mechanism to send this packet.

**Beacon Interval** The interval of time that this access point broadcast a beacon. Beacon is used to synchronize the wireless network.

**Data Rate** The “Data Rate” is the rate this access point uses to transmit data packets. The access point will use the highest possible selected transmission rate to transmit the data packets.

**Preamble Type** Preamble type defines the length of CRC block in the frames during the wireless communication. “Short Preamble” is suitable for high traffic wireless network. “Long Preamble” can provide more reliable communication.

**Broadcast ESSID** If you enable “Broadcast ESSID”, every wireless station located within the coverage of this access point can discover this access point easily. If you are building a public wireless network, enabling this feature is recommended. Disabling “Broadcast ESSID” can provide better security.

**IAPP** If you enable “IAPP”, the access point will automatically broadcast information of associated wireless stations to its neighbors. This will help wireless station roaming smoothly between access points. If you have more than one access points in your wireless LAN and wireless stations have roaming requirements, enabling this feature is recommended. Disabling “IAPP” can provide better security.

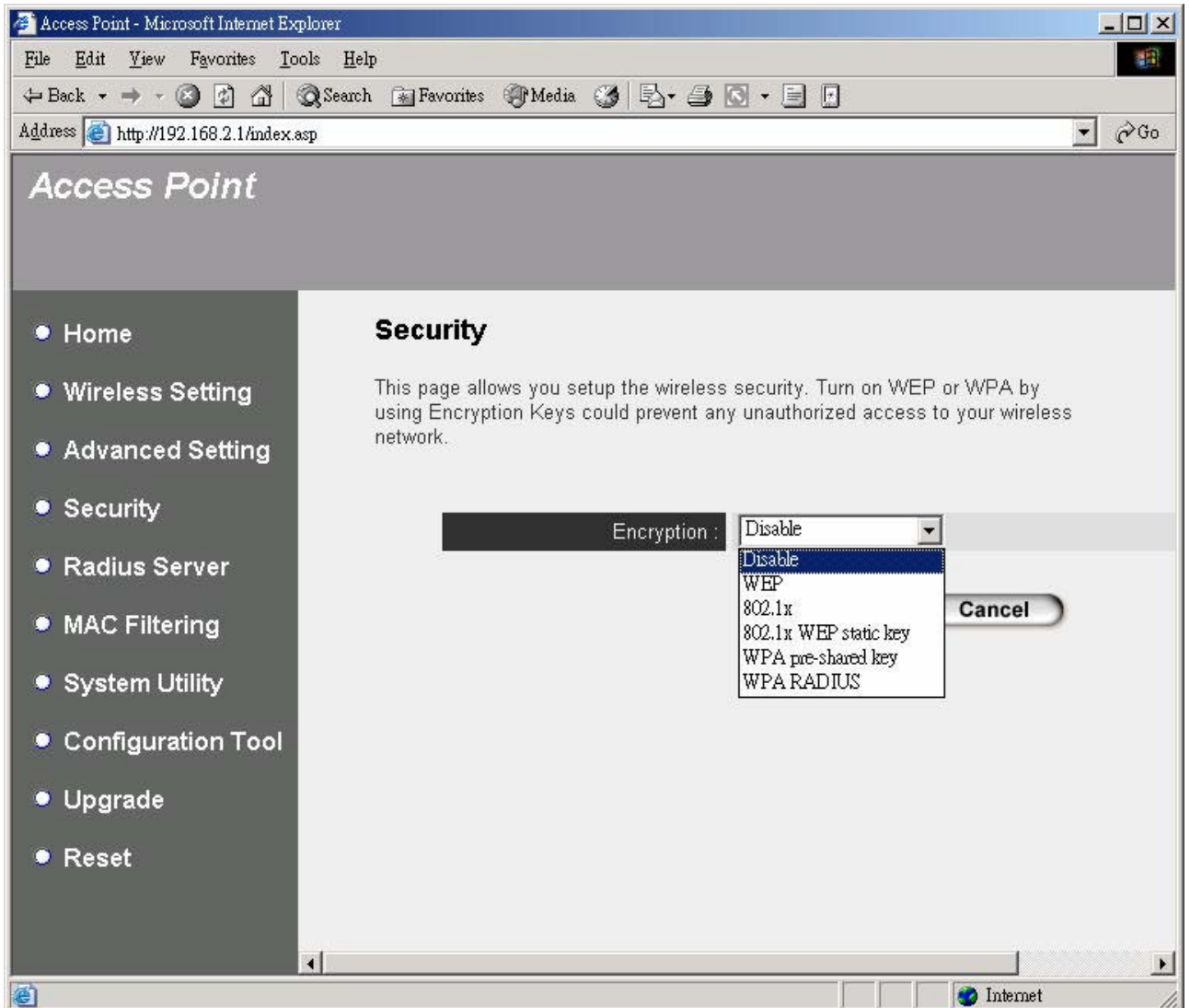
---



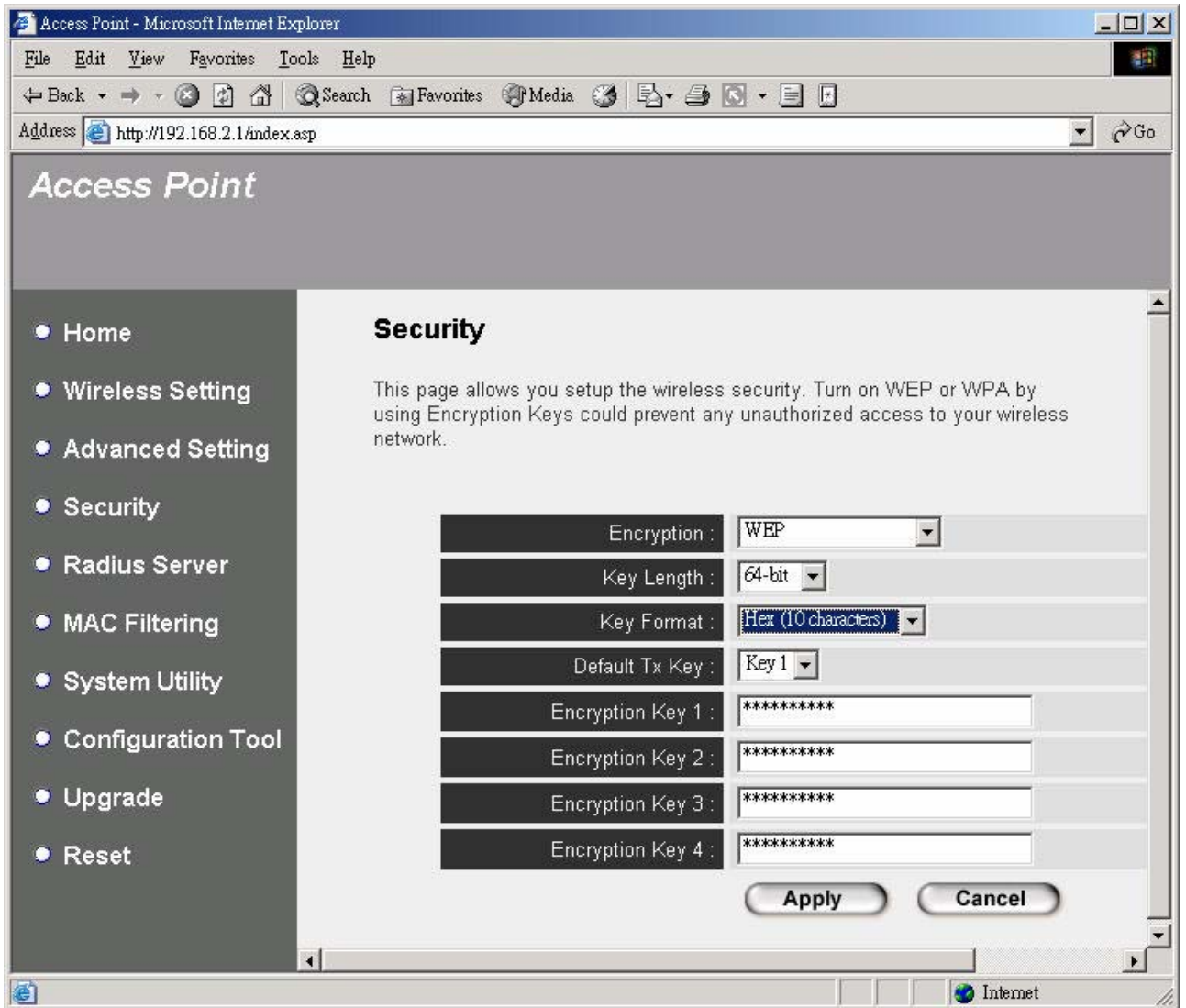
Click **Apply** button at the bottom of the screen to save the above configurations. You can now configure other advance sections or start using the Access Point.

### 3.2.4 Security

WEP is an authentication algorithm, which protects authorized Wireless LAN users against eavesdropping. The Authentication type and WEP key of wireless stations must be the same with the Access Point. This Access Point supports 64/128-bit WEP Encryption function. With this function, your data will be transmitted over the wireless network securely.



Parameter	Description
WEP Mode	You can select the 64-bit or 128-bit to encrypt transmitted data. Larger WEP key length will provide higher level of security, but the throughput will be lower. You also can select <b>Disable</b> to transmit data without encryption.



Parameter	Description
Key Format	You may select to select ASCII Characters (alphanumeric format) or Hexadecimal Digits (in the “A-F”, “a-f” and “0-9” range) to be the WEP Key. For example: ASCII Characters: guest Hexadecimal Digits: 12345abcde
Key Length	You may disable or enable the WEP function from the setting item. The selections in the setting item are changed based on the key format.

**Key 1 - Key 4**

The WEP keys are used to encrypt data transmitted in the wireless network. Fill the text box by following the rules below.

64-bit WEP: input 10-digit Hex values (in the "A-F", "a-f" and "0-9" range) or 5-digit ASCII character as the encryption keys.

128-bit WEP: input 26-digit Hex values (in the "A-F", "a-f" and "0-9" range) or 10-digit ASCII characters as the encryption keys.

**Default Key**

Select one of the four keys to encrypt your data. Only the key you select it in the "Default key" will take effect.

Click **Apply** button at the bottom of the screen to save the above configurations. You can now configure other advance sections or start using the Access Point.

Access Point - Microsoft Internet Explorer

File Edit View Favorites Tools Help

Back Forward Stop Home Search Favorites Media Print

Address <http://192.168.2.1/index.asp> Go

## Access Point

- Home
- Wireless Setting
- Advanced Setting
- Security
- Radius Server
- MAC Filtering
- System Utility
- Configuration Tool
- Upgrade
- Reset

### Security

This page allows you setup the wireless security. Turn on WEP or WPA by using Encryption Keys could prevent any unauthorized access to your wireless network.

Encryption : 802.1x

Use internal MD5 RADIUS Server

RADIUS Server IP address :

RADIUS Server Port : 1812

RADIUS Server Password :

Apply Cancel

Done Internet

Access Point - Microsoft Internet Explorer

File Edit View Favorites Tools Help

Back Forward Stop Home Search Favorites Media Print Mail

Address <http://192.168.2.1/index.asp> Go

## Access Point

- Home
- Wireless Setting
- Advanced Setting
- Security
- Radius Server
- MAC Filtering
- System Utility
- Configuration Tool
- Upgrade
- Reset

### Security

This page allows you setup the wireless security. Turn on WEP or WPA by using Encryption Keys could prevent any unauthorized access to your wireless network.

Encryption :	802.1x WEP static key ▾
Key Length :	64-bit ▾
Key Format :	Hex (10 characters) ▾
Default Tx Key :	Key 1 ▾
Encryption Key 1 :	*****
Encryption Key 2 :	*****
Encryption Key 3 :	*****
Encryption Key 4 :	*****

Use internal MD5 RADIUS Server

RADIUS Server IP address :	
RADIUS Server Port :	1812
RADIUS Server Password :	

Apply Cancel

Done Internet

Access Point - Microsoft Internet Explorer

File Edit View Favorites Tools Help

Back Forward Stop Home Search Favorites Media Print Refresh

Address <http://192.168.2.1/index.asp> Go

## Access Point

- Home
- Wireless Setting
- Advanced Setting
- Security
- Radius Server
- MAC Filtering
- System Utility
- Configuration Tool
- Upgrade
- Reset

### Security

This page allows you setup the wireless security. Turn on WEP or WPA by using Encryption Keys could prevent any unauthorized access to your wireless network.

Encryption : WPA pre-shared key

WPA Unicast Cipher Suite :  TKIP  AES

Pre-shared Key Format : Passphrase

Pre-shared Key :

Apply Cancel

Internet

The screenshot shows a Microsoft Internet Explorer browser window titled "Access Point - Microsoft Internet Explorer". The address bar displays "http://192.168.2.1/index.asp". The page content is titled "Access Point" and features a navigation menu on the left with the following items: Home, Wireless Setting, Advanced Setting, Security, Radius Server, MAC Filtering, System Utility, Configuration Tool, Upgrade, and Reset. The "Security" section is active and contains the following text: "This page allows you setup the wireless security. Turn on WEP or WPA by using Encryption Keys could prevent any unauthorized access to your wireless network." Below this text are several configuration fields: "Encryption" is set to "WPA RADIUS"; "WPA Unicast Cipher Suite" has "TKIP" checked and "AES" unchecked; "RADIUS Server IP address" is an empty text box; "RADIUS Server Port" is set to "1812"; and "RADIUS Server Password" is an empty text box. At the bottom of the form are "Apply" and "Cancel" buttons. The browser's status bar at the bottom shows "Done" and "Internet".

**Access Point**

- Home
- Wireless Setting
- Advanced Setting
- Security**
- Radius Server
- MAC Filtering
- System Utility
- Configuration Tool
- Upgrade
- Reset

### Security

This page allows you setup the wireless security. Turn on WEP or WPA by using Encryption Keys could prevent any unauthorized access to your wireless network.

Encryption : WPA RADIUS

WPA Unicast Cipher Suite :  TKIP  AES

RADIUS Server IP address :

RADIUS Server Port : 1812

RADIUS Server Password :

**Apply** **Cancel**

Done Internet



**Access Point**

- Home
- Wireless Setting
- Advanced Setting
- Security
- Radius Server**
- MAC Filtering
- System Utility
- Configuration Tool
- Upgrade
- Reset

### Radius Server

This page allows you to set the internal Radius Server (EAP-MD5). This server can be used as the Authentication server of other wireless devices.

Enable Radius Server

Users Profile (up to 96 users)

Username	Password	Re-Type Password	Configure
<input type="text"/>	<input type="text"/>	<input type="text"/>	Add Reset
Username			Select
Delete Selected			Delete All Reset

Authentication Client (up to 16 clients)

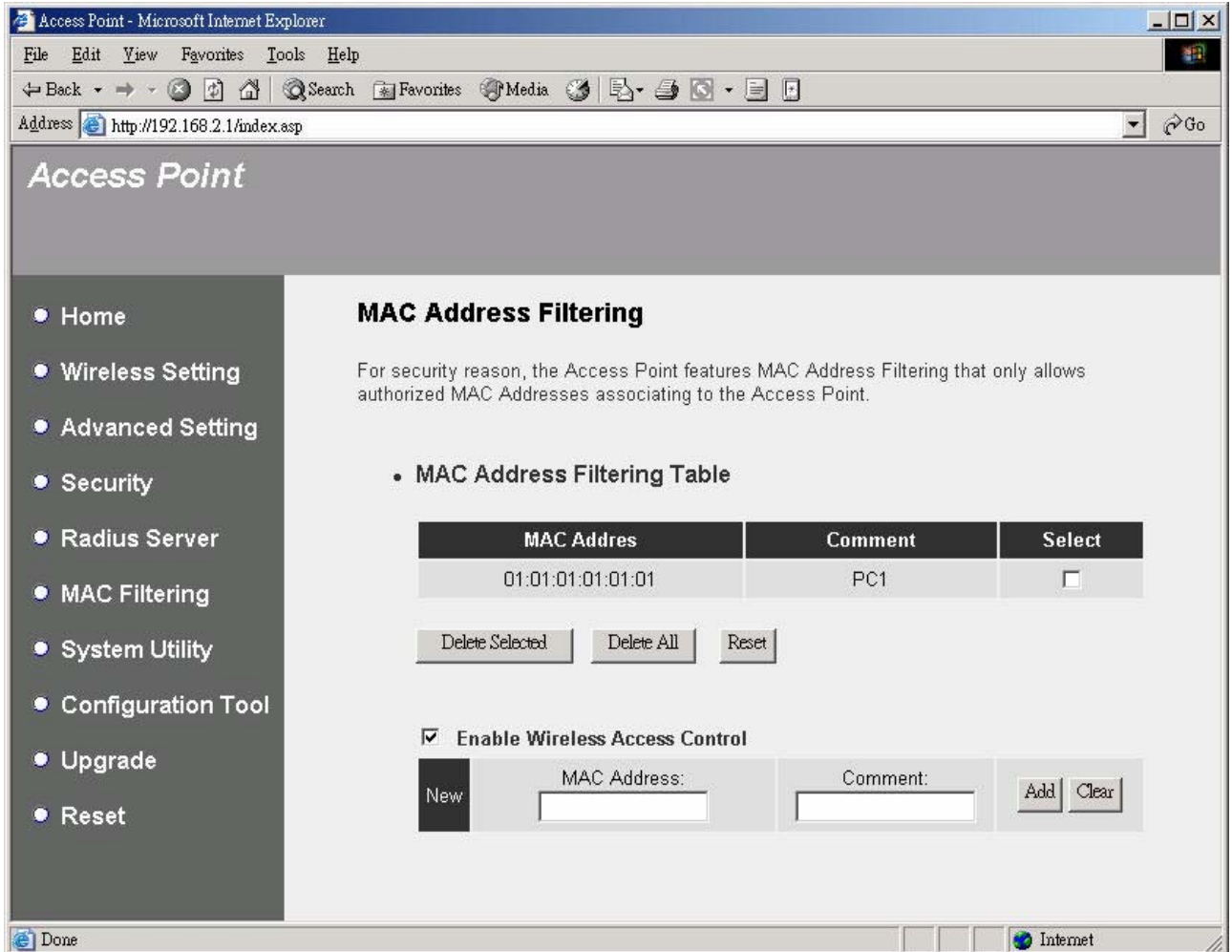
Client IP	Secret Key	Re-Type Secret Key	Configure
<input type="text"/>	<input type="text"/>	<input type="text"/>	Add Reset
Client IP			Select
Delete Selected			Delete All Reset

Done Internet



### 3.2.5 MAC Address Filtering

This Access Point provides MAC Address Filtering, which prevents the unauthorized MAC Addresses from accessing your wireless network.



Parameter	Description
Filtering	Enable or disable the MAC Address Filtering function.
MAC Address Filtering Table	This table records the MAC addresses of wireless stations you want to allow to access your network. The “Comment” field is the description of the wireless station associated with the “MAC Address” and is helpful for you to recognize the wireless station.
Add MAC address into the table	In the bottom “New” area, fill in the “MAC Address” and “Comment” of the wireless station to be added and then click “Add”. Then this wireless

station will be added into the “MAC Address Filtering Table” above. If you find any typo before adding it and want to retype again. Just click “Clear” and both “MAC Address” and “Comment” fields will be cleared.

**Remove MAC address from the table** If you want to remove some MAC address from the “MAC Address Filtering Table”, select the MAC addresses you want to remove in the table and then click “Delete Selected”. If you want remove all MAC addresses from the table, just click “Delete All” button.

**Reset** Click “Reset” will clear your current selections.

---

Click **Apply** button at the bottom of the screen to save the above configurations. You can now configure other advance sections or start using the Access Point.

### 3.2.6 System Utility

From here, you can define the Access Point's IP Address and Login Password and enable the Access Point to be a DHCP Server.

**Access Point**

- Home
- Wireless Setting
- Advanced Setting
- Security
- Radius Server
- MAC Filtering
- System Utility**
- Configuration Tool
- Upgrade
- Reset

#### System Utility

Enter the IP Address of the Access Point. If you want to use DHCP server service, you should enter a unique IP for the Access Point.

- Password Settings**
  - Current Password :
  - New Password :
  - Re-Enter Password :
- Management IP**
  - IP Address :
  - Subnet Mask :
  - DHCP Server :
- DHCP Server**
  - Default Gateway IP :
  - Domain Name Server IP :
  - Start IP :
  - End IP :
  - Domain Name :
  - Lease Time :

Parameter	Description
Current Password	Enter the current password (up to 15-digit alphanumeric string) of the

Access Point. The default password for the Access Point is **1234**. Note that the password is case-sensitive.

**New Password** Enter the password (up to 15-digit alphanumeric string) you want to login to the Access Point. Note that the password is case-sensitive.

**Re-Enter Password** Reconfirm the password (up to 15-digit alphanumeric string) you want to login to the Access Point. Note that the password is case-sensitive.

**IP Address** Designate the Access Point's IP Address. This IP Address should be unique in your network. The default IP Address is **192.168.2.1**.

**Subnet Mask** Specify a Subnet Mask for your LAN segment. The Subnet Mask of the Access Point is fixed and the value is **255.255.255.0**.

**DHCP Server** Enable or disable the DHCP Server.

---

Click **Apply** button at the bottom of the screen to save the above configurations. You can now configure other advance sections or start using the Access Point.

### 3.2.6.1 DHCP Server Setting

DHCP Server will automatically give your LAN client an IP address. If the DHCP is not enabled then you'll have to manually set your LAN client's IP address.

---

Parameter	Description
Default Gateway IP	Specify the gateway IP in your network. This IP address should be different from the Management IP.
Domain Name Server IP	This is the ISP's DNS server IP address that they gave you; or you can specify your own preferred DNS server IP address.
Start IP/End IP	You can designate a particular IP address range for your DHCP server to

issue IP addresses to your LAN Clients. By default the IP range is from: Start IP **192.168.2.100** to End IP **192.168.2.200**.

**Domain Name**

You can specify the Domain Name for your Access Point.

**Lease Time**

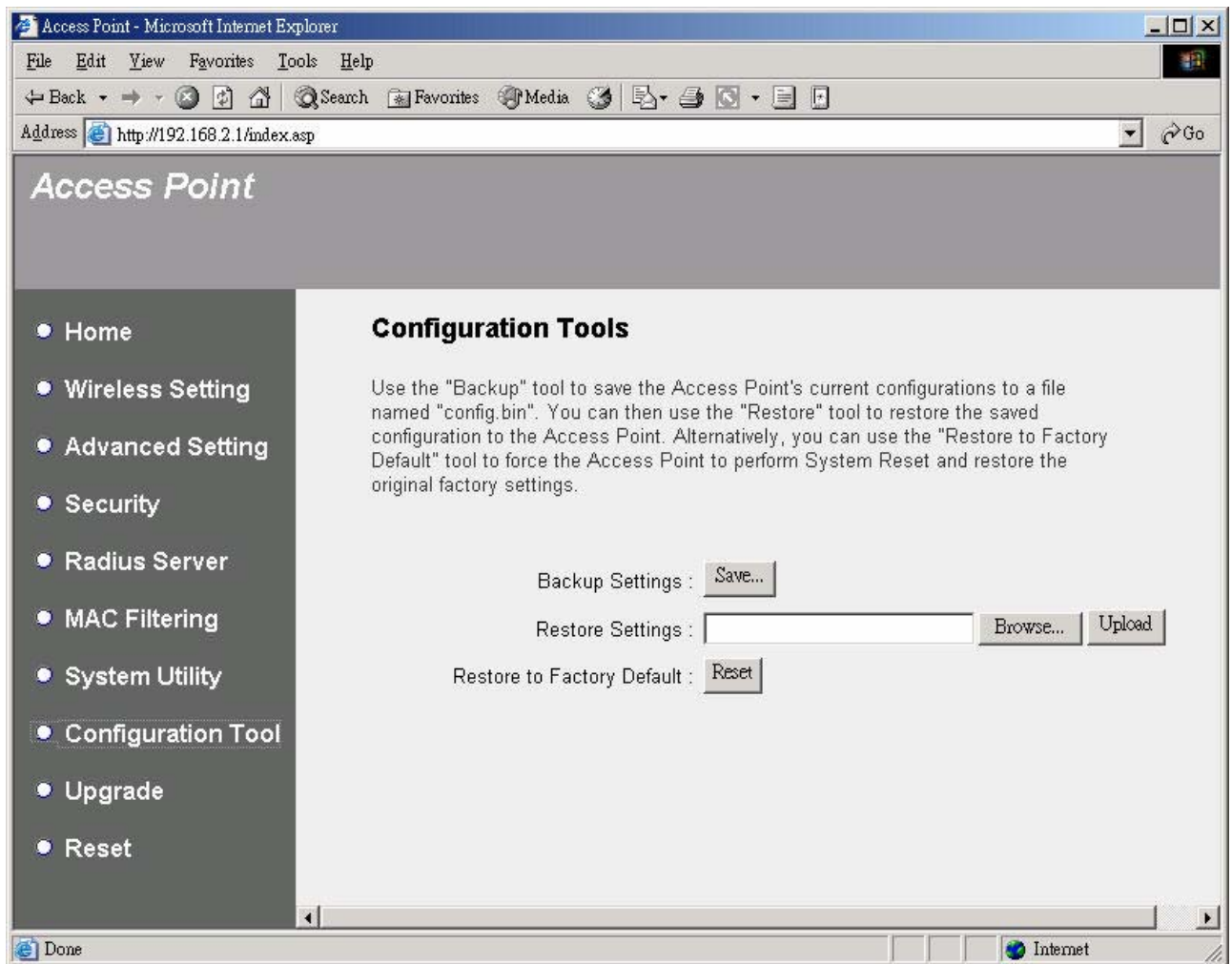
The DHCP Server when enabled will temporarily give your LAN client an IP address. In the Lease Time setting you can specify the time period that the DHCP Server lends an IP address to your LAN clients. The DHCP Server will change your LAN client' s IP address when this time threshold period is reached.

---

Click **Apply** button at the bottom of the screen to save the above configurations. You can now configure other advance sections or start using the Access Point.

### 3.2.7 Configuration Tool

The Configuration Tools screen allows you to save (**Backup**) the Access Point's current configuration setting. Saving the configuration settings provides an added protection and convenience should problems occur with the Access Point and you have to reset to factory default. When you save the configuration setting (Backup) you can re-load the saved configuration into the Access Point through the **Restore** selection. If extreme problems occur you can use the **Restore to Factory Default** selection, this will set all configurations to its original default settings (e.g. when you first purchased the Access Point).



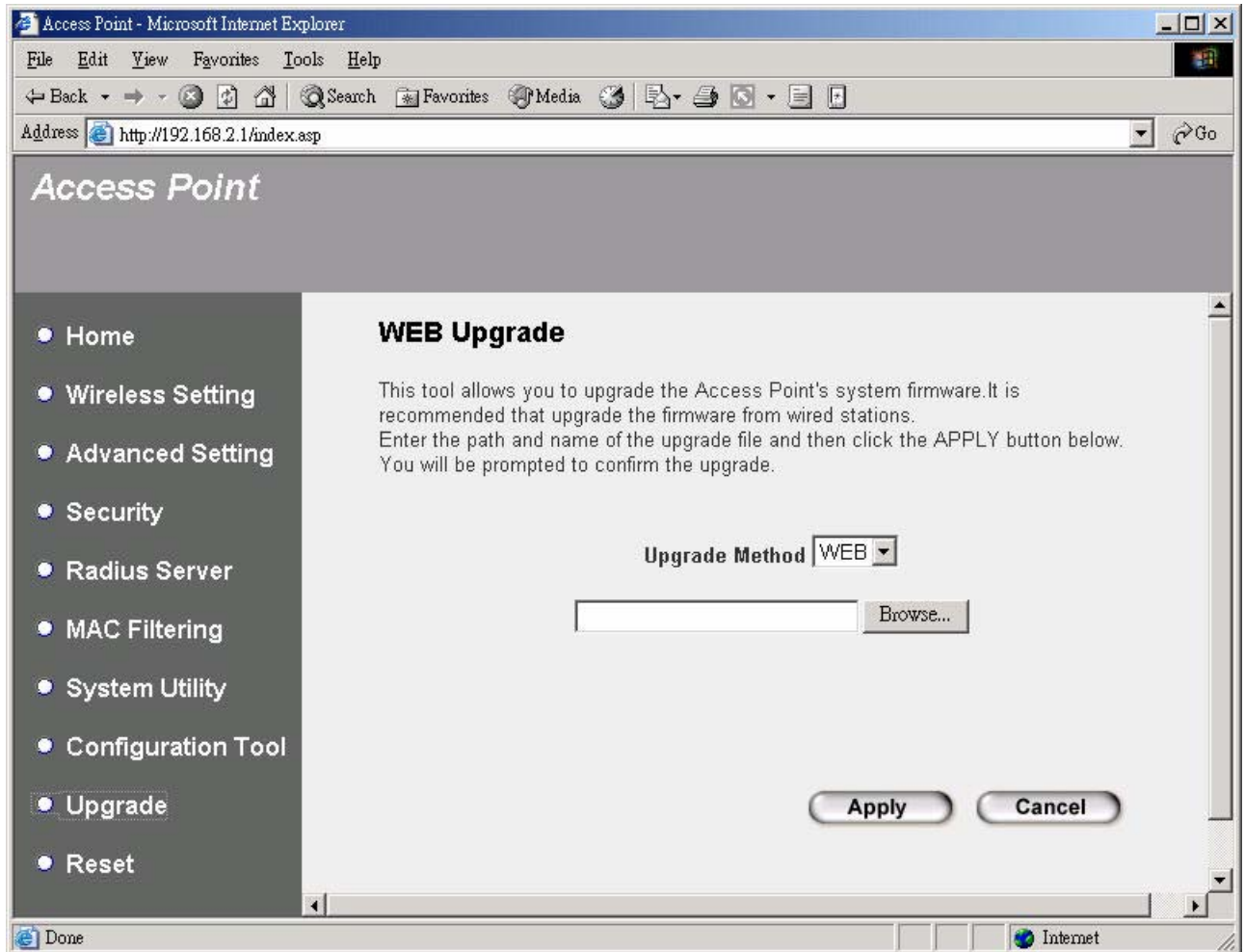
Parameter	Description
Configuration Tools	Use the <b>"Backup"</b> tool to save the Access Point's current configuration to a file named "config.bin" on your PC. You can then use the <b>"Restore"</b>

tool to upload and restore the saved configuration to the Access Point. Alternatively, you can use the "**Restore to Factory Default**" tool to force the Access Point to perform a power reset and restore the original factory settings.

---

### 3.2.8 Firmware Upgrade

This page allows you to upgrade the Access Point's firmware.



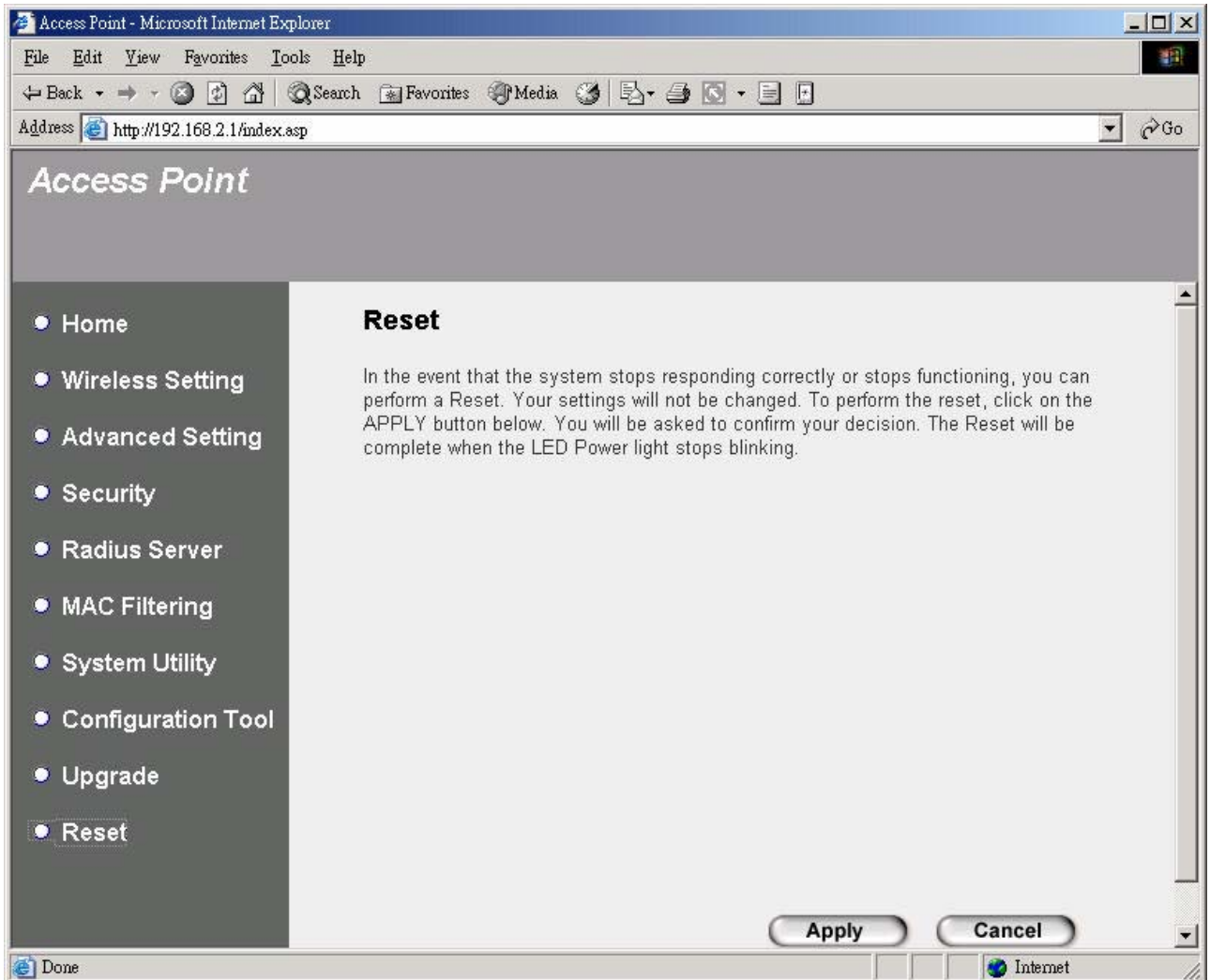
Parameter	Description
Firmware Upgrade	This tool allows you to upgrade the Access Point's system firmware. To upgrade the firmware of your Access Point, you need to download the firmware file to your local hard disk, and enter that file name and path in the appropriate field on this page. You can also use the <b>Browse</b> button to find the firmware file on your PC. Please reset the Access Point when the upgrade process is complete.

Once you've selected the new firmware file, click **Apply** button at the bottom of the screen to start the upgrade process. (You may have to wait a few minutes for the upgrade to complete). Once the upgrade is complete you can start using the Access Point.



### 3.2.9 Reset

You can reset the Access Point's system should any problem exist. The reset function essentially Re-boots your Access Point's system.



Parameter	Description
Reset	In the event that the system stops responding correctly or in some way stops functioning, you can perform a reset. <b>Your settings will not be changed.</b> To perform the reset, click on the <b>Apply</b> button. You will be asked to confirm your decision. Once the reset process is complete you may start using the Access Point again.

# Chapter 4 Troubleshooting

This chapter provides solutions to problems usually encountered during the installation and operation of the Access Point.

## 1. How to manually find your PC's IP and MAC Address?

- 1) In Windows, open the Command Prompt program
- 2) Type **ipconfig /all** and **Enter**
  - Your PC's IP address is the one entitled **IP address**
  - Your PC's MAC Address is the one entitled **Physical Address**

## 2. What is Ad-hoc?

An Ad-hoc wireless LAN is a group of computers, each with a WLAN adapter, connected as an independent wireless LAN.

## 3. What is Infrastructure?

An integrated wireless and wired LAN is called an Infrastructure configuration.

## 4. What is BSS ID?

A group of wireless stations and an Access Point compose a Basic Service Set (BSS). Computers in a BSS must be configured with the same BSSID.

## 5. What is ESSID?

An Infrastructure configuration could also support roaming capability for mobile workers. More than one BSS can be configured as an Extended Service Set (ESS). Users within an ESS could roam freely between BSSs while maintaining a continuous connection to the wireless network stations and the Wireless LAN Access Points.

## 6. Can data be intercepted while transmitting through the air?

WLAN features two-fold protection in security. On the hardware side, as with Direct Sequence Spread Spectrum technology, it has the inherent scrambling security feature. On the software side, the WLAN series offers the encryption function (WEP) to enhance security and access control.

**7. What is WEP?**

WEP stands for Wired Equivalent Privacy, a data privacy mechanism based on a 64(40)-bit shared key algorithm.

**8. What is a MAC Address?**

The Media Access Control (MAC) address is a unique number assigned by the manufacturer to any Ethernet networking device, such as a network adapter, that allows the network to identify it at the hardware level. For all practical purposes, this number is usually permanent. Unlike IP addresses, which can change every time a computer logs on to the network, the MAC address of a device stays the same, making it a valuable identifier for the network.

## Chapter 5 Warning Statement

### **Federal Communications Commission Requirements**

This equipment has been tested and found to comply with the limits for a class B digital device, pursuant to part 15 of the FCC Rules. These limits are designed to provide reasonable protection against harmful interference in a residential installation.

This equipment generates, uses and can radiate radio frequency energy and, if not installed and used in accordance with the instructions, may cause harmful interference to radio communications. However, there is no guarantee that interference will not occur in a particular installation. If this equipment does cause harmful interference to radio or television reception, which can be determined by turning the equipment off and on, the user is encouraged to try to correct the interference by one or more of the following measures:

- Reorient or relocate the receiving antenna.
- Increase the separation between the equipment and receiver.
- Connect the equipment into an outlet on a circuit different from that to which the receiver is connected.
- Consult the dealer or an experienced radio/TV technician for help.

### **Prohibition of co-location**

This device and its antenna(s) must not be co-located or operating in conjunction with any other antenna or transmitter.

### **Safety Information**

To maintain compliance with FCC's RF exposure guidelines, this equipment should be installed and operated with minimum distance 20cm between the radiator and your body. Use on the supplied antenna.

Caution:

Any changes or modifications not expressly approved by the party responsible for compliance could void the user's authority to operate the equipment.