

1 NOTES APPLICABLE TO PART MANUFACTURER:

- 1. DESCRIPTION AND APPLICATION: RETAIL BOX FOR WIRELESS COMMUNICATIONS DEVICE PACKAGING
- 2. APPLICABLE DOCUMENTS:
 - 2201237 REFERENCE ARTWORK
 - 2140122 SIERRA WIRELESS GENERIC COSMETIC SPECIFICATION
 - ASME Y14.5M-1994 GEOMETRIC DIMENSIONING AND TOLERANCING
- 3. MATERIAL:
 - 3.1 300 GSM COPPERPLATE PAPER / F-FLUTE CORRUGATED MEDIUM / WHITE PAPER LINER (1.50MM ± 0.15MM THK)
 - 3.2 THE PART/ASSEMBLY SHALL CONTAIN NO HAZARDOUS SUBSTANCES PER THE WASTE ELECTRICAL AND ELECTRONIC EQUIPMENT (WEEE) 2002/96/EC RoHS DIRECTIVE.
 - 3.3 THE PART/ ASSEMBLY SHALL CONFROM TO THE EU DIRECTIVE ON PACKAGING AND PACKAGING WASTE 94/62/EC

- 4. FINISH:
 - 4.1 GLOSSY PP LAMINATE
 - 4.2 REFER TO ARTWORK FILE 2201237 FOR GRAPHIC SPECIFICATIONS

- 5. GENERAL REQUIREMENTS:
 - 5.1 PARTS SHALL BE CLEAN AND FREE OF ALL FOREIGN MATTER.
 - 5.2 REFERENCE ARTWORK P/N 2201237.
 - 5.3 CONTROLLING GEOMETRY IS DEFINED BY DXF FILE DATABASE. ALL SURFACE TO BE WITHIN 0.10 OF DATABASE UNLESS OTHERWISE SPECIFIED.

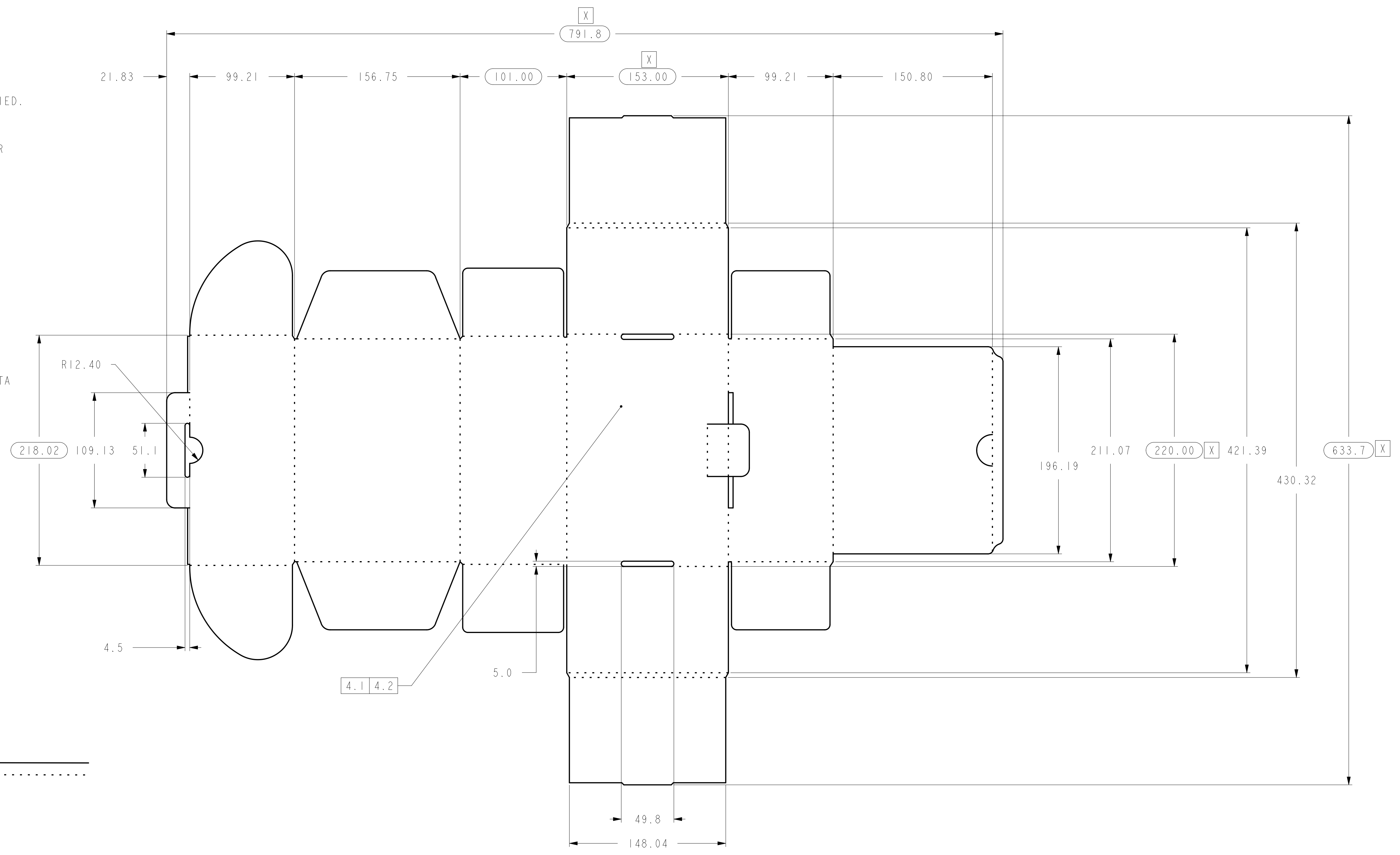
- 6. QUALITY ASSURANCE REQUIREMENTS:
 - 6.1 ALL DIMENSIONS INDICATED ON DRAWING ARE CRITICAL TO FORM, FIT, OR FUNCTION.
 - 6.2 DIMENSIONS INDICATED WITH A [X] SYMBOL DENOTE QUALITY PROCESS CONTROL, (QPC), DIMENSIONS.
 - 6.3 PRODUCTION LOT SAMPLES MUST DEMONSTRATE A Cpk VALUE OF 1.33 OR HIGHER. IF THE Cpk DROPS BELOW 1.33 AT ANY TIME DURING THE MANUFACTURE OF THIS PART, THEN THE SUPPLIER MUST 100% SCREEN ALL THOSE PARTS TO THOSE SPECIFIED CRITICAL PARAMETERS.
- 7.1 NO CHANGE SHALL BE ALLOWED ON PRODUCTION MATERIAL, REGARDLESS OF WHETHER SUCH CHANGE AFFECTS REQUIREMENTS SPECIFIED, WITHOUT PRIOR EXPLICIT WRITTEN APPROVAL BY SIERRA WIRELESS.

11 NOTES APPLICABLE TO CONTRACT MANUFACTURER:

- 1. INCOMING INSPECTION DIMENSION MARKED BY (XX.XX)
- 2. SAMPLE INSPECTION PER QE1-11-0000-18.
- 3. CONTRACT MANUFACTURER SHALL REQUIRE PART MANUFACTURER TO PROVIDE SPC DATA AND REVIEW WITH SIERRA WIRELESS.

REV	DESCRIPTION	DATE	DRAWN	APPD
1	RELEASED FOR PRODUCTION	07-MAR-11	BW	BG

<<CORRUGATE DIRECTION>>

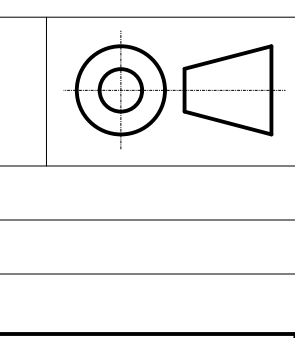


— LEGEND —
 CUT LINE —————
 SCORE LINE ·······

UNLESS OTHERWISE NOTED, THIS DOCUMENT CONTAINS SIERRA WIRELESS CONFIDENTIAL INFORMATION. REPRODUCTION, USE, DISCLOSURE OR TRANSMITTAL OF ALL OR ANY PORTION OF THIS DOCUMENT IS PROHIBITED, EXCEPT TO THE EXTENT APPROVED BY SIERRA WIRELESS. SIERRA WIRELESS EXPRESSLY RESERVES ALL RIGHTS UNDER PATENTS, TRADEMARKS, COPYRIGHTS AND TRADE SECRETS. COPYRIGHT (C) 2011, SIERRA WIRELESS.

UNLESS OTHERWISE SPECIFIED, DIMENSIONS ARE PER THE FOLLOWING TOLERANCES:

INCHES	MM	ANGLES
.X ± .04	X ± 1.0	X ± 2°
.XX ± .03	X.X ± 0.75	X.X ± 1.0°
.XXX ± .020	X.XX ± 0.50	



PROJECT NAME AC802S	DATE 16-FEB-11	PART DESCRIPTION RETAIL BOX, DESKTOP CRADLE, AC802S
DRAWN B. WU	CHECKED ATL TECHNOLOGY	13811 Wireless Way Richmond, British Columbia Canada, V6V 3A4 Tel: 604.231.1100 Fax: 604.231.1109
DATE 05-JAN-11	DATE 07-MAR-11	SIERRA WIRELESS HEART OF THE WIRELESS MACHINES
TITLE B. GILBERT	SIZE D	UNITS MM
FILE NUMBER 2201237	DRAWING NO. 2201237	REV 1.0
SCALE 0	SHEET 1 OF 1	

DO NOT SCALE PRINT