



Quick Installation Guide



TW100-BRV324

Table of Contents

English	1
1. Before You Start	1
2. Hardware Installation	2
3. Configure the Router	3
Troubleshooting	4

1. Before You Start



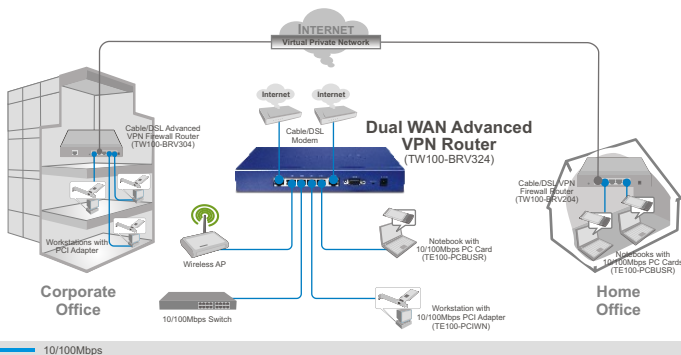
Package Contents

- TW100-BRV324
- Quick Installation Guide
- User's Guide CD-ROM
- 1 x RJ-45 Ethernet Cable
- Power Adapter (5V, 3A)

Installation Requirements

- A computer with a wired network adapter properly installed.
- Web Browser: Internet Explorer (5.0 or higher) or Netscape Navigator (4.7 or higher)
- Broadband Internet
- Installed Cable or DSL Modem

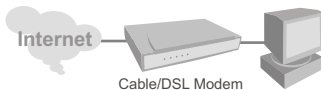
Application



2. Hardware Installation

Note: Gather all information related to your Internet Connection before you start. If necessary, contact your Internet Service Provider (ISP).

1. Verify that you have an Internet connection when connecting your computer directly to the Cable or DSL modem.



2. Connect one end of a RJ-45 cable to the TW100-BRV324's WAN 1 port. Connect the other end of the cable to your modem. If you have a second Internet connection, connect one end of a RJ-45 cable to WAN 2. Then connect the other end of the cable to the second modem.

3. Connect one end of a RJ-45 cable to one of the TW100-BRV324's LAN ports. Connect the other end of the cable to the computer's Ethernet port.

4. Connect the AC Power Adapter to the TW100-BRV324 and then to a power outlet.

5. Verify that the following panel lights are on: **Power, LINK/Act, WAN 1 and WAN 2.**



3. Configure the Router

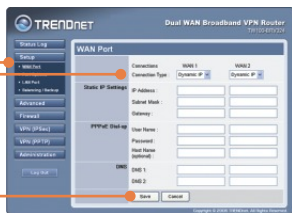
1. Open your web browser, type **http://192.168.0.1** in the Address bar, and press **Enter**.



2. Enter the **User name** and **Password**. Then click **OK**.
User name: admin
By default, there is no password.



3. Click **Setup**, and then click **WAN Port**. Select the type of Internet access that you have. Configure the settings based on information provided by your ISP. Then click **Save**.



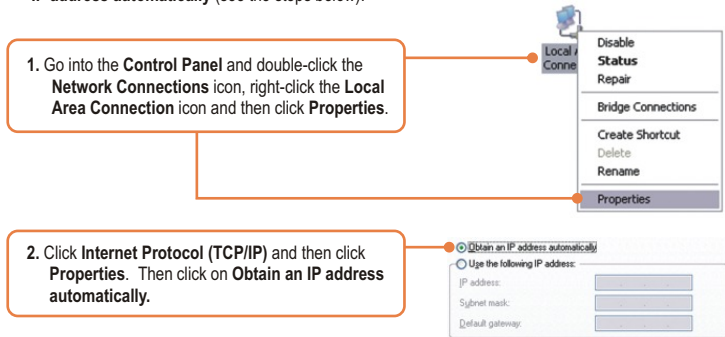
4. If you have a second Internet connection, repeat step 3 for **WAN 2**.

Your configuration is now complete.

For detailed information regarding the TW100-BRV324's configuration and advanced settings, please refer to the Troubleshooting section, User's Guide CD-ROM, or TRENDnet's website at <http://www.trendnet.com>.

Q1: I typed `http://192.168.0.1` in my Internet Browser's Address Bar, but an error message says "The page cannot be displayed." How can I get into the TW100-BRV324's web configuration page?

A1: First, check your hardware settings again by following the instructions in Section 2. Second, make sure the LINK/ACT light for the LAN port is lit. Third, make sure your TCP/IP settings are set to **Obtain an IP address automatically** (see the steps below).



Fourth, press on the factory reset button for 15 seconds.

Q2: I am not sure what type of Internet Account Type I have for my Cable/DSL connection. How do I find out?

A2: Contact your Internet Service Provider's (ISP) support service for the correct information.

Q3: I went through the Setup Wizard, but I can not get onto the Internet. What should I do?

A3: First, verify that you can get onto the Internet with a direct connection into your modem. Second, contact your ISP and verify all the information that you have in regards to your Internet connection settings is correct. Third, power cycle your modem and router. Unplug the power to the modem and router. Wait 30 seconds, and then reconnect the power to the modem. Wait for the modem to fully boot up, and then reconnect the power to the router.

Q4: Can I use the console port to configure the TW100-BRV324?

A4: The console port is intended for troubleshooting purposes only. You can not use the console port for configuration purposes. Please use the browser to configure the TW100-BRV324.

If you still encounter problems or have any questions regarding the TW100-BRV324, please contact TRENDnet's Technical Support Department.

Register Your Product

To ensure the highest level of customer service and support, please take a moment to register your product Online at: www.trendnet.com/register

Thank you for choosing TRENDnet

Certifications

This equipment has been tested and found to comply with FCC and CE Rules. Operation is subject to the following two conditions:

- (1) This device may not cause harmful interference.
- (2) This device must accept any interference received. Including interference that may cause undesired operation.



Waste electrical and electronic products must not be disposed of with household waste. Please recycle where facilities exist. Check with you Local Authority or Retailer for recycling advice.



NOTE: THE MANUFACTURER IS NOT RESPONSIBLE FOR ANY RADIO OR TV INTERFERENCE CAUSED BY UNAUTHORIZED MODIFICATIONS TO THIS EQUIPMENT. SUCH MODIFICATIONS COULD VOID THE USER'S AUTHORITY TO OPERATE THE EQUIPMENT.

ADVERTENCIA

En todos nuestros equipos se mencionan claramente las características del adaptador de alimentación necesario para su funcionamiento. El uso de un adaptador distinto al mencionado puede producir daños físicos y/o daños al equipo conectado. El adaptador de alimentación debe operar con voltaje y frecuencia de la energía eléctrica domiciliar existente en el país o zona de instalación.



TRENDnet Technical Support

US • Canada

Toll Free Telephone: 1(866) 845-3673

24/7 Tech Support



Europe (Germany • France • Italy • Spain • Switzerland • UK)

Toll Free Telephone: +00800 60 76 76 67

English/Espanol - 24/7

Francais/Deutsch - 11am-8pm, Monday - Friday MET

Worldwide

Telephone: +(31) (0) 20 504 05 35

English/Espanol - 24/7

Francais/Deutsch - 11am-8pm, Monday - Friday MET

Product Warranty Registration

Please take a moment to register your product online.

Go to TRENDnet's website at <http://www.trendnet.com/register>

TRENDnet[®]
20675 Manhattan Place
Torrance, CA 90501
USA