

TV-IP300W

**Advanced Day/Night Internet Camera Server
Quick Installation Guide**

**Guide d'installation rapide pour le
Internet Caméra Serveur Avancée Jour et Nuit**

**Anleitung zur Schnellinstallation des
Infrarot Nachtsicht Farb IP Kamera Server**

**Guía de Instalación Rápida para
Servidor Avanzado De la Cámara fotográfica Del Internet De Dia/Noche**

Version 1.11.05



TRENDnet[®]
TRENDware, USA
What's Next in Networking

Table of Contents

English	1
1. Prepare for Installation	1
2. Install Hardware	2
3. Configure the Internet Camera	4
4. Using the Internet Camera Wirelessly	5
Troubleshooting	7

English QIG

1. Prepare for Installation

Thank you for purchasing the TV-IP300W. This Internet Camera will allow you to view live images from internal and external networks.

This guide will help you set up and configure your Internet Camera. Following the installation instructions should be quick and easy. If you run into problems, please refer to the Troubleshooting section or the more detailed installation procedures on the CD User's Guide. If you need further technical support, please visit www.trendnet.com or call our technical support department by phone.

Verify Package Contents

Please make sure you have everything in the box:



System Requirement

1. 10/100Mbps Ethernet
2. CD-ROM Drive
3. CPU: Intel Pentium III 350MHz or above
4. Memory: 128MB or above
5. Web Browser: Microsoft Internet Explorer 5.0 or above
6. VGA Resolution: 800 x 600 or above

2. Install Hardware

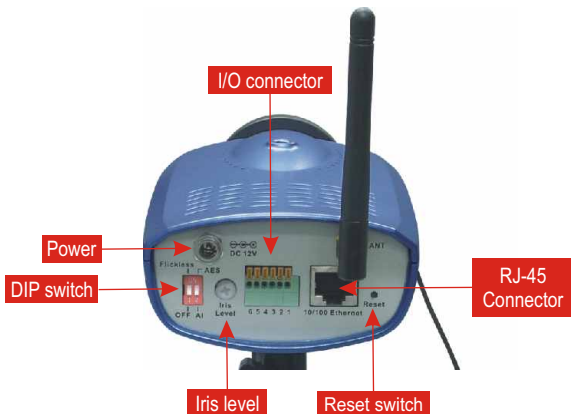
1. Position the metal stand, and mount the Internet Camera to the stand.
2. Connect the RJ-45 network cable to the Internet Camera then connect the other end of the network cable to a switch or hub.
3. Connect the power adapter to the Internet Camera. Make sure to use the power adapter supplied with the Internet Camera.

Note: Using a different power adapter may damage the unit.

TV-IP300W



Special I/O Ports Features



1. I/O Connector

The Internet Camera provides the I/O connectors on the rear panel, which provide the physical interface to send and receive digital signals to variety of external alarm devices.

2. DIP Switch

AES/AI Switch: When using the Auto Iris Lens, please switch to AI position
Flicker less/Off: If the power frequency used (in NTSC area) is 50Hz, please switch to Flicker less position.

3. Iris Level

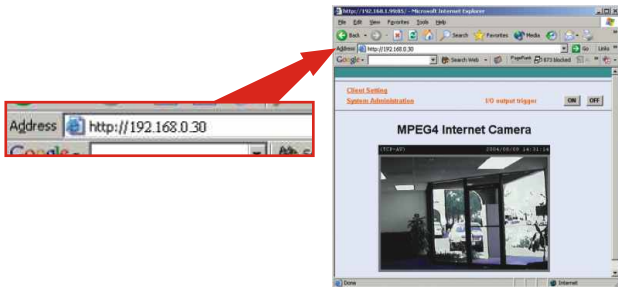
This is used only when the DC-Iris lens is connected to the camera.

4. Reset Button

This resets all the settings in the camera to default factory settings.

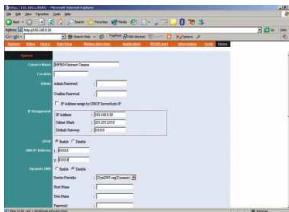
3. Configure the Internet Camera

1. Open Internet Browser Window and enter **<http://192.168.0.30>** (camera's default IP address)



Note: The PC's IP (Example 192.168.0.50) address must correspond with the Internet Camera's IP address (Default IP: 192.168.0.30) in the same segment for the two devices to communicate.

2. Click on **System Administration** to access the configuration page.

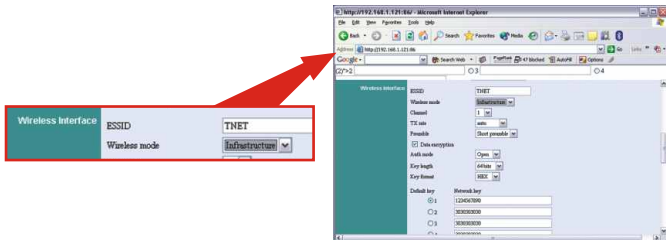


3. Enter an IP address, Subnet mask, and Default gateway that corresponds with your existing network for the camera. Then click on **Save** button to keep the changes.

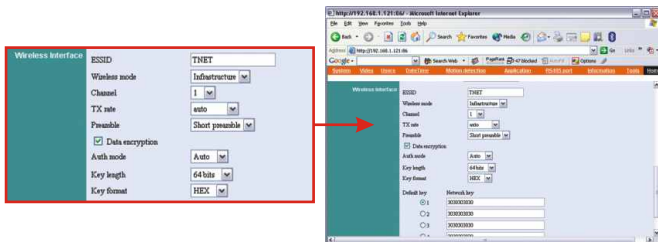
Note: If you need to access the configuration remotely, it is recommended to enter a static IP address and the Internet DNS IP address.

4. Using the Internet Camera Wirelessly

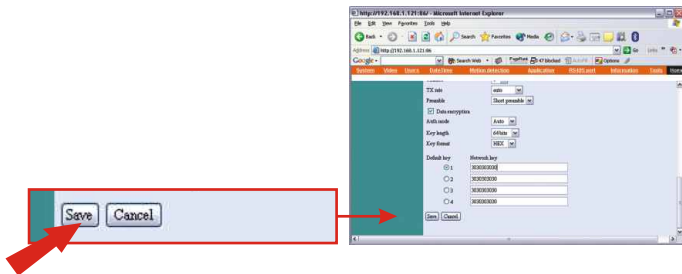
1. Scroll down in the **System Administration** configuration page until you see the **Wireless Interface** heading.



2. Type in the **same SSID** of your wireless Access Point or Router into the **ESSID** field. Set **Wireless Mode** to **Infrastructure** and make sure that the **channel** is the **same** as your wireless Access Point or Router. If your wireless Access Point or Router has WEP encryption enabled, select **Data encryption** and make sure that the **Auth mode**, **Key length**, **Key format**, and **Default key** are the same as your wireless Access Point or Router.



3. Scroll down to the bottom of the page and Click **Save**.



4. Disconnect the CAT5 cable and the power adapter connector from the TV-IP300W.



5. Reconnect the power adapter connector to the TV-IP300W. Allow 5-10 seconds for the TV-IP300W and the wireless Access Point to communicate wirelessly. Then type the **IP Address** that you assigned to the TV-IP300W in your web browser for verification.

Troubleshooting

Q1. The image is blurry, how do I fix this?

A1. You can adjust the Internet Camera's focus by rotating the lens.

Q2. Can I replace the camera lens?

A2. The Internet Camera's Lens is replaceable with a standard CS-Mount type lens.

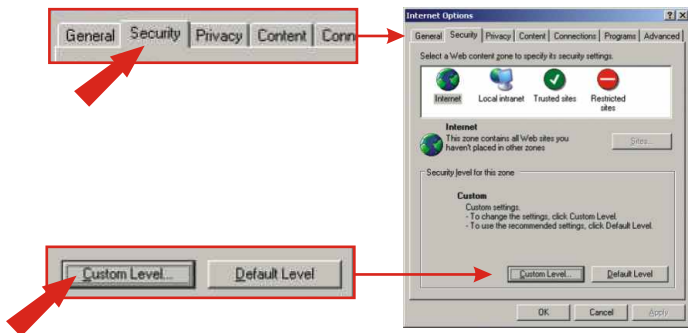
Q3. How do I view the Internet Camera's live images within my Local Network?

A3. Open a web browser (Internet Explorer or Netscape), type your Wireless Internet Camera's IP address (i.e.: 192.168.0.30) in the Address bar, and then hit the **Enter** key. The Welcome page of the Internet Camera will appear.

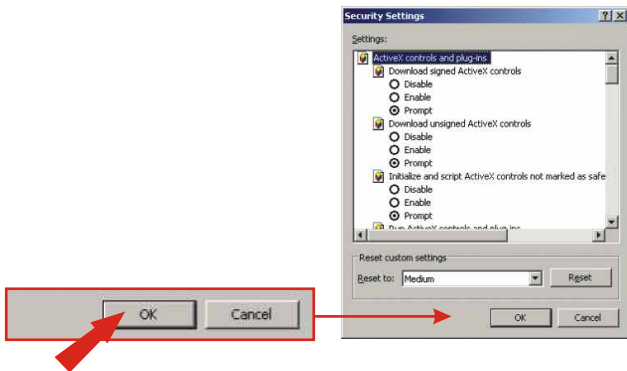
Q4. When I enter the IP address of the camera, the image does not load, why?

A4. Please make sure all the Active X features are enabled for your Internet Explorer.

1. Go to **Tool (on the Tool bar) > Internet options > Security**



2. Click on **Custom Level** and make sure all ActiveX controls are set to **"Enable"** and click **OK**.



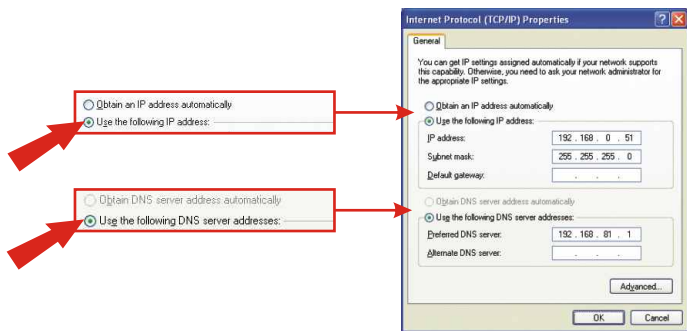
3. Once you save the settings, the browser will load again and the image should appear.

Q5. How do I configure my computer's IP address?

A5. For Windows 2000/XP users:

- On the Desktop, right click on **My Network Places** > select **Properties** > right click on the **Local Area Connection** > select **Properties**, the Local Area Connection Properties Window will appear
- Under **General** tab, select **Internet Protocol (TCP/IP)** > click on **Properties** button, Internet Protocol (TCP/IP) Properties Window will appear

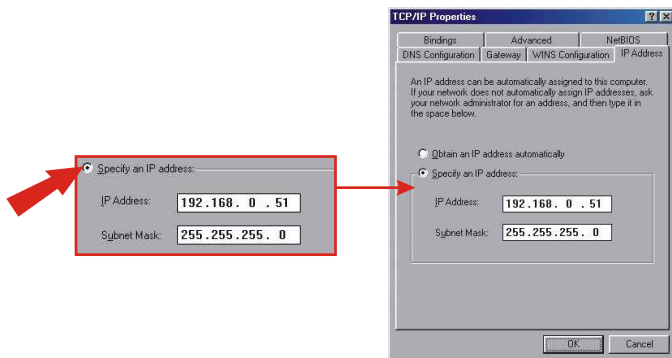
1. Select Use the following IP address option and enter the IP, Subnet Mask and Default gateway addresses.
2. Click OK to complete



For Windows 98/ME users:

- On the Desktop, right click on **Network Neighborhood** > select **Properties** > right click on the **Local Area Connection** > select **Properties**, the Local Area Connection Properties Window will appear
- Under **Configuration** tab, select your **Network Adapter (TCP/IP protocol)** > click on **Properties** button, TCP/IP Protocol Properties Window will appear

1. Select *Specify an IP address* option and enter the IP, Subnet Mask addresses.



For detailed information about the TV-IP300W's configuration and advanced settings, please refer to the User's Guide on the included CD-ROM or to www.TRENDnet.com.

Contact Technical Support

Telephone: +1-310-626-6252
Fax: +1-310-626-6267
Website: www.TRENDNET.com
E-mail: support@trendware.com

Technical Support Hours

7:00AM ~ 6:00PM, Monday through Friday
Pacific Standard Time (except holidays)



TRENDware, USA

What's Next in Networking

Product Warranty Registration

Please take a moment to register your product online.
Go to TRENDware's website at <http://www.TRENDNET.com>

TRENDware International, Inc.
3135 Kashiwa Street
Torrance, CA 90505

<http://www.TRENDNET.com>