



ARM8200 ADSL 2/2+ Modem Router (4-port)



- * Please remove any ADSL USB Modem Driver or dial-up software and disable the firewall. As they may cause connection problem.
- * This quick installation is meant to help you to install the product quickly and easily. For further information, please refer to the User Manual

ADD-ARM8200 Quick Installation Guide

Package Contents

- | | | |
|-----------------------------|--------------------------------|------------------------------|
| - 1 x Modem Router (4-port) | - 1 x ARM8200 CD-ROM | - 1 x Ethernet (RJ45) Cable |
| - 1 x 9v/1A DC Power | - 1 x Quick Installation Guide | - 1 x Telephone (RJ11) Cable |

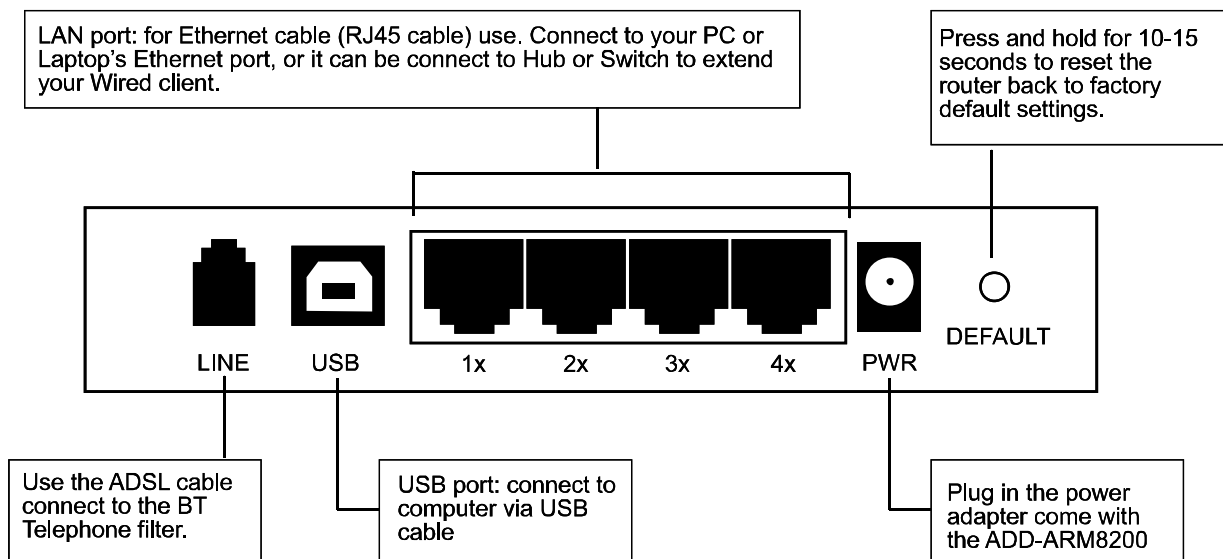


- PWR:** The LED stays lighted to indicate the system is power on properly.
- USB:** This LED is lighted when the USB connection is established and flashes when the data is sending/receiving via usb connection.
- ADSL:** This LED is lighted when a PPP link is established. The LED will non-stop flashing when there is no ADSL signal on the line.
- LAN:** The LED is lighted when a connection is established to LAN (1-4) port and flashes when LAN port is sending/receiving data.

Before You Start

Proper placement of your Gateway is important to improve your network performance. The figure below is a rough overview of the connection. Keep the following tips in mind to choose the location of your ADDON Gateway:

- Place the Gateway on a flat, stable surface.
- Keep the device clear from metal obstructions and away from direct sunlight.
- Do NOT place objects or components on top of the Gateway.
- Connect the Power adapter to the receptor at the back panel of the ADD-ARM8200 and plug the other end of the power adapter to the wall outlet or power strip. The PWR LED will turn ON to indicate proper operation.
- Insert an Ether cable to LAN port 1 on the back panel of the ADD-ARM8200 and an available Ethernet port on the network adapter in the computer you will use to configure the ADD-ARM8200. The LED light for LAN Port 1 will illuminate to indicate proper connection.



Warning: Only use the power adapter is provided from this package, use other power adapter may cause hardware damage

For any further information on ADDON product, please visit our website on : <http://www.addon-tech.com>

Configuring Your Computer

Checking TCP/IP Settings for Windows XP

- a) Click "Start", select "Control Panel -> Network Connection" and right click "Local Area Connection" then select "Properties". The "Local Area Connection Properties" will appear (fig 1).
- b) Select "Internet Protocol (TCP/IP)" then click "Properties", window (fig 2) will appear.
 1. use IP address from ADD-ARM8200, (Recommend)
 - Select "Obtain an IP address automatically" and "Obtain DNS server address automatically".
 2. use IP address which you are desired
 - Select "Use the following IP address". Make sure enter correct addresses in "IP Address" and "Subnet Mask" fields.
 - You must set ADD-ARM8200's IP address as "Default Gateway" which is 192.168.1.1.
 - If the DNS Server fields are empty, select "Use the following DNS server addresses" and enter the DNS address is provided by your ISP, then click "OK"

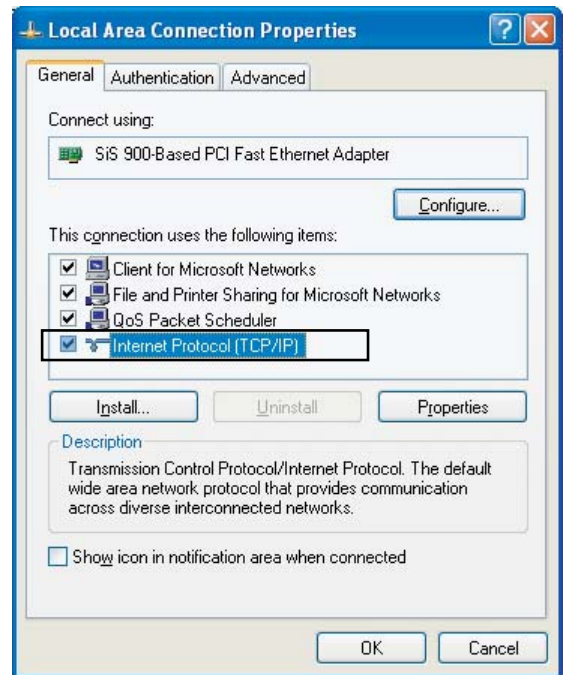


fig 1

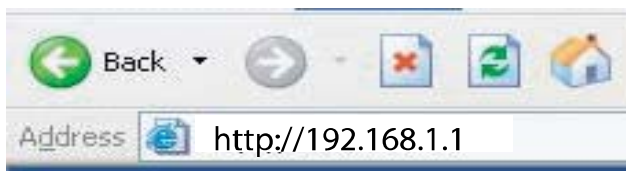
Setting up Internet Access for Windows XP

- a) Click "Start" and select "Control Panel -> Network and Internet Connections".
- b) Select "Internet Connection".
- c) Click "Connection" tab, and then click the "Setup" button. Click "Cancel" in the pop-up "Location Information" window.
- d) Click "Next" in the "New Connection Wizard" window.
- e) Select "Connect to the Internet" then click "Next".
- f) Select "Set up my connection manually" then click "Next".
- g) Select "Connect using a broadband connection that is always on" then click "Next".
- h) Click "Finish" to complete the setup process.

Start your Web Browser

To use the Web-based Utility, you have to launch your Internet Browser (MS IE 5.0 or later, Netscape Navigator 4.7 or later).

Step1: Enter ADD-ARM8200 default IP address <http://192.168.1.1> in the Address field and press Enter.



Step2: Login dialog box will appear, enter "admin" as the username and "admin" as the default password, then click "OK" to login to the web management utility.

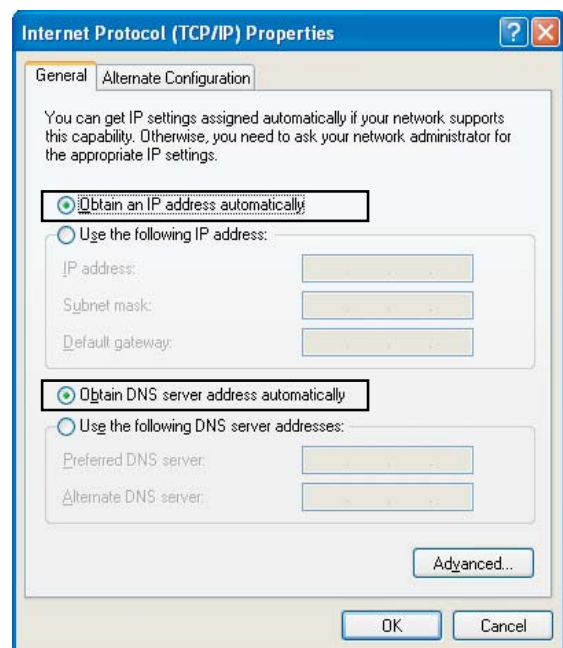
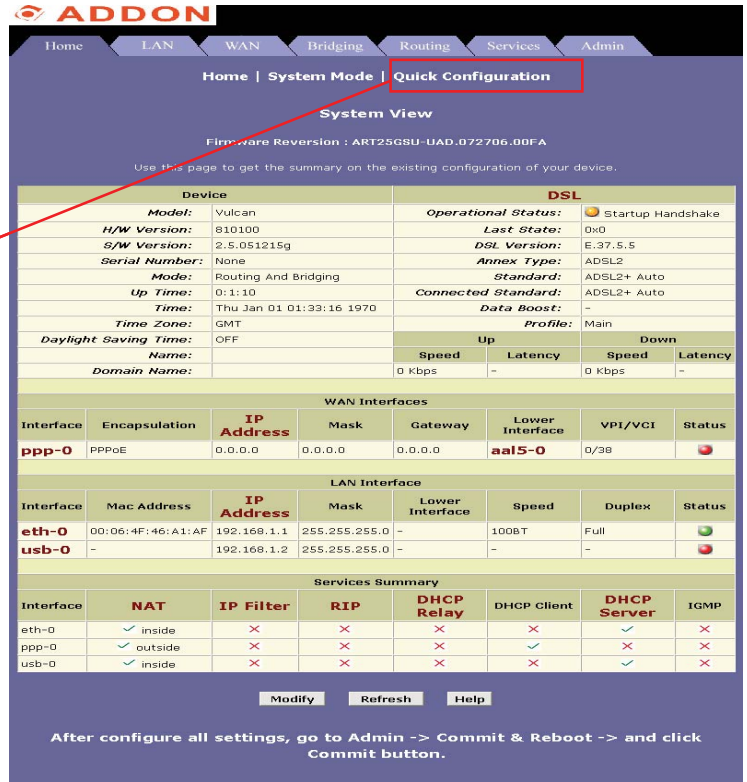


fig 2

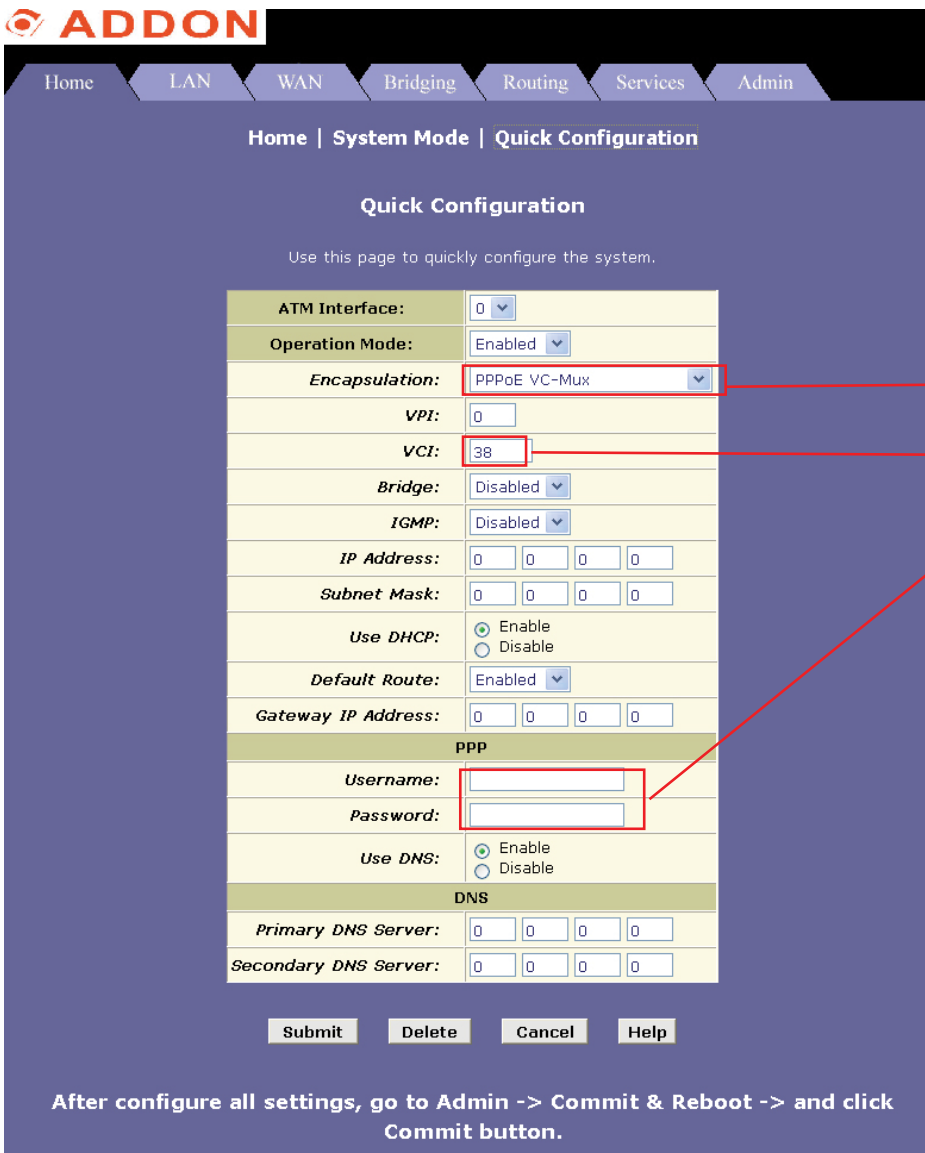


Step3: This first screen that appears is Home Screen. The basic layout of the Home page consists of a page selection list across the top of the browser window. The footer display gateway status, connection information and other useful information.

Click "Quick Configuration to start the router setup.

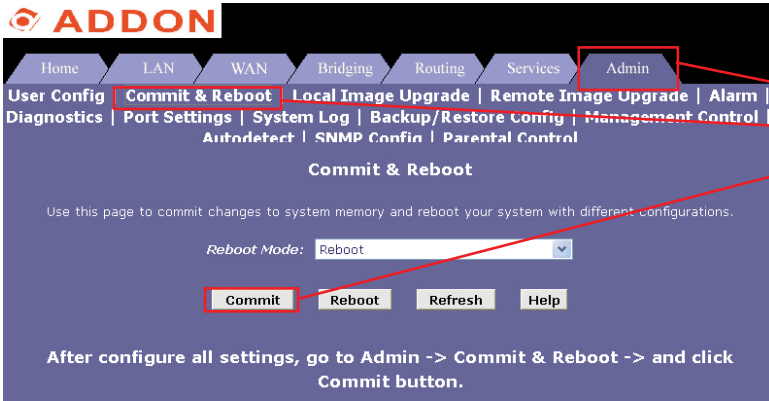


Step4: Change Encapsulation to "PPPoA-Mux" and VCI to 38. Enter the username and password you were supplied by your ISP. Click Submit to save your settings.



- Change Encapsulation to "PPPoA VC-Mux" and VCI to 38 .
- Enter the username and password you were supplied by your ISP.
- Click "Submit" to save your settings.

Step 5: After configure all settings on the router, please go to: "Admin" > "Commit & Reboot" > and click on the "commit" button. These will save all your change to the router.



After configure all settings, please click "Admin", "Commit & Reboot", "Commit", these will save all the settings and you can start to enjoy the internet with ADDON ARM8200 ADSL/ADSL2+ modem router.

Setup the router by CD-ROM

- Insert the ADD-ARM8200 CD-ROM to your cd driver in your pc/laptop, The easy setup will run automatically. Choose the "Quick Setup".

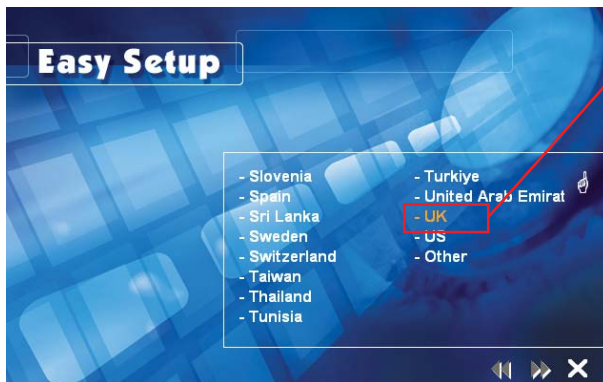


Click "Quick Setup" to start the router setup.

- Choose the correct Region for yourself.



Default settings vary by country, please choose the one you need. For UK customer, please choose "-UK" to continue.



- If your ADSL services are base on the BT telephone line, please choose “British Telecom” to continue.



Click “British Telecom” to continue.

- Enter the username and password you were supplied by your ISP and click next to continue.



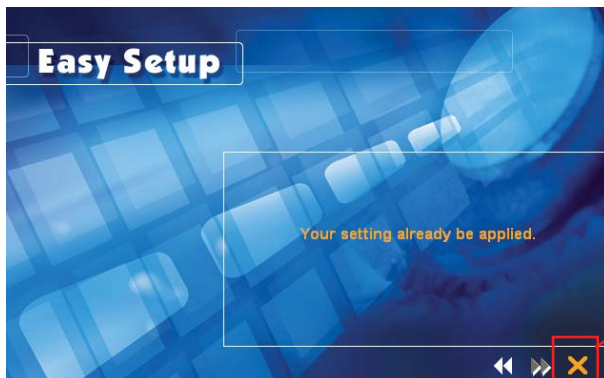
Enter the username and password you were supplied by your ISP

- Double check your information and click next to save the settings. If there is any mistake, please click “back” to modify your settings.



Double check the information, click “Next” to continue if all the information are correct.

- Your settings has been saved, close the setup wizard and you can start your internet.



Click “ X ” to close the Setup Wizard.

Congratulations! You have finished installing your new ADDON ADSL2/2+ Modem Router. For any further information about ADDON ARM8200, please refer to your user manual or visit our website on <http://www.addon-tech.com>.

