



NWAR3600

ADSL 2+ 11n Wireless Router (4-port)



- ★ Please remove any ADSL USB Modem Driver or dial-up software and disable the firewall. As they may cause connection problem.
- ★ This quick installation is meant to help you to install the product quickly and easily. For further information, please refer to the User Manual

ADD-NWAR3600 Quick Installation Guide

Package Contents

- 1 x Wireless Modem Router	- 1 x NWAR3600 CD-ROM	- 1 x Ethernet(RJ-45) Cable
- 1 x Power Adapter	- 1 x Quick Installation Guide	- 1 x Telephone(RJ-11) Cable



PWR: The LED stays lighted to indicate the system is power on properly.

WLAN: This LED is lighted when the WAN connection is established and flashes when the data is sending/receiving via wireless. (Wireless models)

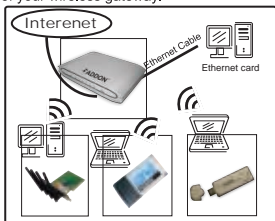
DSL: This LED is lighted when a PPP link is established. (Ethernet models)

LAN(1-4):The LED is lighted when a connection is established to LAN port and flashes when LAN port is sending/receiving data. (The number of LAN ports depends on your model)

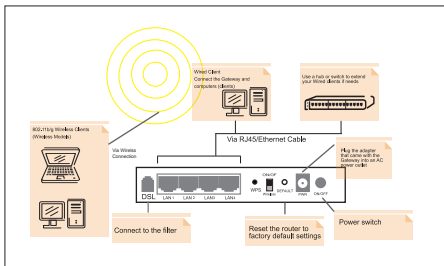
Before You Start

Proper placement of your gateway is important to improve your network performance. The figure below is a rough overview of the connection. Especially, in order to ensure the best performance of your wireless network, keep the following tips in mind to choose the location of your wireless gateway.

- Place the Gateway on a flat, stable surface.
- Keep the device clear from metal obstructions and away from direct sunlight.
- Do not place objects or components on top of the Gateway.
- Keep the Gateway away from transformers, heavy-duty motors, fluorescent lights, microwave ovens, refrigerators and other industrial equipments to prevent signal loss.
- Locate the Gateway in a central area as possible to provide better coverage for all wireless clients/
- Locate the Gateway as high as possible, wireless devices work best in a line-of-sight situation.
- Metallic-based UV window tint can affect wireless performance. Do not place the Gateway next to a tinted window.



Rear View and Hardware Connection



Configuring your router

Step1. Physical connection

1. Connect the ADSL cable from BT filter to the ADSL port at the back of the router.
2. Connect the Ethernet cable from the Ethernet port on the router to the Ethernet port on the PC.
3. Connect the power cable to the router and turn on the power for the router.

Step2. PC Configuration

1. Right click the Network Neighbourhood icon on the desktop and click Properties.
2. Right click the Local Area Connection of the correct network card, and then choose Properties.
3. Choose the "Internet Protocol (TCP/IP)" and click Properties. The following window will appear:

Choose "Obtain an IP address automatically" and "Obtain DNS server address automatically". Click "Ok" to save the setting and exit the Properties window.

4. Restart your pc, so that the DHCP server of the router can assign an IP address to the PC.
5. In the Taskbar, click on the Start button and select -Control Panel -Internet options. Select the tab "Connections" and choose the "Never dial a connection" click the LAN settings button, choose "automatically detect settings", click "ok" to save and exit the Internet options windows.

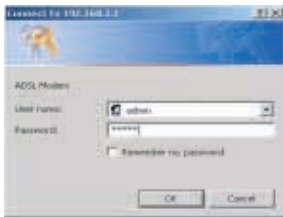


Setup the Router

1. Open your web browser and type the address 192.168.1.1 into the URL address field and then press Enter or Return key. The login screen will appear



2. The login dialog window will appear. This device's default user name is admin and password is admin.



3. This first screen is shown below

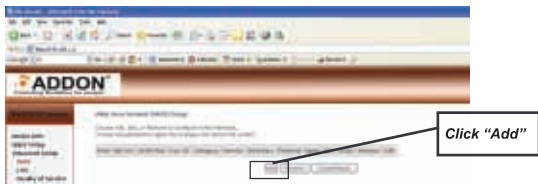


4. Click "Advanced Setep"->"WAN" on left hand side menu.

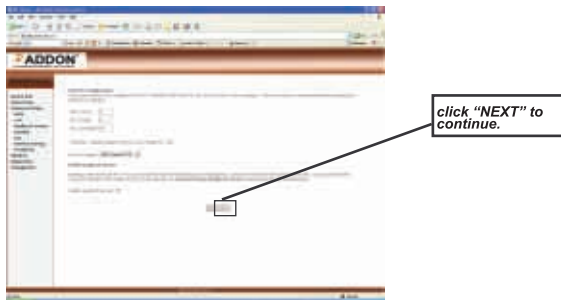
Click "Advanced Setep"->"WAN"



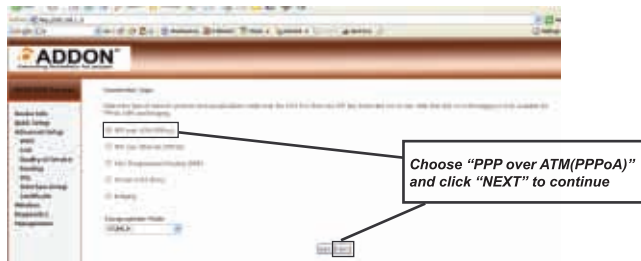
5. Click "Add" on WAN page.



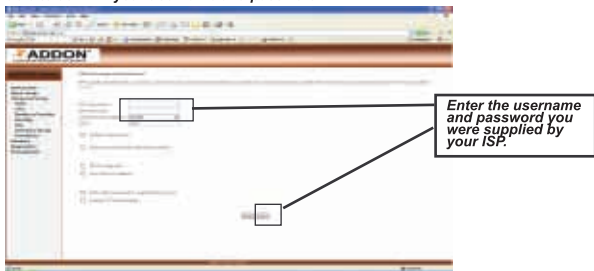
6. Click "NEXT" to continue and make sure the VCI is 38, VPI is 0.



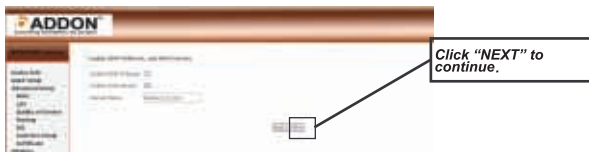
7. Choose "PPP over ATM(PPPoA)" for your ISP Connection Type and click "NEXT" to continue.



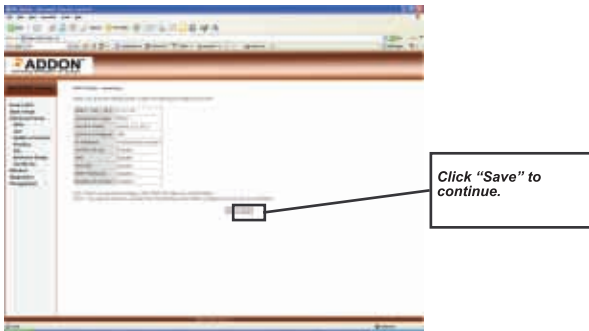
8. Now fill in the username and password you were supplied by your Internet Service Provider (ISP) into the username and password fields. It is important that the correct username and password are entered otherwise the connection will fail. Your ISP will be able to confirm your username and password.



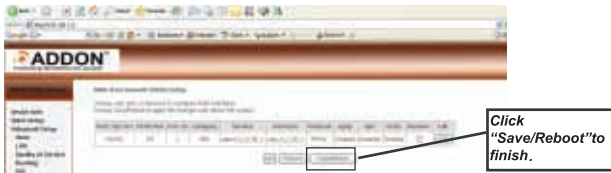
9. Click "NEXT" to continue.



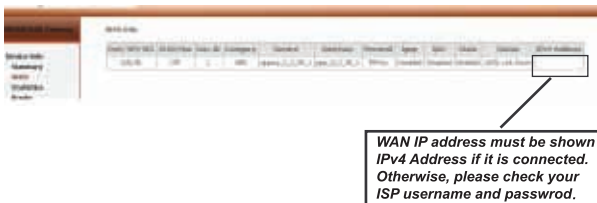
10. Click "Save" to continue.



11. Click "Save/Reboot" and to finish.



12. Click "Device Info"->"WAN" to check connection statuses.



Connect you wireless PC/Laptop to ADD-NWAR3600

- For Windows xp:

- Go to "Start" > "Control Panel" > "Network and Internet Connections" > "Network Connection";
- Right click on the "Wireless Network Connection", and choose "View Available Wireless Networks"; fig.1
- fig.2 Choose the "ADD-NWAR3600", double-click and the password box will be appeared, Enter and confirm the password then the connection will be established



fig.1



fig.2

- For Windows Vista:

- a) Right click on "Connection" (down right hand corner);
- b) (fig.3) Select "Connect to a network", all available networks will be displayed on the list.
- c) Highlight " ADD-NAWR3600 " and click on "Connect" (fig.4);
 - If you already setup the Security Key for ADD-NAWR3600 , the following window (fig.5) will be displayed.



fig.3

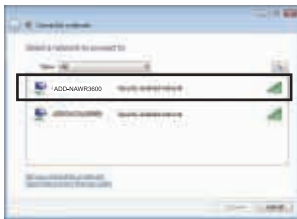


fig.4

- d) Enter your key and press "Connect";

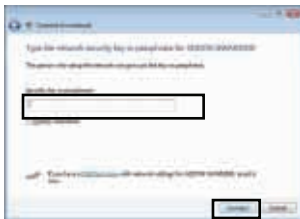


fig.5

Check your Wireless Network Connection Status (Windows Vista)

e) Once the connection established, you can see the general status in "Network and Sharing Center" (fig.6);

f) Choose "Manage network connections", fig.7 will appear;

g) Choose "Wireless Network Connection", fig.8 will appear, you can find more information about your connection in this window.

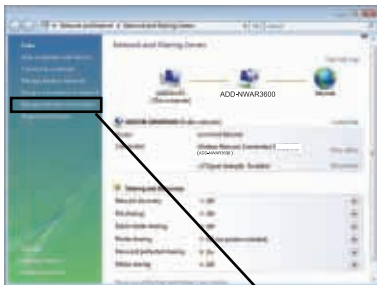


fig.6



fig.7

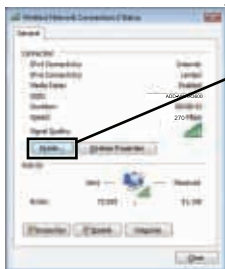
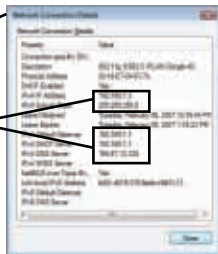


fig.8

You will find an IP address and default gateway number is your connection is correct.



For any further information about ADD-NWAR3600, please refer to your user's manual or visit our website.