



Aztech HomePlug devices are configured with a common Private Network Name, adding new HomePlug devices to an existing network with the default factory configuration is as easy as plugging the device to the power outlet. The Simple Connect button makes it easy to activate both the security for the network and create multiple networks on the same power line.

HL110EW Device Overview

Power LED

- Off - No Power.
- On - After Simple Connect is pressed for two seconds, this LED will blink to confirm the button is pressed.
- When Simple Connect is pressed for at least 10 seconds, this LED will blink to confirm the Private Network Name is reset.

On Power Saving Mode

- Slowly blinking green

Powerline Activity LED

- Off - Device is not connected to a HomePlug AV network.
- On - This LED remains on when the device is part of a HomePlug AV network.
- The LED colors represents the connection rate within the HomePlug AV network whether it is good (red), better (amber), or best (green).
- The LED flashes to indicate network activity.

Ethernet Activity LED

- Off - An Ethernet device is not connected.
- On - An Ethernet device is connected.
- The LED flashes to indicate Ethernet activity.

Wireless LED

- Off - Wireless is disabled.
- On - Wireless is Enabled.
- The LED flashes to indicate wireless activity.

Ethernet Ports

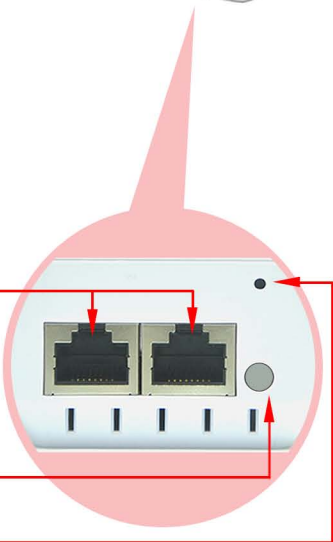
This is where you connect your Ethernet devices.

Simple Connect Button

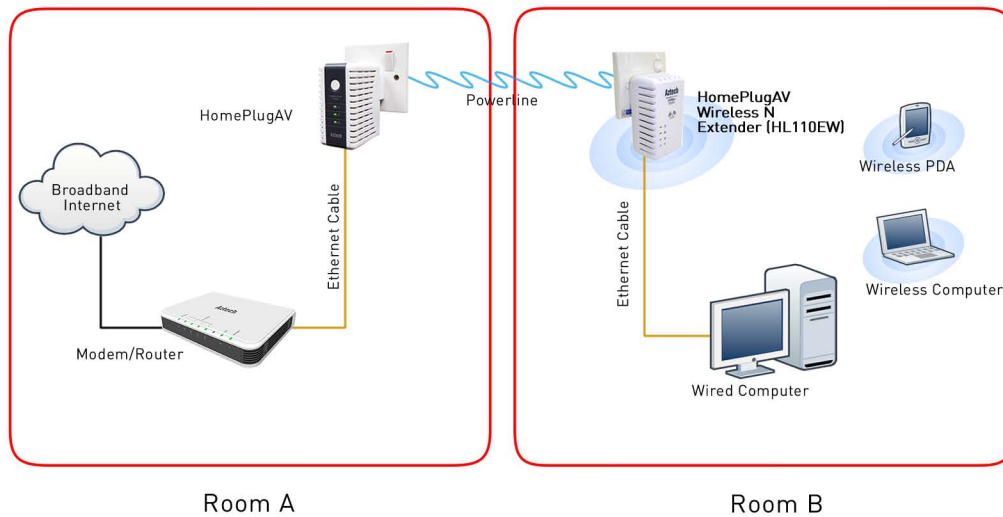
- Press for 2 seconds to initiate pairing.
- Press for 10 seconds to randomize the private network name

Reset Button

Press for 3 seconds to restore for factory defaults.



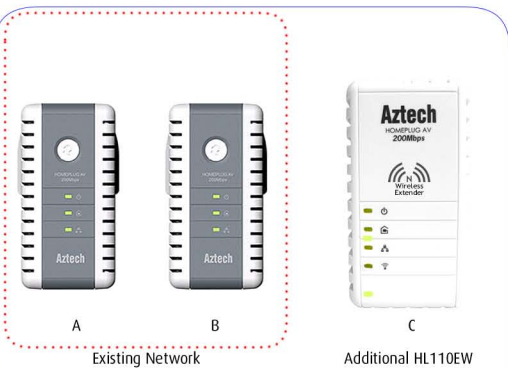
Setup Diagram



- Once you have completed the pairing, connect 1 HomePlug AV to a wall socket on Room A.
- Plug one end of the ethernet cable to your Router/Modem and then connect the other end to the HomePlug AV ethernet port.
- On Room B, connect the HomePlug AV Wireless N Extender to a wall socket and check the PL-ACT LED behavior. This LED should be ON to ensure that the device is paired with the 1st HomePlug AV.
- Plug one end of the ethernet cable to your Ethernet device and then plug the other end to any of the available ethernet port of your HomePlug AV Wireless N Extender.
- For your Wireless Devices, using your wireless client's utility, search for the HomePlug AV Wireless N Extender's SSID then click Connect to connect to your network via wireless.

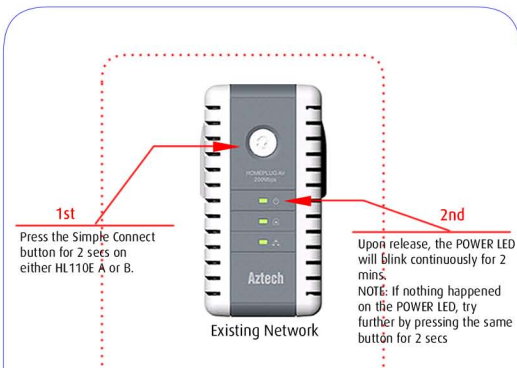
How to Add a New HomePlugAV Device to an Existing Security-Enabled Powerline Network?

STEP 1



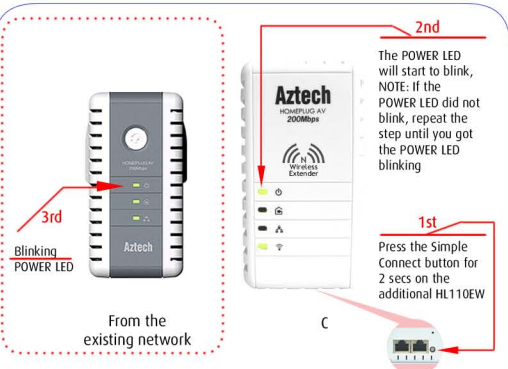
* Plug the additional HL110EW to a power outlet near your existing HomePlug network so that you can observe the LED behavior on the individual HL110EW.

STEP 2



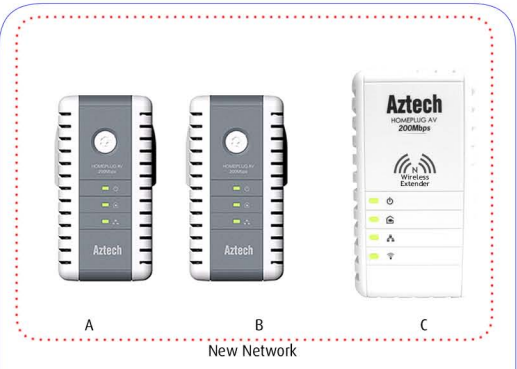
* Pressing the Simple Connect button for 2 secs, this will trigger the unit to search for another Simple Connect enabled HomePlug AV device, a time window of 2 mins is programmed on the device.

STEP 3



* Make sure you do this action within 2 mins after pressing the Simple Connect button on the first HL110E. The LEDs on both devices will switch OFF and ON twice to signify they are searching for the other device to pair with.

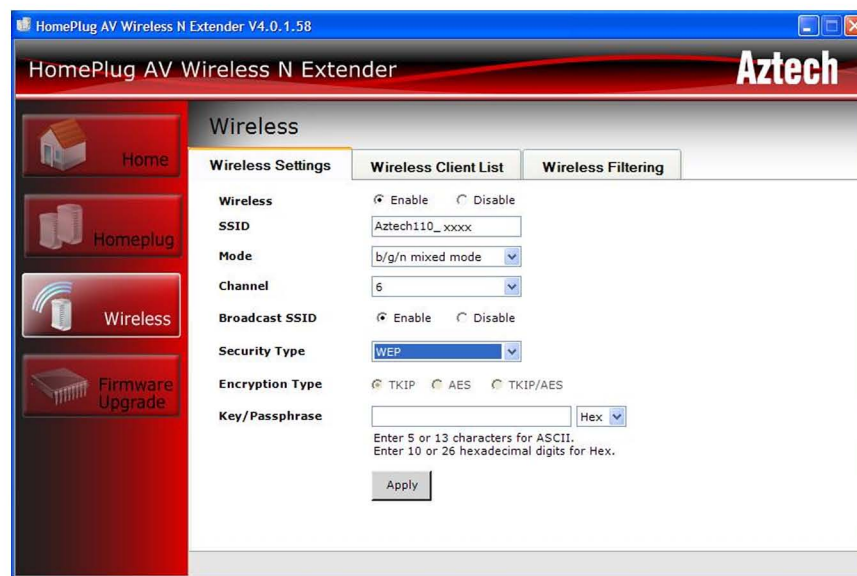
STEP 4



* All Powerline Activity LED will be ON upon getting the additional HL110EW join the existing network AB, this presents you with a new network of 3 HomePlugs A, B and C. NOTE: If the Powerline Activity LED on HL110EW is not ON, repeat steps 1-4.

Connecting via Wireless

By default your wireless connection is 'Enabled'. Using your HomePlug AV Wireless N Extender utility allows you to configure your wireless settings. Install the CD utility that comes with the package then follow the steps on How to change the default settings.



- Plug one end of the ethernet cable to your Computer and then connect the other end to the HomePlug AV Wireless N Extender's ethernet port.
- Open your HomePlug AV Wireless N Extender Utility then click Wireless Tab.
- Select Wireless Settings, this page allows you to change your Wireless Settings.
- Select Enable to enable your wireless connection.
- By default your HomePlug AV Wireless N Extender has its own unique SSID. You may change this SSID to your desired SSID on the SSID box.
- For Broadcast SSID select Enable to broadcast your device wireless network name.
- It is recommended to set your Wireless Security to avoid unauthorized connection to your network. Set your desired Wireless Security then click Save to save your settings.



Aztech HomePlug 裝置是使用共同的私人網絡名稱,當增加另一個HomePlug到現有的網絡配置上時,因為有原廠系統默認值指示,只需將HomePlug插在電源插座上便可以使用。使用簡單連接按鈕,更容易建立安全網絡及同時與多部電腦分享連接使用。

HL110EW 裝置概況

電源LED
關閉 電源終止
啟動 當按住簡單連接按鈕兩秒鐘後,LED就會閃爍以確認按下按鈕
當按住簡單連接按鈕至少十秒鐘,LED就會閃爍以確認重設私人網絡名稱

省電模式中
在省電模式時綠燈會慢慢閃爍

電源線活動LED指示
關閉 裝置沒有連接到HomePlug影音電源網絡
啟動 LED保持啟動代表裝置是HomePlug 影音電源網絡設備其中一部分。
LED顏色代表連接HomePlug 影音電源網絡的信號:良好(紅色),非常好(黃色),最佳(綠色)。
LED閃爍代表網絡線活動中

網絡線活動LED指示
關閉 網絡線設備沒有連接。
啟動 網絡線設備連接。
LED閃爍代表網絡線活動中

無線網絡LED指示/按鈕
關閉 無線網絡沒有連接
開啟 LED指示燈保持穩定亮著,表示無線網絡已被激活
LED 閃爍表示網絡活動中
按住按鈕兩秒可切斷/關閉無線網絡連接

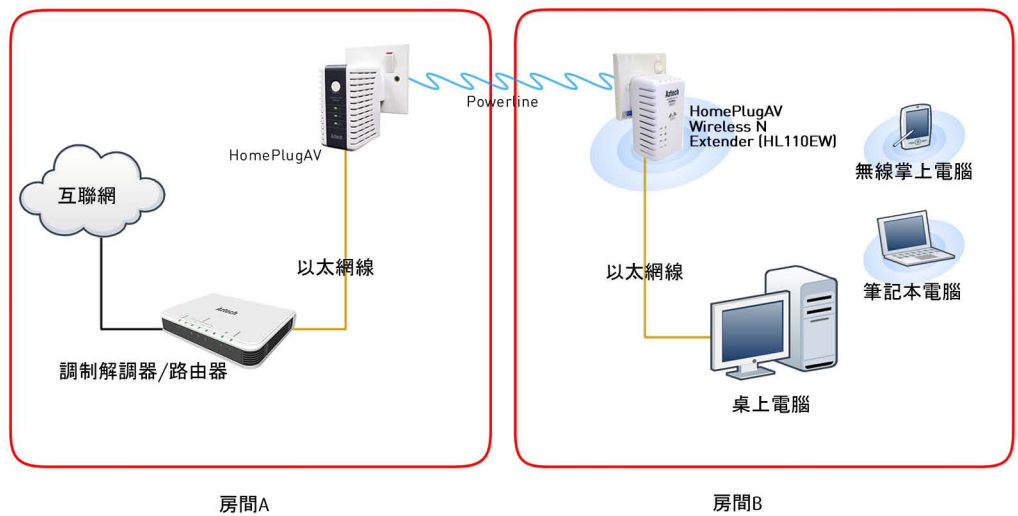
網絡線端口
可以連接網絡線設備

簡單連接按鈕
按住按鈕兩秒鐘後開始配對
按住按鈕十秒鐘後重設私人網絡名稱

重設按鈕
按住簡單連接按鈕三秒鐘重設
原廠系統默認值指示信號

Setup Diagram

設備安裝連接圖簡介



- 成功配對後,將Homeplug連接至房間A的牆壁插座。
- 將以太網線的一端連接至路由器/調制解調器,然後連接另一端至HomePlug的以太網端口。
- 接著連接另一個Homeplug至房間B并檢查LED指示燈,成功配對後LED指示燈全部亮起。
- 將以太網線的一端連接至以太網設備(如IP電話),然後連接另一端至HomePlug的任一以太網端口。
- 您也可以通過無線功能連接至其它的無線設備(如掌上電腦,筆記本電腦)。

如何添加另一部HomePlug裝置在現有安全激活的網絡中

第一步

現有網絡 A B 額外HL110EW C

* 將另外HL110EW連接至現有的網絡附近之電源插座上,在個別HL110EW可以觀察LED指示信號

第二步

首先按其中一部HL110E (A或B) 的簡單連接按鈕兩秒

第二當裝置啟動後,電源LED會閃爍連續兩分鐘
注意:如果電源LED沒有反應,嘗試再次按同一按鈕兩秒

現有網絡

* 按簡單連接按鈕兩秒,會自動尋找另一部啟用簡單連接之HomePlug影音電源網絡設備,系統設備需時兩分鐘。

第三步

第二電源LED將會開始閃爍,注意:如果源LED沒有反應,重複步驟直到電源LED閃爍

第三現有的網絡電源LED會閃爍

現有網絡 C

首先按下額外HL110EW的簡單連接按鈕兩秒

第四步

A B C
New Network

* 插入額外HL110EW C,所有電源線活動LED將根據指示呈現在現有網絡A B中,然後提供一個新的網絡包括3部Homeplug A, B和C。注意:如果HL110EW的電源線活動LED沒有啟動,請重複步驟1-4。

Connecting via Wireless

原廠系統無線網絡默認值已開啟,Homeplug的CD安裝軟件允許您更改無線設置。您可根據以下步驟重新設置用戶名(SSID)和密碼以防止被盜用。



- 將以太網線的一端連接至電腦,然後連接另一端至Homeplug的任一以太網端口。
- 打開homeplug的安裝軟件并單擊“Wireless”。
- 選擇“Wireless Settings”,此頁允許您更改無線設置。
- 選擇“Enable”旁的复选框可啟用無線連接。
- 在用戶名(SSID)後框中輸入您需更改的用戶名。
- 點擊“Broadcast SSID”旁的“Disable”即隱藏用戶名,“Enable”則表示不隱藏。
- 最後點擊“Apply”即可。