



## **Quick Installation Guide**

# **RANGER SERIES**

# **150MBPS WIRELESS BROADBAND HOME ROUTER**

**DG-HR1400**

V1.0  
2014-01-06

## **Copyright**

Copyright 2013 by Smartlink Network Systems Ltd. All rights reserved. Company has an on-going policy of upgrading its products and it may be possible that information in this document is not up-to-date. Please check with your local distributors for the latest information. No part of this document can be copied or reproduced in any form without written consent from the company.

## **Trademarks:**

DIGISOL™ is a trademark of Smartlink Network Systems Ltd. All other trademarks are the property of the respective manufacturers.

## Package Contents

The following items should be present in your package

- DG-HR1400 Wireless Broadband Home Router
- Power adapter (5V DC, 1A)
- Rubber feet (4 Nos.)
- Quick Installation Guide
- Installation Guide CD (includes User Manual, QIG & Utility)
- Patch Cord (1 No.)

Make sure that the package contains above items. If any of the listed items is damaged or missing, please contact your retailer immediately.

## Product Overview

Thank you for purchasing DG-HR1400 150Mbps 802.11n Wireless Broadband Home Router! DG-HR1400 is the best choice for Small office / Home office users, all computers and network devices can share a single xDSL / cable modem internet connection at high speed. Easy install procedures allow computer users to setup a network environment in very short time - within minutes, even inexperienced users. When the number of your computers and network-enabled devices grow, you can also expand the number of network slots by simply connecting a hub or switch, to extend the scope of your network.

All computers and IEEE 802.11b/g/n wireless-enabled network devices (including PDA, cellular phone, game console and more) can connect to this wireless router without additional cabling. With a compatible wireless card installed in your PC, you can transfer files up to 150Mbps (transfer data rate).

## Product Features

- High Internet Access throughput.
- Wireless speed up to 150Mbps.
- Allows multiple users to share a single Internet line.
- Shares a single Cable or xDSL internet connection.
- Access private LAN servers from the internet.
- Four wired LAN ports (10/100M) and one WAN port (10/100M).
- Works with IEEE 802.11b/g/n wireless LAN devices.
- Supports DHCP (Server/Client) for easy IP-address setup.
- Supports multiple wireless modes like: AP, Client, Wireless Bridge and Universal Repeater.
- Advanced network and security features like: Special Applications, QoS, DMZ, Virtual Servers, Access Control, Firewall.
- Allows you to monitor the router's status like: DHCP Client Log, System Log, Security Log and Device/Connection Status.
- Easy to use Web-based GUI for network configuration and management purposes.
- Remote management function allows configuration and upgrades from a remote computer (over the Internet).
- Provides Auto MDI / MDI-X function for all wired Ethernet ports.

## System Requirements

The following system requirements are recommended

- Notebook or desktop computer with network adapter (wired/wireless)
- Internet connection, provided by xDSL or cable modem with a RJ-45 Ethernet port.
- Windows 98/ME/2000/XP/Vista
- Web browser (Microsoft Internet Explorer 4.0 or above, Netscape Navigator 4.7 or above, Opera web browser, or Safari web browser).
- An available AC power socket (100 – 240V, 50/60Hz)

## Front View



LED Name	LED Status	Indication
Power (PWR)	On	Router is switched on and correctly powered.
WAN	On	WAN port is connected.
	Off	WAN port is not connected.
	Blinking	WAN activity (transferring or receiving data).
LAN(1-4)	On	LAN port is connected.
	Off	LAN port is not connected.
	Blinking	LAN activity (transferring or receiving data).
WLAN	On	Wireless network is switched on.
	Off	Wireless network is switched off.
	Blinking	Wireless LAN activity (transferring or receiving data).
WPS	On	A wireless device has been successfully added to the network by WPS function.
	Off	WPS process is not initiated.
	Blinking	A wireless device is connecting to the network by WPS function.

## Rear View

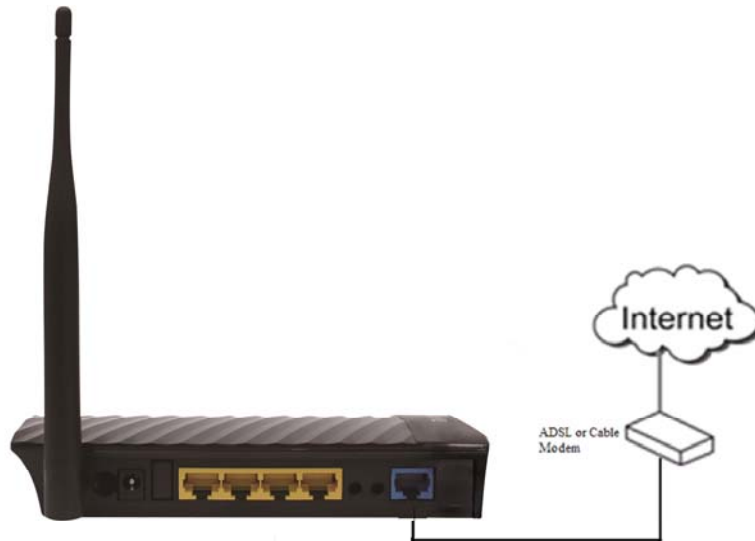


Interfaces	Description
Antenna	This antenna is a 5dBi dipole antenna.
Power on/off button	Press this button to power on/off the router.
Power	The Power socket is where you will connect the power adapter. Please use the power adapter provided with this Wireless Router.
LAN (1 – 4)	Local Area Network (LAN) ports 1 to 4.
WPS/WIFI	The WPS/WIFI button has two functions. WPS: Press this button for more than 5 seconds to initiate WPS. WIFI: Press this button for less than 5 seconds to enable WLAN.
Reset	Reset the router to factory default settings (clear all settings). Press this button and hold for 5 seconds to restore all settings to factory defaults.
WAN	Wide Area Network (WAN / Internet) port.

## Hardware Installation

Please follow the below mentioned instructions to build the network connection between your new WIRELESS router and your computers, network devices:

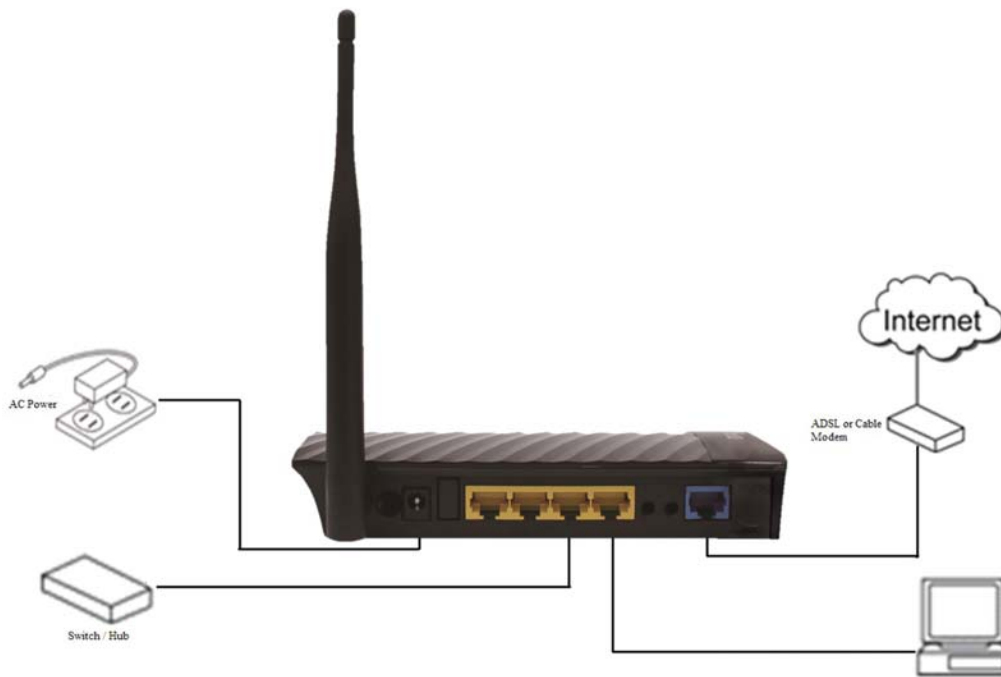
1. Connect your xDSL / cable modem to the WAN port of the router by an Ethernet cable.



2. Connect all your computers, network devices (switch / hub) to the LAN port of the router.



3. Connect the power adapter (5V DC / 1A) to the wall socket, and then connect it to the 'Power' socket of the router.

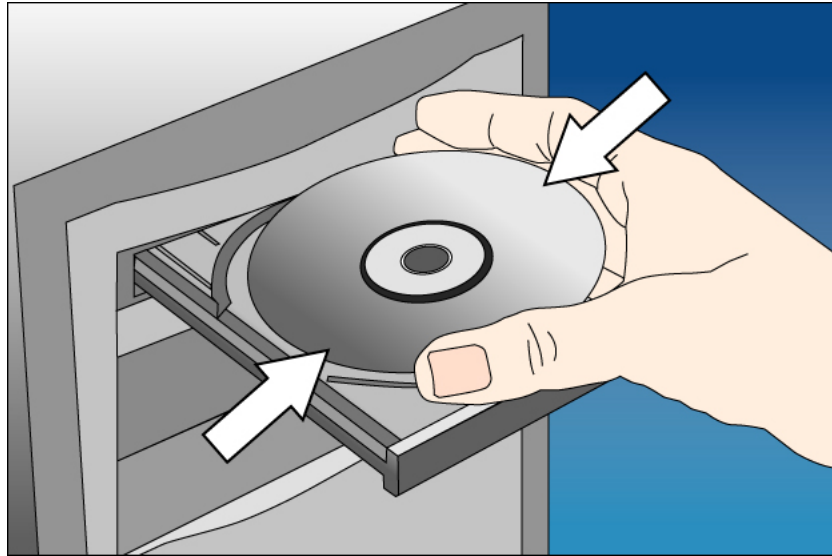


4. Please check all LEDs on the front panel. Power LED 'PWR' should be steadily ON, WAN and LAN LEDs should be ON. Check if the computer/network device connected to the respective port of the router is powered ON and correctly connected. If power LED 'PWR' is not ON, or any LED you expected is not ON, please recheck the cabling.



## Software Installation

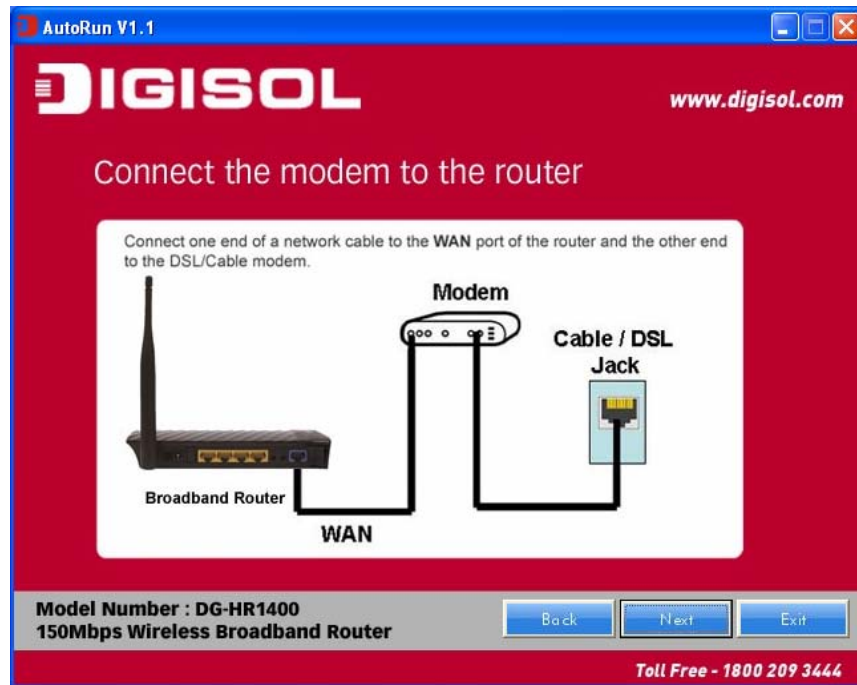
- Insert the Setup CD into your CD-ROM drive of notebook/desktop computer.



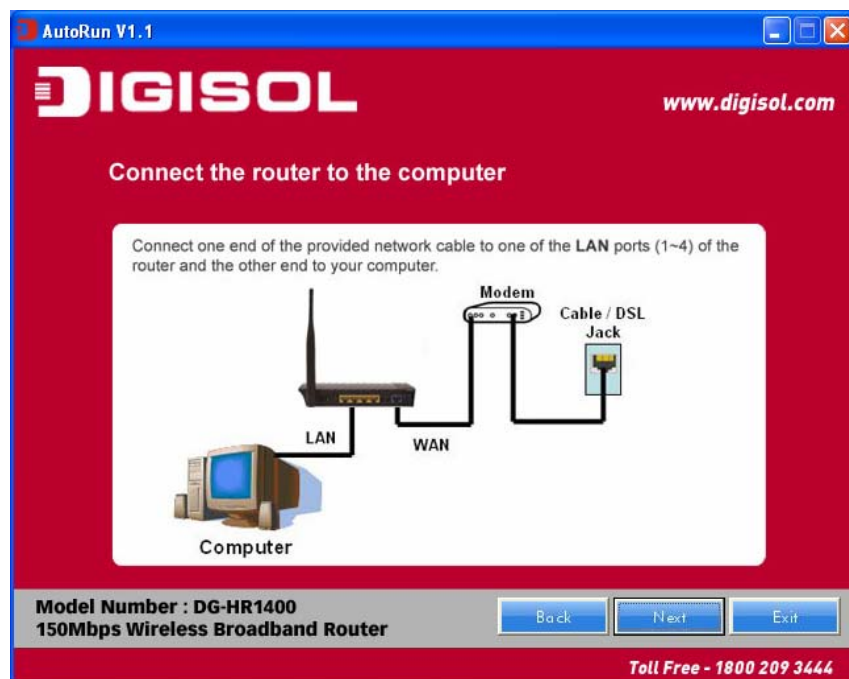
- Explore the CD and execute the “**AutoRun.exe**” file. Below given screen will appear. Click '**Start**' to Continue.



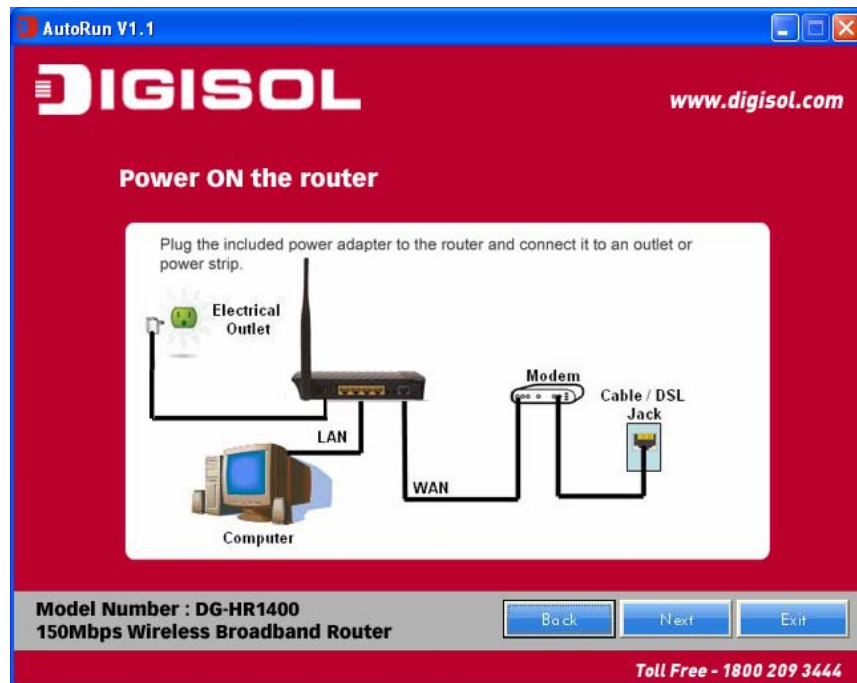
- Connect one end of a network cable to the WAN port of the router and the other end to the DSL/Cable modem. Click '**Next**' to continue.



- Connect one end of the provided network cable to one of the LAN ports (1~4) of the router and the other end to your computer. Click '**Next**' to continue with the installation.



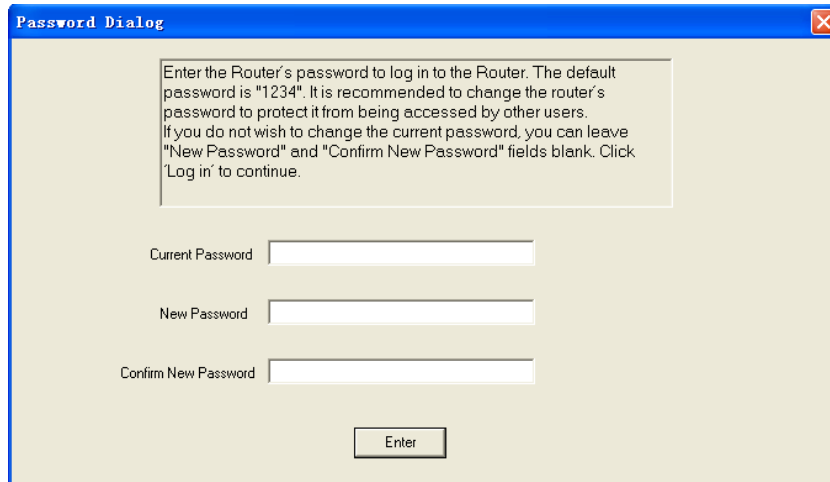
- Power on the Router. It will take approximately 30 seconds for the router to boot up completely. Click **'Next'** to continue with the installation.



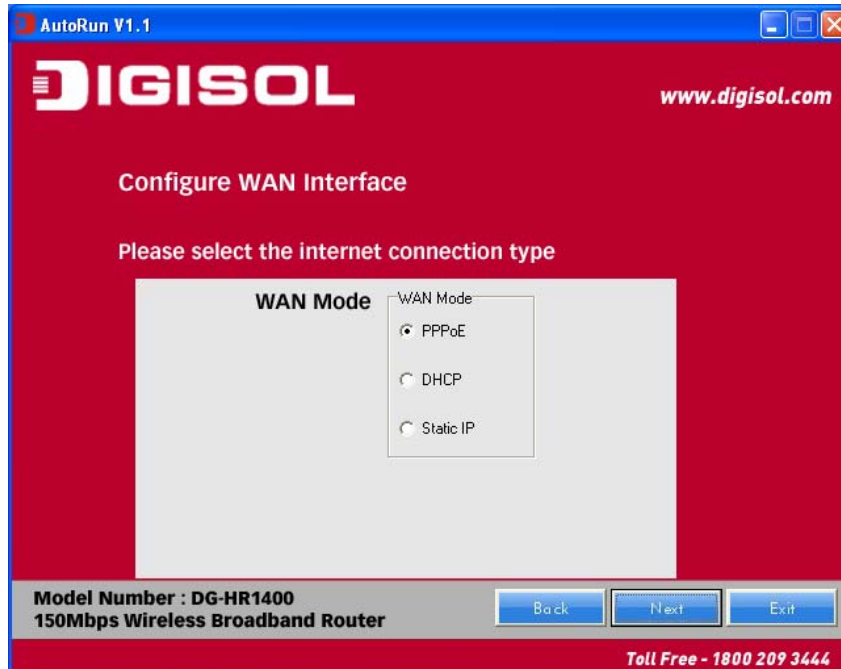
- Ensure the normal indication of all LED's on the router. If not, try the above steps again else click **'Next'** to continue.



- Enter the Router's password to log in to the Router. The default password is "1234". It is recommended to change the router's password to protect it from being accessed by other users. If you do not wish to change the current password, you can leave "New Password" and "Confirm New Password" fields blank. Click 'Enter' to continue.



- Please select the internet connection type. Click 'Next' to continue.



NOTE: The steps mentioned till here are the common steps to be followed for all the three modes. Following steps below describe how to configure the respective modes.

## PPPoE (DSL users)

- Choose PPPoE. (Point to Point Protocol over Ethernet) If your ISP uses a PPPoE connection you will be provided with a username and password. This option is typically used for DSL services.

AutoRun V1.1

**DIGISOL** www.digisol.com

Configure PPPoE

Please enter the username and password that your ISP has provided to you

PPP setting

User ID

Password

Model Number : DG-HR1400  
150Mbps Wireless Broadband Router

Back Next Exit

Toll Free - 1800 209 3444

- Once the user name and password is entered click on '**Next**', the screen shown below will appear. Click on '**Next**'.

AutoRun V1.1

**DIGISOL** www.digisol.com

Running Status

PPPoE mode setup OK.

If you get an error message then click "Back" to reconfigure the settings. Else click "Finish" to complete the configuration.

WAN Link Type

WAN IP

Default Gateway

Primary DNS

Secondary DNS

Model Number : DG-HR1400  
150Mbps Wireless Broadband Router

Back Next Finish

Toll Free - 1800 209 3444

- Enter the 'SSID' and click on 'Next'.



- Configure the wireless security. Enter the security mode i.e. either 'None' or 'WPA2 Mixed' and click on 'Next'.



- The screen as shown below will appear. Click on 'Finish'.

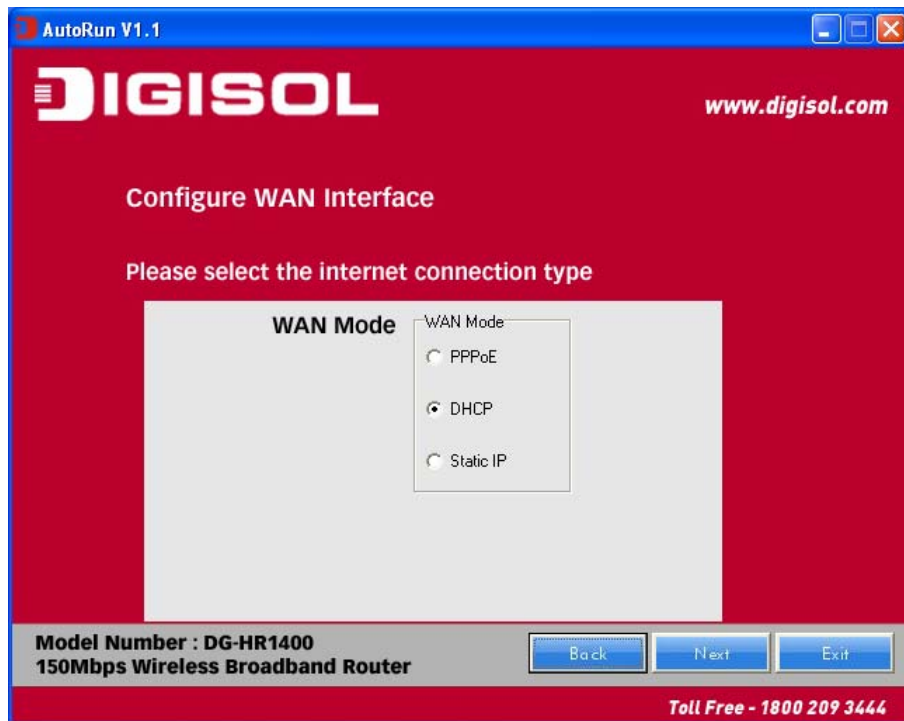


- Lastly, the router will reboot as shown below.



## ***DHCP (Cable Modem users)***

- Select DHCP Client to obtain IP Address information automatically from your ISP. Click on **'Next'**.



- The screen shown below will appear. Click on **'Next'**.





- Below mentioned screen will appear. Click on 'Next'.



- Enter the 'SSID' and click on 'Next'.



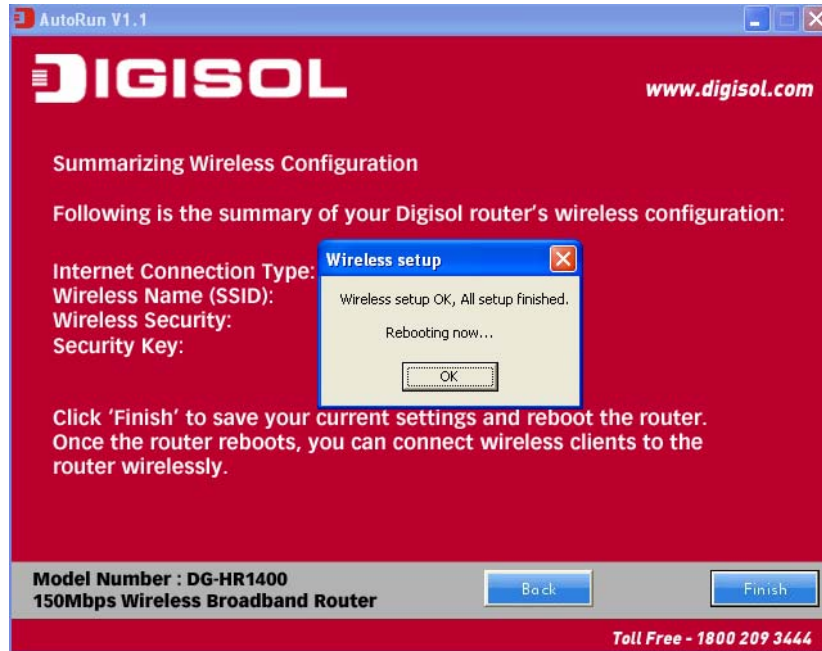
- Configure the wireless security. Enter the security mode i.e. either '**None**' or '**WPA2 Mixed**' and click on '**Next**'.



- Following screen will appear. Click on '**Finish**'.



- Lastly, the router will reboot as shown below.



### *Static IP (Cable Modem users)*

- Select Static IP Address if all the Internet port's IP information is provided to you by your ISP. You will need to enter in the IP address, subnet mask, gateway address and DNS address provided to you by your ISP. Each IP address entered in the fields must be in the appropriate IP form, which are four octets separated by a dot (x.x.x.x). The Router will not accept the IP address if it is not in this format. Click on '**Next**'.



- The screen shown below will appear. Click on 'Next'.



- Enter the 'SSID' and click on 'Next'.



- Configure the wireless security. Enter the security mode i.e. either '**None**' or '**WPA2 Mixed**' and click on '**Next**'.



- You can view the information about the wireless configuration in the next screen. Click '**Finish**' to save your current settings and reboot the router.



## Web Management

Connecting the router's management interface by web browser:  
After you assign an IP address to the computer, open the web browser, and type the IP address of the router in the address bar as '**http://192.168.2.1**'.  
The following message will be shown:



Please input user name and password in the field respectively, default user name is '**admin**', and default password is '**1234**', then press '**Login**' button, and you can see the web management interface of this router:

Interface	Protocol	IP Address	Gateway	DNS	Status
WAN	DHCP	0.0.0.0	0.0.0.0	0.0.0.0	Link Down(DHCP Client)

# FAQ

Following are the solutions to problems that may occur during the installation and operation of the Digisol DG-HR1400 Router.

## 1. Router cannot get connected to internet.

- Access the router's web configuration and go to 'status'->'Internet Connection' menu and verify internet connection status.
- If you were previously able to connect a computer to internet directly, try to do that again, and verify whether you can access internet with your computer directly attached to the device provided by your internet service provider.
- Check PPPoE user ID and password again.
- Call your internet service provider and verify whether there is some issue with their service.
- Try to reboot the router and verify whether it connects to internet or not.
- Try to use IP address instead of hostname. If you can use IP address to communicate with a remote server, but cannot use hostname, please check DNS settings.

## 2. Wireless client cannot locate the router.

- Verify whether 'Broadcast ESSID' is set to off in router's web configuration.
- Verify whether the antenna is properly connected and in correct direction.
- Is your wireless client far away from your router? Try to get closer to the router.
- Ensure that you input ESSID on your wireless client manually, if ESSID broadcast is disabled.

This product comes with lifetime warranty.  
For further details about warranty policy and  
product registration, please visit support  
section of [www.digisol.com](http://www.digisol.com)





A product of Smartlink Network Systems Ltd

DIGISOL House, Plot No. 5,  
Kurla Bandra Complex Road  
Santacruz (E), Mumbai - 400 098, India.

Tel +91 22 3061 6666 / 2652 6696,  
Fax +91 22 2652 8914

[www.digisol.com](http://www.digisol.com)

**DIGICARE™**  
Service And Support

 **1800 209 3444**

 [helpdesk@digisol.com](mailto:helpdesk@digisol.com)  
[sales@digisol.com](mailto:sales@digisol.com)