

Wired / Wireless ADSL 2/2+ Modem Router

AR-7084A / AR-7084gA
AR-7084B / AR-7084gB
Quick Installation Guide

Version 4.0 / July, 2008



Multi-Languages QIG on the CD

=====

Český: Českého průvodce rychlou instalací naleznete na přiloženém CD s ovladači

Deutsch: Auf der beiliegend Treiber CD finden Sie deutsche Anleitung zur Schnellinstallation.

Español: Incluido en el CD el G.R.I. en Español.

Français: Veuillez trouver l'français G.I.R ci-joint dans le CD

Italiano: Incluso nel CD il Q.I.G. in Italiano.

Magyar: A magyar telepítési útmutató megtalálható a mellékelt CD-n

Nederlands: De nederlandse Q.I.G. treft u aan op de bijgesloten CD

Polski: Skrócona instrukcja instalacji w języku polskim znajduje się na załączonej płycie CD

Português: Incluído no CD o G.I.R. em Portugues

Русский: Найдите Q.I.G. на русском языке на приложенном CD

Türkçe: Ürün ile beraber gelen CD içinde Türkçe Hızlı Kurulum Kılavuzu'nu bulabilirsiniz

Romana: Cd-ul cuprinde Ghid de instalare rapida in limba romana



Copyright© by Edimax Technology Co, LTD. all rights reserved. No part of this publication may be reproduced, transmitted, transcribed, stored in a retrieval system, or translated into any language or computer language, in any form or by any means, electronic, mechanical, magnetic, optical, chemical, manual or otherwise, without the prior written permission of this company

This company makes no representations or warranties, either expressed or implied, with respect to the contents hereof and specifically disclaims any warranties, merchantability or fitness for any particular purpose. Any software described in this manual is sold or licensed "as is". Should the programs prove defective following their purchase, the buyer (and not this company, its distributor, or its dealer) assumes the entire cost of all necessary servicing, repair, and any incidental or consequential damages resulting from any defect in the software. Further, this company reserves the right to revise this publication and to make changes from time to time in the contents hereof without obligation to notify any person of such revision or changes.

The product you have purchased and the setup screen may appear slightly different from those shown in this QIG. For more detailed information about this product, please refer to the User Manual on the CD-ROM. The software and specifications are subject to change without notice. Please visit our web site www.edimax.com for the update. All rights reserved including all brand and product names mentioned in this manual are trademarks and/or registered trademarks of their respective holders.

Linux Open Source Code

Certain Edimax products include software code developed by third parties, software code is subject to the GNU General Public License ("GPL") or GNU Lesser General Public License ("LGPL"). Please see the **GNU** (www.gnu.org) and **LPGL** (www.gnu.org) Websites to view the terms of each license.

The GPL Code and LGPL Code used in Edimax products are distributed without any warranty and are subject to the copyrights of their authors. For details, see the GPL Code and LGPL Code licenses. You can download the firmware-files at <http://www.edimax.com> under "Download" page.

Product Introduction

Thank you for purchasing an Edimax product. This router is a cost-effective router, an ADSL2+ modem, Ethernet network switch and wireless access point (for wireless model only). You can surf the Internet and share the connection through the Edimax router without investing in other devices.

This router can support downstream transmission rates of up to 24Mbps and upstream transmission rates of up to 1Mbps. It supports PPPoA (RFC 2364 - PPP over ATM Adaptation Layer 5), RFC 1483 encapsulation over ATM (bridged or routed), PPP over Ethernet (RFC 2516), and IPoA (RFC1577) to establish a connection with ISP. The product also supports VC-based and LLC-based multiplexing.

With the web management interface, users can easily configure the various functions of the router including DHCP server, NAT, virtual server, DMZ, access control, IP filter, PPTP/IPSec/L2TP pass-through, DDNS, UPnP, and Wireless.

You can configure the router by running the Setup Wizard in the CD-ROM provided in the package. The wizard provides quick setup for the Internet connection, SSID, wireless security, firmware upgrade and changing router's password. When you start the Setup Wizard, you will get the following Welcome screen. Please choose the language to start with and follow the easy steps in the Wizard. No instruction for the Setup Wizard is given here.

If you lost the CD-ROM or you prefer the traditional web setup, please follow the procedures in this Quick Installation Guide to configure the router.



1. Minimum Requirements

The following devices are required to configure the ADSL2+ Router:

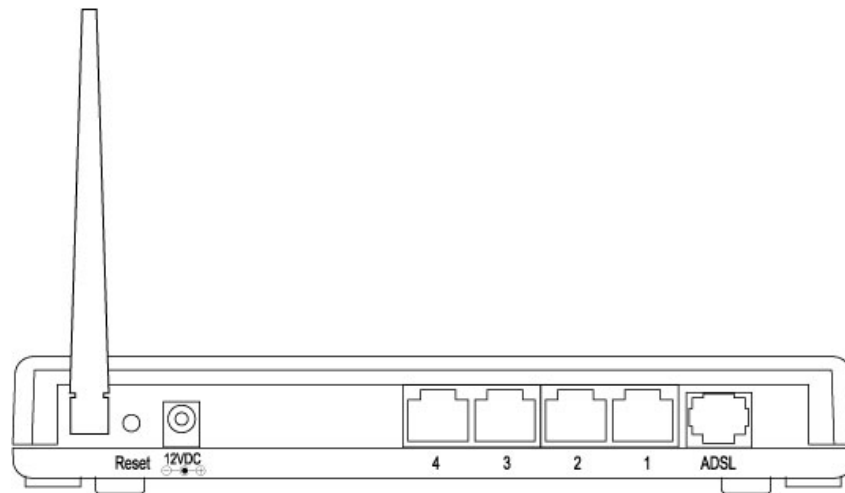
- A PC with an Ethernet Adapter and a Web-Browser (Internet Explorer 4.0 or higher)
- RJ-45 Ethernet cable
- RJ-11 Phone Line

2. Product Package

This package contains the following components:

- One ADSL2+ Router (Annex A or B)
- One Dipole Antenna ([only for wireless model](#))
- One Power Adapter
- One RJ-45 Ethernet Cable (100 cm)
- One RJ-11 Telephone Line (180 cm)
- One Quick Installation Guide
- One CD-ROM (Including the Setup Wizard, Multi-languages Quick Installation Guide and User Manual)

Rear Panel



1) Antenna Connector ([For wireless model only](#))

The antenna connector of the router is a reverse SMA connector. It allows you to connect an external antenna with reverse SMA connector to the router easily.

2) Reset

The Reset button can be used to reset the router or restore to factory defaults.

- If problems occur with your router, power it on and press the router's reset button with a pencil tip (for less than 5 seconds) and the router will reboot and , keeping all your current settings.

- If problems persisted or you forgot your router's password, press the reset button for 20 seconds with power on. The router will reset to the factory default settings. (**Warning:** all your current settings will be lost and replaced by the factory default settings)

3) Power Jack

Please plug-in the supplied power adapter to the ADSL Router's power jack. The power adapter is 12VDC,

4) Local Area Network (LAN)

The router's 4 LAN ports are where you connect your LAN's PCs, printer servers, hubs and switches etc.

5) ADSL



Connect the supplied RJ-11 telephone cable to this port and connect it to your ADSL/telephone socket .

Front LEDs

On the router's front panel, there are LED lights showing the router's current status. Below are the description and explanation of each LED.



WLAN  : For wireless model only

LED	Light Status	Description
PWR  (Green)	On	The router is ready
WLAN  (Orange)	Off	Wireless LAN is disabled
	Blinking	Wireless network traffic is transmitting
ADSL (Green)	On	Connected to an ADSL broadband connection successfully
	Blinking	No ADSL broadband connection
LAN (Port 1-4)	On	The LAN cable is connected to the router
	Blinking	Network traffic is transmitting through the LAN port

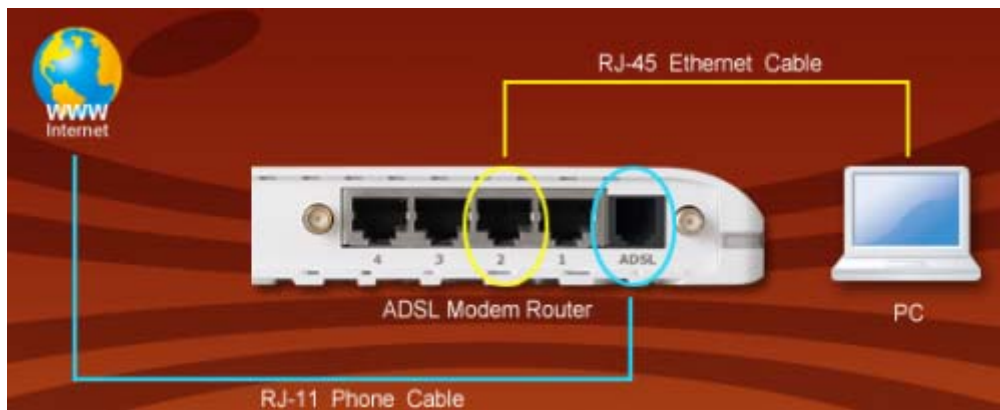
3. Install ADSL Router

Step 1. Connect the ADSL Line

Use the supplied RJ-11 telephone cable, connect the router from the ADSL port to your telephone socket with an ADSL micro filter plugged in.

Step 2. Connect the router to your LAN network

Connect the router to your PC, hub or switch by attached the Ethernet cable to the LAN port of the router.



Step 3. Connect the Power Adapter to the Router

Connect the power adapter to the power jack on the rear panel of the router and switch on the power.

Step 4. Check the ADSL LED light status

Please check the ADSL LED on the front panel. This light indicates the status of your ADSL broadband through your telephone line. If the light is on solid, you can continue the setup. However, if the light is flashing, there is no broadband line being detected. Therefore, please call your Internet Service Provider (ISP) and inform them about the flashing ADSL light.

Step 5. Firewall settings.

Please turn off all personal firewall before you continue the setup as they might block the communication of your PC and the router.

Note : *You must use the power adapter shipped along with the router, do NOT use any other power adapter from other sources.*

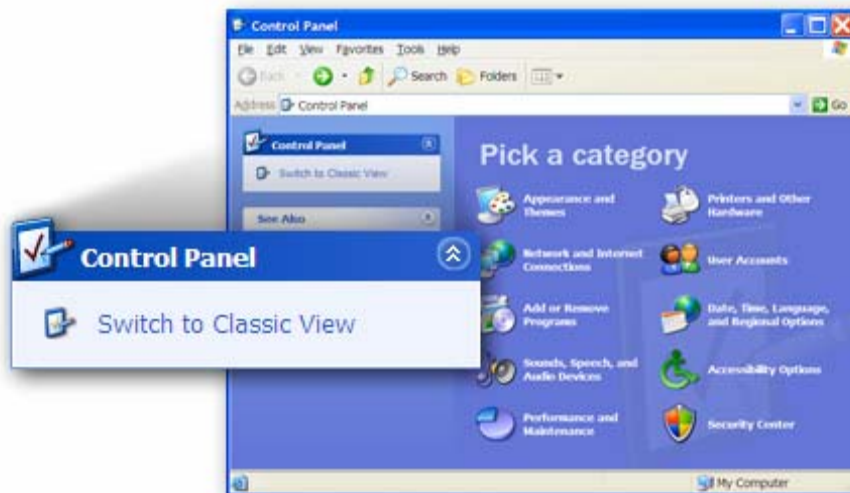
Step6 : PC LAN IP Configuration

1. Configure the PC LAN setting to automatically obtain an IP address from the router by following the below steps.

- Click **“Start”** in the task bar then select the **“Control Panel”** .



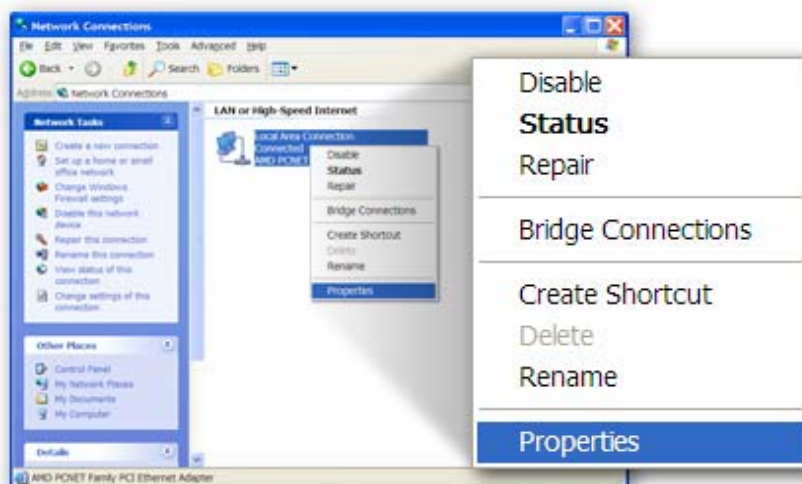
- Click **“Switch to Classic View”** on the left top to see more setting icons.



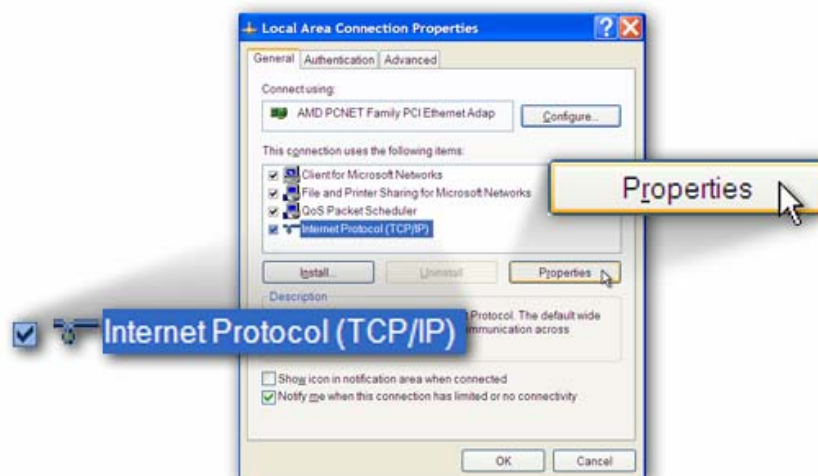
- Find an icon **“Network Connection”** then Double-Click to open the network connection setting.



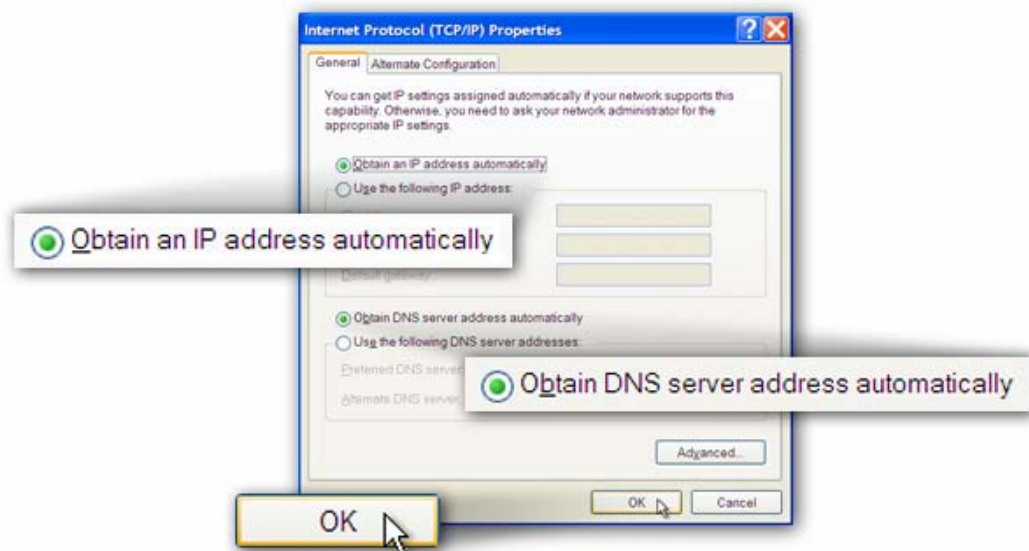
- You will see an icon **“Local Area Connection”**, select the icon then Right-Click the mouse to open the sub-menu and select the **“Properties”**



- Select the **“Internet Protocol (TCP/IP)”** then click the **“Properties”**



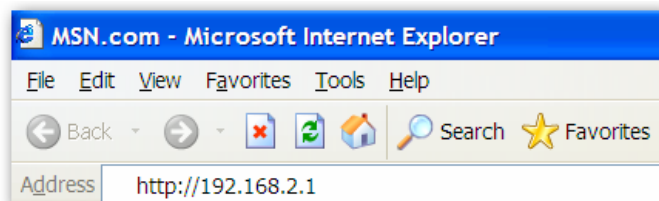
- Ensure the parameter marked in blue are checked in “**Obtain an IP address automatically**” and “**Obtain DNS server address automatically**” then press “**OK**” to close.



4. Internet Connection

If you lost your CD-ROM, you can configure this ADSL modem router via the following procedures. The procedures will guide you to login to your modem router using the Internet Explorer, so that you can set up the Internet connection and configure all others function.

1. Enter the router's default IP address: “**192.168.2.1**” into your PC's web browser and press “**enter**”.



2. The login screen below will appear. Enter the “User Name” and “Password” and click “**OK**” to login.

The default User name is “**admin**” and the Password is “**1234**”,



Connect to 192.168.2.1

Default: admin/1234

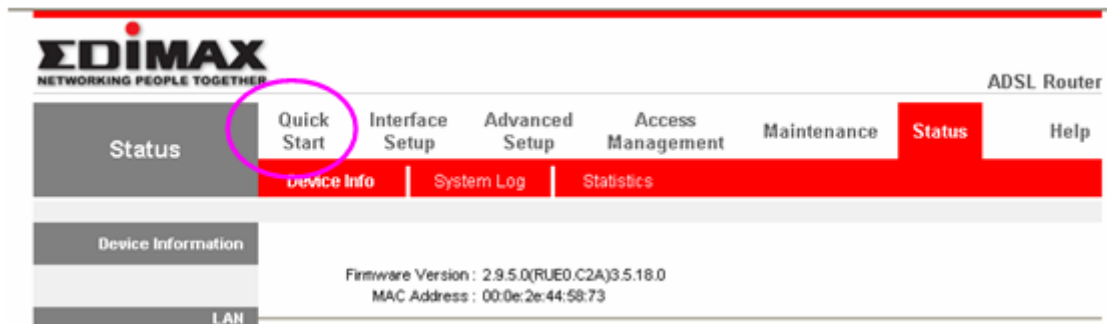
User name:

Password:

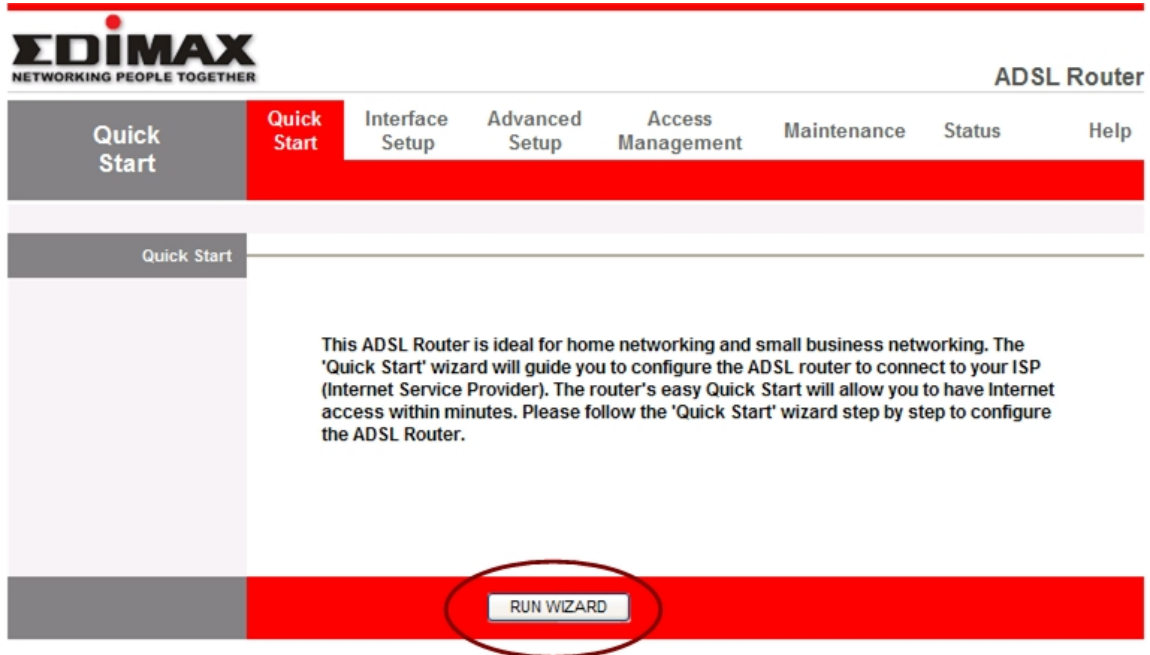
☐ Remember my password

OK Cancel

The main page will appear, click **“Quick Setup”** to setup the Internet connection.



Step 1: In the Quick Start, click “Run Wizard” to start the configuration.



Please follow the four steps in the setup wizard. Begin by clicking “Next”.



Quick Start

The Wizard will guide you through these four quick steps. Begin by clicking on **NEXT**.

- Step 1. Set your new password
- Step 2. Choose your time zone
- Step 3. Set your Internet connection
- Step 4. Re-start your ADSL router

[NEXT](#)[EXIT](#)

Step 2: Please enter the router's new password and confirm the new password again. If you wish to keep the router's default password, enter '1234' and confirm '1234'. Click "Next".



Quick Start - Password

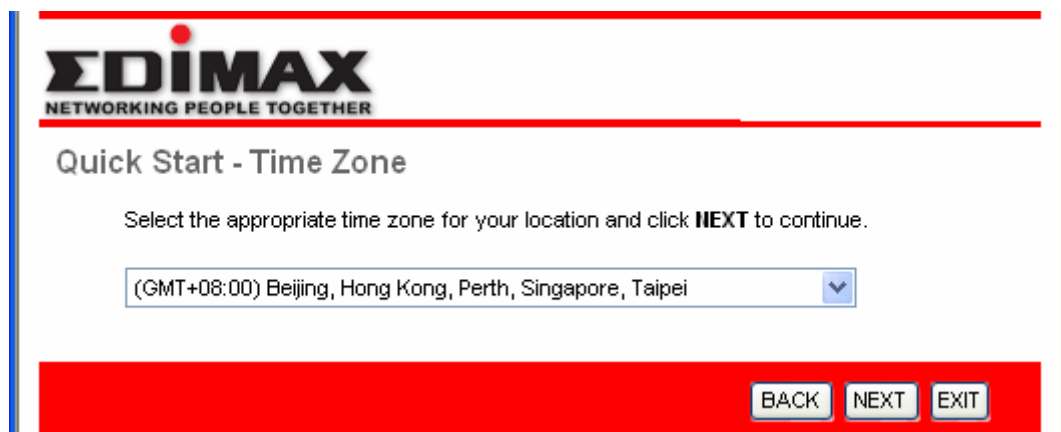
You may change the **admin** account password by entering in a new password. Click **NEXT** to continue.

New Password :

Confirmed Password :

[BACK](#)[NEXT](#)[EXIT](#)

Step 3: Please select the time zone where you are located. Click “Next”.



EDIMAX
NETWORKING PEOPLE TOGETHER

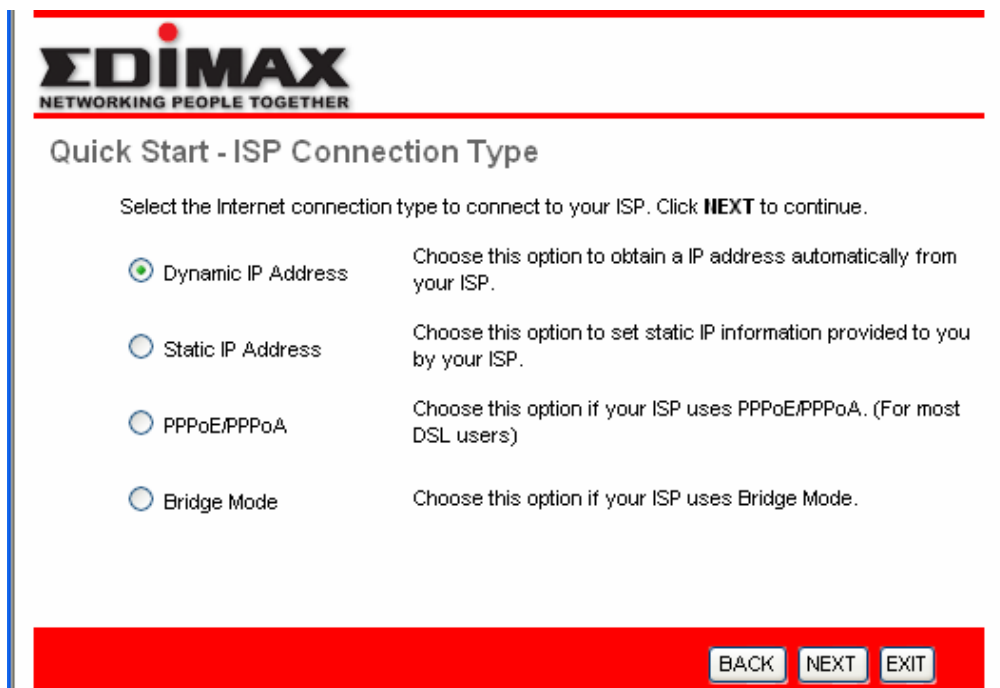
Quick Start - Time Zone

Select the appropriate time zone for your location and click **NEXT** to continue.

(GMT+08:00) Beijing, Hong Kong, Perth, Singapore, Taipei

BACK NEXT EXIT

Please select your ISP's Connection Type .



EDIMAX
NETWORKING PEOPLE TOGETHER

Quick Start - ISP Connection Type

Select the Internet connection type to connect to your ISP. Click **NEXT** to continue.


<input checked="" type="radio"/> Dynamic IP Address	Choose this option to obtain a IP address automatically from your ISP.
<input type="radio"/> Static IP Address	Choose this option to set static IP information provided to you by your ISP.
<input type="radio"/> PPPoE/PPPoA	Choose this option if your ISP uses PPPoE/PPPoA. (For most DSL users)
<input type="radio"/> Bridge Mode	Choose this option if your ISP uses Bridge Mode.

BACK NEXT EXIT

Step 4: Input the data supplied by your ISP

If you are not sure about the connection type, please contact your ISP. Wrong connection type will prevent you from connecting to the Internet.

The following is an example to setup 『Dynamic IP Address』 with VPI, VCI and Connection Type as follows:




EDIMAX
NETWORKING PEOPLE TOGETHER

Quick Start - Dynamic IP

Please select the dynamic connection provided to you by your ISP. Click **Next** to continue.

VPI: (0~255)

VCI: (1~65535)

Connection Type: 


BACK

NEXT

EXIT

Step 5: Re-start your ADSL router

Click “Next” to save the settings and please wait for the router to restart.



EDIMAX
NETWORKING PEOPLE TOGETHER

Quick Start Complete !!

The Setup Wizard has completed. Click on **BACK** to modify changes or mistakes. Click **NEXT** to save the current settings.

BACK

NEXT

EXIT

Click “Close” when changes have been saved successfully and the Internet will be connected.



EDIMAX
NETWORKING PEOPLE TOGETHER

Quick Start Completed !!

Saved Changes.

CLOSE

5. Wireless Setup (For Wireless Model only)

SSID is the name of the wireless router. You may change your SSID to a meaningful name so that you can identify your wireless router from others. You can use any alphanumeric characters, up to 32 characters. By default the ESSID is 'default'.

The screenshot shows the EDIMAX ADSL Router configuration interface. The top navigation bar includes 'Interface', 'Quick Start', 'Interface Setup', 'Advanced Setup', 'Access Management', 'Maintenance', 'Status', and 'Help'. Under 'Interface Setup', there are three sub-tabs: 'Internet', 'LAN', and 'Wireless', with 'Wireless' being the active tab. The left sidebar has three sections: 'Access Point Settings', 'Multiple SSIDs Settings', and 'Wireless MAC Address Filter'. The main content area is divided into these sections. In the 'Access Point Settings' section, 'Access Point' is set to 'Activated', 'Channel' is '11', and 'Current Channel' is '11'. Other settings like 'Beacon Interval', 'RTS/CTS Threshold', 'Fragmentation Threshold', 'DTIM', and '802.11 b/g' are also visible. In the 'Multiple SSIDs Settings' section, 'SSID Index' is '1', 'SSID' is 'default', 'Broadcast SSID' is 'Yes', and 'Authentication Type' is 'Disabled'. The 'Wireless MAC Address Filter' section is empty.

It's very important to set wireless security settings properly! If you don't, hackers and malicious users can reach your network and valuable data without your consent and this will cause serious security problem.

To secure your wireless network, please click "Interface Setup", then click "Wireless", and follow the following instructions to configure the wireless security settings:

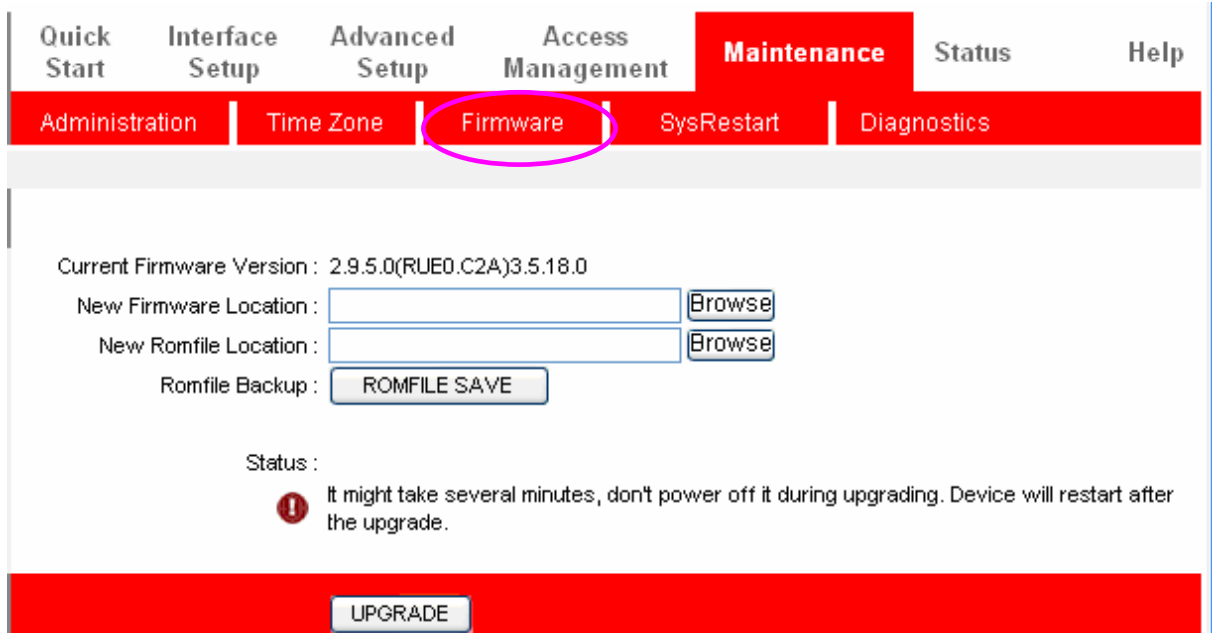
It's recommended to use WPA to protect your wireless router from hackers. Select Enabled WPA-PSK and enter the Pre-Share Key below.

Use 8-32 alphanumeric characters. Please remember this key, you need this key to connect to your wireless router wirelessly.

This close-up screenshot focuses on the 'Multiple SSIDs Settings' and 'WPA-PSK' sections. In the 'Multiple SSIDs Settings' section, 'SSID Index' is '1', 'SSID' is 'default', 'Broadcast SSID' is 'Yes', and 'Authentication Type' is 'WPA-PSK'. In the 'WPA-PSK' section, 'Encryption' is 'TKIP' and 'Pre-Shared Key' is an empty text field with a note '(8~63 characters)'.

6. Backup and Firmware Upgrade

To upgrade the firmware, please download the latest firmware from Edimax website. Save and unzip the firmware file to a directory in your computer.



The screenshot shows the Edimax router web interface. The top navigation bar includes 'Quick Start', 'Interface Setup', 'Advanced Setup', 'Access Management', 'Maintenance' (highlighted in red), 'Status', and 'Help'. Below this, a secondary navigation bar contains 'Administration', 'Time Zone', 'Firmware' (circled in pink), 'SysRestart', and 'Diagnostics'. The main content area displays the 'Current Firmware Version : 2.9.5.0(RUE0.C2A)3.5.18.0'. It has input fields for 'New Firmware Location' and 'New Romfile Location', each with a 'Browse' button. Below these is a 'Romfile Backup' section with a 'ROMFILE SAVE' button. A 'Status' section shows a warning icon and the text: 'It might take several minutes, don't power off it during upgrading. Device will restart after the upgrade.' At the bottom, there is a large red bar with a white 'UPGRADE' button.

Click on “Maintenance”>”Firmware”>”New Firmware Location”, click “Browse” to browse to the file firmware you have downloaded. Then, click “Upgrade” to upgrade.

It may take few minutes, don't power off the router while it's upgrading. The router will stop responding and then restarts automatically. The upgrade process will be completed after the restart.

7. Restart and Reset to Default Setting

If you found the router behaves strangely, you can perform a reset, sometimes it will solve the problem.

You can either reset your router without losing your current settings or restore to factory defaults. If you wish to reset the router to the factory default settings, select “Factory Default Settings” then click “Restart”. .

Alternatively, you can use the Reset button at the Real Panel of the router.

Quick Start	Interface Setup	Advanced Setup	Access Management	Maintenance	Status	Help
Administration	Time Zone	Firmware	SysRestart	Diagnostics		

System Restart with : ☒ Current Settings
☐ Factory Default Settings

RESTART

Note: Please refer to the User Manual in the CD-ROM for more details information on Internet connection type and to configure all others setting.

Federal Communication Commission Interference Statement

This equipment has been tested and found to comply with the limits for a Class B digital device, pursuant to Part 15 of FCC Rules. These limits are designed to provide reasonable protection against harmful interference in a residential installation. This equipment generates, uses, and can radiate radio frequency energy and, if not installed and used in accordance with the instructions, may cause harmful interference to radio communications. However, there is no guarantee that interference will not occur in a particular installation. If this equipment does cause harmful interference to radio or television reception, which can be determined by turning the equipment off and on, the user is encouraged to try to correct the interference by one or more of the following measures:

1. Reorient or relocate the receiving antenna.
2. Increase the separation between the equipment and receiver.
3. Connect the equipment into an outlet on a circuit different from that to which the receiver is connected.
4. Consult the dealer or an experienced radio technician for help.

FCC Caution

This device and its antenna must not be co-located or operating in conjunction with any other antenna or transmitter.

This device complies with Part 15 of the FCC Rules. Operation is subject to the following two conditions: (1) this device may not cause harmful interference, and (2) this device must accept any interference received, including interference that may cause undesired operation.

Any changes or modifications not expressly approved by the party responsible for compliance could void the authority to operate equipment.

Federal Communications Commission (FCC) Radiation Exposure Statement

This equipment complies with FCC radiation exposure set forth for an uncontrolled environment. In order to avoid the possibility of exceeding the FCC radio frequency exposure limits, human proximity to the antenna shall not be less than 2.5cm (1 inch) during normal operation.

Federal Communications Commission (FCC) RF Exposure Requirements

SAR compliance has been established in the laptop computer(s) configurations with PCMCIA slot on the side near the center, as tested in the application for Certification, and can be used in laptop computer(s) with substantially similar physical dimensions, construction, and electrical and RF characteristics. Use in other devices such a PDAs or lappads is not authorized.

This transmitter is restricted for use with the specific antenna tested in the application for Certification. The antenna(s) used for this transmitter must not be co-located or operating in conjunction with any other antenna or transmitter.

R&TTE Compliance Statement

This equipment complies with all the requirements of DIRECTIVE 1999/5/EC OF THE EUROPEAN PARLIAMENT AND THE COUNCIL of March 9, 1999 on radio equipment and telecommunication terminal Equipment and the mutual recognition of their conformity (R&TTE)

The R&TTE Directive repeals and replaces in the directive 98/13/EEC (Telecommunications Terminal Equipment and Satellite Earth Station Equipment) As of April 8, 2000.

Safety

This equipment is designed with the utmost care for the safety of those who install and use it. However, special attention must be paid to the dangers of electric shock and static electricity when working with electrical equipment. All guidelines of this and of the computer manufacture must therefore be allowed at all times to ensure the safe use of the equipment.

EU Countries Intended for Use

The ETSI version of this device is intended for home and office use in Austria, Belgium, Denmark, Finland, France, Germany, Greece, Ireland, Italy, Luxembourg, Bulgaria, Cyprus, Czech Republic, Estonia, Hungary, Latvia, Lithuania, Malta, Poland, Romania, Slovakia, Slovenia, the Netherlands, Portugal, Spain, Sweden, and the United Kingdom.

The ETSI version of this device is also authorized for use in EFTA member states: Iceland, Liechtenstein, Norway, and Switzerland.

EU Countries not intended for use

None

A declaration of conformity is available on www.edimax.com





EDIMAX Technology Co., Ltd.

www.edimax.com