

MiFi™ 2352/2372



quick
start
guide



©2009. Novatel Wireless, Inc. All rights reserved.

PN 90026064 R2

MiFi, the MiFi Logo, Novatel Wireless and the Novatel Wireless logo are all trademarks of Novatel Wireless, Inc. All other trademarks are the property of their respective owners.

totalmobileinternet®

MiFi™ is the world's first and smallest intelligent mobile hotspot. Surf the web, download files and music, share and swap photos with the built-in microSDHC™ reader, manage email and more at speeds of up to 7.2 Mbps download and 5.76 Mbps upload.

MiFi delivers the ultimate in personal freedom. Share a connection with up to five Wi-Fi enabled devices and access mobile broadband networks HSPA, UMTS, EDGE, and GPRS in North America, Europe and Asia-Pacific*.

Review the next few sections and you will soon be on your way to experiencing the freedom of total mobile internet.

NOTE

This is a Quick Start Guide. For complete details and information regarding the use of your device, accessories, and safety and regulatory information, please consult the User Guide at www.novatelwireless.com

DO NOT CONNECT THE DEVICE TO YOUR COMPUTER UNTIL YOU HAVE REVIEWED THE STEPS OUTLINED IN THIS QUICK START GUIDE.

*Subject to network operator roaming agreements

System Requirements

- Windows® 2000, XP, Vista; Mac OS® X (10.4.7+); Linux® (2.4, 2.6)*
- 100 MB Hard Drive Space
- 128 MB of RAM
- For Wi-Fi connection: Device supporting Wi-Fi 802.11 b/g and an Internet browser
- For USB connection: USB 2.0 port

Contents

- MiFi Intelligent Mobile Hotspot
- USB cable
- Rechargeable lithium ion battery
- A/C charger
- Quick Start Guide

NOTE

For more information on the details of your device and accessories, consult the User Guide at www.novatelwireless.com

*Visit www.novatelwireless.com for configuration details

MiFi



- **Power Button / Connection LED**
Powers the device on and off. The LED provides connection and battery status. See page 10 for a detailed list of the colours and their defined states.
- **microSDHC Slot**
Removable memory storage slot supports microSDHC cards up to 16GB.
- **microUSB Port**
The USB cable, A/C charger, and optional car charger connect here.
- **Wi-Fi LED**
Provides the status of the Wi-Fi connection.

MiFi



- **Battery and SIM Compartment**
The battery and SIM card are placed here.
- **SIM Card Slot**
The SIM card is inserted here.
- **Master Reset Button**
Resets device to default/factory settings.

Getting Started

Insert SIM Card and Battery

Before connecting MiFi to your computer for the first time, you must insert the SIM card supplied by your wireless carrier, then insert and charge the battery.

- 1 Slide open the door at the bottom of the device.
- 2 Insert the SIM card into the SIM slot as shown.



- 3 Now, insert the battery, lining up the contact points as shown and replace the door back on the device.



Getting Started

Charge the Battery

Connect the A/C charger to MiFi and charge for a minimum of 4 hours before use. The LED will flash amber while the device is charging and glow solid amber once charging is complete.

For more information on charging the battery, please see the user guide at www.novatelwireless.com

IMPORTANT: When installing or replacing a battery, or inserting or replacing the SIM card, ensure that the MiFi device is not connected to your computer with the USB cable or a USB power supply. Before using MiFi, review the Battery Tips and Safety disposal instructions in the Regulatory section beginning on page 16.

Connect (Operating Mode)

Wi-Fi Mode
(Connect up to 5 Wi-Fi devices)

Connect to MiFi via Wi-Fi

- 1 Press the Power button on your MiFi. The Power/Connection LED and Wi-Fi LED illuminate.
- 2 Your MiFi is pre-configured with WPA Wi-Fi encryption to protect unauthorized access to your mobile broadband service. The unique SSID and security key are printed on the inside of the battery door.
- 3 Use your normal Wi-Fi application to connect to your MiFi. Find the SSID in your list of available networks and click **Connect**.
- 4 To change the settings of your MiFi, open your Internet browser and enter **http://192.168.1.1** to access the Web settings. Enter the password **admin** and click **Login**.

NOTE

Mobile Broadband access when roaming internationally is disabled as default in the settings menu. To enable international roaming, login to your MiFi settings menu and go to **Internet>Internet Settings**. For more details on device setup consult the User Guide found at www.novatelwireless.com

Connect (Operating Mode)

USB Modem Mode
(Connects one computer only)

USB modem mode allows MiFi to operate as a conventional USB modem with Wi-Fi disabled. To operate in this mode you must first install the MobiLink software and drivers.

Connect MiFi via USB Cable

NOTE

When connected in USB modem Mode, MiFi is connected to your computer with the USB Cable and Wi-Fi is disabled. The Wi-Fi LED does not illuminate.

- 1 Insert the microUSB end of the USB cable into MiFi and the other end into a USB port on your computer.
- 2 Only the Power/Connection LED on the device illuminates.
(See page 10 for a detailed description of MiFi LED States.)
- 3 Launch MobiLink and Connect.
(MobiLink software and drivers for Windows automatically install upon connecting in USB modem mode for the first time.)

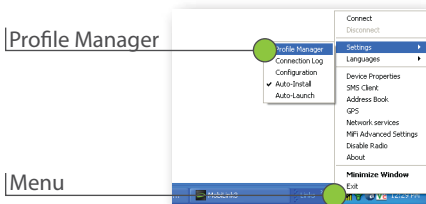
MobiLink 3 (optional) Installation

Windows®

- » Turn on your computer and close all open applications.
- » Power MiFi in USB Modem Mode (see page 7).

Windows - MobiLink

- 1 MobiLink software and drivers for Windows automatically install.
- 2 Launch MobiLink and click the **Menu** Icon. Select **Profile Manager**.



Select an existing profile, or click **New**, enter a Profile Name and APN*, then click **Next**. Enter your Username* and Password*, if required, and click **Finish**.

- 3 Click **Connect**.

*Available from your service provider

MiFi Drivers (optional) Installation

Mac®

- » Turn on your computer and close all open applications.
- » Power MiFi in USB Modem Mode (see page 7).







Mac - Internet Connect

- 1 Two files appear on the Mac desktop, Instructions.pdf and Driver_Installer.app.
- 2 Follow the instructions outlined in the Instructions.pdf file for the full installation procedure.


The Basics

Power/Connection LED States
Wi-Fi LED States

Power/Connection LED

No Light		No Power	—	Device is powered off
RED		Error	Flashing:	Low battery
			Solid:	Device error (See Common Problems and Solutions in the User Guide)
AMBER		Battery	Flashing:	Battery charging
			Solid:	Battery fully charged
GREEN		GPRS / EDGE	Flashing:	GPRS/EDGE service is available
			Solid:	Connected to a network using GPRS/EDGE
BLUE		UMTS	Flashing:	UMTS service is available
			Solid:	Connected to a network using UMTS
VIOLET		HSPA	Flashing:	HSPA service is available
			Solid:	Connected to a network using HSPA

Wi-Fi LED

BLUE		Wi-Fi	No Light:	Wi-Fi is off or MiFi plugged into USB port
			Flashing:	On and connected
			Solid:	On with no users connected

The Basics

Caring for Your Device

- Avoid storing your device in extreme temperatures.
- Store your device in a dry and clean environment.
- Avoid spilling any liquid on your device or immersing it in water.
- Do not place any labels on the device as doing so could alter the sensitivity of the antenna.
- Do not force the cable into the USB port.
- Do not force the SIM card into the SIM card slot.
- Do not force the microSDHC card into the microSDHC slot.
- Do not apply force to the top or bottom of your device.
- Detach the USB Cable from MiFi before transport.

NOTE

Please consult the User Guide for complete regulatory and safety information, available at www.novatelwireless.com

Regulatory Information

CE Marking
FCC Notice
Safety Notice
Battery Tips and Disposal

CE Marking

This device has been tested to and conforms to the essential regulatory requirements of the European Union R&TTE directive 1999/5/EC and has attained CE Marking.

Federal Communications Commission Notice (FCC United States)

This equipment has been tested to, and found to be within the acceptable limits for a Class B digital device, pursuant to part 15 of the FCC Rules and Industry Canada ICES-003. These limits are designed to provide reasonable protection against harmful interference when the equipment is operated in a residential environment.

This equipment generates radio frequency energy and is designed for use in accordance with the manufacturer's user manual. However, there is no guarantee that interference will not occur in any particular installation.

If this equipment causes harmful interference to radio or television reception, which can be determined by turning the equipment off and on, you are encouraged to try to correct the interference by one or more of the following measures:

Regulatory Information

- Reorient or relocate the receiving antenna.
- Increase the separation between the equipment and the receiver.
- Connect the equipment into an outlet on a circuit different from that to which the receiver is connected.
- Consult the dealer or an experienced radio/television technician for help.

This device complies with Part 15 of the Federal Communications Commission (FCC) Rules and Industry Canada ICES-003 for EMI compliance.

Operation is subject to the following two conditions:

- This device may not cause harmful interference.
- This device must accept any interference received, including interference that may cause undesired operation.

WARNING: DO NOT ATTEMPT TO SERVICE THE WIRELESS COMMUNICATION DEVICE YOURSELF. SUCH ACTION MAY VOID THE WARRANTY. THE OVATION DEVICE IS FACTORY TUNED. NO CUSTOMER CALIBRATION OR TUNING IS REQUIRED. CONTACT YOUR SERVICE PROVIDER FOR INFORMATION ABOUT SERVICING YOUR WIRELESS COMMUNICATION DEVICE.

Regulatory Information

Notice to Consumers: Any changes or modification not expressly approved by the party responsible for compliance could void the user's authority to operate this equipment.

NOTE: The Radio Frequency (RF) emitter installed in your device must not be located or operated in conjunction with any other antenna or transmitter, unless specifically authorized by Novatel Wireless Technologies.

MODIFICATIONS: The FCC requires that you be notified that any changes or modifications made to this device that are not expressly approved by Novatel Wireless, Inc. may void your authority to operate the equipment.

This device is only authorized for use in Mobile applications. At least 20 cm (8 inches) of separation between the antenna and the users body must be maintained at all times.

Regulatory Information

Safety Notices

Do not operate your device in any area where medical equipment, life support equipment, or near any equipment that may be susceptible to any form of radio interference. In such areas, the host communications device must be turned off. The MiFi may transmit signals that could interfere with this equipment.

On an aircraft, either on the ground or airborne

In addition to FAA requirements, many airline regulations state that you must suspend wireless operations before boarding an airplane. Please ensure that both MiFi and the host device are turned off and that the MiFi USB Cable is removed from the USB ports prior to boarding aircraft in order to comply with these regulations. MiFi can transmit signals that could interfere with various onboard systems and controls.

While operating a vehicle

The driver or operator of any vehicle should not operate a wireless data device while in control of a vehicle. Doing so will detract from the driver or operator's control and operation of that vehicle. In some countries, operating such communications devices while in control of a vehicle is an offense.

Regulatory Information

Battery tips

You will need to install and charge the battery as described on pages 4 and 5. Some batteries perform best after several full charge/discharge cycles. Battery life depends on the network, signal strength, temperature, features, and accessories you use.

- Always use Novatel Wireless original batteries and chargers. The warranty does not cover damage caused by non-Novatel Wireless batteries and/or chargers.
- New batteries or batteries stored for a long time may take more time to charge.
- When charging your battery, keep it near room temperature.
- When storing your battery, keep it uncharged in a cool, dark, dry place.
- Never expose batteries to temperatures below -10°C (14°F) or above 45°C (113°F).
- Never leave the device in an unattended vehicle due to uncontrollable temperatures that may be outside the desired temperature for this device.
- It is normal for batteries to gradually wear down and require longer charging times.
- If you notice a change in your battery life, it is probably time to purchase a new battery.

Regulatory Information

Proper Battery Use and Disposal

Contact your local recycling center for proper battery disposal.

WARNING: Never dispose of batteries in a fire because they may explode.

IMPORTANT: In event of a battery leak:

- Do not allow the liquid to come in contact with the skin or the eyes. If contact has been made, wash the affected area with large amounts of water and seek medical advice.
- Seek medical advice immediately if a battery has been swallowed.
- Communicate the appropriate steps to be taken if a hazard occurs.

Regulatory Information

Please review the following guidelines for safe and responsible battery use:

- Do not disassemble or open, crush, bend or deform, puncture, or shred.
- Do not modify or remanufacture, attempt to insert foreign object into the battery, immerse or expose to water or other liquids, or expose to fire, explosion, or other hazard.
- Only use the battery for the system for which it was specified.
- Only use the battery with a charging system that has been qualified with the system per this standard. Use of an unqualified battery or charger may present a risk of fire, explosion, leakage, or other hazard.
- Do not short circuit a battery or allow metallic or conductive object to contact the battery terminals.
- Replace the battery only with another battery that has been qualified with the system per this standard. Use of an unqualified battery may present a risk of fire, explosion, leakage, or other hazard.
- Promptly dispose of used batteries in accordance with local regulations.
- Battery usage by children should be supervised.
- Avoid dropping the device or battery. If the device or the battery is dropped, especially on a hard surface, and the user suspects damage, take it to a service centre for inspection.
- Improper battery use may result in a fire, explosion, or other hazard.