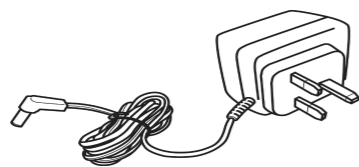


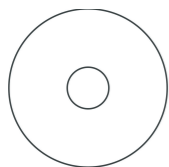
What's in the box



Wireless router



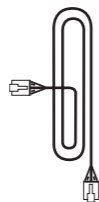
Power adapter



Installation CDROM



Quick start guide



Ethernet cable

What else will you need



A desktop or a laptop with free USB port



A modem



A web browser



An Internet connection

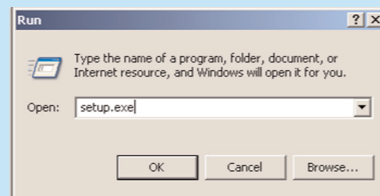
1 Install

A Insert installation CD



- Insert the installation CD into the PC's CD ROM (or DVDROM) drive
- > The installation program will start automatically
- Follow instructions on the screen

If for some reason the installation does not start automatically:



- Click on Windows **START** and then **RUN**
- Type **explorer** and navigate to the CD ROM (or DVDROM) drive
- Double-click on **Setup.exe**

B Choose your language



By default, the language of your operating system will be chosen, but you have 10 seconds if you want to select another one.

- Click on the required language
- > The next screen will be displayed automatically

C Choose your product

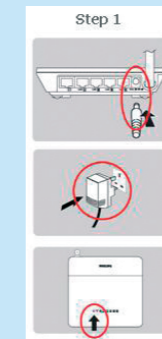


- Click on the picture of the SNB5600 Wireless Router
- > The next screen will be displayed automatically

2 Connect

Follow instructions on the screen

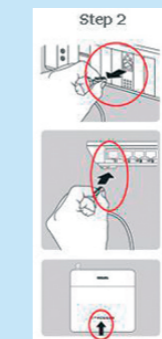
A Connect power adapter



- Connect the supplied power adapter to the 9V DC port on the router
- Connect the power plug to the electricity supply socket
- > Power light will turn on

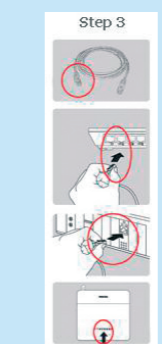
Move your mouse over the red circles on your screen to enlarge pictures

B Connect the modem to the router

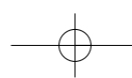


- If your computer is already connected via Ethernet, then disconnect this cable from your computer
- Connect this Ethernet cable to the WAN port of the SNB5600
- > WAN light will turn on

C Connect the router to the PC



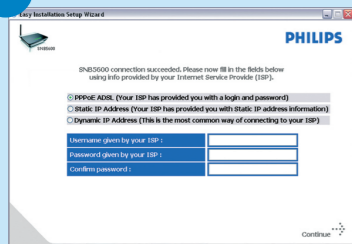
- Take the Ethernet cable provided in the box
- Connect this Ethernet cable to LAN 1 port on the SNB5600
- Connect the other side of the Ethernet cable to your computer
- > LAN 1 light will turn on
- Then click on **Continue**
- > A progress bar screen will be displayed



3 Enjoy

Depending on your modem settings, you might have the following screen displayed.

D Enter Internet Service Provider settings



- Fill in the fields using the information provided by your Internet Service Provider
- Click on **Continue**
- > A progress bar screen will be displayed, your settings will be saved and you will be connected to Internet
- > The next screen will be displayed

E Connected to Internet

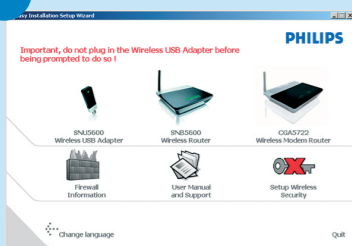


Once the installation completed, the following screen will be displayed.

- Click on **Menu** if you want to go back to the menu screen

Your WiFi network is running but not secured.

F Secure your network



- Click on **Set Encryption**
- > Your WiFi network will be secured by generating automatically an Encryption key and a network name (SSID)

At any time you can retrieve your wireless security settings using your installation CDROM on the computer where you installed your gateway and by clicking on the security icon of the menu page.

A Open Internet browser



B Open Internet address



- Enter Internet address
For example: www.philips.com
- Select **GO**

Wireless freedom

Enjoy the freedom of wireless networking. Your computer is now ready for full use anywhere in your home.

Welcome to Philips!

Register your product and get support at www.philips.com/welcome

SNB5600



Quick Start Guide

1 Install

2 Connect

3 Enjoy

PHILIPS

