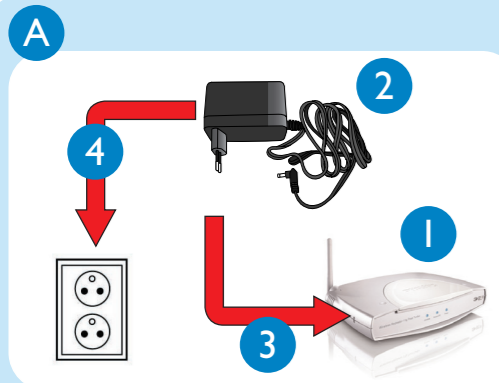
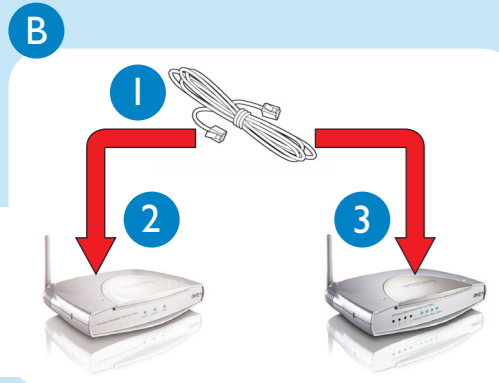


# 1 Connect



## Connect power Adapter

1. Attach the Antenna on the SNR6500
2. Take the power adapter
3. Plug the connector into **5V=1A** port on SNR6500
4. Plug the adapter into the power outlet



## Connect to Base Station

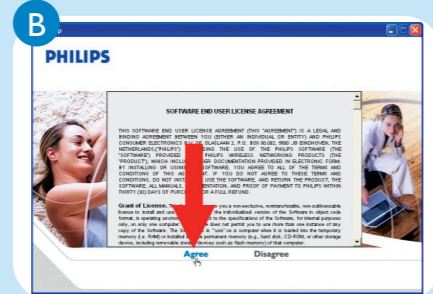
1. Take Ethernet cable
2. Connect the Ethernet cable to **To Modem/PC** port of the SNR6500
3. Connect the other end of the ethernet cable to a LAN port of the previously installed Wireless Base Station (LAN1-LAN4)

# 2 Install Wireless Range Extender



## Insert Installation CD

Place the installation CD in the CD-drive



## Agree License Agreement

Click **Agree**

If this screen does not appear, start the CD manually

- Open **My Computer**
- Open **CD-Drive**
- Open **Setup.exe**



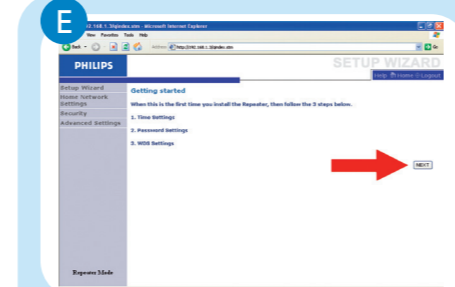
## Select Wireless Range Extender

Click on the SNR6500 image



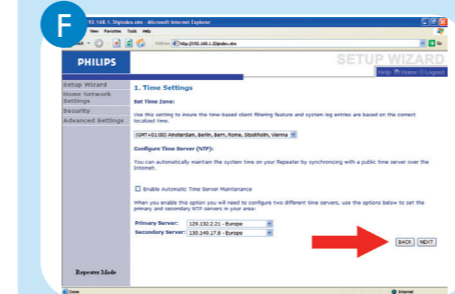
## Start installation software

Click on **Install software**



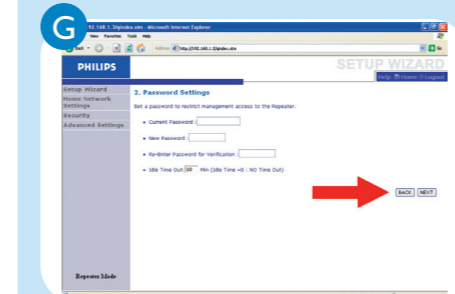
## Getting Started

Click **NEXT**



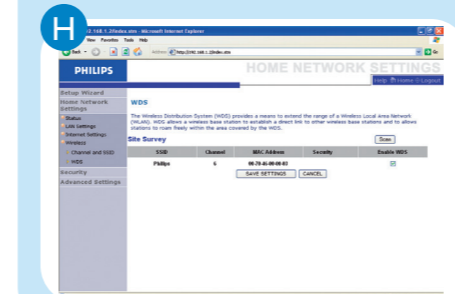
## Time settings

Click **NEXT**



## Password Settings

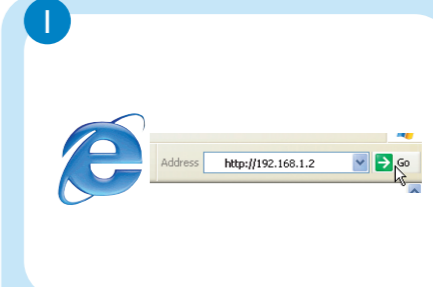
Click **NEXT**



## WDS Settings

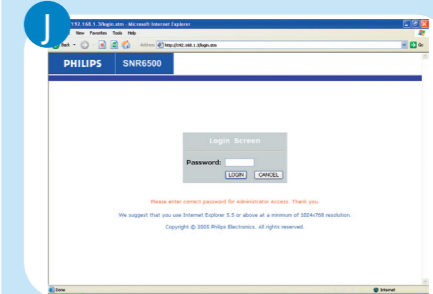
1. Press **Scan**
2. Checkmark the **Enable WDS** box behind your Wireless Base Station
3. Click **Save Settings**

# 2 Install Wireless Base Station



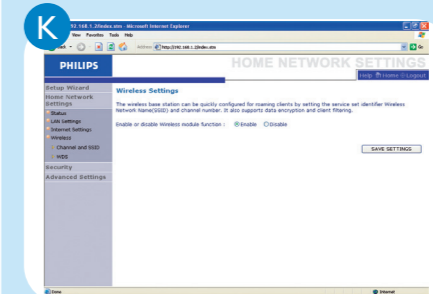
## Setting Wireless Base Station

1. Open Internet Browser
2. Enter **http://192.168.1.2** in the address bar
3. Click **Go**.



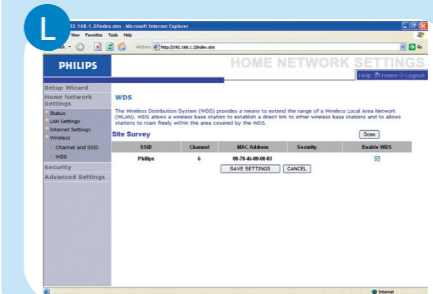
## Login

Click **Login**  
(Enter password if set)



## Home Network Settings

- Click **Home Network Settings**
- Click **Wireless**
- Click **WDS**



## WDS Settings

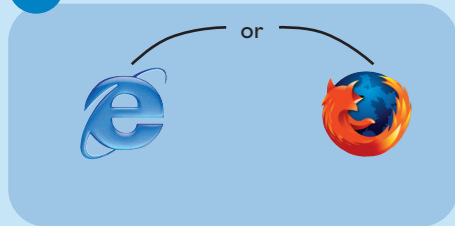
- Click **Scan**
- Checkmark the **Enable WDS** box behind your Wireless Range Extender
- Click **Save Settings**

# 3 Enjoy

## Share broadband Internet throughout the home

Follow these simple steps to connect to the Internet.

### A Open Internet browser



### B Open Internet address



1. Enter **Internet address**  
For example: www.philips.com
2. Select **Go**

### Wireless freedom

Enjoy the freedom of wireless networking. Your computer is now ready for use in multiple rooms of your home

For additional help read the manual on the CDROM.



Need help?  
User manual

See the user manual that came with your Wireless Base Station

Online help: [www.philips.com/support](http://www.philips.com/support)

### Helpline

<b>België/Belgique/Belgien</b>	070 253 010 (€ 0.17)
<b>Cyprus</b>	800 92256
<b>Danmark</b>	3525 8761
<b>Deutschland</b>	0180 5 007 532 (€ 0.12)
<b>España</b>	902 888 785 (€ 0.15)
<b>France</b>	08 9165 0006 (€ 0.23)
<b>Ελλάδα</b>	0 0800 3122 1223
<b>Ireland</b>	01 601 1161
<b>Italia</b>	199 404 042 (€ 0.25)
<b>Luxemburg/Luxembourg</b>	26 84 30 00
<b>Nederland</b>	0900 0400 063 (€ 0.20)
<b>Norge</b>	2270 8250
<b>Österreich</b>	01 546 575 603 (low rate)
<b>Portugal</b>	2 1359 1440
<b>Schweiz/Suisse/Svizzera</b>	02 2310 2116
<b>Suomi</b>	09 2290 1908
<b>Sverige</b>	08 632 0016
<b>UK (United Kingdom)</b>	0906 1010 017 (£ 0.15)

Specifications are subject to change without notice.  
Trademarks are the property of Koninklijke Philips Electronics N.V. or their respective owners.  
2005 © Koninklijke Philips Electronics N.V. All rights reserved.

www.philips.com  
QSG-SNR6500-ENG-V1.0

Wireless Range Extender  
English

SNR6500

# Welcome

## Quick Start Guide

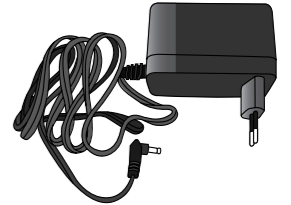
- 1 Connect
- 2 Install
- 3 Enjoy



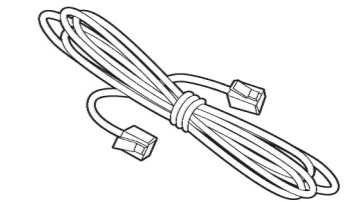
## What's in the box



Wireless Range extender



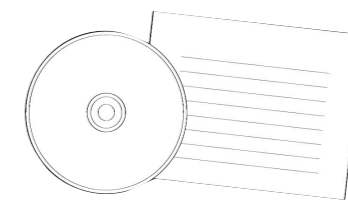
Power Adapter



Ethernet cable



Antenna



Installation on CD

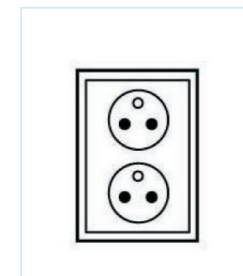


Quick Start Guide

### What else you'll need



Computer



Power outlet



Wireless Base Station