

PROLINK®

www.prolink2u.com

MODEL NO:
PRN2001



Quick Installation Guide

Wireless-N Broadband AP/ Router

Version 1.00

([English](#) / [Indonesian](#))

BEFORE GETTING STARTED

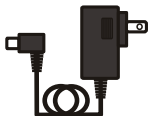
This document is designed to aid you to get started with the device. If you experience problems following these guides or need further information pertaining to the device, please visit our website at www.prolink2u.com. All specifications are subject to the manufacturer's configuration at the time of shipping and may change without prior notice, written or otherwise.

1. Package Contents

1



2



3



4



Items:

- 1 One (1) unit of PROLiNK® PRN2001
- 2 One (1) unit of Power Adapter
- 3 One (1) piece of RJ45 cable
- 4 One (1) piece of Quick Installation Guide (QIG)

Note:

1. The illustrations in this document may appear different from your model.
2. If any of above item is not packed in your package when open, please consult your reseller immediately.

2. Application Diagram

2.1 Connection via ADSL Modem



2.2 Connection via Cable Modem



3. Hardware Connection

- 3.1** Connect one end of the Ethernet cable to the LAN port (orange color) of the PRN2001 Wireless Router, another end to your PC or Notebook.



- 3.2** Finally, connect the PRN2001 Wireless Router with power adapter to a power outlet.

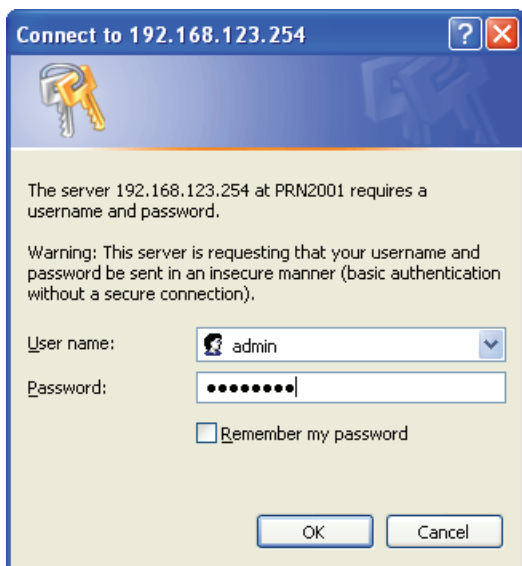
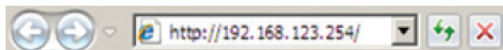


4. Router Configuration

Step 1

Start a web browser, type IP address 192.168.123.254 into address box, will prompt you to enter username and password on the login screen.

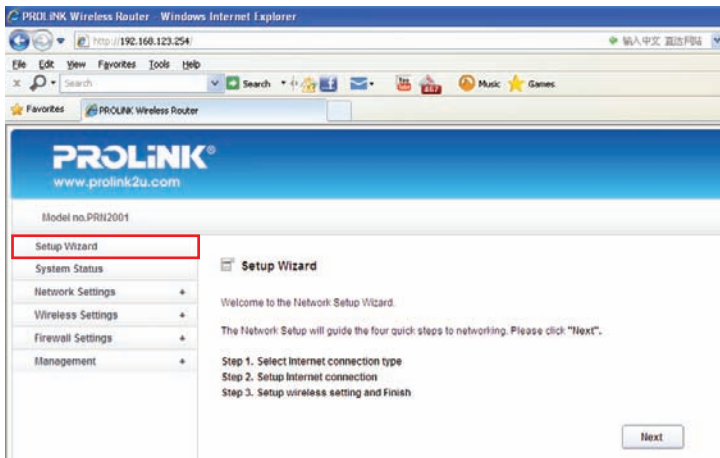
- Default username is admin
- Password is password



4. Router Configuration

Step 2

Click Setup Wizard item that will provide a primary configuration of the PRN2001 Wireless Router.



4. Router Configuration

Step 3

Select Connection (WAN) Type according to your Internet Service Provider. (ISP)

3.1 For **Cable Internet** users, select Dynamic IP Address and click Next Button.

PROLINK Wireless Router - Windows Internet Explorer

http://192.168.1.23.254

File Edit View Favorites Tools Help

Search

PROLINK Wireless Router

PROLINK
www.prolink2u.com

Model no. PRH2001

Setup Wizard

System Status

Network Settings

Wireless Settings

Firewall Settings

Management

Setup Wizard

Select WAN Type
Select the connection method to connect to your ISP. Click "Next" to continue.

Dynamic IP Address Obtain an IP address from your ISP.

Static IP Address Set static IP information provided to you by your ISP.

PPPoE Choose this option if your ISP uses PPPoE.

Back Next Exit

4. Router Configuration

For some cable modem users, may need to Clone MAC Address, please click the Clone button to proceed to the next step. (Optional)

Model no.PRN2001

- Setup Wizard
- System Status
- Network Settings *
- Wireless Settings *
- Firewall Settings *
- Management *

Setup Wizard

Set dynamic IP address
Please enter a particular host name or host-specific MAC addresses. Use the button to copy the MAC address of the Ethernet Card and replace the WAN MAC address with the MAC address of the router. Click "Next" to continue.

Host Name: (Optional)

MAC Address: (Optional)

4. Router Configuration

3.2 For **Static IP** users, select Static IP Address and enter related IP info.

PROLINK Wireless Router - Windows Internet Explorer
http://192.168.123.254

Model no.PRN2001

Setup Wizard

System Status

Network Settings +

Wireless Settings +

Firewall Settings +

Management +

Setup Wizard

Set static IP address
Set static IP information provided to you by your ISP. Click "Next" to continue.

WAN IP Address	<input type="text" value="192.168.1.20"/>
WAN Subnet Mask	<input type="text" value="255.255.255.0"/>
WAN Gateway	<input type="text" value="192.168.1.1"/>
Primary DNS Address	<input type="text" value="166.21.83.88"/>
Secondary DNS Address	<input type="text"/> (Optional)

Back Next Exit

4. Router Configuration

3.3 For **ADSL** users, select PPPoE and enter the user account info provided by ISP.

Model no. PRH2001

- Setup Wizard
- System Status
- Network Settings *
- Wireless Settings *
- Firewall Settings *
- Management *

Setup Wizard

PPPoE Settings
The service name is optional, but if your ISP requires this information, please enter the appropriate value. Click "Next" to continue.

User Account	<input type="text" value="prolink@singnet"/>
User Password	<input type="password" value="*****"/>
Confirm Password	<input type="password" value="*****"/>
Service Name	<input type="text"/> (Optional)

4. Router Configuration

Step 4

For Wireless Settings, you can change the default Network Name (SSID) to your desired SSID if you like. Enter your desired wireless password in Pass Phrase e.g 12345678 (must be a minimum of 8 characters). Click Finish Button to save and reboot the router.

The screenshot shows a web browser window displaying the configuration interface for a PROLINK Wireless Router. The browser's address bar shows the URL `http://192.168.123.254/`. The page title is "PROLINK Wireless Router - Windows Internet Explorer". The main content area features the PROLINK logo and the website address `www.prolink2u.com`. Below the logo, it indicates the model number "Model no.PRN2001". A navigation menu on the left lists various settings: Setup Wizard, System Status, Network Settings, Wireless Settings, Firewall Settings, and Management. The "Setup Wizard" section is active, showing a "Wireless Setting" step. A text instruction reads: "Click 'Back' to back to previous steps to change the settings after the completion of the Connection Wizard. Click 'Finish' to save the current settings and will reboot PROLINK Wireless Access Point." Two input fields are present: "Network Name(SSID)" with the value "PROLINK_FRN2001" and "Pass Phrase" with the value "12345678". At the bottom right, there are three buttons: "Back", "Finish", and "Exit".

1. Package Contents



Items:

1. Satu (1) unit of PROLiNK® PRN2001
2. Satu (1) unit of Power Adapter
3. Satu (1) buah kabel RJ45
4. Satu (1) buah Lembar Panduan Instalasi

Catatan:

1. Ilustrasi dalam dokumen ini mungkin tampak berbeda dari model Anda.
2. Jika salah satu item di atas tidak dikemas dalam paket Anda ketika terbuka, silakan berkonsultasi reseller Anda segera.

2. Diagram Aplikasi

2.1 Koneksit melalui Modem ADSL



2.2 Koneksi melalui Cable Modem

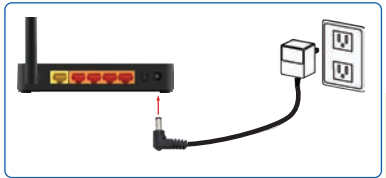


3. Koneksi Hardware

- 3.1** Hubungkan salah satu ujung Ethernet kabel ke port LAN (warna oranye) dari Wireless PRN2001 Router, ujung lainnya ke PC Anda atau Notebook.



- 3.2** Akhirnya, hubungkan PRN2001 Wireless Router dengan daya adaptor ke stopkontak.

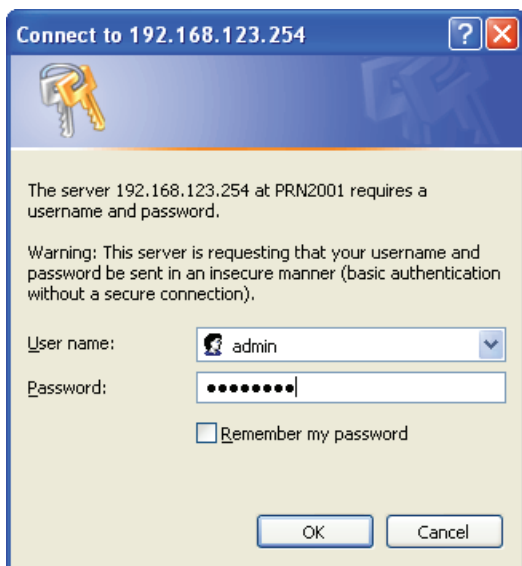
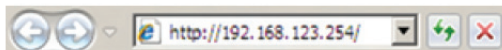


4. Konfigurasi Router

Langkah 1

Jalankan web browser, ketik alamat IP 192.168.123.254 ke dalam kotak alamat, lalu akan meminta Anda untuk memasukkan username dan password pada layar login.

- Username default adalah admin
- Password adalah password



4. Konfigurasi Router

Langkah 2

Klik Setup Wizard yang akan memberikan konfigurasi utama dari PRN2001 Wireless Router.

PROLINK Wireless Router Windows Internet Explorer

http://192.168.123.254

PROLINK Wireless Router

www.prolink2u.com

Model no.PRN2001

- Setup Wizard
- System Status
- Network Settings +
- Wireless Settings +
- Firewall Settings +
- Management +

Setup Wizard

Welcome to the Network Setup Wizard.

The Network Setup will guide the four quick steps to networking. Please click "Next".

Step 1. Select Internet connection type
Step 2. Setup Internet connection
Step 3. Setup wireless setting and Finish

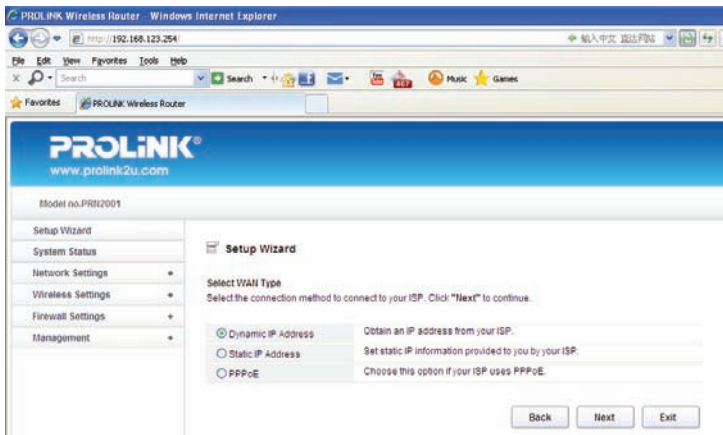
Next

4. Konfigurasi Router

Langkah 3

Pilih Connection (WAN) menurut Jenis Penyedia Layanan Internet Anda. (ISP)

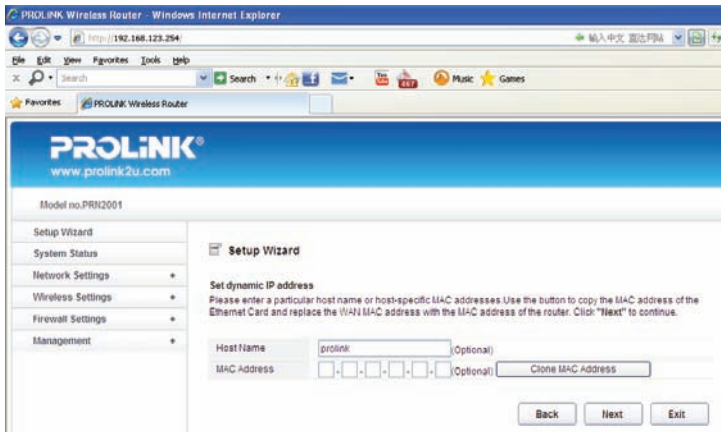
3.1 Untuk pengguna **Internet Cable**, pilih Dynamic IP Address dan klik tombol Next.



The screenshot shows a web browser window displaying the configuration interface for a PROLINK Wireless Router. The browser's address bar shows the URL `http://192.168.123.254`. The page title is "PROLINK Wireless Router - Windows Internet Explorer". The main content area features the PROLINK logo and the website `www.prolink2u.com`. Below the logo, the model number "Model no.PRN2001" is displayed. A navigation menu on the left lists various settings: Setup Wizard, System Status, Network Settings, Wireless Settings, Firewall Settings, and Management. The "Setup Wizard" section is active, showing a "Select WAN Type" screen. The instructions read: "Select the connection method to connect to your ISP. Click 'Next' to continue." Three radio button options are presented: "Dynamic IP Address" (selected), "Static IP Address", and "PPPoE". Each option has a brief description: "Obtain an IP address from your ISP.", "Set static IP information provided to you by your ISP.", and "Choose this option if your ISP uses PPPoE." At the bottom right of the wizard, there are three buttons: "Back", "Next", and "Exit".

4. Konfigurasi Router

Untuk beberapa pengguna cable modem, mungkin perlu melakukan Clone MAC Address, silahkan klik tombol Clone untuk melanjutkan ke langkah berikutnya. (Opsional)



Model no.PRN2001

- Setup Wizard
- System Status
- Network Settings *
- Wireless Settings *
- Firewall Settings *
- Management *

Setup Wizard

Set dynamic IP address

Please enter a particular host name or host-specific MAC addresses. Use the button to copy the MAC address of the Ethernet Card and replace the WAN MAC address with the MAC address of the router. Click "Next" to continue.

Host Name: (Optional)

MAC Address: (Optional)

4. Konfigurasi Router

3.2 Untuk pengguna **Static IP**, pilih Static IP Address dan masukkan alamat IP nya.

PROLINK Wireless Router - Windows Internet Explorer
http://192.168.123.254/

Model no.PRN2001

Setup Wizard

System Status

Network Settings +

Wireless Settings +

Firewall Settings +

Management +

Setup Wizard

Set static IP address
Set static IP information provided to you by your ISP. Click "Next" to continue.

WAN IP Address	192.168.1.20
WAN Subnet Mask	255.255.255.0
WAN Gateway	192.168.1.1
Primary DNS Address	166.21.83.88
Secondary DNS Address	<input type="text"/> (Optional)

Back Next Exit

4. Konfigurasi Router

3.3 Untuk pengguna **ADSL**, pilih PPPoE dan masukkan informasi account yang disediakan oleh ISP.

PROLINK Wireless Router - Windows Internet Explorer
http://192.168.123.254

Model no. PRH2001

Setup Wizard

System Status

Network Settings *

Wireless Settings *

Firewall Settings *

Management *

Setup Wizard

PPPoE Settings
The service name is optional, but if your ISP requires this information, please enter the appropriate value. Click "Next" to continue.

User Account:

User Password:

Confirm Password:

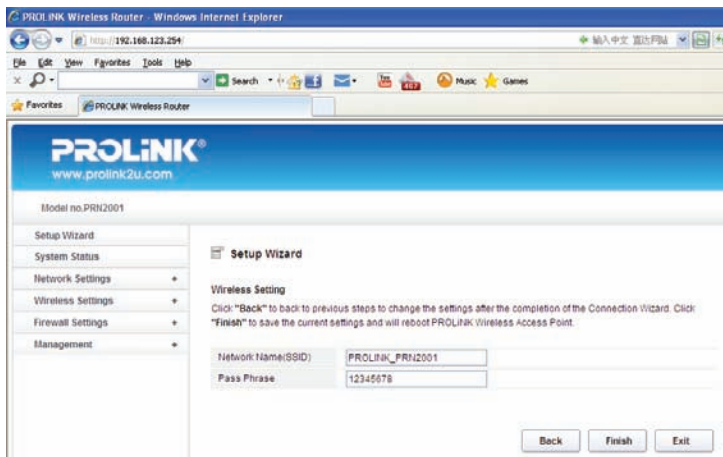
Service Name: (Optional)

Back Next Exit

4. Konfigurasi Router

Langkah 4

Untuk Wireless Setting, Anda dapat mengubah Nama Default jaringan (SSID) sesuai dengan yang Anda inginkan. Masukkan password wireless yang Anda inginkan misalnya 12345678 (harus minimal 8 karakter). Klik tombol Finish untuk menyimpan dan mereboot router.



PROLINK Wireless Router - Windows Internet Explorer

http://192.168.123.254

PROLINK®
www.prolink2u.com

Model no.PRN2001

- Setup Wizard
- System Status
- Network Settings +
- Wireless Settings +
- Firewall Settings +
- Management +

Setup Wizard

Wireless Setting

Click "Back" to back to previous steps to change the settings after the completion of the Connection Wizard. Click "Finish" to save the current settings and will reboot PROLINK Wireless Access Point.

Network Name (SSID): PROLINK_PRN2001

Pass Phrase: 12345678

Back Finish Exit

Worldwide Customer Care Centers

INDONESIA Office

PT PROLiNK INTIDATA NUSANTARA

Walk-In : Jl. Cideng Barat No. 79, Jakarta Pusat 10150, Indonesia.

Telephone : +62 21 3483 1777

Email Support : support@prolink.co.id

MALAYSIA Office

FIDA SYSTEMS (M) SDN BHD

Walk-In : 29 Jalan USJ 1/31, 47600 Subang Jaya, Selangor Darul Ehsan, Malaysia.

Telephone : +60 3 8024 9151

Email Support : support_my@fida.com

SINGAPORE Office

FIDA INTERNATIONAL (S) PTE LTD

Walk-In : Block 16 Kallang Place #06-02, Kallang Basin Industrial Estate, Singapore 339156.

Telephone : +65 6357 0668

Email Support : support@fida.com

Technical Support Hotline

INDONESIA : +62 21 3483 1717

MALAYSIA : +60 3 8023 9151

SINGAPORE : +65 6357 0666

Note: Closed on Saturdays, Sundays and local/regional Public Holidays.

Register Online For Your Product Warranty @ www.prolink2u.com/register

PROLiNK® is a trademark of Fida International (S) Pte Ltd and is manufactured under its authority. Microsoft®, Windows®, Windows® 98SE/ME/2000/XP/Vista/7/8 are either registered trademarks or trademarks of Microsoft Corporation. Mac and the Mac logo are trademarks of Apple, Inc., registered in the U.S. and other countries. Linux® is a registered trademark of Linus Torvalds and Linux penguin "Tux" created by Larry Ewing and The Gimp. All other brands, products, services, logos and company names mentioned herein are trademarks of their respective owners. All specifications, designs and contents are subjected to changes without prior notice. Images are for demonstration and may vary from actual products. © Copyright 2012. PROLiNK® All rights reserved.

KETENTUAN GARANSI (for Indonesia region only)

PROLINK®
Your Reliable IT Products

Kami mengucapkan terima kasih atas kepercayaan Anda memilih produk kami dan selaku distributor di Indonesia, kami memberikan garansi produk selama 1 (satu) tahun.

1. Garansi Hanya Berlaku Jika :

- Diisi dengan jelas, lengkap dan benar.
- Jika telah dikirimkan dan diterima oleh PT. Prolink Intidata Nusantara.
- Memperlihatkan kartu garansi asli dan nota pembelian pada saat klaim service.

2. Garansi Tidak Berlaku Apabila :

- Kerusakan yang disebabkan oleh, kelalaian pemakai, bencana alam, kebakaran, tegangan listrik yang terlalu tinggi / rendah, terkena cairan.
- Kerusakan yang diakibatkan karena transportasi / pengiriman, pemasangan / pengoperasian yang tidak sesuai dengan buku petunjuk, penyambungan dengan alat lain.
- Barang yang diservice tidak sesuai dengan kartu garansi.
- Serial number rusak / robek / tidak ada.

3. Ruang Lingkup Garansi :

- Garansi hanya mencakup bagian-bagian / komponen perangkat keras dari konfigurasi standar yang terdapat pada spesifikasi produk sesuai dengan faktur.
- Khusus netbook garansi baterai hanya berlaku selama 6 bulan sejak tgl. pembelian.

* Biaya pengiriman ditanggung pembeli



PROLINK®
Your Reliable IT Products

Tempelkan perangko
disini.
Hanya untuk pengeposan
di Indonesia

Kepada Yth.
Customer Service
PT. PROLINK INTIDATA NUSANTARA
Jl. Cideng Barat No.79
Jakarta Pusat 10150 - Indonesia



KARTU GARANSI
(for Indonesia region only)

No :**KARTU GARANSI / WARRANTY CARD***(for Indonesia region only)*

Barang : Data Comm Networking Netbook
Produk : UPS Display* Accessories

S/N :

Nama :
Name

Model :

Alamat :
Address

Tgl. Pembelian :
Purchase Date

Dealer :
Toko :

Kota : **Kode Pos** :

Kota :
City :

Tel / Fax :**Email :****Pelanggan****PT. Prolink Intidata Nusantara****Cap Toko**

*Kartu Garansi harus diisi lengkap, kirimkan paling lambat 14 Hari setelah Tgl. Pembelian / Please Fill - in Your Warranty Card Completely and Send max.14 day after Purchase
 * Terdaftar No.2134/1.824.124*

Alamat Pengiriman : **PT. PROLINK INTIDATA NUSANTARA**
Address : **Jl. Cideng Barat No.79 Jakarta Pusat 10150 -Indonesia**

Telp. : (62-21) 34831777
Fax : (62-21) 34830788
Email : service@prolink.co.id

No :**KARTU GARANSI / WARRANTY CARD***(for Indonesia region only)*

Barang : Data Comm Networking Netbook
Produk : UPS Display* Accessories

S/N :

Nama :
Name

Model :

Alamat :
Address

Tgl. Pembelian :
Purchase Date

Dealer :
Toko :

Kota : **Kode Pos** :

Kota :
City :

Tel / Fax :**Email :****Pelanggan****PT. Prolink Intidata Nusantara****Cap Toko**

*Kartu Garansi harus diisi lengkap, kirimkan paling lambat 14 Hari setelah Tgl. Pembelian / Please Fill - in Your Warranty Card Completely and Send max.14 day after Purchase
 * Terdaftar No.2134/1.824.124*

Alamat Pengiriman : **PT. PROLINK INTIDATA NUSANTARA**
Address : **Jl. Cideng Barat No.79 Jakarta Pusat 10150 -Indonesia**

Telp. : (62-21) 34831777
Fax : (62-21) 34830788
Email : service@prolink.co.id